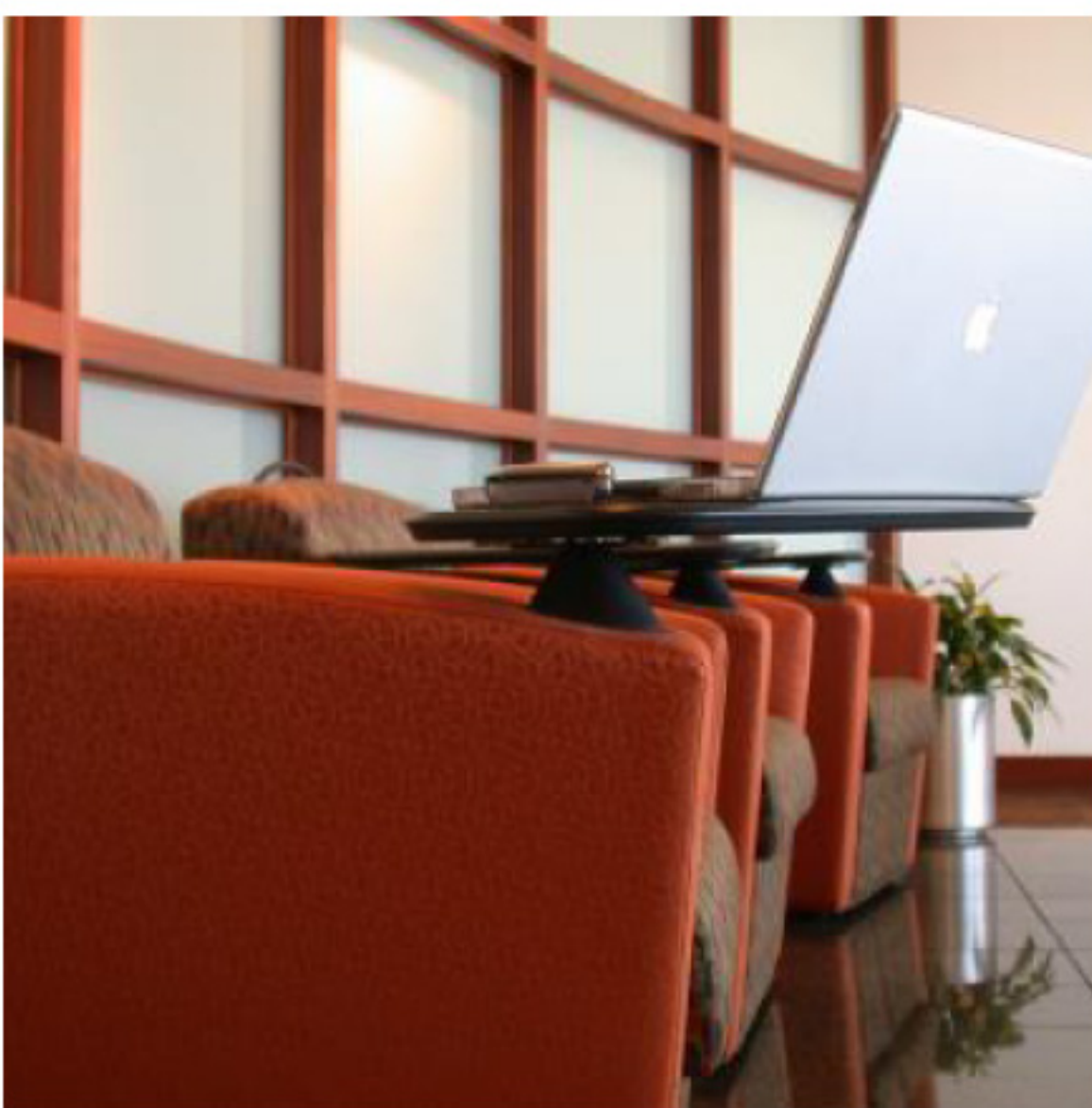
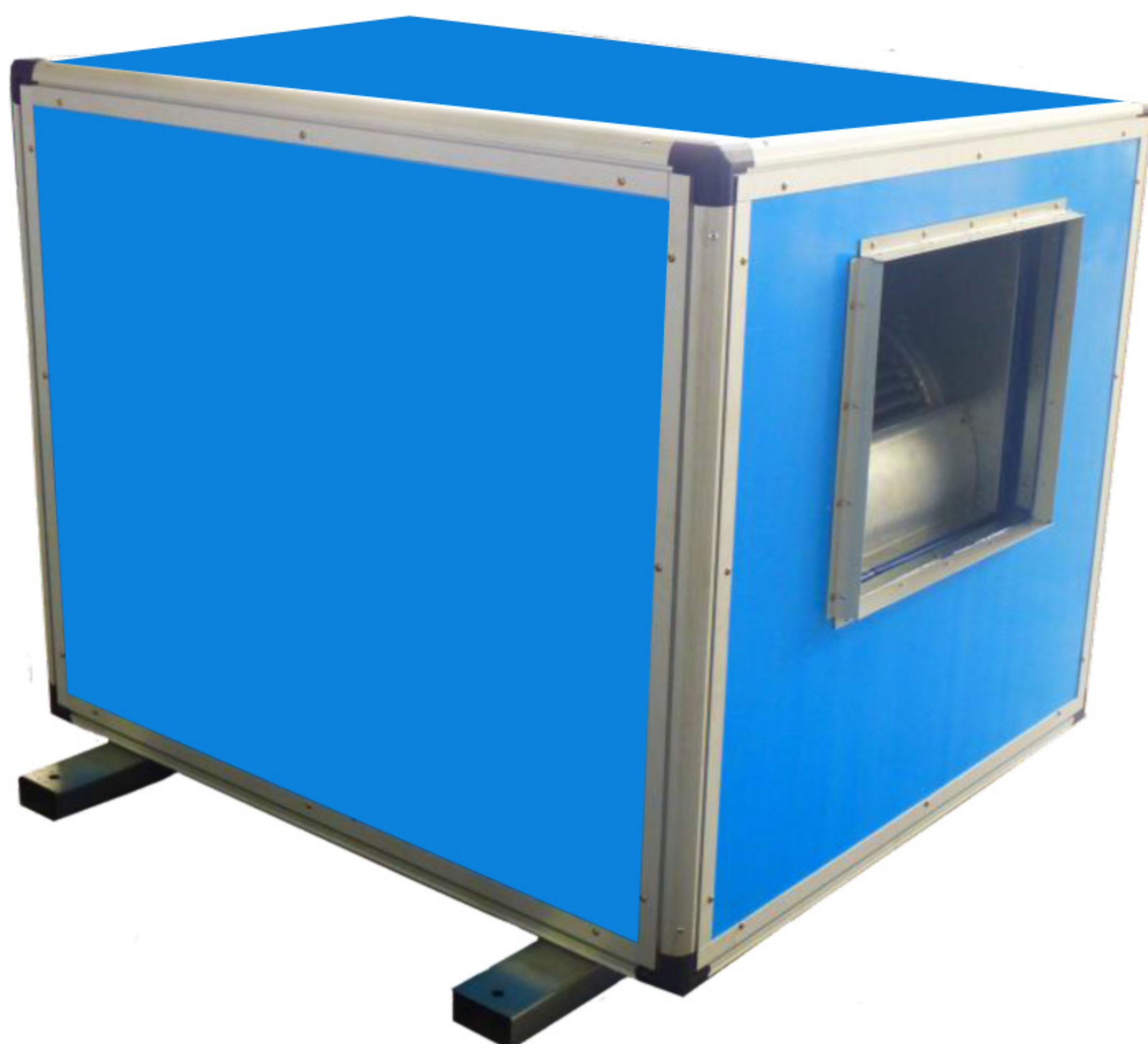


**CSBI  
CSBT**  
series



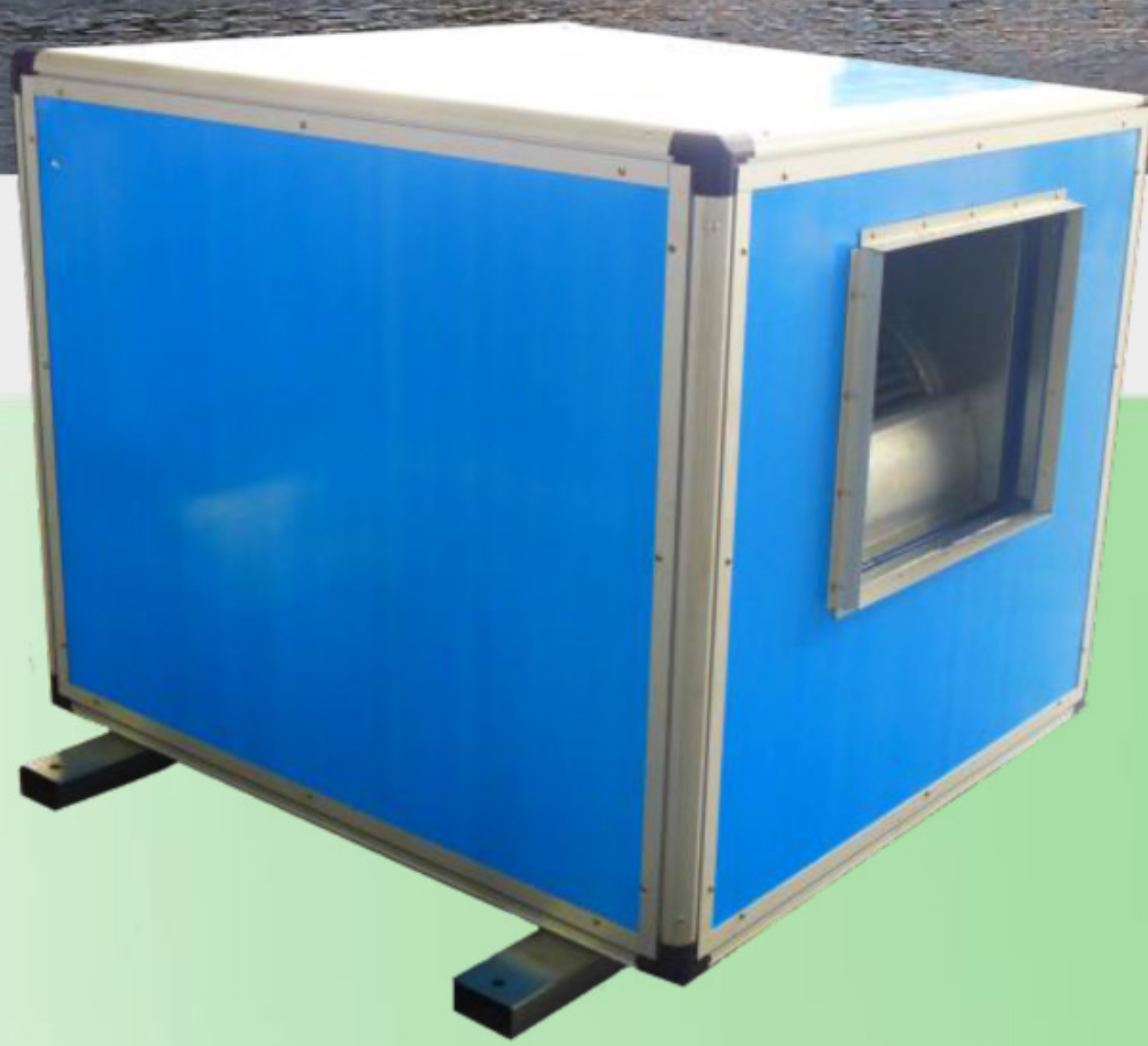
## Single Skin Belt Driven Cabinet Fan



GTG Industries Sdn Bhd certifies that the model: CSBI /CSBT shown herein is licensed to bear the AMCA Seal.

The ratings shown are based on tests and procedures performed in accordance with AMCA Publication 211 and AMCA Publication 311 and comply with the requirements of the AMCA Certified Ratings Program.





## Single Skin Belt Driven Cabinet Fan

- ◆ Belt-driven centrifugal blower allows wide selection to suit all ventilation requirements
- ◆ SINGLE SKIN CASING attribute to low operating sound
- ◆ IN LINE casing construction facilitate easy ductwork connection
- ◆ Aesthetic casing for exposed installation
- ◆ Easy installation and maintenance

### Introduction

**CSBI/CSBT** are specially designed with double inlet centrifugal fan enclosed in a rigid, aesthetic single skinned fan casing for both exposed and concealed installation. With its highly efficient belt driven centrifugal blower, it can satisfy all engineers' requirement in air volume, pressure and sound, thus it is suitable to be used in ventilation system for those areas where sound and clean air are of prime consideration.

#### The Fan

- Type : Forward curve double inlet , double width ( DIDW ) centrifugal fan
- Material : GI steel

#### The cabinet

- Unique extruded aluminium alloy framework
- Galvanized steel channel base

#### The Panel

- GI Sheet Panel

#### Optional items

- Internal insulation with variety choices :
  - 1) Rock-wool with perforated sheet .
  - 2) Rock-wool with perforated aluminum foil.
  - 3) Nitrile rubber foam.
- Filter.
- Damper.

#### Motor

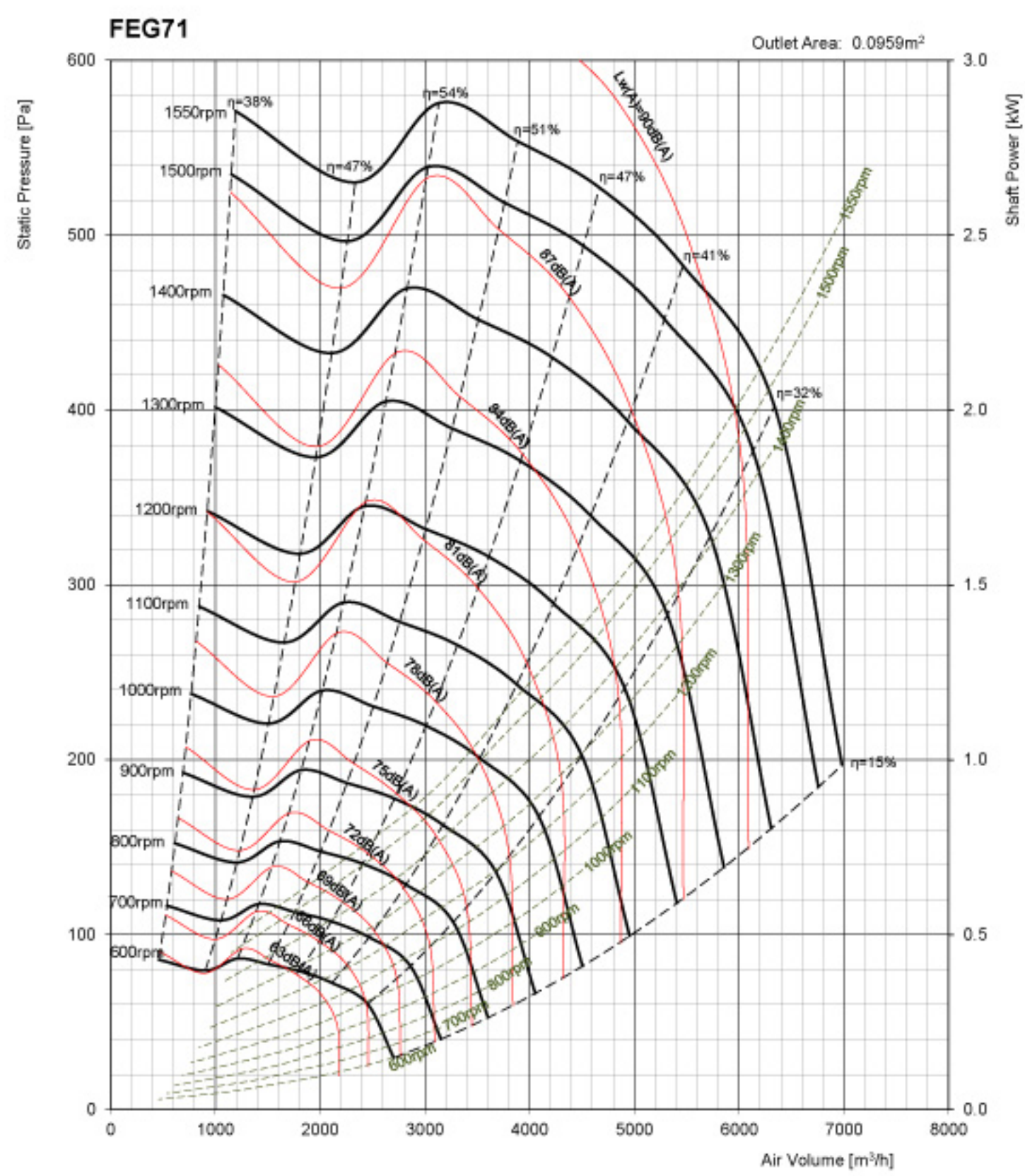
- 3 phase foot mounted , IP55 , TEAO squirrel cage induction motor.

#### Highlight.

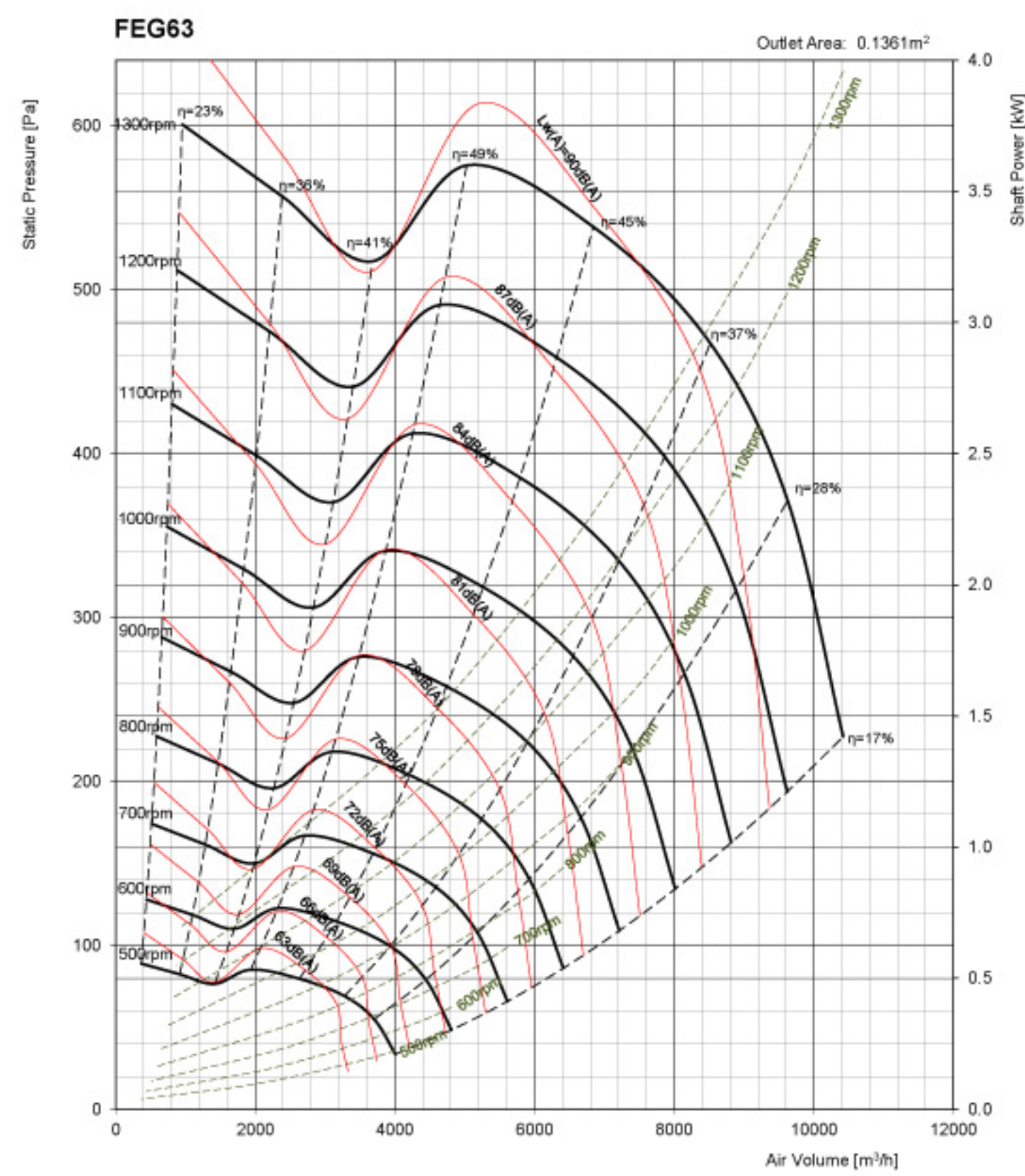
All performance curves are tested with fans inside cabinet structure.

# Performance Curve

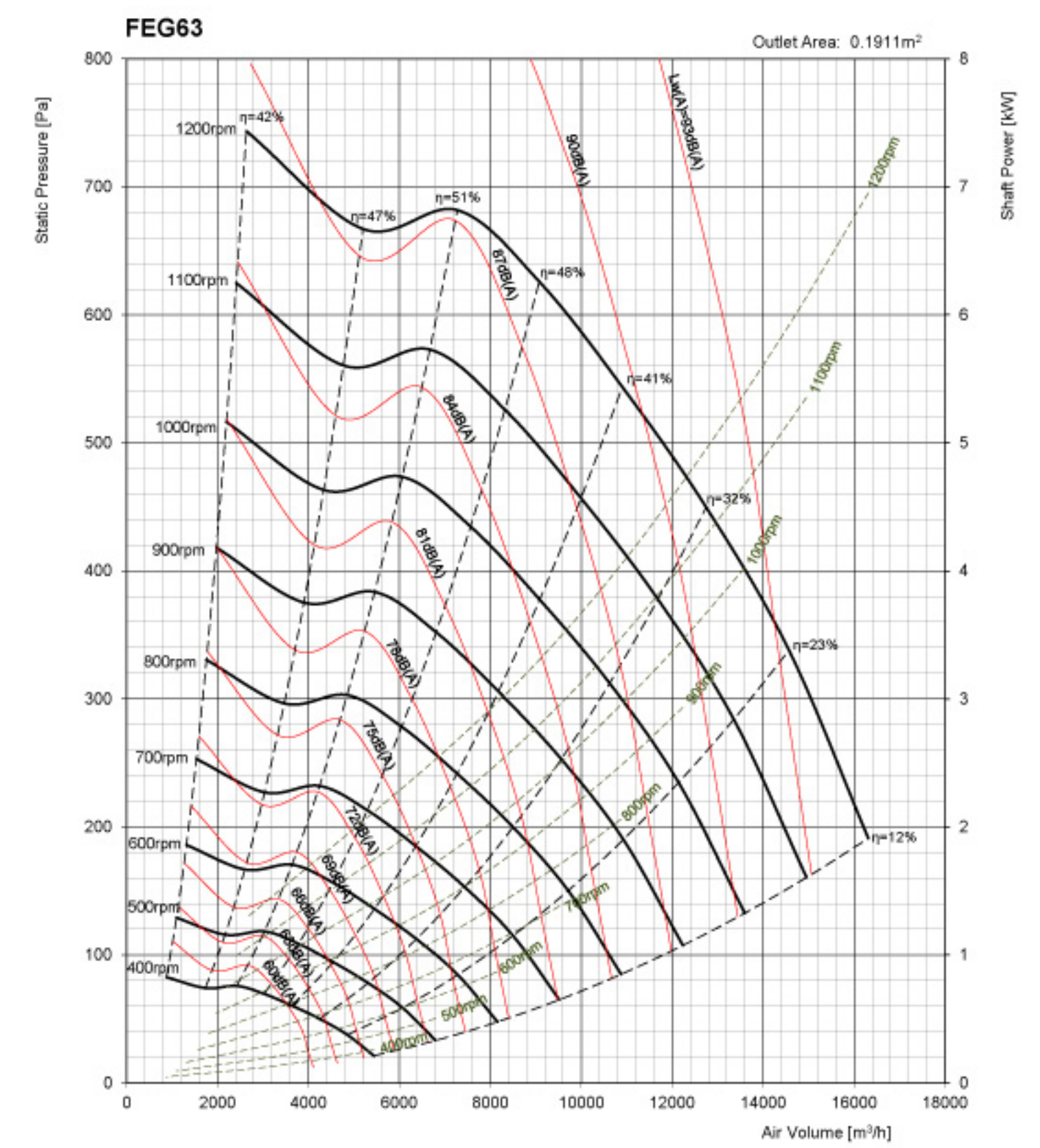
## CSBI 10/10



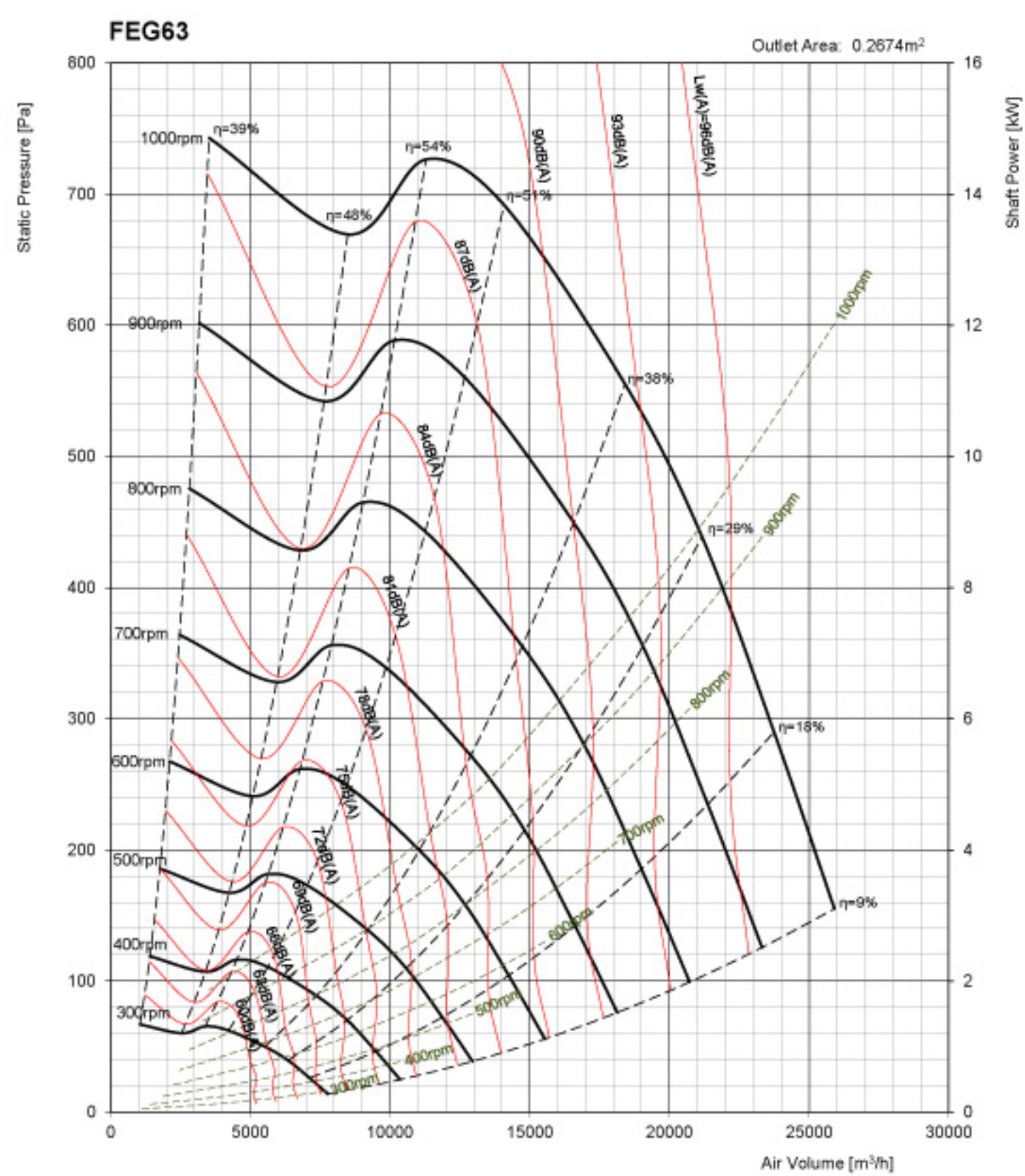
## CSBI 12/12



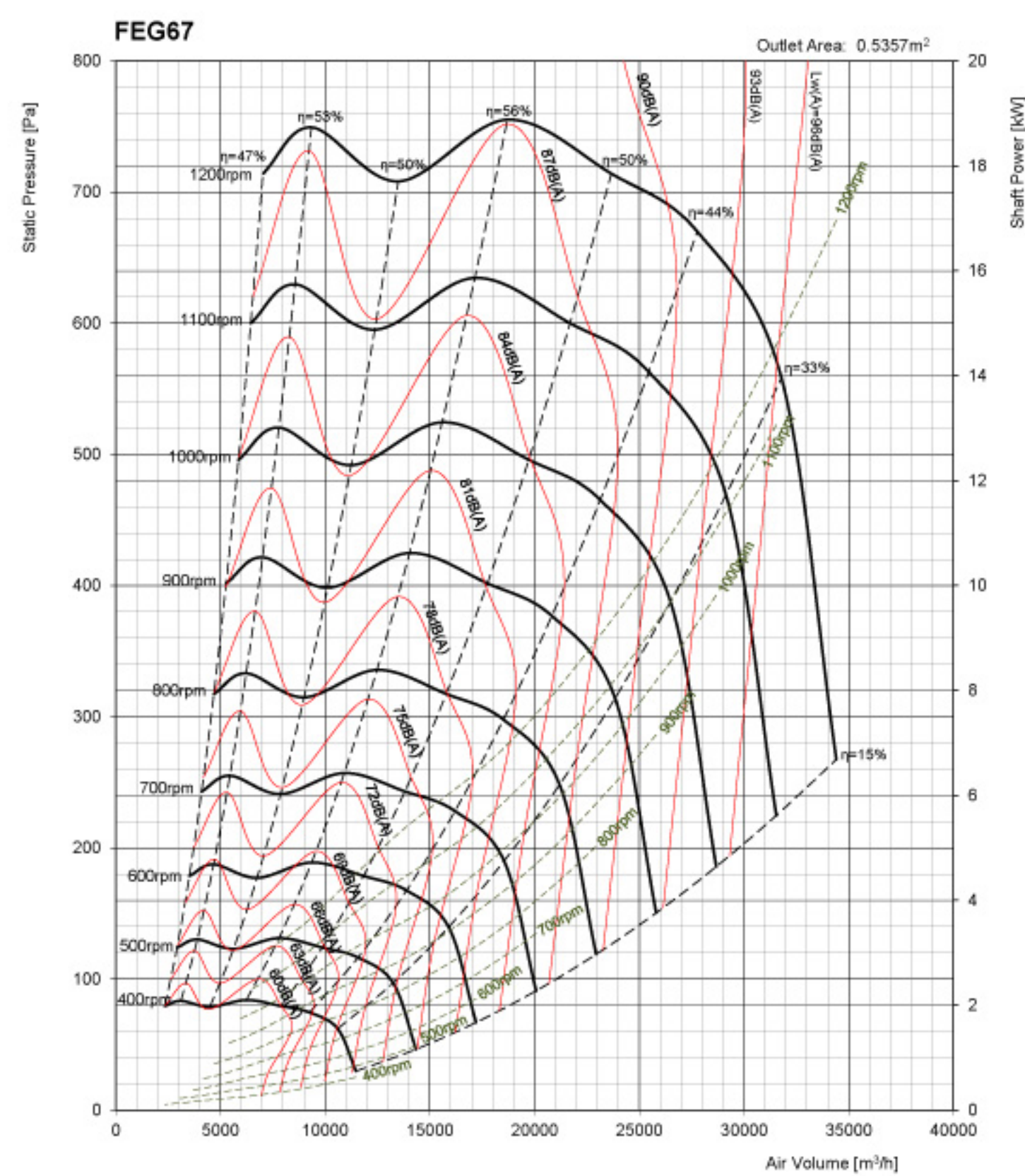
## CSBI 15/15



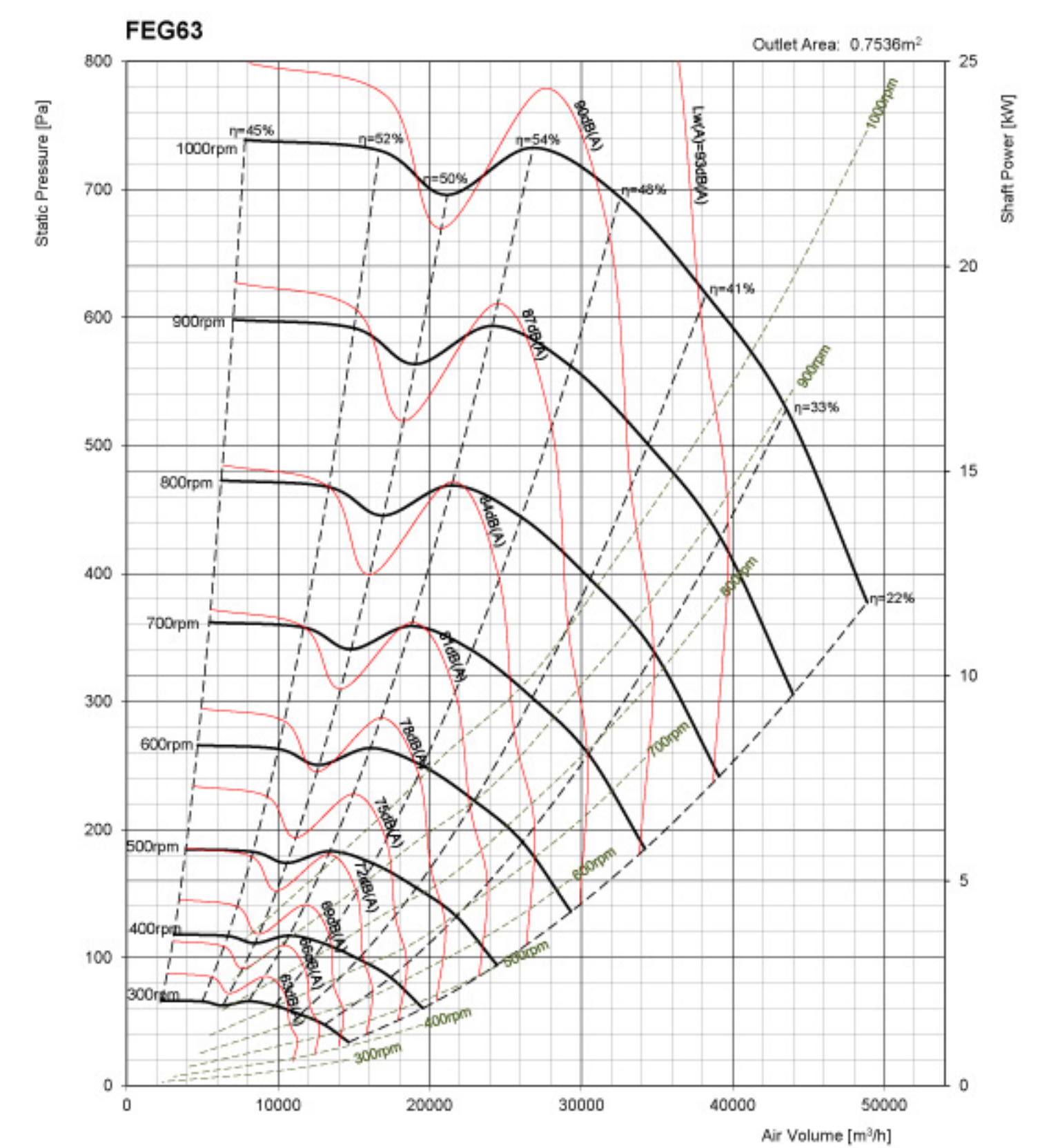
## CSBI 18/18



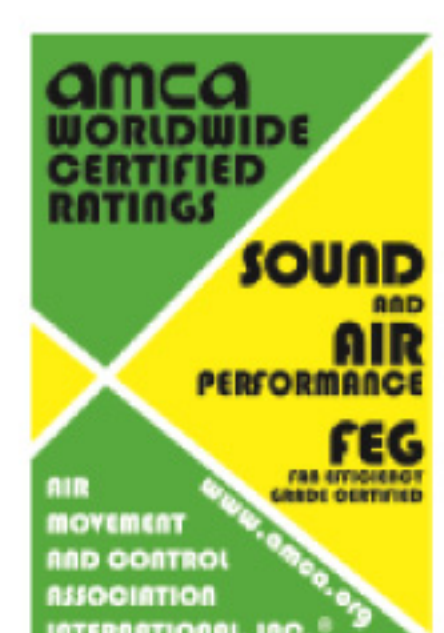
## CSBT 15/15



## CSBT 18/18

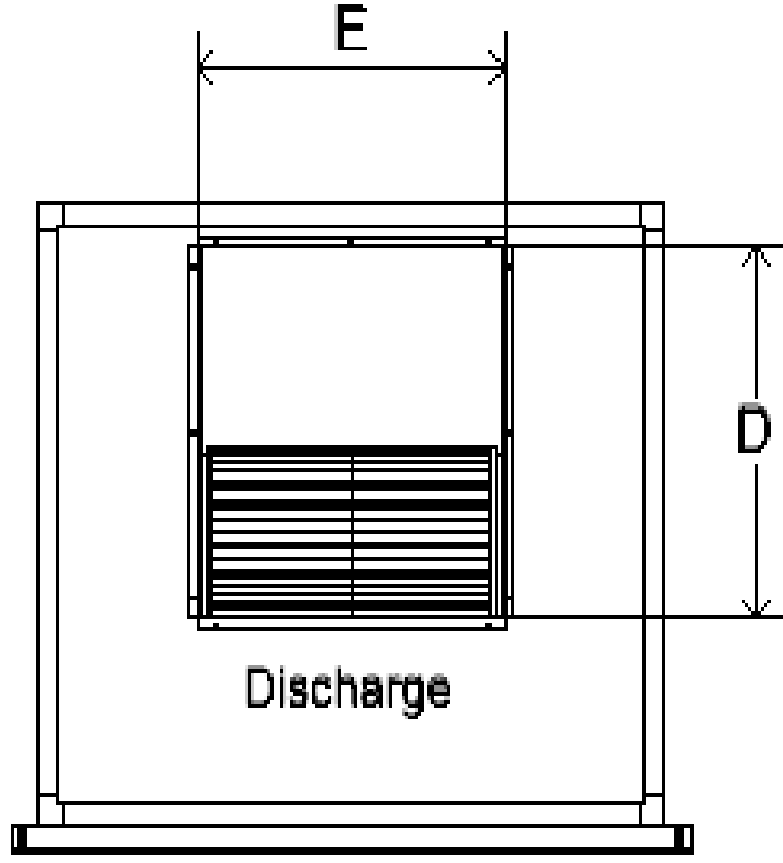


- Performance certified is for installation type D-Ducted inlet. Ducted outlet. Performance ratings do not include the effects of appurtenances (accessories).
- The A-weighted sound ratings shown have been calculated per AMCA International Standard 301. Values shown are for inlet LwA sound power levels for installation type D: ducted inlet, ducted outlet. Ratings include the effects of duct end correction.
- Power rating (kW) does not include transmission losses.

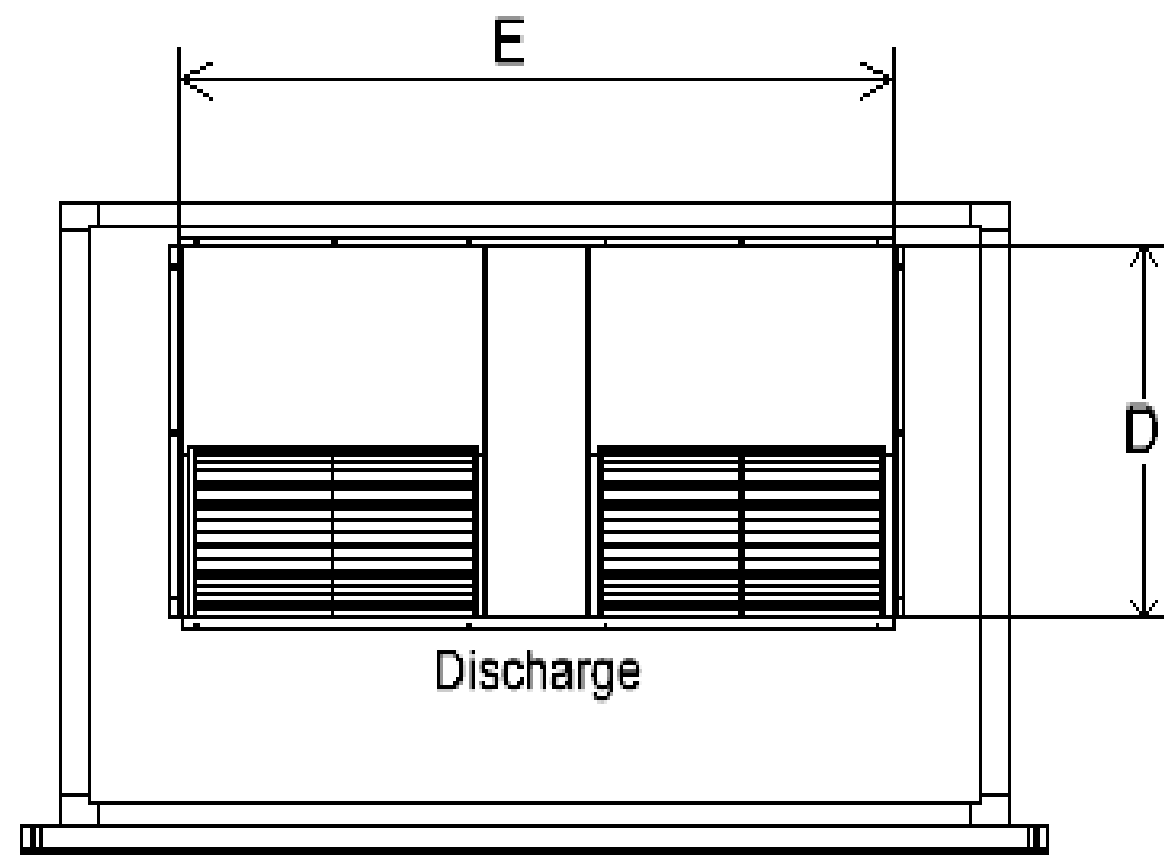


# Dimension (mm)

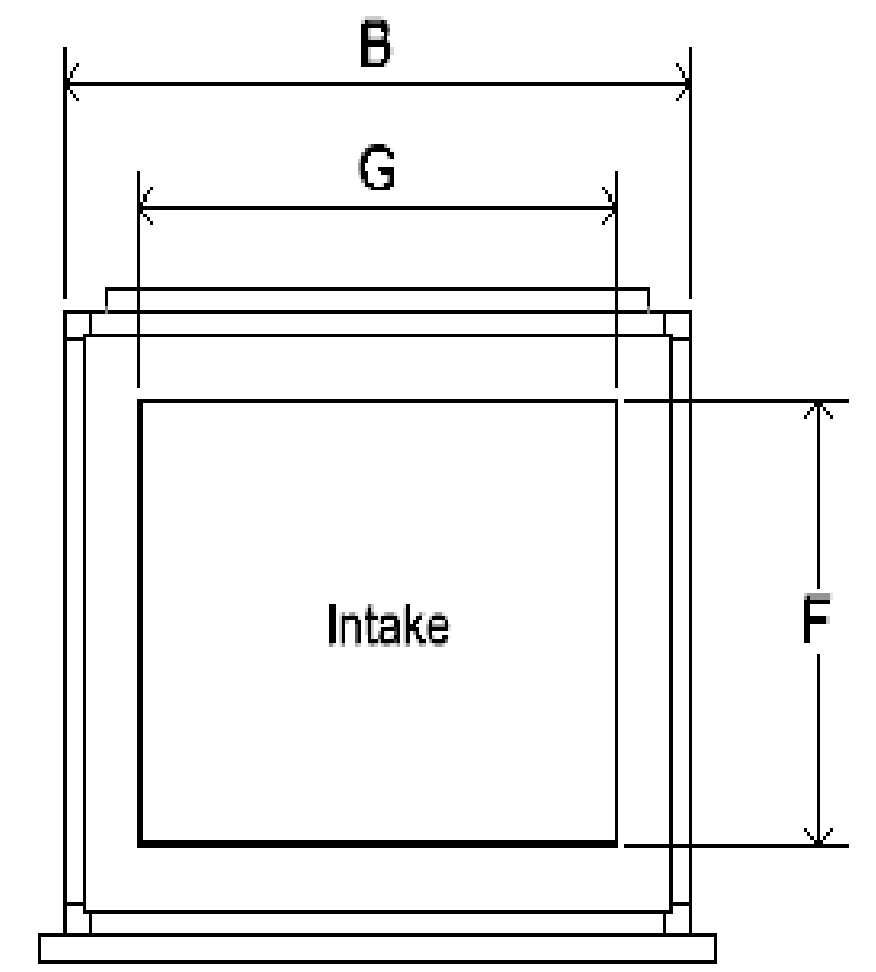
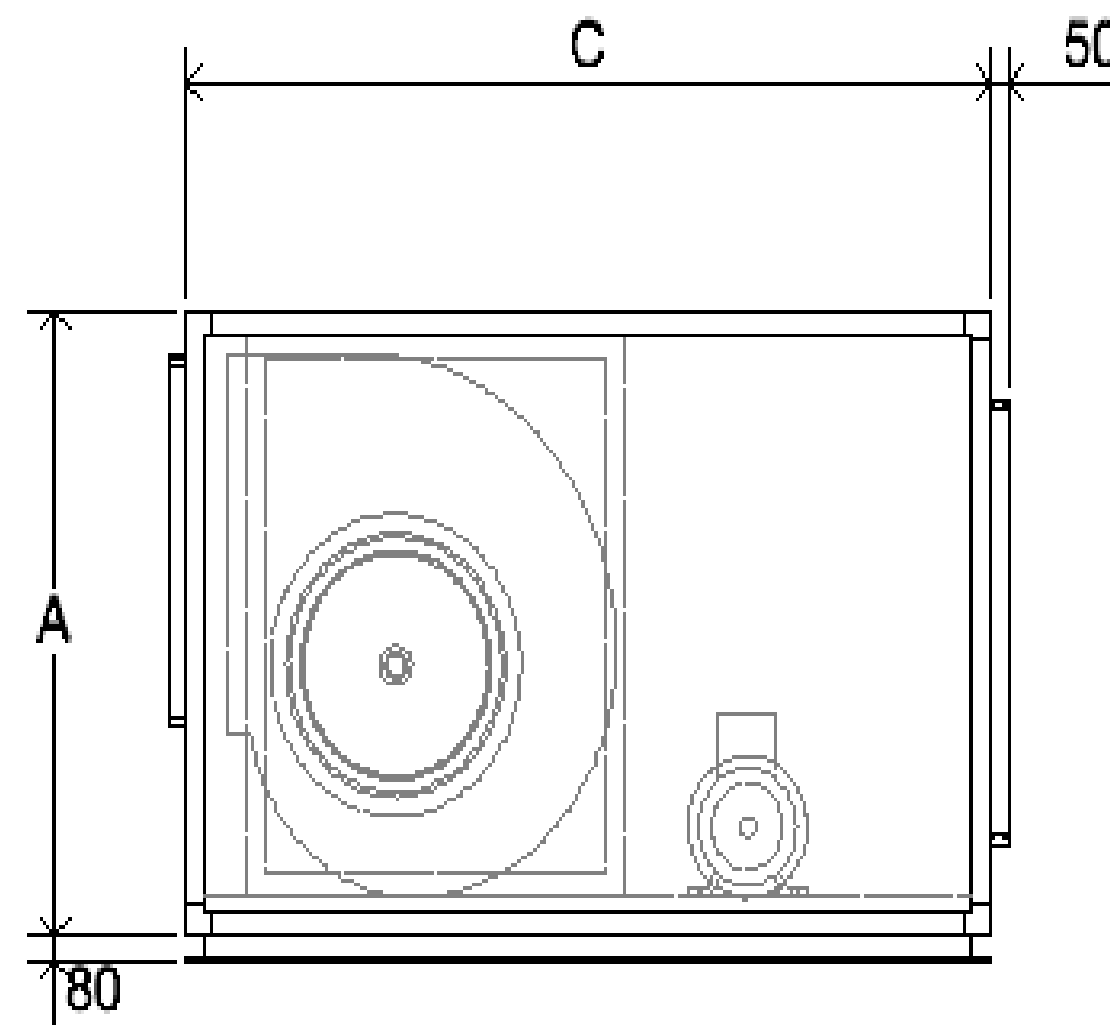
## Horizontal Discharge



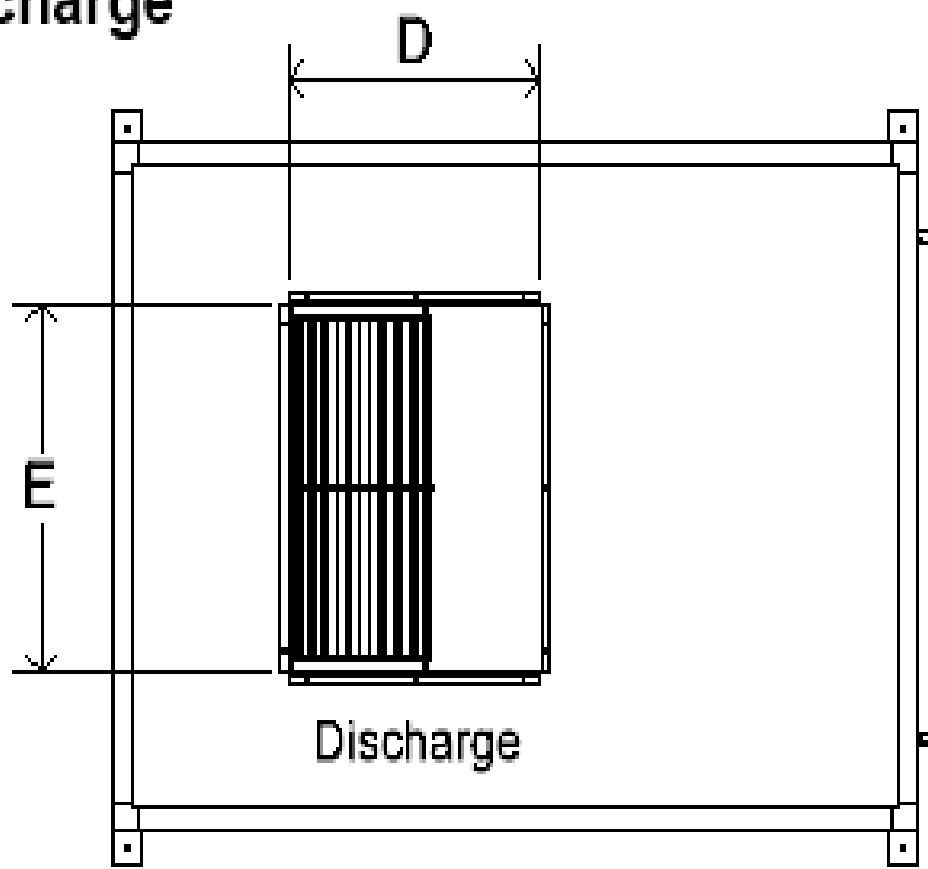
CSBI 10/10, CSBI 12/12  
CSBI 15/15, CSBI 18/18



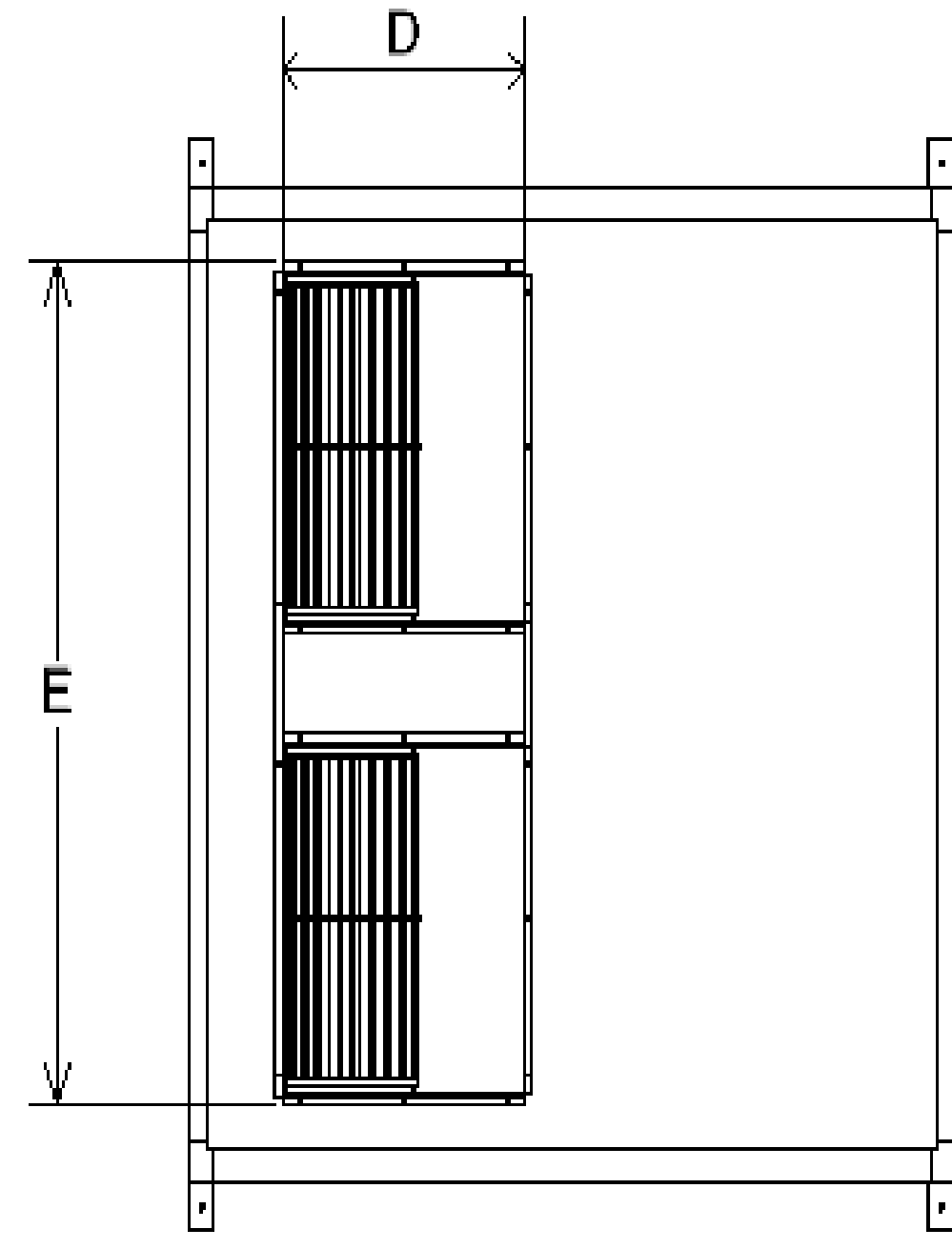
CSBT 15/15, CSBT 18/18



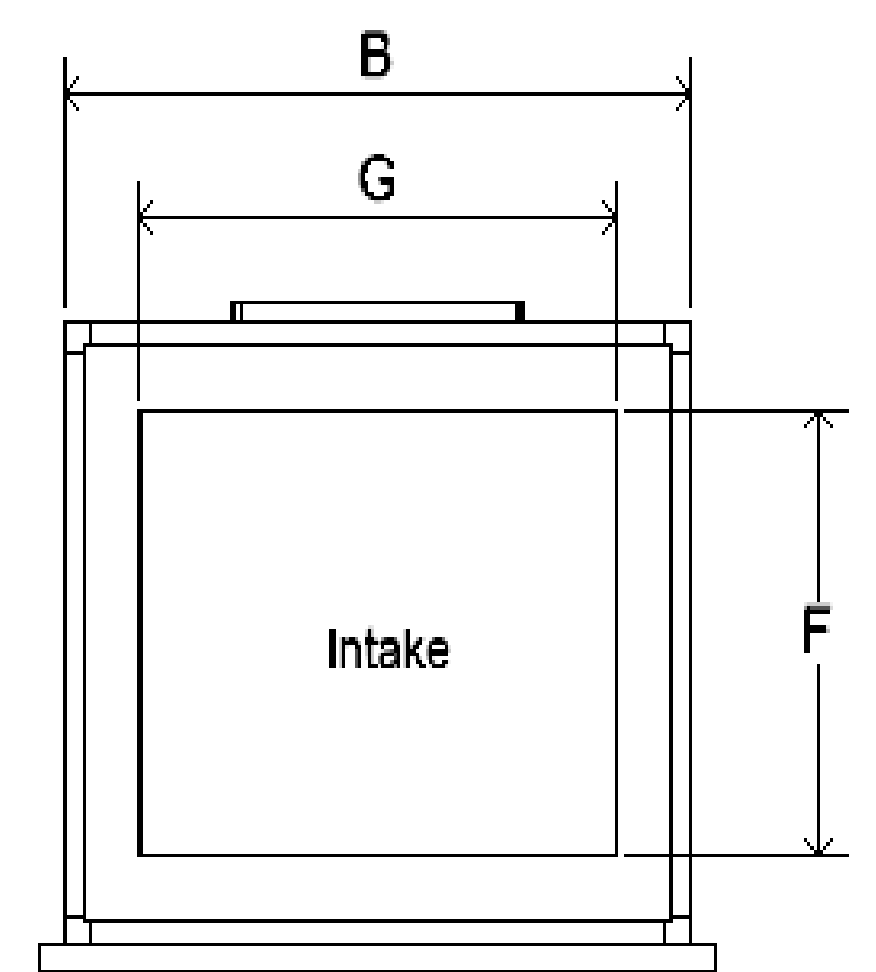
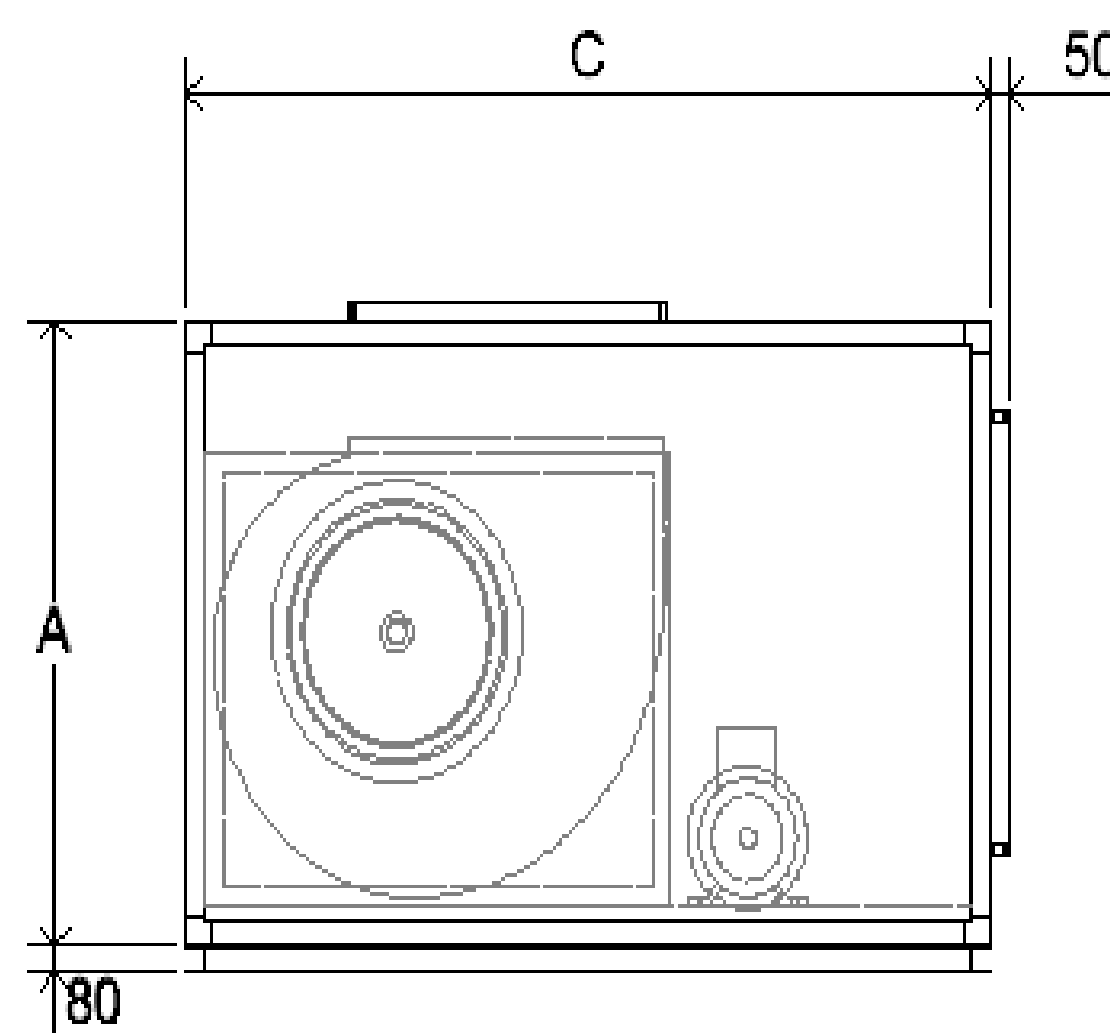
## Top Discharge



CSBI 10/10, CSBI 12/12  
CSBI 15/15, CSBI 18/18



CSBT 15/15, CSBT 18/18



\*Performance of top discharge are not licensed by AMCA international

Model	A	B	C	Discharge		Intake	
				D	E	F	G
CSBI 10/10	650	710	968	288	333	588	648
CSBI 12/12	726	800	1048	342	398	664	738
CSBI 15/15	865	914	1185	404	473	803	852
CSBI 18/18	985	1074	1310	480	557	923	1012
CSBT 15/15	885	1767	1221	404	1326	823	1705
CSBT 18/18	1005	2087	1385	480	1570	943	2025

- The actual dimension is subject to changes without prior notice, kindly refer to GTG Technical Submittal for further details
- Other arrangements / configuration are available. Please contact your local GTG Office

**GTG Industries Sdn Bhd** (912584-W)  
 No. 13, Jalan Astaka U8/88B, Seksyen U8, Bukit Jelutong,  
 40150 Shah Alam, Selangor, Malaysia.  
 TEL +603-7859 0213 FAX +603-7491 8138  
 EMAIL inquiry@gtg.com.my WEBSITE www.gtg.com.my



SCAN & VISIT OUR WEBSITE

