

GENERAL

Ventline High Efficiency Sand louvers is designed to provide weather resistance and excellent air volume qualities with high resistance in sand filtration. VTL-STLH8 is suitable for special application and supplied with concealed mullions for continuous blade or modular assemblies. Vertically installed into the wall opening of the building.

CONSTRUCTION

Manufactured from aluminium extrusion Alloy 6063 T6 mechanically jointed.

Frame 3.0mm (T) Al. Extrusion
 Blade 2.0mm (T) Al. Extrusion
 Blade Spacing. 50mm
 Depth 203mm (8")
 Free Area (%) 50%
 Min. Size 300x300 (mm)
 Max. Size 3048x2348(mm)
 Louver Clearance 1/4 inch
 Larger Sizes in multiple section or additional conceal support rail to be provided behind.
 Finish Mill Finish, Powder coated, Epoxy coated, PVDF and Natural Anodizing. Special coating is available upon request.

OPTIONAL FEATURE

Blank Panels. Double wall or Single skin
 Mullion more than 1.8m width
 Support screen with Birdmesh or Insect mesh from Aluminium, Galvanized or Stainless steel.
 Filter Rack Washable type
 Openable Louver Hinged/Pinned
 Welded Assembly Frames and blade with fillet welds concealed from view. Each weld has 25.4mm (1-inch) min. in length with 3.175mm (1/8 – inch) leg.
 Irregular shapes. Triangular, Trapezoidal & etc..
 Sleeved flange for Ductwok system.



SUGGESTED SPECIFICATION

Manufacture and install as specified hereinafter where shown on plans or as described in schedules. Louvers shall be stationary type entirely contained a 8" (203) frame. Louver components (heads, jambs, cills, blades and mullions) shall be factory assembled by Ventline. Louver sizes too large for shipping shall be made in modules for easy handling. Louver is designed to withstand a wind load of 30 lbs. per ft².

Louvers shall be Ventline Model VTL-STLH8 constructions as follows:

- Frame: 3.0mm (T) Extruded Aluminium – Alloy 6063T5/T6
- Blades: 2.0mm (T) Extruded Aluminium – Alloy 6063T5/T6 three bends
- Screen: 1.0mm (T) Aluminium flattened expanded mesh.
- Finish: To be selected from Standard RAL colour charts (Other colour is available upon request)

DATE		DESIGNER		ENGINEER	
PROJECT					
ITEM	QTY	W	H	 <p>Ventline Air Conditioning Requisites Manufacturing LLC certifies that the model VTL-STLH8 shown herein are licensed to bear the AMCA Seal. The ratings shown are based on tests and procedures performed in accordance with AMCA Publication 511 and comply with requirements of the AMCA Certified Ratings Program. The AMCA Certified Ratings Seals applies to air performance and wind driven sand ratings.</p>	
 <p>Ventilation and Acoustic Solutions</p>				P.O. Box : 77261 , Dubai, UAE Tel.: +971 4 341 9538, Fax: +971 4 3419548 Email: info@ventline.ae Website: www.ventlineinternational.com Head Office 6444 Santa Fe Drive, TX, USA, 75056, 3276 Tel.: +1 469 767 6579 Fax: +1 972 668 2553	

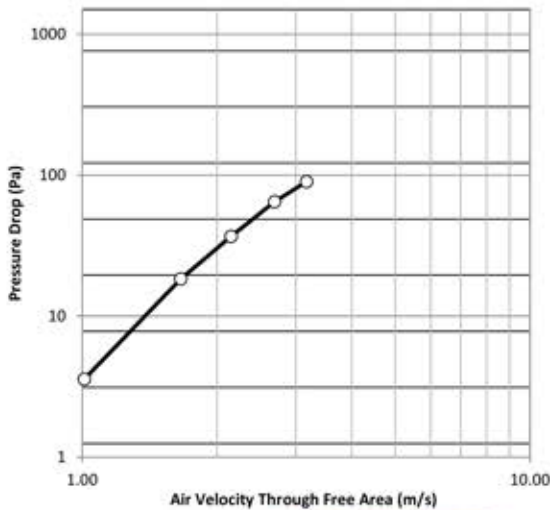
All performance is designed and tested in accordance with AMCA standard 511-10

FREE AREA CALCULATIONS in SQ. Mtr.

M ²	Height (mm)															
	304.8	457	610	762	914	1067	1219	1372	1524	1676	1829	1981	2134	2286	2438	
Width (mm)	305	0.023	0.052	0.081	0.110	0.139	0.168	0.197	0.226	0.255	0.283	0.313	0.341	0.370	0.399	0.428
	457	0.034	0.077	0.119	0.162	0.204	0.247	0.290	0.332	0.375	0.417	0.460	0.503	0.545	0.588	0.630
	610	0.045	0.101	0.158	0.214	0.270	0.326	0.383	0.439	0.495	0.551	0.608	0.664	0.720	0.777	0.833
	762	0.056	0.126	0.196	0.266	0.335	0.406	0.475	0.546	0.615	0.685	0.755	0.825	0.895	0.965	1.035
	914	0.067	0.150	0.234	0.318	0.401	0.485	0.568	0.652	0.736	0.819	0.903	0.986	1.070	1.154	1.237
	1067	0.078	0.175	0.272	0.370	0.467	0.564	0.661	0.759	0.856	0.953	1.051	1.148	1.245	1.342	1.439
	1219	0.089	0.199	0.311	0.421	0.532	0.643	0.754	0.866	0.976	1.087	1.198	1.309	1.420	1.531	1.642
	1372	0.099	0.224	0.349	0.473	0.598	0.723	0.847	0.972	1.097	1.221	1.346	1.470	1.595	1.720	1.844
	1524	0.110	0.248	0.387	0.525	0.663	0.802	0.940	1.079	1.217	1.355	1.494	1.632	1.770	1.908	2.046
	1676	0.121	0.273	0.426	0.577	0.729	0.881	1.033	1.185	1.337	1.489	1.641	1.793	1.945	2.097	2.248
	1829	0.132	0.298	0.464	0.629	0.794	0.961	1.126	1.292	1.457	1.623	1.789	1.954	2.120	2.286	2.451
	1981	0.143	0.322	0.502	0.681	0.860	1.040	1.219	1.399	1.578	1.756	1.936	2.115	2.295	2.474	2.653
	2134	0.154	0.347	0.540	0.733	0.925	1.119	1.312	1.505	1.698	1.890	2.084	2.277	2.470	2.663	2.855
	2286	0.165	0.371	0.579	0.785	0.991	1.198	1.405	1.612	1.818	2.024	2.232	2.438	2.645	2.851	3.058
	2438	0.176	0.396	0.617	0.837	1.057	1.278	1.497	1.719	1.938	2.158	2.379	2.599	2.820	3.040	3.260
	2591	0.187	0.420	0.655	0.889	1.122	1.357	1.590	1.825	2.059	2.292	2.527	2.760	2.995	3.229	3.462
	2743	0.198	0.445	0.694	0.941	1.188	1.436	1.683	1.932	2.179	2.426	2.675	2.922	3.170	3.417	3.664
2896	0.209	0.470	0.732	0.993	1.253	1.516	1.776	2.039	2.299	2.560	2.822	3.083	3.345	3.606	3.867	
3048	0.219	0.494	0.770	1.044	1.319	1.595	1.869	2.145	2.419	2.694	2.970	3.244	3.520	3.795	4.069	

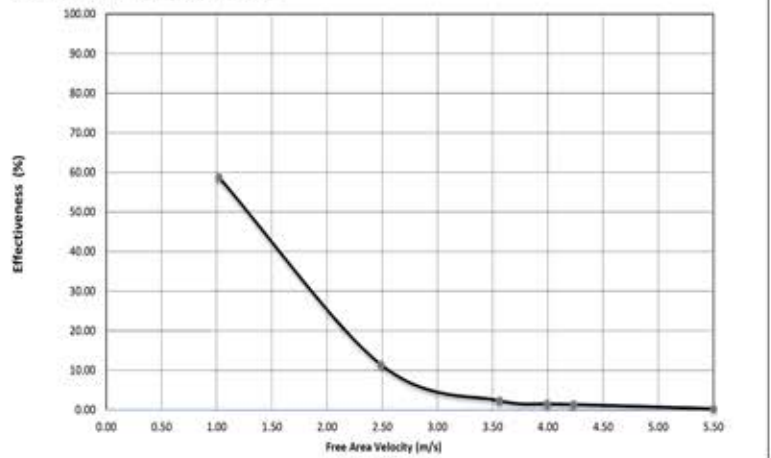
Air Performance

Test size 1200 mm. x 1200 mm.
Tested in accordance with ANSI/AMCA 500-L
Test Figure 5.5 - 6.5



Sand Removal Efficiency

Test size 1200 mm. x 1200 mm.
Tested in accordance with ANSI/AMCA 500-L



Free Area Velocity	M/s	1	2.5	3.5	4	4.23
Mass of Sand	Kg	1	1	2	2	2
Discharge Duration	s	200	75	100	70	60
Rate of Injected Sand	kg/s	0.005	0.013	0.020	0.029	0.033
Effectiveness	%	58.76	11.41	2.39	1.50	1.30

Table 3
Penetration Class for Wind Driven Sand Test

Class	Effectiveness
A	100% to 90%
B	89.9% to 80%
C	79.9% to 70%
D	Below 70%

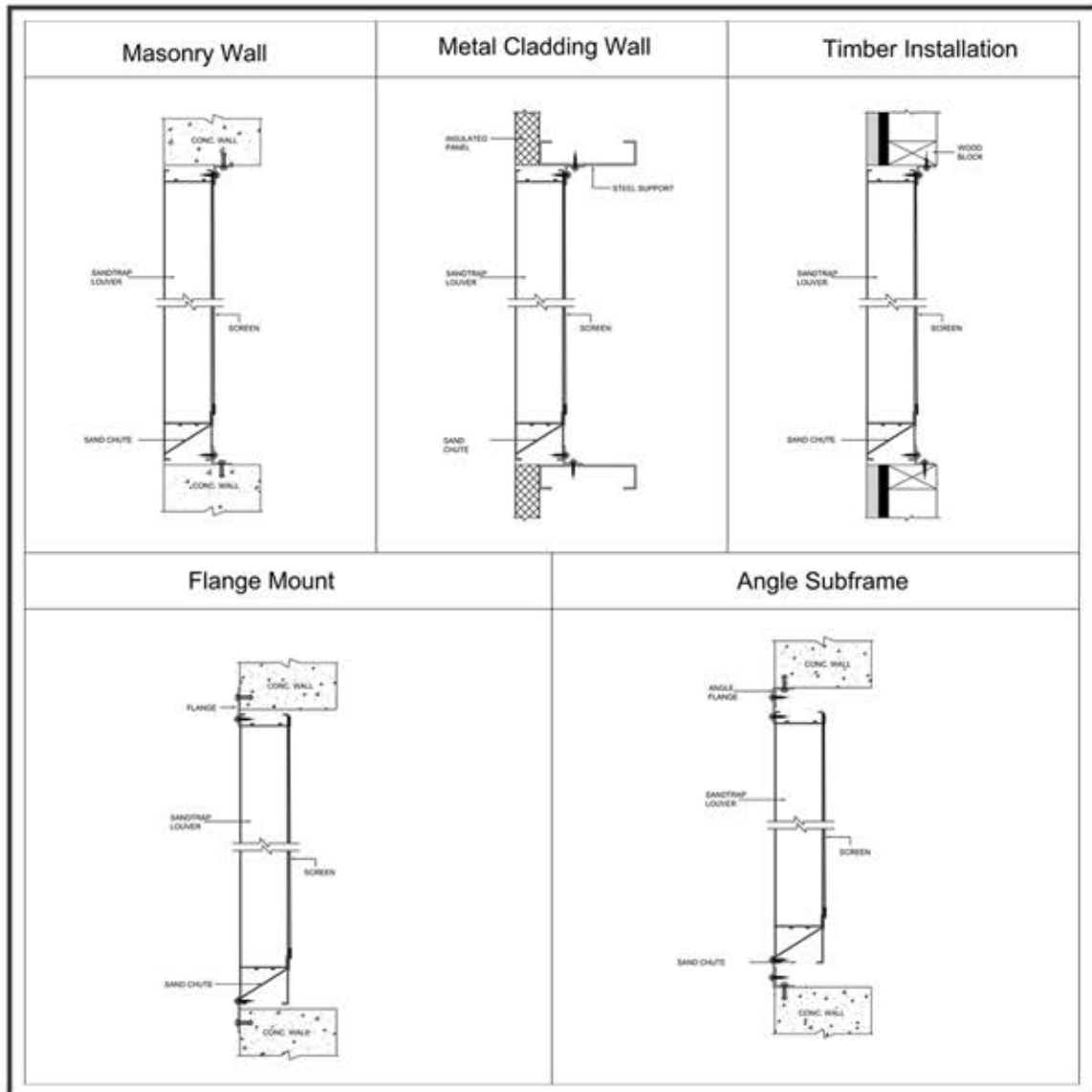
Note: These classifications apply at various free area velocities



Certified Ratings:

VentLine Airconditioning Requisites Manufacturing LLC certifies that the Model: VTL-STLH8 shown herein is licensed to bear the AMCA Seal. The ratings shown are based on tests and procedures performed in accordance with AMCA Publication 511 and comply with the requirements of the AMCA Certified Ratings Program."

TYPICAL INSTALLATION DETAILS



FINISHES

POWDER COATING: Louver shall be cleaned, pre-treated and FINISHED-AFTER-ASSEMBLY with an inhibitive primer and oven-cured polyester powder coatings complies with BS6496:1984 and Qualicoat requirement. Normally 70 to 90 microns

PVDF COATING: Louver shall be cleaned, pre-treated and FINISHED-AFTER-ASSEMBLY with an inhibitive primer and Kynar resin coating with minimum 1.2 mils dry-film coating thickness that complies with AAMA2605-05. "Voluntary Specification, Performance Requirements and Tests Procedures for Superior Performance Organic Coatings on Aluminium Extrusions and Panels" and Qualicoat requirements.

ANODIZE: Louver shall be FINISHED-AFTER-ASSEMBLY with class 1 clear anodized or electrolytically color anodized coating that complies with AAMA Specification 611-98, "Voluntary Specification for Anodized Architectural Aluminium". Color shall be from Gold, Silver and Black Matt or Polished.

EPOXY PAINT: Louver shall be cleaned, pre-treated and FINISH-AFTER-ASSEMBLY with an oven cured thermo-setting enamel finish in compliance with AAMA 2603, "Voluntary Specification Performance Requirements and Test Procedures for Pigmented Organic Coatings"