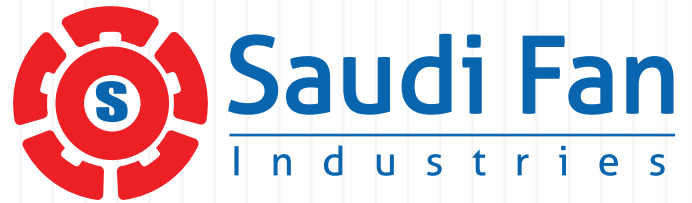


CATALOGUE # SF08- | JULY 2016
www.refhouse.com



Low Pressure fan
with Square Wall Ring...



2nd Industrial City,
Tel: +966 13 812 1866,
Fax: +966 13 812 1894,
Email: sales-sfi@refhouse.com

AXIAL FANS

DIRECT DRIVE- TYPE EQ/DQ



Vision

To be the first choice for industrial & commercial fans in the kingdom of Saudi Arabia & Middle East region

Mission

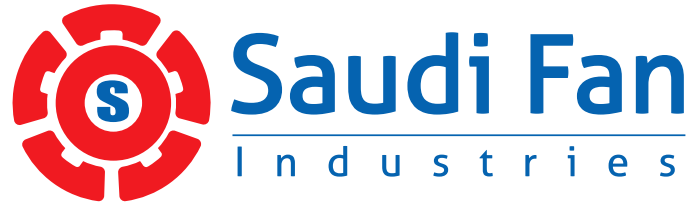
To deliver customized industrial & commercial fans that conforms to international standards and to develop the required processes and human resources in line with demands of globalization, economic, reform and good governance practices

Corporate Objective

To achieve sustainable growth and a high degree of customer retention with a keen focus on quality & efficiency

CONTENTS

■ Vision , Mission, Corporate Objective	2
■ Contents	3
■ Management Commitment to Quality	4
■ About Us	5
■ Technical Information	6
■ Fan Introducton – Axial Fans / EQ / DQ Series	7-8
■ Technical Data	9-31
■ Accessories	32-34
■ Installation	35-36
■ Guide for Specification	37
■ Warranty	38
■ Contacts / Inquiries	39



Management Commitment to Quality

We are continuously striving to provide higher quality products and services to achieve total customer satisfaction by understanding their requirements and anticipating their future expectations or needs

We are committed to development and strengthening of Partnership with our external and internal customers and suppliers

We are dedicated to continual improvement of all products and services through involvement of all employees .

We value all people by understanding and drawing upon their strengths ie. abilities and knowledge and make efforts for their training and development .

President

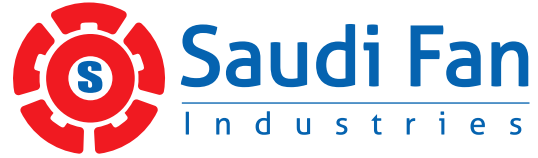
Ali Saleh Al Khalaf

About Us

Saudi Fan Industries was established In 1999 as another manufacturing division of steadily growing organization “Refrigeration House group“ in order to fulfill requirements of local market for air movement and control equipment’s.

As a member of Refrigeration House Group , that has market research for ventilation equipment’s spread over 25 years ,Saudi Fan industries now has grown into a full swing manufacturing unit to satisfy the demanding needs of air movement and control equipment’s for modern residential , commercial and industrial zones .

Saudi Fan Industries has acquired modern manufacturing technology and modern testing facilities like AMCA Accredited Test Laboratory for Standard 210 in order to achieve “Total Customer Satisfaction”. Not only still it has been investing significant resources in latest technology but also has created a medium where everyone in the organization can contribute. We have a stringent policy of research, development and making awareness of technology throughout the organization. Saudi Fan Industries has been implemented Quality Assurance Management System as per



EN ISO 9001:2008 Standard. As a result, Saudi Fan Industries products are manufactured precisely and consistently through all production stages under strict quality control procedures.

Saudi Fan Industries strictly acting on the policy of “The high quality product should be delivered to our valued customer’s right from the beginning”.

Now Saudi Fan Industries is not only the leading supplier of air movement and control equipment in Kingdom but also a famous name in entire gulf. It offers wide range of fans and ventilator products for residential, commercial, institutional and industrial buildings in applications from comfort ventilation to manufacturing processes.

Products are available for exhaust, supply, re-circulate, and filtered process and gravity applications. Fans are available in either direct drive or belt drive.

Saudi Fan Industries has significant production capacity in order to fulfill markets demand. It also has a pool of qualified staff, who are fully dedicated to give best advice to our valued customer’s inquiries.



ACCREDITED LABORATORY

TECHNICAL INFORMATION

TECHNICAL INFORMATION

Fan Laws

Speed Variation at constant fan size and constant density:

The volume flow changes proportionately to the speed.

$$\frac{V_1}{V_2} = \frac{n_1}{n_2}$$

All pressures (static, dynamic and total) change proportionately to the square of speed.

$$\frac{P_{st1}}{P_{st2}} = \left(\frac{n_1}{n_2}\right)^2 = \left(\frac{V_1}{V_2}\right)^2$$

The Power requirement changes proportionately to the third power of speed

$$\frac{P_1}{P_2} = \left(\frac{n_1}{n_2}\right)^3 = \left(\frac{V_1}{V_2}\right)^3$$

In the case of changes in the wheel diameter of geometrically similar wheels at constant speed:

The volume flow changes proportionately to the third power of the wheel diameter.

$$\frac{V_1}{V_2} = \left(\frac{D_1}{D_2}\right)^3$$

All pressures (static, dynamic and total) change proportionately to the square of wheel diameter.

$$\frac{P_{st1}}{P_{st2}} = \left(\frac{D_1}{D_2}\right)^2$$

The Power requirement changes proportionately to the fifth power of wheel diameter.

$$\frac{P_1}{P_2} = \left(\frac{D_1}{D_2}\right)^5$$

Pressure units

Convert from	Convert to										
	<i>Pa (N/m²)</i>	<i>bar</i>	<i>atm</i>	<i>mm Hg = 1 torr</i>	<i>mm H₂O</i>	<i>m H₂O</i>	<i>kg/cm²</i>	<i>lb/ft²</i>	<i>lb/in² (psi)</i>	<i>inches Hg</i>	<i>inches H₂O</i>
<i>Pa (N/m²)</i>	1	10 ⁻⁵	9.87 10 ⁻⁶	0.0075	0.1	10 ⁻⁴	1.02 10 ⁻⁵	0.021	1.45 10 ⁻⁴	2.96 10 ⁻⁴	4.02 10 ⁻³
<i>bar</i>	105	1	0.987	750	1.01910 ⁴	10.197	1.0197	2090	14.5	29.61	402
<i>atmosphere</i>	1.01 10 ⁵	1.013	1	759.9	10332	10.332	1.03	2117.5	14.69	29.92	407
<i>mm Hg</i>	133.3	1.33 10 ⁻³	1.32 10 ⁻³	1	13.3	0.013	1.36 10 ⁻³	2.79	0.019	0.039	0.54
<i>mm H₂O</i>	10	0.000097	9.87 10 ⁻⁵	0.075	1	0.001	1.02 10 ⁻⁴	0.209	1.45 10 ⁻³	2.96 10 ⁻³	0.04
<i>m H₂O</i>	104	0.097	9.87 10 ⁻²	75	1000	1	0.102	209	1.45	2.96	40.2
<i>kg/cm²</i>	9.8 10 ⁴	0.98	0.97	735	10000	10	1	2049	14.21	29.03	394
<i>lb/ft²</i>	47.8	4.78 10 ⁻⁴	4.72 10 ⁻⁴	0.36	4.78	4.78 10 ⁻³	4.88 10 ⁻⁴	1	0.0069	0.014	0.19
<i>lb/in² (psi)</i>	6894.76	0.069	0.068	51.7	689.7	0.69	0.07	144	1	2.04	27.7
<i>inches Hg</i>	3377	0.0338	0.033	25.4	337.7	0.337	0.034	70.8	0.49	1	13.57
<i>inches H₂O</i>	248.8	2.49 10 ⁻³	2.46 10 ⁻³	1.87	25.4	0.0254	0.0025	5.2	0.036	0.074	1

Volume Flow Units

Convert from	Convert to										
	<i>m³/s</i>	<i>m³/min</i>	<i>m³/h</i>	<i>liter/sec</i>	<i>liter/min</i>	<i>liter/h</i>	<i>cfm</i>	<i>US gpd</i>	<i>US gpm</i>	<i>IMP gpd</i>	<i>IMP gpm</i>
<i>m³/s</i>	1	60	3600	1000	60000	3600000	2119	22800000	15852	19000000	13200
<i>m³/min</i>	0.0167	1	60	16.67	1000	60000	35.32	380000	264.2	316667	220
<i>m³/h</i>	0.000278	0.0167	1	0.278	16.67	1000	0.589	6333.3	4.403	5277.8	3.67
<i>liter/sec</i>	0.001	0.06	3.6	1	60	3600	2.119	22800	15.852	19000	13.2
<i>liter/min</i>	1.67 10 ⁻⁵	0.001	0.06	0.0167	1	60	0.0353	380	0.2642	316.7	0.22
<i>liter/h</i>	2.7 10 ⁻⁷	0.000017	0.001	0.00028	0.0167	1	0.00059	6.33	0.0044	5.28	0.0037
<i>cfm</i>	0.00047	0.028	1.699	0.472	28.32	1698.99	1	10760.3	7.48	8966.9	6.23
<i>US gpd</i>	4.39 10 ⁻⁸	2.6 10 ⁻⁶	0.000158	0.000044	0.0026	0.158	0.000093	1	0.000695	0.833	0.000579
<i>US gpm</i>	0.000063	0.00379	0.227	0.063	3.785	227.1	0.1337	1438.3	1	1198.6	0.833
<i>IMP gpd UK</i>	5.26 10 ⁻⁸	3.2 10 ⁻⁶	0.000189	5.26 10 ⁻⁵	0.00316	0.1895	0.00011	1.2	0.00083	1	0.00069
<i>IMP gpm UK</i>	0.000076	0.0046	0.272	0.076	4.55	272.7	0.161	1727.3	1.2	1439.4	1

FAN INTRODUCTION

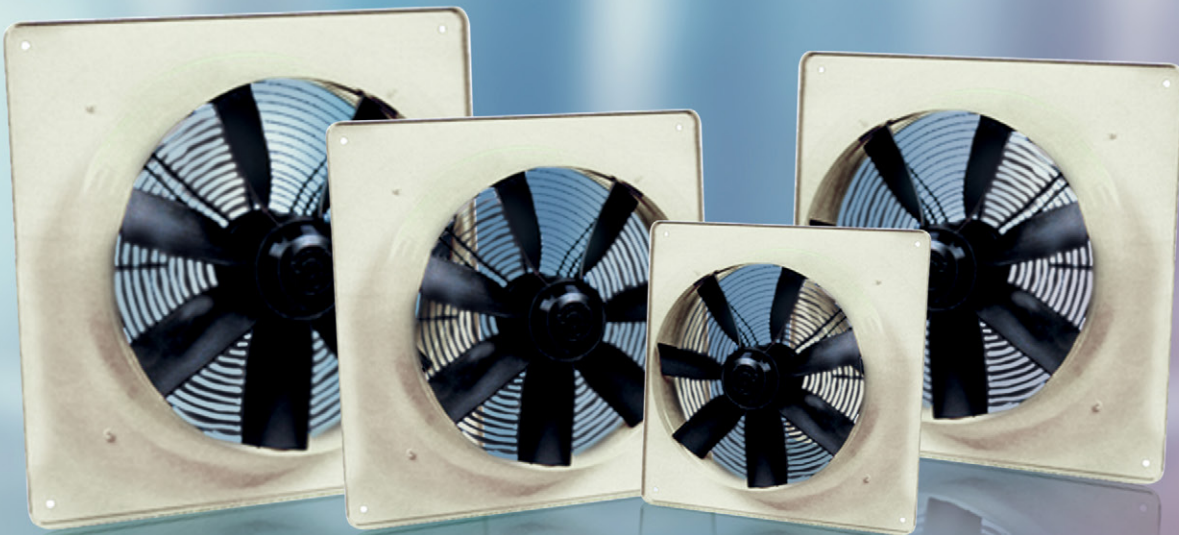
AXIAL FANS / EQ / DQ SERIES

Advantages:

- Flat and low profile.
- The ideal fan for many applications.
- 100% speed controllable through electronic control or VFD
- Easy installation in any position.
- Built in motor protection through thermal over load as standard.

Applications:



- The high efficiency axial fans are used wherever large air volumes must be ventilated against low to medium pressure.
- High efficiency axial fans with square inlet cone are used for ventilating restaurants, gymnasiums, conference rooms, workshops, warehouses, swimming pools and greenhouses.
- Slightly dusty and greasy air, slightly aggressive gases and fumes (please refer to our engineers).
- Mediums up to atmospheric density of 1.2kg/m³.
- Mediums passing through with a temperature of ~30°C up to 60°C and mediums up to a max. Humidity of 95%.



FAN INTRODUCTION

AXIAL FANS / EQ / DQ SERIES

Reference Code:

		E	Q	500	4		
E	Single phase A.C						
D	Three phase A.C					4	Number of poles
Q	Square wall ring					500	Impeller diameter

Ranges:

Models : EQ Series - 13 Models

Flow Rate : EQ Series - Up to 7950 CFM
Up to 13500 m³/h

Models : DQ Series - 10 Models

Flow Rate : DQ Series - Up to 15500 CFM
Up to 26350 m³/h

Construction Features:

Casing

The casing of high efficiency axial fans are made from Cold rolled steel sheet and are Powder coated RAL 9010 as standard. EQ/DQ Series are Plate mounted .

Impeller

The axial fans have aerodynamically profiled blades (sizes 200 to 300 made from galvanized and lacquered sheet steel; from size 315 to 560 made from plastic and sizes 630 up to 1000 made from aluminum). The impeller is mounted directly to the rotor of the external rotor motor and the motor and the impeller is balanced at two levels according to quality level G2.5 to DINI/SO 1940.

Motor

External rotor motor, protection class IP44/54 with protection against humidity and thermal contacts wired in windings for motor protection from size 315. Maintenance free ball bearings closed on both sides, sealed for life.

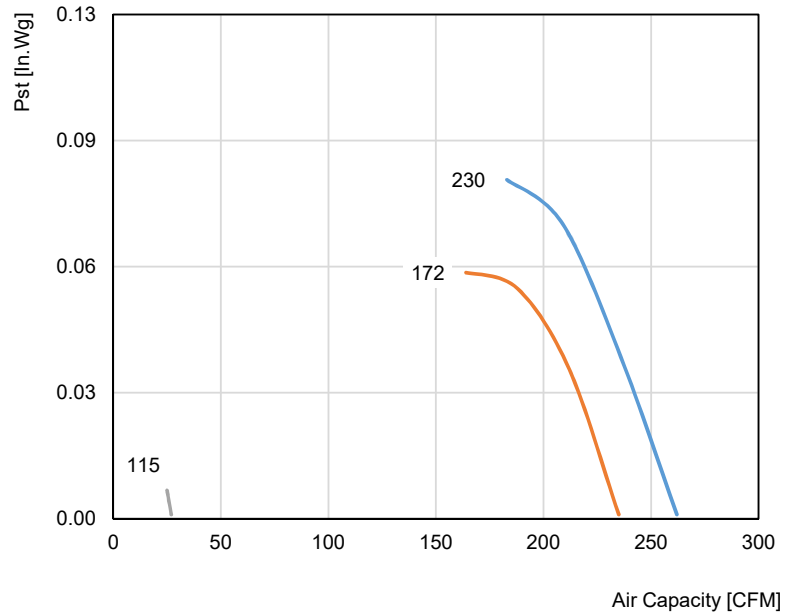
Electrical Connection

The motors are fitted with flying lead. The electrical connection can be made via an IP55 terminal box .

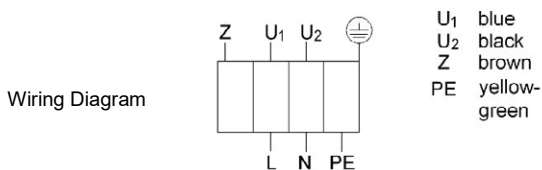


Technical Data

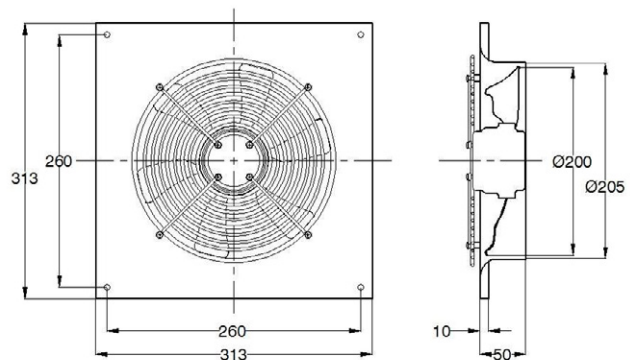
Nominal voltage [VAC]	1~ 230
Frequency [Hz]	60
Maximum Power [W]	38
Rated Power [W]	34
Rated FL Current [A]	0.24
Capacitor [μF]	-
Transported air temperature [°C]	70
Protection rating	IP 44
Wiring Diagram Nr.	1.009
Weight (kg)	3.5
Wall opening size (mm)	215 x 215



Direct Drive	Operating Volt	Fan RPM		Static Pressure in Inches Wg				
				0.00	0.01	0.02	0.03	0.063
EQ 200-4 100 % speed controllable motor	230	1578	CFM	262	256	249	243	218
			SONES	4.4	4.4	4.4	4.4	4.4
	172	1368	CFM	235	229	223	216	
			SONES	3.8	4.5	4.5	4.5	
	115	381	CFM	27				
			SONES	0.1				



Saudi Fan Industries certifies that the EQ Series Axial Fan shown herein is licensed to bear the AMCA Seal. The ratings shown are based on tests and procedures performed in accordance with AMCA Publication 211, AMCA Publication 311 and comply with the requirements of the AMCA Certified Ratings Program.



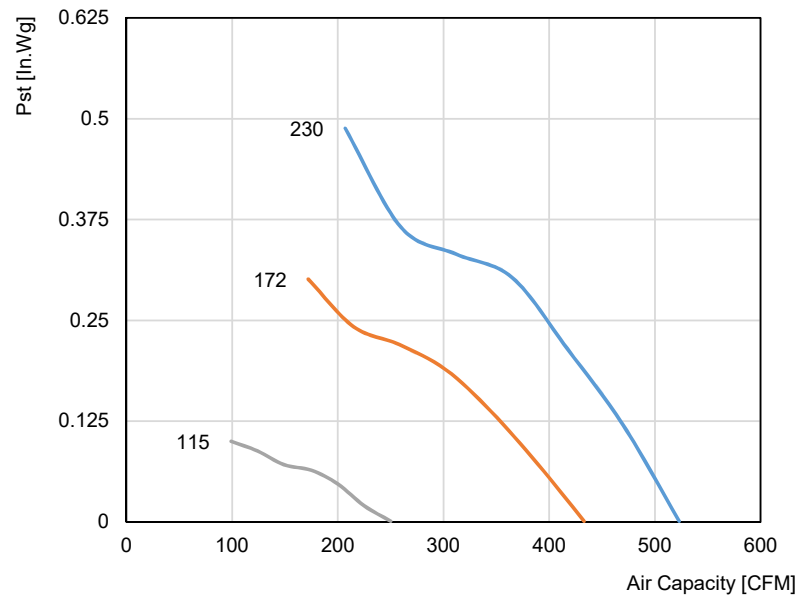
All Dimensions are in mm

Performance certified is for installation type A: Free inlet, free outlet per AMCA Standard 210. Performance ratings include the effects of fan guard and inlet cone. The Sound ratings shown are loudness values in fan sones at 1.5 m (5 ft) in a hemispherical free field calculated per AMCA International Standard 301 . Values shown are for: Installation Type A: free inlet hemispherical sone levels.



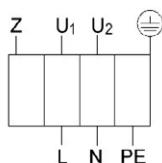
Technical Data

Nominal voltage [VAC]	1~ 230
Frequency [Hz]	60
Maximum Power [W]	93
Rated Power [W]	85
Rated FL Current [A]	0.37
Capacitor (µF)	1.5
Transported air temperature [°C]	60
Protection rating	IP 44
Wiring Diagram Nr.	1.009
Weight (kg)	3.5
Wall opening size (mm)	215x215

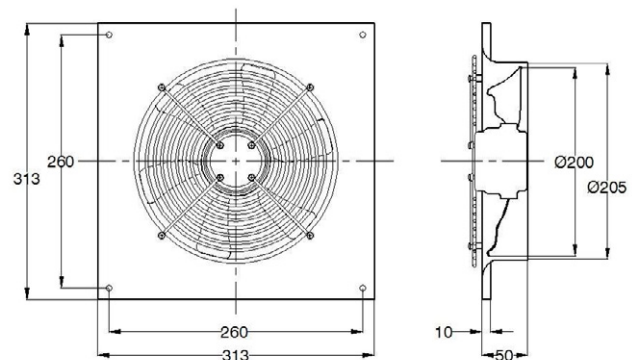


Direct Drive	Operating Volt	Fan RPM		Static Pressure in Inches Wg				
				0.00	0.063	0.125	0.25	0.375
EQ 200-2 100 % speed controllable motor	230	2870	CFM	523	496	467	396	256
			SONES	10.9	10.9	11.2	11.9	11.9
	172	2322	CFM	433	395	353	209	
			SONES	8.3	8.3	8.5	10.2	
	115	1369	CFM	250	177			
			SONES	3.6	3.7			

Wiring Diagram



U₁ blue
U₂ black
Z brown
PE yellow-green



All Dimensions are in mm



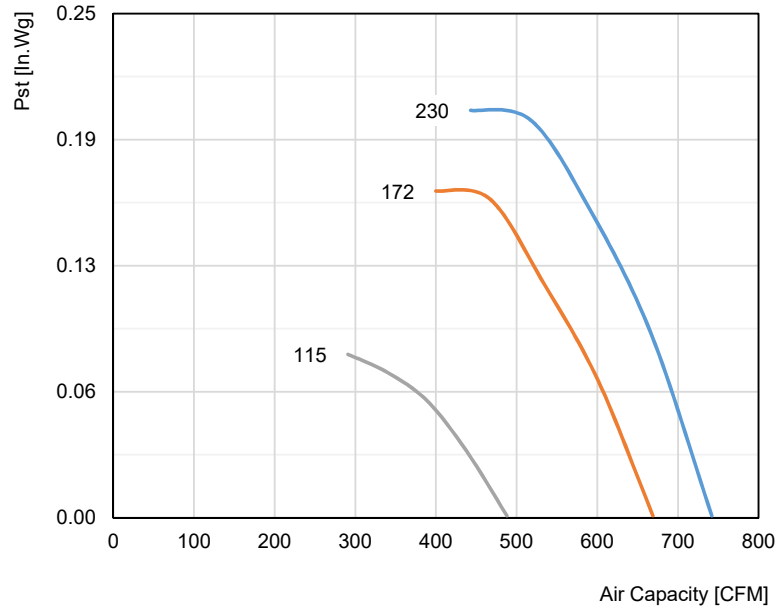
Saudi Fan Industries certifies that the EQ Series Axial Fan shown herein is licensed to bear the AMCA Seal. The ratings shown are based on tests and procedures performed in accordance with AMCA Publication 211, AMCA Publication 311 and comply with the requirements of the AMCA Certified Ratings Program.

Performance certified is for installation type A: Free inlet, free outlet per AMCA Standard 210. Performance ratings include the effects of fan guard and inlet cone. The Sound ratings shown are loudness values in fan sones at 1.5 m (5 ft) in a hemispherical free field calculated per AMCA International Standard 301. Values shown are for: Installation Type A: free inlet hemispherical sone levels.

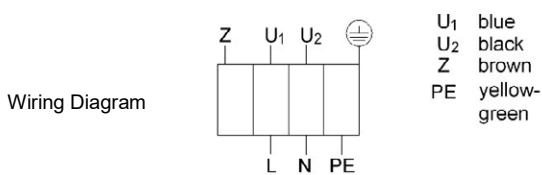


Technical Data

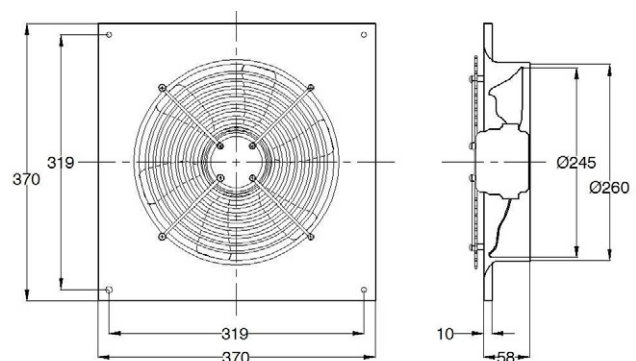
Nominal voltage [VAC]	1~ 230
Frequency [Hz]	60
Maximum Power [W]	89
Rated Power [W]	90
Rated FL Current [A]	0.4
Capacitor (µF)	2
Transported air temperature [°C]	70
Protection rating	IP 44
Wiring Diagram Nr.	1.009
Weight (kg)	4.5
Wall opening size (mm)	265 x 265



Direct Drive	Operating Volt	Fan RPM		Static Pressure in Inches Wg				
				0.00	0.02	0.04	0.06	0.125
EQ.250-4 100 % speed controllable motor	230	1525	CFM	742	726	710	691	625
			SONES	8.1	8.1	8.1	8.1	8.1
	172	1357	CFM	669	650	629	607	520
			SONES	6.0	6.5	6.5	6.5	6.8
	115	954	CFM	488	458	424	373	
			SONES	3.3	3.4	3.4	3.4	



Saudi Fan Industries certifies that the EQ Series Axial Fan shown herein is licensed to bear the AMCA Seal. The ratings shown are based on tests and procedures performed in accordance with AMCA Publication 211, AMCA Publication 311 and comply with the requirements of the AMCA Certified Ratings Program.



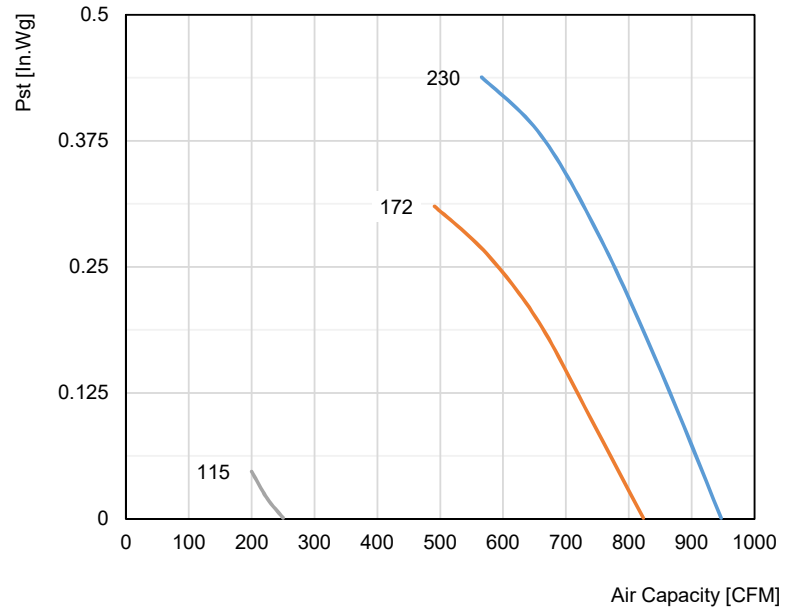
All Dimensions are in mm

Performance certified is for installation type A: Free inlet, free outlet per AMCA Standard 210. Performance ratings include the effects of fan guard and inlet cone. The Sound ratings shown are loudness values in fan sones at 1.5 m (5 ft) in a hemispherical free field calculated per AMCA International Standard 301 . Values shown are for: Installation Type A: free inlet hemispherical sone levels.



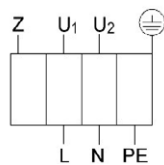
Technical Data

Nominal voltage [VAC]	1~ 230
Frequency [Hz]	60
Maximum Power [W]	202
Rated Power [W]	210
Rated FL Current [A]	1.01
Capacitor (μF)	4
Transported air temperature [°C]	60
Protection rating	IP 44
Wiring Diagram Nr.	1.009
Weight (kg)	4.5
Wall opening size (mm)	265 x 265



Direct Drive	Operating Volt	Fan RPM		Static Pressure in Inches Wg				
				0.00	0.063	0.125	0.25	0.375
EQ 250-2 100 % speed controllable motor	230	2844	CFM	947	906	865	776	666
			SONES	16.4	21.0	21.0	21.0	20.0
	172	2356	CFM	823	771	718	590	
			SONES	12.7	16.3	16.3	16.3	
	115	1517	CFM	250	177			
			SONES	6.1	7.2			

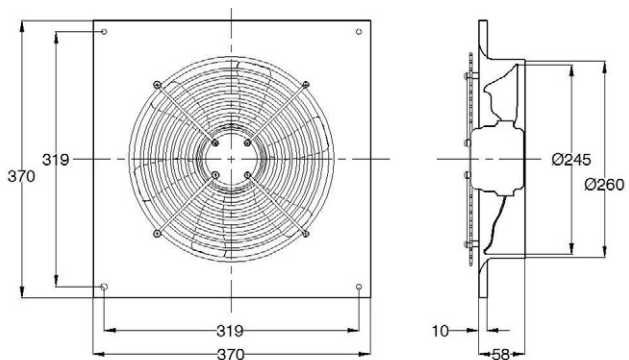
Wiring Diagram



U₁ blue
U₂ black
Z brown
PE yellow-green



Saudi Fan Industries certifies that the EQ Series Axial Fan shown herein is licensed to bear the AMCA Seal. The ratings shown are based on tests and procedures performed in accordance with AMCA Publication 211, AMCA Publication 311 and comply with the requirements of the AMCA Certified Ratings Program.



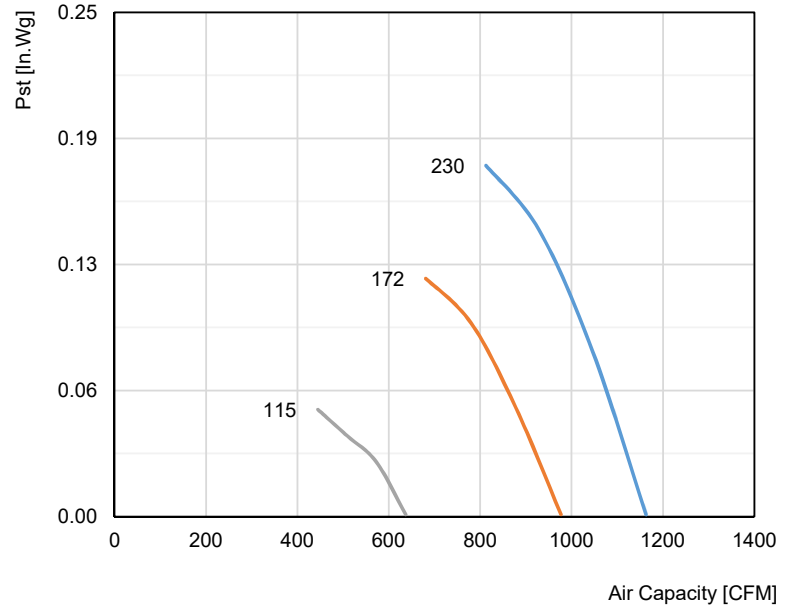
All Dimensions are in mm

Performance certified is for installation type A: Free inlet, free outlet per AMCA Standard 210. Performance ratings include the effects of fan guard and inlet cone. The Sound ratings shown are loudness values in fan sones at 1.5 m (5 ft) in a hemispherical free field calculated per AMCA International Standard 301. Values shown are for: Installation Type A: free inlet hemispherical sone levels.

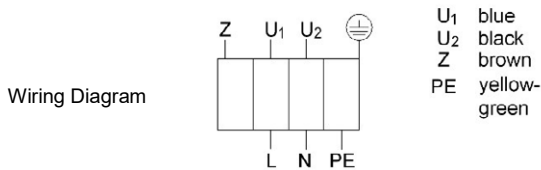


Technical Data

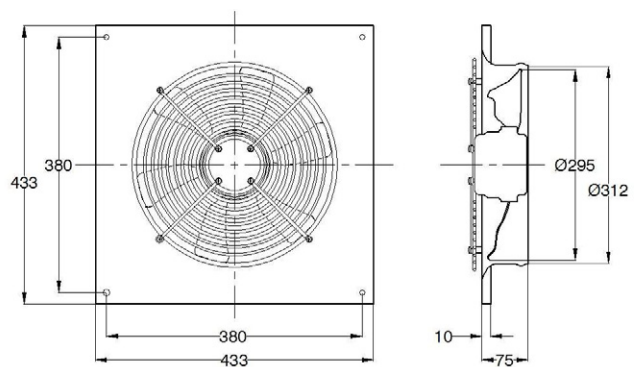
Nominal voltage [VAC]	1~ 230
Frequency [Hz]	60
Maximum Power [W]	125
Rated Power [W]	97
Rated FL Current [A]	0.56
Capacitor (µF)	3
Transported air temperature [°C]	55
Protection rating	IP 44
Wiring Diagram Nr.	1.009
Weight (kg)	6
Wall opening size (mm)	330 x 330



Direct Drive	Operating Volt	Fan RPM		Static Pressure in Inches Wg				
				0.00	0.02	0.03	0.06	0.125
EQ 300-4 100 % speed controllable motor	230	1366	CFM	1163	1136	1121	1073	962
			SONES	8.5	8.5	8.5	8.5	8.1
	172	1131	CFM	977	942	923	857	525
			SONES	6.5	6.5	6.5	6.1	6.7
	115	755	CFM	637	590	558		
			SONES	2.9	2.9	2.9		



Saudi Fan Industries certifies that the EQ Series Axial Fan shown herein is licensed to bear the AMCA Seal. The ratings shown are based on tests and procedures performed in accordance with AMCA Publication 211, AMCA Publication 311 and comply with the requirements of the AMCA Certified Ratings Program.



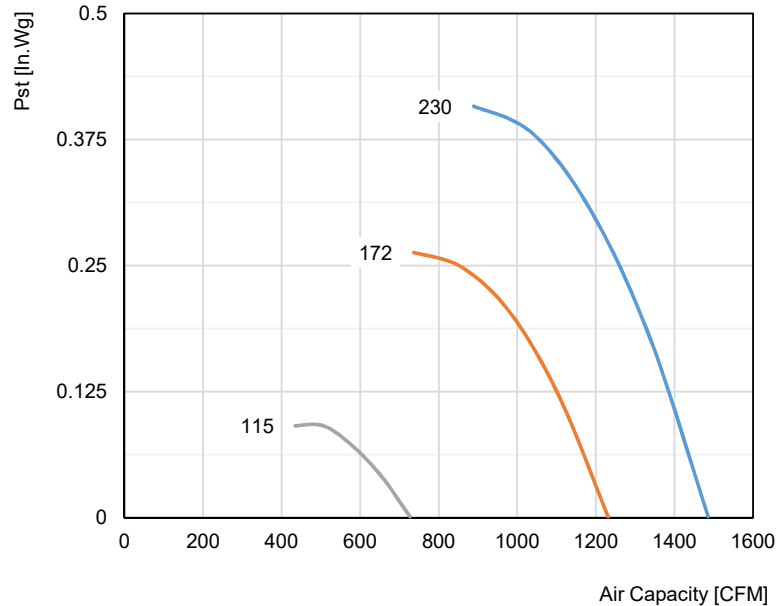
All Dimensions are in mm

Performance certified is for installation type A: Free inlet, free outlet per AMCA Standard 210. Performance ratings include the effects of fan guard and inlet cone. The Sound ratings shown are loudness values in fan sones at 1.5 m (5 ft) in a hemispherical free field calculated per AMCA International Standard 301 . Values shown are for: Installation Type A: free inlet hemispherical sone levels.



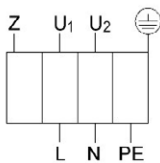
Technical Data

Nominal voltage [VAC]	1~ 230
Frequency [Hz]	60
Maximum Power [W]	332
Rated Power [W]	290
Rated FL Current [A]	1.56
Capacitor (µF)	6
Transported air temperature [°C]	50
Protection rating	IP 44
Wiring Diagram Nr.	1.009
Weight (kg)	3
Wall opening size (mm)	330 x 330



Direct Drive	Operating Volt	Fan RPM		Static Pressure in Inches Wg				
				0.00	0.063	0.125	0.25	0.375
EQ 300-2 100 % speed controllable motor	230	2674	CFM	1486	1435	1382	1252	1051
			SONES	23.0	23.0	23.0	22.0	22.0
	172	2107	CFM	1231	1167	1099	843	
			SONES	12.8	12.8	12.6	14.6	
	115	1257	CFM	727	602			
			SONES	5.5	6.6			

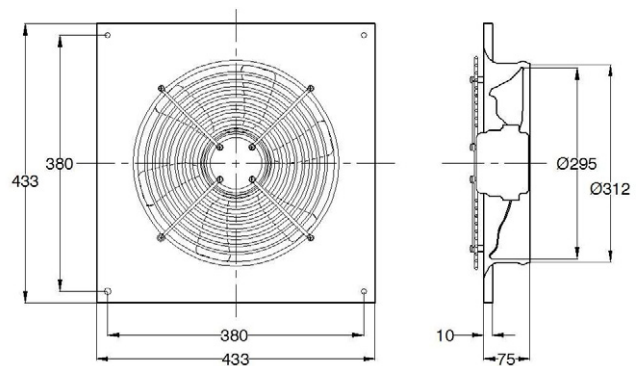
Wiring Diagram



U₁ blue
U₂ black
Z brown
PE yellow-green



Saudi Fan Industries certifies that the EQ Series Axial Fan shown herein is licensed to bear the AMCA Seal. The ratings shown are based on tests and procedures performed in accordance with AMCA Publication 211, AMCA Publication 311 and comply with the requirements of the AMCA Certified Ratings Program.



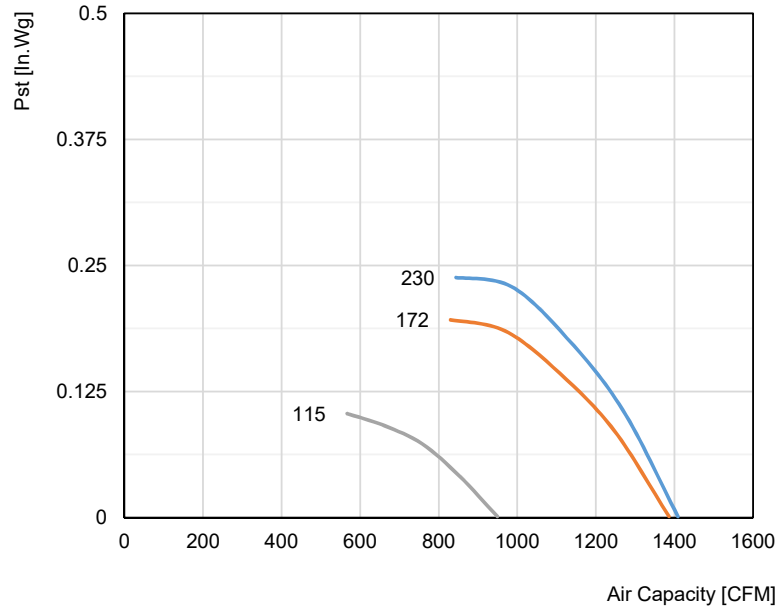
All Dimensions are in mm

Performance certified is for installation type A: Free inlet, free outlet per AMCA Standard 210. Performance ratings include the effects of fan guard and inlet cone. The Sound ratings shown are loudness values in fan sones at 1.5 m (5 ft) in a hemispherical free field calculated per AMCA International Standard 301 . Values shown are for: Installation Type A: free inlet hemispherical sone levels.

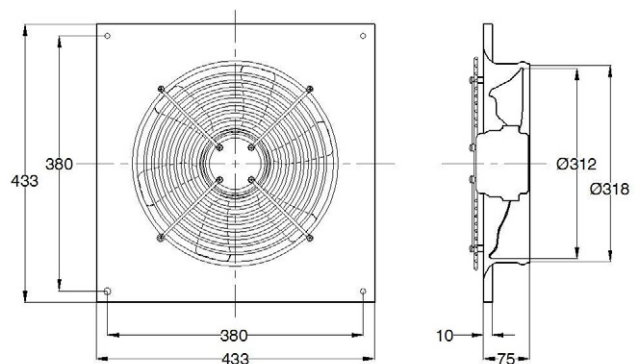
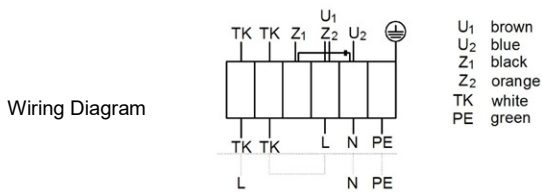


Technical Data

Nominal voltage [VAC]	1~ 230
Frequency [Hz]	60
Maximum Power [W]	226
Rated Power [W]	150
Rated FL Current [A]	0.7
Capacitor (µF)	5
Transported air temperature [°C]	60
Protection rating	IP 54
Wiring Diagram Nr.	1.025
Weight (kg)	5
Wall opening size (mm)	330 x 330



Direct Drive	Operating Volt	Fan RPM		Static Pressure in Inches Wg				
				0.00	0.02	0.03	0.063	0.125
EQ 315-4 100 % speed controllable motor	230	1553	CFM	1409	1384	1370	1327	1232
			SONES	11.3	11.3	11.3	11.3	10.7
	172	1414	CFM	1386	1355	1339	1285	1152
			SONES	9.3	9.3	9.3	9.3	8.9
	115	992	CFM	949	903	879	789	
			SONES	4.7	4.7	4.7	4.4	



All Dimensions are in mm



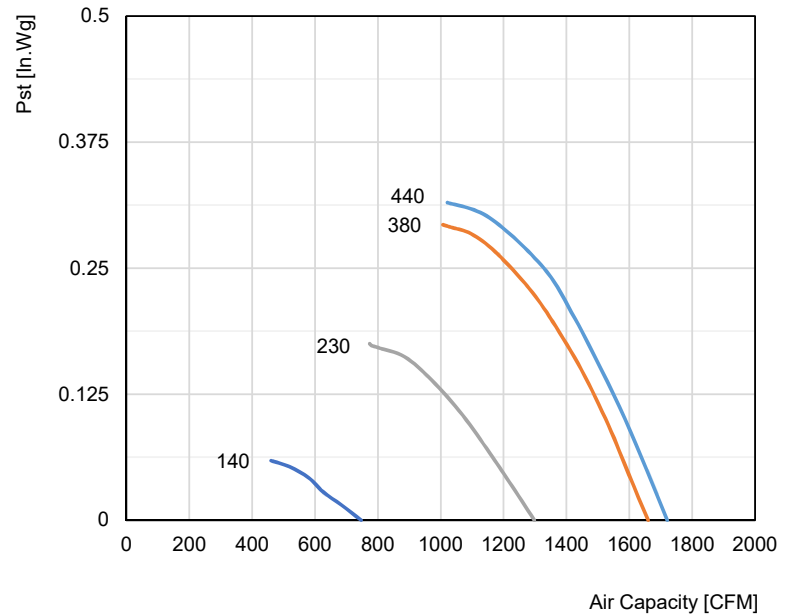
Saudi Fan Industries certifies that the EQ Series Axial Fan shown herein is licensed to bear the AMCA Seal. The ratings shown are based on tests and procedures performed in accordance with AMCA Publication 211, AMCA Publication 311 and comply with the requirements of the AMCA Certified Ratings Program.

Performance certified is for installation type A: Free inlet, free outlet per AMCA Standard 210. Performance ratings include the effects of fan guard and inlet cone. The Sound ratings shown are loudness values in fan sones at 1.5 m (5 ft) in a hemispherical free field calculated per AMCA International Standard 301 . Values shown are for: Installation Type A: free inlet hemispherical sone levels.

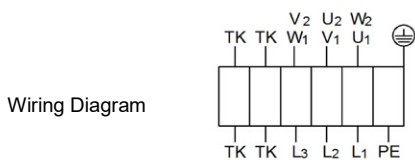


Technical Data

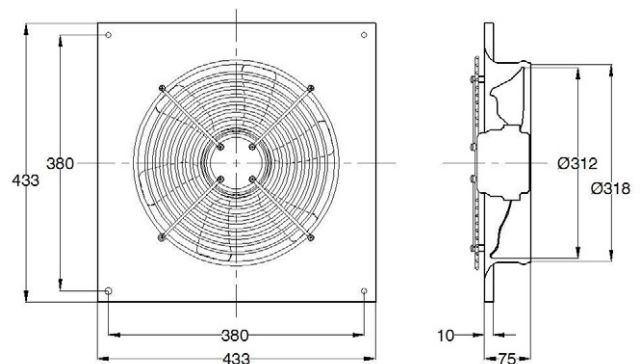
Nominal voltage [VAC]	3~ 230 / 380 - 440
Frequency [Hz]	60
Rated Power [W]	110
Rated FL Current [A]	0.49 / 0.28
RPM [min-1]	1390
Capacitor (µF)	-
Transported air temperature [°C]	60
Protection rating	IP 44
Wiring Diagram Nr.	01.006
Weight (kg)	6.5
Wall opening size (mm)	330 x 330



Direct Drive	Operating Volt	Fan RPM		Static Pressure in Inches Wg				
				0.00	0.063	0.125	0.190	0.25
DQ 315-4 100 % speed controllable motor	440	1620	CFM	1721	1638	1549	1444	1328
	380	1570	CFM	1660	1576	1486	1369	
	230	1220	CFM	1298	1165	1011		
	140	705	CFM	747				



- U₁ brown
- U₁ blue
- W₁ black
- U₂ red
- V₂ grey
- W₂ orange
- TK white
- PE yellow green



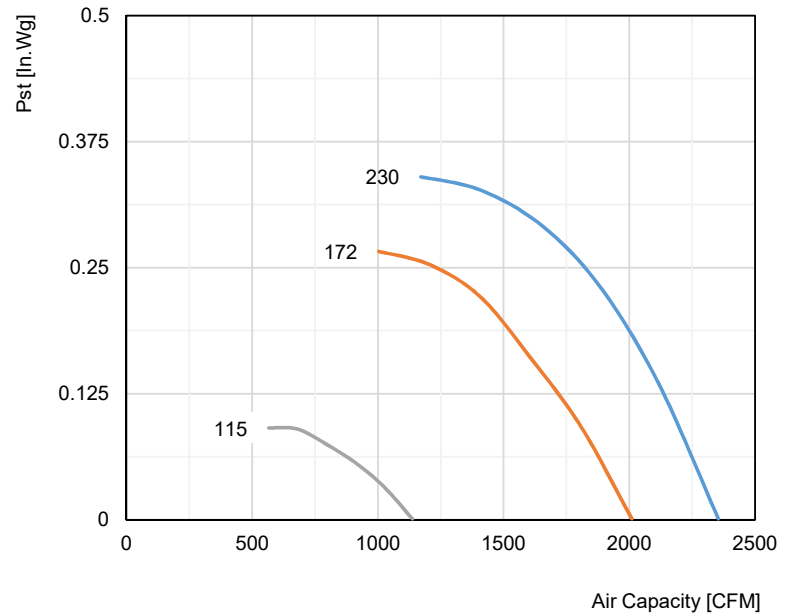
All Dimensions are in mm

Performance certified is for installation type A: Free inlet, free outlet per AMCA Standard 210. Performance ratings include the effects of fan guard and inlet cone. However this model is not carrying AMCA Certified Seal.

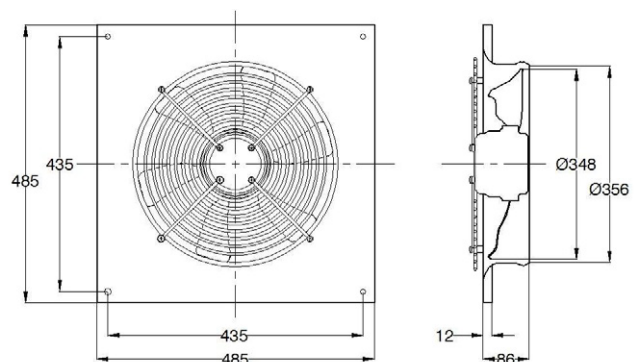
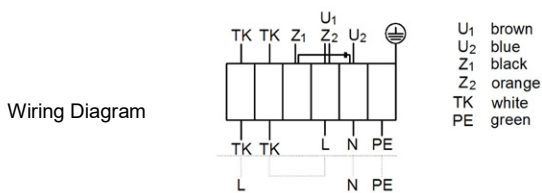


Technical Data

Nominal voltage [VAC]	1~ 230
Frequency [Hz]	60
Maximum Power [W]	252
Rated Power [W]	230
Rated FL Current [A]	1.05
Capacitor (µF)	5
Transported air temperature [°C]	60
Protection rating	IP 54
Wiring Diagram Nr.	1.025
Weight (kg)	8
Wall opening size (mm)	385 x 385



Direct Drive	Operating Volt	Fan RPM		Static Pressure in Inches Wg				
				0.00	0.02	0.063	0.125	0.25
EQ 350-4 100 % speed controllable motor	230	1623	CFM	2354	2320	2245	2135	1811
			SONES	14.5	14.5	14.5	14.8	16.7
	172	1423	CFM	2010	1968	1874	1712	1225
			SONES	11.8	12.0	12.0	12.0	14.1
	115	834	CFM	1137	1069	873		
			SONES	5.1	12.0	12.0		



All Dimensions are in mm



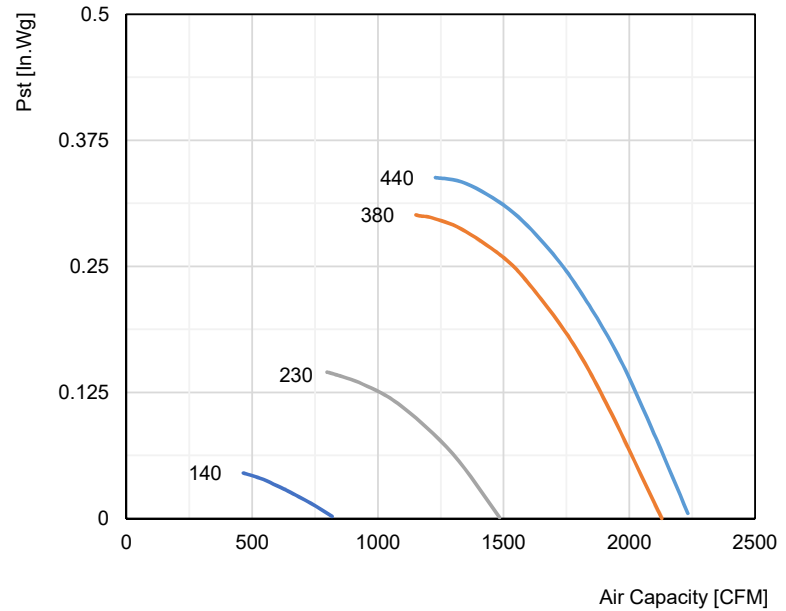
Saudi Fan Industries certifies that the EQ Series Axial Fan shown herein is licensed to bear the AMCA Seal. The ratings shown are based on tests and procedures performed in accordance with AMCA Publication 211, AMCA Publication 311 and comply with the requirements of the AMCA Certified Ratings Program.

Performance certified is for installation type A: Free inlet, free outlet per AMCA Standard 210. Performance ratings include the effects of fan guard and inlet cone. The Sound ratings shown are loudness values in fan sones at 1.5 m (5 ft) in a hemispherical free field calculated per AMCA International Standard 301 . Values shown are for: Installation Type A: free inlet hemispherical sone levels.

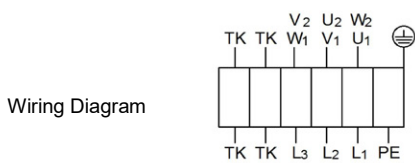


Technical Data

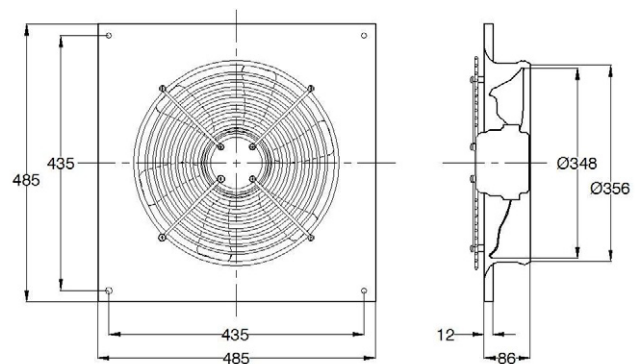
Nominal voltage [VAC]	3~ 230 / 380 - 440
Frequency [Hz]	60
Rated Power [W]	230
Rated FL Current [A]	0.79 / 0.46
RPM [min ⁻¹]	1540
Capacitor [μF]	-
Transported air temperature [°C]	40
Protection rating	IP 54
Wiring Diagram Nr.	01.006
Weight (kg)	8
Wall opening size (mm)	385 x 385



Direct Drive	Operating Volt	Fan RPM		Static Pressure in Inches Wg				
				0.00	0.063	0.125	0.190	0.25
DQ 350-4 100 % speed controllable motor	440	1552	CFM	2233	2135	2023	1888	1731
	380	1461	CFM	2129	2009	1883	1728	1533
	230	1026	CFM	1484	1302	998		
	140	763	CFM	818				



- U₁ brown
- U₁ blue
- W₁ black
- U₂ red
- V₂ grey
- W₂ orange
- TK white
- PE yellow
- PE green



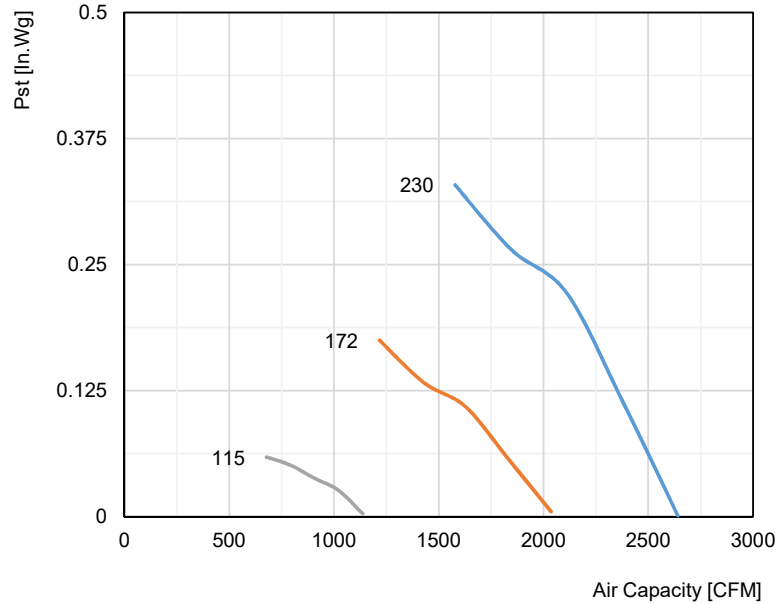
All Dimensions are in mm

Performance certified is for installation type A: Free inlet, free outlet per AMCA Standard 210. Performance ratings include the effects of fan guard and inlet cone. However this model is not carrying AMCA Certified Seal.

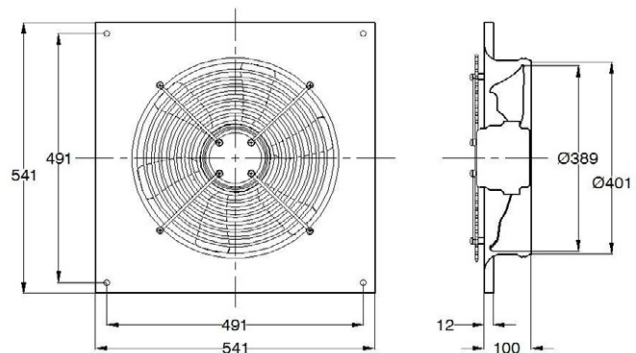
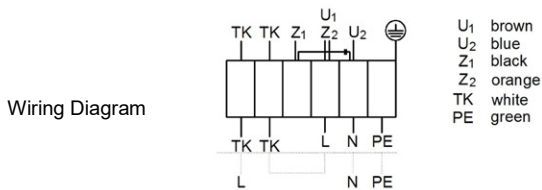


Technical Data

Nominal voltage [VAC]	1~ 230
Frequency [Hz]	60
Maximum Power [W]	326
Rated Power [W]	340
Rated FL Current [A]	1.4
Capacitor (µF)	6
Transported air temperature [°C]	50
Protection rating	IP 54
Wiring Diagram Nr.	1.025
Weight (kg)	9
Wall opening size (mm)	420 x 420



Direct Drive	Operating Volt	Fan RPM	Static Pressure in Inches Wg					
			0.00	0.03	0.063	0.125	0.25	
EQ 400-4 100 % speed controllable motor	230	1434	CFM	2641	2574	2498	2351	1937
			SONES	12.7	12.7	12.7	12.5	12.5
	172	1072	CFM	2036	1938	1811	1495	
			SONES	8.0	8.0	8.0	7.7	
	115	629	CFM	1137	984			
			SONES	3.0	3.0			



All Dimensions are in mm



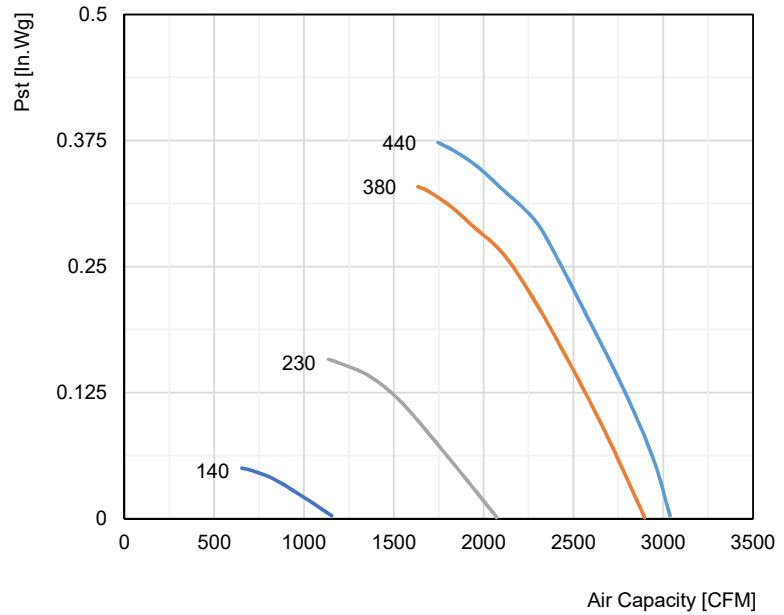
Saudi Fan Industries certifies that the EQ Series Axial Fan shown herein is licensed to bear the AMCA Seal. The ratings shown are based on tests and procedures performed in accordance with AMCA Publication 211, AMCA Publication 311 and comply with the requirements of the AMCA Certified Ratings Program.

Performance certified is for installation type A: Free inlet, free outlet per AMCA Standard 210. Performance ratings include the effects of fan guard and inlet cone. The Sound ratings shown are loudness values in fan sones at 1.5 m (5 ft) in a hemispherical free field calculated per AMCA International Standard 301. Values shown are for: Installation Type A: free inlet hemispherical sone levels.

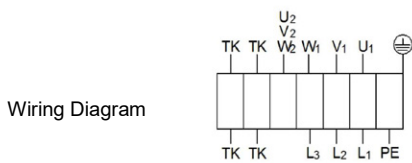


Technical Data

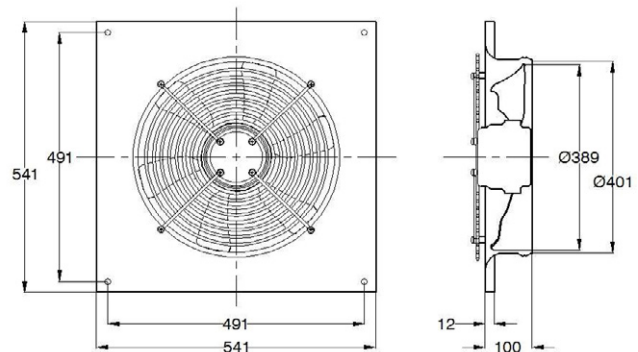
Nominal voltage [VAC]	3~ 230 / 380 - 440
Frequency [Hz]	60
Rated Power [W]	280
Rated FL Current [A]	0.92 / 0.53
RPM [min-1]	1450
Capacitor (µF)	-
Transported air temperature [°C]	60
Protection rating	IP 54
Wiring Diagram Nr.	01.005
Weight (kg)	9
Wall opening size (mm)	420 x 420



Direct Drive	Operating Volt	Fan RPM		Static Pressure in Inches Wg				
				0.00	0.063	0.125	0.190	0.25
DQ 400-4 100 % speed controllable motor	440	1519	CFM	3037	2936	2787	2606	2433
	380	1431	CFM	2897	2738	2563	2366	2157
	230	1007	CFM	2071	1791	1471		
	140	578	CFM	1154				



- U₁ brown
- U₁ blue
- W₁ black
- U₂ red
- V₂ grey
- W₂ orange
- TK white
- PE yellow green



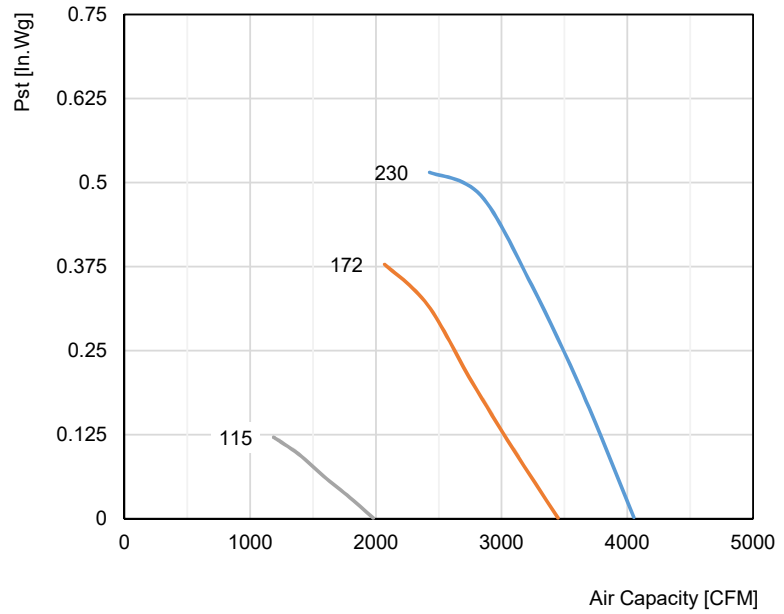
All Dimensions are in mm

Performance certified is for installation type A: Free inlet, free outlet per AMCA Standard 210. Performance ratings include the effects of fan guard and inlet cone. However this model is not carrying AMCA Certified Seal.

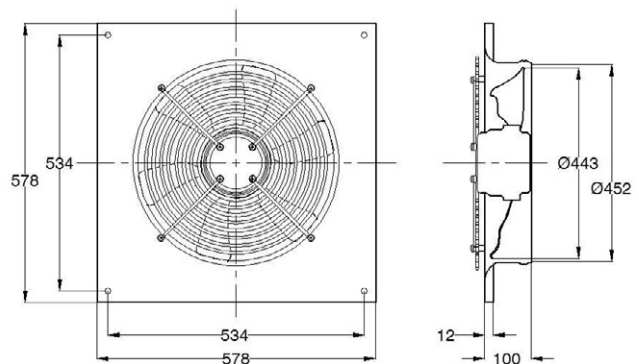
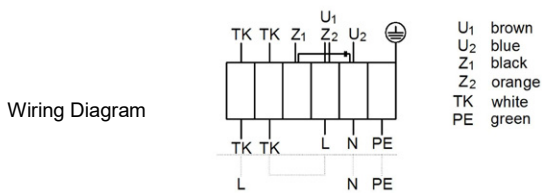


Technical Data

Nominal voltage [VAC]	1~ 230
Frequency [Hz]	60
Maximum Power [W]	646
Rated Power [W]	530
Rated FL Current [A]	2.5
Capacitor (µF)	12
Transported air temperature [°C]	50
Protection rating	IP 54
Wiring Diagram Nr.	1.025
Weight (kg)	12
Wall opening size (mm)	495 x 495



Direct Drive	Operating Volt	Fan RPM		Static Pressure in Inches Wg				
				0.00	0.063	0.125	0.25	0.50
EQ 450-4 100 % speed controllable motor	230	1607	CFM	4052	3919	3781	3485	2607
			SONES	18.3	18.3	18.1	23.0	23.0
	172	1334	CFM	3449	3235	3021	2620	1083
			SONES	13.4	13.4	13.3	14.1	15.4
	115	771	CFM	1979	1587	1099		
			SONES	5.8	5.7	6.6		



All Dimensions are in mm



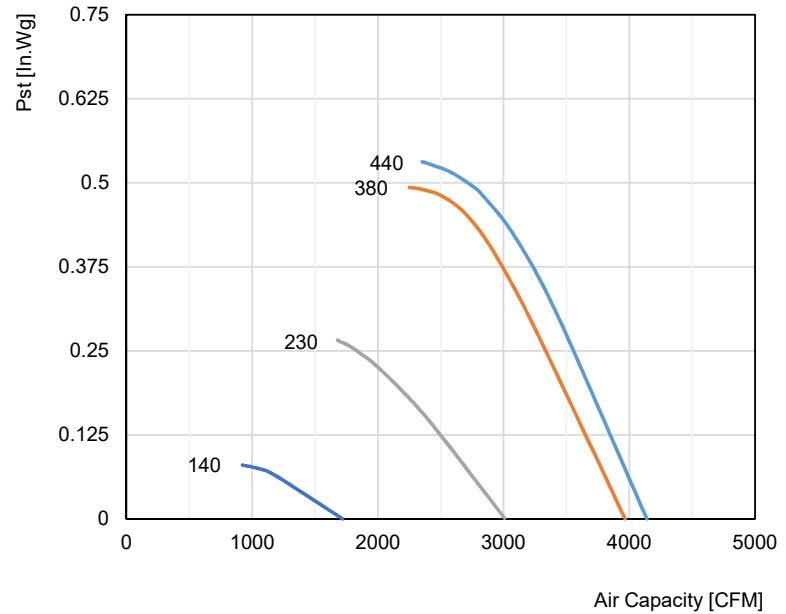
Saudi Fan Industries certifies that the EQ Series Axial Fan shown herein is licensed to bear the AMCA Seal. The ratings shown are based on tests and procedures performed in accordance with AMCA Publication 211, AMCA Publication 311 and comply with the requirements of the AMCA Certified Ratings Program.

Performance certified is for installation type A: Free inlet, free outlet per AMCA Standard 210. Performance ratings include the effects of fan guard and inlet cone. The Sound ratings shown are loudness values in fan sones at 1.5 m (5 ft) in a hemispherical free field calculated per AMCA International Standard 301. Values shown are for: Installation Type A: free inlet hemispherical sone levels.

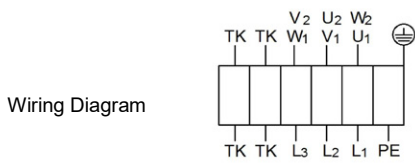


Technical Data

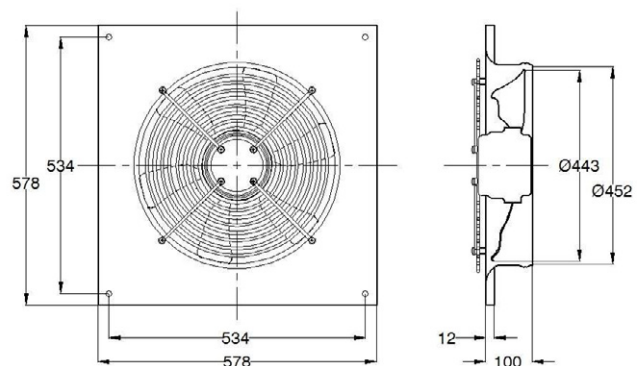
Nominal voltage [VAC]	3~ 230 / 380 - 440
Frequency [Hz]	60
Rated Power [W]	500
Rated FL Current [A]	2.0 / 1.0
RPM [min-1]	1610
Capacitor (µF)	-
Transported air temperature [°C]	60
Protection rating	IP 54
Wiring Diagram Nr.	01.006
Weight (kg)	12
Wall opening size (mm)	495 x 495



Direct Drive	Operating Volt	Fan RPM		Static Pressure in Inches Wg				
				0.00	0.125	0.250	0.375	0.50
DQ 450-4 100 % speed controllable motor	440	1623	CFM	4140	3846	3552	3219	2710
	380	1554	CFM	3967	3650	3333	2987	
	230	1147	CFM	3008	2495	1829		
	140	663	CFM	1719				



- U₁ brown
- U₁ blue
- W₁ black
- U₂ red
- V₂ grey
- W₂ orange
- TK white
- PE yellow green



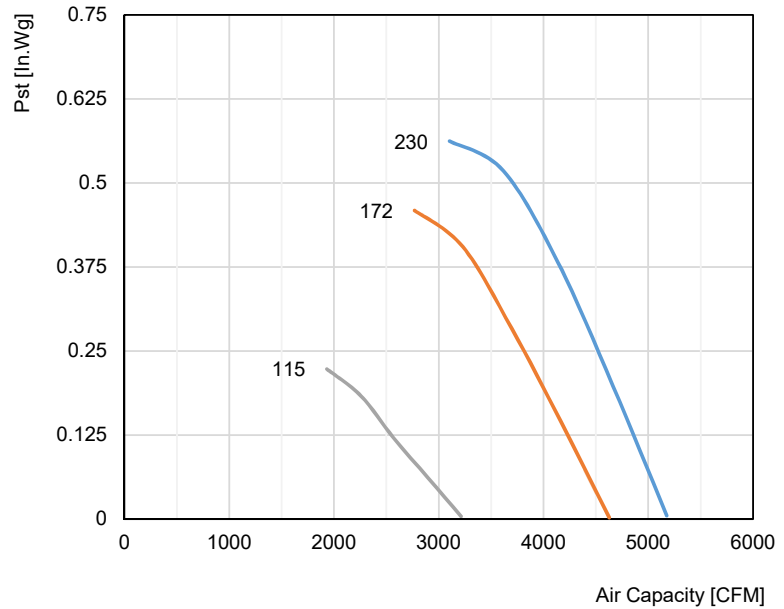
All Dimensions are in mm

Performance certified is for installation type A: Free inlet, free outlet per AMCA Standard 210. Performance ratings include the effects of fan guard and inlet cone. However this model is not carrying AMCA Certified Seal.

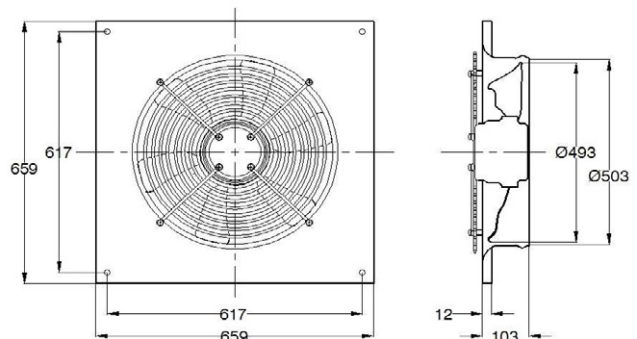
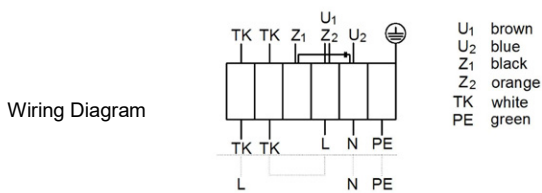


Technical Data

Nominal voltage [VAC]	1~ 230
Frequency [Hz]	60
Maximum Power [W]	888
Rated Power [W]	720
Rated FL Current [A]	3.5
Capacitor (µF)	16
Transported air temperature [°C]	50
Protection rating	IP 54
Wiring Diagram Nr.	1.025
Weight (kg)	18
Wall opening size (mm)	550 x 550



Direct Drive	Operating Volt	Fan RPM		Static Pressure in Inches Wg				
				0.00	0.063	0.125	0.25	0.50
EQ 500-4 100% speed controllable motor	230	1569	CFM	5176	5023	4858	4515	3686
			SONES	15.7	15.7	15.2	15.8	21.0
	172	1376	CFM	4627	4432	4230	3810	2035
			SONES	13.4	13.4	13.4	13.6	17.2
	115	947	CFM	3214	2891	2547	1289	
			SONES	7.6	7.5	8.5	8.5	



All Dimensions are in mm



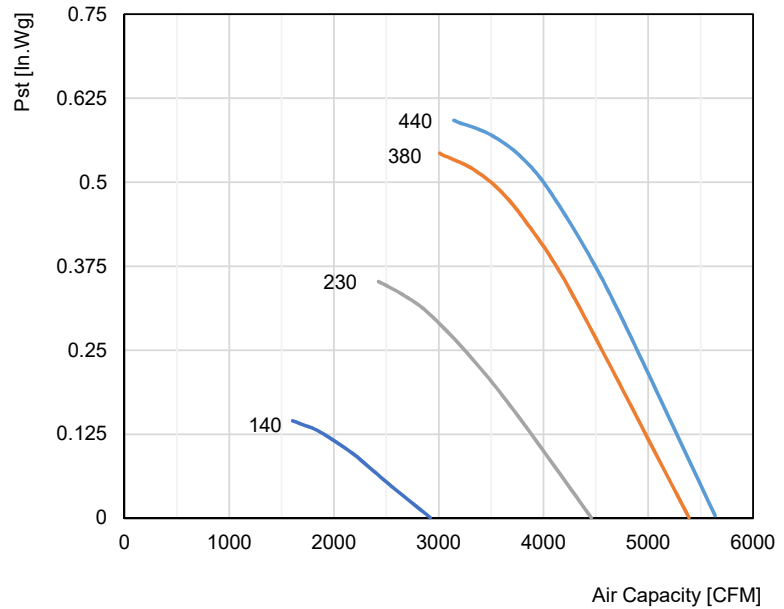
Saudi Fan Industries certifies that the EQ Series Axial Fan shown herein is licensed to bear the AMCA Seal. The ratings shown are based on tests and procedures performed in accordance with AMCA Publication 211, AMCA Publication 311 and comply with the requirements of the AMCA Certified Ratings Program.

Performance certified for installation type A: Free inlet, free outlet per AMCA Standard 210. Performance ratings include the effects of fan guard and inlet cone. The Sound ratings shown are loudness values in fan sones at 1.5 m (5 ft) in a hemispherical free field calculated per AMCA International Standard 301. Values shown are for: Installation Type A: free inlet hemispherical sone levels.

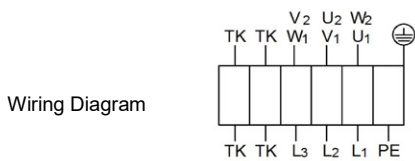


Technical Data

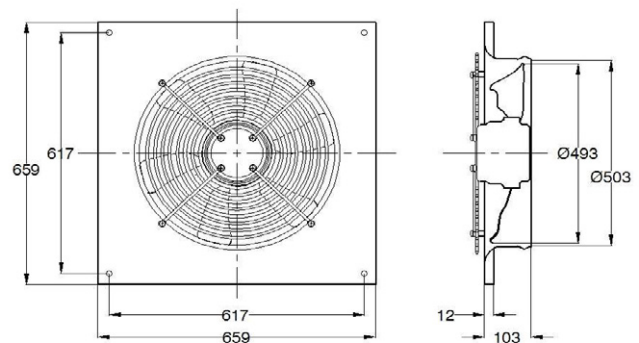
Nominal voltage [VAC]	3~ 230 / 380 - 440
Frequency [Hz]	60
Rated Power [W]	500
Rated FL Current [A]	2.25 / 1.3
RPM [min-1]	1480
Capacitor (µF)	-
Transported air temperature [°C]	60
Protection rating	IP 54
Wiring Diagram Nr.	01.006
Weight (kg)	18
Wall opening size (mm)	550 x 550



Direct Drive	Operating Volt	Fan RPM		Static Pressure in Inches Wg				
				0.00	0.125	0.250	0.375	0.50
DQ 500-4 100 % speed controllable motor	440	1567	CFM	5638	5272	4893	4491	3992
	380	1482	CFM	5389	4973	4553	4110	3485
	230	1183	CFM	4457	3881	3245		
	140	773	CFM	2919	1899			



- U₁ brown
- U₁ blue
- W₁ black
- U₂ red
- V₂ grey
- W₂ orange
- TK white
- PE yellow green



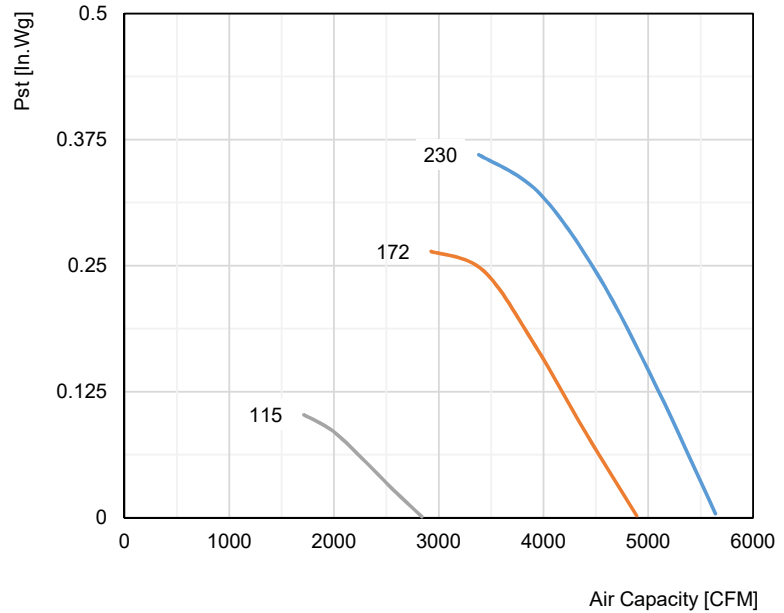
All Dimensions are in mm

Performance certified is for installation type A: Free inlet, free outlet per AMCA Standard 210. Performance ratings include the effects of fan guard and inlet cone. However this model is not carrying AMCA Certified Seal.

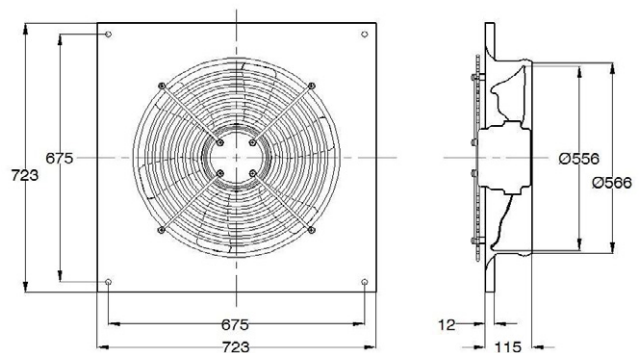
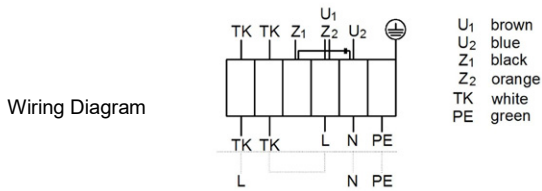


Technical Data

Nominal voltage [VAC]	1~ 230
Frequency [Hz]	60
Maximum Power [W]	632
Rated Power [W]	520
Rated FL Current [A]	2.5
Capacitor (µF)	10
Transported air temperature [°C]	45
Protection rating	IP 54
Wiring Diagram Nr.	1.025
Weight (kg)	19
Wall opening size (mm)	605 x 605



Direct Drive	Operating Volt	Fan RPM		Static Pressure in Inches Wg				
				0.00	0.063	0.125	0.25	0.32
EQ 560-6 100 % speed controllable motor	230	1083	CFM	5642	5380	5100	4456	4022
			SONES	14.5	14.5	14.3	15.1	17.5
	172	936	CFM	4890	4532	4175	3296	
			SONES	10.3	14.3	14.3	11.3	
	115	553	CFM	2839	2231			
			SONES	5.3	5.5			



All Dimensions are in mm



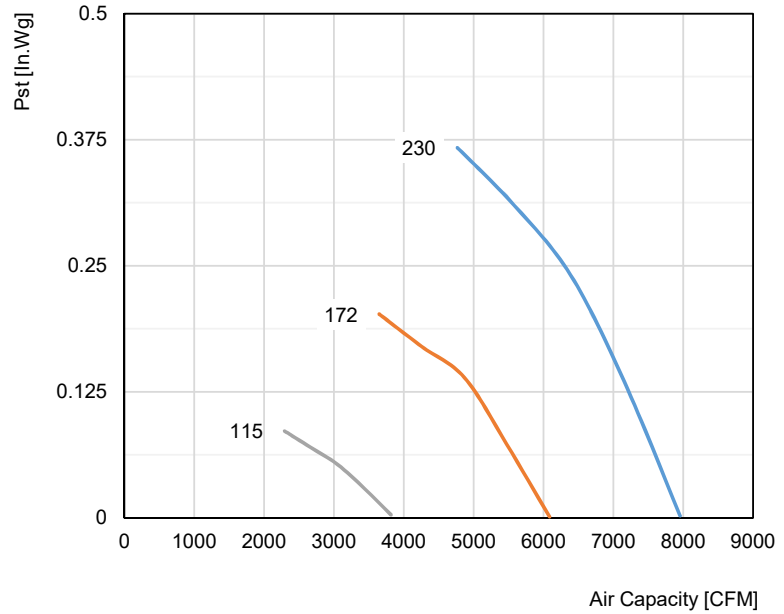
Saudi Fan Industries certifies that the EQ Series Axial Fan shown herein is licensed to bear the AMCA Seal. The ratings shown are based on tests and procedures performed in accordance with AMCA Publication 211, AMCA Publication 311 and comply with the requirements of the AMCA Certified Ratings Program.

Performance certified is for installation type A: Free inlet, free outlet per AMCA Standard 210. Performance ratings include the effects of fan guard and inlet cone. The Sound ratings shown are loudness values in fan sones at 1.5 m (5 ft) in a hemispherical free field calculated per AMCA International Standard 301 . Values shown are for: Installation Type A: free inlet hemispherical sone levels.

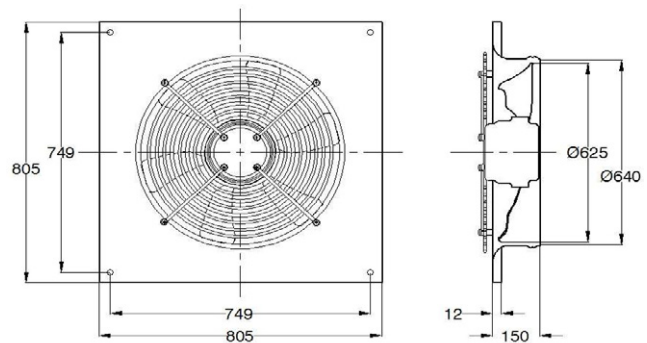
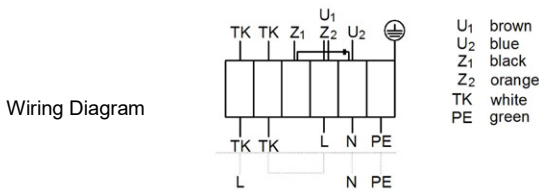


Technical Data

Nominal voltage [VAC]	1~ 230
Frequency [Hz]	60
Maximum Power [W]	1050
Rated Power [W]	1050
Rated FL Current [A]	4.7
Capacitor (µF)	20
Transported air temperature [°C]	70
Protection rating	IP 54
Wiring Diagram Nr.	1.025
Weight (kg)	28
Wall opening size (mm)	690 x 690



Direct Drive	Operating Volt	Fan RPM		Static Pressure in Inches Wg				
				0.00	0.03	0.063	0.125	0.25
EQ 630-6 100 % speed controllable motor	230	898	CFM	7957	7789	7593	7217	6281
			SONES	14.5	14.8	14.8	14.8	14.3
	172	683	CFM	6087	5840	5563	4997	
			SONES	9.8	9.8	9.8	9.7	
	115	430	CFM	3816	3421	2833		
			SONES	4.6	4.6	4.5		



All Dimensions are in mm



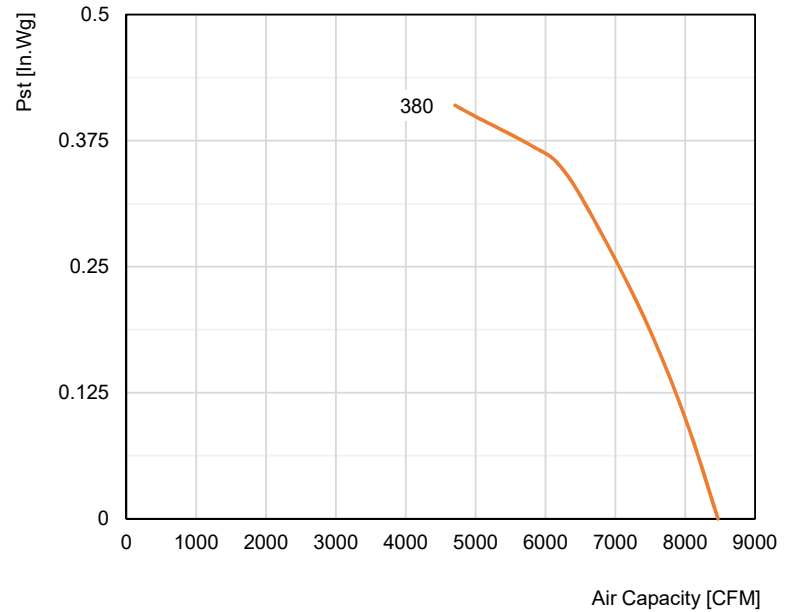
Saudi Fan Industries certifies that the EQ Series Axial Fan shown herein is licensed to bear the AMCA Seal. The ratings shown are based on tests and procedures performed in accordance with AMCA Publication 211, AMCA Publication 311 and comply with the requirements of the AMCA Certified Ratings Program.

Performance certified is for installation type A: Free inlet, free outlet per AMCA Standard 210. Performance ratings include the effects of fan guard and inlet cone. The Sound ratings shown are loudness values in fan sones at 1.5 m (5 ft) in a hemispherical free field calculated per AMCA International Standard 301 . Values shown are for: Installation Type A: free inlet hemispherical sone levels.

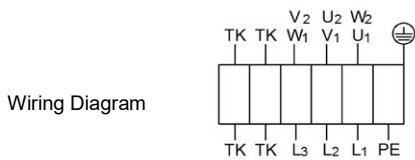


Technical Data

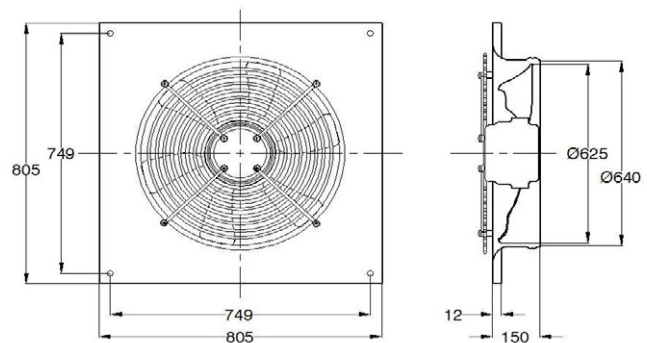
Nominal voltage [VAC]	3~ 380
Frequency [Hz]	60
Rated Power [W]	1030
Rated FL Current [A]	2.0
RPM [min-1]	940
Capacitor (µF)	-
Transported air temperature [°C]	55
Protection rating	IP 54
Wiring Diagram Nr.	01.006
Weight (kg)	25
Wall opening size (mm)	690 x 690



Direct Drive	Operating Volt	Fan RPM		Static Pressure in Inches Wg				
				0.00	0.063	0.125	0.250	0.375
DQ 630-6 100 % speed controllable motor	380	940	CFM	8470	8176	7853	7039	4459



- U₁ brown
- U₁ blue
- W₁ black
- U₂ red
- V₂ grey
- W₂ orange
- TK white
- PE yellow green



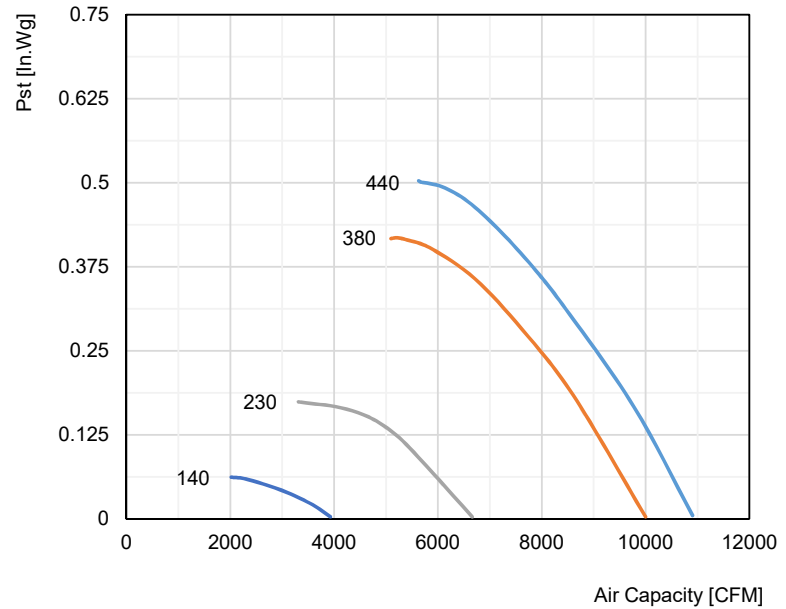
All Dimensions are in mm

Performance certified is for installation type A: Free inlet, free outlet per AMCA Standard 210. Performance ratings include the effects of fan guard and inlet cone. However this model is not carrying AMCA Certified Seal.

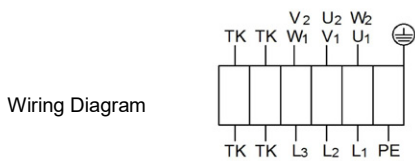


Technical Data

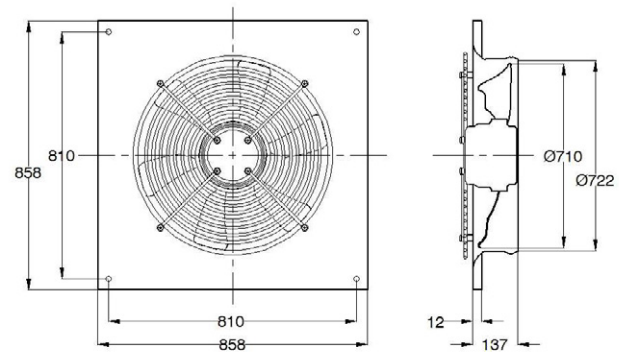
Nominal voltage [VAC]	3~ 230 / 380 - 440
Frequency [Hz]	60
Rated Power [W]	1150
Rated FL Current [A]	4.5 / 2.25
RPM [min-1]	815
Capacitor (µF)	-
Transported air temperature [°C]	55
Protection rating	IP 54
Wiring Diagram Nr.	01.006
Weight (kg)	31
Wall opening size (mm)	780 x 780



Direct Drive	Operating Volt	Fan RPM		Static Pressure in Inches Wg				
				0.00	0.125	0.250	0.375	0.50
DQ 710-6 100 % speed controllable motor	440	900	CFM	10905	10067	9023	7819	5732
	380	821	CFM	10000	9060	7942	6378	
	230	547	CFM	6661	5170			
	140	316	CFM	3928				



- U1 brown
- U1 blue
- W1 black
- U2 red
- V2 grey
- W2 orange
- TK white
- PE yellow green



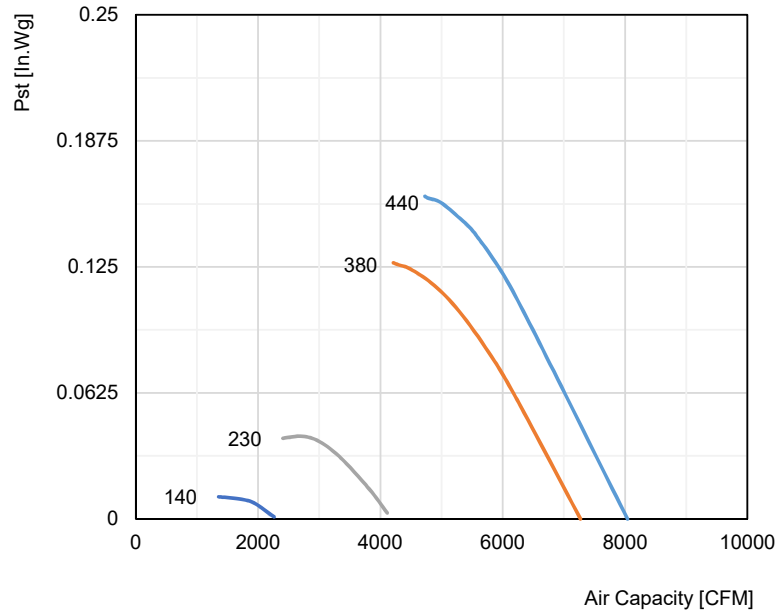
All Dimensions are in mm

Performance certified is for installation type A: Free inlet, free outlet per AMCA Standard 210. Performance ratings include the effects of fan guard and inlet cone. However this model is not carrying AMCA Certified Seal.

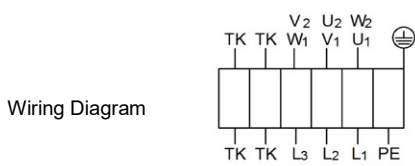


Technical Data

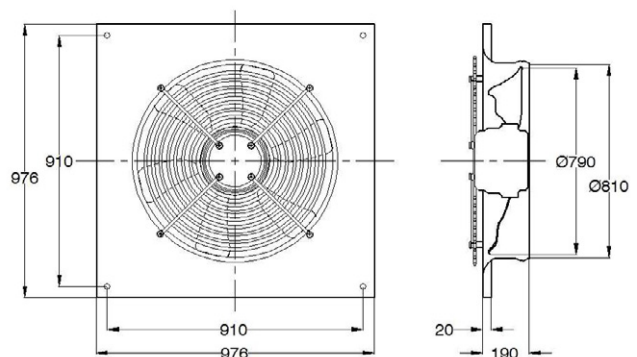
Nominal voltage [VAC]	3~ 230 / 380 - 440
Frequency [Hz]	60
Rated Power [W]	350
Rated FL Current [A]	1.64 / 0.82
RPM [min-1]	475
Capacitor (µF)	-
Transported air temperature [°C]	70
Protection rating	IP 54
Wiring Diagram Nr.	01.006
Weight (kg)	35
Wall opening size (mm)	885 x 885



Direct Drive	Operating Volt	Fan RPM		Static Pressure in Inches Wg				
				0.00	0.03	0.063	0.10	0.125
DQ 800-12 100 % speed controllable motor	440	495	CFM	8041	7509	7003	6380	5904
	380	446	CFM	7272	6710	6173	5355	4206
	230	261	CFM	4111	3283			
	140	143	CFM	2262				



- U₁ brown
- U₁ blue
- W₁ black
- U₂ red
- V₂ grey
- W₂ orange
- TK white
- PE yellow green



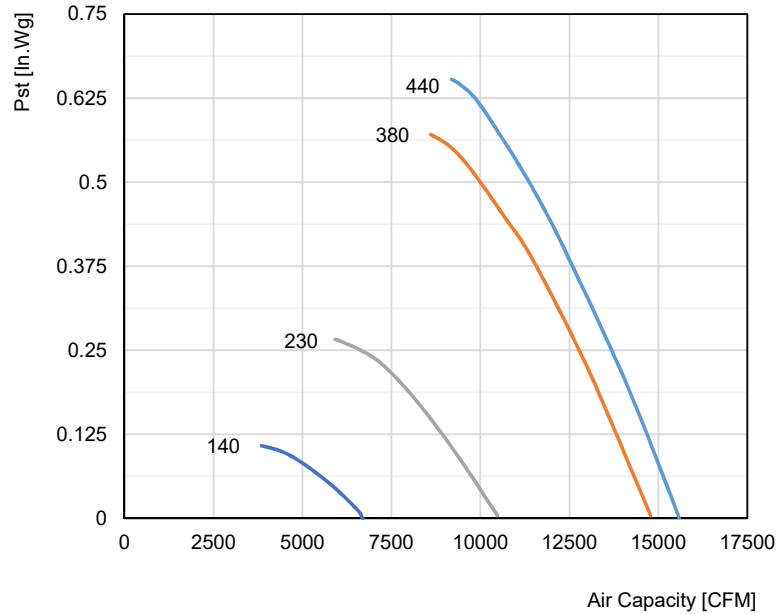
All Dimensions are in mm

Performance certified is for installation type A: Free inlet, free outlet per AMCA Standard 210. Performance ratings include the effects of fan guard and inlet cone. However this model is not carrying AMCA Certified Seal.

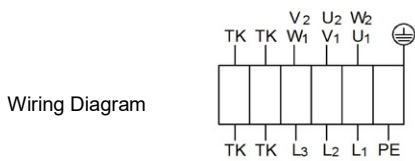


Technical Data

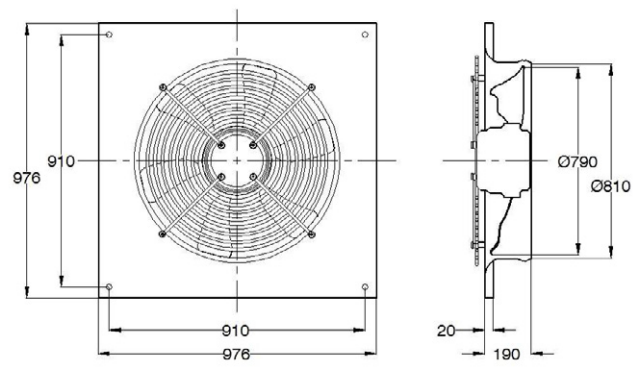
Nominal voltage [VAC]	3~ 230 / 380 - 440
Frequency [Hz]	60
Rated Power [W]	1900
Rated FL Current [A]	6.6 / 3.8
RPM [min-1]	900
Capacitor (µF)	-
Transported air temperature [°C]	50
Protection rating	IP 54
Wiring Diagram Nr.	01.006
Weight (kg)	35
Wall opening size (mm)	885 x 885



Direct Drive	Operating Volt	Fan RPM		Static Pressure in Inches Wg				
				0.00	0.125	0.250	0.500	0.625
DQ 800-6 100 % speed controllable motor	440	968	CFM	15584	14662	13668	11365	8987
	380	916	CFM	14783	13805	12757	9987	
	230	643	CFM	10480	8912	6627		
	140	414	CFM	6690				



- U₁ brown
- U₁ blue
- W₁ black
- U₂ red
- V₂ grey
- W₂ orange
- TK white
- PE yellow green



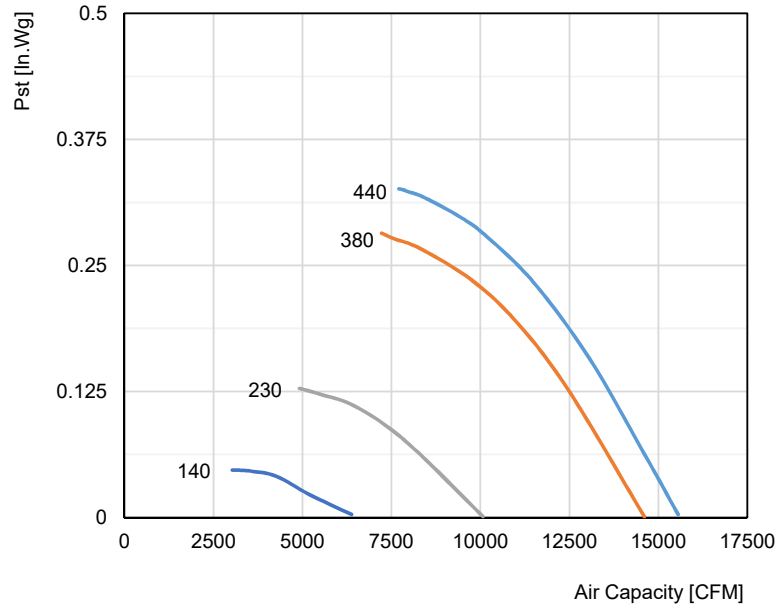
All Dimensions are in mm

Performance certified is for installation type A: Free inlet, free outlet per AMCA Standard 210. Performance ratings include the effects of fan guard and inlet cone. However this model is not carrying AMCA Certified Seal.

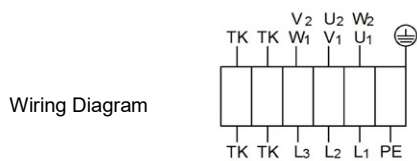


Technical Data

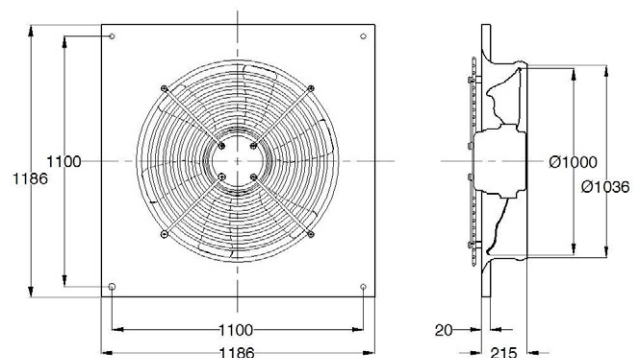
Nominal voltage [VAC]	3~ 230 / 380 - 440
Frequency [Hz]	60
Rated Power [W]	900
Rated FL Current [A]	4.5 / 2.1
RPM [min-1]	470
Capacitor (µF)	-
Transported air temperature [°C]	70
Protection rating	IP 54
Wiring Diagram Nr.	01.006
Weight (kg)	65
Wall opening size (mm)	1080 x 1080



Direct Drive	Operating Volt	Fan RPM		Static Pressure in Inches Wg				
				0.00	0.063	0.125	0.190	0.250
DQ 1000-12 100 % speed controllable motor	440	509	CFM	15557	14614	13596	12393	11006
	380	471	CFM	14606	13561	12495	11111	9080
	230	319	CFM	10072	8308	5232		
	140	195	CFM	6380				



- U₁ brown
- U₁ blue
- W₁ black
- U₂ red
- V₂ grey
- W₂ orange
- TK white
- PE yellow green



All Dimensions are in mm

Performance certified is for installation type A: Free inlet, free outlet per AMCA Standard 210. Performance ratings include the effects of fan guard and inlet cone. However this model is not carrying AMCA Certified Seal.

ACCESSORIES



Speed Controller

- Reducing Speed for fan. Available for Use with External rotor motors.
- They provide an economical means of system balancing with direct drive fans (Single phase fans).
- UL listed Speed controllers are available upon request .

Disconnecting Switch

- A wide range selection of NEMA rated Switches are available for positive electrical shutoff and safety, including dust tight, rainproof, corrosion resistant.
- Switches may be internally or externally mounted.
- UL listed Switches are available upon request



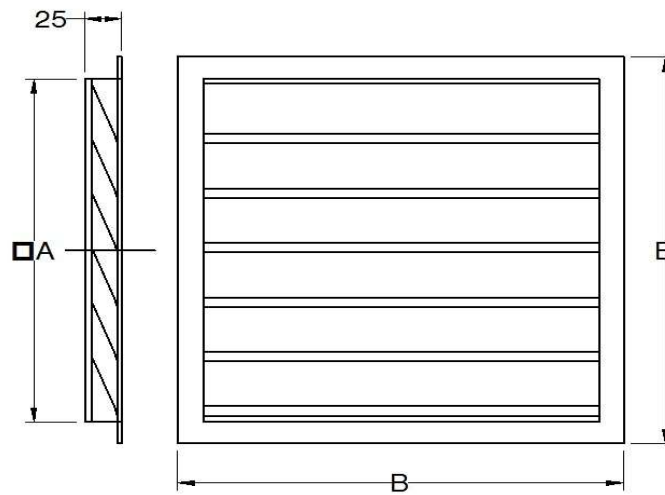
Variable Frequency Drive (VFD)



- Variable Frequency Drive is a type of motor controller that drives an electric motor by varying the frequency and voltage supplied to the electric motor.
- Especially used to control three phase motors .
- Available at different power ranges

Wall Shutter

- Wall shutters are used for exhaust only and are made of heavy aluminum frame and roll-formed aluminum blades.
- The wall shutters can be installed easily.
- Standard construction is powder coated.

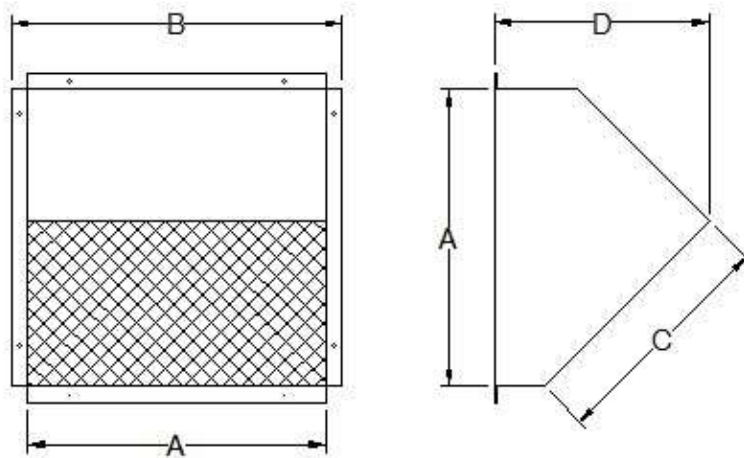


Model	A	B	Recommended Wall Opening Size
200	212	270	215X215
250	262	320	265X265
300/315	327	385	330X330
350	382	440	385X385
400	417	475	420X420
450	492	550	495X495
500	547	605	550X550
560	602	660	605X605
630	687	745	690X690
710	777	835	780X780
800	882	940	885X885
1000	1077	1135	1080X1080

All Dimensions are in mm

Wall Caps / Weather Cover

- Wall caps are designed to prevent rain from exhaust and supply wall openings.
- They are designed to be wall mounted and can be installed easily with wall shutters.
- Protection Guards are provided. Standard construction is galvanized steel, painted upon request

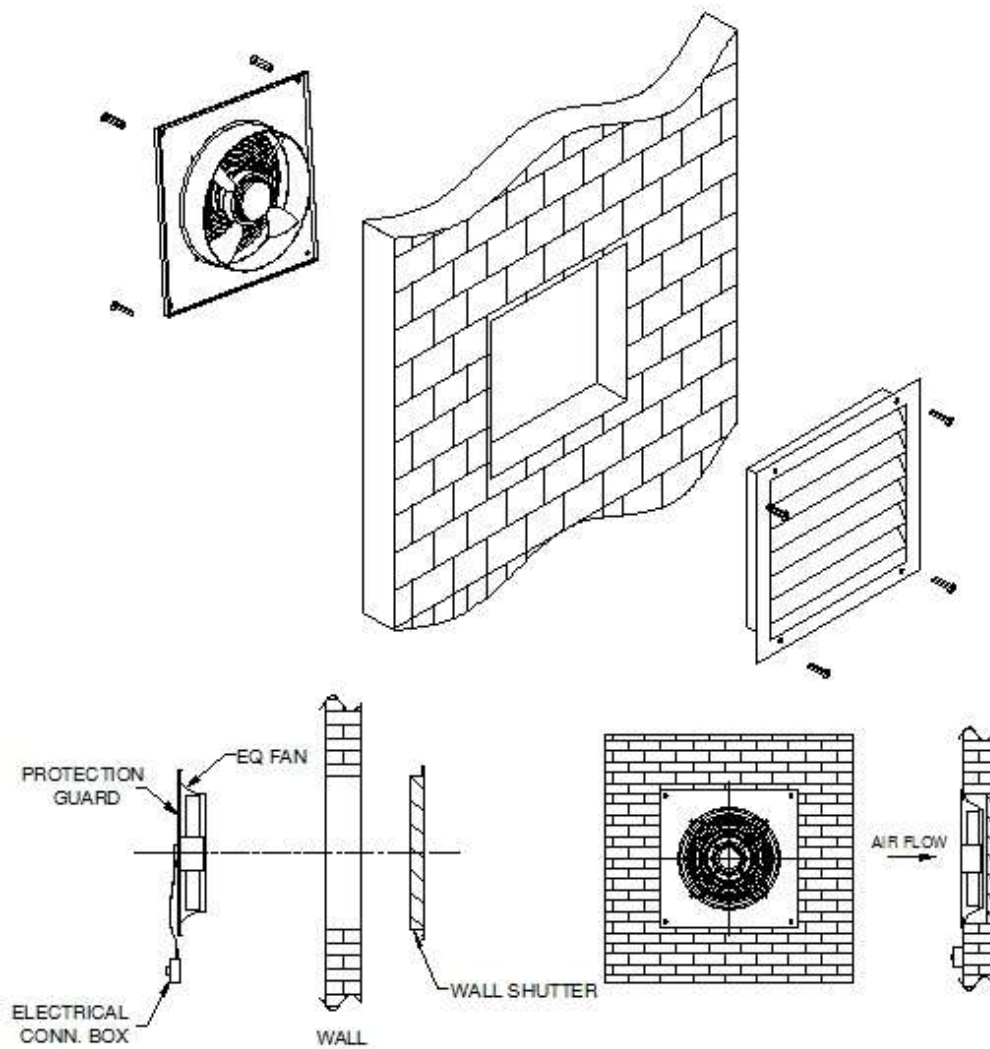


Model	A	B	C	D
200	360	410	280	260
250	420	470	330	303
300/315	480	530	375	347
350	535	585	420	386
400	590	640	460	426
450	625	675	490	451
500	735	815	575	531
560	800	880	629	578
630	880	960	690	635
710	935	1015	735	675
800	1050	1130	825	750
1000	1260	1340	990	910

All Dimensions are in mm

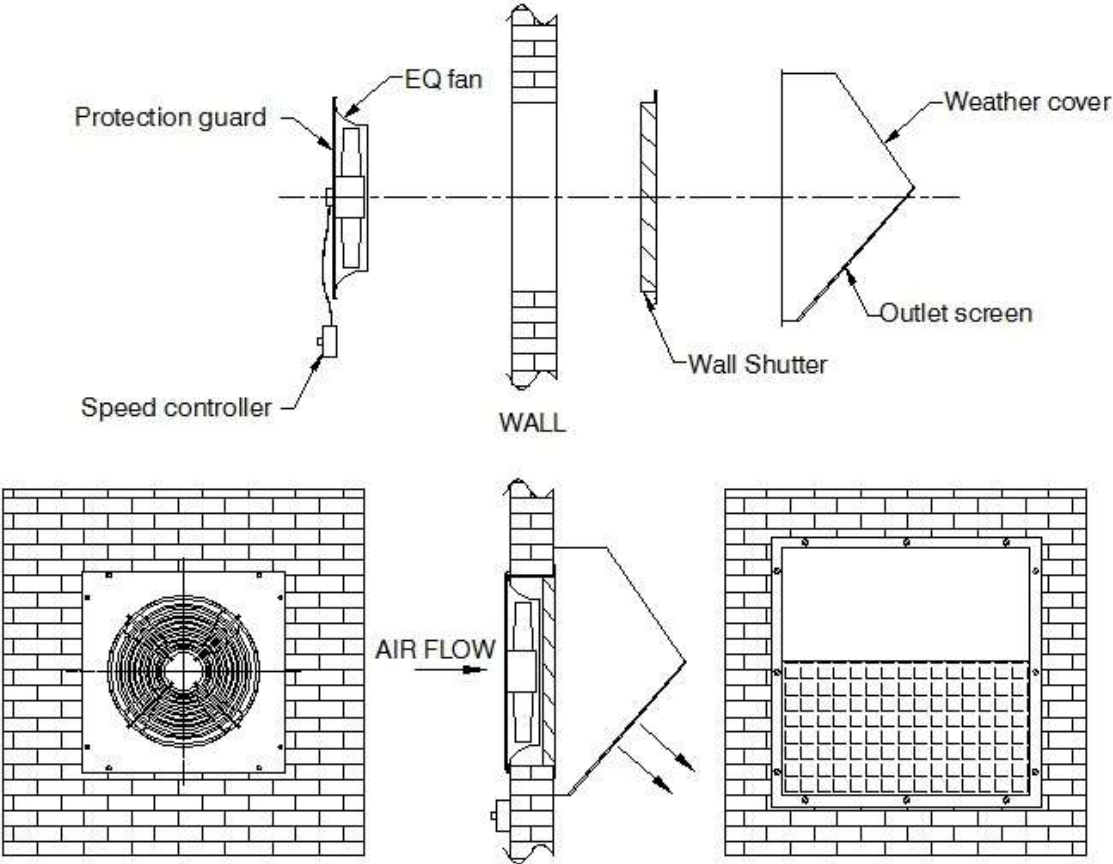
INSTALLATION

Installation with Wall Shutter



INSTALLATION

Installation with Wall Cap



Guide for Specification

Complete unit shall have an external rotor motor suitable for 220V 1 Phase or 220V/380-440 V- 3 Phase 60Hz Power supply where required.

The complete fan shall be assembled using a compact combination of external rotor motor close coupled to a forward curve impeller to realize best possible coating. The external rotor motor shall have a minimum of IP44 construction per DIN 40050; the insulation windings shall have class "B" construction with additional protection against moisture; each external rotor motor shall be 100% compatible ordinary electronic speed controller by varying speed from 100% to 10% of rated speed (Note: For 3 phase external rotor motors other method of motor speed control ie, variable speed driver are available. Each motor shall have a built-in thermal overload protection.

Fan casing shall be made from cold rolled steel sheet with powder coating for corrosion protection and shall be provided a fan guard for personal protection.

Both propeller blade & external rotor motor shall be balanced at 2 levels per DIN/ISO 1940 G 2.5.

Each fan shall be equipped in to an IP 44 terminal box with a wiring diagram.

The propeller blades shall be made from either galvanized steel sheet / plastic / cast aluminum where required.

WARRANTY STATEMENT

- b. Damage caused by abuse, accident, fire, flood.....etc :and**
 - c. Defects due to absence of magnetic starters sized to correct overload rating**
-
- Any units or parts ,which proved defective during the warranty period will be replaced at our option when returned to our factory .**

Saudi Fan Industries

REACH US

For contacts & inquiry

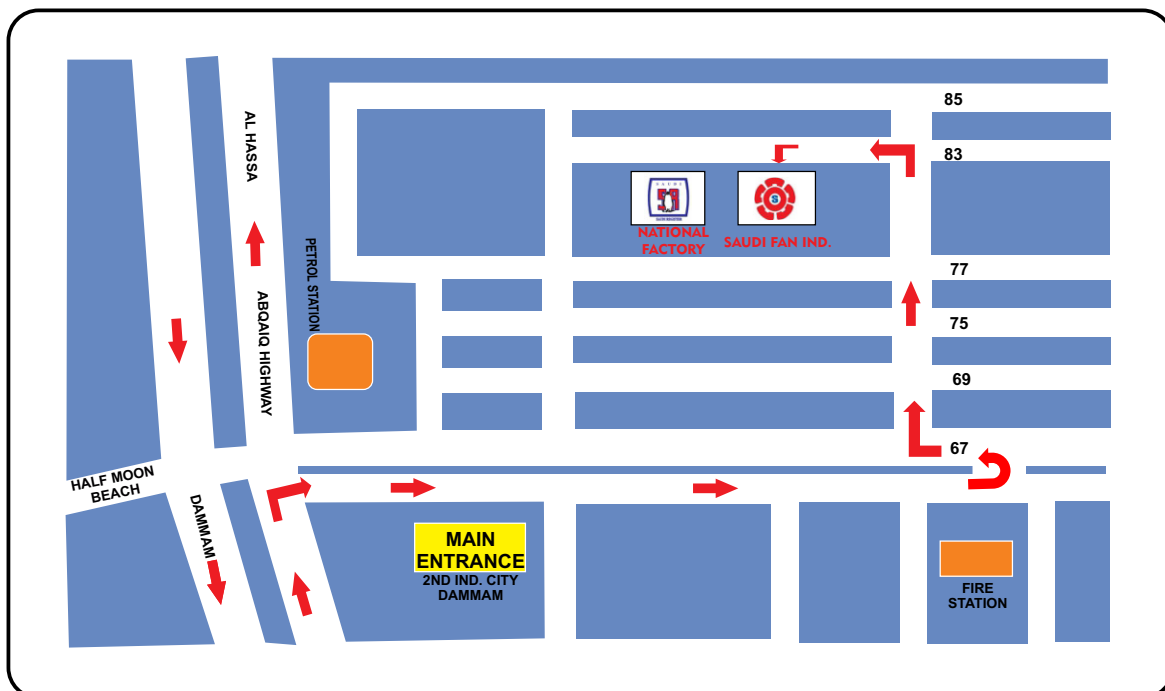
- **Head Office** (Sales & Marketing)
Tel. : (013) 882 1713 - 882 3515 Fax: (013) 882 3066
E-mail : sales@refhouse.com / rhadmin@refhouse.com
- **Manufacturing Divisions**
Dammam 2nd industrial City
National Factory Tel. : (013) 812 1282 Fax: (013) 812 1280
Saudi Fan Industries Tel. : (013) 812 1866 Fax: (013) 812 1894
- **Contracting Divisions**
Klimatechnik Tel. : (013) 882 3534 Fax: (013) 882 2807
- **Trading Divisions**
Refrigeration House
Al-Khobar Tel. : (013) 869 1043 Fax: (013) 898 4161
Riyadh Tel. : (011) 476 9720 Fax: (011) 477 5430
Jeddah Tel. : (012) 665 2276 Fax: (012) 661 2265

www.refhouse.com

Refrigeration House Group
P.O Box 1923 - Al-Khobar 31952
SAUDI ARABIA



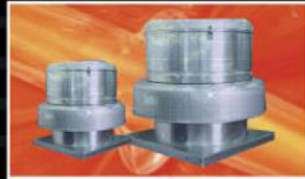
Klimatechnik



OUR LOCATION



Centrifugal Roof Fan
Direct Drive DH / DV



Centrifugal Roof Fan
Belt & Direct Driven / RTC



Centrifugal Radial Fan
Direct Drive ERAE-ERAD / DRAE-DRAD



Centrifugal Radial Fan
Belt Driven HRE-TRE / HRZ-TRZ



Square Inline Fans
Belt & Direct Driven / ISQ



Fresh Air Musfan
Belt & Direct Driven / MU



Air Box Fresh Air Fan
Belt & Direct Driven / AirBox



Centrifugal Twin Fan
Belt & Direct Driven / TW



Axial Low Pressure Fan
Direct Drive EG / DG



Axial High Pressure Fan
Direct Drive AND



Inline Centrifugal Duct Fan
Direct Drive EKAE / EKAD



Inline Centrifugal Tube Fan
Direct Drive R / RS



Centrifugal Silent Fan
Direct Drive SSF



Axial Circulation Fan
Direct Drive SACF 30" - 36"



Axial Agricultural Fan
Direct Drive SAAF 125"



Axial Portable Tunnel Fan
Direct Drive SPTF 8" - 12"