



LOUVERS

MODEL ASTL

ALUMINUM SAND TRAP LOUVER

STANDARD CONSTRUCTION

FRAME

EXTRUDED ALUMINUM 6063-T5, 2mm (5/64") THICK & 75mm (3") DEPTH.

BLADES

EXTRUDED ALUMINUM 6063-T5, 2mm (5/64") THICK

BLADE CENTERS:

75mm (3") MAXIMUM CENTERS TO CENTER CORROSION RESISTANT STEEL FASTNERS USED AT ASSEMBLY

SAND DRIP :

EXTRUDED ALUMINUM 6063-T5, 1.6mm (1/16") THICK

SCREEN:

BIRD SCREEN 10x10mm MADE OF 1mm WIRE AS STANDARD (OPTIONAL)

INSECT SCREEN:

ALUMINUM 18 x 16 MESH CORROSION RESISTANT (OPTIONAL)

FILTER:

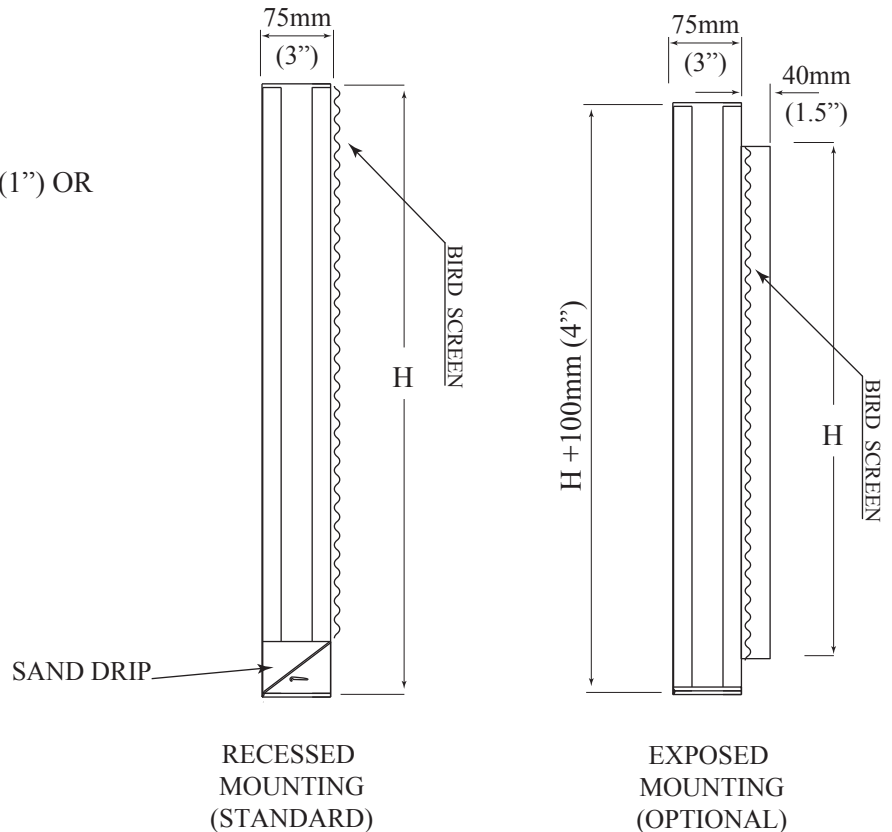
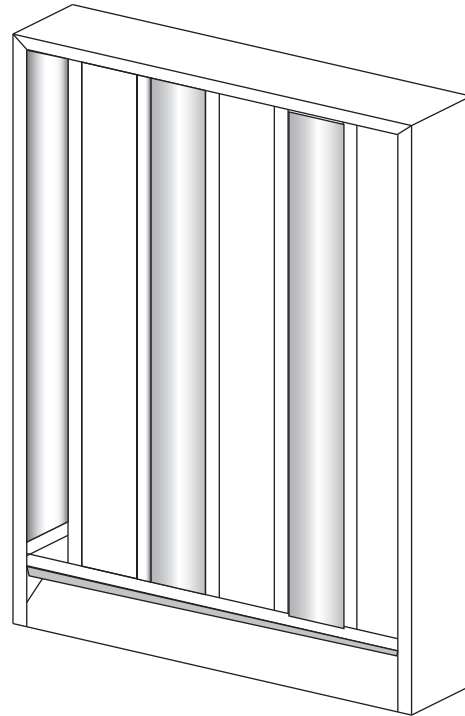
ALUMINUM WASHABLE FILTER 25mm (1") OR 50mm (2") THICK (OPTIONAL)

FINISH:

MILL FINISH (STANDARD)
ANODIZE (OPTIONAL)
ALL RAL COLOR (OPTIONAL)

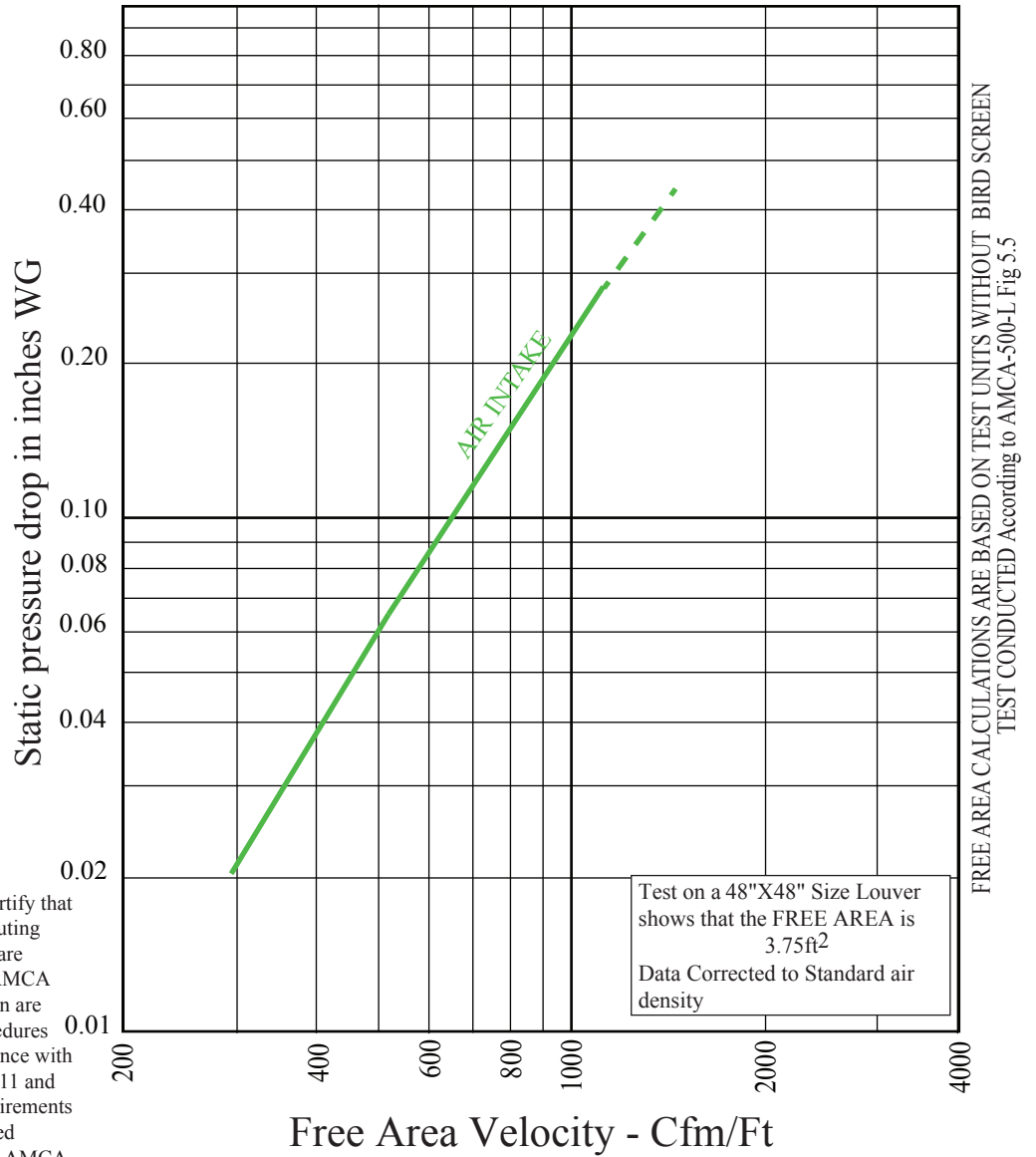
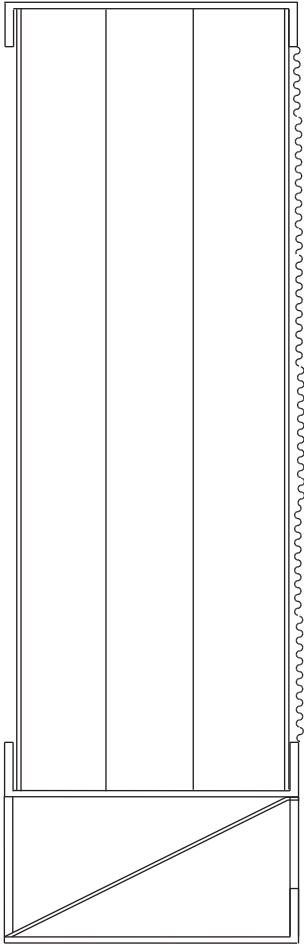
SIZES:

MINIMUM WIDTH: 12"
MINIMUM HEIGHT: 12"
MAXIMUM SINGLE SECTION: WIDTH 120" X HEIGHT 90"
MULTIPLE SECTION: UNLIMITED





LOUVERS MODEL ASTL AIR PERFORMANCE



KBE International certify that **ASTL** Recessed mounting louver shown herein are licensed to bear the AMCA seal. The rating shown are based on test & procedures performed in accordance with AMCA Publication 511 and comply with the requirements of the AMCA Certified Ratings Program The AMCA Certified Rating Seal applies to Air Performance rating Only.

WIDTH

HEIGHT

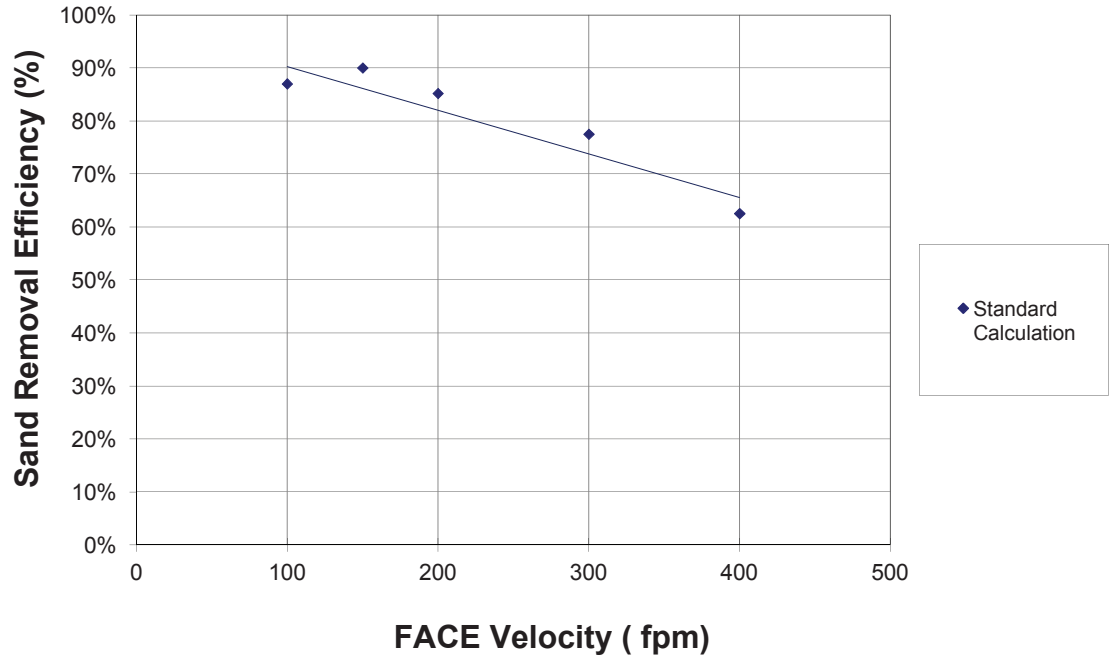
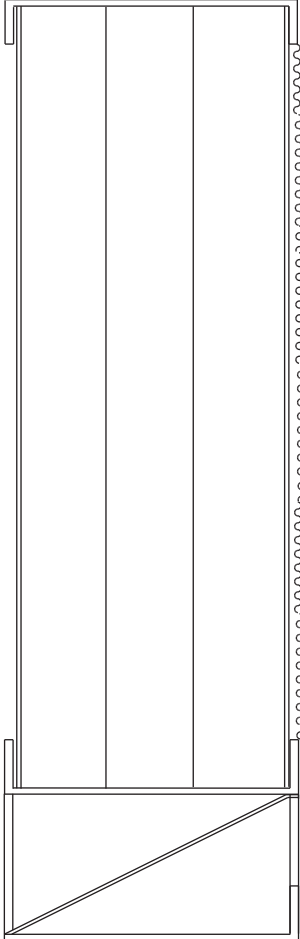
Inch	12	18	24	30	36	42	48	54	60	66	72	78	84	90	96	102	108	116	120
12	0.24	0.31	0.43	0.49	0.56	0.62	0.68	0.81	0.93	1.06	1.12	1.18	1.31	1.43	1.49	1.56	1.68	1.74	1.81
18	0.43	0.54	0.76	0.87	0.98	1.08	1.19	1.41	1.63	1.85	1.96	2.07	2.29	2.51	2.62	2.73	2.94	3.05	3.16
24	0.46	0.58	0.81	0.93	1.04	1.16	1.28	1.51	1.75	1.98	2.10	2.22	2.45	2.69	2.80	2.92	3.15	3.27	3.39
30	0.80	1.00	1.40	1.61	1.81	2.01	2.22	2.62	3.03	3.44	3.64	3.84	4.25	4.65	4.86	5.06	5.47	5.67	5.87
36	0.98	1.23	1.73	1.98	2.23	2.48	2.73	3.23	3.73	4.23	4.48	4.73	5.23	5.73	5.98	6.23	6.73	6.98	7.23
42	1.16	1.46	2.05	2.35	2.65	2.94	3.24	3.83	4.43	5.02	5.32	5.62	6.21	6.80	7.10	7.40	7.99	8.29	8.58
48	1.35	1.69	2.38	2.72	3.07	3.41	3.75	4.44	5.13	5.82	6.16	6.50	7.19	7.88	8.22	8.57	9.25	9.60	9.94
54	1.53	1.92	2.70	3.09	3.48	3.87	4.26	5.05	5.83	6.61	7.00	7.39	8.17	8.95	9.34	9.73	10.51	10.90	11.30
60	1.71	2.15	3.03	3.46	3.90	4.34	4.78	5.65	6.53	7.40	7.84	8.28	9.15	10.03	10.46	10.90	11.78	12.21	12.65
66	1.90	2.38	3.35	3.83	4.32	4.80	5.29	6.26	7.23	8.19	8.68	9.16	10.13	11.10	11.58	12.07	13.04	13.52	14.01
72	2.08	2.61	3.67	4.21	4.74	5.27	5.80	6.86	7.92	8.99	9.52	10.05	11.11	12.17	12.71	13.24	14.30	14.83	15.36
78	2.26	2.84	4.00	4.58	5.15	5.73	6.31	7.47	8.62	9.78	10.36	10.94	12.09	13.25	13.83	14.40	15.56	16.14	16.72
84	2.45	3.07	4.32	4.95	5.57	6.20	6.82	8.07	9.32	10.57	11.20	11.82	13.07	14.32	14.95	15.57	16.82	17.45	18.07
90	2.63	3.30	4.65	5.32	5.99	6.66	7.33	8.68	10.02	11.37	12.04	12.71	14.05	15.40	16.07	16.74	18.08	18.76	19.43

FREE AREA IN SQ. FT (RECESSED MOUNTING)

LOUVERS

MODEL STL & ASTL

DUST ARRESTANCE TEST REPORT



RTI LAB Report No. B01141401

Test Description A non-standard dust (150-300 μm Graded Crushed Quartz) was fed to the sand louver using standard ASHRAE 52.2 test methodology. One dust load was performed at each of the air velocities shown. The weight of dust fed, the amount of dust swept up in the duct upstream of the filter after the dust load and blow-off, the weight of dust downstream of the filter, the weight of the final filter before and after the dust load, and the pressure drop across the louver were recorded. The dust, being very large, did not all reach the filter. However, the standard arrestance calculation does not include subtracting this dust from the dust fed because it is assumed that all of the dust will reach the filter. Since it seemed needed to do this for this dust, the results are reported showing the standard calculation.

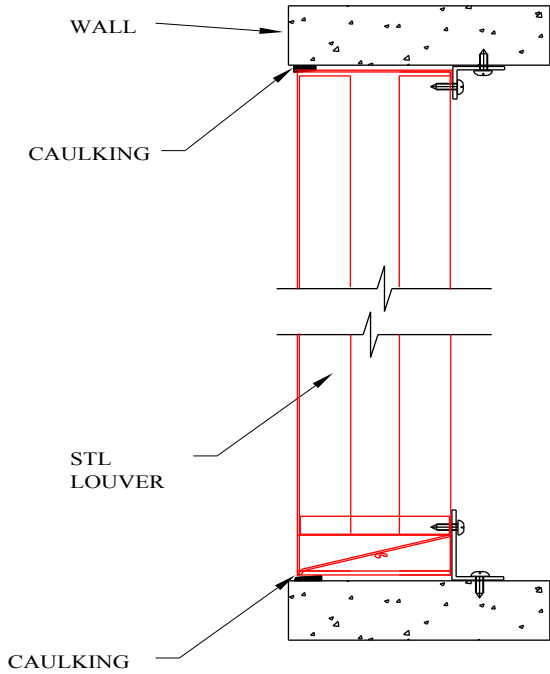
AMCA certified Rating seal does not apply to Dust Arrestance Test Report.

LOUVERS

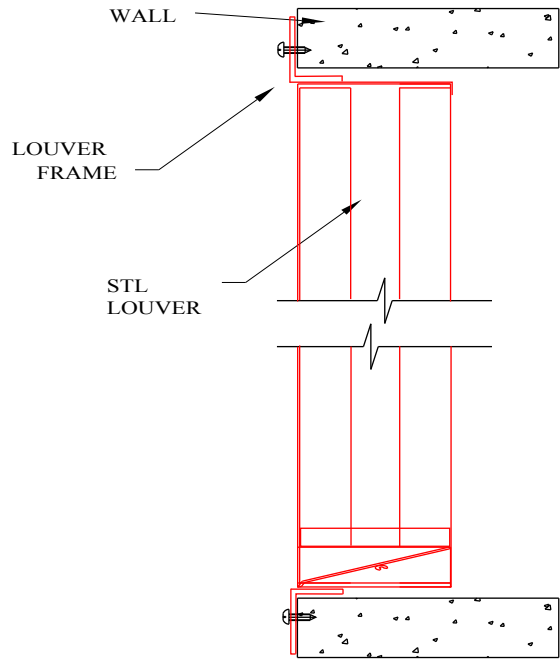
MODEL STL & ASTL

TYPICAL INSTALLATION DETAILS

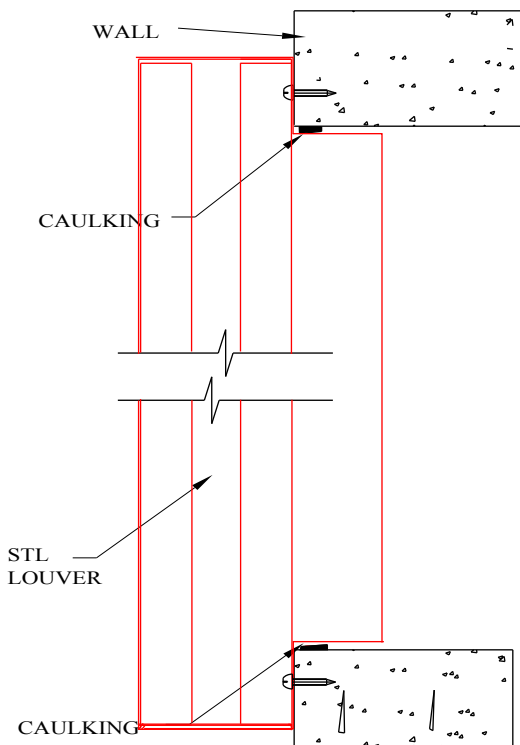
MASONRY WALL INSTALLATION



FLANGE MOUNT



MASONRY WALL INSTALLATION (EXPOSED)



METAL PANEL INSTALLATION

