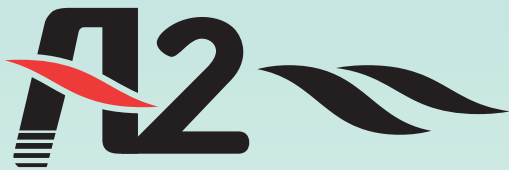


# A2 SPECIAL ONE





Taeyang Electric certifies that the BxA series shown herein is licensed to bear the AMCA Seal. The ratings shown are based on tests and procedures performed in accordance with AMCA publication 211 and AMCA publication 311 and comply with the requirements of the AMCA Certified Ratings Program.

### 기술인증



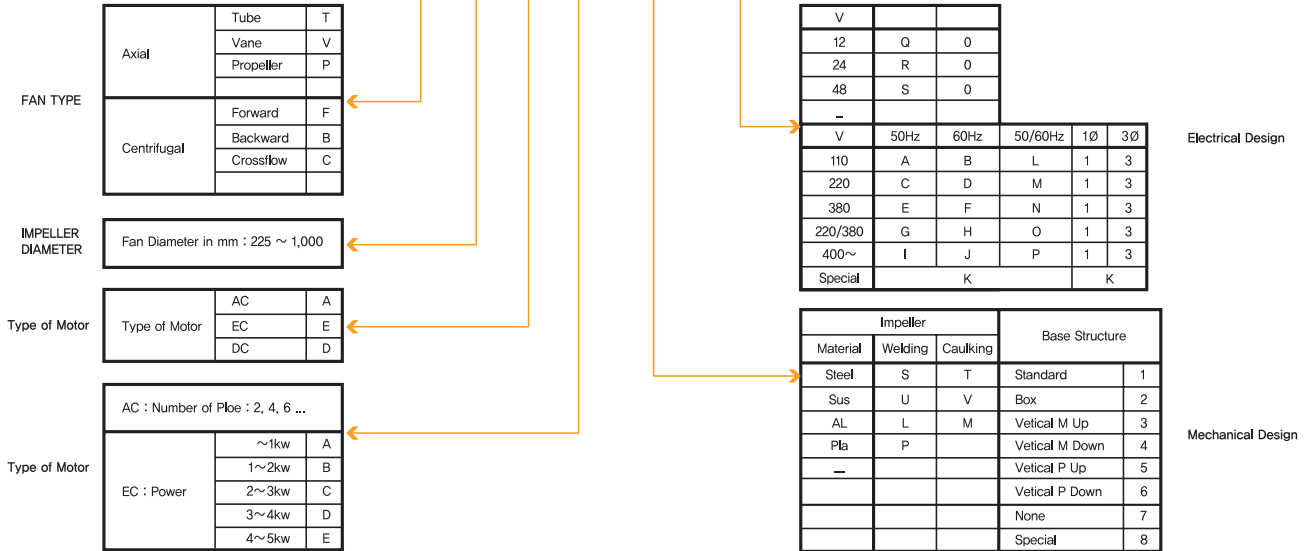
### 생산라인





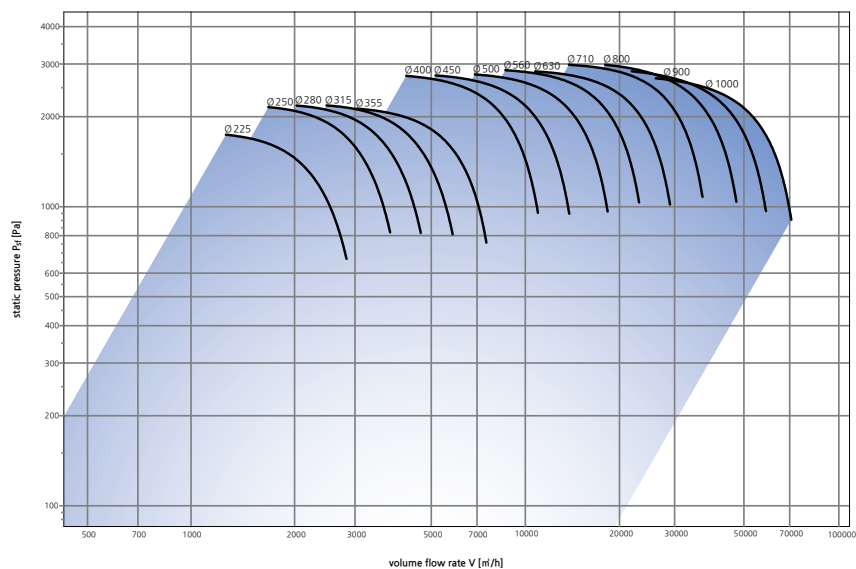
모델 코드 Model Code

EX : B 560 A 2 - S 1 F 3



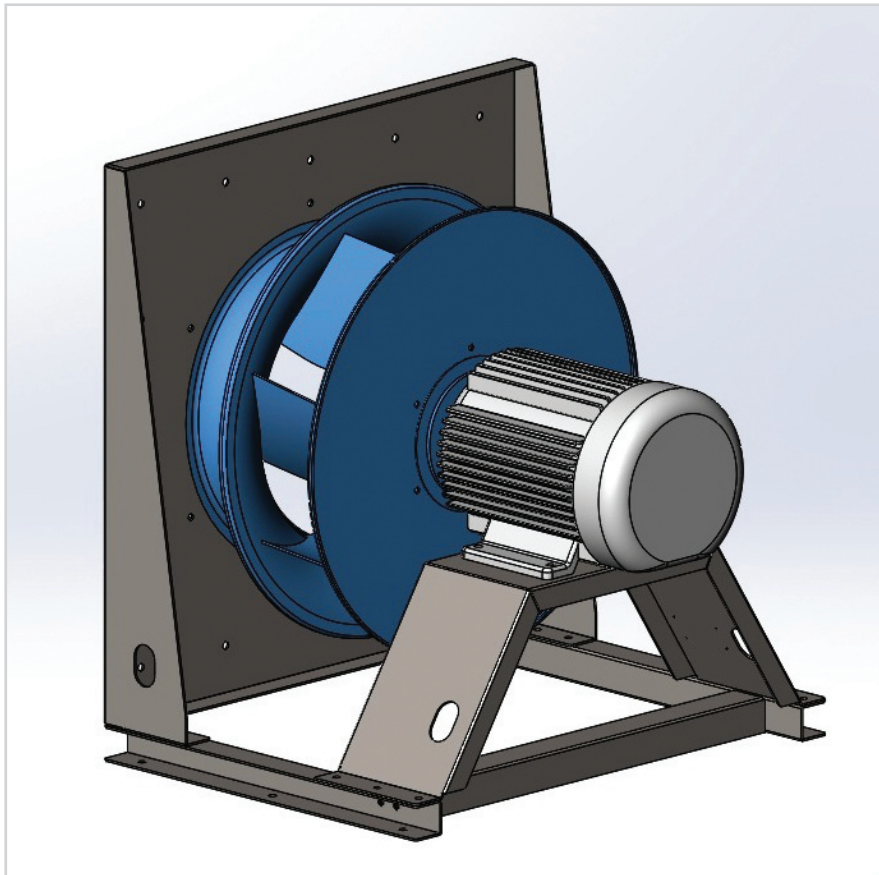
원심팬 성능곡선 AC Motor(Centrifugal fan performance)

Overview of characteristic curves : AC Centrifugal fan (~30kw)





## AC centrifugal fan

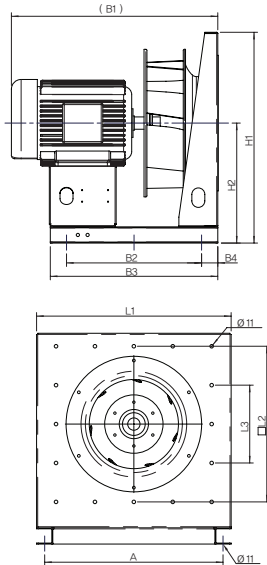


**BxA-S1**

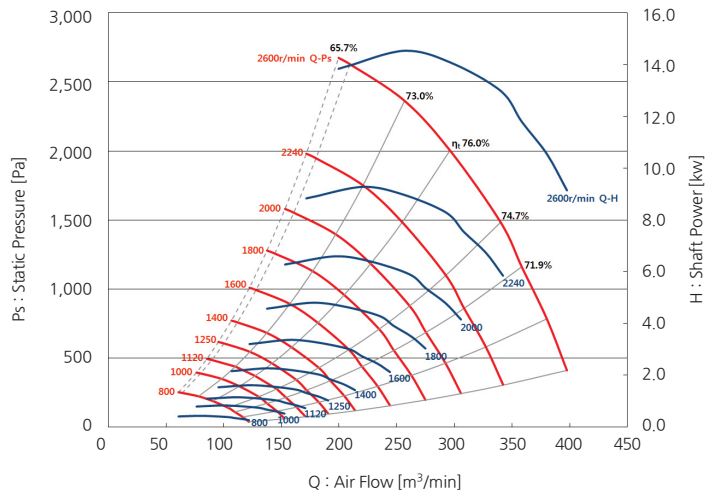
Fan material	Structure material	Power
Steel(coating Ral 9005 "CS3")	Steel(HGI)	0.4~30kw

# A2 AC centrifugal fan and modules backward curved, Ø560

## • Construction



## • Curves



(mm)

MODEL	H1	H2	B1	B2	B3	B4	A	L1	L2	L3
B 560 A4 - S1	850	450	728	508	608	50	750	800	660	330

## • Performance data

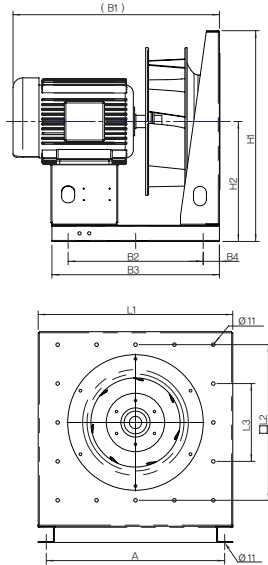
Det.	N [r/min]	Pt [Pa]	Ps [Pa]	Q [m³/min]	H [kW]	EtaT [%]	EtaS [%]	LwoA [dB]
1	800	70	39	122.0	0.266	53.9	29.8	82
2		102	74	116.6	0.307	64.9	46.8	79
3		135	109	109.8	0.343	71.9	58.4	75
4		162	140	104.1	0.377	74.7	64.3	73
5		206	188	90.6	0.409	76.0	69.6	72
6		235	222	78.5	0.421	73.0	69.0	72
1	1120	138	76	170.9	0.731	53.9	29.8	90
2		201	145	163.3	0.842	64.9	46.8	86
3		264	214	153.8	0.940	71.9	58.4	82
4		318	274	145.8	1.035	74.7	64.3	81
5		403	369	126.9	1.121	76.0	69.6	82
6		461	436	110.0	1.156	73.0	69.0	80
1	1400	215	119	213.7	1.427	53.9	29.8	95
2		314	226	204.2	1.644	64.9	46.8	91
3		413	335	192.3	1.837	71.9	58.4	88
4		498	428	182.4	2.021	74.7	64.3	86
5		630	578	158.8	2.191	76.0	69.6	86
6		721	682	137.6	2.260	73.0	69.0	86
1	1800	356	197	274.8	3.033	53.9	29.8	102
2		519	374	262.7	3.496	64.9	46.8	98
3		683	554	247.5	3.906	71.9	58.4	94
4		823	709	234.8	4.300	74.7	64.3	92
5		1043	956	204.4	4.662	76.0	69.6	92
6		1194	1129	177.1	4.809	73.0	69.0	93
1	2240	551	305	342.2	5.847	53.9	29.8	106
2		804	581	327.2	6.743	64.9	46.8	102
3		1058	860	308.4	7.536	71.9	58.4	99
4		1277	1099	292.6	8.298	74.7	64.3	97
5		1619	1484	254.9	9.000	76.0	69.6	98
6		1852	1752	220.9	9.286	73.0	69.0	98

Det.	N [r/min]	Pt [Pa]	Ps [Pa]	Q [m³/min]	H [kW]	EtaT [%]	EtaS [%]	LwoA [dB]
1	1000	110	61	152.6	0.521	53.9	29.8	88
2		160	115	145.8	0.599	64.9	46.8	84
3		210	171	137.3	0.669	71.9	58.4	80
4		254	218	130.2	0.736	74.7	64.3	78
5		321	294	113.3	0.798	76.0	69.6	78
6		368	347	98.1	0.823	73.0	69.0	78
1	1250	171	95	190.7	1.016	53.9	29.8	92
2		250	180	182.3	1.170	64.9	46.8	89
3		329	267	171.7	1.307	71.9	58.4	85
4		397	341	162.8	1.439	74.7	64.3	83
5		502	460	141.7	1.559	76.0	69.6	83
6		575	543	122.8	1.608	73.0	69.0	83
1	1600	281	156	244.2	2.130	53.9	29.8	98
2		410	296	233.4	2.455	64.9	46.8	95
3		539	438	219.9	2.742	71.9	58.4	91
4		650	560	208.6	3.019	74.7	64.3	89
5		824	755	181.6	3.272	76.0	69.6	89
6		943	891	157.3	3.375	73.0	69.0	90
1	2000	439	243	305.4	4.161	53.9	29.8	104
2		641	462	292.0	4.798	64.9	46.8	100
3		843	685	275.1	5.360	71.9	58.4	96
4		1017	876	261.0	5.902	74.7	64.3	95
5		1289	1182	227.3	6.400	76.0	69.6	95
6		1475	1395	197.0	6.602	73.0	69.0	95
1	2600	743	412	397.3	9.148	53.9	29.8	108
2		1084	783	380.0	10.552	64.9	46.8	106
3		1427	1160	358.3	11.797	71.9	58.4	102
4		1723	1483	340.1	12.993	74.7	64.3	101
5		2185	2003	296.3	14.098	76.0	69.6	102
6		2500	2365	256.9	14.549	73.0	69.0	102

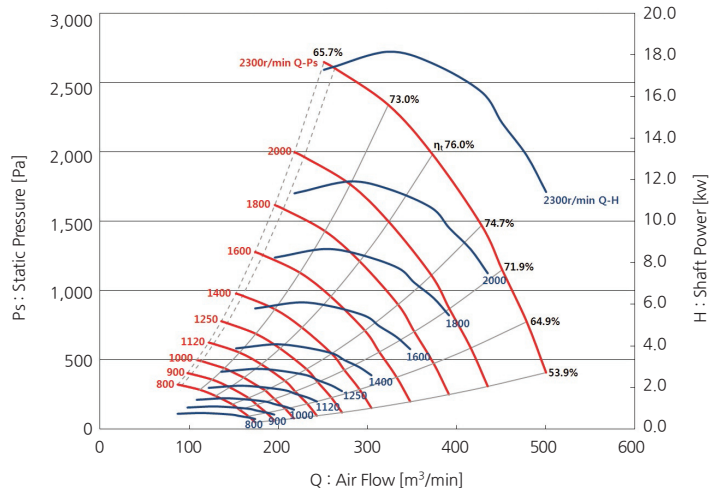
- The A-Weighted sound rating shown have been calculated per AMCA Standard 301
- Value shown are for outlet LwoA sound power levels for installation type A - free inlet, free outlet.
- Performance certified is for installation type A - free inlet, free outlet.
- Performance ratings do not include the effects of apputenances(accessories), Power rating kW does not include transmission losses.

# A2 AC centrifugal fan and modules backward curved, Ø630

## • Construction



## • Curves



(mm)

MODEL	H1	H2	B1	B2	B3	B4	A	L1	L2	L3
B 630 A4 - S1	905	505	876	618	738	60	750	800	700	350

## • Performance data

Det.	N [r/min]	Pt [Pa]	Ps [Pa]	Q [m³/min]	H [kW]	EtaT [%]	EtaS [%]	LwoA [dB]
1	800	89	49	173.8	0.480	53.9	29.8	86
2		130	93	166.0	0.553	64.9	46.8	82
3		170	138	156.4	0.617	71.9	58.4	78
4		205	177	148.3	0.679	74.7	64.3	76
5		260	238	129.0	0.736	76.0	69.6	76
6		298	281	111.8	0.759	73.0	69.0	76
1	1000	139	77	217.3	0.937	53.9	29.8	91
2		203	146	207.6	1.080	64.9	46.8	88
3		266	216	195.5	1.206	71.9	58.4	84
4		321	276	185.4	1.327	74.7	64.3	82
5		407	373	161.4	1.438	76.0	69.6	81
6		465	440	139.8	1.483	73.0	69.0	81
1	1250	217	120	271.6	1.830	53.9	29.8	96
2		317	228	259.6	2.109	64.9	46.8	92
3		416	338	244.5	2.356	71.9	58.4	89
4		502	432	231.9	2.593	74.7	64.3	87
5		636	583	201.9	2.810	76.0	69.6	87
6		728	688	174.9	2.899	73.0	69.0	87
1	1600	356	197	347.8	3.838	53.9	29.8	102
2		519	374	332.5	4.425	64.9	46.8	98
3		683	554	313.3	4.943	71.9	58.4	95
4		823	709	297.1	5.442	74.7	64.3	93
5		1043	956	258.8	5.900	76.0	69.6	93
6		1194	1129	224.2	6.087	73.0	69.0	93
1	2000	556	308	435.0	7.500	53.9	29.8	107
2		811	586	415.9	8.649	64.9	46.8	104
3		1068	867	392.0	9.666	71.9	58.4	100
4		1288	1109	372.0	10.644	74.7	64.3	98
5		1633	1497	324.0	11.544	76.0	69.6	99
6		1869	1767	280.8	11.911	73.0	69.0	99

Det.	N [r/min]	Pt [Pa]	Ps [Pa]	Q [m³/min]	H [kW]	EtaT [%]	EtaS [%]	LwoA [dB]
1	900	112	62	195.5	0.683	53.9	29.8	90
2		164	118	186.8	0.787	64.9	46.8	86
3		216	175	175.9	0.879	71.9	58.4	82
4		260	224	166.8	0.967	74.7	64.3	79
5		329	302	145.2	1.048	76.0	69.6	79
6		377	356	125.8	1.081	73.0	69.0	79
1	1120	174	96	243.4	1.317	53.9	29.8	94
2		254	183	232.5	1.517	64.9	46.8	90
3		334	271	219.0	1.694	71.9	58.4	86
4		403	347	207.7	1.865	74.7	64.3	84
5		510	468	180.8	2.021	76.0	69.6	84
6		584	552	156.6	2.084	73.0	69.0	84
1	1400	272	151	304.3	2.571	53.9	29.8	98
2		397	287	290.8	2.964	64.9	46.8	95
3		522	424	274.0	3.310	71.9	58.4	92
4		630	542	259.8	3.644	74.7	64.3	89
5		798	732	226.2	3.950	76.0	69.6	90
6		913	863	196.0	4.074	73.0	69.0	90
1	1800	450	249	391.4	5.466	53.9	29.8	105
2		657	474	374.2	6.303	64.9	46.8	102
3		864	702	352.6	7.042	71.9	58.4	98
4		1043	898	334.5	7.754	74.7	64.3	96
5		1322	1212	291.4	8.408	76.0	69.6	96
6		1512	1430	252.5	8.674	73.0	69.0	96
1	2300	735	408	500.5	11.411	53.9	29.8	110
2		1074	775	478.7	13.163	64.9	46.8	107
3		1413	1149	451.3	14.715	71.9	58.4	103
4		1706	1469	428.3	16.208	74.7	64.3	101
5		2163	1984	373.2	17.585	76.0	69.6	102
6		2476	2342	323.5	18.148	73.0	69.0	103

- The A-Weighted sound rating shown have been calculated per AMCA Standard 301.
- Value shown are for inlet LwoA sound power levels for installation type A - free inlet, free outlet.
- Performance certified is for installation type A - free inlet, free outlet.
- Performance ratings do not include the effects of apputenances(accessories), Power rating Kw does not include transmission losses.

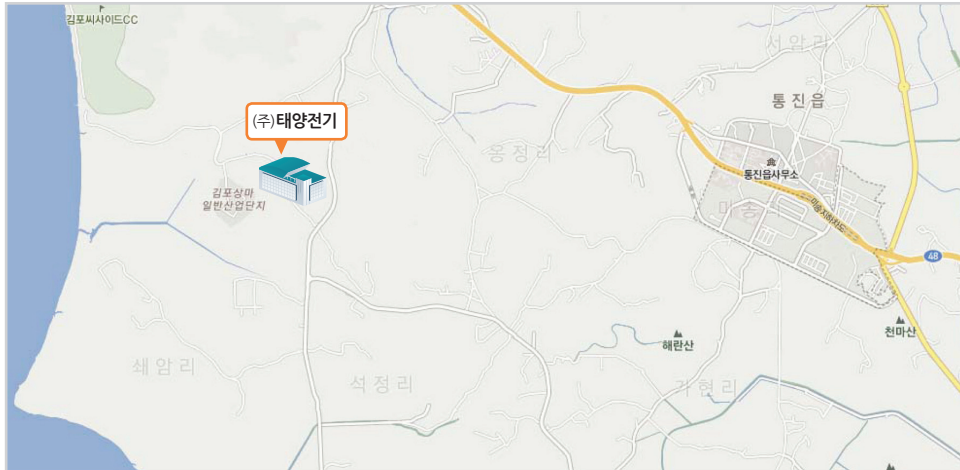


## \* 찾아오시는 길

본사 : 경기도 김포시 월곶면 고양로 115번길 180

TEL : 031-997-9661 FAX : 031-997-9665

## \* 위치



## \* 공장 전경





## (주) 태양전기

본사: 경기도 김포시 월곶면 고양로 115번길 180  
TEL 031) 8048-1010 FAX 031) 8048-1029

공장: 경북 경주시 천북면 천북산단로 1길 73-11  
TEL 054) 776-9661 FAX 054) 776-9665

[www.taeyange.com](http://www.taeyange.com)

INNOBIZ  
기술혁신형중소기업

