

MUB (A)/T Kitchen Cabinet Fan

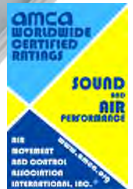
Features

- Motor outside of the air stream.
- Low sound level.
- Maintenance-free and reliable.

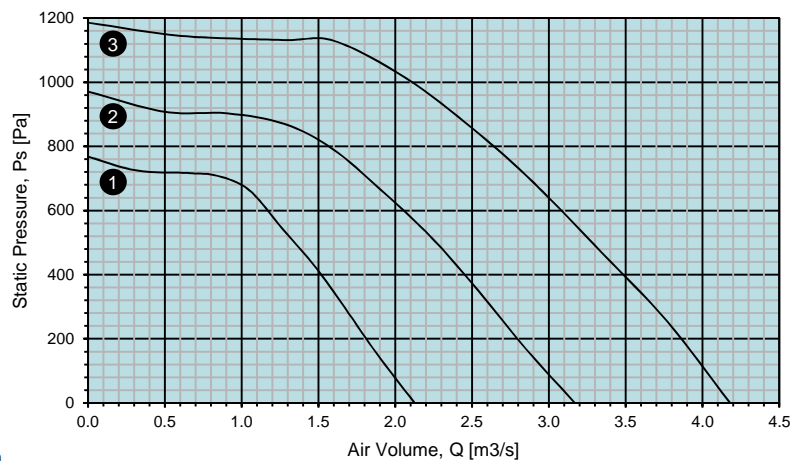
All MUB(A)/T fans have impellers with backward curved blades, manufactured from Galvanised Iron, and IEC standard motors for all 415V three phase motors. Motors are outside the air stream.

The casing consists of an aluminium frame with fiberglass reinforced plastic / aluminium corners and double skin, galvanised steel panels with a 20mm mineral wool insulation. Panels are removable, allowing flexible ventilation solutions.

The MUB(A)/T bottom panel is shaped as a grease tray and incorporates a premounted drain plug.



Performance curves



- ① MUB(A)/T 042 500D4
- ② MUB(A)/T 062 560D4
- ③ MUB(A)/T 062 630D4

Technical data

| MUB(A)/T | | 042 500D4 | 062 560D4 | 062 630D4 |
|--|--------|-----------|-----------|-----------|
| Voltage | V | 415 | 415 | 415 |
| Frequency | Hz | 50 | 50 | 50 |
| Phase | - | 3 | 3 | 3 |
| Maximum Motor Input Power | W | 1500 | 3000 | 4270 |
| Current | A | 3.5 | 6.4 | 7.8 |
| Max. airflow | m³/h | 7653 | 11408 | 15044 |
| Fan impeller speed | r.p.m. | 1460 | 1467 | 1445 |
| Max. temperature of transported air | °C | 100 | 100 | 100 |
| Sound pressure level at 3m (20m³ Sabine) | dB(A) | 56 | 57 | 69 |
| Weight | kg | 73 | 135 | 137 |
| Insulation class | | F | F | F |
| Enclosure class, motor | IP | IP 55 | IP 55 | IP 55 |

* Performance certified is for installation type D – Ducted inlet, Ducted outlet.* Speed (RPM) shown is nominal. Performance is based on actual speed of test.

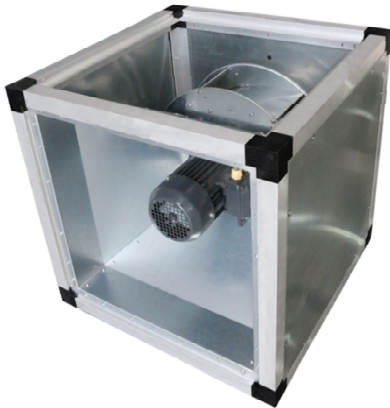
* Performance ratings do not include the effects of appurtenances (accessories). * Sound pressure level at 3m (20m³ Sabine) are not licensed by AMCA International.

Sound data

| Model | 63 | 125 | 250 | 500 | 1k | 2k | 4k | 8k |
|-----------|-----|-----|-----|-----|----|----|----|----|
| 042 500D4 | 91 | 97 | 87 | 80 | 76 | 73 | 72 | 67 |
| 062 560D4 | 99 | 97 | 89 | 81 | 79 | 78 | 82 | 77 |
| 062 630D4 | 101 | 100 | 94 | 84 | 83 | 81 | 79 | 75 |

Following is the inlet Lwi sound power levels (dB) in eight octave bands at maximum airflow (0Pa)

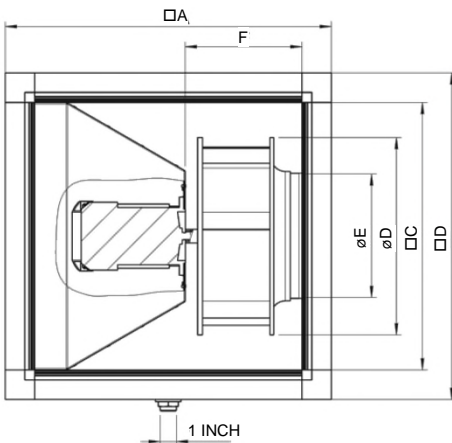
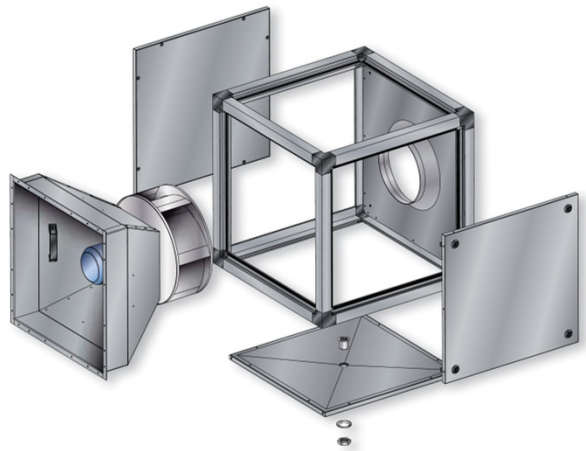
- The sound power level ratings shown are in decibels, referred to 10⁻¹² watts, calculated per AMCA International Standard 301. Values shown are for inlet Lwi sound power levels for installation type D : ducted inlet, ducted outlet. Ratings include the effects of duct end correction.



- Temperature of transported air up to 100°C.
- Multifunctional use for example for kitchen exhaust.
- Easy to maintain.
- Airflow direction can be modified on site.
- Sizes from 500 to 630.
- Air flow up to 15,000 m³/h.



Drain
Grease and condensate tray, insulated double skin panel with 1" drain plug as standard.



Dimensions

| MUB(A)/T | □A | □B | □C | øD | E | F | In metric |
|-------------|-----|-----|-----|-----|-----|-----|-----------|
| MUB 042 500 | 670 | 670 | 548 | 504 | 321 | 300 | |
| MUB 062 560 | 800 | 800 | 718 | 570 | 361 | 321 | |
| MUB 062 630 | 800 | 800 | 718 | 635 | 407 | 321 | |



Systemair Sdn Bhd certifies that the MUB(A) / T Kitchen Cabinet Fan shown herein are licensed to bear the AMCA Seal. The ratings shown are based on tests and procedures performed in accordance with AMCA Publication 211 and AMCA Publication 311 and comply with the requirements of the AMCA Certified Ratings Program.