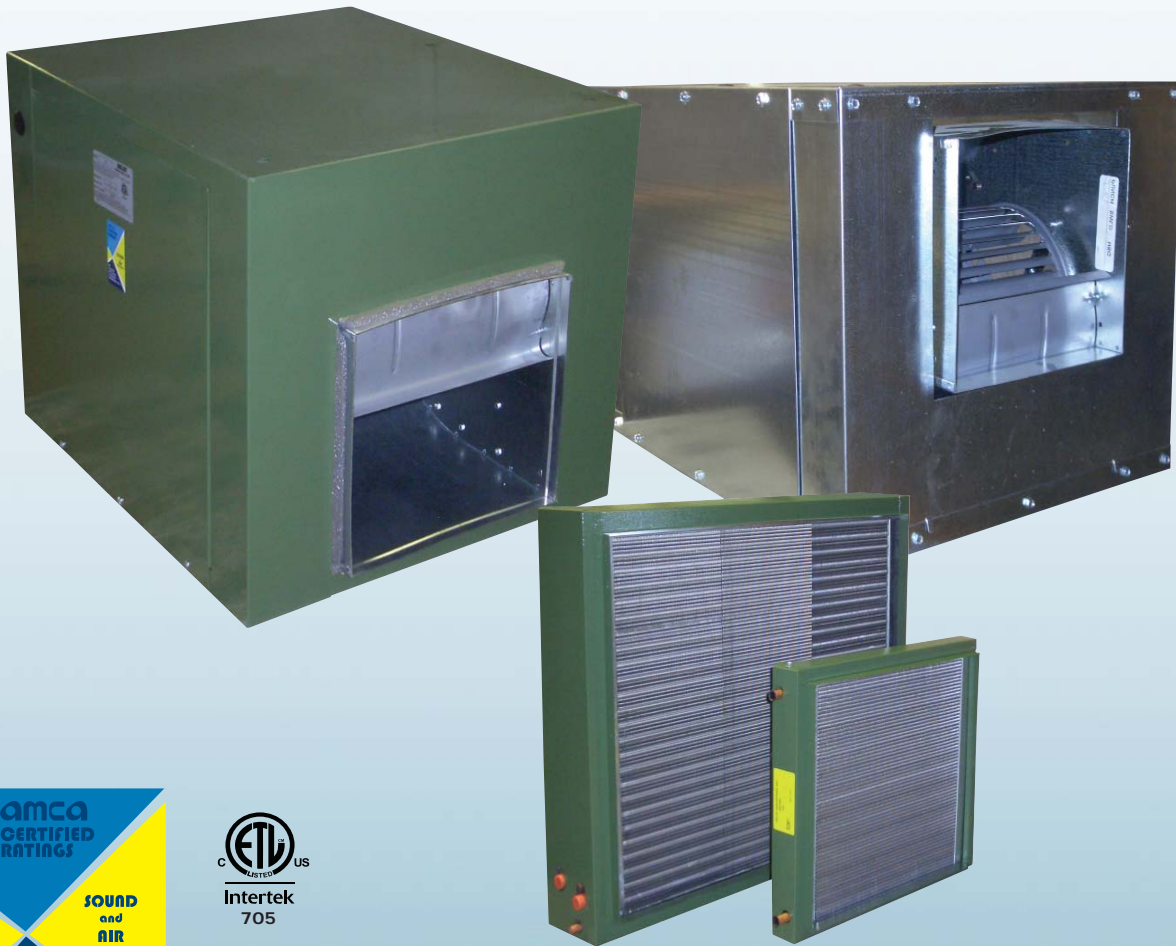




Forward Curve Inline Duct Blowers

IDB, 200, 9200 and Heating/Cooling Coils Series



Canarm certifies that the IDB, 200, 200-2, 9200, and 9200-2 models shown herein are licensed to bear the AMCA Seal.

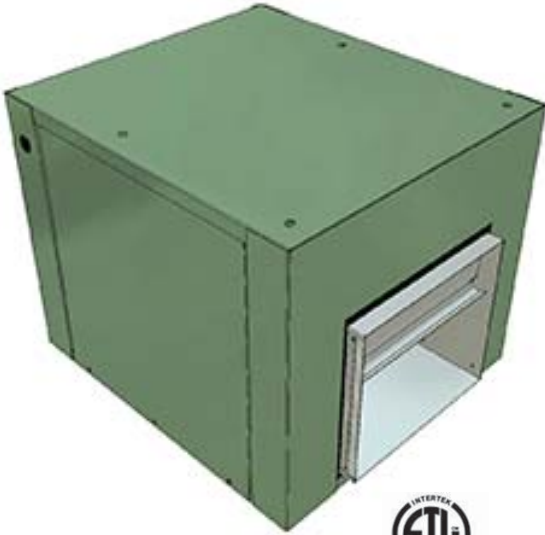
The ratings shown are based on tests and procedures performed in accordance with AMCA Publications 211 & 311 and comply with the requirements of the AMCA Certified Ratings Programme.

CANARM... PROVIDING CUSTOMERS WITH VALUE, KNOWLEDGE AND QUALITY PRODUCTS

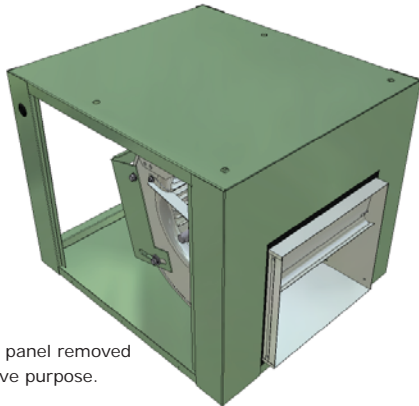


200 Series

Single & Twin Inline Duct Blowers



200 Series
Indoor Applications
Insulated or Non-Insulated



Side access panel removed
for illustrative purpose.

Features

- An economical and efficient all purpose inline duct blower for indoor use with heating, cooling and ventilating systems
- Quiet forward curved blowers operate at low RPM
- Attractive green baked enamel paint finish
- Motor receives the cooling benefits of being in the air stream for increased motor life
- 9/16" mounting holes are provided in the top of the cabinet and through channels reinforcing the top panel
- Heavy duty ball bearings suitable for -65° F to +250° F
- Access panels for convenient motor and drive installation and servicing from either side
- All models have keywayed shafts on both ends for CW or CCW drive
- Platform motor mounting allows models 207 to 218, single and twin units, to be used in up-flow, down-flow and horizontal discharge positions
- All twin units use a common shaft for balanced air supply by each blower
- All twin unit cabinets are secured together with angle iron rails, which extend beyond the cabinet for suspension mounting

Optional Accessories

- F200A filter sections are insulated and supplied with 1" framed aluminum mesh filter. All filter tracks will accommodate either 1" or 2" filters. Easily removed for servicing through end access panel
- External vibration isolators
- 1/2" internal fiberglass insulation to overcome condensation on cabinet when used in cooling applications
- Coils - See details page 6
 - HC Hot Water Coil
 - CW Chilled Water Cooling Coil
 - DX Cooling Coil



IDB SERIES IN-LINE DUCT BLOWERS

FORWARD CURVED INLINE DUCT BLOWERS



Features

- **Wheel Diameters:** 7" through 20"
- **CFM:** Approximately 500 to 12,500 CFM in a single blower.
- Constructed from galvanized steel for durability.
- Forward Curved blowers operate at low RPM for low noise levels.
- Heavy duty ball bearings suitable for -65° F to +250° F.
- Keywayed shafts both ends for clockwise or counter rotation.
- Saddle type motor mounting platform provides extended belt tension adjustment range on all models.

IDB Series

Indoor Applications, Non-Insulated



General Information

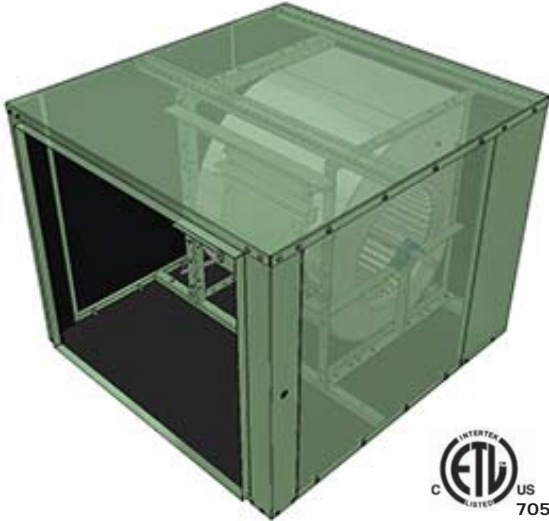
- Use as part of an HVAC system.
- Durable galvanized, steel construction.
- Delhi blowers will not "surge", "hunt" or "stall".
- Ideal for indoor applications.
- The variable pitch motor pulley permits field adjustment (typically + or - 15%) to match air delivery needs.
- Quiet forward curved blowers operate at ½ the rpm of other inline solutions.

NOTE: For insulated or heavy duty applications, please reference our 200 and 9200 series literature.

Typical Applications for our Inline Blowers

- An Inline make-up air solution for cases where a rooftop curb mounted solution is not available.
- As an air moving module for systems built up with other components such as heating/cooling coils.
- Noise sensitive areas - the low rpm forward curved wheel typically radiates less vibration than higher rpm backward inclined wheel solutions.
- When the application requires an air mover in a duct system located in a ceiling space.
- Redistribution or recirculation of air in a work space.
- Interlocked with entry doors to prevent entry of cold outdoor air into retail sales space and thus greets customers with warmth.
- Bathroom/ rest room exhaust - one duct blower serving multiple intakes.

9200 Series
Single & Twin Inline Duct Blowers



9200 Series
Heavy Duty, Insulated
Indoor or Outdoor Applications

Optional Accessories

- F200A and F9220A filter sections are insulated and supplied with 1" framed aluminum mesh filters. All filter sections will accommodate either 1" or 2" filters. Easily removed for servicing through end access panel
- Factory installed vibration Isolation - Add VIB suffix (not available in twinned configuration)
- H9209 to H9218 filtered intake hood sections supplied with 1" aluminum mesh filters. H9220 hood section has a screened inlet for use with F9220A filter section. (Note: Twin units require 2 filter sections or 2 hood sections)
- Heating & cooling coils- See page 6
- External vibration isolators



9200 Series
shown with
Optional
Intake
Hood



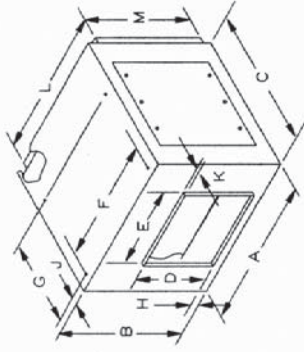
9200-VIB Series
with Internal Spring
Vibration Isolation
(Not available in twinned configuration)

Features

- All purpose heavy duty blower with weather resistant insulated cabinet for indoor and outdoor installation
- Quiet FC blowers operate at low RPM
- Attractive green corrosion resistant high solids enamel paint finish on zinc coated outer panels
- 1/2" fiberglass insulation to reduce cabinet condensation and energy costs
- Access panels for convenient motor and drive installation and servicing from either side
- Motor mounting hardware as required:
 - Motor mounting platform for 9209 and 9210.
 - 1-5 HP base mount motor plate for 9212,9215, 9212-VIB and 9215-VIB
 - 1-15 HP motor platform for 9218
 - Specify 1-15 HP or 20-50 HP motor platform for model 9220
- Heavy duty ball bearings suitable for -65° F to +250° F
- Spider bearing bracket for models 9209 to 9215
- Pillow block bearings for models 9218 and 9220
- All models have keywayed shafts both ends for CW or CCW drive
- Reinforcing angle frame (upper illustration) is standard on all models except 9209 and 9210
- Twin models 9212-2, 9215-2 and 9218-2 are tied together with angle iron runners. Blowers are driven by a common shaft for a balanced air supply by each blower
- Blower is mounted on 2 steel reinforcing channels which also contain the mounting holes for suspension installations



Structural steel angle twinning rail, top and bottom with 5/8" mounting holes on "G" & "S" dimension centers.

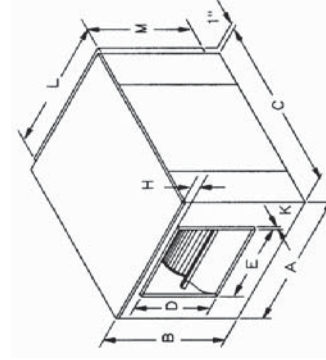


IDB, 200, 200-2, 9200 & 9200-2 Dimensions

Unit Wt. (lbs.)

MODEL	A	A2	B	C	D	E	F	G	H	J	K	L	M	R	S	T	Single	Twin
IDB07 & 207 & 207-2	18	36	15-3/8	23	8-1/4	9-3/16	14-1/2	9-5/8	1-1/4	1-1/4	7/8	15-7/8	13-3/8	8-13/16	38-1/4	2	43	112
IDB09 & 209 & 209-2	21	42	18	23	10-1/4	11-13/16	17-1/2	11-3/4	1-1/4	1-3/4	7/8	19	16	9-3/16	44-1/4	2	55	142
IDB10 & 210 & 210-2	22-1/4	44-1/2	20	24-3/4	11-3/8	13-1/8	18-3/4	13-3/8	1-1/4	1-3/4	7/8	20-1/4	18	9-1/8	46-3/4	2	65	152
IDB12 & 212 & 212-2	27	54	23	27-1/2	13-7/16	15-5/8	23-1/2	16-1/8	1-1/4	1-3/4	7/8	25	21	11-3/8	56-1/4	2	82	191
IDB15 & 215 & 215-2	33-1/2	67	28	32	15-7/8	18-5/8	28	19-1/2	2-5/8	1-3/4	7/8	30-1/2	25	14-7/8	69-1/4	3	140	287
IDB18 & 218	41-1/2	--	34	44	19-5/8	22-5/8	35	24	2-3/4	1-3/4	1-1/8	35-3/8	31-5/8	--	--	--	158	--

1-1/8" bolted flange on 9220-2 only



Note: Dimensions also applicable to 9200-VIB series with internal vibration isolation (not available in twinned configuration)

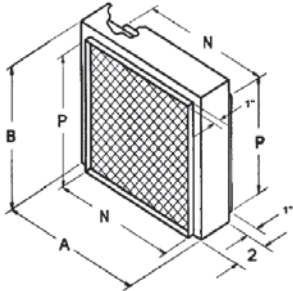
2 X 2 X 3/16" twinning support rails 9212-2, 9215-2 & 9218-2 only.

Unit Wt. (lbs.)

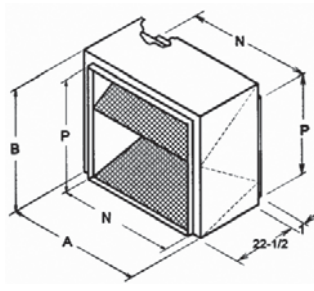
MODEL	A	A2	B	C	D	E	H	K	L	M	R	T	Single	Twin
9209 & 9209-2	21	42	18	23	11-1/4	12-3/4	1	1-1/8	19	16	9-1/4	2	61	140
9210 & 9210-2	22-1/4	44-1/2	20	24-3/4	12-3/8	14-1/8	1	1-1/8	20-1/4	18	9-1/8	2	70	165
9212 & 9212-2	30-1/8	60-1/8	24-3/4	34	14-1/2	16-5/8	2-1/8	1-1/8	25-1/8	21-1/8	13-1/4	4-3/4	143	334
9215 & 9215-2	33-3/4	67-5/8	28-5/8	38-1/8	17	19-5/8	2-1/8	1-1/8	30-5/8	25-1/4	14-1/8	2-7/8	176	403
9218 & 9218-2	41-1/2	83-3/8	34	44	19-5/8	22-5/8	2-3/4	1-1/8	35-3/8	31-5/8	19	6-1/4	323	666
9220 & 9220-2	44-3/4	89-1/2	41-1/8	57-1/2	25-3/4	25-3/4	3	1-1/8	38-3/8	35-1/8	19	6-1/8	515	1048

Filter Sections & Intake Hoods

Series F200A & F9220A

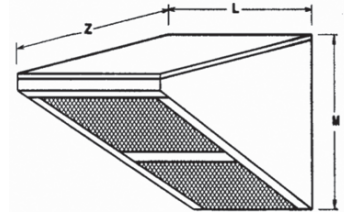


F200A
Filter Section
For 200 & 9200 Series
Duct Blowers



F9220A
Filter Section
For Model 9220
Duct Blower

Series H9200



H9200
Intake Hood
For 9200 Series
Duct Blowers

Dimensions (inches)

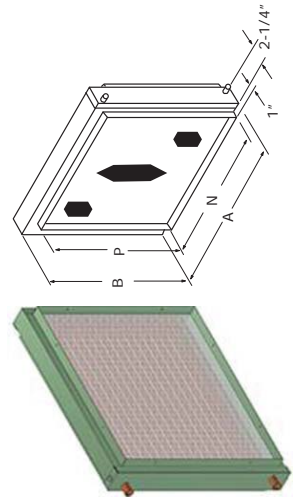
Model	A	B	N	P	Filter Size	(Qty)	Unit Wt. (Lbs.)	Model	L	M	Z	Filter Size	(Qty)	Unit Wt. (Lbs.)
F207A	17-3/4	15-3/8	16	13-1/2	14-1/8 x 16-5/8	(1)	11	N/A	--	--	--	--	--	--
F209A	21	18	19-1/8	16-1/8	16-3/4 x 19-7/8	(1)	12	H9209	19-1/4	16-9/16	21-1/4	16 x 24	(1)	14
F210A	22-1/4	20	20-3/8	18-1/8	18-3/4 x 21-1/8	(1)	14	H9210	20-1/2	18-9/16	25-3/4	15 x 20	(2)	16
F212A	27	23	25-1/8	21-1/8	21-3/4 x 25-7/8	(1)	16	H9212	25-3/8	21-9/16	30-3/4	20 x 25 & 16 x 25	(2)	27
F215A	32-1/2	26-3/4	30-5/8	25-1/8	25-3/4 x 31	(1)	21	H9215	31-3/16	25-13/16	33-1/2	20 x 28-1/2	(2)	38
F218A	37	33-1/4	35-1/4	31-1/2	32-1/4 x 35-7/8	(1)	46	H9218	35-5/8	32-11/16	40-1/4	20 x 25 (2) & 16 x 25	(2)	50
F9220A	39-3/4	37-1/4	38-1/2	35-1/4	20 x 25	(6)	64	H9220	38-5/8	35-9/16	22	Filters not included - Use F9220A		40

CFM	Filter Section							Hood Section				
	F207A	F209A	F210A	F212A	F215A	F218A	F9220A	H9209	H9210	H9212	H9215	H9218
300	.010	.007						.013				
400	.018	.010						.018				
600	.030	.020	.013					.030	.018			
800	.067	.026	.022	.012				.043	.025	.015		
1000	.117	.042	.028	.020				.065	.034	.019		
1200	.171	.073	.041	.023	.012			.093	.043	.023	.017	
1300		.091	.053	.025	.015			.107	.049	.027	.019	
1400		.109	.067	.029	.018			.122	.055	.030	.020	
1600		.145	.095	.038	.021	.011			.072	.035	.025	.015
1800		.182	.124	.054	.024	.013			.091	.042	.030	.017
2000			.154	.073	.026	.017			.109	.048	.034	.019
2500				.126	.042	.023				.073	.045	.025
3000				.182	.073	.028				.103	.061	.032
3500					.110	.040				.131	.082	.040
4000					.147	.057	.023				.107	.048
4500					.182	.082	.027				.130	.059
5000						.107	.032					.072
5500						.132	.036					.088
6000						.157	.040					.103
6500						.182	.046					.117
7000							.052					.131
7500							.058					
8000							.065					
8500							.074					
9000							.082					
10000							.101					
11000							.118					
12000							.137					
Maximum CFM												
	1250	1800	2200	3500	4500	6700	12000	1450	2200	3500	4500	7000

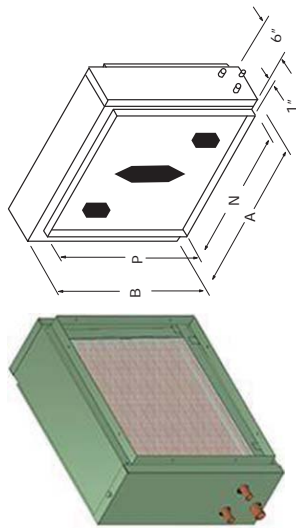


'HC', 'CW' & 'DX' Series Heating & Cooling Coils

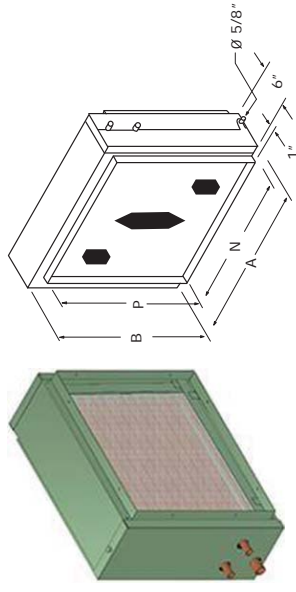
HC Series
Hot Water Heating Coils



CW Series
Chilled Water Cooling Coils
With Built-in Condensate Pan



DX Series
Direct Expansion Coils
With Built-in Condensate Pan



Note: DX coil is supplied with low pressure drop venturi type distributor for use with customer supplied expansion device.

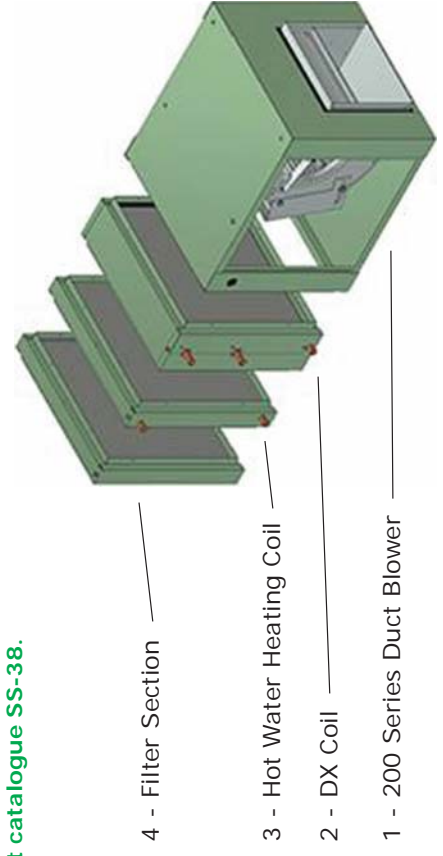
Dimensions (in)	HC-CW - DX Coils			HC Coils		CW Coils		DX Coils		
	A (HC)	A (CW & DX)	B	P	INLET	OUTLET	INLET	OUTLET	INLET	OUTLET
HC-07 & CW-07 & DX-18-07	17-3/4	17-3/4	15-3/8	16	13-1/2	5/8	5/8	5/8	1/2	5/8
HC-09 & CW-09 & DX-24-09	21	21	18	19-1/8	16-1/8	5/8	5/8	7/8	1/2	5/8
HC-10 & CW-10 & DX-30/36-10	22-1/4	22-1/4	20	20-3/8	18-1/8	5/8	5/8	7/8	1/2	5/8
HC-12 & CW-12 & DX-42/48-12	27	27	23	25-1/8	21-1/8	3/4	3/4	7/8	1/2	7/8
HC-15 & CW-15 & DX-60-15	32-1/2	33-1/2	26-3/4	30-5/8	25-1/8	3/4	3/4	7/8	5/8	7/8
										Drain is 5/8 in-OD

For complete details and capacities on HC, CW & DX Coils request catalogue SS-38.

Features

- All coils are sized to mount to the inlet of the corresponding sized duct blower or coil and filter section as illustrated in the modular set up illustrated.

- Example:
- 1 - 210 Duct Blower,
 - 2 - DX30/36-10 Cooling Coil,
 - 3 - HC-10 Hot Water Coil
 - 4 - F210 Filter Section

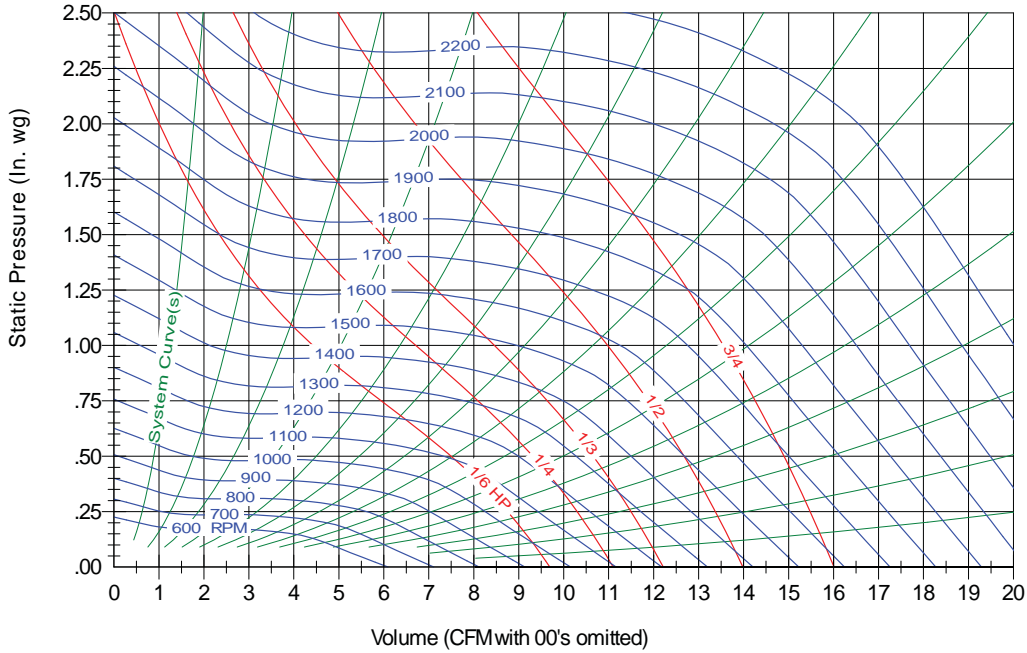


- 4 - Filter Section
- 3 - Hot Water Heating Coil
- 2 - DX Coil
- 1 - 200 Series Duct Blower



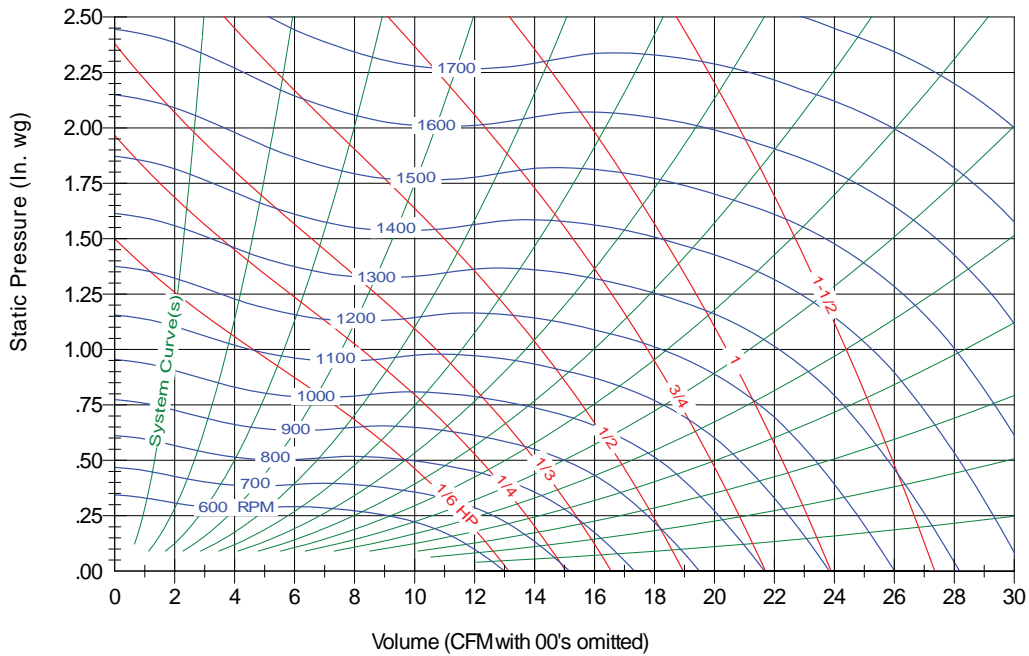
IDB07 & 207

Max. 3/4 HP, 145T Frame
 3/4" Shaft Wheel Dia, 7.75" Tip Speed: 2.03 X RPM = FPM



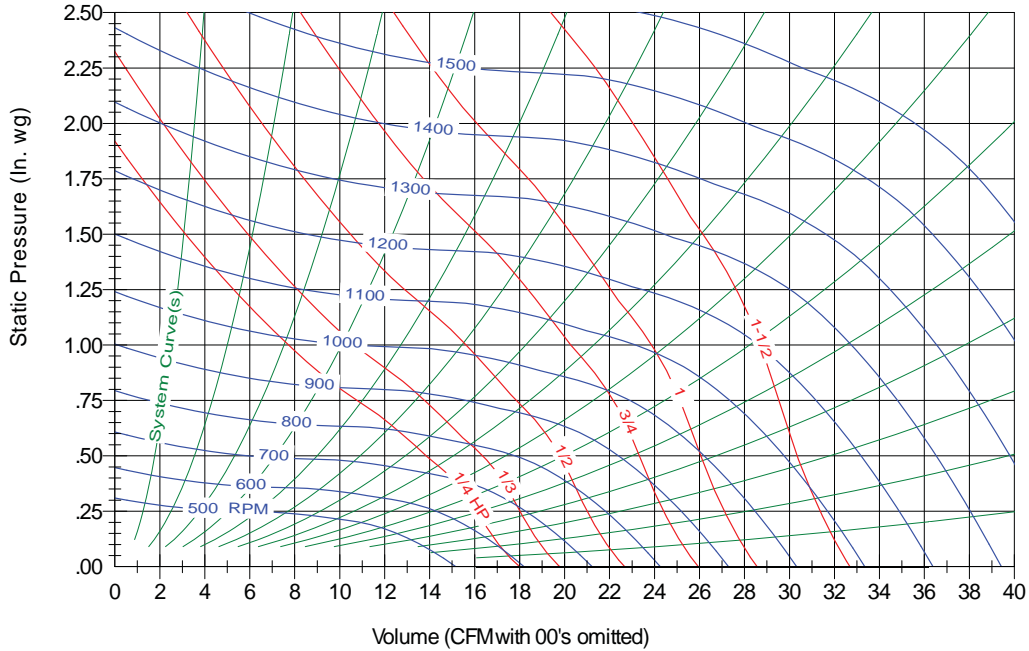
IDB09 & 209 & 9209

IDB09, 209 -Max. 3/4 HP, 145T Frame
 9209 -Max. 1-1/2 HP, 145T Frame
 3/4" Shaft Wheel Dia, 10.13" Tip Speed: 2.65 X RPM = FPM

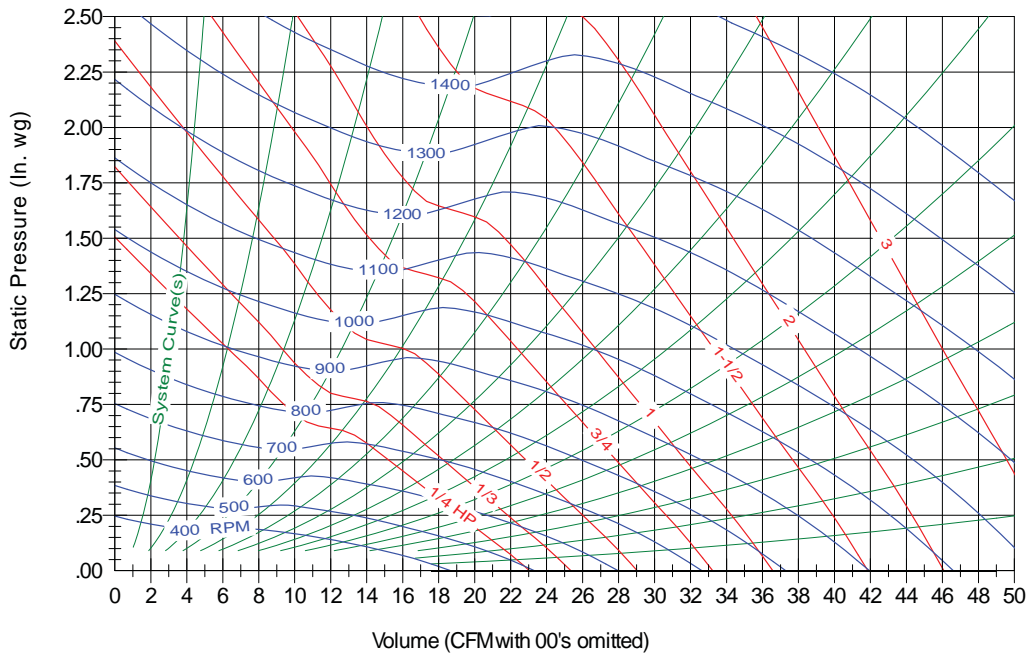


Performance certified is for installation Type B - Free inlet, Ducted outlet. Power rating bhp does not include transmission losses. Performance ratings do not include the effects of appurtenances (accessories). The sound ratings shown are loudness values in fan sones at 5 ft. (1.5m) in a hemispherical free field calculated per AMCA Standard 301. Values shown are for Installation Type B: free inlet hemispherical fan sone levels. Sone values not documented in unlisted areas. Twin unit data is derived from tests of single width fans.

IDB10 & 210 & 9210 Max. 1/2 HP, 145T Frame 3/4" Shaft Wheel Dia, 11.44" Tip Speed: 2.99 X RPM = FPM



IDB12 & 212 & 9212 IDB12, 212 - Max. 1-1/2HP, 145T Frame 3/4" Shaft
9212 - Max. 3 HP, 145T Frame 1" Shaft
Wheel Dia, 12.50" Tip Speed: 3.27 X RPM = FPM

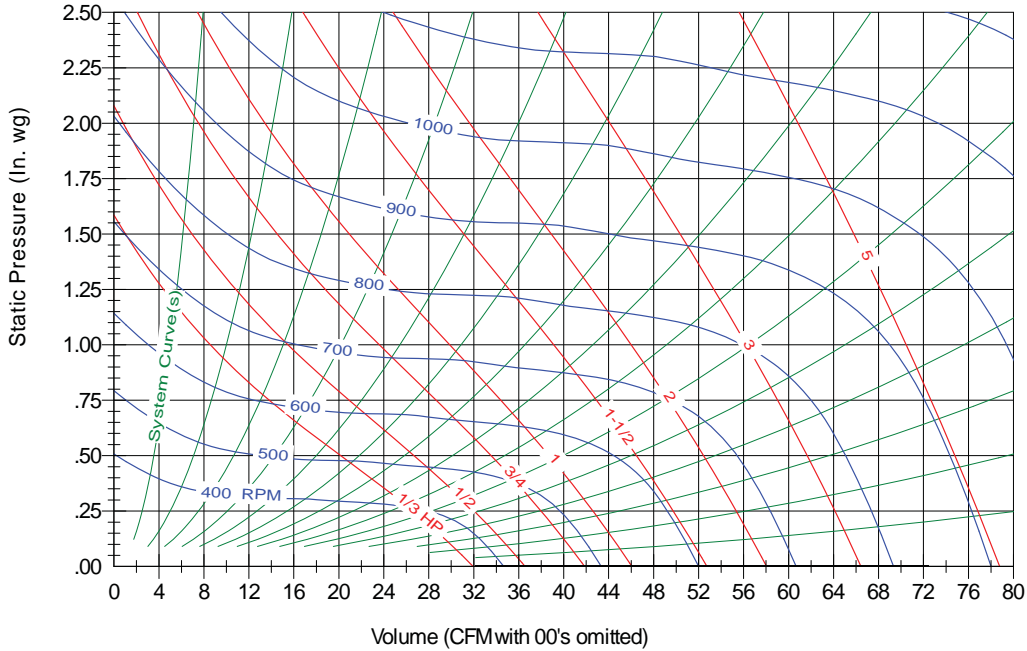


Performance certified is for installation Type B - Free inlet, Ducted outlet. Power rating bhp does not include transmission losses. Performance ratings do not include the effects of appurtenances (accessories). The sound ratings shown are loudness values in fan sones at 5 ft. (1.5m) in a hemispherical free field calculated per AMCA Standard 301. Values shown are for Installation Type B: free inlet hemispherical fan sone levels. Some values not documented in unlisted areas. Twin unit data is derived from tests of single width fans.



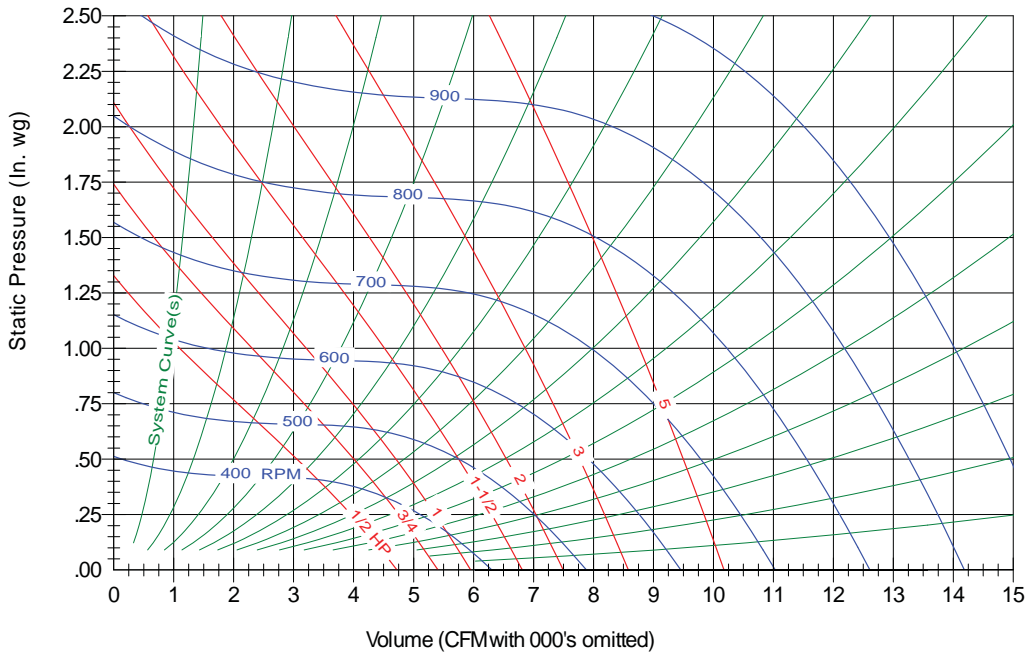
IDB15, 215 - Max. 3 HP, 184T Frame 1" Shaft
 9215 - Max. 5 HP, 184T Frame 1" Shaft
 Wheel Dia, 15.25" Tip Speed: 3.99 X RPM = FPM

IDB15 & 215 & 9215



IDB18, 218 - Max. 5 HP, 184T Frame 1" Shaft
 9218 - Max. 5 HP, 256T Frame 1" Shaft
 Wheel Dia, 18.19" Tip Speed: 4.76 X RPM = FPM

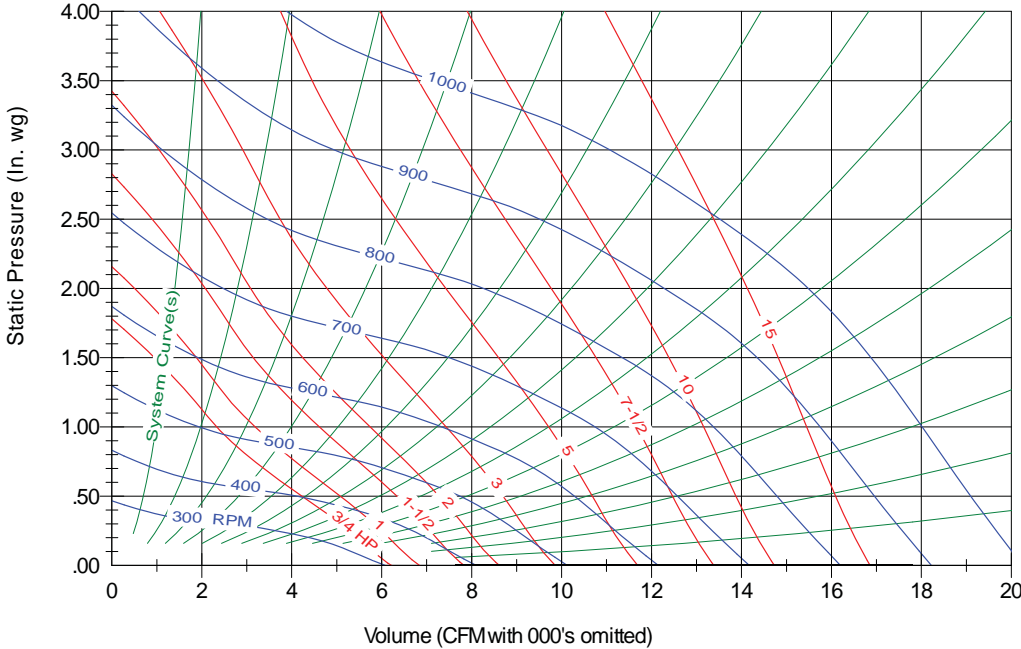
IDB18 & 218 & 9218



Performance certified is for installation Type B - Free inlet, Ducted outlet. Power rating bhp does not include transmission losses. Performance ratings do not include the effects of appurtenances (accessories). The sound ratings shown are loudness values in fan sones at 5 ft. (1.5m) in a hemispherical free field calculated per AMCA Standard 301. Values shown are for Installation Type B: free inlet hemispherical fan sone levels. Sone values not documented in unlisted areas. Twin unit data is derived from tests of single width fans.

9220

9220 - Max. 15 HP, 256T Frame 1-716" Shaft
Wheel Dia, 20.44" Tip Speed: 5.35 X RPM = FPM



Performance certified is for installation Type B - Free inlet, Ducted outlet. Power rating bhp does not include transmission losses.
Performance ratings do not include the effects of appurtenances (accessories). The sound ratings shown are loudness values in fan sones at 5 ft. (1.5m) in a hemispherical free field calculated per AMCA Standard 301. Values shown are for Installation Type B: free inlet hemispherical fan sone levels.
Some values not documented in unlisted areas. Twin unit data is derived from tests of single width fans.



Other DELHI Catalogues

- Cat. #SS-30** ____ Belt Drive Utility Blowers
- Cat. #SS-31** ____ Forward Curved Inline Duct Blowers
- Cat. #SS-32** ____ Forward Curved Fresh Air Supply Units
- Cat. #SS-38** ____ Heating & Cooling Coils
- Cat. #SS-43** ____ Forward Curved Roof Exhausters
- Cat. #SS-44** ____ Backward Inclined DWDI Blowers
- Cat. #SS-45** ____ Direct Drive Utility Blowers
- Cat. #SS-48** ____ Plenum Fans
- Cat. #SS-49** ____ Belt Drive Forward Curved DWDI Blowers
- Cat. #SS-50** ____ Backward Inclined Square Inline Blowers
- Cat. #SS-51** ____ Downblast Spun Aluminum Exhausters
- Cat. #SS-53** ____ Forward Curved Direct Drive DWDI Blowers
- Cat. #SS-54** ____ Upblast Spun Aluminum Exhausters

WARRANTY

Canarm Air Moving Products are guaranteed for a period of one year against manufacturing defects in material and workmanship when operating under normal conditions. Liability is limited to the replacement of defective parts. Labour and transportation costs are not included.

If a replacement is warranted the following **MUST** be provided:

1. Model of equipment
2. Date of manufacture
3. Original invoice reference number(s)

2157 Parkedale Ave., PO Box 367
Brockville, Ontario K6V 5V6
Canada

tel: 613-342-5424
fax: 800-263-4598
www.canarm.com
www.delhi-industries.com
hvacsales@canarm.ca

REPRESENTED BY:

CAT. #SS-31-7 February 2013
Printed in Canada