



Östberg (Kunshan) Ventilation CO.,LTD certifies that LPK series for model LPK125A shown herein are licensed to bear the AMCA Seal. The ratings shown are based on tests and procedures performed in accordance with AMCA Publication 211 and AMCA Publication 311 and comply with the requirements of the AMCA Certified Ratings Program.



## LPK low profile duct fans

In the beginning of 2000's AB C.A. Östberg introduced the third generation of duct fans.

LPK is a rectangular duct fan with a very low profile for circular ducts. LPK has forward curved impeller and straight-through.

Thanks to the swing-out design the LPK is easy to clean.

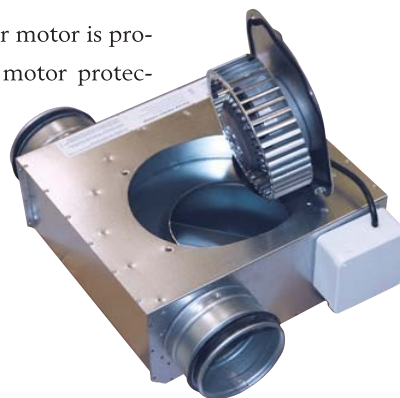
### A PERFECT CHOICE AT LOW BUILT-IN HEIGHT

LPK is a small and practical duct fan. The total height is only two centimetres more than the duct dimension. That makes the LPK an important complement in our range of fans.

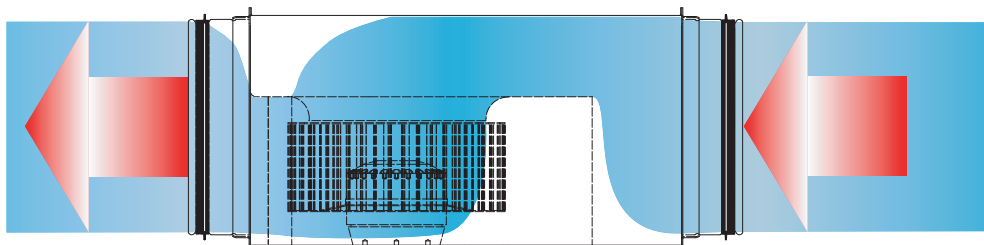
The capacity and efficiency is high and the sound level is low.

The LPK-fan has a well-considered construction with high quality controllable radial fan and a casing of galvanised steel.

The external rotor motor is provided with approved motor protection.



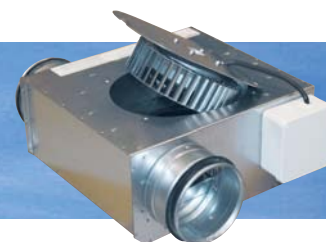
*Thanks to the swing-out design the LPK are really easy to clean.*



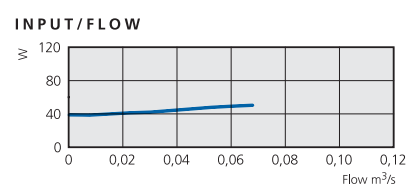
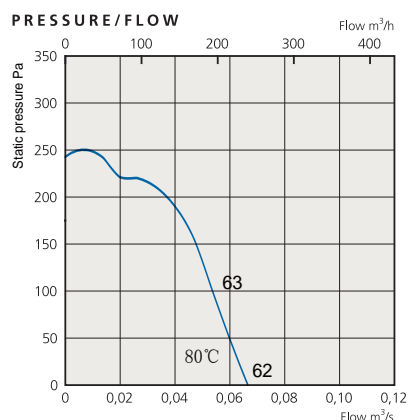
*LPK is the perfect choice where a low built-in height is required, for example in high buildings.*

# LPK 125A

Low profile duct fan with forward curved impeller and swing-out design



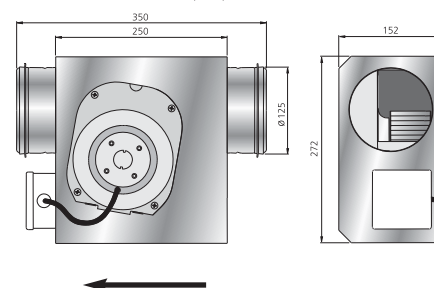
## LPK 125A



### TECHNICAL DATA

LPK	125 A
Voltage, V/Hz	230/50
Current, A	0.21
Input, W	47
Speed, rpm	1257
Weight, kg	3.8
Wiring diagram	4040002
Capacitor, uf	4
Insulation class, motor	F
Motor protection	IP 44

### DIMENSIONS (mm)



### IN-DUCT SOUND DATA

LPK 125 A, 41 l/s 142 Pa	L <sub>pA</sub>	L <sub>WA</sub> tot dB (A)	63	125	250	500	1K	2K	4K	8K
Environment	42	49	29	35	41	41	44	42	36	33
Inlet		60	46	50	52	54	55	50	44	31
Outlet		63	47	51	56	57	60	53	48	38

In-Duct sound data are not licensed by AMCA International.

## Inlet Sound Data

Single figure on performance curves are overall inlet L<sub>WA</sub> sound power levels, derived from measurements taken in laboratory specifically under ducted conditions. Followings is the inlet L<sub>WA</sub> sound power levels (dB) in eight octave bands at four operation point:

Model	Ps(Pa)	Q(m³/s)	L <sub>WA</sub> tot dB(A)	63	125	250	500	1K	2K	4K	8K
LPK 125 A	0.2	0.067	62	72	69	67	57	52	46	42	37
	5	0.064	62	71	70	67	57	52	45	42	36
	50	0.06	63	71	70	70	57	52	45	41	35
	99	0.054	63	71	70	69	57	53	45	41	35

Performance certified is for installation type D-Ducted inlet, Ducted outlet. Speed (RPM) shown is nominal. Performance is based on actual speed of test. Performance ratings do not include the effects of appurtenances (Accessories). The A-weighted sound ratings shown have been calculated per AMCA International Standard 301. The sound power level ratings shown are in decibels, referred to 10-12 watts, calculated per AMCA International Standard 301. Values shown are for inlet L<sub>WA</sub> and L<sub>WA</sub>(A) sound power levels for installation type D: ducted inlet, ducted outlet. Ratings include the effects of duct end correction.

## Wiring diagrams





## ÖSTBERG

**FOR HEALTHY INDOOR CLIMATE  
WITH ENERGY EFFICIENT VENTILATION**

Östberg is one of the leading producers of fans in the world.

In the early 1970s the founder and owner of the company designed the first circular and rectangular in-line radial duct fan with external rotor motor and straight-through airflow (180°) in the history.

We have continued to develop new products and today we offer a wide product range of centrifugal in-line duct fans, roof fans, wall fans and energy recovery units.

Our goal is to always offer quality products at competitive prices.



**AB C.A.ÖSTBERG**

ÖSTBERG (KUNSHAN) VENTILATION CO.,LTD

Tel: 0512-57639555

Fax: 0512-57639588

E-mail: [info@ostberg.com](mailto:info@ostberg.com)

[www.ostberg.com](http://www.ostberg.com)