

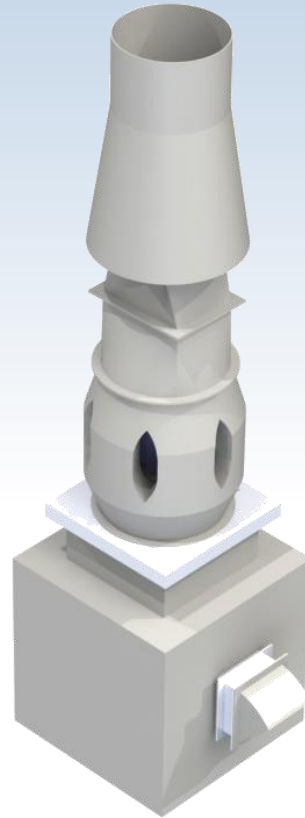
---

# Laboratory Exhaust Systems

## SKYPLUME G1-ELMV & ELLV

AMCA 260  
tested

FRP CONSTRUCTION



- **233%-288% Induction Rates**
- **Fourteen Sizes Ranging from 150 to 542**
  - **Volumes up to 81,700 CFM per fan**
  - **Static Pressures up to 10" W.G.**



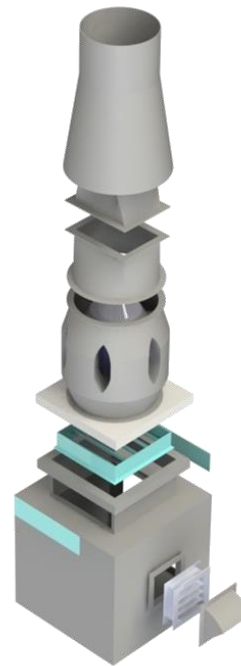
**Plasticair**

# SKYPLUME G1-ELMV AND ELLV Centrifugal Configuration AMCA 260 Tested

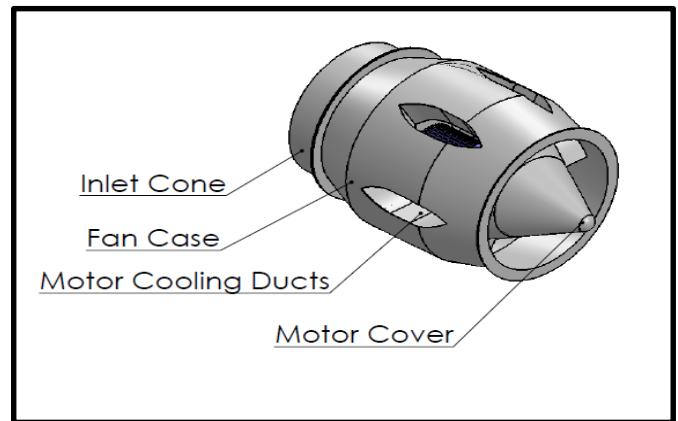
Plasticair's SKYPLUME G1-ELMV & ELLV – DMF series of FRP Lab Exhaust Fans have been specifically designed for exposure to gas streams containing corrosive fumes. The rugged mixed flow impeller and robust housing offer favourable features such as corrosion resistant FRP construction for all gas contact parts. These units operate at high efficiencies while maintaining a quiet operation. Industries such as Waste Water Treatment, Pulp and Paper, Research Laboratories and Chemical Manufacturing will benefit from utilizing this product as it provides industrial quality, and long life.

SKYPLUME G1-ELMV & ELLV (Extended Lobe) Fans incorporate a Mixed Flow unit, conclusive with Medium and Low velocity nozzle design in addition to integral wind-band to maximize dilution ratios. Plasticair has achieved certified induction ratios between 233%-267%. This patented and enhanced design maximizes both plume height and dilution versus horsepower.

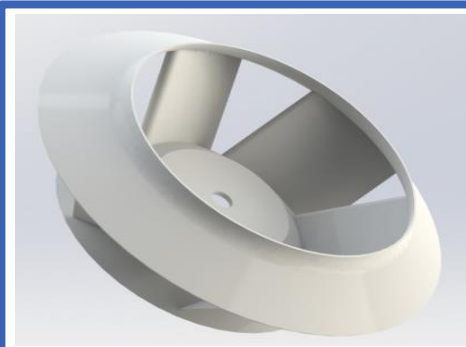
Arrangement # 4 - direct drive option is available and it AMCA certified. Our construction is comprised of a UV stable FRP, which provides maximum corrosion resistance and strength. All of Plasticair's standard designs meet a 125 MPH (201 kmh) wind load. 150 MPH (241 kmh) wind load construction is available upon request.



**Exploded view**



Plasticair Inc. certifies that the SKYPLUME-G1-ELMV - DMF and ELLV - DMF laboratory exhaust model shown herein are licences to bear the AMCA seal. The ratings shown are based on tests and procedures performed in accordance with AMCA publication, 210 & 211 and publication 310 & 311, energy efficiency classification 205 and comply with the requirements of the AMCA Certified Ratings Program. The AMCA Certified Ratings Seal applies to Induced Flow Fan Air and Sound Performance (AMCA standard 260).



## Wheel Construction

The SKYPLUME G1- ELMV & ELLV - DMF series impeller is of a high efficiency non-overloading design. The Mixed Flow wheel is constructed of solid vinyl ester resin and reinforcing glass. A sprocket and bushing are used for shaft attachment and are completely covered with a minimum 3/16" (5mm) of FRP lay-up. All gas contact points are FRP, complete with corrosion barrier. Plasticair's commitment to quality ensures that only hand lay-up methods are utilized for fabrication. This class 2 Impeller is comfortably rated to handle 18,000 feet per minute (91.4 m/sec) tip speed.

## Standard Features

- Motor Located out of air stream.
- FRP (Rust Proof) Mixed Flow wheel design.
- FRP (Rust Proof) SKYPLUME stack.
- All FRP 0-25 flame spread per ASTM-E84.
- Inlet: FRP roof curb cap.
- 316/304 ss hardware.
- FRP Shaft Sleeve.
- Design to 125 MPH wind-load.
- Direct Drive Arrangement # 4 – Direct couple.

### Shaft and Teflon Seal:

This effective design has the motor and steel shaft completely protected from the corrosive gas stream. The shaft is encapsulated with a solid FRP shaft sleeve, which protrudes out from the Teflon disk shaft seal, located on the inner tube wall. The Teflon seal and shaft sleeve are a machine fit for the best possible elimination of leaking gas.

### FRP (RUST Proof) UV stable housing design:

Designed for industrial and institutional applications, the housing is solid FRP throughout. All FRP exposed to the corrosive gas stream is constructed with a resin rich corrosion barrier complete with C-veil. Airstream straightening sections are designed into the 6 ducts that extend from the exterior to the interior which are also designed for motor excess. The motor is completely protected from the toxic airstream and is only exposed to outside or ambient air.

**Fasteners:** 316 stainless steel

## Optional Features

### Inlet Plenum:

- FRP Rust Proof UV Stable – 25 year wall warranty against failure do to rust and UV attack.
- Single wall
- Double wall with 2” insulation
- Energy recovery run around coils
- Bypass ss Dampers – Constructed in FRP, 316 ss, 304 ss, Aluminum epoxy coated, Galvanized.
- Damper electric actuators.
- Other materials of construction available: 316 ss, 304 ss, Galvanized, Mild Steel Epoxy coated.

### Spark Resistant Construction:

- NEMA 3R disconnect switch, mounted and wired.
- NEMA 3R, 7, 9 explosion proof disconnect switch, mounted and wired.
- Class 1 Division Motors.
- Fans are Graphite lined with grounding Kit – Spark Proof.

### Factory Assemble Systems:

- Common rail system under Fans and Plenum - FRP coated - rust proof.
- Energy recovery run around coil.
- 

### Silencer Packages:

- Stainless Steel Silencer built into SKYPLUME G1 ELMV & ELLV stacks.
- Stainless Steel Silencer built into bypass dampers an intake plenum.
- Self-Supporting designs available up to 200 km (125 MPH) wind load.

### Roof Curbs:

- Heavy Duty galvanized roof curbs – up to 7 gauge construction.
- 

### Vibration Isolation Packages:

- 1” spring – housed and restrained.
- 2” spring – housed and restrained.
- Isolation dampers – constructed FRP, 316 ss, 304 ss.
- Isolation dampers – Aluminum epoxy coated construction.

Available Motors: VFD Ready, Premium Efficiency Mill and Chemical Duty, Explosion Proof.

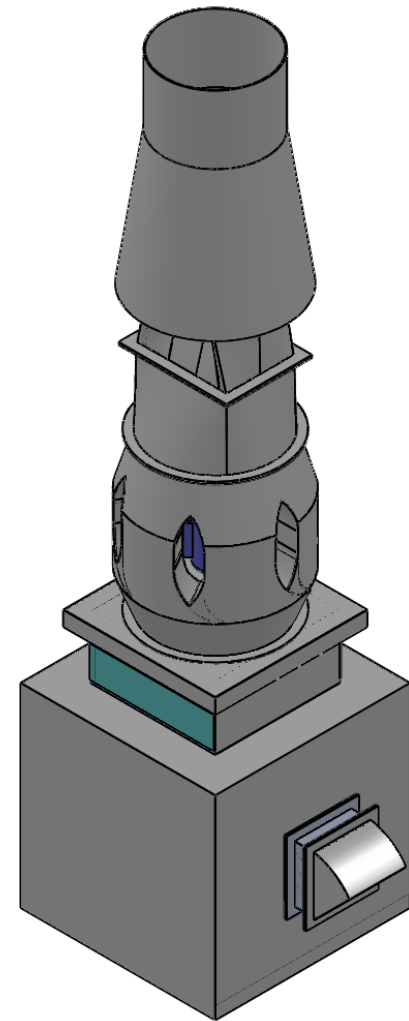
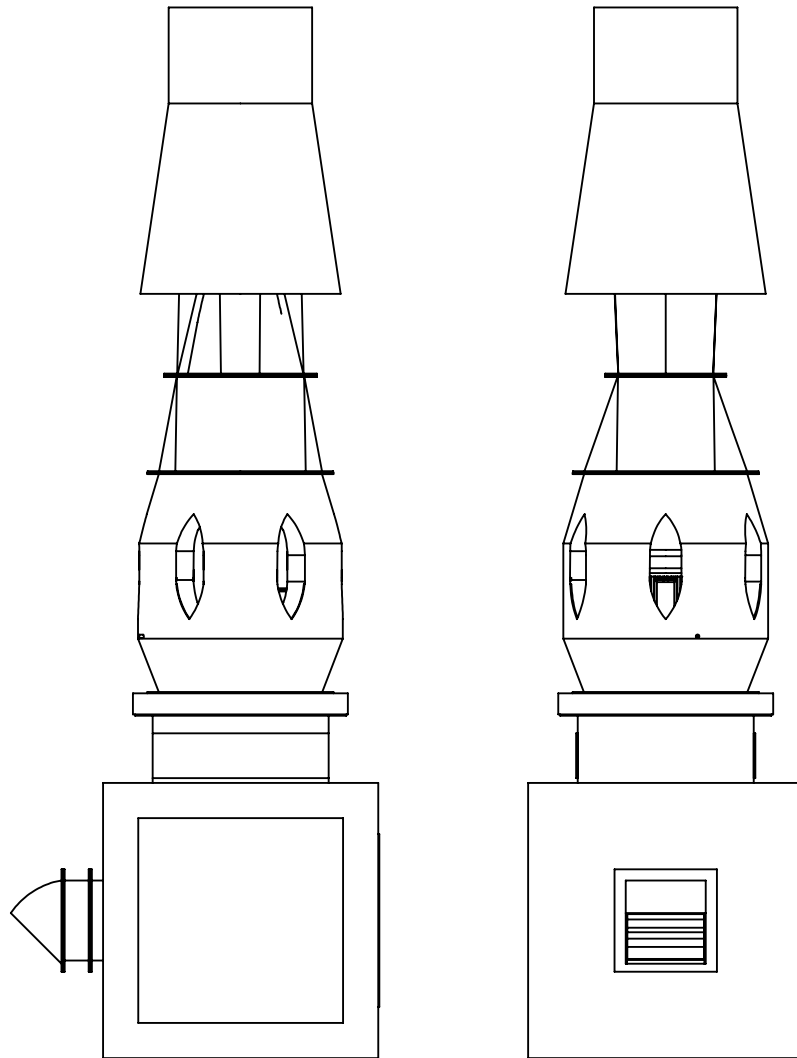
Flexible Inlet connections

Nexus lining for use with Hydrofluoric Acid

Gravity type back draft dampers

Weather Cover – OSHA standard

# DRIVE ARRANGEMENT 4



5

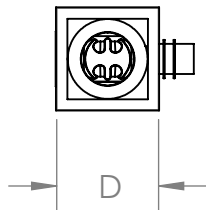
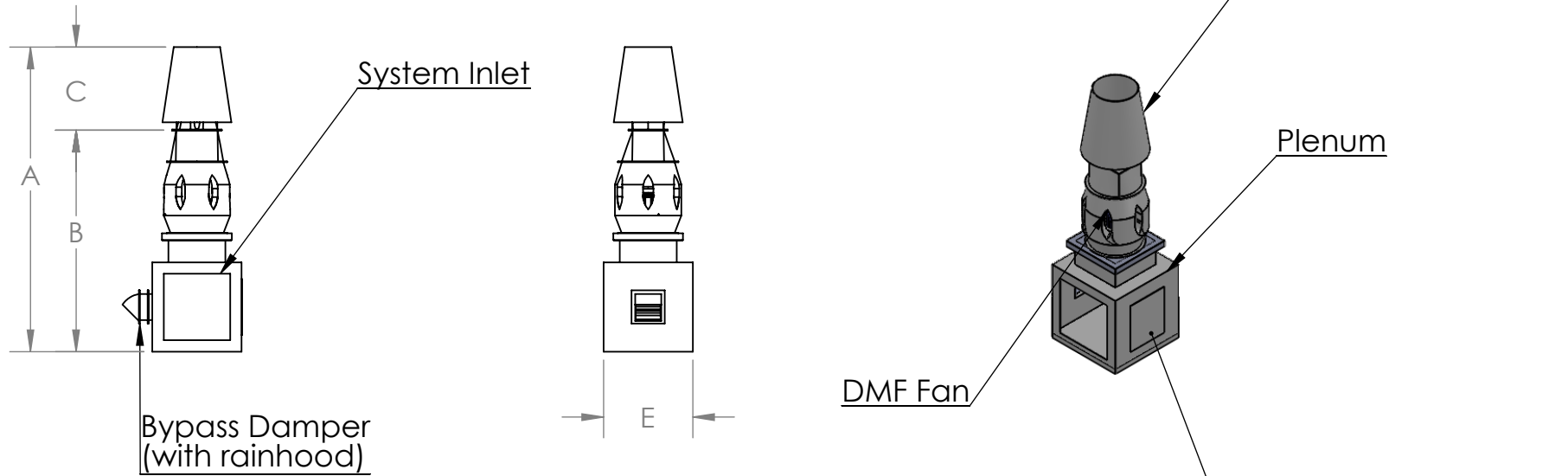
4

3

2

1

# 1 FAN INLINE SYSTEM



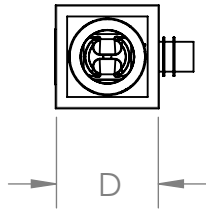
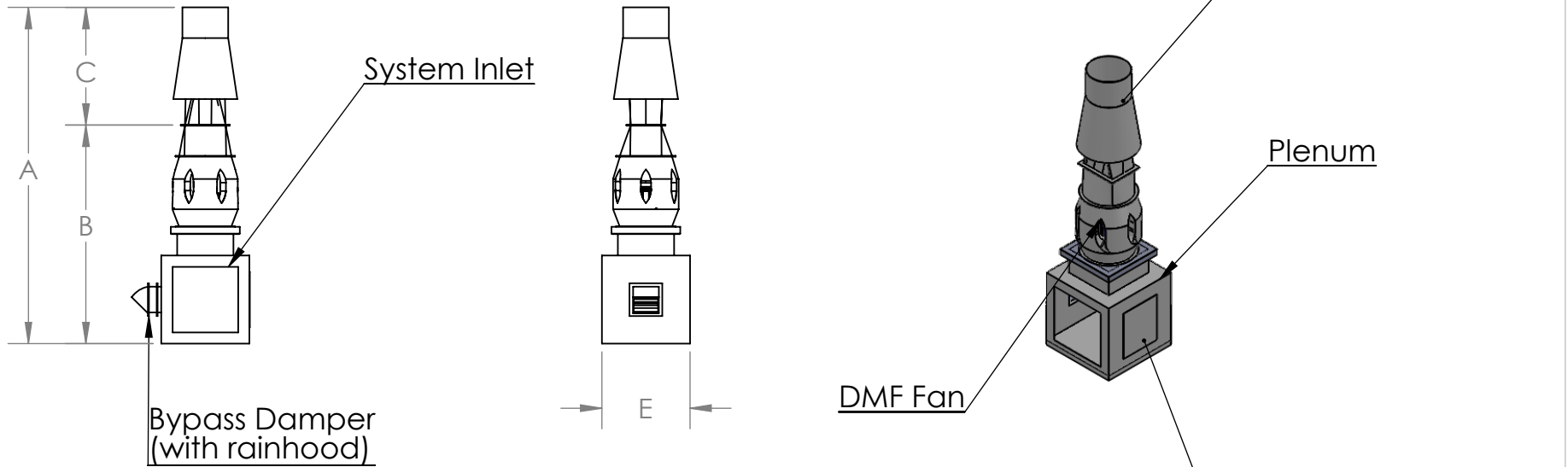
Size	A	B	C	D	E
SKYPLUME G1- ELLV- 18 - DMF 150	139.75	99.75	40.00	42.65	33.38
SKYPLUME G1- ELLV- 20 - DMF 165	147.12	102.94	44.18	44.40	36.88
SKYPLUME G1- ELLV- 22 - DMF 182	155.39	106.51	48.88	46.40	40.88
SKYPLUME G1- ELLV- 24 - DMF 182	166.82	117.94	53.31	47.65	43.38
SKYPLUME G1- ELLV- 27 - DMF 222	180.57	120.94	59.63	49.15	52.38
SKYPLUME G1- ELLV- 30 - DMF 245	191.36	125.31	66.05	50.65	55.38
SKYPLUME G1- ELLV- 33 - DMF 270	210.94	138.06	72.88	52.34	58.75
SKYPLUME G1- ELLV- 36 - DMF 300	224.56	144.31	80.25	54.46	63.00
SKYPLUME G1- ELLV- 40 - DMF 330	238.21	149.63	88.58	56.53	67.13
SKYPLUME G1- ELLV- 44 - DMF 365	263.89	166.13	97.76	58.90	71.88
SKYPLUME G1- ELLV- 49 - DMF 402	281.51	173.00	108.51	61.40	76.88
SKYPLUME G1- ELLV- 54 - DMF 445	300.63	181.44	119.19	63.78	81.63
SKYPLUME G1- ELLV- 60 - DMF 490	326.72	195.00	131.72	67.96	90.00
SKYPLUME G1- ELLV- 66 - DMF 542	350.35	204.94	145.41	73.34	100.75

**PROPRIETARY AND CONFIDENTIAL**

THE INFORMATION CONTAINED IN THIS DRAWING IS THE SOLE PROPERTY OF PLASTICAIR INC. ANY REPRODUCTION IN PART OR AS A WHOLE WITHOUT THE WRITTEN PERMISSION OF PLASTICAIR INC. IS PROHIBITED.



# 1 FAN INLINE SYSTEM



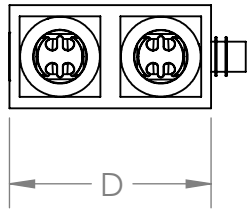
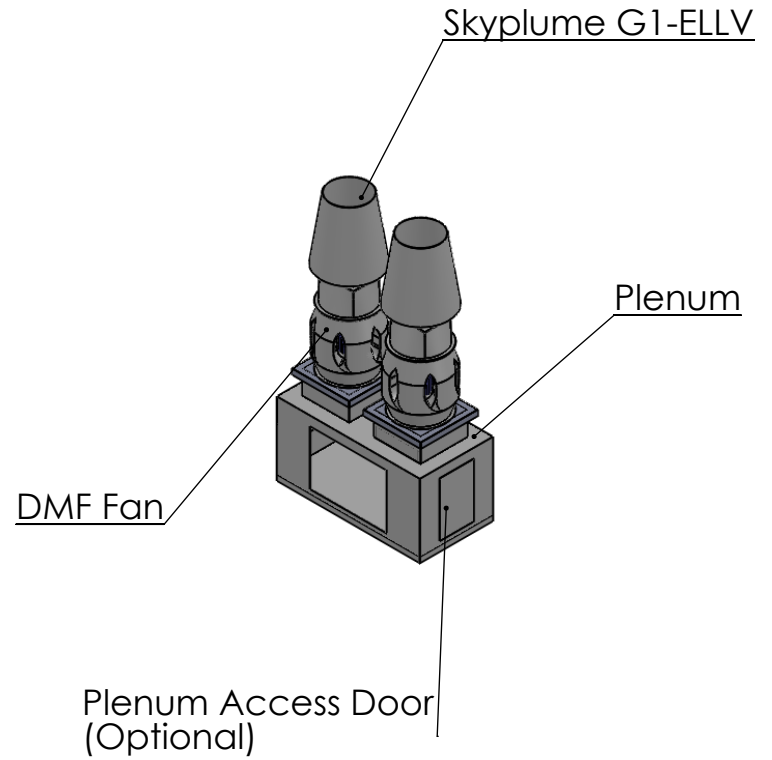
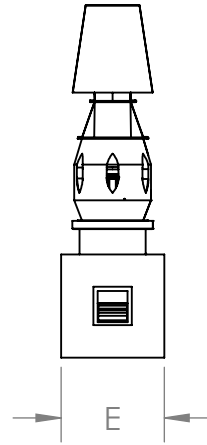
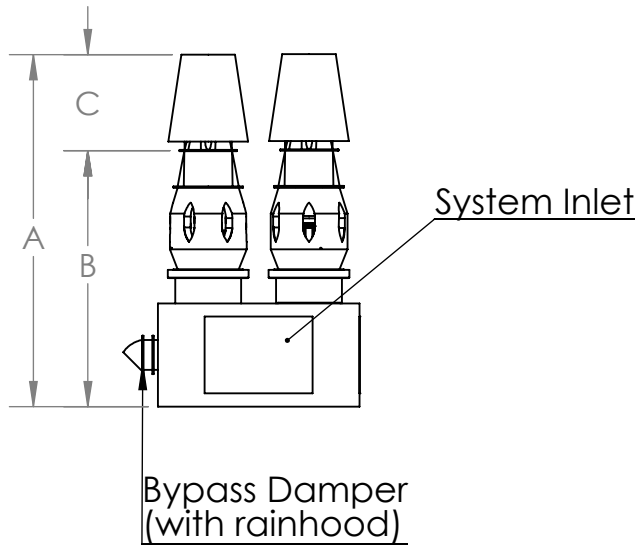
Size	A	B	C	D	E
SKYPLUME G1- ELMV- 18 - DMF 150	157.25	99.75	57.50	43.41	33.38
SKYPLUME G1- ELMV- 20 - DMF 165	166.34	102.94	63.40	45.16	36.88
SKYPLUME G1- ELMV- 22 - DMF 182	176.89	106.51	70.38	47.16	40.88
SKYPLUME G1- ELMV- 24 - DMF 200	195.44	117.94	77.50	48.41	43.38
SKYPLUME G1- ELMV- 27 - DMF 222	206.19	120.94	85.25	49.91	52.38
SKYPLUME G1- ELMV- 30 - DMF 245	220.21	125.31	94.90	51.41	55.38
SKYPLUME G1- ELMV- 33 - DMF 270	242.06	138.06	104.00	53.09	58.75
SKYPLUME G1- ELMV- 36 - DMF 300	259.56	144.31	115.25	55.22	63.00
SKYPLUME G1- ELMV- 40 - DMF 330	276.88	149.63	127.25	57.28	67.13
SKYPLUME G1- ELMV- 44 - DMF 365	306.63	166.13	140.50	59.66	71.88
SKYPLUME G1- ELMV- 49 - DMF 402	329.13	173.00	156.13	62.16	76.88
SKYPLUME G1- ELMV- 54 - DMF 445	352.44	181.44	171.00	64.53	81.63
SKYPLUME G1- ELMV- 60 - DMF 490	384.50	195.00	189.50	68.72	90.00
SKYPLUME G1- ELMV- 66 - DMF 542	413.44	204.94	208.50	74.09	100.75

**PROPRIETARY AND CONFIDENTIAL**

THE INFORMATION CONTAINED IN THIS DRAWING IS THE SOLE PROPERTY OF PLASTICAIR INC. ANY REPRODUCTION IN PART OR AS A WHOLE WITHOUT THE WRITTEN PERMISSION OF PLASTICAIR INC. IS PROHIBITED.



## 2 FANS INLINE SYSTEM



Size	A	B	C	D	E
SKYPLUME G1- ELLV- 18 - DMF 150	139.75	99.75	40.00	78.18	33.38
SKYPLUME G1- ELLV- 20 - DMF 165	147.12	102.94	44.18	81.68	36.88
SKYPLUME G1- ELLV- 22 - DMF 182	155.39	106.51	48.88	85.68	40.88
SKYPLUME G1- ELLV- 24 - DMF 182	166.82	117.94	53.31	88.18	43.38
SKYPLUME G1- ELLV- 27 - DMF 222	180.57	120.94	59.63	91.18	52.38
SKYPLUME G1- ELLV- 30 - DMF 245	191.36	125.31	66.05	94.18	55.38
SKYPLUME G1- ELLV- 33 - DMF 270	210.94	138.06	72.88	97.55	58.75
SKYPLUME G1- ELLV- 36 - DMF 300	224.56	144.31	80.25	101.80	63.00
SKYPLUME G1- ELLV- 40 - DMF 330	238.21	149.63	88.58	105.93	67.13
SKYPLUME G1- ELLV- 44 - DMF 365	263.89	166.13	97.76	110.68	71.88
SKYPLUME G1- ELLV- 49 - DMF 402	281.51	173.00	108.51	115.68	76.88
SKYPLUME G1- ELLV- 54 - DMF 445	300.63	181.44	119.19	120.43	81.63
SKYPLUME G1- ELLV- 60 - DMF 490	326.72	195.00	131.72	128.80	90.00
SKYPLUME G1- ELLV- 66 - DMF 542	350.35	204.94	145.41	139.55	100.75

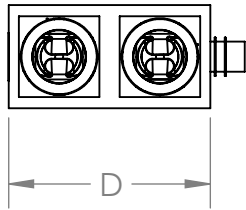
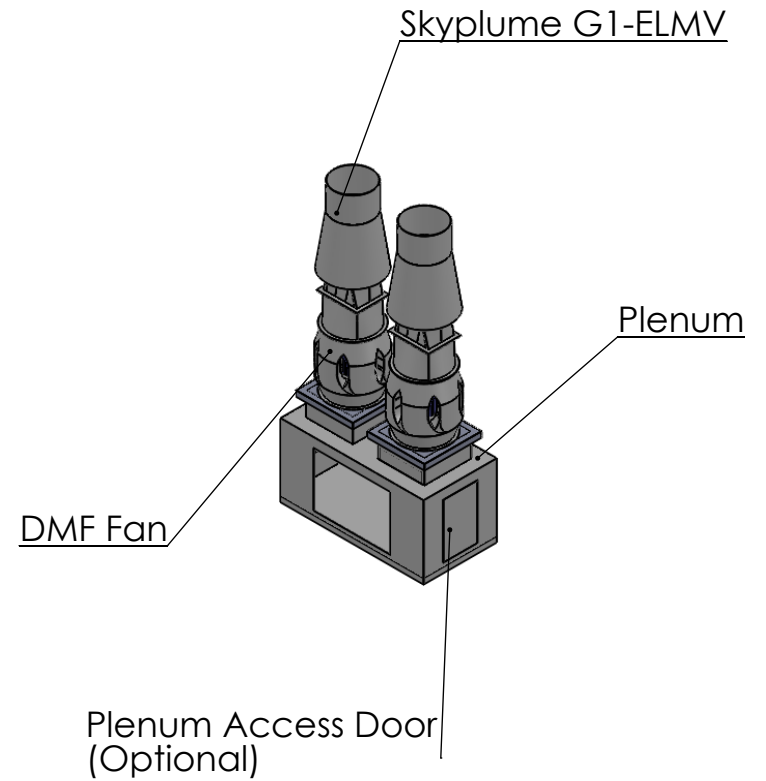
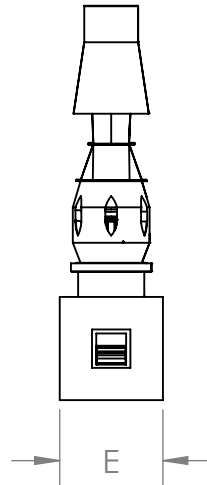
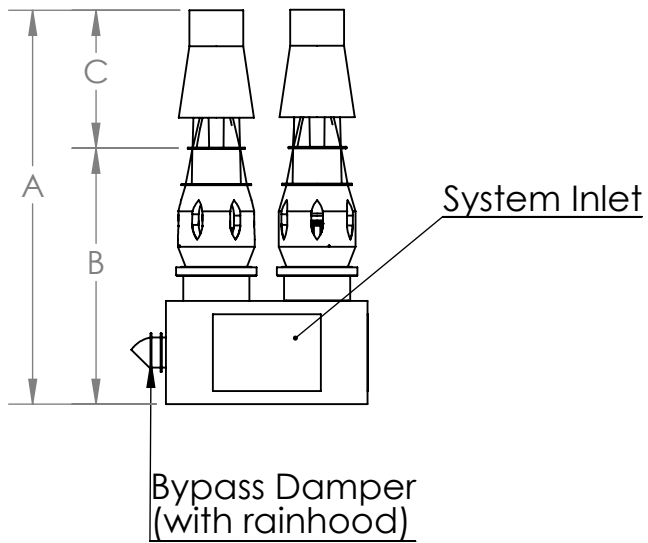
**PROPRIETARY AND CONFIDENTIAL**

THE INFORMATION CONTAINED IN THIS DRAWING IS THE SOLE PROPERTY OF PLASTICAIR INC. ANY REPRODUCTION IN PART OR AS A WHOLE WITHOUT THE WRITTEN PERMISSION OF PLASTICAIR INC. IS PROHIBITED.





## 2 FANS INLINE SYSTEM



Size	A	B	C	D	E
SKYPLUME G1- ELMV- 18 - DMF 150	157.25	99.75	57.50	76.26	33.38
SKYPLUME G1- ELMV- 20 - DMF 165	166.34	102.94	63.40	79.76	36.88
SKYPLUME G1- ELMV- 22 - DMF 182	176.89	106.51	70.38	83.76	40.88
SKYPLUME G1- ELMV- 24 - DMF 200	195.44	117.94	77.50	86.26	43.38
SKYPLUME G1- ELMV- 27 - DMF 222	206.19	120.94	85.25	89.26	52.38
SKYPLUME G1- ELMV- 30 - DMF 245	220.21	125.31	94.90	92.26	55.38
SKYPLUME G1- ELMV- 33 - DMF 270	242.06	138.06	104.00	95.63	58.75
SKYPLUME G1- ELMV- 36 - DMF 300	259.56	144.31	115.25	99.88	63.00
SKYPLUME G1-ELMV- 40 - DMF 330	276.88	149.63	127.25	104.01	67.13
SKYPLUME G1- ELMV- 44 - DMF 365	306.63	166.13	140.50	108.76	71.88
SKYPLUME G1- ELMV- 49 - DMF 402	329.13	173.00	156.13	113.76	76.88
SKYPLUME G1- ELMV- 54 - DMF 445	352.44	181.44	171.00	118.51	81.63
SKYPLUME G1- ELMV- 60 - DMF 490	384.50	195.00	189.50	126.88	90.00
SKYPLUME G1- ELMV- 66 - DMF 542	413.44	204.94	208.50	137.63	100.75

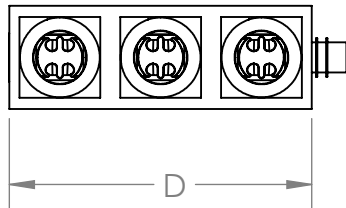
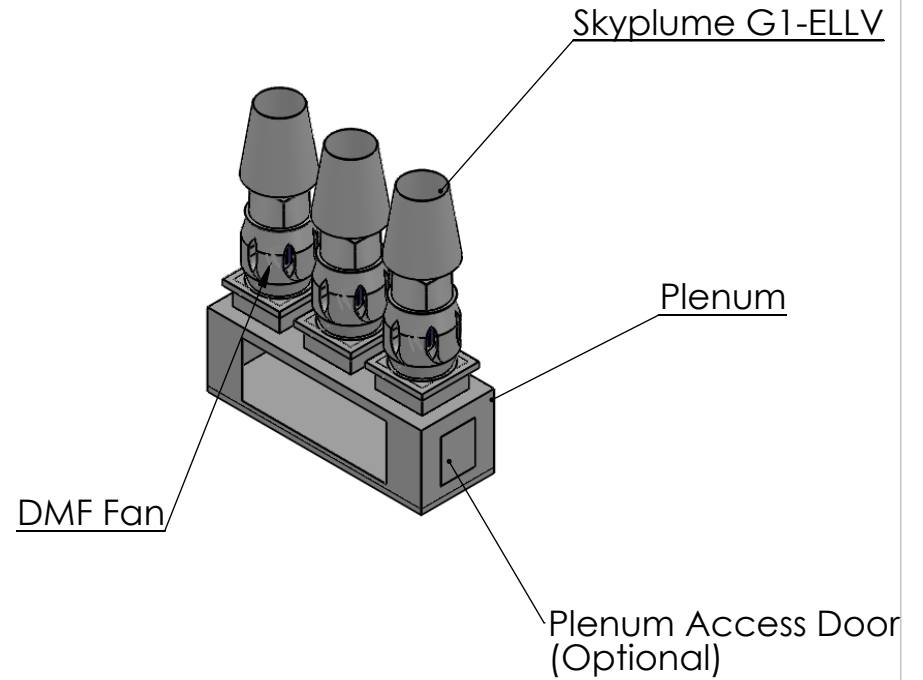
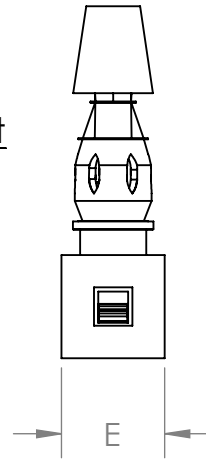
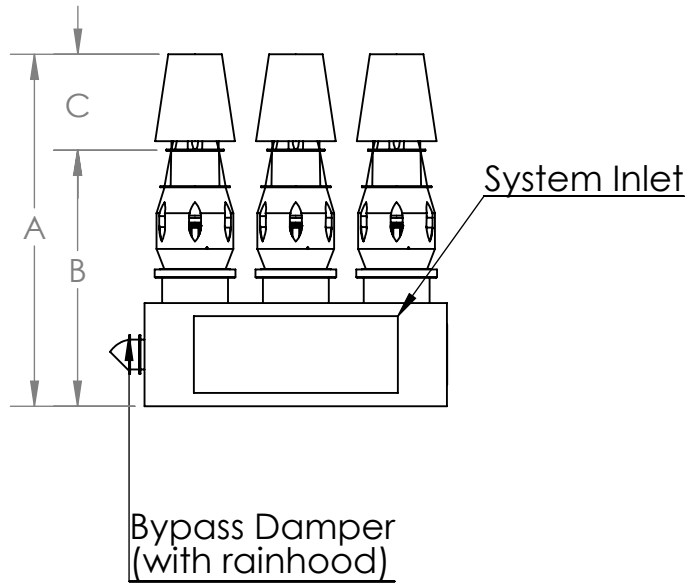
**PROPRIETARY AND CONFIDENTIAL**

THE INFORMATION CONTAINED IN THIS DRAWING IS THE SOLE PROPERTY OF PLASTICAIR INC. ANY REPRODUCTION IN PART OR AS A WHOLE WITHOUT THE WRITTEN PERMISSION OF PLASTICAIR INC. IS PROHIBITED.





### 3 FANS INLINE SYSTEM



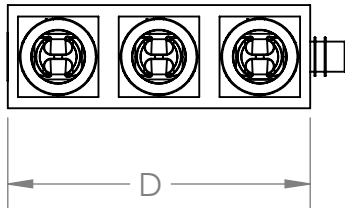
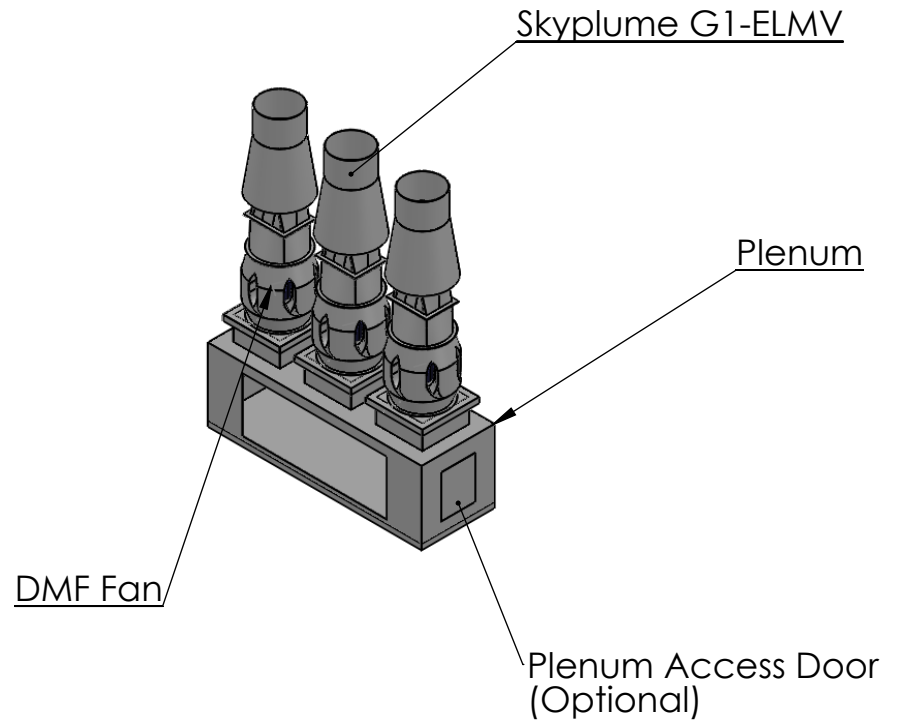
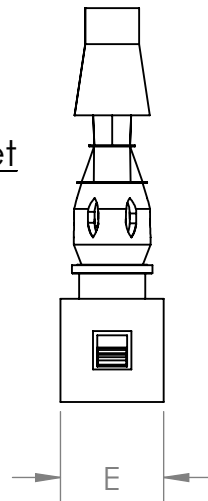
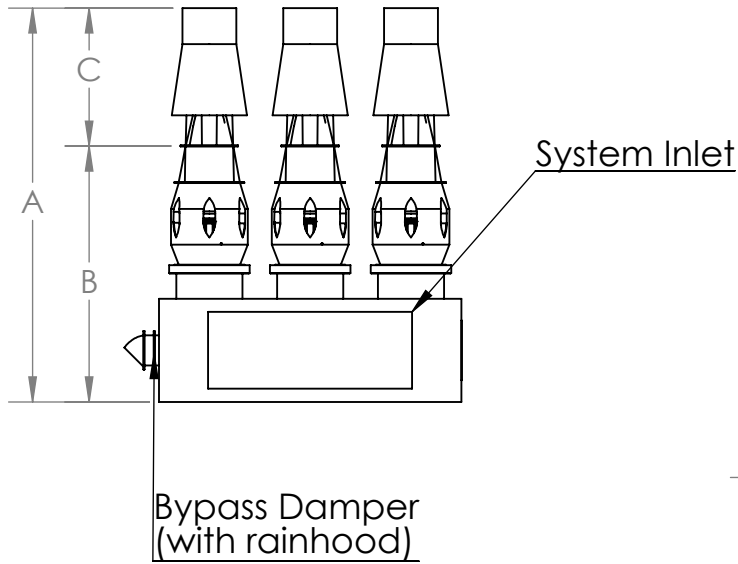
Size	A	B	C	D	E
SKYPLUME G1- ELLV- 18 - DMF 150	139.75	99.75	40.00	117.27	33.38
SKYPLUME G1- ELLV- 20 - DMF 165	147.12	102.94	44.18	122.52	36.88
SKYPLUME G1- ELLV- 22 - DMF 182	155.39	106.51	48.88	128.52	40.88
SKYPLUME G1- ELLV- 24 - DMF 182	166.82	117.94	53.31	132.27	43.38
SKYPLUME G1- ELLV- 27 - DMF 222	180.57	120.94	59.63	136.77	52.38
SKYPLUME G1- ELLV- 30 - DMF 245	191.36	125.31	66.05	141.27	55.38
SKYPLUME G1- ELLV- 33 - DMF 270	210.94	138.06	72.88	146.33	58.75
SKYPLUME G1- ELLV- 36 - DMF 300	224.56	144.31	80.25	152.70	63.00
SKYPLUME G1- ELLV- 40 - DMF 330	238.21	149.63	88.58	158.90	67.13
SKYPLUME G1- ELLV- 44 - DMF 365	263.89	166.13	97.76	166.02	71.88
SKYPLUME G1- ELLV- 49 - DMF 402	281.51	173.00	108.51	173.52	76.88
SKYPLUME G1- ELLV- 54 - DMF 445	300.63	181.44	119.19	180.65	81.63
SKYPLUME G1- ELLV- 60 - DMF 490	326.72	195.00	131.72	193.20	90.00
SKYPLUME G1- ELLV- 66 - DMF 542	350.35	204.94	145.41	209.33	100.75

**PROPRIETARY AND CONFIDENTIAL**

THE INFORMATION CONTAINED IN THIS DRAWING IS THE SOLE PROPERTY OF PLASTICAIR INC. ANY REPRODUCTION IN PART OR AS A WHOLE WITHOUT THE WRITTEN PERMISSION OF PLASTICAIR INC. IS PROHIBITED.



### 3 FANS INLINE SYSTEM



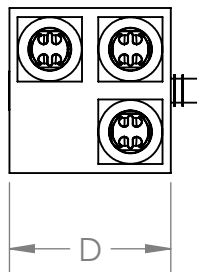
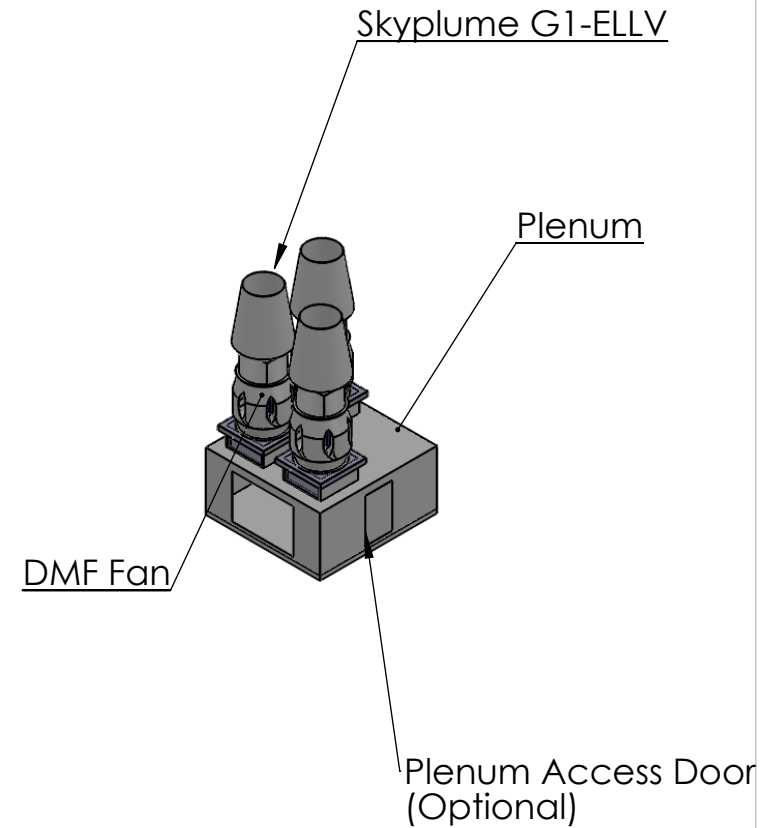
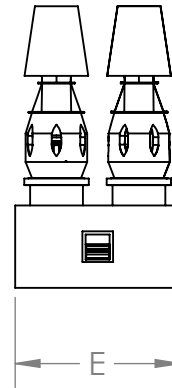
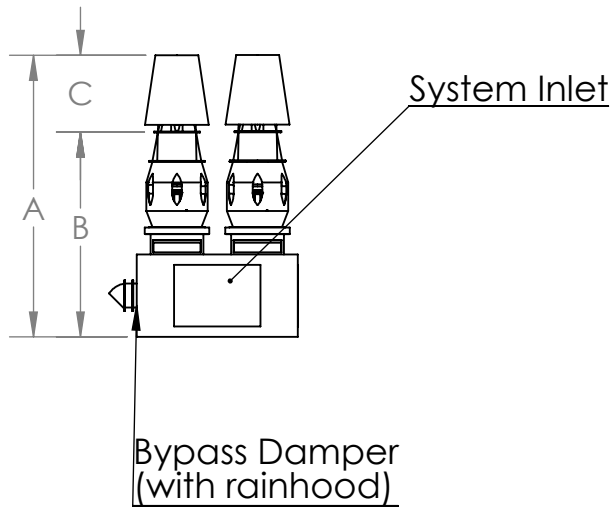
Size	A	B	C	D	E
SKYPLUME G1- ELMV- 18 - DMF 150	157.25	99.75	57.50	114.38	33.38
SKYPLUME G1- ELMV- 20 - DMF 165	166.34	102.94	63.40	119.63	36.88
SKYPLUME G1- ELMV- 22 - DMF 182	176.89	106.51	70.38	125.63	40.88
SKYPLUME G1- ELMV- 24 - DMF 200	195.44	117.94	77.50	129.38	43.38
SKYPLUME G1- ELMV- 27 - DMF 222	206.19	120.94	85.25	133.88	52.38
SKYPLUME G1- ELMV- 30 - DMF 245	220.21	125.31	94.90	138.38	55.38
SKYPLUME G1- ELMV- 33 - DMF 270	242.06	138.06	104.00	143.44	58.75
SKYPLUME G1- ELMV- 36 - DMF 300	259.56	144.31	115.25	149.81	63.00
SKYPLUME G1- ELMV- 40 - DMF 330	276.88	149.63	127.25	156.01	67.13
SKYPLUME G1- ELMV- 44 - DMF 365	306.63	166.13	140.50	163.13	71.88
SKYPLUME G1- ELMV- 49 - DMF 402	329.13	173.00	156.13	170.63	76.88
SKYPLUME G1- ELMV- 54 - DMF 445	352.44	181.44	171.00	177.76	81.63
SKYPLUME G1- ELMV- 60 - DMF 490	384.50	195.00	189.50	190.31	90.00
SKYPLUME G1- ELMV- 66 - DMF 542	413.44	204.94	208.50	206.44	100.75

**PROPRIETARY AND CONFIDENTIAL**

THE INFORMATION CONTAINED IN THIS DRAWING IS THE SOLE PROPERTY OF PLASTICAIR INC. ANY REPRODUCTION IN PART OR AS A WHOLE WITHOUT THE WRITTEN PERMISSION OF PLASTICAIR INC. IS PROHIBITED.



### 3 FANS OPPOSED SYSTEM



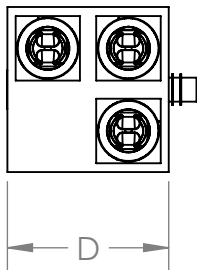
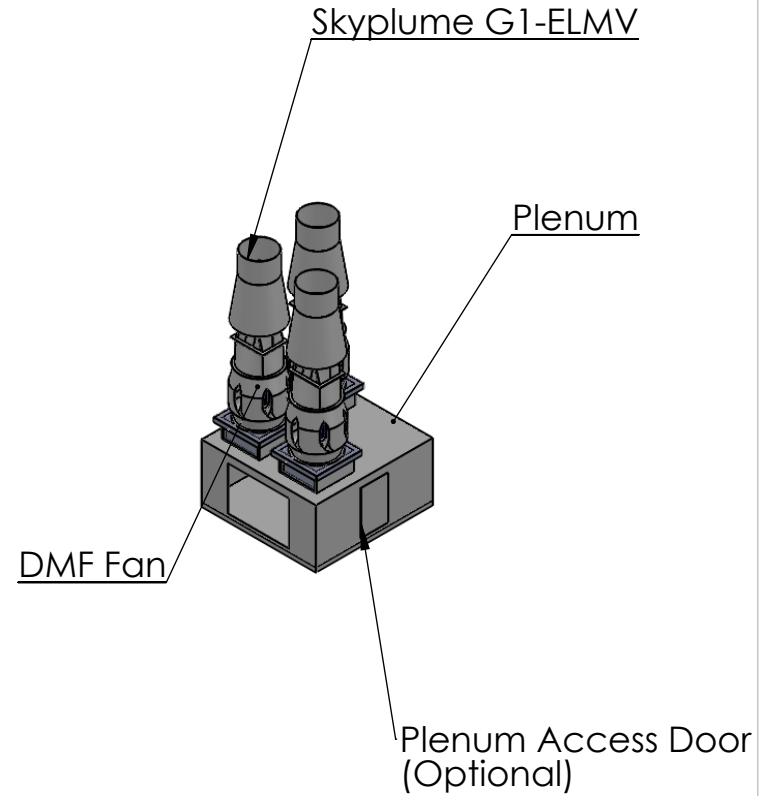
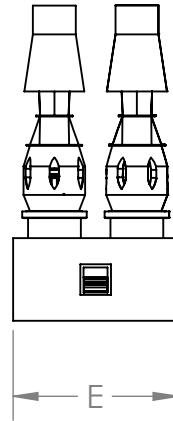
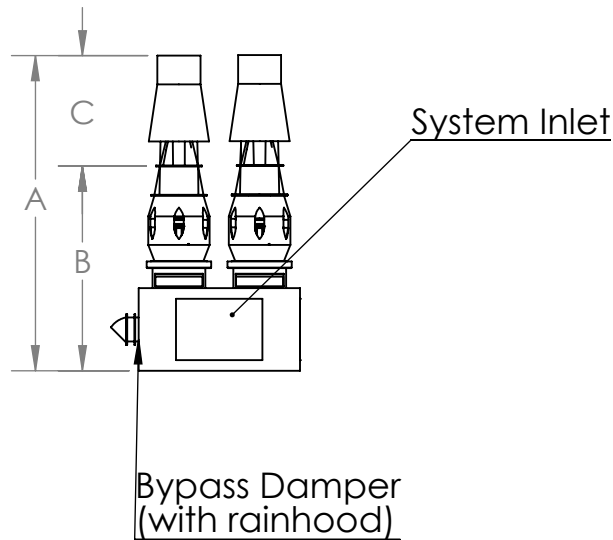
Size	A	B	C	D	E
SKYPLUME G1- ELLV- 18 - DMF 150	139.75	99.75	40.00	78.18	66.76
SKYPLUME G1- ELLV- 20 - DMF 165	147.12	102.94	44.18	81.68	73.76
SKYPLUME G1- ELLV- 22 - DMF 182	155.39	106.51	48.88	85.68	81.76
SKYPLUME G1- ELLV- 24 - DMF 182	166.82	117.94	53.31	88.18	86.76
SKYPLUME G1- ELLV- 27 - DMF 222	180.57	120.94	59.63	91.18	104.76
SKYPLUME G1- ELLV- 30 - DMF 245	191.36	125.31	66.05	94.18	110.76
SKYPLUME G1- ELLV- 33 - DMF 270	210.94	138.06	72.88	97.55	117.50
SKYPLUME G1- ELLV- 36 - DMF 300	224.56	144.31	80.25	101.80	126.00
SKYPLUME G1- ELLV- 40 - DMF 330	238.21	149.63	88.58	105.93	134.26
SKYPLUME G1- ELLV- 44 - DMF 365	263.89	166.13	97.76	110.68	143.76
SKYPLUME G1- ELLV- 49 - DMF 402	281.51	173.00	108.51	115.68	153.76
SKYPLUME G1- ELLV- 54 - DMF 445	300.63	181.44	119.19	120.43	163.26
SKYPLUME G1- ELLV- 60 - DMF 490	326.72	195.00	131.72	128.80	180.00
SKYPLUME G1- ELLV- 66 - DMF 542	350.35	204.94	145.41	139.55	201.50

**PROPRIETARY AND CONFIDENTIAL**

THE INFORMATION CONTAINED IN THIS DRAWING IS THE SOLE PROPERTY OF PLASTICAIR INC. ANY REPRODUCTION IN PART OR AS A WHOLE WITHOUT THE WRITTEN PERMISSION OF PLASTICAIR INC. IS PROHIBITED.



### 3 FANS OPPOSED SYSTEM



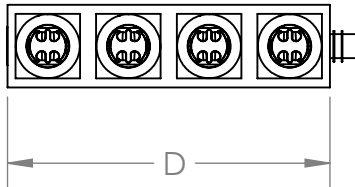
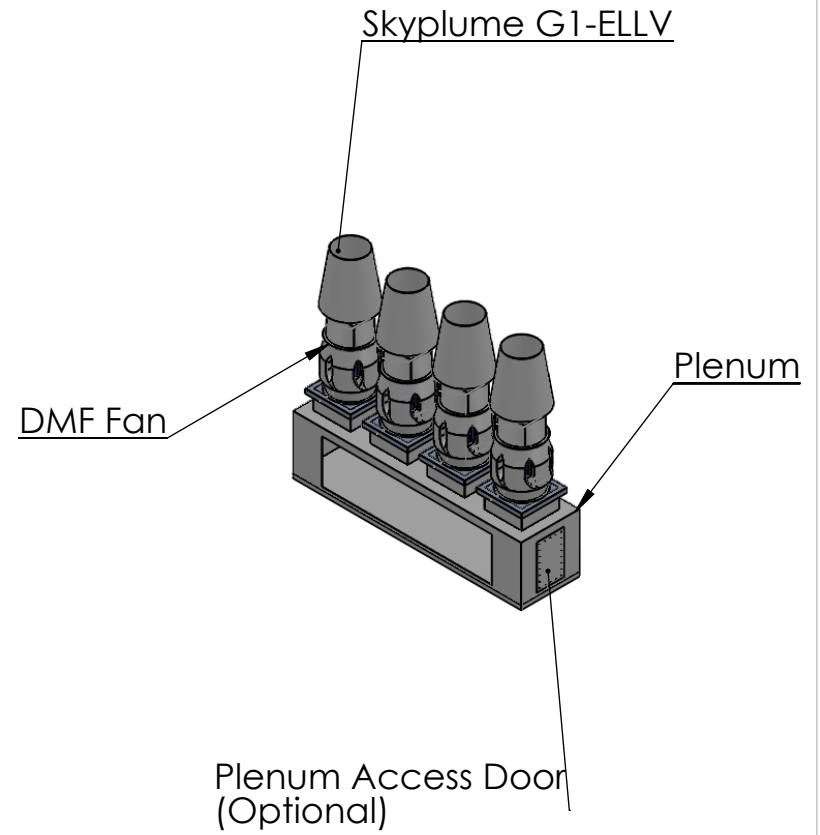
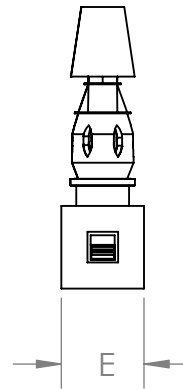
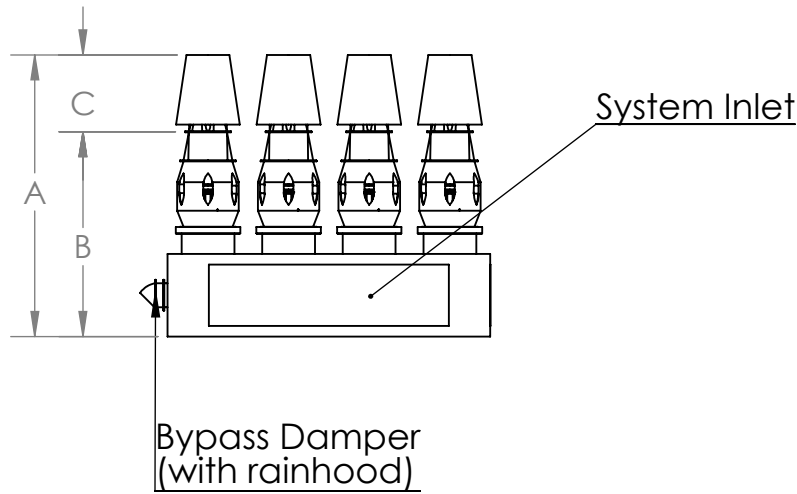
Size	A	B	C	D	E
SKYPLUME G1- ELMV- 18 - DMF 150	157.25	99.75	57.50	76.26	66.76
SKYPLUME G1-ELMV- 20 - DMF 165	166.34	102.94	63.40	79.76	73.76
SKYPLUME G1- ELMV- 22 - DMF 182	176.89	106.51	70.38	83.76	81.76
SKYPLUME G1- ELMV- 24 - DMF 200	195.44	117.94	77.50	86.26	86.76
SKYPLUME G1- ELMV- 27 - DMF 222	206.19	120.94	85.25	89.26	104.76
SKYPLUME G1- ELMV- 30 - DMF 245	220.21	125.31	94.90	92.26	110.76
SKYPLUME G1- ELMV- 33 - DMF 270	242.06	138.06	104.00	95.63	117.50
SKYPLUME G1- ELMV- 36 - DMF 300	259.56	144.31	115.25	99.88	126.00
SKYPLUME G1- ELMV- 40 - DMF 330	276.88	149.63	127.25	104.01	134.26
SKYPLUME G1- ELMV- 44 - DMF 365	306.63	166.13	140.50	108.76	143.76
SKYPLUME G1-ELMV- 49 - DMF 402	329.13	173.00	156.13	113.76	153.76
SKYPLUME G1- ELMV- 54 - DMF 445	352.44	181.44	171.00	118.51	163.26
SKYPLUME G1- ELMV- 60 - DMF 490	384.50	195.00	189.50	126.88	180.00
SKYPLUME G1- ELMV- 66 - DMF 542	413.44	204.94	208.50	137.63	201.50

**PROPRIETARY AND CONFIDENTIAL**

THE INFORMATION CONTAINED IN THIS DRAWING IS THE SOLE PROPERTY OF PLASTICAIR INC. ANY REPRODUCTION IN PART OR AS A WHOLE WITHOUT THE WRITTEN PERMISSION OF PLASTICAIR INC. IS PROHIBITED.



# 4 FANS INLINE SYSTEM



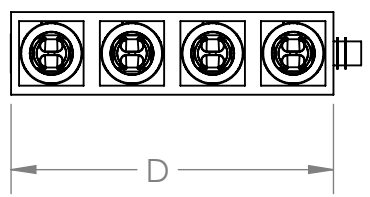
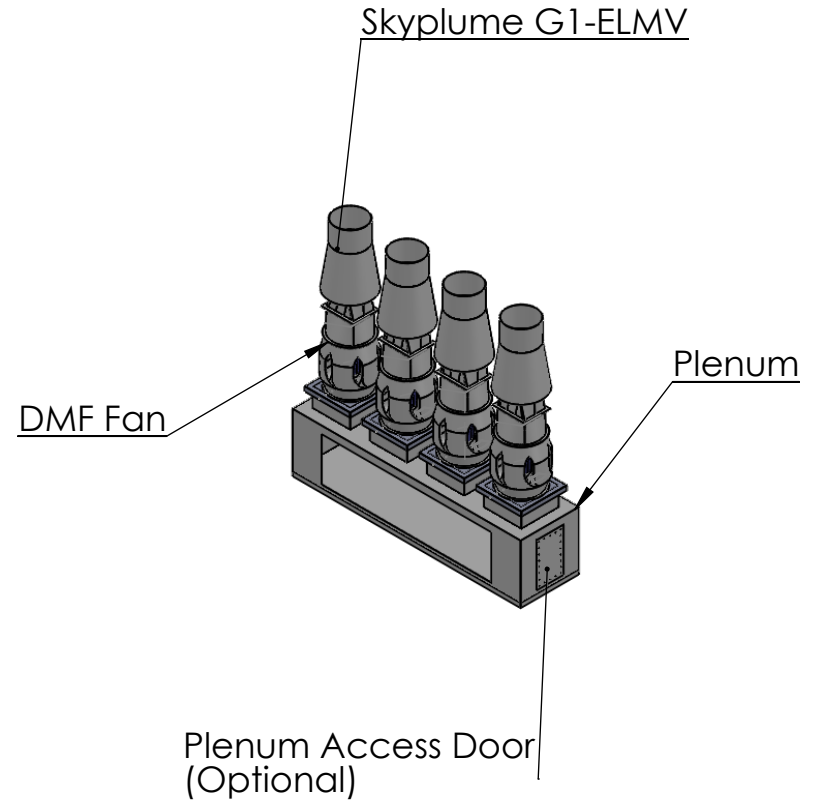
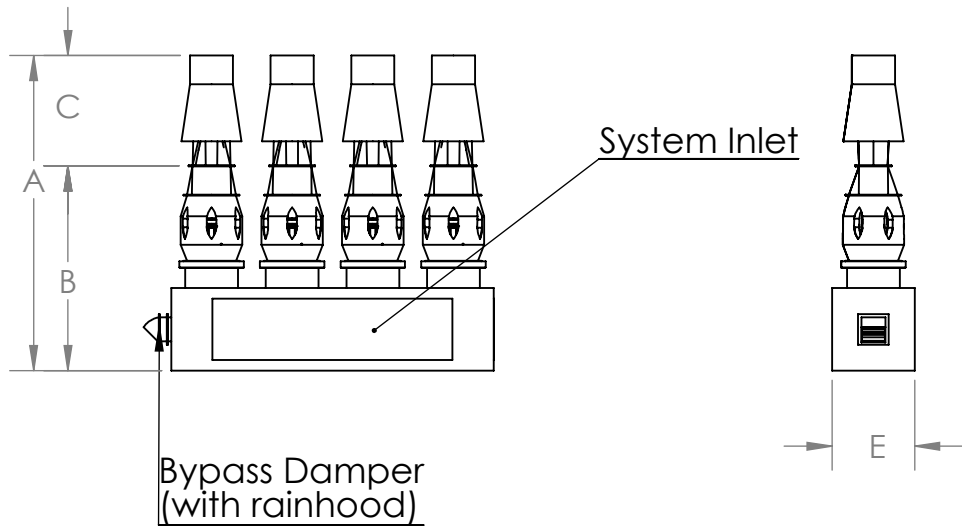
Size	A	B	C	D	E
SKYPLUME G1- ELLV- 18 - DMF 150	139.75	99.75	40.00	156.36	33.38
SKYPLUME G1- ELLV- 20 - DMF 165	147.12	102.94	44.18	163.36	36.88
SKYPLUME G1- ELLV- 22 - DMF 182	155.39	106.51	48.88	171.36	40.88
SKYPLUME G1- ELLV- 24 - DMF 182	166.82	117.94	53.31	176.36	43.38
SKYPLUME G1- ELLV- 27 - DMF 222	180.57	120.94	59.63	182.36	52.38
SKYPLUME G1- ELLV- 30 - DMF 245	191.36	125.31	66.05	188.36	55.38
SKYPLUME G1- ELLV- 33 - DMF 270	210.94	138.06	72.88	195.10	58.75
SKYPLUME G1- ELLV- 36 - DMF 300	224.56	144.31	80.25	203.60	63.00
SKYPLUME G1- ELLV- 40 - DMF 330	238.21	149.63	88.58	211.86	67.13
SKYPLUME G1- ELLV- 44 - DMF 365	263.89	166.13	97.76	221.36	71.88
SKYPLUME G1- ELLV- 49 - DMF 402	281.51	173.00	108.51	231.36	76.88
SKYPLUME G1- ELLV- 54 - DMF 445	300.63	181.44	119.19	240.86	81.63
SKYPLUME G1- ELLV- 60 - DMF 490	326.72	195.00	131.72	257.60	90.00
SKYPLUME G1- ELLV- 66 - DMF 542	350.35	204.94	145.41	279.10	100.75

**PROPRIETARY AND CONFIDENTIAL**

THE INFORMATION CONTAINED IN THIS DRAWING IS THE SOLE PROPERTY OF PLASTICAIR INC. ANY REPRODUCTION IN PART OR AS A WHOLE WITHOUT THE WRITTEN PERMISSION OF PLASTICAIR INC. IS PROHIBITED.



# 4 FANS INLINE SYSTEM

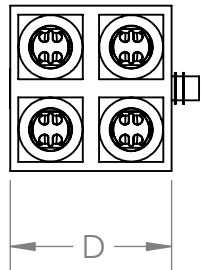
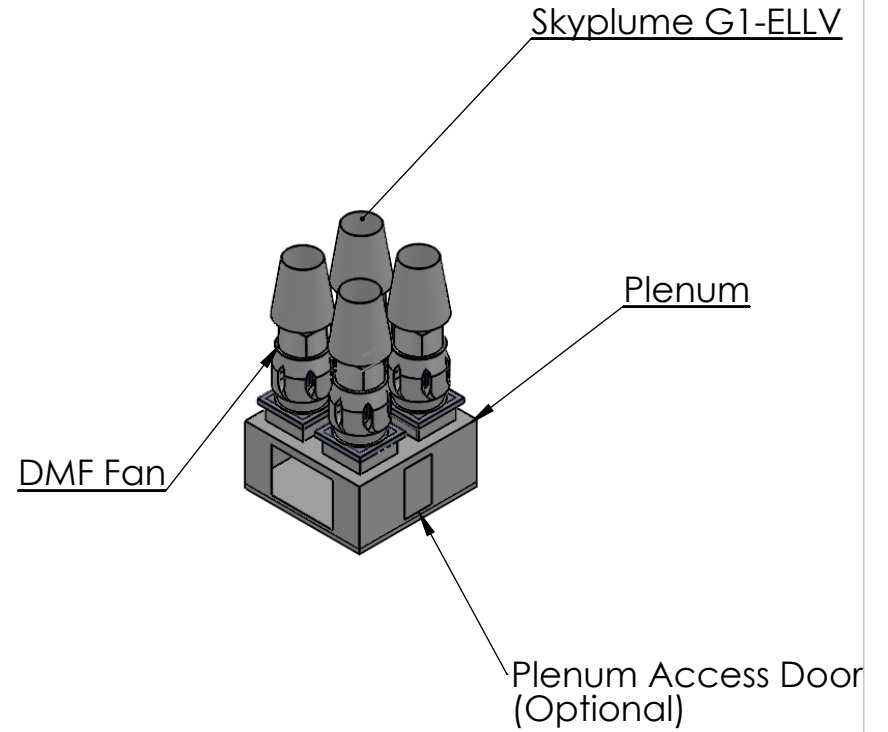
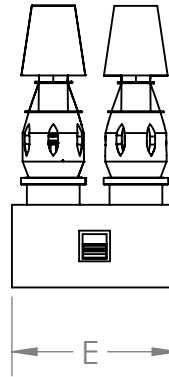
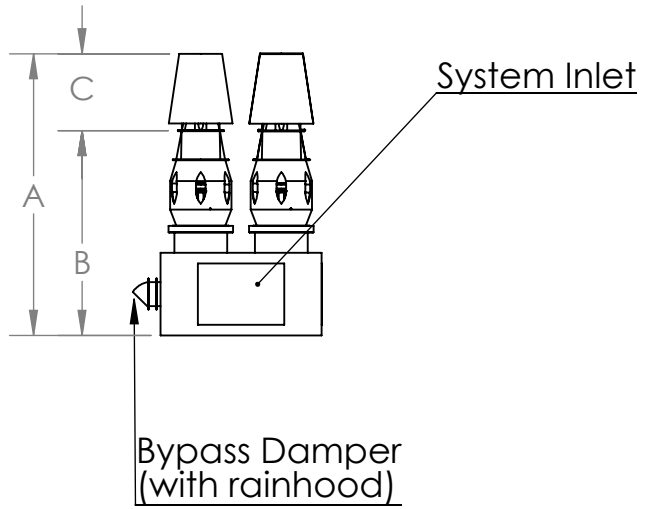


Size	A	B	C	D	E
SKYPLUME G1-ELMV- 18 - DMF 150	157.25	99.75	57.50	152.51	33.38
SKYPLUME G1- ELMV- 20 - DMF 165	166.34	102.94	63.40	159.51	36.88
SKYPLUME G1- ELMV- 22 - DMF 182	176.89	106.51	70.38	167.51	40.88
SKYPLUME G1- ELMV- 24 - DMF 200	195.44	117.94	77.50	172.51	43.38
SKYPLUME G1- ELMV- 27 - DMF 222	206.19	120.94	85.25	178.51	52.38
SKYPLUME G1- ELMV- 30 - DMF 245	220.21	125.31	94.90	184.51	55.38
SKYPLUME G1- ELMV- 33 - DMF 270	242.06	138.06	104.00	191.25	58.75
SKYPLUME G1- ELMV- 36 - DMF 300	259.56	144.31	115.25	199.75	63.00
SKYPLUME G1- ELMV- 40 - DMF 330	276.88	149.63	127.25	208.01	67.13
SKYPLUME G1- ELMV- 44 - DMF 365	306.63	166.13	140.50	217.51	71.88
SKYPLUME G1- ELMV- 49 - DMF 402	329.13	173.00	156.13	227.51	76.88
SKYPLUME G1- ELMV- 54 - DMF 445	352.44	181.44	171.00	237.01	81.63
SKYPLUME G1- ELMV- 60 - DMF 490	384.50	195.00	189.50	253.75	90.00
SKYPLUME G1- ELMV- 66 - DMF 542	413.44	204.94	208.50	275.25	100.75

**PROPRIETARY AND CONFIDENTIAL**  
 THE INFORMATION CONTAINED IN THIS DRAWING IS THE SOLE PROPERTY OF PLASTICAIR INC. ANY REPRODUCTION IN PART OR AS A WHOLE WITHOUT THE WRITTEN PERMISSION OF PLASTICAIR INC. IS PROHIBITED.



# 4 FANS OPPOSED SYSTEM



Size	A	B	C	D	E
SKYPLUME G1- ELLV- 18 - DMF 150	139.75	99.75	40.00	78.18	66.76
SKYPLUME G1- ELLV- 20 - DMF 165	147.12	102.94	44.18	81.68	73.76
SKYPLUME G1- ELLV- 22 - DMF 182	155.39	106.51	48.88	85.68	81.76
SKYPLUME G1- ELLV- 24 - DMF 182	166.82	117.94	53.31	88.18	86.76
SKYPLUME G1- ELLV- 27 - DMF 222	180.57	120.94	59.63	91.18	104.76
SKYPLUME G1- ELLV- 30 - DMF 245	191.36	125.31	66.05	94.18	110.76
SKYPLUME G1- ELLV- 33 - DMF 270	210.94	138.06	72.88	97.55	117.50
SKYPLUME G1- ELLV- 36 - DMF 300	224.56	144.31	80.25	101.80	126.00
SKYPLUME G1- ELLV- 40 - DMF 330	238.21	149.63	88.58	105.93	134.26
SKYPLUME G1- ELLV- 44 - DMF 365	263.89	166.13	97.76	110.68	143.76
SKYPLUME G1- ELLV- 49 - DMF 402	281.51	173.00	108.51	115.68	153.76
SKYPLUME G1- ELLV- 54 - DMF 445	300.63	181.44	119.19	120.43	163.26
SKYPLUME G1- ELLV- 60 - DMF 490	326.72	195.00	131.72	128.80	180.00
SKYPLUME G1- ELLV- 66 - DMF 542	350.35	204.94	145.41	139.55	201.50

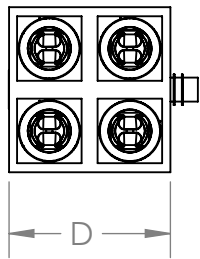
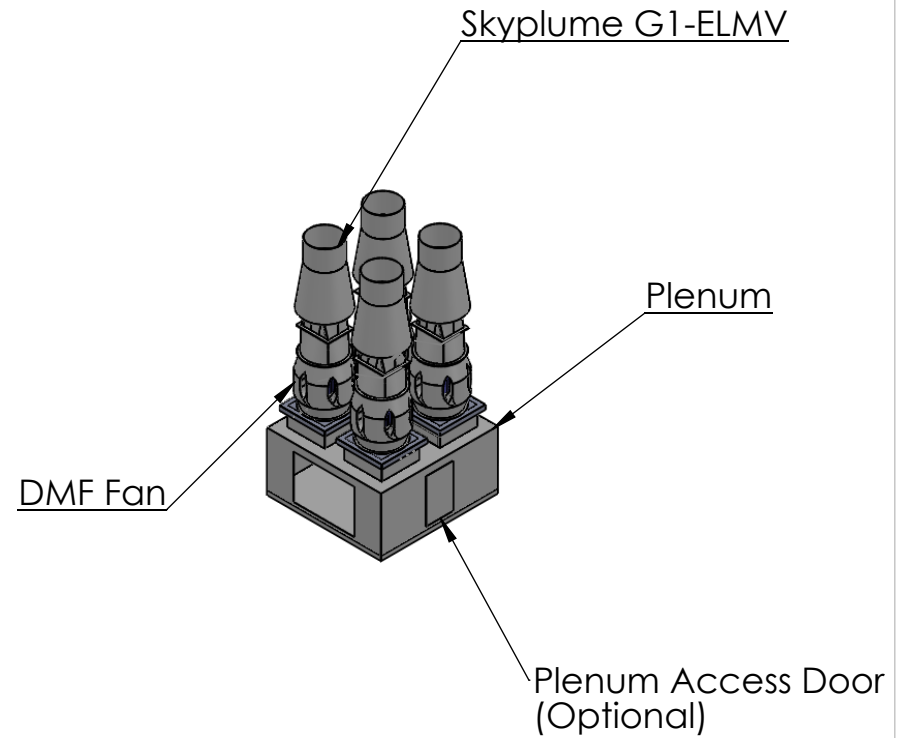
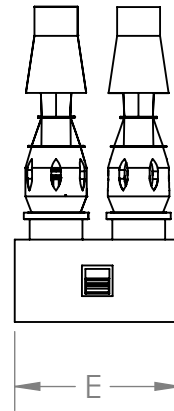
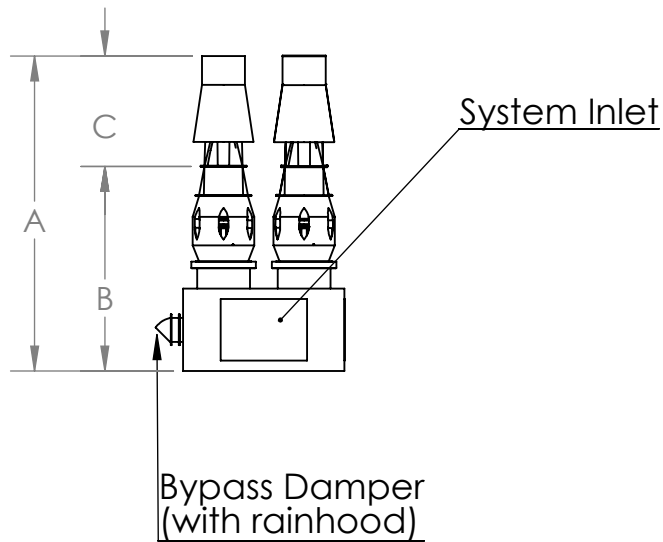
**PROPRIETARY AND CONFIDENTIAL**

THE INFORMATION CONTAINED IN THIS DRAWING IS THE SOLE PROPERTY OF PLASTICAIR INC. ANY REPRODUCTION IN PART OR AS A WHOLE WITHOUT THE WRITTEN PERMISSION OF PLASTICAIR INC. IS PROHIBITED.





# 4 FANS OPPOSED SYSTEM



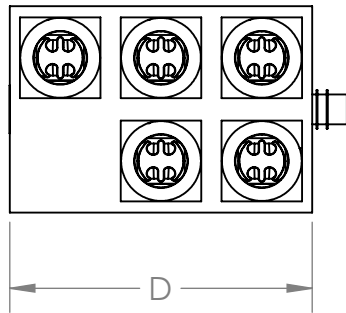
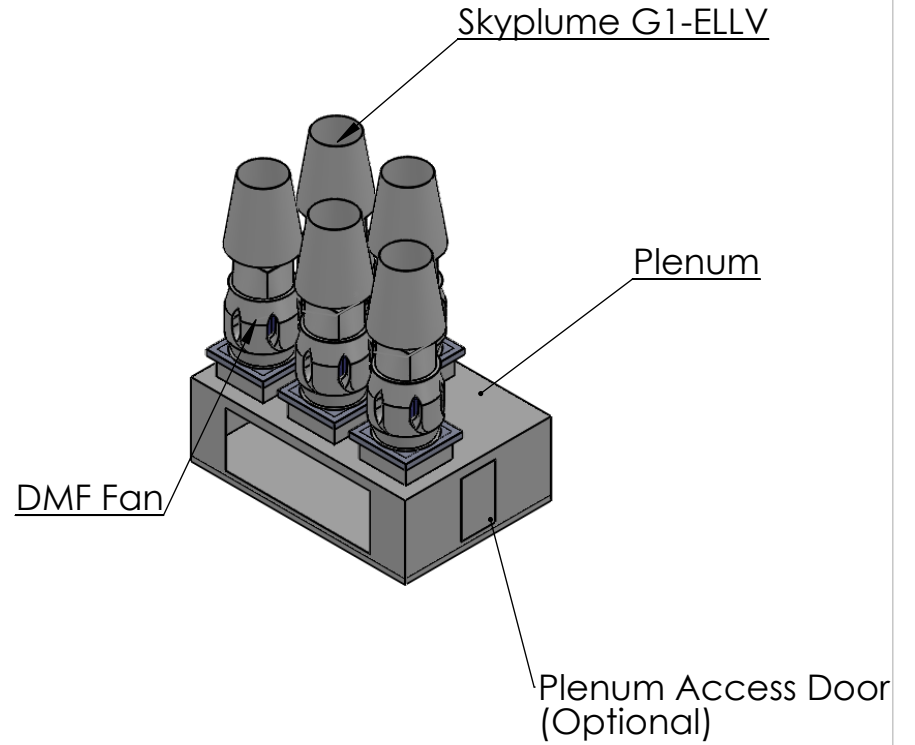
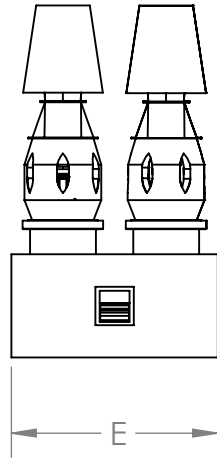
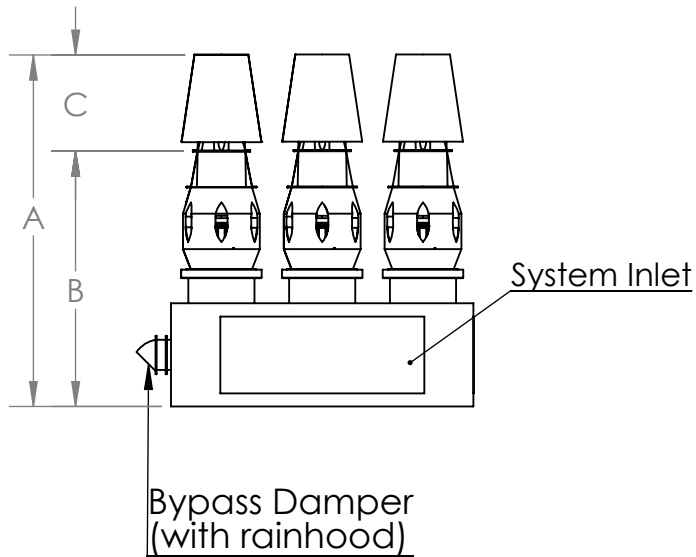
Size	A	B	C	D	E
SKYPLUME G1- ELMV- 18 - DMF 150	157.25	99.75	57.50	76.26	66.76
SKYPLUME G1- ELMV- 20 - DMF 165	166.34	102.94	63.40	79.76	73.76
SKYPLUME G1- ELMV- 22 - DMF 182	176.89	106.51	70.38	83.76	81.76
SKYPLUME G1- ELMV- 24 - DMF 200	195.44	117.94	77.50	86.26	86.76
SKYPLUME G1- ELMV- 27 - DMF 222	206.19	120.94	85.25	89.26	104.76
SKYPLUME G1- ELMV- 30 - DMF 245	220.21	125.31	94.90	92.26	110.76
SKYPLUME G1- ELMV- 33 - DMF 270	242.06	138.06	104.00	95.63	117.50
SKYPLUME G1- ELMV- 36 - DMF 300	259.56	144.31	115.25	99.88	126.00
SKYPLUME G1- ELMV- 40 - DMF 330	276.88	149.63	127.25	104.01	134.26
SKYPLUME G1- ELMV- 44 - DMF 365	306.63	166.13	140.50	108.76	143.76
SKYPLUME G1- ELMV- 49 - DMF 402	329.13	173.00	156.13	113.76	153.76
SKYPLUME G1- ELMV- 54 - DMF 445	352.44	181.44	171.00	118.51	163.26
SKYPLUME G1- ELMV- 60 - DMF 490	384.50	195.00	189.50	126.88	180.00
SKYPLUME G1-ELMV- 66 - DMF 542	413.44	204.94	208.50	137.63	201.50

**PROPRIETARY AND CONFIDENTIAL**

THE INFORMATION CONTAINED IN THIS DRAWING IS THE SOLE PROPERTY OF PLASTICAIR INC. ANY REPRODUCTION IN PART OR AS A WHOLE WITHOUT THE WRITTEN PERMISSION OF PLASTICAIR INC. IS PROHIBITED.



# 5 FANS OPPOSED SYSTEM



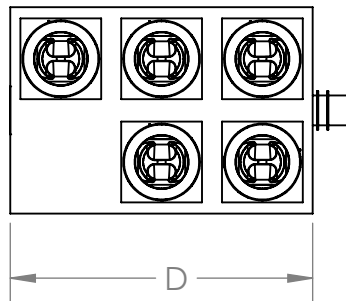
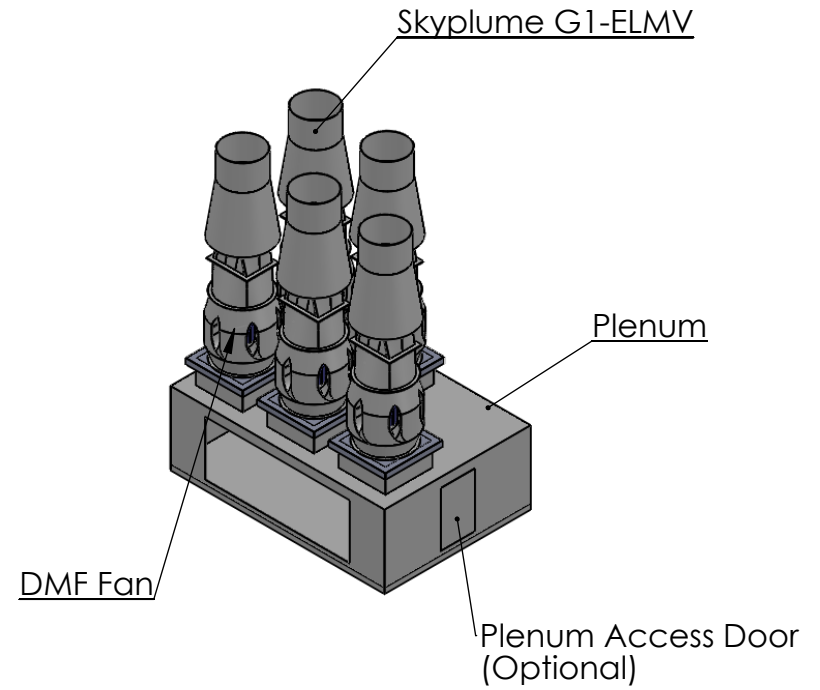
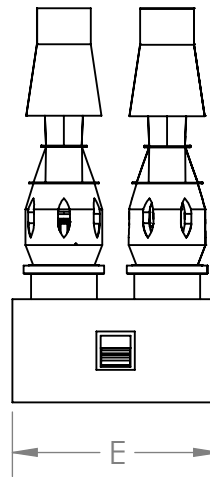
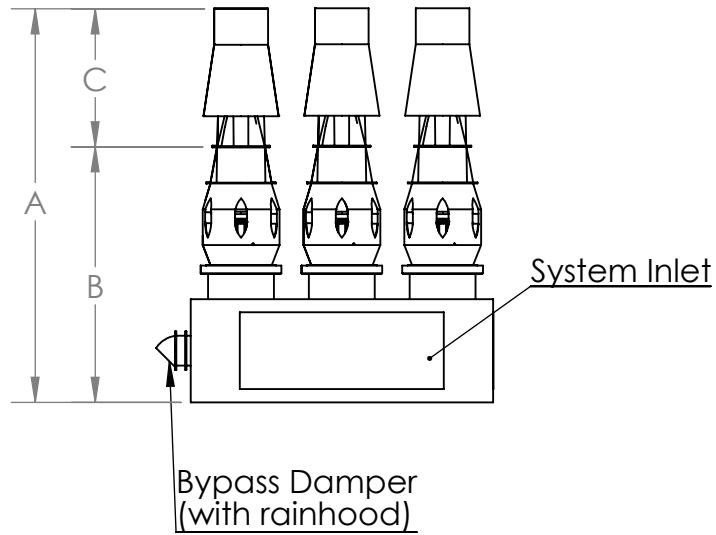
Size	A	B	C	D	E
SKYPLUME G1- ELLV- 18 - DMF 150	139.75	99.75	40.00	117.27	66.76
SKYPLUME G1- ELLV- 20 - DMF 165	147.12	102.94	44.18	122.52	73.76
SKYPLUME G1- ELLV- 22 - DMF 182	155.39	106.51	48.88	128.52	81.76
SKYPLUME G1- ELLV- 24 - DMF 182	166.82	117.94	53.31	132.27	86.76
SKYPLUME G1- ELLV- 27 - DMF 222	180.57	120.94	59.63	136.77	104.76
SKYPLUME G1- ELLV- 30 - DMF 245	191.36	125.31	66.05	141.27	110.76
SKYPLUME G1- ELLV- 33 - DMF 270	210.94	138.06	72.88	146.33	117.50
SKYPLUME G1- ELLV- 36 - DMF 300	224.56	144.31	80.25	152.70	126.00
SKYPLUME G1- ELLV- 40 - DMF 330	238.21	149.63	88.58	158.90	134.26
SKYPLUME G1- ELLV- 44 - DMF 365	263.89	166.13	97.76	166.02	143.76
SKYPLUME G1- ELLV- 49 - DMF 402	281.51	173.00	108.51	173.52	153.76
SKYPLUME G1- ELLV- 54 - DMF 445	300.63	181.44	119.19	180.65	163.26
SKYPLUME G1- ELLV- 60 - DMF 490	326.72	195.00	131.72	193.20	180.00
SKYPLUME G1- ELLV- 66 - DMF 542	350.35	204.94	145.41	209.33	201.50

PROPRIETARY AND CONFIDENTIAL

THE INFORMATION CONTAINED IN THIS DRAWING IS THE SOLE PROPERTY OF PLASTICAIR INC. ANY REPRODUCTION IN PART OR AS A WHOLE WITHOUT THE WRITTEN PERMISSION OF PLASTICAIR INC. IS PROHIBITED.



# 5 FANS OPPOSED SYSTEM



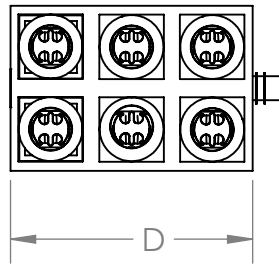
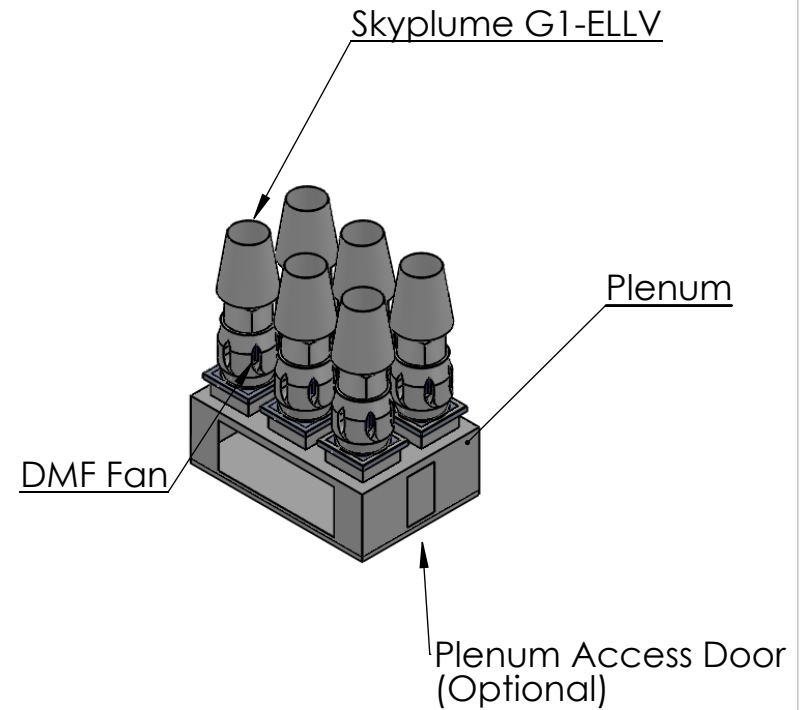
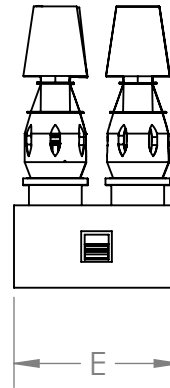
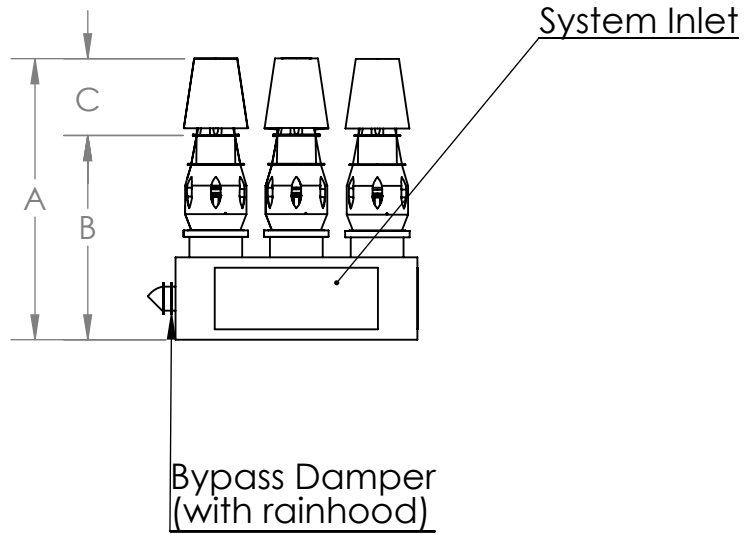
Size	A	B	C	D	E
SKYPLUME G1- ELMV- 18 - DMF 150	157.25	99.75	57.50	114.38	66.76
SKYPLUME G1- ELMV- 20 - DMF 165	166.34	102.94	63.40	119.63	73.76
SKYPLUME G1- ELMV- 22 - DMF 182	176.89	106.51	70.38	125.63	81.76
SKYPLUME G1- ELMV- 24 - DMF 200	195.44	117.94	77.50	129.38	86.76
SKYPLUME G1-ELMV- 27 - DMF 222	206.19	120.94	85.25	133.88	104.76
SKYPLUME G1- ELMV- 30 - DMF 245	220.21	125.31	94.90	138.38	110.76
SKYPLUME G1- ELMV- 33 - DMF 270	242.06	138.06	104.00	143.44	117.50
SKYPLUME G1- ELMV- 36 - DMF 300	259.56	144.31	115.25	149.81	126.00
SKYPLUME G1- ELMV- 40 - DMF 330	276.88	149.63	127.25	156.01	134.26
SKYPLUME G1- ELMV- 44 - DMF 365	306.63	166.13	140.50	163.13	143.76
SKYPLUME G1- ELMV- 49 - DMF 402	329.13	173.00	156.13	170.63	153.76
SKYPLUME G1- ELMV- 54 - DMF 445	352.44	181.44	171.00	177.76	163.26
SKYPLUME G1- ELMV- 60 - DMF 490	384.50	195.00	189.50	190.31	180.00
SKYPLUME G1- ELMV- 66 - DMF 542	413.44	204.94	208.50	206.44	201.50

PROPRIETARY AND CONFIDENTIAL

THE INFORMATION CONTAINED IN THIS DRAWING IS THE SOLE PROPERTY OF PLASTICAIR INC. ANY REPRODUCTION IN PART OR AS A WHOLE WITHOUT THE WRITTEN PERMISSION OF PLASTICAIR INC. IS PROHIBITED.



# 6 FANS OPPOSED SYSTEM



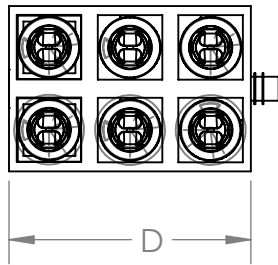
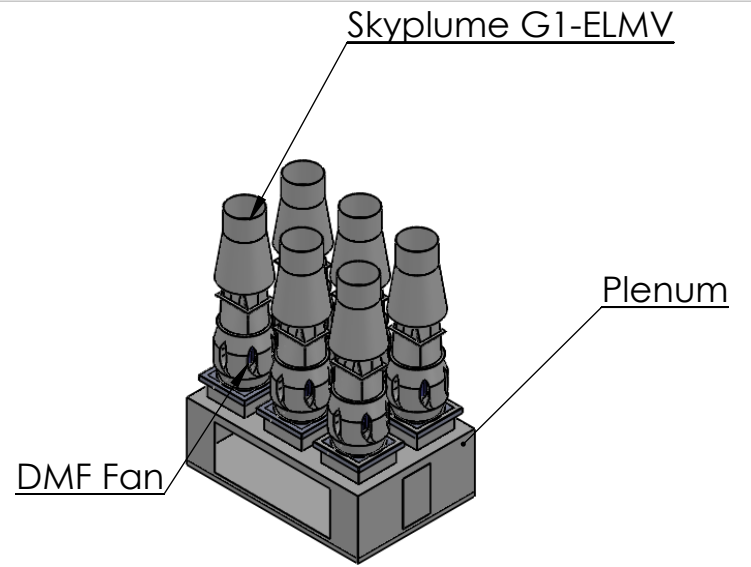
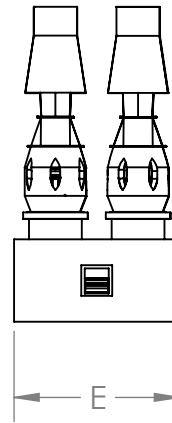
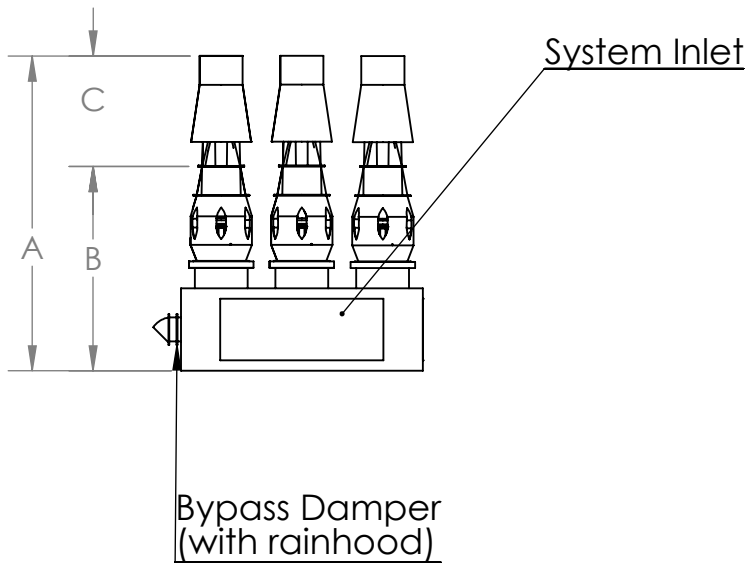
Size	A	B	C	D	E
SKYPLUME G1- ELHV- 18 /ELMV- 18 - DMF 150	139.75	99.75	40.00	117.27	66.76
SKYPLUME G1- ELHV- 20 /ELMV- 20 - DMF 165	147.12	102.94	44.18	122.52	73.76
SKYPLUME G1- ELHV- 22 /ELMV- 22 - DMF 182	155.39	106.51	48.88	128.52	81.76
SKYPLUME G1- ELHV- 24 /ELMV- 24 - DMF 200	166.82	117.94	53.31	132.27	86.76
SKYPLUME G1- ELHV- 27 /ELMV- 27 - DMF 222	180.57	120.94	59.63	136.77	104.76
SKYPLUME G1- ELHV- 30 /ELMV- 30 - DMF 245	191.36	125.31	66.05	141.27	110.76
SKYPLUME G1- ELHV- 33 /ELMV- 33 - DMF 270	210.94	138.06	72.88	146.33	117.50
SKYPLUME G1- ELHV- 36 /ELMV- 36 - DMF 300	224.56	144.31	80.25	152.70	126.00
SKYPLUME G1- ELHV- 40 /ELMV- 40 - DMF 330	238.21	149.63	88.58	158.90	134.26
SKYPLUME G1- ELHV- 44 /ELMV- 44 - DMF 365	263.89	166.13	97.76	166.02	143.76
SKYPLUME G1- ELHV- 49 /ELMV- 49 - DMF 402	281.51	173.00	108.51	173.52	153.76
SKYPLUME G1- ELMV- 54 /ELMV- 54 - DMF 445	300.63	181.44	119.19	180.65	163.26
SKYPLUME G1- ELHV- 60 /ELMV- 60 - DMF 490	326.72	195.00	131.72	193.20	180.00
SKYPLUME G1- ELMV- 66 /ELMV- 66 - DMF 542	350.35	204.94	145.41	209.33	201.50

PROPRIETARY AND CONFIDENTIAL

THE INFORMATION CONTAINED IN THIS DRAWING IS THE SOLE PROPERTY OF PLASTICAIR INC. ANY REPRODUCTION IN PART OR AS A WHOLE WITHOUT THE WRITTEN PERMISSION OF PLASTICAIR INC. IS PROHIBITED.



# 6 FANS OPPOSED SYSTEM



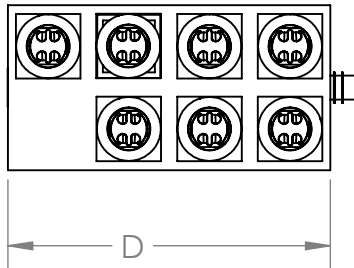
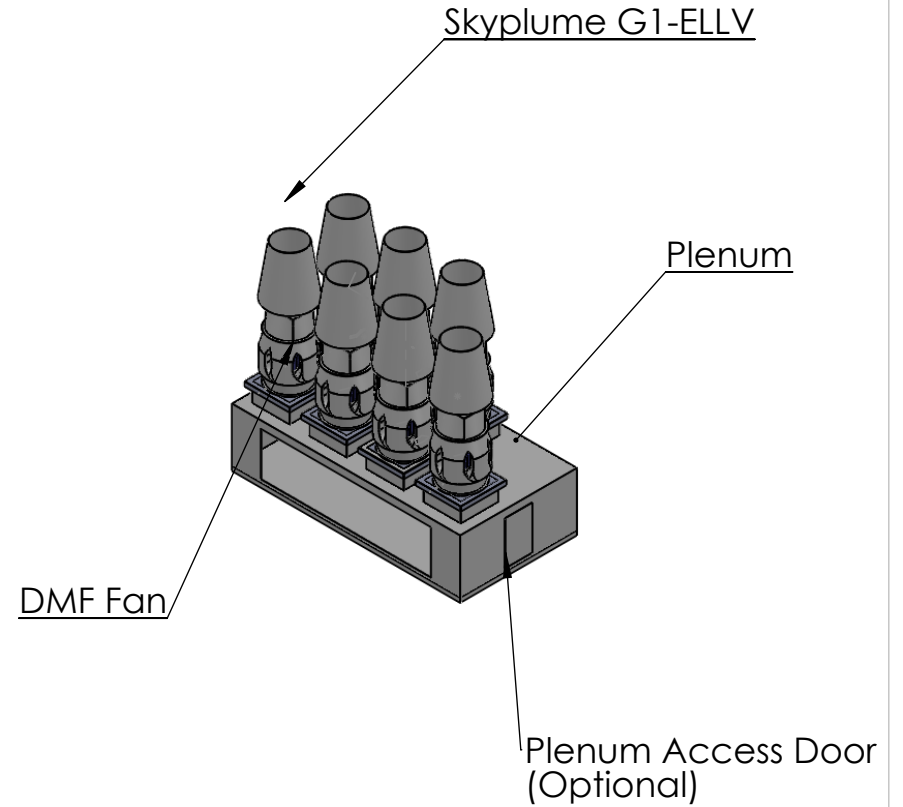
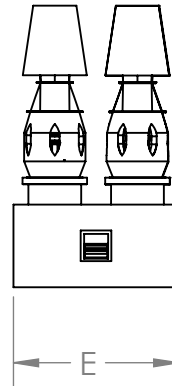
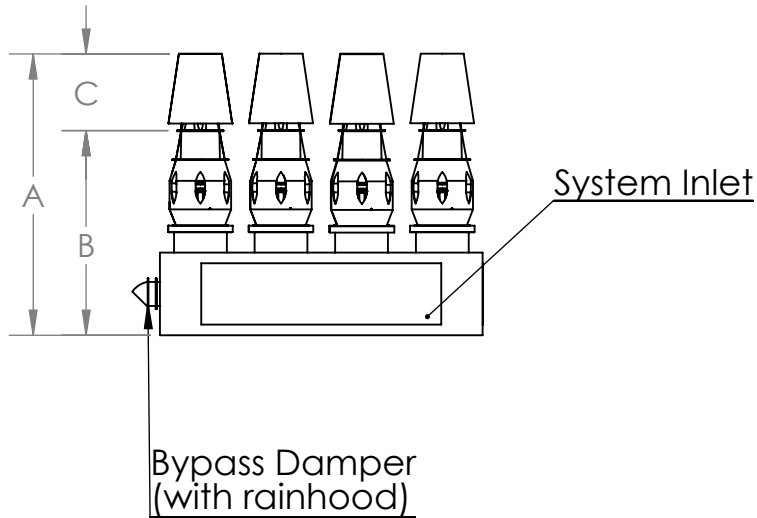
Size	A	B	C	D	E
SKYPLUME G1- ELMV- 18 - DMF 150	157.25	99.75	57.50	114.38	66.76
SKYPLUME G1- ELMV- 20 - DMF 165	166.34	102.94	63.40	119.63	73.76
SKYPLUME G1- ELMV- 22 - DMF 182	176.89	106.51	70.38	125.63	81.76
SKYPLUME G1- ELMV- 24 - DMF 200	195.44	117.94	77.50	129.38	86.76
SKYPLUME G1- ELMV- 27 - DMF 222	206.19	120.94	85.25	133.88	104.76
SKYPLUME G1- ELMV- 30 - DMF 245	220.21	125.31	94.90	138.38	110.76
SKYPLUME G1- ELMV- 33 - DMF 270	242.06	138.06	104.00	143.44	117.50
SKYPLUME G1- ELMV- 36 - DMF 300	259.56	144.31	115.25	149.81	126.00
SKYPLUME G1- ELMV- 40 - DMF 330	276.88	149.63	127.25	156.01	134.26
SKYPLUME G1- ELMV- 44 - DMF 365	306.63	166.13	140.50	163.13	143.76
SKYPLUME G1- ELMV- 49 - DMF 402	329.13	173.00	156.13	170.63	153.76
SKYPLUME G1- ELMV- 54 - DMF 445	352.44	181.44	171.00	177.76	163.26
SKYPLUME G1- ELMV- 60 - DMF 490	384.50	195.00	189.50	190.31	180.00
SKYPLUME G1- ELMV- 66 - DMF 542	413.44	204.94	208.50	206.44	201.50

PROPRIETARY AND CONFIDENTIAL

THE INFORMATION CONTAINED IN THIS DRAWING IS THE SOLE PROPERTY OF PLASTICAIR INC. ANY REPRODUCTION IN PART OR AS A WHOLE WITHOUT THE WRITTEN PERMISSION OF PLASTICAIR INC. IS PROHIBITED.



# 7 FANS OPPOSED SYSTEM



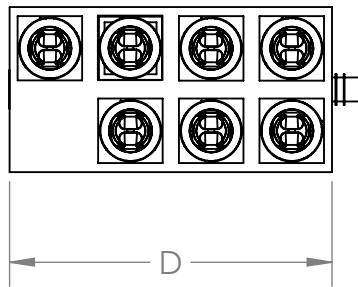
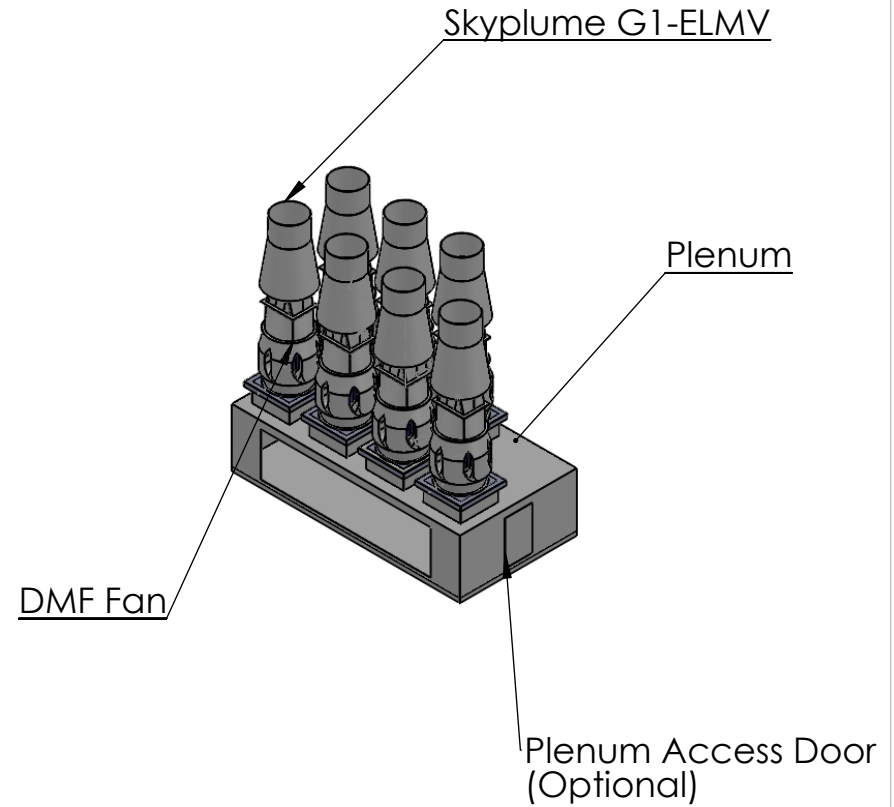
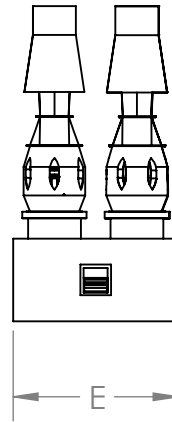
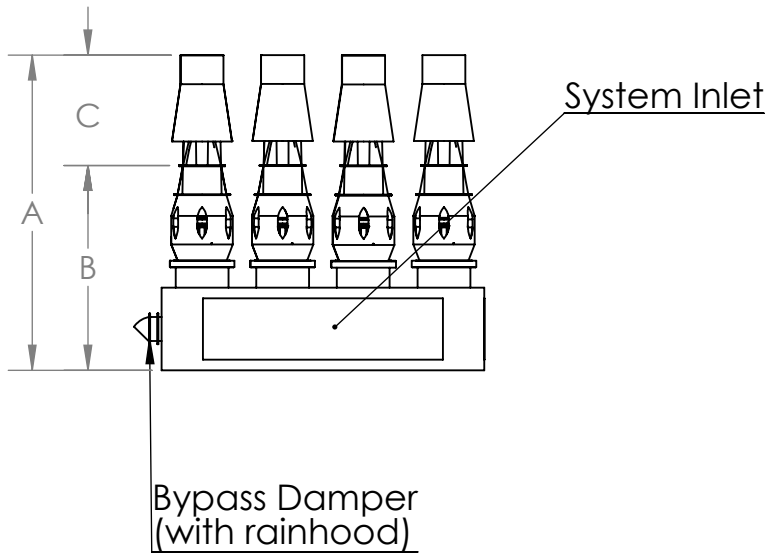
Size	A	B	C	D	E
SKYPLUME G1- ELLV- 18 - DMF 150	139.75	99.75	40.00	156.36	66.76
SKYPLUME G1- ELLV- 20 - DMF 165	147.12	102.94	44.18	163.36	73.76
SKYPLUME G1- ELLV- 22 - DMF 182	155.39	106.51	48.88	171.36	81.76
SKYPLUME G1- ELLV- 24 - DMF 182	166.82	117.94	53.31	176.36	86.76
SKYPLUME G1- ELLV- 27 - DMF 222	180.57	120.94	59.63	182.36	104.76
SKYPLUME G1- ELLV- 30 - DMF 245	191.36	125.31	66.05	188.36	110.76
SKYPLUME G1- ELLV- 33 - DMF 270	210.94	138.06	72.88	195.10	117.50
SKYPLUME G1- ELLV- 36 - DMF 300	224.56	144.31	80.25	203.60	126.00
SKYPLUME G1- ELLV- 40 - DMF 330	238.21	149.63	88.58	211.86	134.26
SKYPLUME G1- ELLV- 44 - DMF 365	263.89	166.13	97.76	221.36	143.76
SKYPLUME G1- ELLV- 49 - DMF 402	281.51	173.00	108.51	231.36	153.76
SKYPLUME G1- ELLV- 54 - DMF 445	300.63	181.44	119.19	240.86	163.26
SKYPLUME G1- ELLV- 60 - DMF 490	326.72	195.00	131.72	257.60	180.00
SKYPLUME G1- ELLV- 66 - DMF 542	350.35	204.94	145.41	279.10	201.50

PROPRIETARY AND CONFIDENTIAL

THE INFORMATION CONTAINED IN THIS DRAWING IS THE SOLE PROPERTY OF PLASTICAIR INC. ANY REPRODUCTION IN PART OR AS A WHOLE WITHOUT THE WRITTEN PERMISSION OF PLASTICAIR INC. IS PROHIBITED.



# 7 FANS OPPOSED SYSTEM



Size	A	B	C	D	E
SKYPLUME G1- ELMV- 18 - DMF 150	157.25	99.75	57.50	152.51	66.76
SKYPLUME G1- ELMV- 20 - DMF 165	166.34	102.94	63.40	159.51	73.76
SKYPLUME G1- ELMV- 22 - DMF 182	176.89	106.51	70.38	167.51	81.76
SKYPLUME G1- ELMV- 24 - DMF 200	195.44	117.94	77.50	172.51	86.76
SKYPLUME G1- ELMV- 27 - DMF 222	206.19	120.94	85.25	178.51	104.76
SKYPLUME G1- ELMV- 30 - DMF 245	220.21	125.31	94.90	184.51	110.76
SKYPLUME G1- ELMV- 33 - DMF 270	242.06	138.06	104.00	191.25	117.50
SKYPLUME G1- ELMV- 36 - DMF 300	259.56	144.31	115.25	199.75	126.00
SKYPLUME G1- ELMV- 40 - DMF 330	276.88	149.63	127.25	208.01	134.26
SKYPLUME G1- ELMV- 44 - DMF 365	306.63	166.13	140.50	217.51	143.76
SKYPLUME G1- ELMV- 49 - DMF 402	329.13	173.00	156.13	227.51	153.76
SKYPLUME G1- ELMV- 54 - DMF 445	352.44	181.44	171.00	237.01	163.26
SKYPLUME G1- ELMV- 60 - DMF 490	384.50	195.00	189.50	253.75	180.00
SKYPLUME G1- ELMV- 66 - DMF 542	413.44	204.94	208.50	275.25	201.50

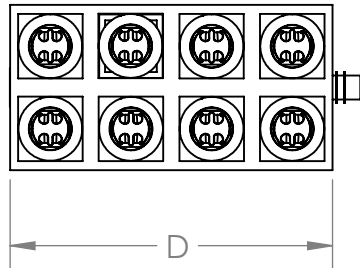
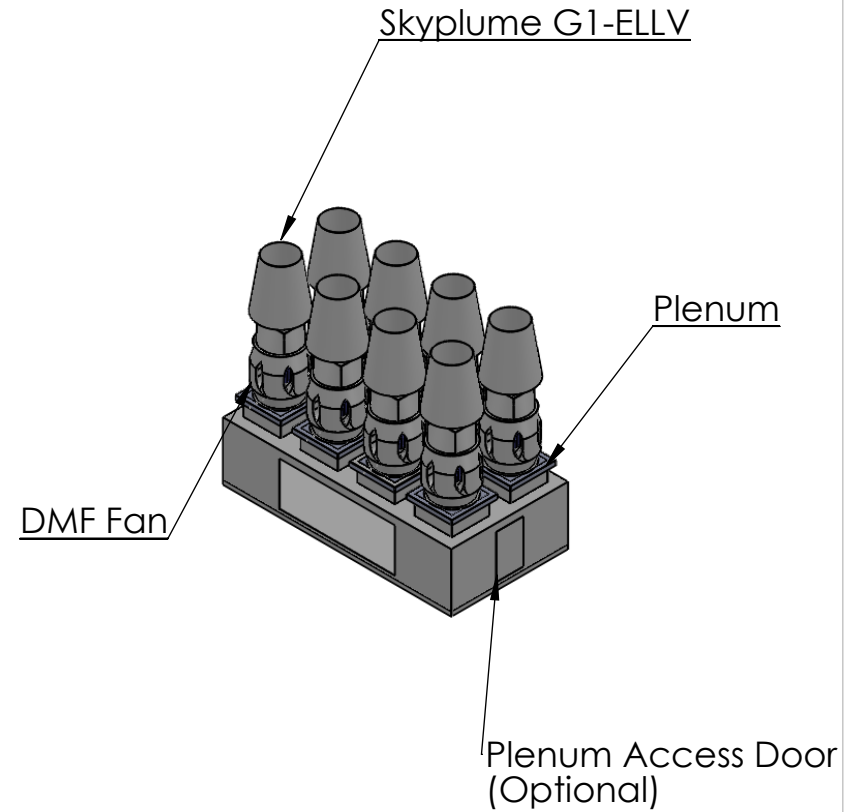
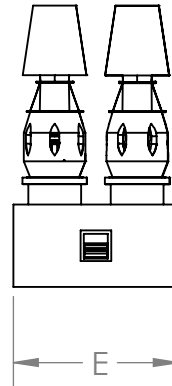
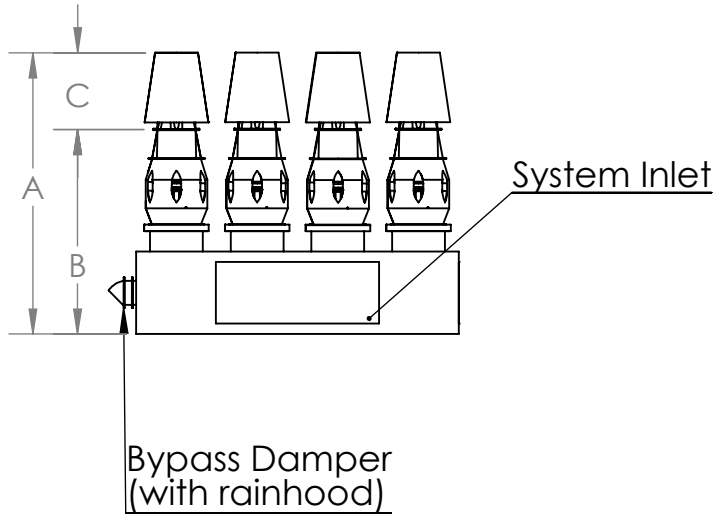
PROPRIETARY AND CONFIDENTIAL

THE INFORMATION CONTAINED IN THIS DRAWING IS THE SOLE PROPERTY OF PLASTICAIR INC. ANY REPRODUCTION IN PART OR AS A WHOLE WITHOUT THE WRITTEN PERMISSION OF PLASTICAIR INC. IS PROHIBITED.





# 8 FANS OPPOSED SYSTEM



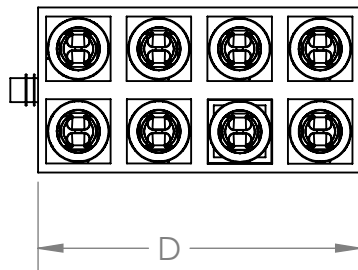
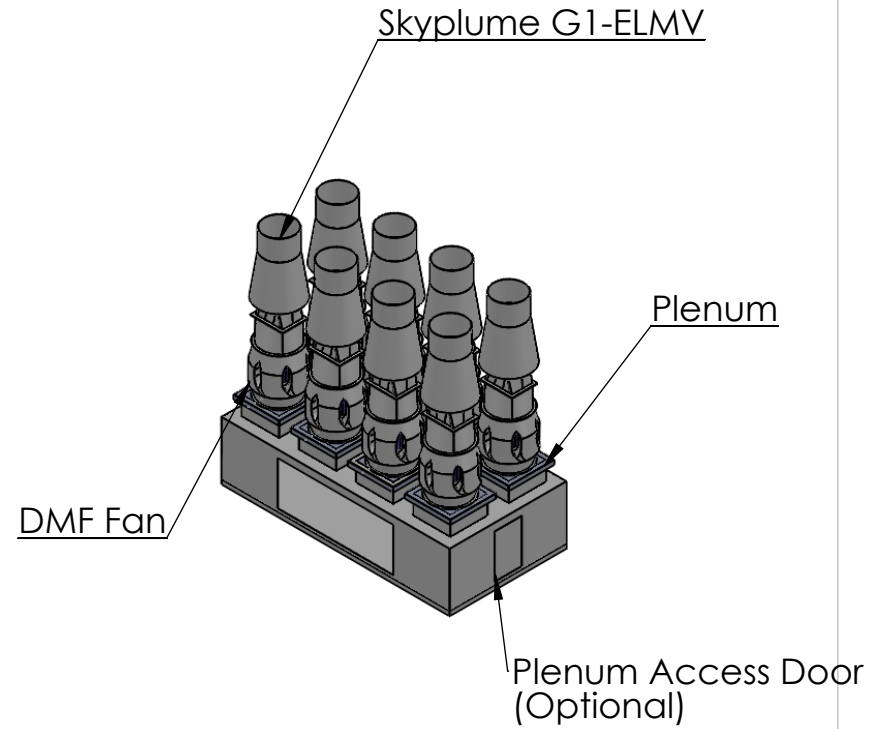
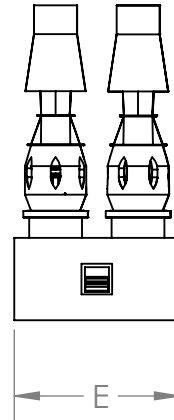
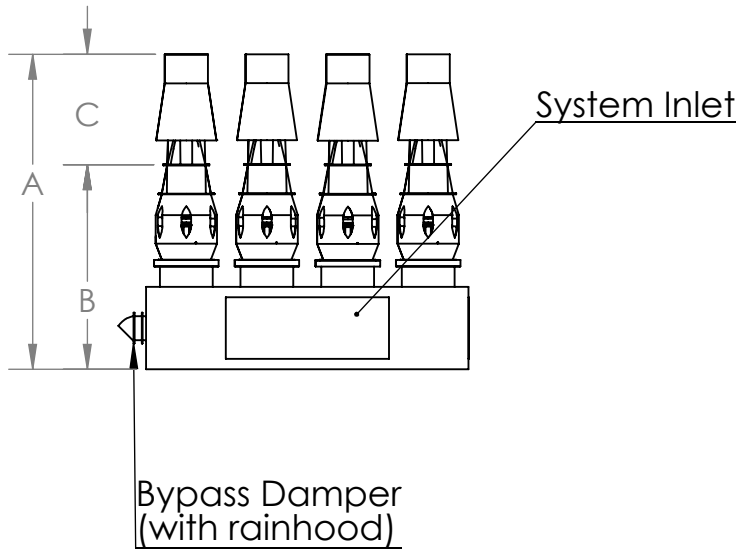
Size	A	B	C	D	E
SKYPLUME G1- ELLV- 18 - DMF 150	139.75	99.75	40.00	156.36	66.76
SKYPLUME G1- ELLV- 20 - DMF 165	147.12	102.94	44.18	163.36	73.76
SKYPLUME G1- ELLV- 22 - DMF 182	155.39	106.51	48.88	171.36	81.76
SKYPLUME G1- ELLV- 24 - DMF 182	166.82	117.94	53.31	176.36	86.76
SKYPLUME G1- ELLV- 27 - DMF 222	180.57	120.94	59.63	182.36	104.76
SKYPLUME G1- ELLV- 30 - DMF 245	191.36	125.31	66.05	188.36	110.76
SKYPLUME G1- ELLV- 33 - DMF 270	210.94	138.06	72.88	195.10	117.50
SKYPLUME G1- ELLV- 36 - DMF 300	224.56	144.31	80.25	203.60	126.00
SKYPLUME G1- ELLV- 40 - DMF 330	238.21	149.63	88.58	211.86	134.26
SKYPLUME G1- ELLV- 44 - DMF 365	263.89	166.13	97.76	221.36	143.76
SKYPLUME G1- ELLV- 49 - DMF 402	281.51	173.00	108.51	231.36	153.76
SKYPLUME G1- ELLV- 54 - DMF 445	300.63	181.44	119.19	240.86	163.26
SKYPLUME G1- ELLV- 60 - DMF 490	326.72	195.00	131.72	257.60	180.00
SKYPLUME G1- ELLV- 66 - DMF 542	350.35	204.94	145.41	279.10	201.50

PROPRIETARY AND CONFIDENTIAL

THE INFORMATION CONTAINED IN THIS DRAWING IS THE SOLE PROPERTY OF PLASTICAIR INC. ANY REPRODUCTION IN PART OR AS A WHOLE WITHOUT THE WRITTEN PERMISSION OF PLASTICAIR INC. IS PROHIBITED.



# 8 FANS OPPOSED SYSTEM



Size	A	B	C	D	E
SKYPLUME G1- ELMV- 18 - DMF 150	157.25	99.75	57.50	152.51	66.76
SKYPLUME G1- ELMV- 20 - DMF 165	166.34	102.94	63.40	159.51	73.76
SKYPLUME G1- ELMV- 22 - DMF 182	176.89	106.51	70.38	167.51	81.76
SKYPLUME G1- ELMV- 24 - DMF 200	195.44	117.94	77.50	172.51	86.76
SKYPLUME G1- ELMV- 27 - DMF 222	206.19	120.94	85.25	178.51	104.76
SKYPLUME G1- ELMV- 30 - DMF 245	220.21	125.31	94.90	184.51	110.76
SKYPLUME G1- ELMV- 33 - DMF 270	242.06	138.06	104.00	191.25	117.50
SKYPLUME G1- ELMV- 36 - DMF 300	259.56	144.31	115.25	199.75	126.00
SKYPLUME G1- ELMV- 40 - DMF 330	276.88	149.63	127.25	208.01	134.26
SKYPLUME G1- ELMV- 44 - DMF 365	306.63	166.13	140.50	217.51	143.76
SKYPLUME G1- ELMV- 49 - DMF 402	329.13	173.00	156.13	227.51	153.76
SKYPLUME G1- ELMV- 54 - DMF 445	352.44	181.44	171.00	237.01	163.26
SKYPLUME G1- ELMV- 60 - DMF 490	384.50	195.00	189.50	253.75	180.00
SKYPLUME G1- ELMV- 66 - DMF 542	413.44	204.94	208.50	275.25	201.50

PROPRIETARY AND CONFIDENTIAL

THE INFORMATION CONTAINED IN THIS DRAWING IS THE SOLE PROPERTY OF PLASTICAIR INC. ANY REPRODUCTION IN PART OR AS A WHOLE WITHOUT THE WRITTEN PERMISSION OF PLASTICAIR INC. IS PROHIBITED.





# PERFORMANCE DATA

SKYLUME G1-ELLV-22 - DMF 182			Nozzle Outlet Area = 1.934 ft <sup>2</sup>						OA = 3.90 ft <sup>2</sup>						MAX Speed = 3090 RPM						Fan Efficiency Grade: FEG 67										
Fan Inlet CFM	Nozzle outlet velocity FPM	1.0" S.P.			1.5" S.P.			2" S.P.			2.5" S.P.			3" S.P.			3.5" S.P.			4" S.P.			4.5" S.P.			5.0" S.P.			5.5" S.P.		
		RPM	BHP	E.R. (%)	RPM	BHP	E.R. (%)	RPM	BHP	E.R. (%)	RPM	BHP	E.R. (%)	RPM	BHP	E.R. (%)	RPM	BHP	E.R. (%)	RPM	BHP	E.R. (%)	RPM	BHP	E.R. (%)	RPM	BHP	E.R. (%)	RPM	BHP	E.R. (%)
5850	3024.8	2278	2.38	236.0	2380	2.90	236.0	2475	3.43	239.2	2568	3.98	239.17	2656	4.53	239.2	2739	5.08	239.2	2831	5.74	238.1	2920	6.40	238.1	3005	7.06	238.1	3086	7.72	238.1
6000	3102.4	2326	2.51	236.0	2426	3.05	236.0	2519	3.58	239.2	2611	4.15	239.17	2698	4.72	239.2	2781	5.28	239.2	2867	5.91	238.1	2955	6.59	238.1	3039	7.26	238.1	-	-	-
6150	3179.9	2374	2.65	236.0	2472	3.20	236.0	2564	3.74	236.0	2654	4.32	239.17	2740	4.90	239.2	2822	5.48	239.2	2902	6.08	238.1	2990	6.78	238.1	3074	7.47	238.1	-	-	-
6300	3257.5	2422	2.80	236.0	2518	3.36	236.0	2609	3.91	236.0	2698	4.50	239.17	2783	5.09	239.2	2864	5.69	239.2	2941	6.28	239.2	3025	6.97	238.1	-	-	-	-	-	-
6450	3335.1	2470	2.95	236.0	2565	3.52	236.0	2654	4.09	236.0	2741	4.68	239.17	2825	5.29	239.2	2906	5.90	239.2	2982	6.51	239.2	3061	7.16	238.1	-	-	-	-	-	-
6600	3412.6	2518	3.10	236.0	2612	3.69	236.0	2700	4.27	236.0	2785	4.87	239.17	2868	5.49	239.2	2948	6.11	239.2	3024	6.74	239.2	-	-	-	-	-	-	-	-	-
6750	3490.2	2567	3.26	236.0	2659	3.86	236.0	2746	4.46	236.0	2820	5.06	239.17	2911	5.70	239.2	2990	6.34	239.2	3066	6.97	239.2	-	-	-	-	-	-	-	-	-
6900	3567.7	2615	3.43	236.0	2706	4.04	236.0	2792	4.65	236.0	2874	5.27	236.0	2955	5.91	239.2	3033	6.58	239.2	-	-	-	-	-	-	-	-	-	-	-	-

SKYLUME G1-ELMV-24 - DMF 200			Nozzle OA = 1.826 ft <sup>2</sup>						OA = 4.75 ft <sup>2</sup>						MAX Speed = 2806 RPM						Fan Efficiency Grade: FEG 67										
Fan Inlet CFM	Nozzle outlet velocity FPM	1.0" S.P.			1.5" S.P.			2" S.P.			2.5" S.P.			3" S.P.			4" S.P.			5" S.P.			6" S.P.			7" S.P.					
		RPM	BHP	E.R. (%)	RPM	BHP	E.R. (%)	RPM	BHP	E.R. (%)	RPM	BHP	E.R. (%)	RPM	BHP	E.R. (%)	RPM	BHP	E.R. (%)	RPM	BHP	E.R. (%)	RPM	BHP	E.R. (%)	RPM	BHP	E.R. (%)			
5800	3176.3	1783	2.16	263.0	1886	2.61	263.0	1987	3.15	265.7	2081	3.70	265.72	2174	4.30	266.6	2364	5.67	266.6	2541	7.15	265.5	2704	8.66	265.5	-	-	-	-	-	-
6000	3285.9	1830	2.32	263.0	1931	2.79	263.0	2029	3.33	265.7	2121	3.90	265.72	2208	4.46	265.7	2396	5.80	266.6	2570	7.36	265.5	2732	8.93	265.5	-	-	-	-	-	-
6200	3395.4	1877	2.50	263.0	1976	2.98	263.0	2071	3.51	265.7	2162	4.10	265.72	2248	4.69	265.7	2429	6.09	266.6	2599	7.58	265.5	2761	9.19	265.5	-	-	-	-	-	-
6400	3504.9	1925	2.69	263.0	2021	3.18	263.0	2113	3.70	265.7	2204	4.31	265.72	2289	4.92	265.7	2461	6.30	266.6	2630	7.81	266.6	2790	9.46	265.5	-	-	-	-	-	-
6800	3724.0	2020	3.09	263.0	2114	3.61	263.0	2200	4.13	263.0	2287	4.76	265.72	2371	5.40	265.7	2527	6.72	266.6	2694	8.33	266.6	-	-	-	-	-	-	-	-	-
7200	3943.0	-	-	-	2207	4.08	263.0	2291	4.64	263.0	2372	5.23	265.72	2454	5.91	265.7	2604	7.28	265.7	2759	8.86	266.6	-	-	-	-	-	-	-	-	-
7600	4162.1	-	-	-	2301	4.60	263.0	2382	5.19	263.0	2459	5.77	263.0	2538	6.46	265.7	2686	7.90	265.7	-	-	-	-	-	-	-	-	-	-	-	-
8000	4381.2	-	-	-	2348	4.88	263.0	2475	5.78	263.0	2550	6.40	263.0	2623	7.05	265.7	2768	8.56	265.7	-	-	-	-	-	-	-	-	-	-	-	-

SKYLUME G1-ELLV-24 - DMF 200			Nozzle Outlet Area = 2.369 ft <sup>2</sup>						OA = 4.75 ft <sup>2</sup>						MAX Speed = 2806 RPM						Fan Efficiency Grade: FEG 67										
Fan Inlet CFM	Nozzle outlet velocity FPM	1.0" S.P.			1.5" S.P.			2" S.P.			2.5" S.P.			3" S.P.			3.5" S.P.			4" S.P.			4.5" S.P.			5.0" S.P.			5.5" S.P.		
		RPM	BHP	E.R. (%)	RPM	BHP	E.R. (%)	RPM	BHP	E.R. (%)	RPM	BHP	E.R. (%)	RPM	BHP	E.R. (%)	RPM	BHP	E.R. (%)	RPM	BHP	E.R. (%)	RPM	BHP	E.R. (%)	RPM	BHP	E.R. (%)	RPM	BHP	E.R. (%)
7200	3039.3	2094	38.00	236.0	2186	3.62	236.0	2272	4.27	239.2	2355	4.95	239.17	2435	5.63	239.2	2510	6.30	239.2	2590	7.08	238.1	2670	7.89	238.1	2747	8.70	238.1	-	-	-
7400	3123.7	2142	3.16	236.0	2232	3.82	236.0	2316	4.48	239.2	2398	5.18	239.17	2477	5.87	239.2	2551	6.57	239.2	2626	7.31	238.1	2705	8.14	238.1	2782	8.98	238.1	-	-	-
7600	3208.1	2190	3.35	236.0	2278	4.03	236.0	2361	4.70	239.2	2442	5.50	239.17	2519	6.13	239.2	2593	6.84	239.2	2663	7.56	239.2	2741	8.40	238.1	-	-	-	-	-	-
7800	3292.5	2238	3.55	236.0	2325	4.24	236.0	2406	4.94	236.0	2485	5.65	239.17	2562	6.39	239.2	2634	7.12	239.2	2704	7.86	239.2	2776	8.65	238.1	-	-	-	-	-	-
8000	3377.0	2286	3.76	236.0	2372	4.47	236.0	2452	5.18	236.0	2529	5.90	239.17	2604	6.66	239.2	2677	7.41	239.2	2746	8.16	239.2	-	-	-	-	-	-	-	-	-
8200	3461.4	2335	3.97	236.0	2419	4.70	236.0	2498	5.43	236.0	2573	6.16	239.17	2647	6.93	239.2	2719	7.71	239.2	2787	8.48	239.2	-	-	-	-	-	-	-	-	-
8400	3545.8	2383	4.20	236.0	2466	4.94	236.0	2544	5.69	236.0	2617	6.43	236.0	2691	7.22	239.2	2761	8.01	239.2	-	-	-	-	-	-	-	-	-	-	-	-
8600	3630.2	2432	4.43	236.0	2513	5.19	236.0	2590	5.96	236.0	266	6.72	236.0	2734	7.51	239.2	2804	8.32	239.2	-	-	-	-	-	-	-	-	-	-	-	-

SKYLUME G1-ELMV-27 - DMF 222			Nozzle Outlet Area = 2.242 ft <sup>2</sup>						OA = 5.76 ft <sup>2</sup>						MAX Speed = 2546 RPM						Fan Efficiency Grade: FEG 67													
Fan Inlet CFM	Nozzle outlet velocity FPM	1" S.P.			2" S.P.			3" S.P.			4" S.P.			5" S.P.			6" S.P.			7" S.P.			8" S.P.			9" S.P.			10" S.P.			11" S.P.		
		RPM	BHP	E.R. (%)	RPM	BHP	E.R. (%)	RPM	BHP	E.R. (%)	RPM	BHP	E.R. (%)	RPM	BHP	E.R. (%)	RPM	BHP	E.R. (%)	RPM	BHP	E.R. (%)	RPM	BHP	E.R. (%)	RPM	BHP	E.R. (%)	RPM	BHP	E.R. (%)			
6800	3033.0	1256	2.57	282.1	1406	3.82	284.8	1547	5.18	287.8	1681	6.63	287.84	1816	8.28	284.8	1940	9.93	284.8	2061	11.76	286.9	2176	13.62	286.9	2285	15.49	286.9	2388	17.44	283.5	2492	19.68	283.5
7350	3278.3	1332	3.03	282.1	1475	4.36	284.8	1603	5.75	287.8	1736	7.31	287.84	1859	8.95	284.8	1982	10.74	284.8	2095	12.52	284.8	2208	14.49	286.9	2316	16.50	286.9	2419	18.51	286.9	2516	20.54	286.9
7900	3523.6	1409	3.54	282.1	1545	4.96	284.8	1669	6.43	284.8	1791	8.04	287.84	1909	9.72	288.0	2025	11.54	284.8	2138	13.46	284.8	2243	15.38	284.8	2348	17.46	286.9	2450	19.63	286.9	-	-	-
8450	3769.0	1488	4.12	282.1	1617	5.63	282.1	1737	7.19	284.8	1847	8.80	287.84	1964	10.60	287.8	2071	12.40	287.8	2181	14.40	284.8	2286	16.46	284.8	2385	18.51	284.8	2482	20.68	286.9	-	-	-
9000	4014.3	-	-	-	1691	6.37	8282.1	1806	8.01	284.8	1912	9.69	284.76	2019	11.51	287.8	2125	13.43	287.8	2224	15.35	287.8	2329	17.53	284.8	2427	19.72	284.8	2521	21.91	284.8	-	-	-
9550	4259.6	-	-	-	1766	7.18	282.1	1876	8.90	284.8	1980	10.68	284.76	2076	12.47	287.8	2181	14.51	287.8	2279	16.55	287.8	2372	18.61	284.8	2470	20.93	284.8	-	-	-	-	-	
10100	4504.9	-	-	-	1843	8.06	282.1	1947	9.86	282.1	2048	11.74	284.76	2142	13.63	284.8	2237	15.63	287.8	2334	17.79	287.8	2425	19.94	287.8	2514	22.14	284.8	-	-	-	-	-	
10650	4750.2	-	-	-	1919	9.03	282.1	2021	10.93	282.1	2118	12.88	284.76	2210	14.87	284.8	2296	16.85	284.8	2389	19.08	287.8	2480	21.35	287.8	-	-	-	-	-	-	-		
11200	4995.5	-	-	-	1997	10.08	282.1	2095	12.08	282.1	2188	14.10	284.76	2278	16.18	284.8	2363	18.27	284.8	2446	20.42	287.8	2536	22.80	287.8	-	-	-	-	-	-	-		
11750	5240.9	-	-	-	2075	11.22	282.1	2171	13.31	282.1	2260	15.40	282.05	2348	17.59	284.8	2431	19.78	284.8	2510	21.97	284.8	-	-	-	-	-	-	-	-	-	-		

SKYLUME G1-ELLV-27 - DMF 222			Nozzle Outlet Area = 2.907 ft <sup>2</sup>						OA = 5.76 ft <sup>2</sup>						MAX Speed = 2546 RPM						Fan Efficiency Grade: FEG 75													
Fan Inlet CFM	Nozzle outlet velocity FPM	1.0" S.P.			2" S.P.			3" S.P.			4" S.P.			5" S.P.			6" S.P.			7" S.P.			8" S.P.			9" S.P.			10" S.P.			" S.P.		
		RPM	BHP	E.R. (%)	RPM	BHP	E.R. (%)	RPM	BHP	E.R																								

# PERFORMANCE DATA

SKYPLUME G1-ELMV-30 - DMF 245				Nozzle Outlet Area = 2.738 ft <sup>2</sup>												OA = 7.07 ft <sup>2</sup>						MAX Speed = 2292 RPM						Fan Efficiency Grade: FEG 77						
Fan Inlet CFM	Nozzle outlet velocity FPM	1" S.P.			2" S.P.			3" S.P.			4" S.P.			5" S.P.			6" S.P.			7" S.P.			8" S.P.			9" S.P.			10" S.P.			11" S.P.		
		RPM	BHP	E.R. (%)	RPM	BHP	E.R. (%)	RPM	BHP	E.R. (%)	RPM	BHP	E.R. (%)	RPM	BHP	E.R. (%)	RPM	BHP	E.R. (%)	RPM	BHP	E.R. (%)	RPM	BHP	E.R. (%)	RPM	BHP	E.R. (%)	RPM	BHP	E.R. (%)			
8400	3067.9	1131	3.18	282.1	1265	4.72	284.8	1392	6.40	287.8	1513	8.19	287.84	1635	10.23	284.8	1746	12.27	284.8	1855	14.52	286.9	1959	16.83	286.9	2056	19.13	286.87	2150	21.54	283.46	2243	24.30	283.46
9200	3360.1	1212	3.85	282.1	1339	5.52	284.8	1453	7.23	284.8	1571	9.19	287.84	1681	11.20	284.8	1791	13.44	284.8	1893	15.68	284.8	1993	18.07	286.9	2090	20.60	286.87	2182	23.13	286.87	-	-	-
10000	3652.3	1294	4.63	282.1	1413	6.41	284.8	1524	8.28	284.8	1630	10.26	287.84	1736	12.39	287.8	1837	14.61	284.8	1938	17.04	284.8	2033	19.48	284.8	2124	21.97	286.87	2216	24.72	286.87	-	-	-
10800	3944.5	1377	5.51	282.1	1491	7.43	282.1	1597	9.42	284.8	1693	11.43	284.76	1794	13.69	287.8	1890	15.99	287.8	1984	18.41	284.8	2078	21.04	284.8	2167	23.66	284.82	2252	26.29	284.82	-	-	-
11600	4236.7	-	-	-	1571	8.57	282.1	1670	10.68	284.8	1764	12.84	284.76	1854	15.06	287.8	1949	17.54	287.8	2037	20.01	287.8	2124	22.60	284.8	2212	25.42	284.82	-	-	-	-	-	
12400	4528.9	-	-	-	1651	9.84	282.1	1746	12.05	284.8	1837	14.36	284.76	1922	16.67	284.8	2008	19.16	287.8	2095	21.80	287.8	2178	24.44	287.8	2258	27.18	284.82	-	-	-	-	-	
13200	4821.0	-	-	-	1733	11.24	282.1	1824	13.60	282.1	1911	16.01	284.76	1993	18.47	284.8	2071	20.94	284.8	2154	23.67	287.8	2236	26.49	287.8	-	-	-	-	-	-	-		
14000	5113.2	-	-	-	1815	12.79	282.1	1903	15.29	282.1	1983	17.80	284.76	2066	20.41	284.8	2142	23.02	284.8	2214	25.64	287.8	-	-	-	-	-	-	-	-	-	-	-	
14800	5405.4	-	-	-	1898	14.49	282.1	1983	17.13	282.1	2063	19.77	282.05	2140	22.49	284.8	2215	25.25	284.8	2285	28.01	284.8	-	-	-	-	-	-	-	-	-	-	-	
15600	5697.6	-	-	-	1982	16.35	282.1	2064	19.13	282.1	2141	21.91	282.05	2215	24.73	284.8	2288	27.63	284.8	-	-	-	-	-	-	-	-	-	-	-	-	-	-	

SKYPLUME G1-ELLV-30 - DMF 245				Nozzle Outlet Area = 3.551 ft <sup>2</sup>												OA = 7.07 ft <sup>2</sup>						MAX Speed = 2292 RPM						Fan Efficiency Grade: FEG 75						
Fan Inlet CFM	Nozzle outlet velocity FPM	1.0" S.P.			2" S.P.			3" S.P.			4" S.P.			5" S.P.			6" S.P.			7" S.P.			8" S.P.			9" S.P.			10" S.P.			S.P.		
		RPM	BHP	E.R. (%)	RPM	BHP	E.R. (%)	RPM	BHP	E.R. (%)	RPM	BHP	E.R. (%)	RPM	BHP	E.R. (%)	RPM	BHP	E.R. (%)	RPM	BHP	E.R. (%)	RPM	BHP	E.R. (%)	RPM	BHP	E.R. (%)	RPM	BHP	E.R. (%)			
10700	3013.2	1290	4.40	238.2	1422	6.24	238.4	1527	8.12	238.42	1631	10.13	239.4	1728	12.17	239.4	1826	14.41	239.6	1922	16.78	239.6	2012	19.15	239.6	2103.6	21.75	239.9	2195	24.52	239.9	-	-	-
11400	3210.4	1355	5.06	238.2	1486	7.01	238.4	1588	9.01	238.42	1686	11.08	239.4	1781	13.25	239.4	1869	15.42	239.4	1963	17.91	239.6	2053	20.43	239.6	2137.2	22.96	239.6	2222	25.67	239.9	-	-	-
12100	3407.5	1420	5.78	238.2	1551	7.85	238.4	1651	9.97	238.42	1741	12.09	239.4	1835	14.39	239.4	1921	16.69	239.4	2004	19.04	239.6	2093	21.72	239.6	2177.4	24.40	239.6	2258	27.08	239.6	-	-	-
12800	3604.6	1486	6.59	238.2	1614	8.77	238.2	1714	11.00	238.42	1802	13.24	238.4	1889	15.59	239.4	1975	18.02	239.4	2055	20.90	239.4	2135	23.01	239.6	2218.2	25.85	239.6	-	-	-	-	-	
13500	3801.7	-	-	-	1677	9.77	238.2	1778	12.11	238.42	1864	14.47	238.4	1944	16.84	239.4	2029	19.41	239.4	2108	21.98	239.4	2183	24.54	239.4	2259.5	27.30	239.6	-	-	-	-	-	
14200	3998.9	-	-	-	1740	10.86	238.2	1842	13.30	238.42	1926	15.78	238.4	2005	18.26	238.4	2083	20.87	239.4	2162	23.57	239.4	2236	26.27	239.4	-	-	-	-	-	-	-		
14900	4196.0	-	-	-	1804	12.03	238.2	1908	14.57	238.42	1990	17.18	238.4	2067	19.78	238.4	2139	22.39	238.4	2216	25.22	239.4	2289	28.05	239.4	-	-	-	-	-	-	-		
15600	4393.1	-	-	-	1868	13.29	238.2	1970	15.95	238.17	2054	18.66	238.4	2129	21.39	238.42	2200	24.12	238.4	2271	26.95	239.4	-	-	-	-	-	-	-	-	-	-		
15950	4491.7	-	-	-	1900	13.96	238.2	2001	16.68	238.17	2086	19.44	238.4	2160	22.23	238.4	2231	25.02	238.4	-	-	-	-	-	-	-	-	-	-	-	-	-		
16300	4590.3	-	-	-	1933	14.66	238.2	2032	17.43	238.17	2118	20.24	238.4	2192	23.10	238.4	2262	25.95	238.4	-	-	-	-	-	-	-	-	-	-	-	-	-		

SKYPLUME G1-ELMV-33 - DMF 270				Nozzle Outlet Area = 3.376 ft <sup>2</sup>												OA = 8.51 ft <sup>2</sup>						MAX Speed = 2083 RPM						Fan Efficiency Grade: FEG 67						
Fan Inlet CFM	Nozzle outlet velocity FPM	1" S.P.			2" S.P.			3" S.P.			4" S.P.			5" S.P.			6" S.P.			7" S.P.			8" S.P.			9" S.P.			10" S.P.			11" S.P.		
		RPM	BHP	E.R. (%)	RPM	BHP	E.R. (%)	RPM	BHP	E.R. (%)	RPM	BHP	E.R. (%)	RPM	BHP	E.R. (%)	RPM	BHP	E.R. (%)	RPM	BHP	E.R. (%)	RPM	BHP	E.R. (%)	RPM	BHP	E.R. (%)	RPM	BHP	E.R. (%)			
10200	3021.3	1030	3.88	282.1	1153	5.75	284.8	1268	7.78	287.8	1378	9.95	287.84	1488	12.42	284.8	1589	14.90	284.8	1688	17.62	286.9	1782	20.42	286.9	1871	23.22	286.9	1955.1	26.1	283.5	2039.6	29.45	283.5
11200	3317.5	1107	4.72	282.1	1222	6.75	284.8	1325	8.84	284.8	1432	11.21	287.84	1531	13.64	284.8	1631	16.36	284.8	1724	19.09	284.8	1814	21.97	286.9	1902	25.05	286.9	1985.7	28.12	286.9	2065.5	31.2	286.9
12200	3613.7	1184	5.70	282.1	1292	7.88	284.8	1392	10.15	284.8	1488	12.55	287.84	1584	15.15	287.8	1674	17.83	284.8	1766	20.79	284.8	1852	23.76	284.8	1934	26.75	286.9	2017.4	30.1	286.9	-	-	-
13200	3910.0	1262	6.82	282.1	1366	9.17	282.1	1460	11.60	284.8	1548	14.06	284.76	1639	16.79	287.8	1726	19.60	287.8	1809	22.51	284.8	1895	25.71	284.8	1976	28.92	284.8	2052.3	32.13	284.8	-	-	-
14200	4206.2	-	-	-	1440	10.62	282.1	1530	13.19	284.8	1615	15.84	284.76	1695	18.52	287.8	1781	21.54	287.8	1861	24.57	287.8	1938	27.67	284.8	2018	31.12	284.8	-	-	-	-	-	
15200	4502.4	-	-	-	1516	12.24	282.1	1601	14.94	282.1	1684	17.77	284.76	1760	20.60	284.8	1836	23.59	287.8	1916	26.83	287.8	1990	30.07	287.8	2062	33.32	284.8	-	-	-	-	-	
16200	4798.6	-	-	-	1593	14.03	282.1	1679	16.92	282.1	1753	19.87	284.76	1828	22.89	284.8	1898	25.91	284.8	1971	29.19	287.8	2045	32.65	287.8	-	-	-	-	-	-	-		
17200	5094.8	-	-	-	1670	16.01	282.1	1750	19.08	282.1	1823	22.15	284.76	1896	25.36	284.8	1965	28.56	284.8	2030	31.77	284.8	-	-	-	-	-	-	-	-	-	-		
18200	5391.0	-	-	-	1749	18.19	282.1	1825	21.44	282.1	1897	24.68	282.05	1966	28.01	284.8	2033	31.40	284.8	-	-	-	-	-	-	-	-	-	-	-	-	-		
19200	5687.2	-	-	-	1828	20.31	282.1	1902	24.01	282.1	1971	27.43	282.05	2037	30.87	284.8	-	-	-	-	-	-	-	-	-	-	-	-	-	-	-	-		

SKYPLUME G1-ELLV-33 - DMF 270				Nozzle Outlet Area = 4.379 ft <sup>2</sup>												OA = 8.51 ft <sup>2</sup>						MAX Speed = 2083 RPM						Fan Efficiency Grade: FEG 71						
Fan Inlet CFM	Nozzle outlet velocity FPM	1.0" S.P.			2" S.P.			3" S.P.			4" S.P.			5" S.P.			6" S.P.			7" S.P.			8" S.P.			9" S.P.			10" S.P.			S.P.		
		RPM	BHP	E.R. (%)	RPM	BHP	E.R. (%)	RPM	BHP	E.R. (%)	RPM	BHP	E.R. (%)	RPM	BHP	E.R. (%)	RPM	BHP	E.R. (%)	RPM	BHP	E.R. (%)	RPM	BHP	E.R. (%)	RPM	BHP	E.R. (%)	RPM	BHP	E.R. (%)			
13500	3082.9	1211	5.83	238.2	1331	8.15	238.4	1424	10.51	238.4	1515	13.01	239.42	1602	15.57	239.4	1684	18.21	239.6	1772	21.20	239.6	1853	24.19	239.6	1930	27.18	239.6	2012	30.59	239.9	-	-	-
14200	3242.7	1260	6.53	238.2	1379	8.96	238.4	1471	11.44	238.4	1557	13.99	239.42	1642	16.69	239.4	1722	19.39	239.4	1802	22.33	239.6	1884	25.47	239.6	1960	28.62	239.6	2033	31.76	239.6	-	-	-
14900	3402.6	1310	7.29	238	1428	9.83	238.2	1518	12.43	238.4	1599	15.04	238.42	1683	17.85	239.42	1761	2																

# PERFORMANCE DATA

SKYPLUME G1-ELMV-36 - DMF 300				Nozzle Outlet Area = 4.053 ft <sup>2</sup>						OA = 10.44 ft <sup>2</sup>						MAX Speed = 1884 RPM						Fan Efficiency Grade: FEG 77												
Fan Inlet CFM	Nozzle outlet velocity FPM	1" S.P.			2" S.P.			3" S.P.			4" S.P.			5" S.P.			6" S.P.			7" S.P.			8" S.P.			9" S.P.			10" S.P.			11" S.P.		
		RPM	BHP	E.R. (%)	RPM	BHP	E.R. (%)	RPM	BHP	E.R. (%)	RPM	BHP	E.R. (%)	RPM	BHP	E.R. (%)	RPM	BHP	E.R. (%)	RPM	BHP	E.R. (%)	RPM	BHP	E.R. (%)	RPM	BHP	E.R. (%)	RPM	BHP	E.R. (%)			
12500	3084.1	933	4.76	282.1	1043	7.05	284.8	1147	9.54	287.8	1247	12.20	287.84	1346	15.22	284.8	1437	18.26	284.8	1526	21.58	286.9	1612	25.02	286.9	1692	28.45	286.9	1768	31.95	283.5	1844	36.06	283.5
13700	3380.2	1000	5.78	282.1	1105	8.26	284.8	1198	10.81	284.8	1295	13.71	287.84	1384	16.68	284.8	1475	20.01	284.8	1558	23.35	284.8	1640	26.88	286.9	1720	30.64	286.9	1795	34.40	286.9	1867	38.16	286.9
14900	3676.3	1069	6.95	282.1	1167	9.62	284.8	1257	12.38	284.8	1344	15.32	287.84	1431	18.49	287.8	1513	21.77	284.8	1596	25.40	284.8	1674	29.02	284.8	1748	32.68	286.9	1823	36.77	286.9	-	-	-
16100	3972.4	1139	8.28	282.1	1232	11.15	282.1	1318	14.11	284.8	1397	17.12	284.76	1479	20.45	287.8	1558	23.88	287.8	1634	27.45	284.8	1712	31.36	284.8	1785	35.28	284.8	1854	39.19	284.8	-	-	-
17300	4268.4	-	-	-	1298	12.88	282.1	1380	16.01	284.8	1457	19.24	284.76	1529	22.53	287.8	1607	26.21	287.8	1679	29.90	287.8	1750	33.71	284.8	1822	37.91	284.8	-	-	-	-	-	
18500	4564.5	-	-	-	1365	14.81	282.1	1442	18.10	282.1	1517	21.55	284.76	1587	25.00	284.8	1656	28.66	287.8	1728	32.60	287.8	1796	36.54	287.8	1861	40.55	284.8	-	-	-	-	-	
19700	4860.6	-	-	-	1434	16.94	282.1	1508	20.45	282.1	1579	24.05	284.76	1647	27.72	284.8	1710	31.40	284.8	1777	35.43	287.8	1844	39.63	287.8	-	-	-	-	-	-	-	-	
20900	5156.7	-	-	-	1502	19.30	282.1	1574	23.02	282.1	1641	26.76	284.76	1707	30.66	284.8	1770	34.56	284.8	1829	38.45	284.8	-	-	-	-	-	-	-	-	-	-	-	
22100	5452.8	-	-	-	1641	25.82	282.1	1641	25.82	282.1	1706	29.76	282.05	1769	33.82	284.8	1830	37.94	284.8	-	-	-	-	-	-	-	-	-	-	-	-	-	-	-
23300	5748.8	-	-	-	1708	28.87	282.1	1708	28.87	282.1	1771	33.02	282.05	1831	37.21	284.8	-	-	-	-	-	-	-	-	-	-	-	-	-	-	-	-	-	-

SKYPLUME G1-ELLV-36 - DMF 300				Nozzle Outlet Area = 5.257 ft <sup>2</sup>						OA = 10.44 ft <sup>2</sup>						MAX Speed = 1884 RPM						Fan Efficiency Grade: FEG 71												
Fan Inlet CFM	Nozzle outlet velocity FPM	1.0" S.P.			2" S.P.			3" S.P.			4" S.P.			5" S.P.			6" S.P.			7" S.P.			8" S.P.			9" S.P.			10" S.P.			S.P.		
		RPM	BHP	E.R. (%)	RPM	BHP	E.R. (%)	RPM	BHP	E.R. (%)	RPM	BHP	E.R. (%)	RPM	BHP	E.R. (%)	RPM	BHP	E.R. (%)	RPM	BHP	E.R. (%)	RPM	BHP	E.R. (%)	RPM	BHP	E.R. (%)	RPM	BHP	E.R. (%)			
15800	3005.5	1059	6.47	238.2	1167	9.20	238.4	1253	11.97	238.4	1339	14.95	239.4	1419	17.95	239.4	1499	21.28	239.6	1579	24.78	239.6	1653	28.28	239.6	1728	32.14	239.9	1803	36.24	239.9	-	-	-
16900	3214.8	1115	7.51	238.2	1223	10.41	238.4	1307	13.36	238.4	1387	16.44	239.4	1465	19.66	239.4	1537	22.87	239.4	1614	26.55	239.6	1688	30.29	239.6	1757	34.04	239.6	1827	38.03	239.9	-	-	-
18000	3424.0	1172	8.66	238.2	1280	11.73	238.4	1361	14.88	238.4	1435	18.03	238.4	1512	21.45	239.4	1583	24.87	239.4	1650	28.33	239.6	1723	32.32	239.6	1793	36.3	239.6	-	-	-	-	-	
19100	3633.3	1230	9.94	238.2	1334	13.19	238.2	1416	16.51	238.4	1488	19.86	238.4	1559	23.34	239.4	1629	26.97	239.4	1695	30.60	239.4	1760	34.35	239.6	1828	38.58	239.6	-	-	-	-	-	
20200	3842.5	-	-	-	1389	14.79	238.2	1472	18.28	238.4	1543	21.81	238.4	1608	25.35	239.4	1677	29.17	239.4	1742	33.02	239.4	1803	36.86	239.4	1864	40.86	239.6	-	-	-	-	-	
21300	4051.7	-	-	-	1444	16.53	238.2	1529	20.18	238.4	1597	23.91	238.4	1661	27.63	238.4	1725	31.49	239.4	1789	35.54	239.4	1849	39.59	239.4	-	-	-	-	-	-	-	-	
22400	4261.0	-	-	-	1500	18.41	238.2	1585	22.23	238.2	1653	26.14	238.4	1716	30.06	238.4	1775	33.98	238.4	1836	38.17	239.4	-	-	-	-	-	-	-	-	-	-	-	-
23500	4470.2	-	-	-	1556	20.45	238.2	1639	24.46	238.2	1709	28.53	238.4	1770	32.64	238.4	1828	36.75	238.4	-	-	-	-	-	-	-	-	-	-	-	-	-	-	-
24600	4679.5	-	-	-	1613	22.66	238.2	1694	26.85	238.2	1765	31.08	238.4	1825	35.38	238.4	1882	39.69	238.4	-	-	-	-	-	-	-	-	-	-	-	-	-	-	-
25700	4888.7	-	-	-	1670	25.04	238.2	1749	29.42	238.2	1822	33.80	238.2	1881	38.29	238.4	-	-	-	-	-	-	-	-	-	-	-	-	-	-	-	-	-	-

SKYPLUME G1-ELMV-40 - DMF 330				Nozzle Outlet Area = 4.929 ft <sup>2</sup>						OA = 12.70 ft <sup>2</sup>						MAX Speed = 1708 RPM						Fan Efficiency Grade: FEG 67												
Fan Inlet CFM	Nozzle outlet velocity FPM	1" S.P.			2" S.P.			3" S.P.			4" S.P.			5" S.P.			6" S.P.			7" S.P.			8" S.P.			9" S.P.			10" S.P.			11" S.P.		
		RPM	BHP	E.R. (%)	RPM	BHP	E.R. (%)	RPM	BHP	E.R. (%)	RPM	BHP	E.R. (%)	RPM	BHP	E.R. (%)	RPM	BHP	E.R. (%)	RPM	BHP	E.R. (%)	RPM	BHP	E.R. (%)	RPM	BHP	E.R. (%)	RPM	BHP	E.R. (%)			
15000	3043.2	838	5.63	282.1	939	8.39	284.8	1034	11.39	287.8	1125	14.61	284.82	1216	18.26	284.8	1299	21.91	284.8	1381	25.98	286.9	1457	30.10	286.9	1531	34.22	286.9	1601	38.63	283.5	1670	43.56	283.5
16500	3347.5	900	6.88	282.1	996	9.87	284.8	1081	12.95	287.8	1169	16.47	287.84	1251	20.09	284.8	1333	24.10	284.8	1409	28.12	284.8	1484	32.44	286.9	1557	36.98	286.9	1625	41.50	286.9	1691	46.04	286.9
18000	3651.9	964	8.33	282.1	1054	11.54	284.8	1136	14.90	284.8	1215	18.46	287.84	1294	22.30	287.8	1369	26.30	284.8	1444	30.68	284.8	1515	35.06	284.8	1583	39.55	286.9	1651	44.49	286.9	-	-	-
19500	3956.2	1029	9.98	282.1	1114	13.46	282.1	1192	17.05	284.8	1264	20.68	284.76	1339	24.74	287.8	1411	28.90	287.8	1480	33.25	284.8	1550	37.99	284.8	1617	42.73	284.8	1680	47.47	284.8	-	-	-
21000	4260.5	-	-	-	1176	15.61	282.1	1250	19.41	284.8	1320	23.33	284.76	1386	27.33	287.8	1456	31.80	287.8	1522	36.28	287.8	1586	40.92	284.8	1652	46.02	284.8	-	-	-	-	-	-
22500	4564.8	-	-	-	1238	18.01	282.1	1308	22.02	282.1	1376	26.21	284.76	1439	30.40	284.8	1502	34.86	287.8	1567	39.65	287.8	1628	44.45	287.8	1688	49.32	284.8	-	-	-	-	-	-
24000	4869.1	-	-	-	1302	20.68	282.1	1369	24.96	282.1	1433	29.34	284.76	1495	33.82	284.8	1552	38.29	284.8	1613	43.19	287.8	1674	48.30	287.8	-	-	-	-	-	-	-	-	-
25500	5173.5	-	-	-	1366	23.64	282.1	1431	28.18	282.1	1492	32.74	284.76	1552	37.50	284.8	1608	42.25	284.8	1661	47.01	284.8	-	-	-	-	-	-	-	-	-	-	-	-
27000	5477.8	-	-	-	1430	26.90	282.1	1493	31.71	282.1	1552	36.52	282.05	1609	41.46	284.8	1664	46.50	284.8	-	-	-	-	-	-	-	-	-	-	-	-	-	-	-
28500	5782.1	-	-	-	-	-	-	1556	35.55	282.1	1613	40.63	282.05	1667	45.73	284.8	-	-	-	-	-	-	-	-	-	-	-	-	-	-	-	-	-	-

SKYPLUME G1-ELLV-40 - DMF 330				Nozzle Outlet Area = 6.393 ft <sup>2</sup>						OA = 12.70 ft <sup>2</sup>						MAX Speed = 1708 RPM						Fan Efficiency Grade: FEG 71												
Fan Inlet CFM	Nozzle outlet velocity FPM	1.0" S.P.			2" S.P.			3" S.P.			4" S.P.			5" S.P.			6" S.P.			7" S.P.			8" S.P.			9" S.P.			10" S.P.			S.P.		
		RPM	BHP	E.R. (%)	RPM	BHP	E.R. (%)	RPM	BHP	E.R. (%)	RPM	BHP	E.R. (%)	RPM	BHP	E.R. (%)	RPM	BHP	E.R. (%)	RPM	BHP	E.R. (%)	RPM	BHP	E.R. (%)	RPM	BHP	E.R. (%)	RPM	BHP	E.R. (%)			
19200	3003.3	960	7.86	238.2	1058	11.18	238.4	1136	14.53	238.4	1214	18.16	239.4	1286	21.81	239.4	1359	25.86	239.6	1431	30.11	239.6	1498	34.37	239.6	1567	39.1	239.9	1635	44.04	239.9	-	-	-
20500	3206.6	1009	9.08	238.2	1107	12.60	238.4	1183	16.18	238.4	1256	19.92	239.4	1327	23.82	239.4	1392	27.72	239.4	1463	32.21	239.6	1529	36.75	239.6	1592	41.28	239.6	1656	46.17	239.9	-	-	-
21800	3410.0	1059	10.43	238.2	1157	14.15	238.4	1231	17.97	238.4	1298	21.9	239.4	1368	25.94	239.4	1433	30.08	239.4	1494	34.31	239.6	1561	39.14	239.6	1623	43.96	239.6	1683	48.79	239.6	-	-	-
23100	3613.3	1110	11.93	238.2																														

# PERFORMANCE DATA

SKYPLUME G1-ELMV-44 - DMF 365				Nozzle Outlet Area = 6.026 ft <sup>2</sup>												OA = 15.61 ft <sup>2</sup>						MAX Speed = 1545 RPM						Fan Efficiency Grade: FEG 67						
Fan Inlet CFM	Nozzle outlet velocity FPM	1" S.P.			2" S.P.			3" S.P.			4" S.P.			5" S.P.			6" S.P.			7" S.P.			8" S.P.			9" S.P.			10" S.P.			11" S.P.		
		RPM	BHP	E.R. (%)	RPM	BHP	E.R. (%)	RPM	BHP	E.R. (%)	RPM	BHP	E.R. (%)	RPM	BHP	E.R. (%)	RPM	BHP	E.R. (%)	RPM	BHP	E.R. (%)	RPM	BHP	E.R. (%)	RPM	BHP	E.R. (%)	RPM	BHP	E.R. (%)			
18500	3070.0	763	7.02	282.1	854	10.41	284.8	939	14.09	287.8	1021	18.04	287.84	1103	22.52	284.8	1177	27.02	284.8	1251	31.97	286.9	1321	37.05	286.9	1387	42.14	286.9	1449	47.40	283.5	1512	53.49	283.5
20400	3385.3	822	8.62	282.1	907	12.31	284.8	984	16.11	284.8	1063	20.43	287.84	1136	24.84	284.8	1210	29.80	284.8	1279	34.76	284.8	1345	40.00	286.9	1411	45.61	286.9	1473	51.21	286.9	1532	56.81	286.9
22300	3700.6	882	10.49	282.1	962	14.46	284.8	1036	18.62	284.8	1106	22.98	287.84	1177	27.73	287.8	1244	32.59	284.8	1312	38.01	284.8	1376	43.43	284.8	1436	48.85	284.8	1498	54.95	286.9	-	-	-
24200	4015.9	943	12.64	282.1	1019	16.95	282.1	1089	21.39	284.8	1153	25.90	284.76	1220	30.86	287.8	1284	36.01	287.8	1345	41.26	284.8	1409	47.14	284.8	1468	53.03	284.8	1525	58.91	284.8	-	-	-
26100	4331.2	-	-	-	1076	19.74	282.1	1143	24.45	284.8	1205	29.32	284.76	1263	34.18	284.8	1327	39.73	287.8	1386	45.30	287.8	1442	50.86	284.8	1502	57.20	284.8	-	-	-	-	-	
28000	4646.5	-	-	-	1136	22.87	282.1	1198	27.86	282.1	1259	33.04	284.76	1315	38.27	284.8	1370	43.65	287.8	1429	49.62	287.8	1484	55.59	287.8	1537	61.56	287.8	-	-	-	-	-	
29900	4961.8	-	-	-	1195	26.36	282.1	1256	31.68	282.1	1313	37.11	284.76	1368	42.68	284.8	1420	48.26	284.8	1472	54.16	287.8	1527	60.54	287.8	-	-	-	-	-	-	-	-	
31800	5277.1	-	-	-	1255	30.22	282.1	1314	35.89	282.1	1368	41.55	282.05	1421	47.46	284.8	1472	53.39	284.8	1520	59.32	284.8	-	-	-	-	-	-	-	-	-	-	-	-
33700	5592.4	-	-	-	1316	34.49	282.1	1372	40.49	282.1	1425	46.50	282.05	1475	52.62	284.8	1525	58.91	284.8	-	-	-	-	-	-	-	-	-	-	-	-	-	-	-
35600	5907.7	-	-	-	-	-	-	1432	45.53	282.1	1482	51.87	282.05	1530	58.21	282.1	-	-	-	-	-	-	-	-	-	-	-	-	-	-	-	-	-	-

SKYPLUME G1-ELLV-44 - DMF 365				Nozzle Outlet Area = 7.815 ft <sup>2</sup>												OA = 15.61 ft <sup>2</sup>						MAX Speed = 1545 RPM						Fan Efficiency Grade: FEG 71						
Fan Inlet CFM	Nozzle outlet velocity FPM	1.0" S.P.			2" S.P.			3" S.P.			4" S.P.			5" S.P.			6" S.P.			7" S.P.			8" S.P.			9" S.P.			10" S.P.			S.P.		
		RPM	BHP	E.R. (%)	RPM	BHP	E.R. (%)	RPM	BHP	E.R. (%)	RPM	BHP	E.R. (%)	RPM	BHP	E.R. (%)	RPM	BHP	E.R. (%)	RPM	BHP	E.R. (%)	RPM	BHP	E.R. (%)	RPM	BHP	E.R. (%)	RPM	BHP	E.R. (%)			
23500	3007.0	869	9.64	238.2	957	13.69	238.4	1028	17.80	238.4	1099	22.24	239.4	1164	26.71	239.4	1230	31.66	239.6	1295	36.86	239.6	1356	42.06	239.6	1418	47.80	239.9	1479	53.89	239.9	-	-	-
25000	3199.0	911	11.04	238.2	1000	15.33	238.4	1068	19.71	238.4	1135	24.27	239.4	1199	29.03	239.4	1258	33.78	239.4	1322	39.27	239.6	1382	44.81	239.6	1439	50.34	239.6	1497	56.34	239.9	-	-	-
26500	3390.9	954	12.59	238.2	1042	17.12	238.4	1109	21.75	238.4	1171	26.42	239.4	1234	31.46	239.4	1292	36.50	239.4	1349	41.70	239.6	1409	47.57	239.6	1466	53.43	239.6	1520	59.30	239.6	-	-	-
28000	3582.9	997	14.30	238.7	1084	19.07	238.2	1151	23.95	238.4	1210	28.85	238.4	1270	34.01	239.4	1327	39.33	239.4	1382	44.66	239.4	1436	50.33	239.6	1493	56.53	239.6	-	-	-	-	-	
29500	3774.8	-	-	-	1125	21.20	238.2	1193	26.30	238.4	1251	31.47	238.4	1306	36.69	239.4	1363	42.30	239.4	1416	47.90	239.4	1467	53.51	239.4	1520	59.65	239.6	-	-	-	-	-	
31000	3967.7	-	-	-	1166	23.50	238.2	1235	28.83	238.4	1292	34.25	238.4	1345	39.67	238.4	1399	45.39	239.4	1452	51.29	239.4	1502	57.18	239.4	-	-	-	-	-	-	-	-	
32500	4158.7	-	-	-	1208	25.98	238.2	1278	31.53	238.4	1334	37.21	238.4	1385	42.90	238.4	1435	48.63	239.4	1487	54.81	239.4	1537	60.99	239.4	-	-	-	-	-	-	-	-	
34000	4350.6	-	-	-	1250	28.65	238.2	1319	34.44	238.2	1375	40.36	238.4	1426	46.31	238.4	1474	52.26	238.4	1523	58.48	239.4	-	-	-	-	-	-	-	-	-	-	-	-
35500	4542.5	-	-	-	1293	31.52	238.2	1360	37.57	238.2	1418	43.70	238.4	1468	49.91	238.4	1515	56.12	238.4	-	-	-	-	-	-	-	-	-	-	-	-	-	-	-
37000	4734.5	-	-	-	1336	34.60	238.2	1401	40.90	238.2	1460	47.24	238.4	1509	53.72	238.4	-	-	-	-	-	-	-	-	-	-	-	-	-	-	-	-	-	-

SKYPLUME G1-ELMV-49 - DMF 402				Nozzle Outlet Area = 7.306 ft <sup>2</sup>												OA = 19.31 ft <sup>2</sup>						MAX Speed = 1403 RPM						Fan Efficiency Grade: FEG 67						
Fan Inlet CFM	Nozzle outlet velocity FPM	1" S.P.			2" S.P.			3" S.P.			4" S.P.			5" S.P.			6" S.P.			7" S.P.			8" S.P.			9" S.P.			10" S.P.			11" S.P.		
		RPM	BHP	E.R. (%)	RPM	BHP	E.R. (%)	RPM	BHP	E.R. (%)	RPM	BHP	E.R. (%)	RPM	BHP	E.R. (%)	RPM	BHP	E.R. (%)	RPM	BHP	E.R. (%)	RPM	BHP	E.R. (%)	RPM	BHP	E.R. (%)	RPM	BHP	E.R. (%)			
22000	3011.2	683	8.17	282.1	766	12.22	284.8	846	16.66	287.8	921	21.43	284.8	996	26.78	284.8	1064	32.14	286.9	1132	38.18	286.9	1195	44.23	286.9	1255	50.27	286.9	1313	56.98	283.4	1370	64.22	283.5
24370	3335.6	738	10.12	282.1	816	14.54	284.8	886	19.10	287.8	959	24.30	287.8	1027	29.68	284.8	1094	35.60	284.8	1157	41.53	284.8	1218	47.96	286.9	1278	54.65	286.9	1334	61.34	286.9	1388	68.04	286.9
26740	3660.0	794	12.40	282.1	867	17.18	284.8	934	22.16	284.8	999	27.45	287.8	1064	33.15	287.8	1125	39.08	284.8	1187	45.58	284.8	1245	52.08	284.8	1301	58.71	286.9	1357	66.06	286.9	-	-	-
29110	3984.4	850	15.04	282.1	920	20.23	282.1	984	25.58	284.8	1043	31.01	284.8	1104	37.02	287.8	1162	43.22	287.8	1219	49.63	284.8	1276	56.71	284.8	1331	63.78	284.8	1382	70.76	284.8	-	-	-
31480	4308.8	-	-	-	974	23.68	282.1	1034	29.37	284.8	1091	35.23	284.8	1144	41.13	287.8	1202	47.84	287.8	1256	54.55	287.8	1307	61.34	284.8	1362	68.99	284.8	-	-	-	-	-	-
33850	4633.2	-	-	-	1029	27.56	282.1	1086	33.59	282.1	1141	39.86	284.8	1192	46.17	284.8	1243	52.72	287.8	1296	59.93	287.8	1346	67.15	287.8	1394	74.36	287.8	-	-	-	-	-	-
36220	4957.6	-	-	-	1085	31.89	282.1	1139	38.34	282.1	1191	44.92	284.8	1241	51.67	284.8	1288	58.43	284.8	1336	65.59	287.8	1386	73.31	287.8	-	-	-	-	-	-	-	-	-
38590	5282.0	-	-	-	1141	36.71	282.1	1194	43.59	282.1	1251	51.37	282.1	1291	57.63	284.8	1337	64.83	284.8	1381	72.02	284.8	-	-	-	-	-	-	-	-	-	-	-	-
40960	5606.4	-	-	-	1198	42.05	282.1	1249	49.35	282.1	1296	56.65	282.1	1342	64.08	284.8	1387	71.72	284.8	-	-	-	-	-	-	-	-	-	-	-	-	-	-	-
43330	5930.7	-	-	-	-	-	-	1304	55.66	282.1	1350	63.38	282.1	1394	71.10	282.1	-	-	-	-	-	-	-	-	-	-	-	-	-	-	-	-	-	-

SKYPLUME G1-ELLV-49 - DMF 402				Nozzle Outlet Area = 9.475 ft <sup>2</sup>												OA = 19.31 ft <sup>2</sup>						MAX Speed = 1403 RPM						Fan Efficiency Grade: FEG 71						
Fan Inlet CFM	Nozzle outlet velocity FPM	1.0" S.P.			2" S.P.			3" S.P.			4" S.P.			5" S.P.			6" S.P.			7" S.P.			8" S.P.			9" S.P.			10" S.P.			S.P.		
		RPM	BHP	E.R. (%)	RPM	BHP	E.R. (%)	RPM	BHP	E.R. (%)	RPM	BHP	E.R. (%)	RPM	BHP	E.R. (%)	RPM	BHP	E.R. (%)	RPM	BHP	E.R. (%)	RPM	BHP	E.R. (%)	RPM	BHP	E.R. (%)	RPM	BHP	E.R. (%)			
29000	3060.7	800	12.14	238.17	880	17.14	238.4	944	22.21	238.4	1007	27.64	239.42	1066	33.15	239.4	1124	39.08	239.6	1183	45.51	239.6	1238	51.93	239.6	1292	58.67	239.9	1348	66.19	239.9	-	-	-
30900	3261.2	840	13.98	238.17	920	19.27	238.4	982	24.68	238.4	1041	30.26	239.42	1099	36.13	239.4	1152	42.01	239.4	1208	48.57	239.6	1263	55.41	239.6	1315	62.25	239.6	1365	69.23	239.9	-	-	-
32800	3461.7	881	16.01	238.2	961	21.60	238.2	1021	27.33	238.4	1076	33.07	238.42	1132	39.26	239.4	1185	45.50	239.4	1235	69.80	239.4	1289	58.91	239.6	1340	66.17	239.6	1389	73.43	239.5	-	-	-
34700	3662.3	922																																



# PERFORMANCE DATA

SKYPLUME G1-ELMV-54 - DMF 445				Nozzle Outlet Area = 8.950 ft <sup>2</sup>												OA = 23.04 ft <sup>2</sup>						MAX Speed = 1267 RPM						Fan Efficiency Grade: FEG 77							
Fan Inlet CFM	Nozzle outlet velocity FPM	1" S.P.			2" S.P.			3" S.P.			4" S.P.			5" S.P.			6" S.P.			7" S.P.			8" S.P.			9" S.P.			10" S.P.			11" S.P.			
		RPM	BHP	E.R. (%)	RPM	BHP	E.R. (%)	RPM	BHP	E.R. (%)	RPM	BHP	E.R. (%)	RPM	BHP	E.R. (%)	RPM	BHP	E.R. (%)	RPM	BHP	E.R. (%)	RPM	BHP	E.R. (%)	RPM	BHP	E.R. (%)	RPM	BHP	E.R. (%)				
27000	3016.8	617	10.04	282.1	693	15.01	284.8	764	20.45	287.8	835	26.60	284.8	900	32.87	284.8	961	39.43	286.9	1023	46.85	286.9	1080	54.27	286.9	1134	61.68	286.9	1187	69.9	283.5	1238	78.77	283.5	
29900	3340.8	667	12.44	282.1	737	17.85	284.8	801	23.44	287.8	867	29.82	287.8	928	36.41	284.8	989	43.68	284.8	1045	50.95	284.8	1101	58.83	286.9	1154	67.04	286.9	1205	75.25	286.9	1254	83.46	286.9	
32800	3664.8	717	15.23	282.1	783	21.08	284.8	844	27.20	284.8	903	33.67	287.8	961	40.66	287.8	1017	47.93	284.8	1073	55.91	284.8	1125	63.88	284.8	1175	72.01	286.9	1226	81.02	286.9	-	-	-	
35700	3988.8	768	18.46	282.1	831	24.82	282.1	889	31.38	284.8	942	38.04	284.8	997	45.41	287.8	1050	53.02	287.8	1101	60.87	284.8	1153	69.54	284.8	1202	78.22	284.8	1249	86.9	284.7	-	-	-	
38600	4312.8	-	-	-	880	29.05	282.1	934	36.02	284.8	986	43.21	284.8	1034	50.44	287.8	1086	58.67	287.8	1135	66.90	287.8	1181	75.22	284.8	1230	84.6	284.8	-	-	-	-	-		
41500	4636.9	-	-	-	930	33.79	282.1	981	41.19	282.1	1031	48.88	284.8	1077	56.62	284.8	1122	64.64	284.8	1171	73.48	287.8	1216	82.33	287.8	1259	91.17	287.8	-	-	-	-	-		
44400	4960.9	-	-	-	980	39.10	282.1	1029	47.01	282.1	1076	55.07	284.8	1121	63.35	284.8	1164	71.62	284.8	1207	80.41	287.8	1252	89.87	287.8	-	-	-	-	-	-	-	-		
47300	5284.9	-	-	-	1030	45.00	282.1	1078	53.42	282.1	1122	61.85	282.1	1166	70.64	284.8	1208	79.46	284.8	1247	88.28	284.8	-	-	-	-	-	-	-	-	-	-	-	-	
50200	5608.9	-	-	-	1082	51.53	282.1	1128	60.47	282.1	1171	69.42	282.1	1212	78.53	284.8	1253	87.89	284.8	-	-	-	-	-	-	-	-	-	-	-	-	-	-	-	
53100	5933.0	-	-	-	-	-	-	1178	68.20	282.1	1219	77.66	282.1	1259	87.12	282.1	-	-	-	-	-	-	-	-	-	-	-	-	-	-	-	-	-	-	-

SKYPLUME G1-ELLV-54 - DMF 445				Nozzle Outlet Area = 11.615 ft <sup>2</sup>												OA = 23.04 ft <sup>2</sup>						MAX Speed = 1267 RPM						Fan Efficiency Grade: FEG 71							
Fan Inlet CFM	Nozzle outlet velocity FPM	1.0" S.P.			2" S.P.			3" S.P.			4" S.P.			5" S.P.			6" S.P.			7" S.P.			8" S.P.			9" S.P.			10" S.P.			S.P.			
		RPM	BHP	E.R. (%)	RPM	BHP	E.R. (%)	RPM	BHP	E.R. (%)	RPM	BHP	E.R. (%)	RPM	BHP	E.R. (%)	RPM	BHP	E.R. (%)	RPM	BHP	E.R. (%)	RPM	BHP	E.R. (%)	RPM	BHP	E.R. (%)	RPM	BHP	E.R. (%)				
34900	3004.7	712	14.30	238.2	785	20.32	238.4	843	26.43	238.4	901	33.02	239.42	954	39.66	239.4	1009	47.01	239.6	1062	54.74	239.6	1112	62.47	239.6	1163	71.0	239.9	1213.3	80.04	239.9	-	-	-	
37200	3202.8	748	16.46	238.2	821	22.84	238.4	877	29.35	238.4	931	36.14	239.42	984	43.21	239.4	1032	50.28	239.4	1085	58.44	239.6	1134	66.68	239.6	1181	74.92	239.6	1228.3	83.81	239.9	-	-	-	
39500	3400.8	784	18.84	238.2	857	25.58	238.4	912	32.49	238.4	962	39.43	239.42	1014	46.94	239.4	1062	54.45	239.4	1108	62.16	239.6	1157	70.91	239.6	1204	79.65	239.6	1247.8	88.4	239.6	-	-	-	
41800	3598.8	821	21.48	238.2	892	28.60	238.2	947	35.88	238.4	996	43.19	238.42	1044	50.87	239.4	1091	58.82	239.4	1136	66.76	239.4	1180	75.15	239.6	1226	84.41	239.6	-	-	-	-	-		
44100	3796.8	-	-	-	926	31.88	238.2	982	39.51	238.4	1030	47.23	238.42	1075	54.99	239.4	1121	63.38	239.4	1165	71.77	239.4	1206	80.15	239.4	1249	89.18	239.6	-	-	-	-	-		
46400	3994.8	-	-	-	962	35.44	238.2	1018	43.42	238.4	1065	51.53	238.42	1108	59.65	238.4	1152	68.16	239.4	1195	76.98	239.4	1236	85.80	239.4	-	-	-	-	-	-	-	-		
48700	4192.9	-	-	-	997	39.29	238.2	1054	47.60	238.4	1100	56.12	238.42	1142	64.64	238.4	1182	73.16	238.4	1225	82.42	239.4	1266	91.68	239.4	-	-	-	-	-	-	-	-	-	
51000	4390.9	-	-	-	1033	43.45	238.2	1089	52.14	238.2	1136	61.00	238.42	1177	69.93	238.4	1216	78.85	238.4	1256	87.00	239.4	-	-	-	-	-	-	-	-	-	-	-	-	
53300	4588.9	-	-	-	1069	47.92	238.2	1124	57.00	238.2	1171	66.19	238.42	1212	75.52	238.4	1251	84.84	238.4	-	-	-	-	-	-	-	-	-	-	-	-	-	-	-	-
55600	4786.9	-	-	-	1105	52.73	238.2	1159	62.20	238.2	1208	71.71	238.42	1248	81.44	238.4	-	-	-	-	-	-	-	-	-	-	-	-	-	-	-	-	-	-	-

SKYPLUME G1-ELMV-60 - DMF 490				Nozzle Outlet Area = 10.954 ft <sup>2</sup>												OA = 28.27 ft <sup>2</sup>						MAX Speed = 1146 RPM						Fan Efficiency Grade: FEG 67							
Fan Inlet CFM	Nozzle outlet velocity FPM	1" S.P.			2" S.P.			3" S.P.			4" S.P.			5" S.P.			6" S.P.			7" S.P.			8" S.P.			9" S.P.			10" S.P.			11" S.P.			
		RPM	BHP	E.R. (%)	RPM	BHP	E.R. (%)	RPM	BHP	E.R. (%)	RPM	BHP	E.R. (%)	RPM	BHP	E.R. (%)	RPM	BHP	E.R. (%)	RPM	BHP	E.R. (%)	RPM	BHP	E.R. (%)	RPM	BHP	E.R. (%)	RPM	BHP	E.R. (%)				
33000	3012.6	558	12.27	282.1	626	18.33	284.8	691	24.99	287.8	752	32.15	284.8	813	40.17	284.8	869	48.21	286.9	924	57.27	286.9	976	66.34	286.9	1025	75.40	286.9	1073	85.45	283.5	1119	96.31	283.5	
36500	3332.1	602	15.15	282.1	666	21.76	284.8	723	28.60	287.8	7828	36.38	287.8	838	44.45	284.8	893	53.32	284.8	944	62.19	284.8	995	71.85	286.9	1043	81.87	286.9	1089	91.9	286.9	1133	101.92	286.9	
40000	3651.6	647	18.50	282.1	707	25.65	284.8	762	33.10	284.8	815	41.02	287.8	868	49.55	287.8	918	58.45	284.8	969	68.18	284.8	1016	77.90	284.8	1062	87.88	286.9	1108	98.87	286.9	-	-	-	
43500	3971.2	693	22.38	282.1	749	30.13	282.1	802	38.13	284.8	850	46.24	284.8	900	55.26	287.8	948	64.53	287.8	994	74.16	284.8	1041	84.74	284.8	1086	95.31	284.8	1128	105.89	284.8	-	-	-	
47000	4290.7	-	-	-	793	35.20	282.1	842	43.69	284.8	889	52.46	284.8	933	61.32	287.8	980	71.33	287.8	1024	81.35	287.8	1066	91.58	284.8	1110	103.01	284.8	-	-	-	-	-	-	
50500	4610.2	-	-	-	837	40.88	282.1	884	49.88	282.1	929	59.25	284.8	971	68.67	284.8	1012	78.51	287.8	1056	89.27	287.8	1097	100.04	287.8	1136	110.8	287.8	-	-	-	-	-	-	
54000	4929.7	-	-	-	882	47.23	282.1	927	56.85	282.1	969	66.67	284.8	1010	76.74	284.8	1049	86.81	284.8	1088	97.60	287.8	1129	109.11	287.8	-	-	-	-	-	-	-	-	-	
57500	5249.2	-	-	-	927	54.28	282.1	970	64.52	282.1	1011	74.76	282.1	1050	85.48	284.8	1088	96.20	284.8	1124	106.92	284.8	-	-	-	-	-	-	-	-	-	-	-	-	-
61000	5568.7	-	-	-	973	62.08	282.1	1014	72.95	282.1	1053	83.81	282.1	1091	94.92	284.8	1128	106.29	284.8	-	-	-	-	-	-	-	-	-	-	-	-	-	-	-	-
64500	5888.3	-	-	-	-	-	-	1059	82.17	282.1	1097	93.66	282.1	1132	105.15	282.1	-	-	-	-	-	-	-	-	-	-	-	-	-	-	-	-	-	-	-

SKYPLUME G1-ELLV-60 - DMF 490				Nozzle Outlet Area = 14.207 ft <sup>2</sup>												OA = 28.27 ft <sup>2</sup>						MAX Speed = 1146 RPM						Fan Efficiency Grade: FEG 71						
Fan Inlet CFM	Nozzle outlet velocity FPM	1.0" S.P.			2" S.P.			3" S.P.			4" S.P.			5" S.P.			6" S.P.			7" S.P.			8" S.P.			9" S.P.			10" S.P.			S.P.		
		RPM	BHP	E.R. (%)	RPM	BHP	E.R. (%)	RPM	BHP	E.R. (%)	RPM	BHP	E.R. (%)	RPM	BHP	E.R. (%)	RPM	BHP	E.R. (%)	RPM	BHP	E.R. (%)	RPM	BHP	E.R. (%)	RPM	BHP	E.R. (%)	RPM	BHP	E.R. (%)			
42700	3005.6	644	17.50	238.2	710	24.87	238.4	762	32.34	238.4	815	40.40	239.42	863	48.52	239.4	912	57.52	239.6	960	66.97	239.6	1005	76.43	239.6	1051	86.9	239.9	1097	97.93	239.9	-	-	-
45500	3202.6	676	20.12	238.2	742	27.93	238.4	793	35.89	238.4	842	44.20	239.42	889	52.85	239.4	933	61.50	239.4	981	71.48	239.6	1026	81.55	239.6	1068	91.63	239.6	1111	102.51	239.9	-	-	-
48300	3399.7	709	23.03	237.2	775	31.27	238.4	824	39.72	238.4	870	48.21	239.42	916	57.39	239.4	960	66.58	239.															

# PERFORMANCE DATA

SKYPLUME G1-ELMV-66 - DMF 542				Nozzle Outlet Area = 13.254 ft <sup>2</sup>												OA = 34.26 ft <sup>2</sup>						MAX Speed = 1042 RPM						Fan Efficiency Grade: FEG 77						
Fan Inlet CFM	Nozzle outlet velocity FPM	1" S.P.			2" S.P.			3" S.P.			4" S.P.			5" S.P.			6" S.P.			7" S.P.			8" S.P.			9" S.P.			10" S.P.			11" S.P.		
		RPM	BHP	E.R. (%)	RPM	BHP	E.R. (%)	RPM	BHP	E.R. (%)	RPM	BHP	E.R. (%)	RPM	BHP	E.R. (%)	RPM	BHP	E.R. (%)	RPM	BHP	E.R. (%)	RPM	BHP	E.R. (%)	RPM	BHP	E.R. (%)	RPM	BHP	E.R. (%)			
40000	3018.0	508	14.90	282.1	570	22.24	284.8	628	30.30	287.8	684	38.97	284.82	740	48.69	284.8	790	58.42	284.8	841	69.39	286.9	888	80.38	286.9	932	91.37	286.9	975	103.48	283.5	1018	116.64	283.5
44250	3338.6	548	18.40	282.1	606	26.42	284.8	658	34.69	287.8	712	44.13	287.84	763	53.89	284.8	813	64.64	284.8	859	75.40	284.8	905	87.06	286.9	949	99.21	286.9	991	111.37	286.9	1031	123.52	286.9
48500	3659.3	589	22.49	282.1	643	31.15	284.8	694	40.19	284.8	742	49.78	287.84	790	60.11	287.8	835	70.87	284.8	881	84.60	284.8	925	94.46	284.8	966	106.50	286.9	1008	119.82	286.9	-	-	-
52750	3979.9	631	27.22	282.1	682	36.61	282.1	730	46.31	284.8	774	56.15	284.76	819	67.06	287.8	863	78.30	287.8	904	89.93	284.8	947	102.76	284.8	966	106.50	286.9	1026	128.41	284.8	-	-	-
57000	4300.6	-	-	-	722	42.79	282.1	767	53.09	284.8	809	63.72	284.76	849	74.42	287.8	892	86.57	287.8	932	98.72	287.8	970	111.07	284.8	1010	124.92	284.8	-	-	-	-	-	
61250	4621.2	-	-	-	762	49.72	282.1	805	60.63	282.1	846	71.99	284.76	884	83.41	284.8	921	95.30	287.8	961	108.36	287.8	998	121.41	287.8	1034	134.47	287.8	-	-	-	-	-	
65500	4941.9	-	-	-	803	57.45	282.1	844	69.12	282.1	883	81.03	284.76	920	93.24	284.8	955	105.45	284.8	991	118.48	287.8	1027	132.44	287.8	-	-	-	-	-	-	-	-	
69750	5262.6	-	-	-	844	66.05	282.1	884	78.47	282.1	920	90.90	282.05	956	103.88	284.8	991	116.88	284.8	1023	129.89	287.8	-	-	-	-	-	-	-	-	-	-	-	
74000	5583.2	-	-	-	886	75.56	282.1	924	88.74	282.1	959	101.93	282.05	994	115.39	284.8	1027	129.18	284.8	-	-	-	-	-	-	-	-	-	-	-	-	-	-	
78250	5903.9	-	-	-	-	-	-	965	99.99	282.1	999	113.39	282.05	1031	127.87	282.1	-	-	-	-	-	-	-	-	-	-	-	-	-	-	-	-		

SKYPLUME G1-ELLV-66 - DMF 542				Nozzle Outlet Area = 17.191 ft <sup>2</sup>												OA = 34.26 ft <sup>2</sup>						MAX Speed = 1042 RPM						Fan Efficiency Grade: FEG 71						
Fan Inlet CFM	Nozzle outlet velocity FPM	1.0" S.P.			2" S.P.			3" S.P.			4" S.P.			5" S.P.			6" S.P.			7" S.P.			8" S.P.			9" S.P.			10" S.P.			S.P.		
		RPM	BHP	E.R. (%)	RPM	BHP	E.R. (%)	RPM	BHP	E.R. (%)	RPM	BHP	E.R. (%)	RPM	BHP	E.R. (%)	RPM	BHP	E.R. (%)	RPM	BHP	E.R. (%)	RPM	BHP	E.R. (%)	RPM	BHP	E.R. (%)	RPM	BHP	E.R. (%)			
52000	3024.8	588	21.47	238.2	648	30.44	238.4	696	39.54	238.4	743	49.33	239.4	787	59.22	239.4	831	70.06	239.6	875	81.57	239.6	916	93.09	239.6	957	69.70	239.9	999	119.06	239.0	-	-	-
55300	3216.8	617	24.59	238.2	677	34.08	238.4	723	43.76	238.4	767	53.82	239.4	810	64.34	239.4	850	74.85	239.4	893	86.88	239.6	934	99.13	239.6	972	111.38	239.6	1011	124.42	239.9	-	-	-
58300	3391.3	643	27.71	238.2	703	37.66	238.4	748	47.86	238.4	789	58.12	239.4	832	69.21	239.4	871	80.30	239.4	910	91.74	239.6	950	104.65	239.6	988	117.55	239.6	1025	130.45	239.6	-	-	-
61900	3600.7	675	31.82	238.2	733	42.37	238.2	779	53.15	238.4	819	63.98	238.4	858	75.35	239.4	897	87.12	239.4	934	98.89	239.4	970	111.29	239.6	1008	125	239.6	-	-	-	-	-	
65200	3792.7	-	-	-	761	47.08	238.2	807	58.36	238.4	846	69.77	238.4	883	81.26	239.4	921	93.66	239.4	957	67.60	239.4	991	118.46	239.4	1026	131.85	239.6	-	-	-	-	-	
68500	3984.6	-	-	-	789	52.18	238.2	835	63.95	238.4	874	75.94	238.4	909	87.92	238.4	945	100.50	239.4	981	113.53	239.4	1015	126.56	239.4	-	-	-	-	-	-	-	-	
71800	4176.6	-	-	-	817	57.67	238.2	864	48.40	238.4	902	82.49	238.4	937	95.05	238.4	970	107.66	239.4	1005	121.31	239.4	1038	134.96	239.4	-	-	-	-	-	-	-	-	
75100	4368.6	-	-	-	846	63.59	238.2	892	76.39	238.2	930	89.45	238.4	964	102.59	238.4	997	115.73	238.4	1029	129.42	239.4	-	-	-	-	-	-	-	-	-	-	-	
78400	4560.5	-	-	-	874	69.95	238.2	920	83.31	238.2	959	96.84	238.4	992	110.56	238.4	1024	124.27	238.4	-	-	-	-	-	-	-	-	-	-	-	-	-	-	
81700	4752.5	-	-	-	903	76.76	238.2	948	90.68	238.2	987	104.68	238.4	1020	118.97	238.4	-	-	-	-	-	-	-	-	-	-	-	-	-	-	-	-	-	

**Notes:**

1. Performance Installation Type C: Ducted Inlet and Free Outlet.
2. Power Rating (watts, kW, bhp) does not include transmission losses.
3. Performance Ratings do not include the effects of appurtenances (accessories)
4. Performance Ratings do not include the effects of Crosswinds.

# Plasticair Inc., Servicing Industry



FRP Fans



Scrubbing Equipment



Laboratory Fumehoods

## Plasticair Product List

### Scrubbers:

Horizontal Packed Bed - Single/Double (HS-Series)

Vertical Packed Bed Towers (VS-Series)

Odour Control Scrubbers (HCS, VCS-Series)

Demisters - Vane Type (P-Series)

Demisters - Mesh Type (M-Series)

Demisters - Multiple Stage Type (E-Series)

Venturi Scrubbers (ECE-Series)

Laboratory Fume Hood Scrubbers (FHS-Series)

### Scrubber Applications:

Oil/Air Separators

Chlorine Scrubbers

Micro Chip Manufacturing Scrubbers

Plating Plant Scrubbers

Pickling Line Scrubbers

Chromic Acid Scrubbers And Demisters

### FRP Fans:

Axial Fans - Vane / Tube

Panel Fans - Wall Mount / Box Mount

Inline Centrifugal - Backward Curved Laboratory

Fans - B.I. Utility Sets / B.I. Tubular High

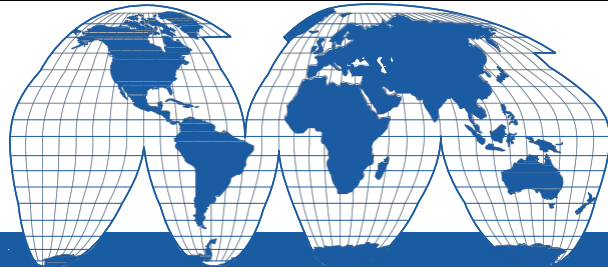
Pressure Fans - Radial Blade

Medium Pressure Fans - Radial Blade

Medium Pressure Fans - Backward Curved

Mini Industrial Vent Sets - Radial Blade / B.I.

Plasticair's Sales Forces are located in major cities around the world.



Contact the factory for the agent closest to you.

Your Local Plasticair Representative is:

Bulletin # 132  
October 2015



Plasticair Inc.  
1275 CRESTLAWN DRIVE,  
MISSISSAUGA, ONTARIO, CANADA L4W 1A9  
TEL: (905) 625-9164 FAX: (905) 625-0147