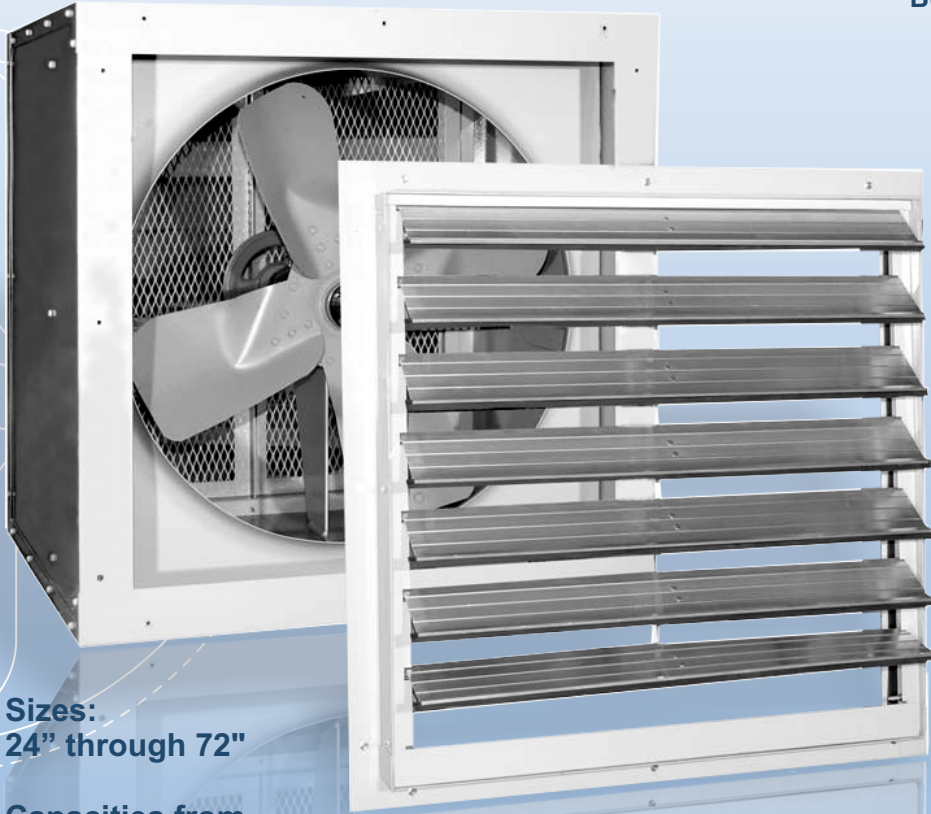


Propeller Fan "BE" Series

ENCLOSED BELT DRIVEN WALL EXHAUST FAN

THESE LOW PRESSURE BELT DRIVEN FANS ARE IDEALLY SUITED FOR VENTILATION OF UNDERGROUND GARAGES OF APARTMENT BUILDINGS, WAREHOUSES, PUBLIC BUILDINGS, GREENHOUSES ETC.



Sizes:
24" through 72"

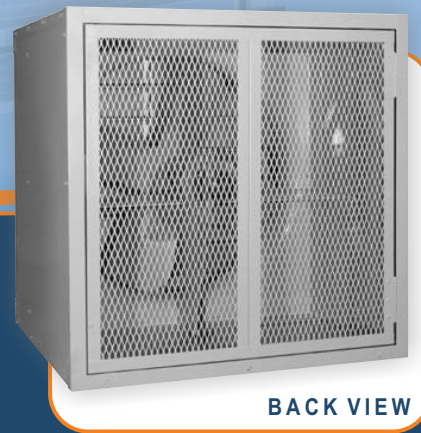
Capacities from
1,000 to 60,000 CFM



Reversomatic Manufacturing Limited certifies that Models BEA-24 to BEA-60 inclusive shown on pages 2 and 3 are licensed to bear the AMCA Seal. The ratings are based on tests and procedures performed in accordance with AMCA publication 211 and AMCA publication 311 and comply with the requirements of the AMCA Certified Ratings Program.



FRONT VIEW



BACK VIEW

Product has been evaluated by UL as per UL 705 for United State and CSA Standard C22.2 No.113-M1984 for Canada.



REVERSOMATIC
MANUFACTURING LIMITED

790 Rowntree Dairy Road, Woodbridge ON, Canada L4L 5V3
Tel: 905-851-6701 • Fax: 905-851-8376
Toll Free: 1.866.890.6457 • 1.800.810.3473
info@reversomatic.com

www.reversomatic.com

ENCLOSED BELT DRIVEN WALL EXHAUST FAN

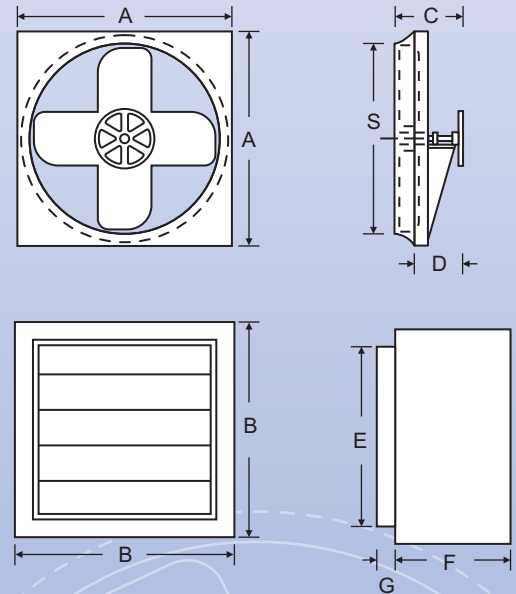
FEATURES:

- The frame features a venturi orifice
- sturdy welded construction appropriate for industrial, Commercial and Agricultural applications
- Fan panels are heavy gauge steel with die formed edges
- All welded structural steel provides durable support for fan motors, bearings, shafts and drives. This support structure features an unique design which properly spaces the blade from the structure, eliminating vibration and reducing excess noise
- Shafts rotate in permanently lubricated heavy duty ball bearing pillow blocks. Bearings are selected for a minimum average life of 200,000 hours at maximum catalogue operating speeds
- The propeller blades are made of heavy gauge steel and are statically balanced
- Belt drive engineered to 50% overload
- Motor mounting plates are adjustable to obtain proper belt tension
- Motors are heavy duty ball bearing type carefully matched to the load
- Cabinet constructed of heavy duty 18 Ga enamel finish satin coat or galvanized steel
- Shutter blades are made of heavy gauge extruded aluminum, then stripped with neoprene gasket to ensure an airtight seal
- Rear guard made of finger proof expanded metal. Also includes a centre access door for easy serviceability

DIMENSIONS:

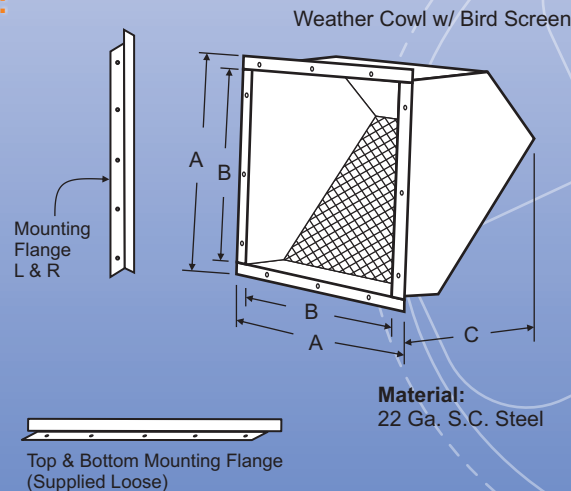
MODEL	A"	B"	C"	D"	E"	F"	G"	S"
BE24	30	30 1/8	13 1/2	11 1/2	26 3/4	27	3	25
BE30	36	36 1/8	14	12 1/2	32 3/4	27	3	31
BE36	42	42 1/8	16	13	38 3/4	27	3	37
BE42	49 1/4	49 3/8	16 1/2	14	45 3/4	30	3	43
BE48	55	55 1/8	19	16	51 3/4	30	3	49
BE54	60	60 1/8	21	18	56 3/4	32	3	55
BE60	68	68 1/8	22	19	64 3/4	33	3	61
BE66	74	74 1/8	23	20	70 3/4	40	3	67
BE72	79	79 1/8	24	21	75 3/4	40	3	73

* Consult factory representative for information on special applications and larger sizes. Order by Catalogue Number and state voltage required.



OPTIONAL ACCESSORIES:

- Two speed motor
- Special anti-corrosive coatings
- Pulleys
- Static free belts
- Wall mounting flanges
- Wall cabinet
- Weather cowl with bird screen
- Gravity Shutter
- Back guard



Weather Cowl Dimension

MODEL	A"	B"	C"
BE24	30	27	18
BE30	36	33	21
BE36	42	39	24
BE42	49	46	27 5/8
BE48	55	52	30 5/8
BE54	60	57	33
BE60	68	65	36 5/8
BE66	74	71	40
BE72	79	76	43

BEA SERIES

PERFORMANCE DATA

"A" TYPE PROPELLER



MODEL Motor HP Max.	Max. Input Power Watts	Blade Type	FAN RPM	0"	1/8"	1/4"	3/8"	1/2"	5/8"	3/4"	1"	Sones @ 1/8" S.P.
				CUBIC FEET PER MINUTE								

BEA-24

0.33 HP	474	SD	625	3702	2740	1985	1113					8.6
0.5 HP	740	SD	725	4294	3720	2650	2110	1325				10.4
0.75 HP	905	SD	775	4590	4060	3050	2500	1800	1100			11.5
1 HP	1678	SD	950	5626	5200	4590	3780	3300	2760	2200		16.7
1.5 HP	2586	SD	1100	6515	6150	5770	5100	4350	3800	3585		21.7
2 HP	3357	HD	1200	7107	6775	6450	5985	5200	4595	4260	3500	25.4

BEA-30

0.5 HP	553	SD	500	6173	4930	3005	1403					9.1
0.75 HP	956	SD	600	7407	6500	5050	3420					14.6
1 HP	1519	SD	700	8642	7950	6923	5080	4100	2680	1762		20.6
2 HP	2268	SD	800	9877	9270	8560	7510	6253	5312	4215		21.6
3 HP	3225	SD	900	11111	10596	10000	9215	7965	6725	5961		22.7
3 HP	3225	HD	900								4051	22.7
3 HP	4106	HD	975	12037	11593	11065	10412	9575	8091	7215	5518	23.6

BEA-36

1 HP	700	SD	450	9513	8322	5651	2762	1325				9.8
1.5 HP	1460	SD	575	12156	11210	9790	7451	4863				15.0
2.0 HP	1875	SD	625	13213	12360	11512	8803	6600	4215	3061		17.4
3.0 HP	3240	HD	750	15856	15183	14415	13525	11250	9183	7418		23.1
5.0 HP	4312	HD	825	17441	16781	16132	15405	14003	11968	10265	6711	27.2

BEA-42

1.0 HP	825	SD	375	12467	9810	6218						13.4
1.5 HP	1042	SD	425	14129	12113	8865	5723					17.5
2 HP	1426	SD	450	14960	13005	10052	7120	4795				20.1
2 HP	1843	SD	490	16290	14689							25.4
3 HP	2375	SD	490			12080	8213	6585	4620	2431		25.4
5 HP	3815	HD	575	19116	17790	16001	13510	11215	8342	7100		36.5
7.5 HP	5539	XHD	650	21609	20431	19103	17269	14608	12117	10205	7461	47.0

*SD - Standard Duty, HD - Heavy Duty, XHD - Extra Heavy Duty

- All selections are based on CARBON STEEL construction. Test data is accumulated based on AMCA 210-85, figure 12, 2% tip clearance and ANSI S12.12 - 1992 panel tests, inlet only.

- Performance certified is for installation type A - Free inlet, Free outlet. Speed (RPM) shown is normal. Performance is based on actual speed of test.

- Performance ratings do not include the effects of appurtenances (accessories). The sound ratings shown are loudness values in fan sones at a distance of 1.5 m (5 ft) in a hemispherical free field calculated per AMCA International Standard 301. Values shown are for: Installation Type A: free outlet hemispherical sone levels.

NOTE:

For selections at other CFM and Static Pressure conditions, contact factory sales representative.

BEA SERIES

PERFORMANCE DATA

“A” TYPE PROPELLER



MODEL Motor HP Max.	Max. Input Power Watts	Blade Type	FAN RPM	0"	1 / 8 "	1 / 4 "	3 / 8 "	1 / 2 "	5 / 8 "	3 / 4 "	1 "	Sones @ 1/8" S.P.
				CUBIC FEET PER MINUTE								

BEA-48

2 HP	1181	SD	350	18741	16419	11600	6038	3229				16.4
3 HP	1765	SD	400	21419	19465	16605	10338	6781				22.0
3 HP	2518	HD	450	24096	22453	20398						29.3
5 HP	2908	HD	450				16481	10115	7750	4980		29.3
5 HP	3444	XHD	500	26773	25243	23708	21198	16993	11851	9342		36.8
7.5 HP	6066	XHD	575	30789	29507	28200	26619	24145	20012	15351	11085	47.7

BEA-54

2 HP	1283	SD	300	21185	17891	10779	6009					15.4
3 HP	2042	SD	350	24716	22310	20495	10845	7385				20.8
5 HP	3044	SD	400	28247	26120	22650	17800	12182	9254	6446		27.3
5 HP	3250	SD	445	31778	29850							34.2
7.5 HP	4190	SD	445			27468	21750	14500	11710	9600		34.2
7.5 HP	5950	HD	500	35309	33550	31800	28400	26500	20360	15748		42.7
10 HP	7911	XHD	550	38840	37350	35840	33681	32387	26325	20642	15924	51.5

BEA-60

5 HP	2982	SD	350	32529	29200	25635	20250	15885	10780			25.9
7.5 HP	3672	SD	375	34853	32100	28350	21504	19797	14897	10625		29.8
7.5 HP	4043	HD	425	39500	35650							38.9
10 HP	5350	HD	425			32700	25500	16050	12625	10750		38.9
10 HP	4800	HD	450	41824	38250	35500						43.3
10 HP	6354	XHD	450				32305	28653	24196	19828	14645	43.3

BEA-66

5 HP	2630	SD	275	42872	37941	29902	16526					22.7
5 HP	3420	SD	300	46770	42128	36635	21810	14914				27.7
7.5 HP	4341	SD	325	50667	46260	41735	29958	20683	14299			33.3
7.5 HP	5428	HD	350	54565	50439	46491	40938	26385	20221	14557		38.5
10 HP	6667	HD	375	58462	54674	51148	46551	34505	25533	20124		44.9
15 HP	8118	XHD	400	62360	58871	55523	51491	46314	32372	25746	16039	52.5
15 HP	11530	XHD	450	70155	67241	63838	60926	57163	52428	39300	27188	65.7

*SD - Standard Duty, HD - Heavy Duty, XHD - Extra Heavy Duty

- All selections are based on CARBON STEEL construction. Test data is accumulated based on AMCA 210-85, figure 12, 2% tip clearance and ANSI S12.12 - 1992 panel tests, inlet only.

- Performance certified is for installation type A - Free inlet, Free outlet. Speed (RPM) shown is normal. Performance is based on actual speed of test.

- Performance ratings do not include the effects of appurtenances (accessories). The sound ratings shown are loudness values in fan sones at a distance of 1.5 m (5 ft) in a hemispherical free field calculated per AMCA International Standard 301. Values shown are for: Installation Type A: free outlet hemispherical sone levels.

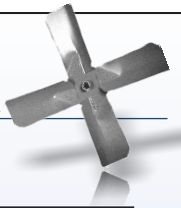
NOTE:

For selections at other CFM and Static Pressure conditions, contact factory sales representative.

BES SERIES

PERFORMANCE DATA

“S” TYPE PROPELLER



MODEL Motor HP Max.	Blade Type	FAN RPM	0"	1/8"	1/4"	3/8"	1/2"	5/8"	3/4"	1"	Sones @ 1/8" S.P.
			CUBIC FEET PER MINUTE								

BES-24

1/4 HP	SD	700	4153	3273	1768						10.0
1/3 HP	SD	750	4449	3673	2161	1331					11.5
1/2 HP	SD	800	4746	4062	2720	1722	1092				12.3
1/2 HP	SD	900	5339	4774	3820	2480	1790				15.2
3/4 HP	SD	950	5636	5114	4303	2990	2202	1596	1137		17.4
1 HP	SD	1100	6526	6100	5502	4655	3497	2748	2173		20.5
1.5	HD	1250	7415	7041	6596	5972	5175	4131	3333		25.3

BES-30

0.5 HP	SD	550	6314	4844	2775	1627					9.9
0.75 HP	SD	600	6888	5580	3744	2350	1389				11.4
1 HP	SD	650	7462	6301	4543	3064	2100	1262			13.1
1.5 HP	HD	750	8610	7692	6432	4869	3530	2686	1909		18.4
1.5 HP	HD	900	10332	9569	8636						23.6
2 HP	XHD	900				7585	6137	4809	4055	2685	23.6
3 HP	XHD	950	10906	10181	9346	8350	6969	5956	4770	3416	27.1

BES-36

3/4 HP	SD	500	9638	7864	4354	2606	1348				12.2
1.5 HP	SD	600	11566	10131	8173	4974	3622	2366	1402		16.3
1.5 HP	SD	700	13494	12306	10954						22.1
2 HP	HD	700				8895	5936	4707	3490		22.1
2 HP	HD	800	15421	14407	13245	11852					27.0
3 HP	XHD	800					9994	7177	6075	3811	27.0
3 HP	XHD	850	16385	15431	14359	13218	11601	9758	7062	5160	29.8

BES-42

1 HP	SD	400	11776	9156	4687	2642	1367				10.4
1.5 HP	SD	500	14721	12777	9956	6138	4110				16.4
3 HP	HD	600	17665	16008	14415	11593	8107	6107	4698		21.6
5 HP	XHD	700	20609	19189	17841	16169	13745	10341	8401	5620	29.5
5 HP	XHD	800	23553	22310	21068	19993	18312	16185	13686	9374	36.5

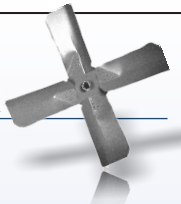
BES-48

1.5 HP	SD	350	15934	11879	5637	2912	1130				10.8
3 HP	HD	450	20487	17728	13877	8217	5638	3687	2271		18.1
3 HP	HD	550	25039	22814	20241	16920					25.9
5 HP	XHD	550					12075	8700	6840	3907	25.9
5 HP	XHD	650	29592	27721	25777	23335	20526	17742	12437	8742	37.3
7.5	XHD	700	31868	30131	28343	26393	23759	21172			53.5

BES SERIES

PERFORMANCE DATA

"S" TYPE PROPELLER



MODEL Motor HP Max.	Blade Type	FAN RPM	0"	1/8"	1/4"	3/8"	1/2"	5/8"	3/4"	1"	Sones @ 1/8" S.P.
			CUBIC FEET PER MINUTE								

BES-54

3.0 HP	SD	400	26354	22884	17426	11623	8791	6430	4271		18.3
5 HP	SD	450	29648	26640	22372	16097	12565	10047	7864	4026	23.0
5 HP	SD	500	32943	30294	27116	22593	16790	13821			27.7
7.5	HD	550	36237	33877	31147	27301	22651	17931	15306		32.8
7.5	XHD	600	39531	37368	34973	32052	28395	23249	19409		42.6

BES-60

3 HP	SD	300	28843	23229	13775	8692	5180	2912			15.8
5 HP	SD	350	33650	29203	21543	14610	10474	7084	4787		21.9
5 HP	SD	400	38457	34723	29520	21116	16322	12754			28.4
7.5 HP	HD	450	43264	40103	36189	30697	22803	18617	15367		36.6
7.5 HP	HD	475	45668	42681	39046	34189	26099	21864			40.6
10 HP	XHD	500	48071	45234	41862	37515	31706	25076	21322	15419	45.0

BES-66

5 HP	SD	275	35191	28523	17053	10886	6540	3755			16.6
5 HP	SD	325	41589	36351	28046	18866	13764	9606			22.9
7.5 HP	HD	375	47987	43656	37781	27528	21737	17215	13330	7567	30.8
10 HP	HD	400	51186	47234	42347	34848	25975	21009	17168	10554	35.2
10 HP	HD	425	54385	50714	46214	40159	30397	25291	21037		40.3
10 HP	XHD	450	57585	54117	49976	44554	36873	29525	25005	17926	45.3

BES-72

3 HP	SD	225	34726	25457	11962	6208	1441				13.2
5 HP	SD	250	38584	30722	18884	10159	5570	1139			16.3
5 HP	SD	275	42442	35675	25742	14523	9609	5536	1593		20.0
7.5 HP	SD	300	46301	40456	31870	19942	13431	9556			23.8
7.5 HP	SD	325	50159	44974	37503	28961	18425				27.8
10 HP	HD	350	54018	49409	42725	34668	24548	17618	13823	7333	33.0
10 HP	HD	375	57876	53749	47738	40798	33381	23131			37.5
10 HP	XHD	400	61734	57865	52592	46361	38974	32695			42.8

*SD - Standard Duty, HD - Heavy Duty, XHD - Extra Heavy Duty

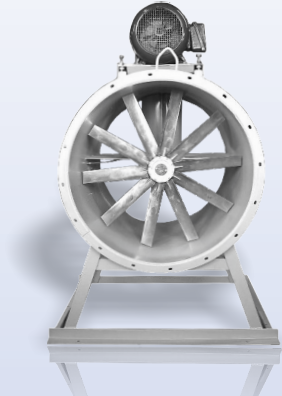
- All selections are based on CARBON STEEL construction. Test data is accumulated based on AMCA 210-85, figure 12, 2% tip clearance and ANSI S12.12 - 1992 panel tests, inlet only.

NOTE:

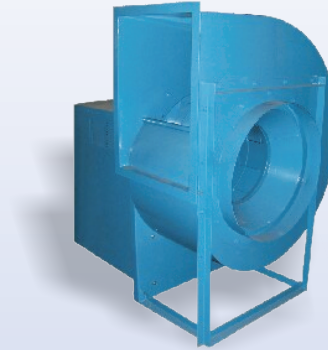
For selections at other CFM and Static Pressure conditions, contact factory sales representative.

Other Products

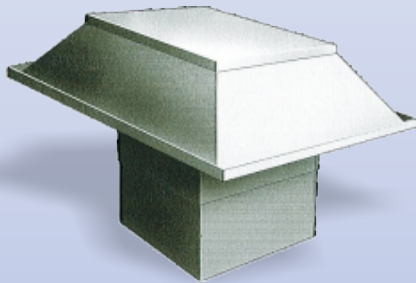
RBD / RDD SERIES
Tube Axial Fan



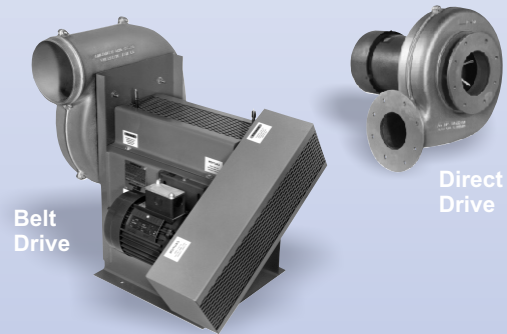
BI SERIES
Centrifugal Fan



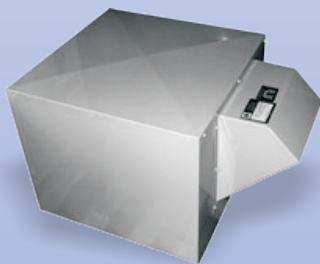
RHES/RHSS & RHEA/RHSA
Roof Hooded Exhaust & Supply Fan Series



AF PRESSURE BLOWERS



RE SERIES
Roof Exhaust Fans



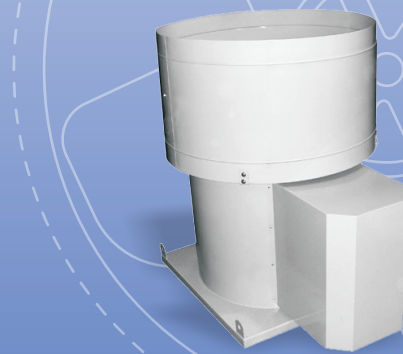
FA SERIES
Fresh Air Units



UB SERIES
Up Blast Exhaust Fans



UBD/UDD SERIES
Up Blast Tube Axial Fans





REVERSOMATIC
MANUFACTURING LIMITED

790 Rowntree Dairy Road, Woodbridge ON, Canada L4L 5V3
Tel: 905-851-6701 • Fax: 905-851-8376
Toll Free: 1.866.890.6457 • 1.800.810.3473
info@reversomatic.com

www.reversomatic.com