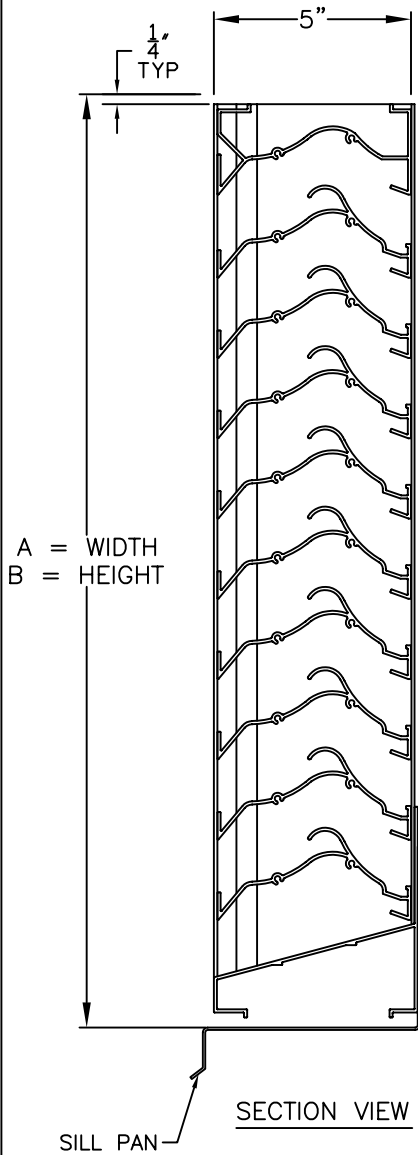


EXTRUDED ALUMINUM, 5" DEEP, HORIZONTAL FIXED TYPE BLADE FOR WIND DRIVEN RAIN



MODEL LE-53 STANDARD SPECIFICATIONS

FRAME: 5" DEEP CHANNEL, .081" THICK 6063-T6 EXTRUDED ALUMINUM ALLOY.

BLADES: .060" THICK 6063-T6 EXTRUDED ALUMINUM ALLOY.

FINISH: MILL.

SILL PAN: .060 THICK FORMED ALUMINUM.

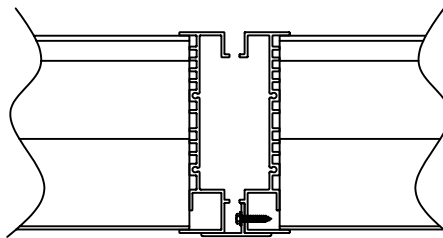
SCREEN: 1/2" REMOVABLE EXPANDED ALUMINUM BIRD SCREEN, LOCATED ON INTERIOR.

MAXIMUM PANEL SIZE: 96" X 96".

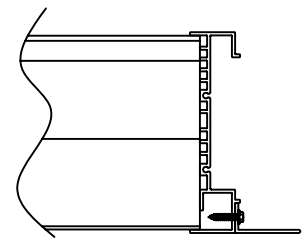
MINIMUM PANEL SIZE: 12" X 12".

DIMENSIONS: "A" (WIDTH) AND "B" (HEIGHT) ARE OPENING SIZES. LOUVERS ARE MADE 1/2" UNDERSIZE.

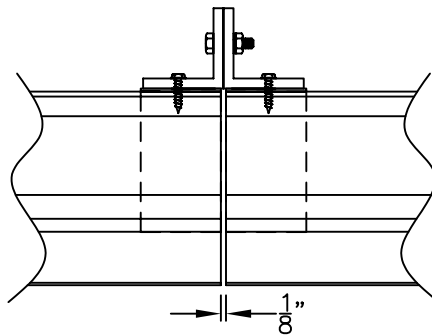
* PANELS OVER 60" WIDE WILL BE 6-1/2" DEEP DUE TO A VERTICAL INTERIOR BLADE SUPPORT ANGLE.



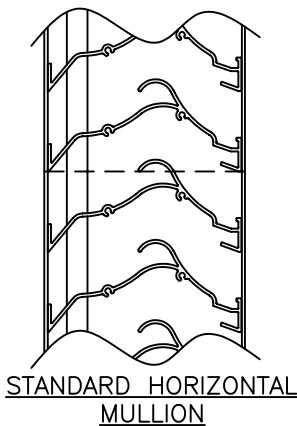
STANDARD VERTICAL MULLION



OPTIONAL FLANGED FRAME
(JAMB SHOWN)



ARCHITECTURAL VERTICAL
MULLION OPTIONAL



STANDARD HORIZONTAL
MULLION



American Warming and Ventilating LE-53 louver shown herein is licensed to bear the AMCA Seal. The ratings shown are based on tests and procedures performed in accordance with AMCA Publication 511 and comply with the requirements of the AMCA Certified Ratings Program. The AMCA Certified Ratings Seal applies to air performance ratings, water penetration ratings, and wind driven rain ratings.



american warming
and ventilating

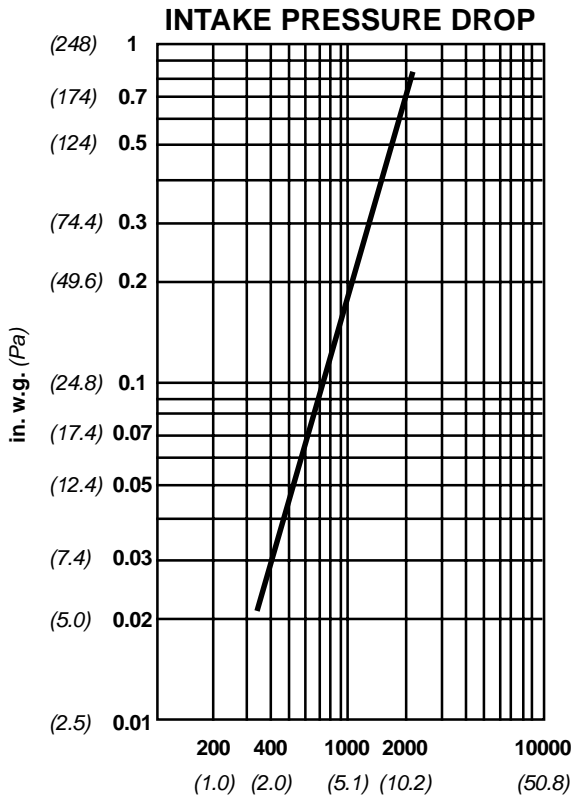
A MESTEK COMPANY

7301 INTERNATIONAL DRIVE HOLLAND, OHIO
Phone (419) 865-5000 Fax (419) 865-1375

LE-53 STATIONARY LOUVER

DRN. BY JEP	DWG. NO. LE-53	REV.
DATE 1/21/10		

Water Penetration : 0.01 oz (3.0 g) at 1250 fpm (6.35 m/s) recommended free area velocity
Pressure Drop : 0.31 in wg (76.8 Pa.) at 1250 fpm (6.35 m/s) and 8850 scfm (4.18 scm/s)
Free Area : 7.08 sq ft (0.658 sq m) = 44.3% for 48" x 48" (1.22m x 1.22m) test size



FREE AREA IN SQUARE FEET (sq meters)

		WIDTH							
		in. mm	12 305	24 610	36 914	48 1219	60 1524	72 1829	84 2134
HEIGHT	12 305	0.21	0.49	0.76	1.04	1.31	1.58	1.86	2.13
	24 610	0.020	0.046	0.071	0.097	0.122	0.147	0.173	0.198
	36 914	0.63	1.43	2.24	3.04	3.85	4.65	5.46	6.26
	48 1219	0.059	0.133	0.208	0.282	0.358	0.432	0.507	0.582
	60 1524	1.04	2.38	3.72	5.05	6.39	7.73	9.06	10.40
	72 1829	0.097	0.221	0.346	0.469	0.594	0.718	0.842	0.966
	84 2134	1.46	3.33	5.19	7.08	8.93	10.80	12.67	14.53
	96 2438	0.136	0.309	0.482	0.658	0.830	1.003	1.177	1.350
	12 305	1.88	4.27	6.67	9.07	11.47	13.87	16.27	18.67
24 610	0.175	0.397	0.620	0.843	1.066	1.289	1.512	1.734	
36 914	2.29	5.22	8.15	11.08	14.01	16.94	19.87	22.80	
48 1219	0.213	0.485	0.757	1.029	1.302	1.574	1.845	2.118	
60 1524	2.71	6.17	9.63	13.09	16.55	20.01	23.47	26.93	
72 1829	0.252	0.573	0.895	1.216	1.538	1.859	2.180	2.502	
84 2134	3.12	7.11	11.11	15.10	19.09	23.08	27.08	31.07	
96 2438	0.290	0.661	1.032	1.403	1.774	2.144	2.516	2.886	

Wind-Driven Rain Penetration Classes:		Discharge Loss Coefficient Classes:	
Class	Effectiveness	Class	Coefficient
A	100% to 99%	1	0.4 & above
B	98.9% to 95%	2	0.3 to 0.399
C	94.9% to 80%	3	0.2 to 0.299
D	Below 80%	4	0.199 & below

Wind Driven Rain Performance 29 mph (46.7 kph) with 3 in/h (76 mm/h)

Water Penetration	Effectiveness Ratio	Coefficient of Discharge	Core Velocity	Ventilation Airflow	Free Area Velocity
Class A	99.0%	Class 3	583 fpm (3 m/s)	6276 cfm (3 cm/s)	1133 fpm (5.8 m/s)

Wind Driven Rain Performance 50 mph (80.5 kph) with 8 in/h (203 mm/h)

Water Penetration	Effectiveness Ratio	Coefficient of Discharge	Core Velocity	Ventilation Airflow	Free Area Velocity
Class B	95.7%	Class 3	673 fpm (3.5 m/s)	7243 cfm (3 cm/s)	1307 fpm (6.6m/s)



American Warming & Ventilating certifies that the model LE-53 louver shown herein is licensed to bear the AMCA Seal. The ratings shown are based on tests and procedures performed in accordance with AMCA Publication 511 and comply with the requirements of the AMCA Certified Ratings Program. The AMCA Certified Ratings Seal applies to air performance, water penetration, and wind driven rain ratings.
LE-53

