

Extruded Aluminum Louver

4" Deep · Fixed High Performance Type Blade · Stationary Louver

X4K3

STANDARD MATERIALS AND CONSTRUCTION

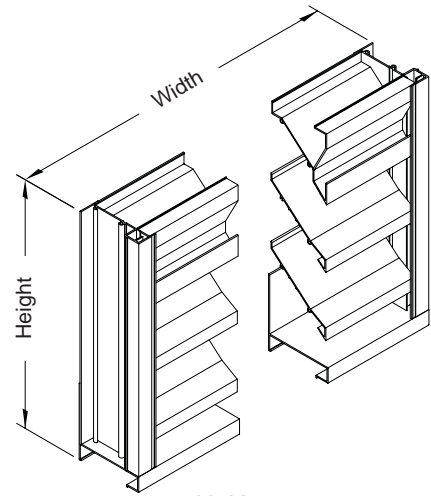
- FRAME:** 4" (101.6mm) deep channel x .081" thick 6063-T5 extruded aluminum alloy
- BLADES:** .081" thick 6063-T5 extruded aluminum alloy
- ASSEMBLY:** Mechanically Fastened
- FINISH:** Mill
- SCREEN:** 1/2" (12.7mm) removable expanded aluminum bird screen; located on interior
- MULLIONS:** Exposed

OPTIONS

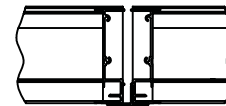
- Baked Enamel, Kynar, Anodize or Prime Coat Finish
- Variety of bird and insect screen
- Hidden-Vertical or Exposed-Horizontal Mullions
- Welded Construction
- Formed .063" Aluminum Extended Sill
- 1 1/2"W (38.1mm) x .08" (2.03mm) Thick Extruded 6063-T5 Aluminum Flange

NOTES

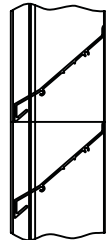
1. "A" width and "B" height are opening dimensions. Louvers are provided approximately 1/2" (12.7mm) undersize.
2. Panels over 60"W (1524mm) will have a 1 1/2" (38.1mm) x 1 1/2" (38.1mm) x 1 1/4" (31.75mm) 6063-T5 aluminum support angle mounted vertically on interior at approximate midpoint.
3. Openings that require multiple louver panels in both width and height will require internal structural supports. It is recommended that large openings will be divided with structural members so that the louvers will span either width or height with a single panel. Unusually high wind loading may require structural supports on non-multiple wide and multiple high assemblies. Structural supports and mounting accessories are not supplied as a standard.



X4K3



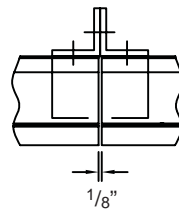
Standard Vertical Mullion



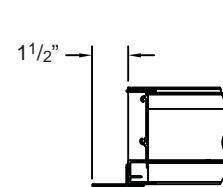
Standard Horizontal Mullion

DAMPER SIZES

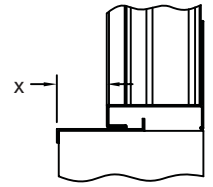
Orientation	Horizontal & Vertical	
Panel	Minimum Panel	Maximum Panel
X4K3	12"W x 12"H (304.8mm x 304.8mm)	96"W x 96"H (2438.4mm x 2438.4mm)



Optional Vertical Mullion



Optional Flange Frame



Optional Extended Sill



Cesco Products certifies that the model X4K3 louver shown herein is licensed to bear the AMCA Seal. The ratings shown are based on tests and procedures performed in accordance with AMCA Publication 511 and comply with the requirements of the AMCA Certified Ratings Program. The AMCA Certified Ratings Seal applies to air performance ratings and water penetration ratings.



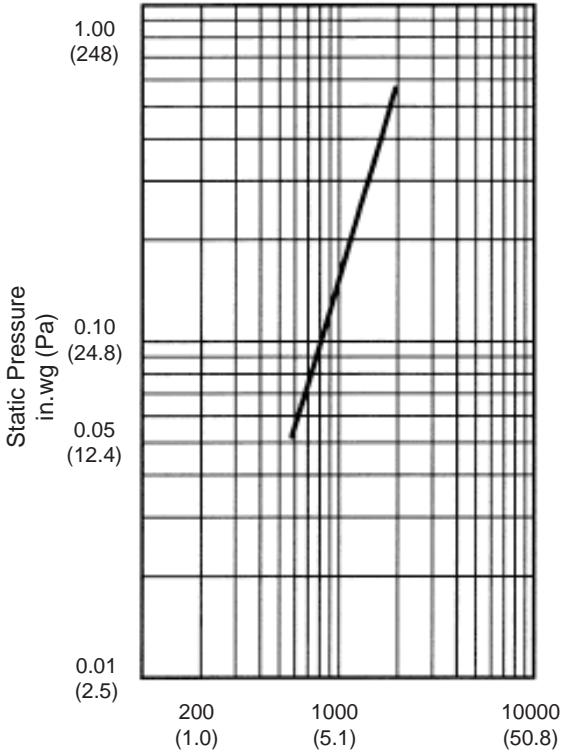
Extruded Aluminum Louver

4" Deep - Fixed High Performance Type Blade - Stationary Louver

X4K3

Water Penetration: 0.01 oz (3.0 g) at 779 fpm (3.96 m/s) recommended free area velocity
 Pressure Drop: 0.09 in.wg (22.3 Pa) at 779 fpm (3.96m/s) and 7034 SCFM (3.32 scm/s)
 Free Area: 9.03 sq.ft. (0.839 sq.m.) = 56.4% for 48"W x 48"H (1.22m x 1.22m) test size

Pressure Drop - Intake

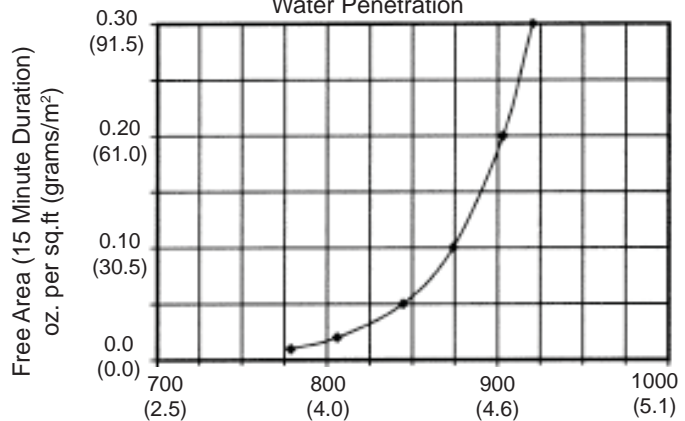


Velocity through Free Area FPM (meters/second)
 Standard Air - 0.075 lbs. per cu.ft.
 Ratings do not include the effect of a bird screen.

Free Area

Height	Width								
	in (mm)	12 (304)	24 (609)	36 (914)	48 (1219)	60 (1524)	72 (1828)	84 (2133)	96 (2438)
12 (304)		0.29 (0.027)	0.68 (0.063)	1.06 (0.098)	1.45 (0.135)	1.79 (0.166)	2.17 (0.202)	2.56 (0.233)	2.95 (0.274)
24 (609)		0.78 (0.072)	1.82 (0.169)	2.87 (0.267)	3.91 (0.363)	4.82 (0.448)	5.86 (0.544)	6.90 (0.641)	7.95 (0.739)
36 (914)		1.27 (0.118)	2.97 (0.276)	4.67 (0.434)	6.37 (0.592)	7.85 (0.729)	9.55 (0.887)	11.25 (1.045)	12.95 (1.203)
48 (1219)		1.77 (0.164)	4.12 (0.383)	6.47 (0.601)	9.03 (0.820)	10.89 (1.011)	13.24 (1.230)	15.59 (1.449)	17.95 (1.667)
60 (1524)		2.26 (0.210)	5.27 (0.490)	8.28 (0.769)	11.29 (1.049)	13.92 (1.293)	16.93 (1.573)	19.94 (1.852)	22.95 (2.132)
72 (1828)		2.75 (0.255)	6.41 (0.596)	10.08 (0.936)	13.74 (1.276)	16.95 (1.576)	20.62 (1.916)	24.28 (2.256)	27.95 (2.597)
84 (2133)		3.24 (0.301)	7.56 (0.702)	11.88 (1.104)	16.20 (1.505)	19.98 (1.856)	24.30 (2.258)	28.63 (2.660)	32.95 (3.061)
96 (2438)		3.73 (0.347)	8.71 (0.809)	13.69 (1.272)	18.66 (1.734)	23.02 (2.139)	27.99 (2.600)	32.97 (3.063)	37.95 (3.526)

Water Penetration



Below is an explanation of how to use the AMCA performance data for the recommended free area velocity of 779 fpm (3.96 m/s).

To determine minimum free area required for louver:

- Step #1** Divide the required CFM flow by the maximum recommended free area velocity.
- Step #2** Select the most desirable louver size, from the free area table, that meets the minimum free area requirement.
- Step #3** Compare specified performance to the certified water penetration and pressure drop ratings.

Example:
 Given 15,000 CFM design flow

Step #1
 Minimum Free Area = $\frac{\text{Design CFM}}{\text{Maximum Recommended Velocity}}$

$$\frac{15,000}{779} = 19.26 \text{ sq.ft.}$$

Step #2
 From the free area table the approximate louver size is 84"W x 60"H (19.94 sq.ft.)

Velocity through Free Area FPM (meters/sec.)

Both maximum recommended Free Area Velocity and beginning of water penetration are 779 fpm at standard air - .075 lbs per cu.ft. The above water penetration data is based on mill finish 48"W x 48"H (1.22m x 1.22m) test size per AMCA Standard 511.

Cesco Products certifies that the model X4K3 louver shown herein is licensed to bear the AMCA Seal. The ratings shown are based on tests and procedures performed in accordance with AMCA Publication 511 and comply with the requirements of the AMCA Certified Ratings Program. The AMCA Certified Ratings Seal applies to air performance ratings and water penetration ratings.

