

## Stationary Louver Drainable Blade

### Application and Design

ESD-635HP is a weather louver designed to protect air intake and exhaust openings in building exterior walls. Design incorporates drain gutters in the head member and horizontal blades to channel water to the jambs where water is further channeled through vertical downspouts and out at the sloped sill. The ESD-635HP is an **AMCA CERTIFIED LOUVER** enabling designers to select and apply with confidence.



### Standard Construction

**Frame** . . . . . Heavy gauge extruded 6005-T5 & 6063-T5 aluminum, 6 in. x 0.081 in. nominal wall thickness

**Blades** . . . . . Drainable design, heavy gauge extruded 6063-T5 aluminum, 0.081 in. nominal wall thickness, positioned at 37° angles on approximately 4.25 in. centers

**Construction** . . . Mechanically fastened

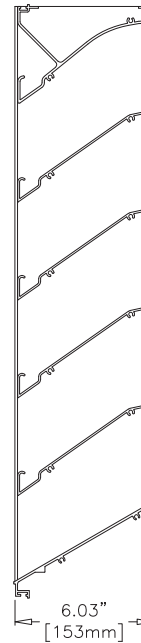
**Birdscreen** . . . . 3/4 in. x 0.051 in. flattened expanded aluminum in removable frame, inside mount (rear)

**Finish** . . . . . Mill

**Minimum Size** . . 12 in. W x 12 in. H

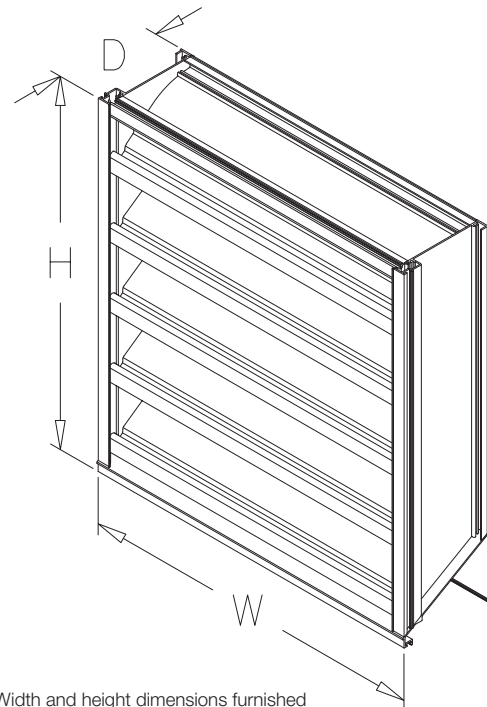
**Maximum Single**

**Section Size** . . . 48 in. W x 48 in. H



### Options (at additional cost)

- A variety of bird and insect screens
- Clip angles
- Blank off panel
- Extended sill
- Filter rack
- Flanged frame
- Glazing adaptor
- Security bars
- Welded construction
- A variety of architectural finishes including:
  - Clear anodize
  - Integral color anodize
  - Baked enamel paint
  - Kynar paint



\*Width and height dimensions furnished approximately 1/4 inch under size.

# PERFORMANCE DATA


# ESD-635HP

Stationary Louver Drainable Blade  
Extruded Aluminum

## Free Area Chart\* (Sq. ft.)

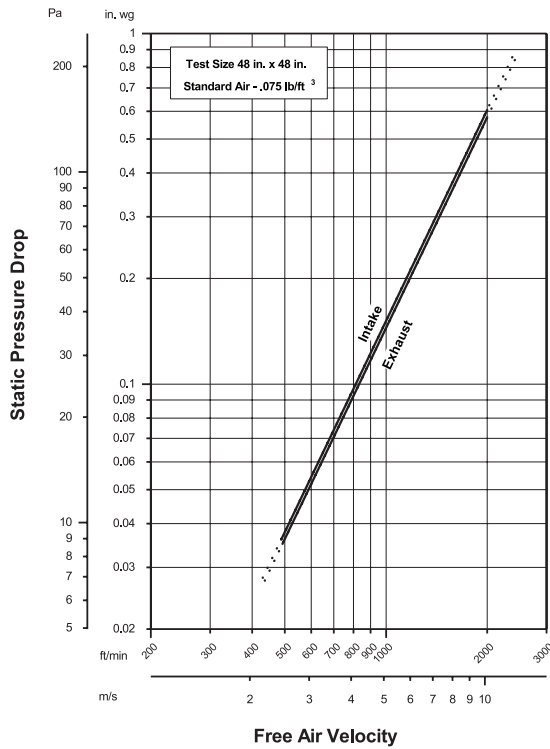
Louver Height Inches	Louver Width in Inches						
	12	18	24	30	36	42	48
12	0.27	0.44	0.60	0.76	0.92	1.08	1.24
18	0.60	0.96	1.32	1.67	2.03	2.38	2.74
24	0.89	1.42	1.94	2.47	2.99	3.52	4.04
30	1.22	1.94	2.66	3.38	4.10	4.81	5.53
36	1.56	2.47	3.39	4.31	5.22	6.14	7.05
42	1.84	2.93	4.01	5.10	6.18	7.27	8.35
<b>48</b>	<b>2.17</b>	<b>3.45</b>	<b>4.73</b>	<b>6.01</b>	<b>7.28</b>	<b>8.56</b>	<b>9.84</b>

\*Free areas as shown based on actual louver sizes



Greenheck Fan Corporation certifies that the ESD-635HP louvers shown herein are licensed to bear the AMCA Seal. The ratings shown are based on tests and procedures performed in accordance with AMCA Publication 511 and comply with the requirements of the AMCA Certified Ratings Program. The AMCA Certified Ratings Seal applies to air performance and water penetration ratings.

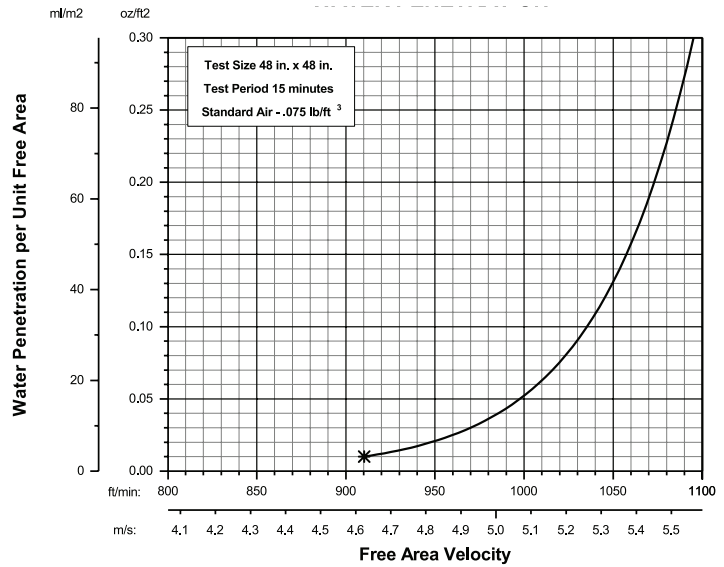
## Airflow Resistance (Standard Air - .075 lb/ft<sup>3</sup>)



Model ESD-635HP resistance to airflow (pressure drop) varies depending on louver application (air intake or air exhaust). Free area velocities (shown) are higher than average velocity through the overall louver size. See louver selection information. (Test Figure 5.5-6.5)

## Water Penetration (Standard Air - .075 lb/ft<sup>3</sup>)

Test size 48 in. x 48 in. Test duration of 15 min.



The AMCA Water Penetration Test provides a method for comparing various louver models and designs as to their efficiency in resisting the penetration of rainfall under specific laboratory test conditions. The beginning point of water penetration is defined as that velocity where the water penetration curve projects through .01 oz. of water (penetration) per sq. ft. of louver free area. **\*The beginning point of water penetration for Model ESD-635HP is above 910 fpm free area velocity.** These performance ratings do not guarantee a louver to be weatherproof or stormproof and should be used in combination with other factors including good engineering judgement in selecting louvers.

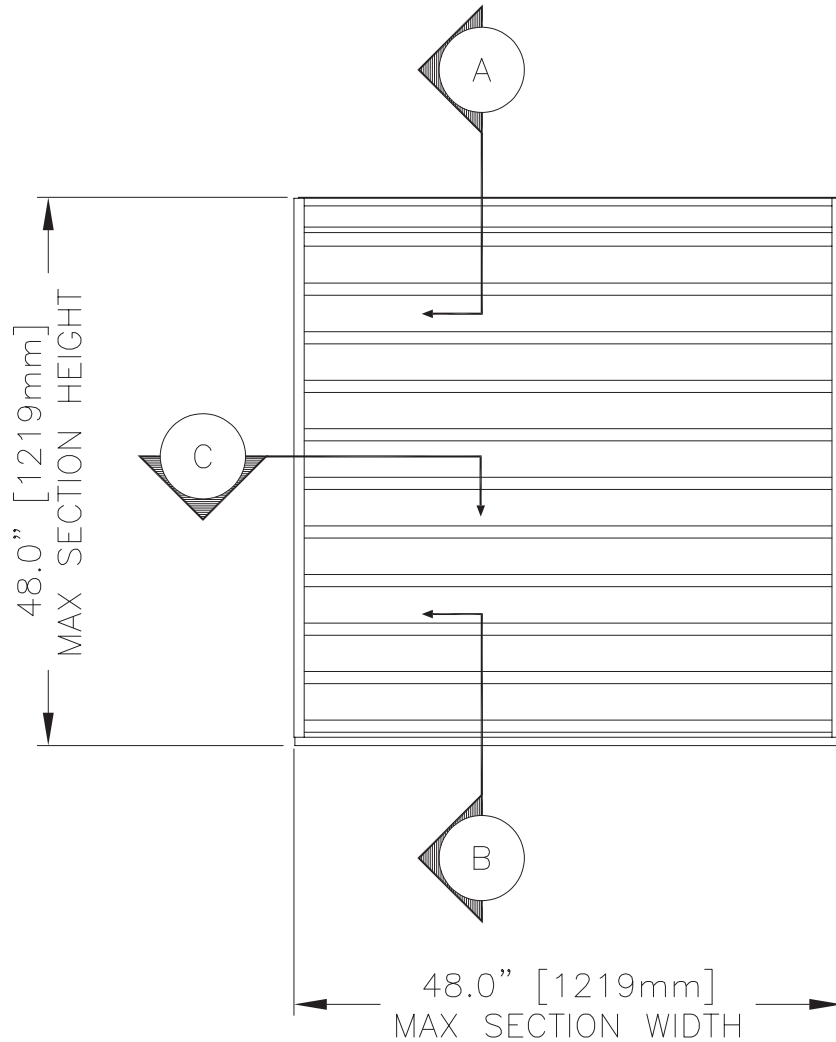
# INSTALLATION DETAILS

# ESD-635HP

## Maximum Size and Installation Information

Stationary Louver Drainable Blade  
Extruded Aluminum

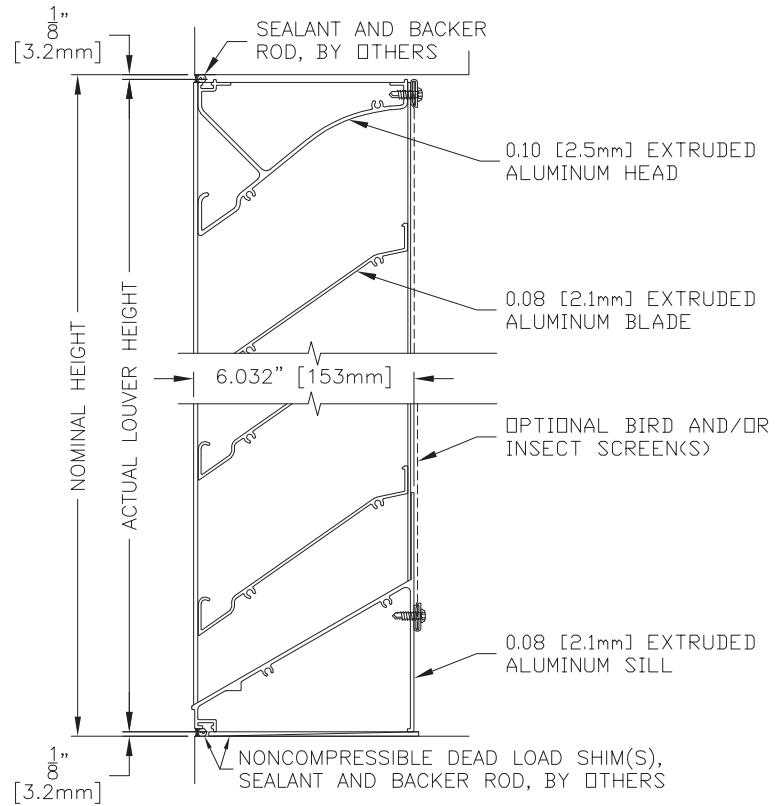
Maximum single section size for model ESD-635HP is 48 in. W x 48 in. H. The ESD-635HP is only available in a single section configuration in both width and height. For openings larger than 48 in. W x 48 in. H, consider using similar model ESD-635. Individual louver sections are designed to withstand a 25 PSF wind load (please consult Greenheck if the louvers must withstand higher wind-loads). Installation hardware is not provided by Greenheck unless indicated otherwise by Greenheck. Options and accessories including, but not limited to, screens, filter racks, and blank off panels are not subject to structural analysis unless indicated otherwise by Greenheck. Additional information on louver installation may be found in AMCA Publication #501, Louver Application Manual.



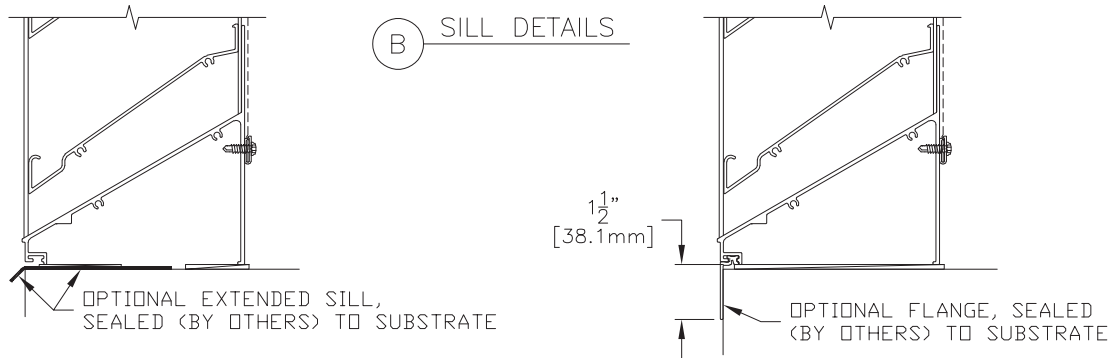
**Minimum Single Section Size**  
12 in. W x 12 in. H

**Maximum Single Section Size**  
48 in. W x 48 in. H

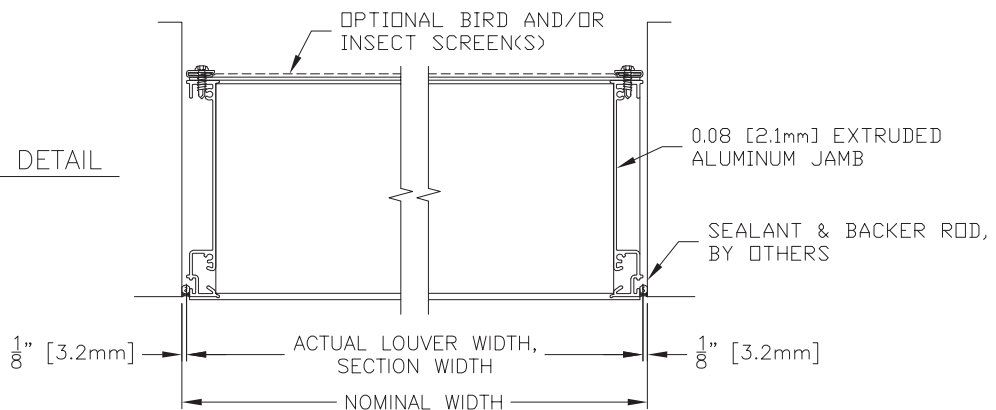
(A) HEAD DETAIL



(B) SILL DETAILS



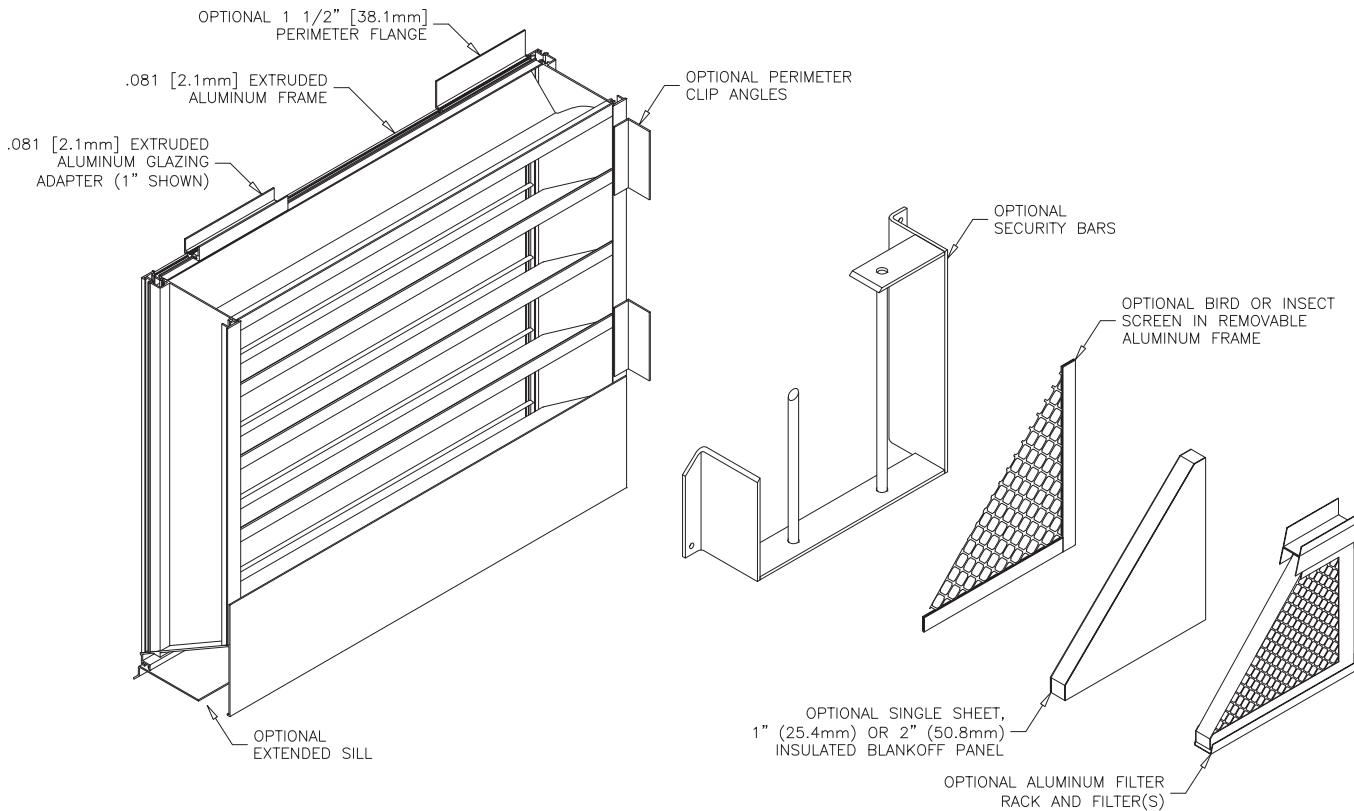
(C) JAMB DETAIL



# OPTION DRAWINGS

# ESD-635HP

Stationary Louver Drainable Blade  
Extruded Aluminum



## FINISHES

Finish Type	Description/Application	Color Selection	Standard Warranty (Aluminum)
<b>AAMA 2605</b> 100% Fluoropolymer (FEVE) 2-Coat 70% Kynar® (PVDF) 3-Coat 70% Kynar® (PVDF) 4-Coat 70% Kynar® (PVDF)	<b>"Best."</b> The premier finish for extruded aluminum. Tough, long-lasting coating has superior color retention and abrasive properties. Resists chalking, fading, chemical abrasion and weathering.	<b>Standard Colors:</b> Any of the 27 standard colors shown can be furnished in 70% or 50% Kynar®, 100% Fluoropolymer or Baked Enamel.	10 Years (20 Years Optional)
<b>AAMA 2604</b> 50% Kynar® / Acroflur®	<b>"Better."</b> Tough, long-lasting coating has excellent color retention and abrasive properties. Resists chalking, fading, chemical abrasion and weathering.	<b>Mica Colors:</b> Greenheck offers 6 standard Mica colors for 70% Kynar® or 100% Fluoropolymer.	5 Years
<b>AAMA 2603</b> Baked Enamel	<b>"Good."</b> Provides good adhesion and resistance to weathering, corrosion and chemical stain.	<b>Custom Colors:</b> Custom color matching is available. Consult your Greenheck representative for cost and/or lead-time implications if a custom color is required.	1 Year
<b>AA-M10C22A42</b> Integral Color Anodize	"Two-step" anodizing is produced by following the normal anodizing step with a second, colorfast process.	Light, Medium, Dark or Extra Dark Bronze; Champagne; Black	5 years
<b>AA-M10C22A41</b> Clear Anodize 215 R-1	Clear, colorless and hard oxide aluminum coating that resists weathering and chemical attack.	Clear	5 years
<b>AA-M10C22A31</b> Clear Anodize 204	Clear, colorless and hard oxide aluminum coating that resists weathering and chemical attack.	Clear	1 Year
<b>Prime Coat</b>	Louvers or architectural products shall be cleaned, pre-treated and receive a prime coat finish suitable for field painting. Greenheck does not recommend prime coat or field painting of materials.		n/a
<b>Mill</b>	Materials may be supplied in natural aluminum or galvanized steel finish when normal weathering is acceptable and there is no concern for color or color change.		n/a

Finishes meet or exceed AAMA 2605, AAMA 2604, and AAMA 2603 requirements. Please consult [www.greenheck.com](http://www.greenheck.com) for complete information on standard and extended paint warranties. Paint finish warranties are not applicable to steel products.



ESD-635HP  
August 2020

Copyright © 2020 Greenheck Fan Corporation

Greenheck Fan Corporation reserves the right to make product changes without notice.