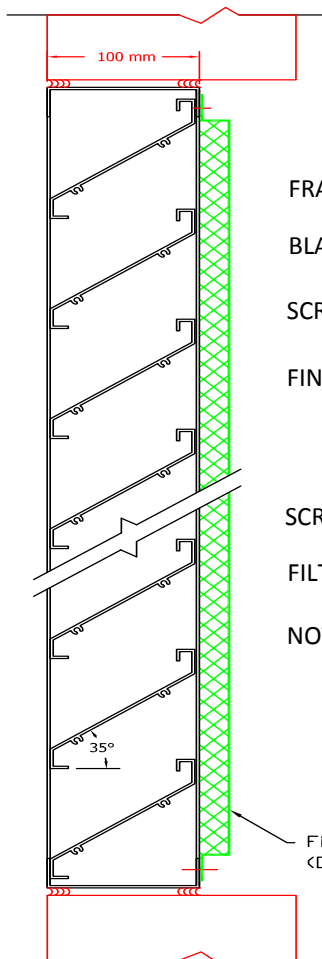


ARCHITECTURAL ALUMINUM LOUVERS

SAL-A04



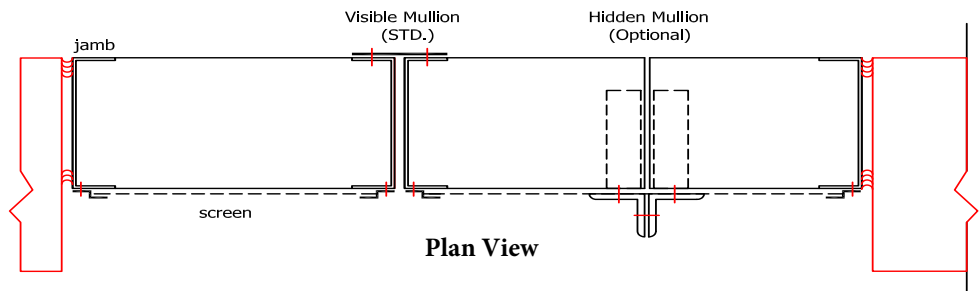
Vertical Section

STANDARD SPECIFICATIONS

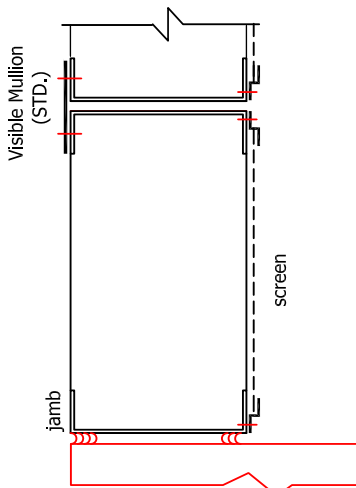
- FRAME: 4" X 0.071" (101MM X 1.8MM) FORMED ALUMINUM (6063-T5)
- BLADE: 0.080" (2.0MM) EXTRUDED ALUMINUM (6063-T5) 35°
- SCREEN: BIRD SCREEN- ½" SQUARE MESH X 0.050" WIRE DIA. (12 X 12 X1.5) MM
- FINISH: MILL

OPTIONS

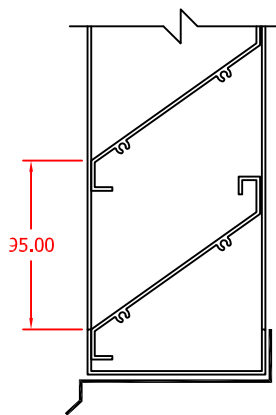
- SCREEN: INSECT SCREEN – 18 X 16 MESH ALUMINIUM OR ½ "X 0.063 (12.7 X 1.6) MM ALUMINIUM
- FILTER: 19 MM THICK WOVEN ALUMINUM MESH IN ALUMINIUM FRAME
- NOTE: LOUVERS MANUFACTURED ¼" (6.4 MM) UNDER OPENING SIZE, UNLESS OTHERWISE NOTED.



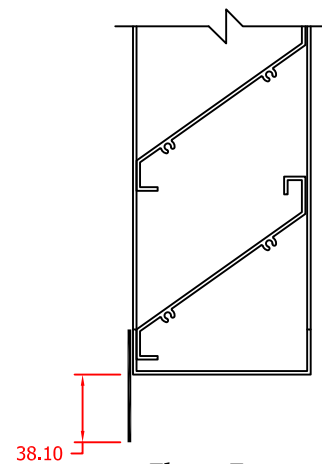
Plan View



Vertical Mullion



Sill Extension (Optional)



Flange Frame (Optional)

SAL-A04 (V1 - JANUARY 2020)

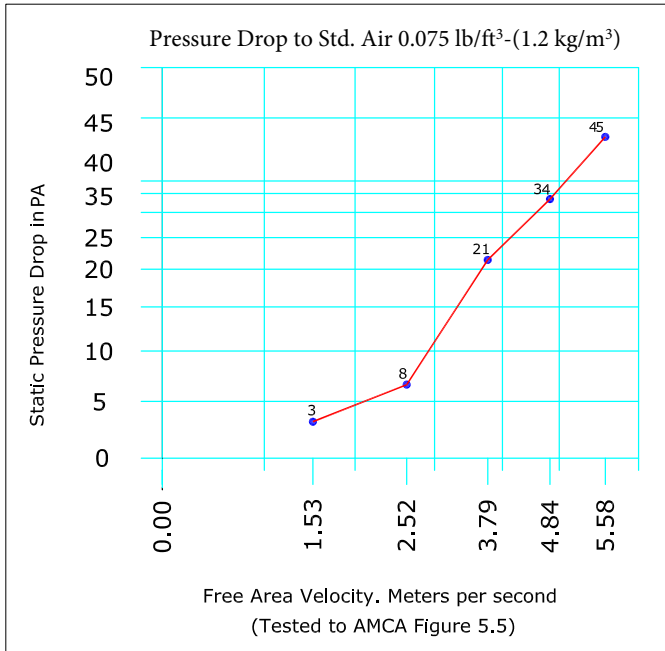


"Energy Industrial Company LLC Certifies that SAL-A04 shown herein is licensed to bear the AMCA Seal. The ratings shown are based on testes and procedures performed in accordance with AMCA 511 and comply with requirements of AMCA Certified Ratings Program. The AMCA Certified Ratings Seal applies to Air Performance ratings only"

ARCHITECTURAL ALUMINUM LOUVERS

SAL-A04

AIR PERFORMANCE



PRESSURE DROP (PA)	AIR FLOW (m ³ /s)	FREE AREA VELOCITY (m/s)
3	1.16	1.53
8	1.91	2.52
21	2.88	3.79
34	3.67	4.84
45	4.24	5.58

NOTES:

- Pressure Drop Data applies to test unit size 48" x 48" (1219 x 1219) mm only - Reported Pressure Drop is for intake mode .
- Performance data does not include the effects of bird screen or filter.
- All performance shown is at density of 0.075 lb/ft³ (1.2kg/m³)

FREE AREA CHART

Free Area in ft² / m²
Width in Inches / Meters

	18 0.46	24 0.61	30 0.76	36 0.91	42 1.07	48 1.22	54 1.37	60 1.52	66 1.68	72 1.83	78 1.98	84 2.13	90 2.29	96 2.44
18 0.46	0.98	1.32	1.67	2.01	2.35	2.69	3.03	3.37	3.72	4.06	4.40	4.74	5.08	5.42
24 0.61	0.09	0.12	0.15	0.19	0.22	0.25	0.28	0.31	0.35	0.38	0.41	0.44	0.47	0.50
24 0.61	1.33	1.79	2.25	2.71	3.18	3.64	4.10	4.56	5.02	5.49	5.95	6.41	6.87	7.33
30 0.76	0.12	0.17	0.21	0.25	0.30	0.34	0.38	0.42	0.47	0.51	0.55	0.60	0.64	0.68
30 0.76	1.83	2.46	3.10	3.73	4.37	5.00	5.64	6.27	6.91	7.54	8.18	8.82	9.45	10.09
36 0.91	0.17	0.23	0.29	0.35	0.41	0.47	0.52	0.58	0.64	0.70	0.76	0.82	0.88	0.94
36 0.91	2.14	2.89	3.63	4.38	5.12	5.87	6.61	7.36	8.11	8.85	9.60	10.34	11.09	11.83
42 1.07	0.20	0.27	0.34	0.41	0.48	0.55	0.62	0.68	0.75	0.82	0.89	0.96	1.03	1.10
42 1.07	2.57	3.47	4.36	5.26	6.15	7.05	7.95	8.84	9.74	10.63	11.53	12.42	13.32	14.21
48 1.22	0.24	0.32	0.41	0.49	0.57	0.66	0.74	0.82	0.91	0.99	1.07	1.16	1.24	1.32
48 1.22	2.98	4.02	5.06	6.10	7.14	8.18	9.21	10.25	11.29	12.33	13.37	14.41	15.44	16.48
54 1.37	0.28	0.37	0.47	0.57	0.66	0.76	0.86	0.95	1.05	1.15	1.24	1.34	1.44	1.53
54 1.37	3.32	4.48	5.63	6.79	7.94	9.10	10.25	11.41	12.56	13.72	14.87	16.03	17.18	18.34
60 1.52	0.31	0.42	0.52	0.63	0.74	0.85	0.95	1.06	1.17	1.28	1.38	1.49	1.60	1.71
60 1.52	3.82	5.15	6.48	7.80	9.13	10.46	11.79	13.12	14.45	15.78	17.11	18.43	19.76	21.09
66 1.68	0.36	0.48	0.60	0.73	0.85	0.97	1.10	1.22	1.34	1.47	1.59	1.71	1.84	1.96
66 1.68	4.14	5.59	7.03	8.47	9.91	11.36	12.80	14.24	15.68	17.13	18.57	20.01	21.45	22.90
72 1.83	0.39	0.52	0.65	0.79	0.92	1.06	1.19	1.32	1.46	1.59	1.73	1.86	2.00	2.13
72 1.83	4.57	6.15	7.74	9.33	10.92	12.51	14.10	15.69	17.28	18.86	20.45	22.04	23.63	25.22
78 1.98	0.42	0.57	0.72	0.87	1.02	1.16	1.31	1.46	1.61	1.75	1.90	2.05	2.20	2.35
78 1.98	4.99	6.72	8.46	10.19	11.93	13.66	15.40	17.13	18.87	20.60	22.34	24.07	25.81	27.54
84 2.13	0.46	0.62	0.79	0.95	1.11	1.27	1.43	1.59	1.75	1.92	2.08	2.24	2.40	2.56
84 2.13	5.30	7.15	8.99	10.84	12.68	14.53	16.37	18.22	20.06	21.91	23.75	25.60	27.44	29.29
90 2.29	0.49	0.66	0.84	1.01	1.18	1.35	1.52	1.69	1.87	2.04	2.21	2.38	2.55	2.72
90 2.29	5.80	7.82	9.84	11.85	13.87	15.89	17.91	19.93	21.95	23.96	25.98	28.00	30.02	32.04
96 2.44	0.54	0.73	0.91	1.10	1.29	1.48	1.67	1.85	2.04	2.23	2.42	2.60	2.79	2.98
96 2.44	6.15	8.29	10.42	12.56	14.70	16.84	18.98	21.12	23.26	25.40	27.54	29.68	31.82	33.96
96 2.44	0.57	0.77	0.97	1.17	1.37	1.57	1.77	1.96	2.16	2.36	2.56	2.76	2.96	3.16

Opening that requires multiple louver panels in both width and height will require internal structural supports. It is recommended that; large openings be divided with structural members so that the louver will span either width or height with a single panel. Unusually high wind loading may require structural supports non-multiple wide and multiple high assemblies. Structural Supports and mounting accessories are not supplied as a standard.

SAL-A04 (V1) JANUARY 2020



"Energy Industrial Company LLC Certifies that SAL-A04 shown herein is licensed to bear the AMCA Seal. The ratings shown are based on testes and procedures performed in accordance with AMCA 511 and comply with requirements of AMCA Certified Ratings Program. The AMCA Certified Ratings Seal applies to Air Performance ratings only"