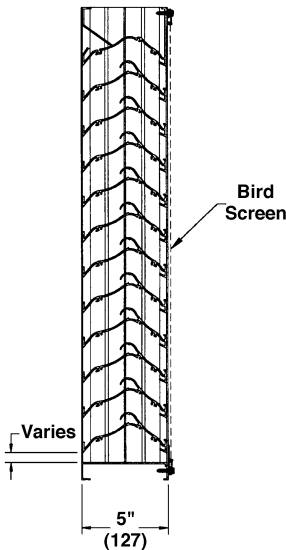
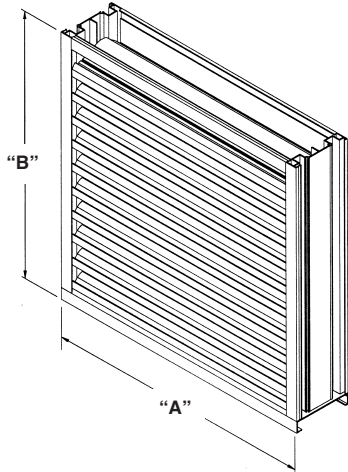


5DDWRG WIND-DRIVEN RAIN RESISTANT STATIONARY LOUVER EXTRUDED ALUMINUM



STANDARD CONSTRUCTION

FRAME

5" (127) deep, 6063T6 extruded aluminum with .081" (2.1) nominal wall thickness.

BLADES

6063T6 extruded aluminum .063" (1.6) nominal wall thickness. Double drainable blades are sightproof and spaced approximately 2" (51) center to center.

SCREEN

5/8" x .040" (16 x 1) expanded flattened aluminum bird screen in removable frame. Screen adds approximately 1/2" (13) to louver depth.

FINISH

Mill.

MINIMUM SIZE

12"w x 12"h (305 x 305).

APPROXIMATE SHIPPING WEIGHT

7 lbs. per sq. ft. (34.2 kg/m²)

MAXIMUM FACTORY ASSEMBLY SIZE

Single sections shall not exceed 120" x 90"h (3048 x 2286) or 90"w x 120"h (2286 x 3048). Louvers larger than the maximum single section size will require field assembly of smaller sections.

SUPPORTS

Louvers may be provided with rear mounted blade supports that increase overall louver depth depending on louver size, assembly configuration or windload.

Consult Reliable for additional information.

FEATURES

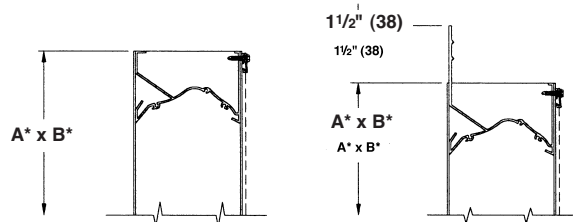
- Closely spaced horizontal blades minimize the penetration of wind-driven rain.
- Wind-Driven Rain performance tested in accordance with AMCA 500-L
- Published performance ratings based on testing in accordance with AMCA Publication 511.
- 47% Free Area.
- Excellent pressure drop performance.
- Aluminum construction for low maintenance and high resistance to corrosion.
- TAS203 Cycle Pressure- 120psf

VARIATIONS

- Extended sill.
- Hinged frame.
- Front or rear security bars.
- Filter racks.
- Installation angles.
- Universal sleeve.
- Blank of panels.
- Integral flange.
- A variety of bird and insect screens.
- Selection of finishes: prime coat, baked enamel (modified fluoropolymer), epoxy, Pearledize 50 & 70, PVDF, clear and color anodize. (Some variation in anodize color consistency is possible).

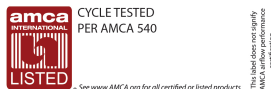
Consult Reliable for other special requirements.

FRAME CONSTRUCTION



Dimensions in inches, parenthesis () indicate millimeters.

*Units furnished 1/4" (6) smaller than given opening dimensions.



Reliable Products certifies that the 5DDWRG shown herein is approved to bear the AMCA Listing Label. The ratings shown are based on tests and procedures performed in accordance with AMCA Publications and comply with the requirements of the AMCA Listing Label Program. The AMCA Listing Label applies to Wind Borne Debris Impact Resistant Louvers.



5DDWRG

WIND-DRIVEN RAIN PERFORMANCE

Test size is 1m x 1m (39" x 39") core area, 1.04m x 1.12m (41" x 44") nominal. Free Area of test louver is 5.45 ft² (.51m²).

29 mph (47 kph) wind & 3" (76) per hour rain conditions

50 mph (80 kph) wind & 8" (203) per hour rain conditions

Table with 6 columns: Core Velocity, Airflow cfm, Free Area Velocity, Effectiveness Ratio, Class, Discharge Loss Class Intake. Rows show performance for 29 mph conditions.

Table with 6 columns: Core Velocity, Airflow cfm, Free Area Velocity, Effectiveness Ratio, Class, Discharge Loss Class Intake. Rows show performance for 50 mph conditions.

NOTES

- 1. Core area is the open area of the louver face...
2. Free Area of test size is calculated per AMCA standard 500-L.
3. Wind Driven Rain Penetration Classes:

Table showing Class Effectiveness: A 1 to .99, B 0.989 to 0.95, C 0.949 to 0.80, D Below 0.8

- 4. Intake Discharge Loss Class 2

Discharge Loss Coefficient is calculated by dividing a louvers' actual airflow rate vs. a theoretical airflow for the opening. It provides an indication of the louvers' airflow characteristics.

Discharge Loss Classes:

Class Discharge Loss Coefficient

- 1 0.4 and above
2 0.3 to 0.399
3 0.2 to 0.299
4 0.199 and below

(The higher the coefficient, the less resistance to airflow.)

5. The AMCA Wind Driven Rain Test is performed in a laboratory environment and incorporates controlled wind, water and system airflow effects. In actual field installations, storms may create conditions not considered by the AMCA test.

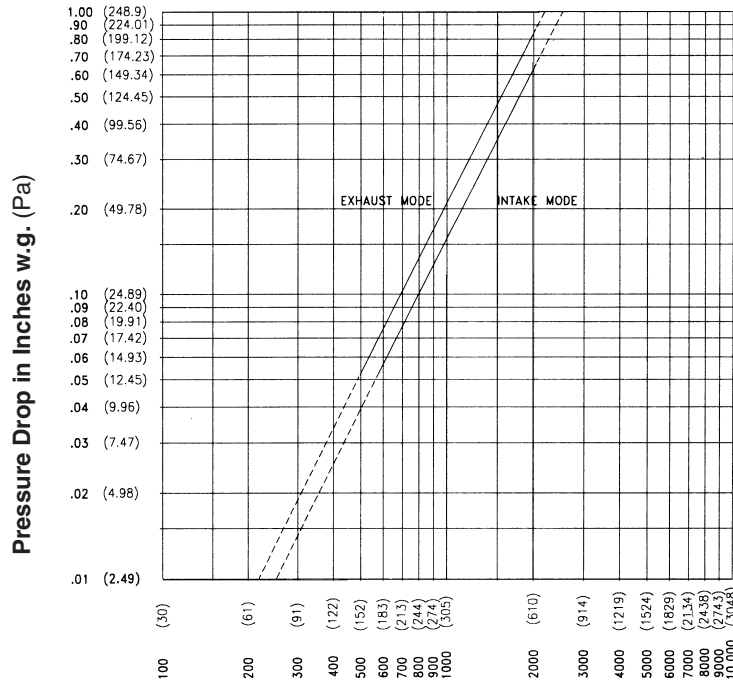
FREE AREA GUIDE

Free Area Guide shows free area in ft² and m² for various sizes of 5DDWRG. Width - Inches and Meters

Large data table with Height - Inches and Meters on the y-axis and various width values on the x-axis. It provides free area values in both square feet and square meters.

PRESSURE DROP

Test size 48" wide x 48" high (1219 x 1219).



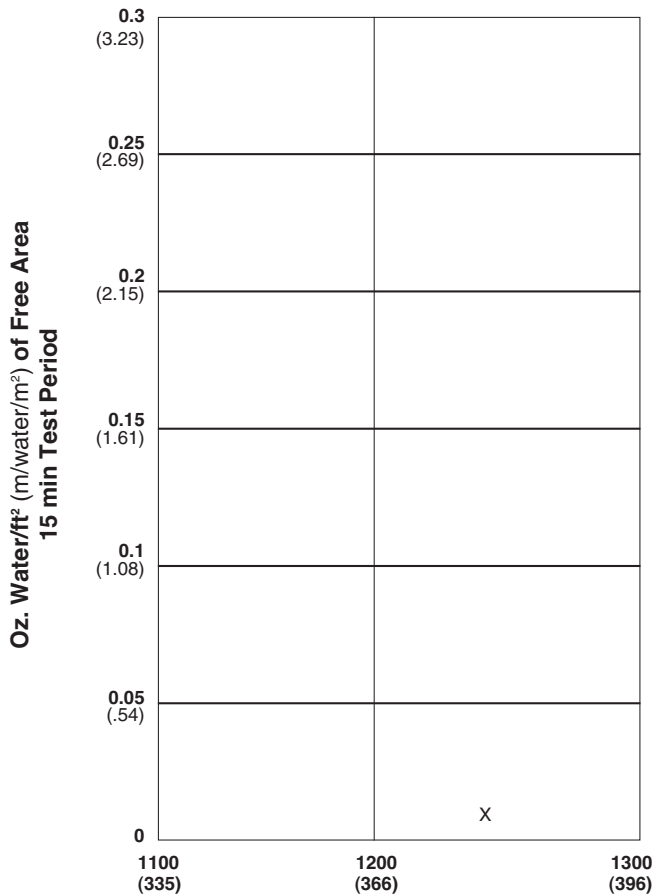
Ratings do not include the effect of a bird screen.

Air Velocity in feet (meters) per minute through Free Area
(Data corrected to standard air density and AMCA figure tested to 5.5)

WATER PENETRATION GRAPH

Test size 48" x 48" (1219 x 1219)

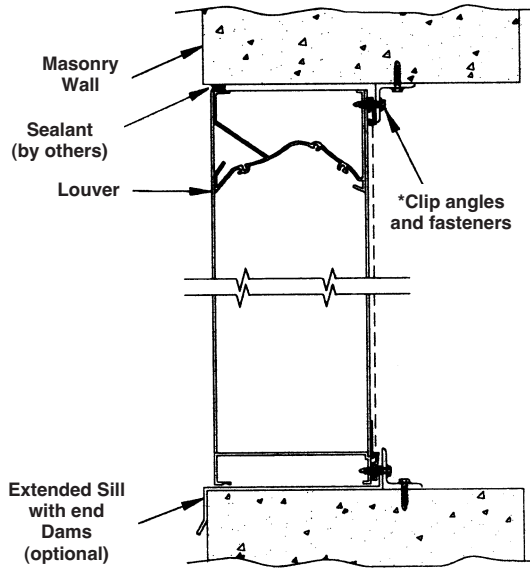
Beginning point of water penetration at .01 oz./sq. ft. is above 1250 fpm (381 m/min.)



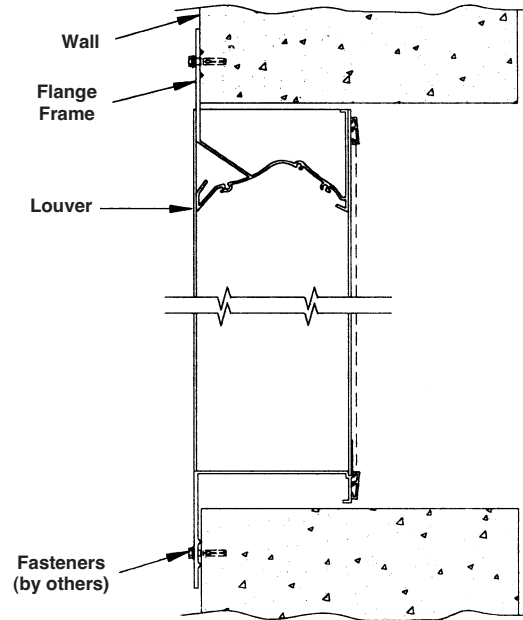
Reliable Products certifies that the louver shown herein is licensed to bear the AMCA Seal. The ratings shown are based on tests and procedures performed in accordance with AMCA Publication 511 and comply with the requirements of the AMCA Certified Ratings Program. The AMCA Certified Ratings Seal applies to air performance ratings, water penetration ratings and wind driven rain ratings only.

TYPICAL INSTALLATION DETAILS

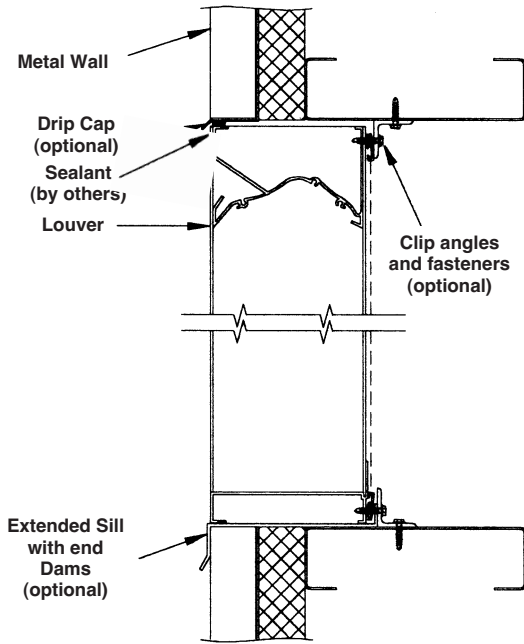
Masonry Wall



Flange Mount



Metal Panel Wall



Wood Installation

