

### FLORIDA BUILDING CODE APPROVED DRAINABLE LOUVER

<b>Visible Mullion Louver Type</b> .....	K6744X
<b>Material</b> .....	Extruded Aluminum (Alloy 6063-T5)
<b>Stationary Blade</b> .....	0.081 in. (2.06 mm)
<b>Frame</b> .....	0.081 in. (2.06 mm)
<b>Louver Depth</b> .....	4 in. (101.6 mm)
<b>Blade Angle</b> .....	35°
<b>Free Area – 4 ft. x 4 ft. Unit</b> .....	8.92 sq. ft. (0.83 sq m)
<b>Percent Free Area</b> .....	55.8%
<b>Free Area Velocity at Beginning Point of Water Penetration – 0.01 oz H<sub>2</sub>O/sq. ft. Free Area</b> .....	989 fpm (5.02 m/s)
<b>Air Volume Flow Rate at Beginning Point of Water Penetration – 4 ft. x 4 ft. Unit</b> .....	8,822 cfm (4.164 m <sup>3</sup> /s)
<b>Pressure Drop at Beginning Point of Water Penetration</b> .....	0.16 in. H <sub>2</sub> O (0.040 kPa)
<b>Maximum Qualified Wind Design Load*</b> .....	+/- 200 PSF (9.6 kPa)



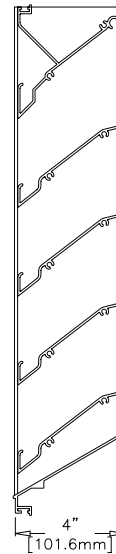
IMPACT RESISTANT LOUVER  
Basic Protection Level D

See www.AMCA.org for all certified or listed products

This label does not signify AMCA airflow performance certification.



Florida Building Code approved for use in the High Velocity Hurricane Zone (HVHZ)



### RECOMMENDED SPECIFICATION

#### GENERAL

Furnish and install where indicated on plans or described in schedules drainable Louver Type K6744X as designed and manufactured by The Airlite Company LLC, Schofield, Wisconsin. Louvers shall be Florida Building Code approved for use in the High Velocity Hurricane Zone (HVHZ). Furnish louvers with bird screen, insect screen, sill pans, supports, installation hardware and finishes as specified and as required for a complete installation.

#### SUBMITTALS

Manufacturer shall submit shop drawings incorporating key plans, elevations, sections and details showing profiles, angles and spacing of louver blades and frames; unit dimensions related to wall openings and construction; and, anchorage details and locations. For each type of product specified, submit free area, air performance and water penetration ratings determined in accordance with AMCA Standard 500-L and licensed under the AMCA Certified Ratings Program, as well as tested in accordance with AMCA 540 Test Method for Louvers Impacted by Wind Borne Debris. Include Florida Building Code Approval for use in the High Velocity Hurricane Zone (HVHZ) as means to demonstrate compliance with applicable codes. Provide samples of manufacturer's finish and color charts showing the full range of colors available.

#### PRODUCTS

Louvers shall be drainable Louver Type K6744X with visible mullions and shall be Florida Building Code Approved. Louvers shall be 4-inches (101.6 mm) deep and assembled entirely from extruded aluminum components. Blades and frames shall be 0.081-inch (2 mm) thick aluminum, alloy 6063-T5. Blades shall be stationary, incorporate drainable gutters and be spaced approximately 3 1/4-inches (82.6 mm) on center. Jamb frames shall incorporate drainable gutters to ensure resistance to water penetration.

#### STRUCTURAL DESIGN CRITERIA

Louver Type K6744X is tested and qualified per the following Florida test protocols: TAS 201 (Large Missile Impact), TAS 202 (Uniform Static Air Pressure) and TAS 203 (Cyclic Wind Loading). In addition, louvers shall be tested to wind forces up to 200 psf. Louvers must be secured to a structural substrate in accordance with Florida Building Code approved drawings. In addition, the structural substrate must be designed to accommodate the point loads transferred by the louvers when subject to the design wind loads. Structural reinforcing members along with any associated installation hardware is not provided by Airlite unless indicated otherwise by Airlite. Options and accessories are not subject to structural analysis unless indicated otherwise by Airlite.

#### PERFORMANCE RATINGS

FREE AREA:	8.92 Square Feet (0.83 m <sup>2</sup> )
MINIMUM FREE AREA VELOCITY at Beginning Point of Water Penetration:	989 fpm (5.02 m/s)
MINIMUM AIR VOLUME FLOW RATE at Beginning Point of Water Penetration:	8,822 cfm (4.164 m <sup>3</sup> /s)
MAXIMUM STATIC PRESSURE at Beginning Point of Water Penetration:	0.16 in. H <sub>2</sub> O (0.040 kPa)

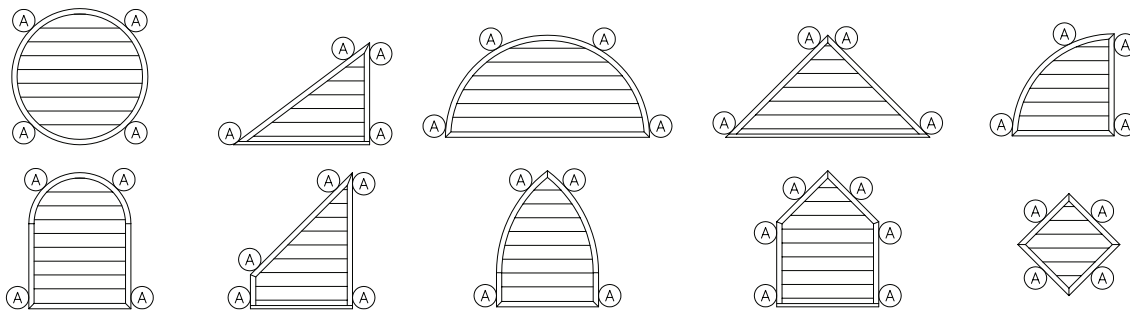
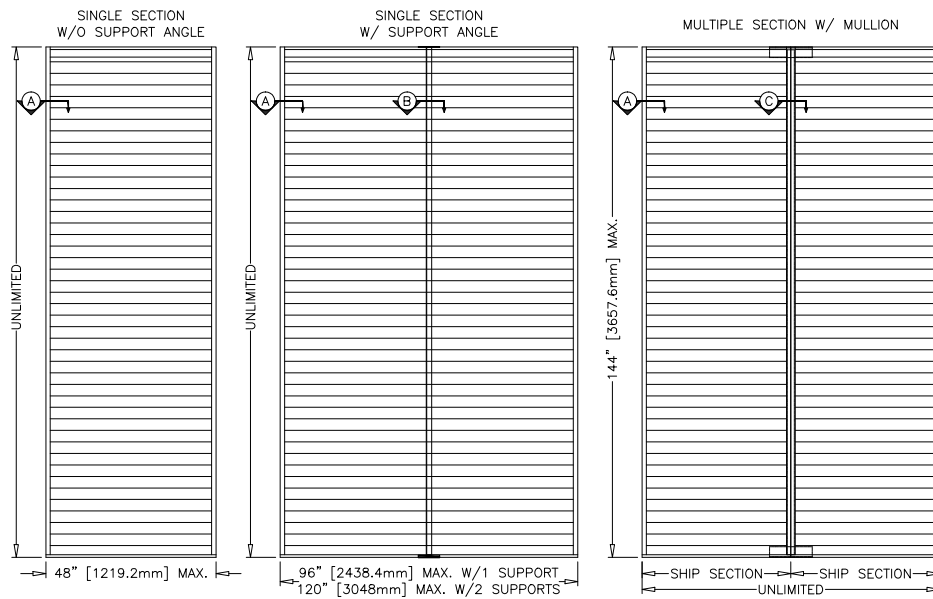
See page 6 for complete finish options

\*UL Classified as a Wind Restrictive Building Component in accordance with ASTM E330-02, *Standard Test Method for Structural Performance of Exterior Windows, Doors, Skylights, and Curtain Walls by Uniform Static Air Pressure Difference* (Florida Building Code TAS-202-94).

# LOUVER TYPE K6744X PRODUCT DESCRIPTION & DETAILS

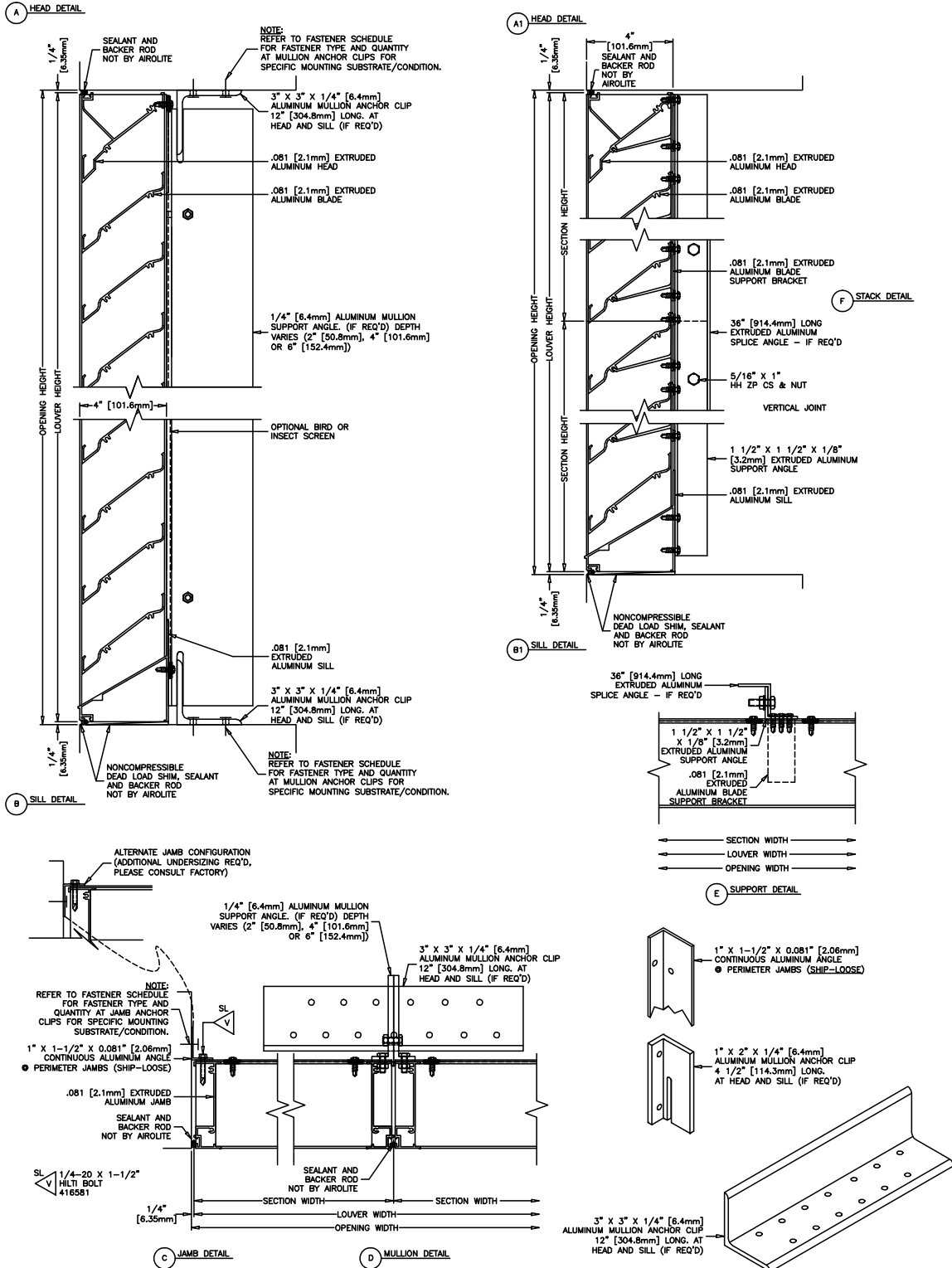
**AIROLITE LOUVER TYPE K6744X** is a 4-inch (101.6 mm) deep, drainable louver that is Florida Building Code approved for use in the Wind-Borne Debris Zone and the High Velocity Hurricane Zone (HVHZ). Louver Type K6744X is tested and certified per the following Florida test protocols: TAS 201 (Large Missile Impact), TAS 202 (Uniform Static Air Pressure) and TAS 203 (Cyclic Wind Loading). Drainable louvers incorporate gutters in the front edge of each blade and jamb frame to prevent water droplets from cascading from blade to blade and from becoming entrained in the intake air flow. Consequently, Louver Type K6744X is a highly effective louver with AMCA Licensed air performance and water penetration ratings, as well as tested in accordance with AMCA 540 Test Method for Louvers Impacted by Wind Borne Debris that enable designers to select and specify this product with confidence. Please contact your local Airlite representative or the factory for assistance with the layout and design of support systems when required.

## QUALIFIED SHAPES



Ⓐ Anchor points

# LOUVER TYPE K6744X PRODUCT DETAILS

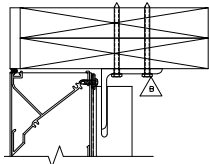


**Minimum Section Size:**  
12 in. (30 cm) W x 9 in. (23 cm) H

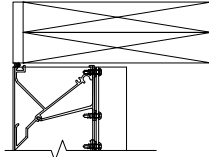
**Maximum Section Size:**  
120 in. (305 cm) W or 144 in. (366 cm) H  
(limited to 70 sq. ft.)

# LOUVER TYPE K6744X INSTALLATION DETAILS

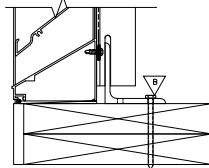
## WOOD OPENING



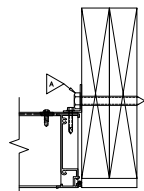
(A) HEAD DETAIL - MULLION



(A1) HEAD DETAIL - SUPPORT

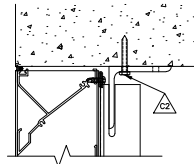


(B) SILL DETAIL

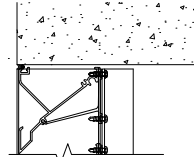


(C) JAMB DETAIL

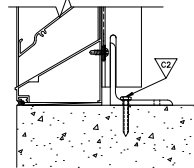
## MASONRY OPENING



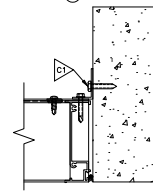
(A) HEAD DETAIL - MULLION



(A1) HEAD DETAIL - SUPPORT

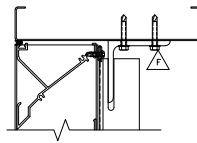


(B) SILL DETAIL

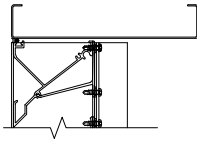


(C) JAMB DETAIL

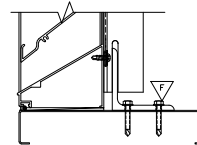
## STEEL STUD OPENING



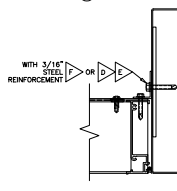
(A) HEAD DETAIL - MULLION



(A1) HEAD DETAIL - SUPPORT

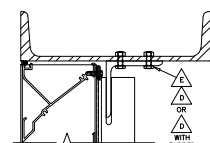


(B) SILL DETAIL

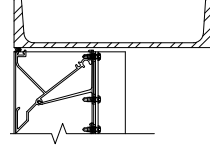


(C) JAMB DETAIL

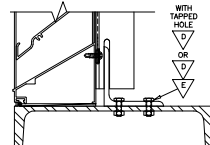
## STRUCTURAL STEEL OPENING



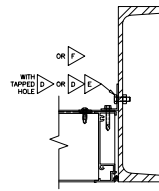
(A) HEAD DETAIL - MULLION



(A1) HEAD DETAIL - SUPPORT



(B) SILL DETAIL



(C) JAMB DETAIL

FASTENER SCHEDULE (FIELD INSTALLED - NOT BY AIROLITE)

MOUNTING SUBSTRATE	FASTENER TYPE	DESCRIPTION	ANCHOR CLIP LOCATION	QUANTITY	MIN. EMBED.	MIN. EDGE DIST.	SPACING
WOOD	A	1/2" DIA. LAG SCREW	JAMB	VARIES	3"	2 1/2"	6.5"
WOOD	B	1/4" DIA. LAG SCREW	VERT. MULLION (HEAD/SILL)	12 PER CLIP	3"	1/2"	2"
CONCRETE	C1	1/4" DIA. TAPCON ANCH.	JAMB	VARIES	1.25"	1"	3.25"
CONCRETE	C2	1/4" DIA. TAPCON ANCH.	VERT. MULLION (HEAD/SILL)	7 PER CLIP	1.75"	2.5"	2"
MASONRY BLOCK	C1	1/4" DIA. TAPCON ANCH.	JAMB	VARIES	1.25"	1"	3.25"
MASONRY BLOCK	C2	1/4" DIA. TAPCON ANCH.	VERT. MULLION (HEAD/SILL)	7 PER CLIP	1.75"	2.5"	2"
STEEL STUD	D & E	1/4" DIA. BOLT & NUT	JAMB	VARIES	THRU BOLT	1/2"	6.5"
STEEL STUD (3/16" STEEL REINFORCED)	F	1/4" DIA. DRILL FLEX	JAMB	VARIES	FULL	1/2"	6.5"
STEEL STUD	G	1/4" DIA. DRILL FLEX	VERT. MULLION (HEAD/SILL)	12 PER CLIP	FULL	1/2"	2"
STRUCTURAL STEEL	D & E	1/4" DIA. BOLT & NUT	JAMB	VARIES	THRU BOLT	1/2"	6.5"
STRUCTURAL STEEL	D	1/4" DIA. BOLT	JAMB (FIELD DRILL & TAP HOLE)	VARIES	FULL	1/2"	6.5"
STRUCTURAL STEEL	F	1/4" DIA. DRILL FLEX	JAMB	VARIES	FULL	1/2"	6.5"
STRUCTURAL STEEL	D & E	1/4" DIA. BOLT & NUT	VERT. MULLION (HEAD/SILL)	4 PER CLIP	THRU BOLT	1/2"	6.5"
STRUCTURAL STEEL	D	1/4" DIA. BOLT	VERT. MULLION (HEAD/SILL) FIELD DRILL & TAP HOLE	4 PER CLIP	FULL	1/2"	6.5"
STRUCTURAL STEEL	F	1/4" DIA. DRILL FLEX	JAMB	VARIES	FULL	1/2"	6.5"

### GENERAL NOTES:

- IT SHALL BE THE RESPONSIBILITY OF THE PERMIT HOLDER TO VERIFY THE STRUCTURAL INTEGRITY OF THE EXISTING STRUCTURE TO SUPPORT THE LOADS SUPERIMPOSED BY THE LOUVERS.
- INSTALLER TO PROVIDE SEPARATION OF DISSIMILAR MATERIALS AS REQUIRED.
- WOOD SUBSTRATE TO BE MINIMUM G = 0.42 DENSITY.
- 4A. CONCRETE SUBSTRATE TO BE MINIMUM 3,192 PSI CONCRETE OR 3,192 PSI GROUT FILLED ASTM C-90 HOLLOW BLOCK AT HEAD/SILL MULLION ANCHORS.
- 4B. CONCRETE SUBSTRATE TO BE MINIMUM 3,192 PSI CONCRETE OR ASTM C-90 HOLLOW BLOCK AT JAMB ANCHORS.
- STEEL STUD OPENINGS (16 GA. MINIMUM THICKNESS) TO BE MINIMUM Fy = 33 ksi.
- STRUCTURAL STEEL OPENINGS (1/4" MINIMUM THICKNESS) TO BE MINIMUM Fy = 36 ksi.

# LOUVER TYPE K6744X PERFORMANCE RATINGS

## FREE AREA CHART - in square feet

Louver Height Inches	Louver Width in Inches																		
	12	18	24	30	36	42	48	54	60	66	72	78	84	90	96	102	108	114	120
9	0.15	0.25	0.35	0.44	0.54	0.64	0.74	0.81	0.91	1.01	1.10	1.20	1.30	1.37	1.47	1.57	1.67	1.76	1.86
12	0.30	0.49	0.68	0.87	1.07	1.26	1.45	1.59	1.79	1.98	2.17	2.36	2.56	2.70	2.89	3.08	3.28	3.47	3.66
18	0.54	0.88	1.23	1.58	1.93	2.28	2.62	2.88	3.23	3.58	3.93	4.28	4.62	4.88	5.23	5.58	5.93	6.28	6.62
24	0.79	1.30	1.81	2.32	2.83	3.33	3.84	4.23	4.74	5.25	5.76	6.27	6.78	7.16	7.67	8.18	8.69	9.20	9.71
30	1.04	1.71	2.38	3.06	3.73	4.40	5.08	5.58	6.26	6.93	7.60	8.28	8.95	9.45	10.13	10.80	11.47	12.15	12.82
36	1.29	2.13	2.97	3.81	4.65	5.49	6.33	6.96	7.80	8.64	9.48	10.31	11.15	11.78	12.62	13.46	14.30	15.14	15.98
42	1.55	2.55	3.55	4.56	5.56	6.56	7.57	8.32	9.32	10.32	11.33	12.33	13.33	14.09	15.09	16.09	17.10	18.10	19.10
48	1.82	3.01	4.19	5.37	6.55	7.74	8.92	9.81	10.99	12.17	13.35	14.54	15.72	16.61	17.79	18.97	20.16	21.34	22.52
54	2.08	3.44	4.79	6.14	7.49	8.85	10.20	11.21	12.56	13.92	15.27	16.62	17.97	18.99	20.34	21.69	23.04	24.40	25.75
60	2.33	3.85	5.36	6.87	8.39	9.90	11.42	12.55	14.06	15.58	17.09	18.61	20.12	21.26	22.77	24.28	25.80	27.31	28.82
66	2.58	4.26	5.94	7.61	9.29	10.97	12.64	13.90	15.58	17.25	18.93	20.60	22.28	23.54	25.21	26.89	28.57	30.24	31.92
72	2.84	4.68	6.52	8.36	10.20	12.05	13.89	15.27	17.11	18.95	20.79	22.64	24.48	25.86	27.70	29.54	31.38	33.22	35.07
78	3.09	5.10	7.10	9.11	11.11	13.12	15.12	16.63	18.63	20.64	22.65	24.65	26.66	28.16	30.17	32.17	34.18	36.18	38.19
84	3.35	5.53	7.70	9.88	12.05	14.23	16.40	18.03	20.21	22.38	24.56	26.73	28.91	30.54	32.71	34.89	37.06	39.23	41.41
90	3.64	6.00	8.37	10.73	13.09	15.45	17.82	19.59	21.95	24.31	26.67	29.04	31.40						
96	3.88	6.40	8.92	11.44	13.95	16.47	18.99	20.88	23.40	25.91	28.43	30.95	33.47						
102	4.13	6.81	9.49	12.17	14.85	17.53	20.21	22.22	24.90	27.58	30.26	32.94	35.62						
108	4.38	7.23	10.07	12.91	15.76	18.60	21.44	23.58	26.42	29.26	32.11	34.95	37.79						
114	4.64	7.65	10.66	13.67	16.68	19.68	22.69	24.95	27.96	30.97	33.98	36.99	40.00						
120	4.89	8.07	11.24	14.41	17.58	20.76	23.93	26.31	29.48	32.66	35.83	39.00	42.18						
126	5.23	8.63	12.02	15.41	18.81	22.20	25.60	28.14	31.53	34.93	38.32	41.72	45.11						
132	5.56	9.16	12.77	16.37	19.97	23.58	27.18	29.89	33.49	37.10	40.70	44.31	47.91						
138	5.87	9.68	13.48	17.29	21.10	24.91	28.71	31.57	35.37	39.18	42.99	46.80	50.60						
144	6.18	10.19	14.21	18.22	22.23	26.24	30.25	33.26	37.27	41.28	45.29	49.30	53.31						



The Airolite Company, LLC certifies that Louver Type K6744X shown herein is licensed to bear the AMCA seal. The ratings shown are based on tests and procedures performed in accordance with AMCA Publication 511 and comply with the requirements of the AMCA Certified Ratings Program. The AMCA Certified Ratings Seal applies only to Air Performance and Water Penetration ratings.



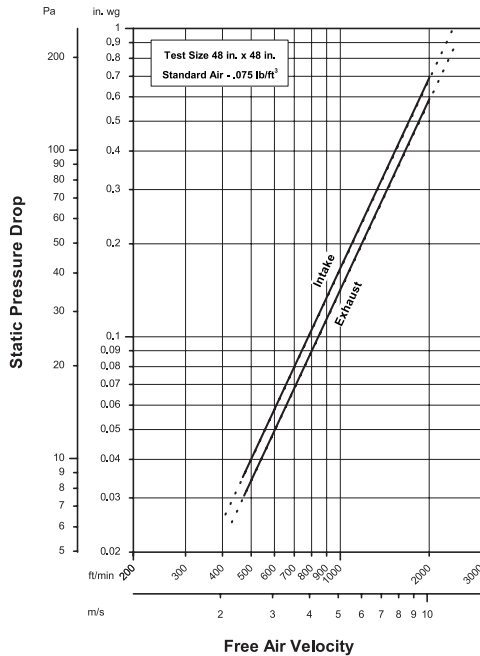
IMPACT RESISTANT LOUVER  
Basic Protection Level D

See www.AMCA.org for all certified or listed products

This label does not signify AMCA airflow performance certification.

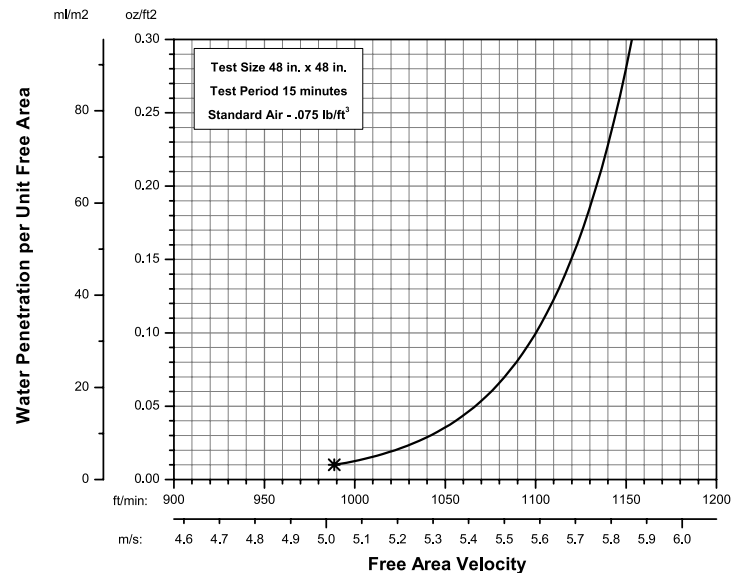
The Airolite Company, LLC certifies that Louver Type K6744X shown herein is approved to bear the AMCA Listing Label. The ratings shown are based on tests and procedures performed in accordance with AMCA Publications and comply with the requirements of the AMCA Listing Label Program. The AMCA Listing Label applies to Wind Borne Debris Impact Resistant Louvers.

## AIRFLOW RESISTANCE (Standard Air - .075 lb./ft.<sup>3</sup>)



Louver Type K6744X resistance to airflow is shown with louver blades fully open. Resistance (pressure drop) varies depending on louver application (air intake or air exhaust). Free area velocities (shown) are higher than average velocity through the overall louver size. (Test Figure: 5.5)

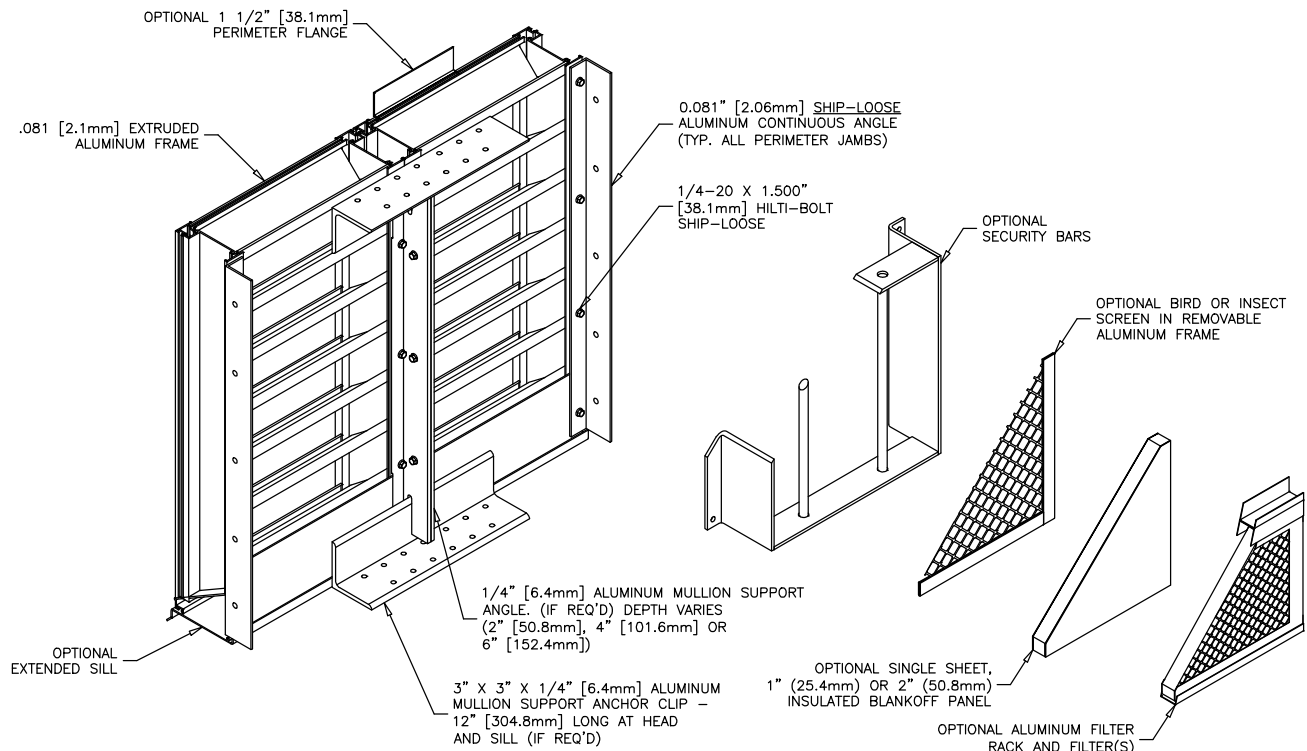
## WATER PENETRATION (Standard Air - .075 lb./ft.<sup>3</sup>; Test Size - 48 in. x 48 in.; Test Duration - 15 min.)



The AMCA Water Penetration Test provides a method for comparing various louver models and designs as to their efficiency in resisting the penetration of rainfall under specific laboratory test conditions. The point of zero water penetration is defined as that velocity where the water penetration curve projects through .01 oz. of water (penetration) per sq. ft. of louver free area. **\*The beginning point of water penetration for Louver Type K6744X is 989 fpm free area velocity.** These performance ratings do not guarantee a louver to be weatherproof or stormproof and should be used in combination with other factors including good engineering judgement in selecting louvers.

# LOUVER TYPE K6744X

## METHOD OF INSTALLATION & ACCESSORY OPTIONS



### FINISHES

Finish Type	Description/Application	Color Selection	Standard Warranty (Aluminum)
<b>AAMA 2605</b> 100% Fluoropolymer (FEVE) 2-Coat 70% Kynar® (PVDF) 3-Coat 70% Kynar® (PVDF) 4-Coat 70% Kynar® (PVDF)	"Best." The premier finish for extruded aluminum. Tough, long-lasting coating has superior color retention and abrasive properties. Resists chalking, fading, chemical abrasion and weathering.	<b>Standard Colors:</b> Any of the 27 standard colors shown can be furnished in 70% or 50% Kynar®, 100% Fluoropolymer or Baked Enamel. <b>Mica Colors:</b> Airlite offers 6 standard Mica colors for 70% Kynar® or 100% Fluoropolymer. <b>Custom Colors:</b> Custom color matching is available. Consult your Airlite representative for cost and/or lead-time implications if a custom color is required.	10 Years (20 Years Optional)
<b>AAMA 2603</b> Baked Enamel	"Good." Provides good adhesion and resistance to weathering, corrosion and chemical stain.		1 Year
<b>AA-M10C22A42</b> Integral Color Anodize	"Two-step" anodizing is produced by following the normal anodizing step with a second, colorfast process.	Light, Medium, Dark or Extra Dark Bronze; Champagne; Black	5 years
<b>AA-M10C22A41</b> Clear Anodize 215 R-1	Clear, colorless and hard oxide aluminum coating that resists weathering and chemical attack.	Clear	5 years
<b>AA-M10C22A31</b> Clear Anodize 204	Clear, colorless and hard oxide aluminum coating that resists weathering and chemical attack.	Clear	1 Year
<b>Prime Coat</b>	Louvers or architectural products shall be cleaned, pre-treated and receive a prime coat finish suitable for field painting. Airlite does not recommend prime coat or field painting of materials.		n/a
<b>Mill</b>	Materials may be supplied in natural aluminum or galvanized steel finish when normal weathering is acceptable and there is no concern for color or color change.		n/a

Finishes meet or exceed AAMA 2605, AAMA 2604, and AAMA 2603 requirements. Please consult [www.airlite.com](http://www.airlite.com) for complete information on standard and extended paint warranties. Paint finish warranties are not applicable to steel products.



P.O. Box 410, 525 Western Road, Schofield, WI 54476-0410 USA  
715.841.8757 • fax 715.841.8773 • [www.airlite.com](http://www.airlite.com)

Submittal K6744X June 2020  
Copyright ©2020 The Airlite Company, LLC

The Airlite Company, LLC reserves the right to make product changes.