

## CSBM Series



## Centrifugal Cabinet Fan



GTG Industries Sdn Bhd certifies that the model: CSBM shown herein is licensed to bear the AMCA Seal.

The ratings shown are based on tests and procedures performed in accordance with AMCA Publication 211 and AMCA Publication 311 and comply with the requirements of the AMCA Certified Ratings Program.



# Centrifugal Cabinet Fan For General Ventilation

## Introduction

CSBM is a belt Drive Centrifugal cabinet fan specially designed for commercial / industrial building ventilation , it provides large air volume at high static pressure with low operating noise.

## Range

CSBM500  
CSBM560  
CSBM710

## Features

- It generates large air volume at high static with low operating noise
- Belt driven function provides widest selection to suit all types of ventilation requirement

## Specification

### Impeller

- Type : 1) Backward curve, DIDW
- Material : Steel with anti corrosion paint

### Motor

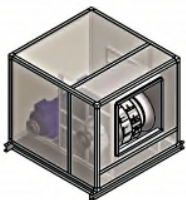
- TEFC induction motor
- IP : 55

### Casing

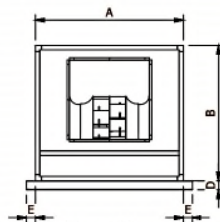
- Frame : Aluminium
- Panel : GI sheet

## Dimension

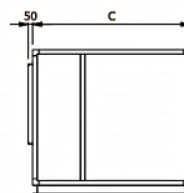
Model	A	B	C	D	E
			Horizontal		
CSBM500	1198	1150	1390	50	100
CSBM560	1335	1260	1530	75	100
CSBM710	1668	1530	1780	75	100



Horizontal Discharge



Front View

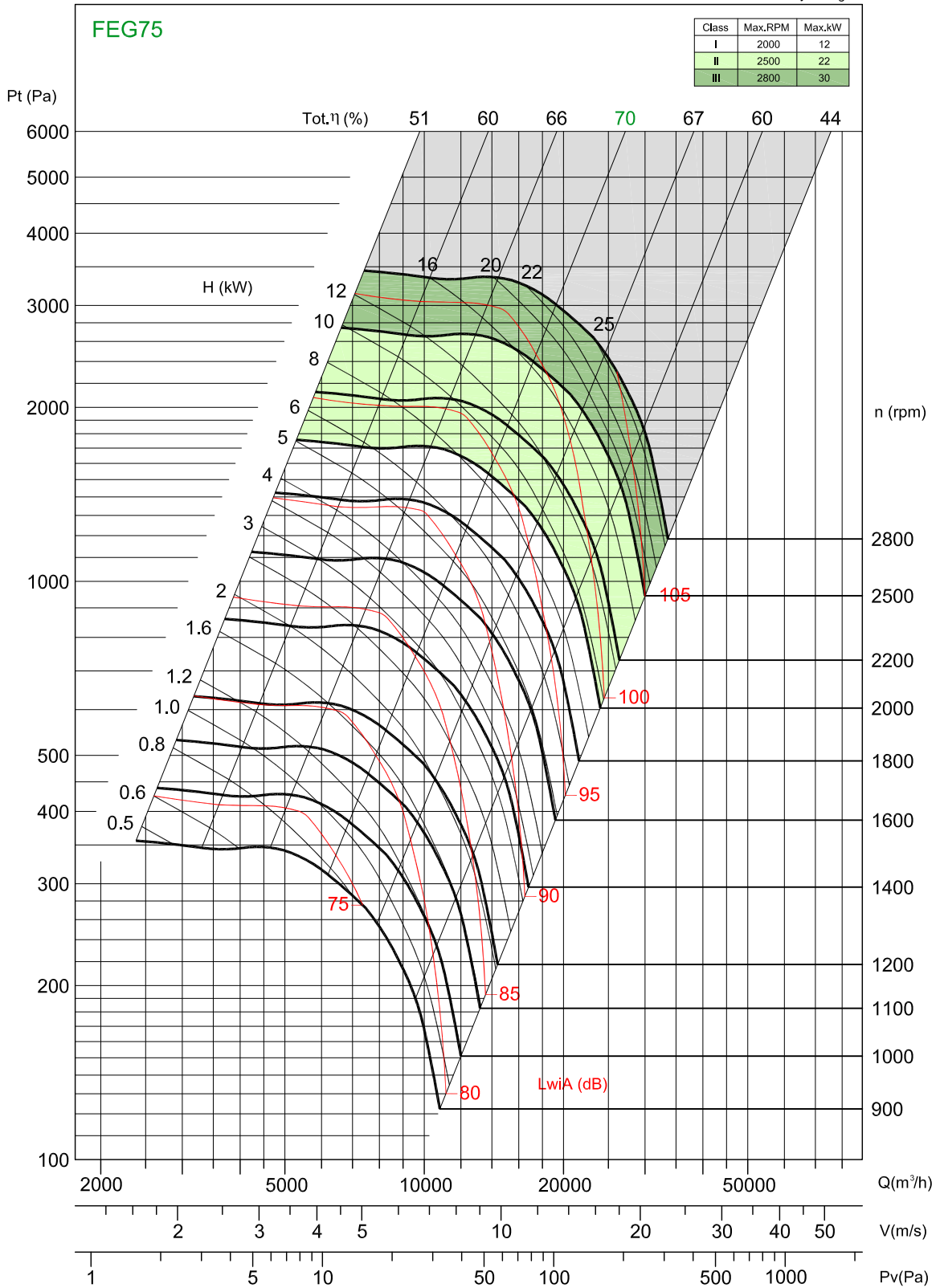


Side View

Note: 1) All dimensions are subject to change without prior notice

## CSBM 500

Gas Density: 1.2kg/m<sup>3</sup>

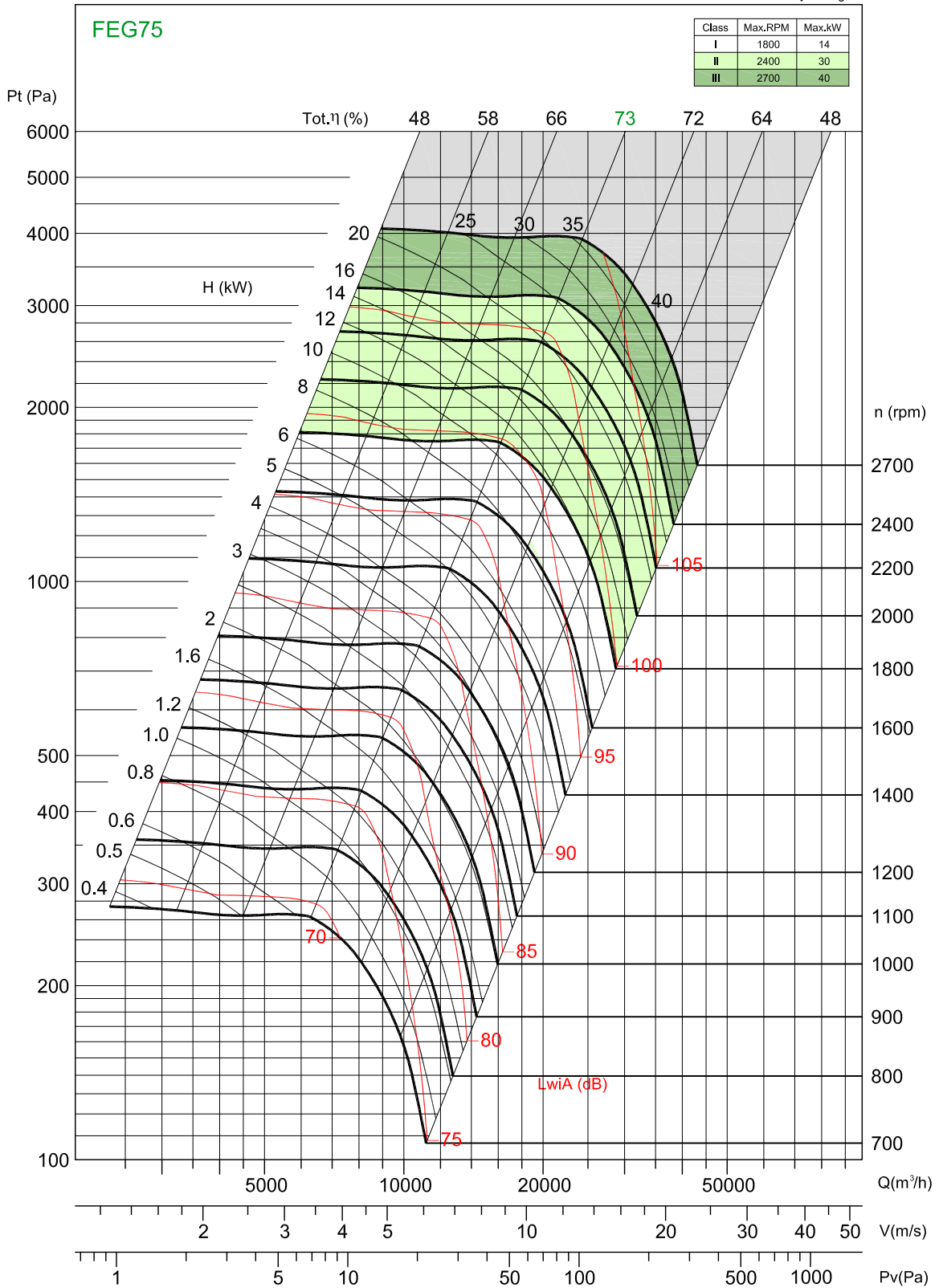


Performance certified is for installation type B - Free inlet, Ducted outlet. Power rating (kW) does not include transmission losses. Performance ratings do not include the effects of appurtenances (accessories). The A-weighted sound ratings shown have been calculated per AMCA International Standard 301. Values shown are for inlet LwiA sound power levels for installation Type B: free inlet, ducted outlet.



## CSBM 560

Gas Density: 1.2kg/m<sup>3</sup>

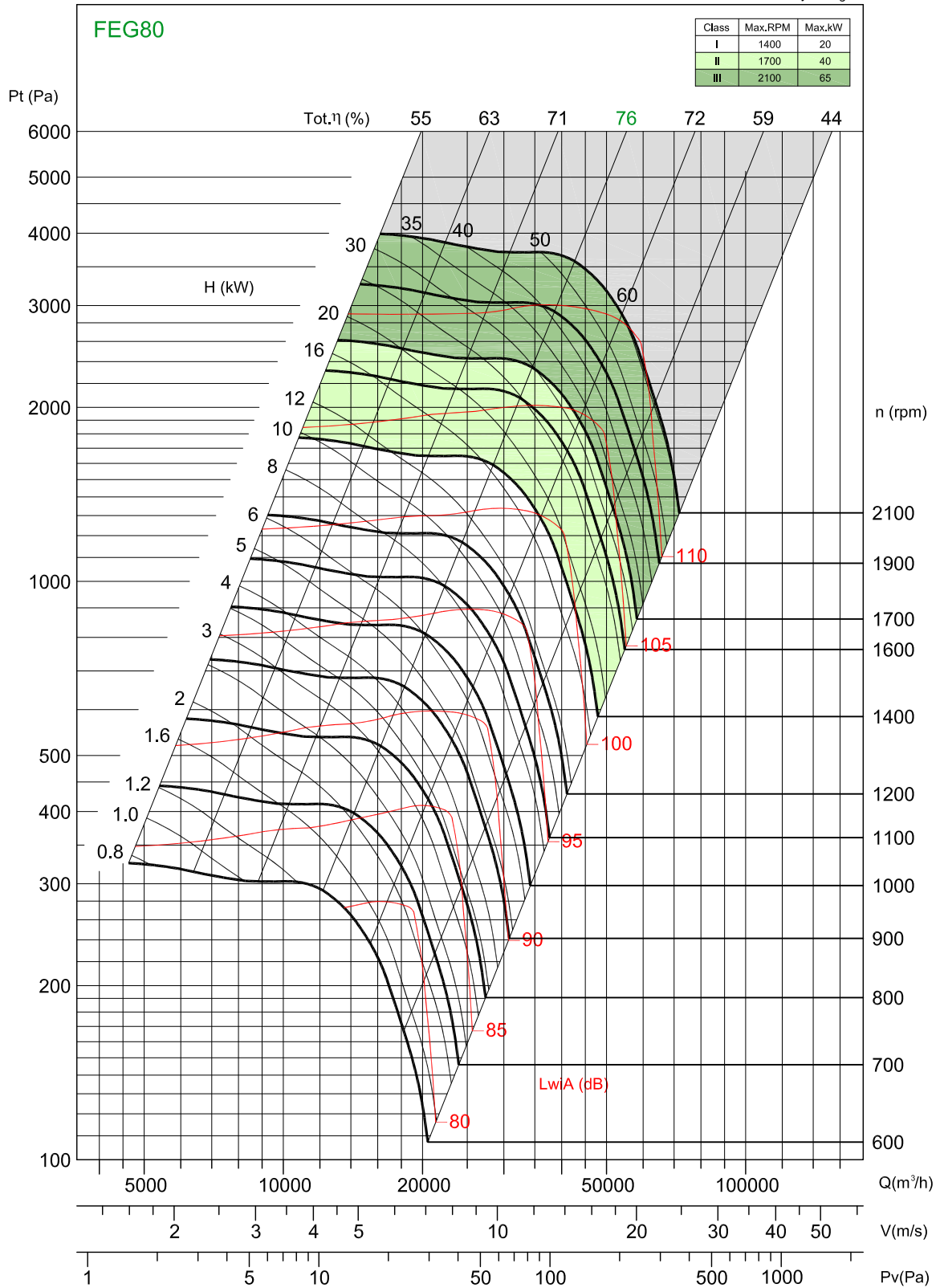


Performance certified is for installation type B - Free inlet, Ducted outlet. Power rating (kW) does not include transmission losses. Performance ratings do not include the effects of appurtenances (accessories). The A-weighted sound ratings shown have been calculated per AMCA International Standard 301. Values shown are for inlet LwA sound power levels for installation Type B: free inlet, ducted outlet.



## CSBM 710

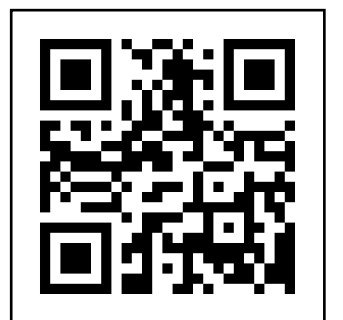
Gas Density: 1.2kg/m<sup>3</sup>



Performance certified is for installation type B - Free inlet, Ducted outlet. Power rating (kW) does not include transmission losses. Performance ratings do not include the effects of appurtenances (accessories). The A-weighted sound ratings shown have been calculated per AMCA International Standard 301. Values shown are for inlet LwA sound power levels for installation Type B: free inlet, ducted outlet.



**GTG<sup>®</sup>**



SCAN & VISIT OUR WEBSITE

**GTG Industries Sdn Bhd**

(912584-W)

**No. 13, Jalan Astaka U8/88B**

**Section U8, Bukit Jelutong**

**40150 Shah Alam, Selangor.**

**TEL +603-7859 0213/0216/0217 FAX +03-7859 0218**

**EMAIL [inquiry@gtg.com.my](mailto:inquiry@gtg.com.my) WEBSITE [www.gtg.com.my](http://www.gtg.com.my)**

