

GENERAL

Ventline louvers is designed to provide weather resistance and excellent air volume qualities with high resistance in water penetration. VTL-437 is suitable for special application and supplied with concealed mullions for continuous blade or modular assemblies. Vertically installed into the wall opening of the building.

CONSTRUCTION

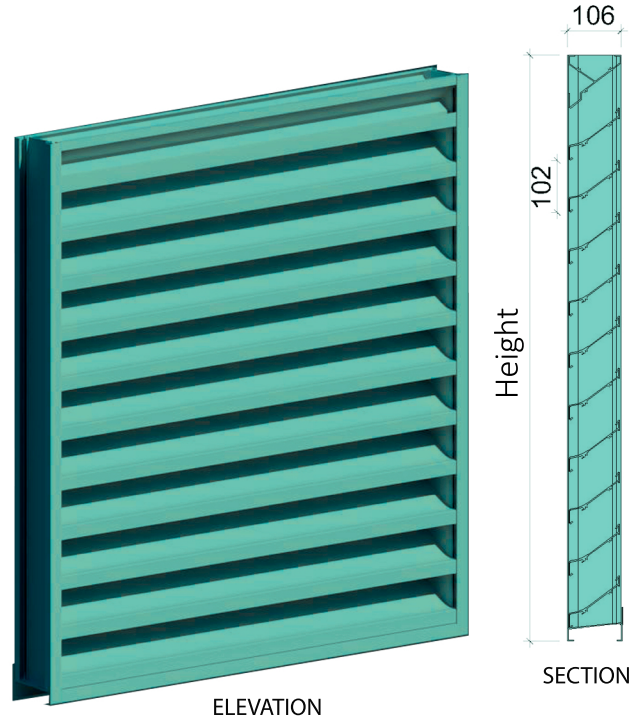
Manufactured from aluminium extrusion Alloy 6063 T6 mechanically jointed.

- Frame 2.0mm (T) Al. Extrusion
- Blade 2.0mm (T) Al. Extrusion
- Blade Angle 37° Degrees
- Blade Spacing. 102mm
- Depth 103mm (4")
- Free Area (%) 59%
- Min. Size 300x300 (mm)
- Max. Size 2400x2400(mm)
- Louver Clearance 1/4 inch
- Larger Sizes in multiple section

Finish Mill Finish, Powder coated, Epoxy coated, PVDF and Natural Anodizing. Special coating is available upon request.

OPTIONAL FEATURE

- Blank Panels. Double wall or Single skin
- Mullion more than 1.8m width
- Support screen with Birdmesh or Insect mesh from Aluminium, Galvanized or Stainless steel.
- Filter Rack Washable type
- Openable Louver Hinged/Pinned
- Welded Assembly Frames and blade with fillet welds concealed from view. Each weld has 25.4mm (1-inch) min. in length with 3.175mm (1/8 – inch) leg.
- Irregular shapes. Triangular, Trapezoidal & etc..
- Sleeved flange for Ductwok system.





SUGGESTED SPECIFICATION

Manufacture and install as specified hereinafter where shown on plans or as described in schedules. Louvers shall be stationary type entirely contained a 4" (103) frame. Louver components (heads, jambs, cills, blades and mullions) shall be factory assembled by Ventline. Louver sizes too large for shipping shall be made in modules for easy handling.

Louvers shall be Ventline Model VTL-437 constructions as follows:

- Head Frame: Drainable Head
- Frame: 2mm (T) Extruded Aluminium – Alloy 6063T5/T6
- Blades: 37° Degrees 2mm (T) Extruded Aluminium – Alloy 6063T5/T6
- Screen: 1.0mm (T) Aluminium flattened expanded mesh.
- Finish: To be selected from Standard RAL colour charts (Other colour is available upon request)

DATE		DESIGNER		ENGINEER	
PROJECT					
ITEM	QTY	W	H	 <p>Ventline certifies that the model VTL-437 shown herein is licensed to bear the AMCA Seal. The ratings shown are based on tests and procedures performed in accordance with AMCA Publication 511 and comply with the requirements of the AMCA Certified Ratings Programs applies to water penetration and air performance ratings only.</p>	



Ventilation and Acoustic Solutions
 P.O. Box : 77261 , Dubai, UAE
 Tel.: +971 4 341 9538, Fax: +971 4 3419548
 Email: info@ventline.ae
 Website: www.ventlineinternational.com

Head Office
 6444 Santa Fe Drive, TX, USA, 75056, 3276
 Tel.: +1 469 767 6579
 Fax: +1 972 668 2553

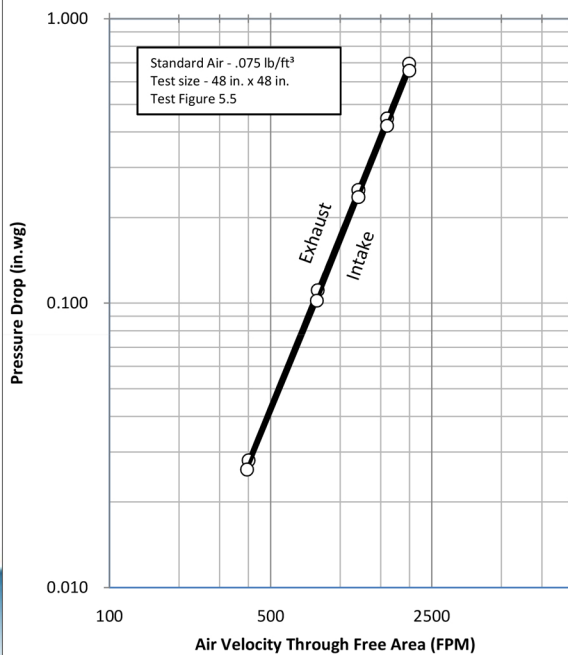
FREE AREA CALCULATIONS in SQ. FT.

		WIDTH - FT ²																			
INCHES	MM	12	18	24	30	36	42	48	54	60	66	72	78	84	90	96	102	108	114	120	
		305	457	610	762	914	1067	1219	1372	1524	1676	1828	1981	2134	2286	2438	2591	2743	2895	3048	
HEIGHT - FT ²	24	610	1.05	1.57	2.10	2.62	3.14	3.67	4.19	4.72	5.24	5.76	6.28	6.81	7.34	7.86	8.38	8.91	9.43	9.95	10.48
	30	762	1.42	2.12	2.83	3.54	4.24	4.95	5.66	6.37	7.07	7.78	8.49	9.20	9.91	10.61	11.32	12.03	12.73	13.44	14.15
	36	914	1.69	2.54	3.39	4.23	5.08	5.93	6.77	7.62	8.47	9.31	10.16	11.01	11.86	12.70	13.55	14.40	15.24	16.08	16.93
	42	1067	2.06	3.09	4.13	5.16	6.19	7.22	8.25	9.29	10.32	11.34	12.37	13.41	14.45	15.47	16.50	17.54	18.57	19.60	20.63
	48	1219	2.34	3.51	4.68	5.85	7.02	8.19	9.36	10.53	11.70	12.87	14.03	15.21	16.38	17.55	18.71	19.89	21.06	22.22	23.40
	54	1372	2.71	4.07	5.43	6.78	8.13	9.49	10.84	12.21	13.56	14.91	16.26	17.62	18.98	20.34	21.69	23.05	24.40	25.75	27.12
	60	1524	2.99	4.48	5.98	7.47	8.96	10.46	11.95	13.45	14.94	16.43	17.92	19.42	20.92	22.41	23.90	25.40	26.89	28.38	29.88
	66	1676	3.36	5.03	6.71	8.39	10.06	11.74	13.42	15.10	16.78	18.45	20.12	21.81	23.49	25.16	26.84	28.52	30.19	31.87	33.55
	72	1828	3.64	5.45	7.27	9.08	10.90	12.72	14.53	16.36	18.17	19.98	21.79	23.62	25.44	27.25	29.07	30.89	32.70	34.51	36.34
	78	1981	4.01	6.00	8.01	10.01	12.01	14.02	16.02	18.03	20.02	22.02	24.02	26.03	28.04	30.03	32.03	34.04	36.04	38.04	40.05
	84	2134	4.29	6.43	8.58	10.71	12.85	15.00	17.14	19.29	21.43	23.56	25.70	27.85	30.00	32.14	34.28	36.43	38.57	40.70	42.85
	90	2286	4.66	6.98	9.31	11.63	13.95	16.29	18.61	20.94	23.26	25.58	27.90	30.24	32.57	34.89	37.21	39.55	41.87	44.19	46.53
96	2348	4.93	7.39	9.87	12.33	14.79	17.26	19.72	22.20	24.66	27.12	29.58	32.05	34.53	36.99	39.45	41.92	44.38	46.84	49.32	
102	2591	5.30	7.95	10.61	13.25	15.89	18.56	21.20	23.86	26.50	29.15	31.79	34.45	37.11	39.75	42.40	45.06	47.70	50.34	53.01	
108	2743	5.58	8.36	11.16	13.94	16.72	19.52	22.30	25.10	27.88	30.66	33.44	36.24	39.04	41.82	44.60	47.40	50.18	52.96	55.76	
114	2895	5.95	8.91	11.90	14.86	17.83	20.81	23.78	26.76	29.72	32.69	35.65	38.64	41.62	44.59	47.55	50.54	53.50	56.47	59.45	
120	3048	6.23	9.34	12.46	15.57	18.67	21.80	24.90	28.03	31.13	34.24	37.34	40.47	43.59	46.70	49.80	52.93	56.03	59.14	62.26	

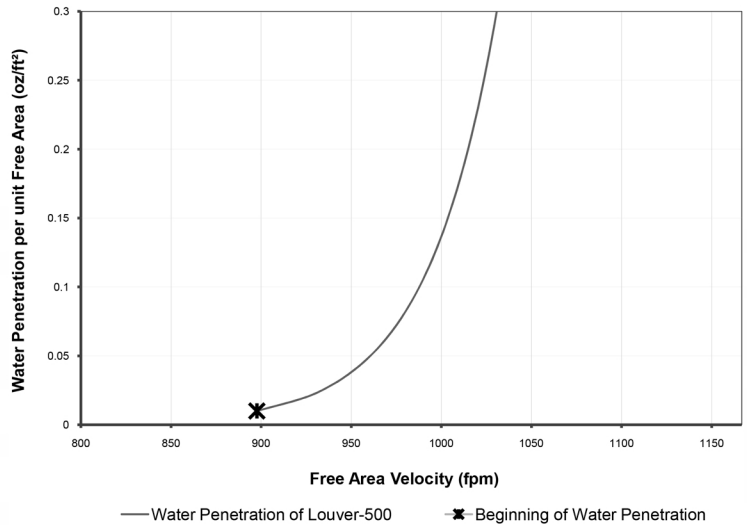
Air Performance (Standard Air .075 lb/ft³)

Test size 48 in. x 48 in.

Tested in accordance with ANSI/AMCA 500-L-12



Water Penetration of Louver-500

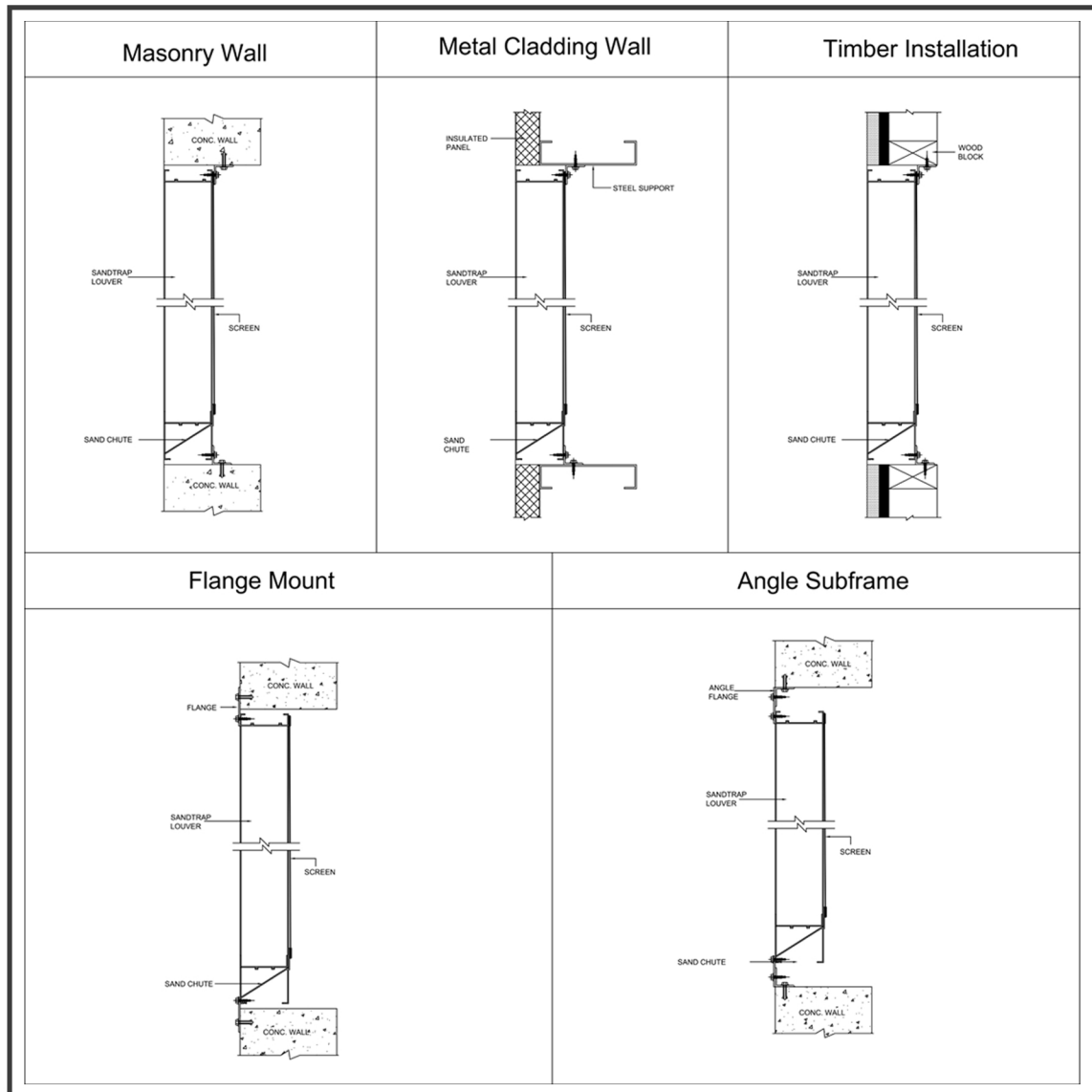


The beginning of water penetration defined as the velocity where the water penetration curves projects through .01 oz. of water (penetration) per ft² of louver free area. *The beginning of water penetration per AMCA Publication 511 based on AMCA measured free area for model VTL-437 is 900.8 fpm.



Ventline certifies that the model VTL-437 shown herein is licensed to bear the AMCA Seal. The ratings shown are based on tests and procedures performed in accordance with AMCA Publication 511 and comply with the requirements of the AMCA Certified Ratings Programs applies to water penetration and air performance ratings only.

TYPICAL INSTALLATION DETAILS



FINISHES

POWDER COATING: Louver shall be cleaned, pre-treated and FINISHED-AFTER-ASSEMBLY with an inhibitive primer and oven-cured polyester powder coatings complies with BS6496:1984 and Qualicoat requirement. Normally 70 to 90 microns

PVDF COATING: Louver shall be cleaned, pre-treated and FINISHED-AFTER-ASSEMBLY with an inhibitive primer and Kynar resin coating with minimum 1.2 mils dry-film coating thickness that complies with AAMA2605-05. "Voluntary Specification, Performance Requirements and Tests Procedures for Superior Performance Organic Coatings on Aluminium Extrusions and Panels" and Qualicoat requirements.

ANODIZE: Louver shall be FINISHED-AFTER-ASSEMBLY with class 1 clear anodized or electrolytically color anodized coating that complies with AAMA Specification 611-98, "Voluntary Specification for Anodized Architectural Aluminium". Color shall be from Gold, Silver and Black Matt or Polished.

EPOXY PAINT: Louver shall be cleaned, pre-treated and FINISH-AFTER-ASSEMBLY with an oven cured thermo-setting enamel finish in compliance with AAMA 2603, "Voluntary Specification Performance Requirements and Test Procedures for Pigmented Organic Coatings"