



TDC Series

DIRECT DRIVE VANE AXIAL FAN



Feature

For commercial and industrial application where large volume of air is required at moderate to high pressure. Volume coefficient ranged from 0.2 to 0.5 and pressure coefficient ranged from 0.3 to 0.4. Specially designed integral straightening vanes reduce turbulence and provide high efficiency and low sound level.

Construction

Double flanged casing is produced in mild steel or galvanized steel. The impeller blades are made of Aluminum Alloy.

Finish

Zinc rich primer and polyester power coating or galvanized finishing are available for all mild steel parts.

Operating Temperature

Normal Ventilation : -20°C to +55°C
 High Temperature Application : available up to 250°C/2Hrs.

Motors

Totally Enclosed Class 'F' or 'H', with a min. IP55 protection are fitted as standard. Motors 3.0kW and above are star/delta starting. Motor of other specification are available upon request.

Airflow Direction

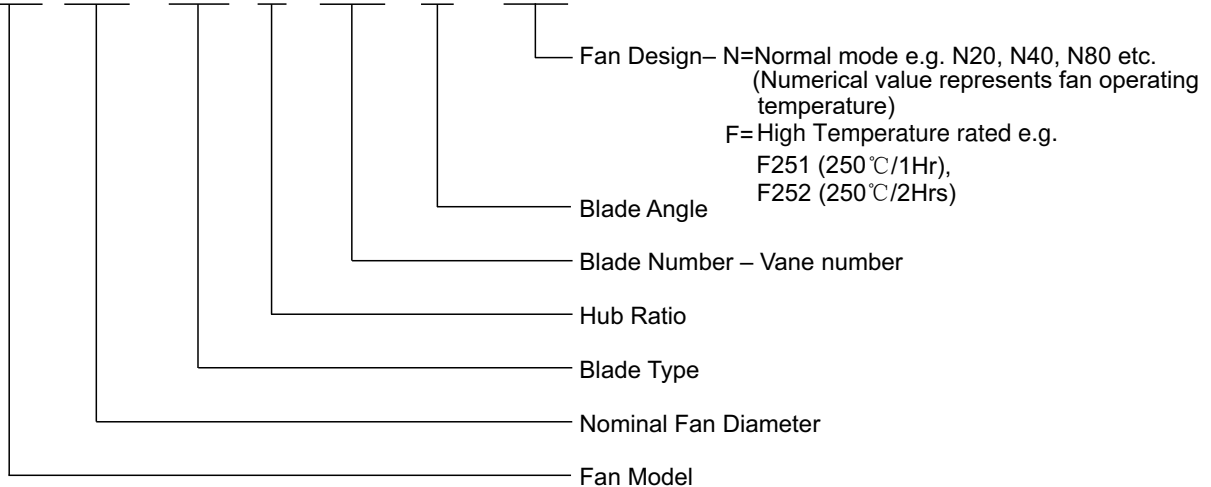
Air flow from impeller to motor is fitted as standard. Air flow from motor to impeller can be supplied upon request.



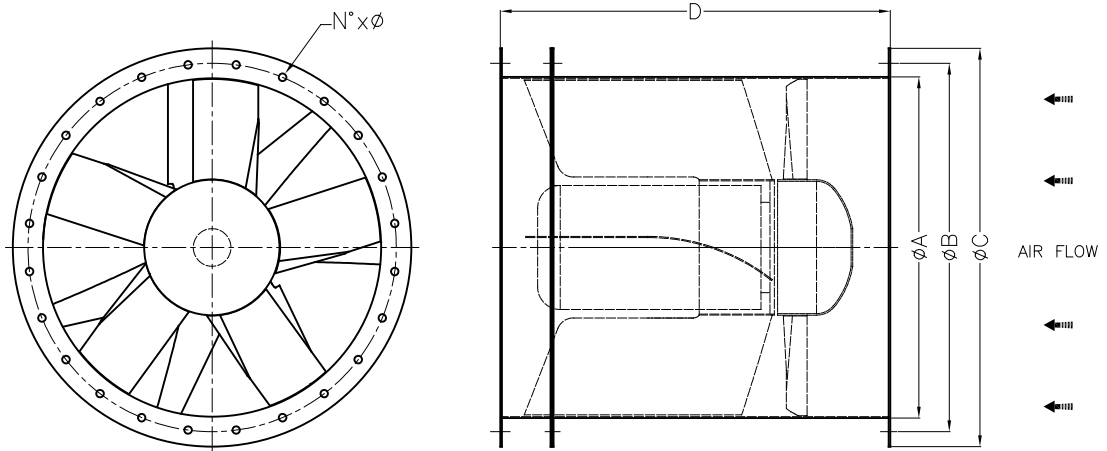
Kruger Ventilation Industries (North India) Pvt Ltd. certifies that the **TDC Series** shown herein is licensed to bear the AMCA Seal. The ratings shown are based on tests and procedures performed in accordance with AMCA Publication 211 and AMCA Publication 311 and comply with the requirements of the AMCA Certified Ratings Program.

Nomenclature

TDC 1250 / C20 / D / 4-9V / 20° / N20



Dimension



All dimension in mm.

Model	A	B	C	D	N°	Ø	Weight* (kg)	Max. Motor Frame Size**
1250	1250	1315	1380	1250	24	12	321	D225
1400	1400	1465	1530	1400	32	14	447	D250
1600	1600	1663	1730	1556	32	14	648	D280
1800	1800	1856	1930	1858	32	14	760	D315
2000	2000	2073	2130	1858	32	14	862	D315

* Weight without motor.

** Please consult KRUGER for motor frame size other than specified.

Example of Selection

Air Volume $Q = 24.07 \text{ m}^3/\text{s}$

Outlet Velocity $V_{out} = 19.61 \text{ m/s}$

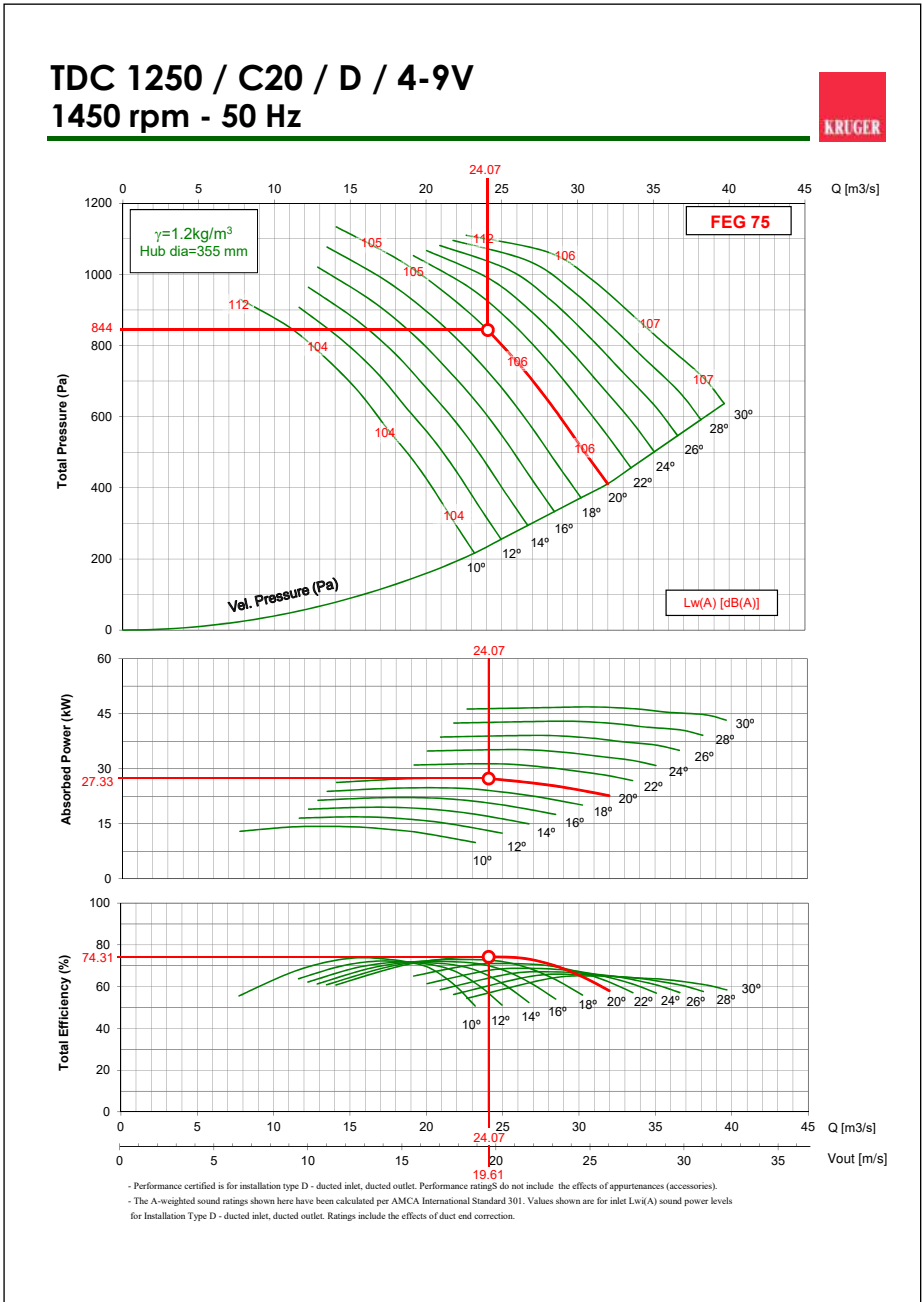
Total Pressure $P_t = 844 \text{ Pa}$

Fan Speed $N = 1450 \text{ rpm}$

Absorbed Power $H = 27.33 \text{ kW}$

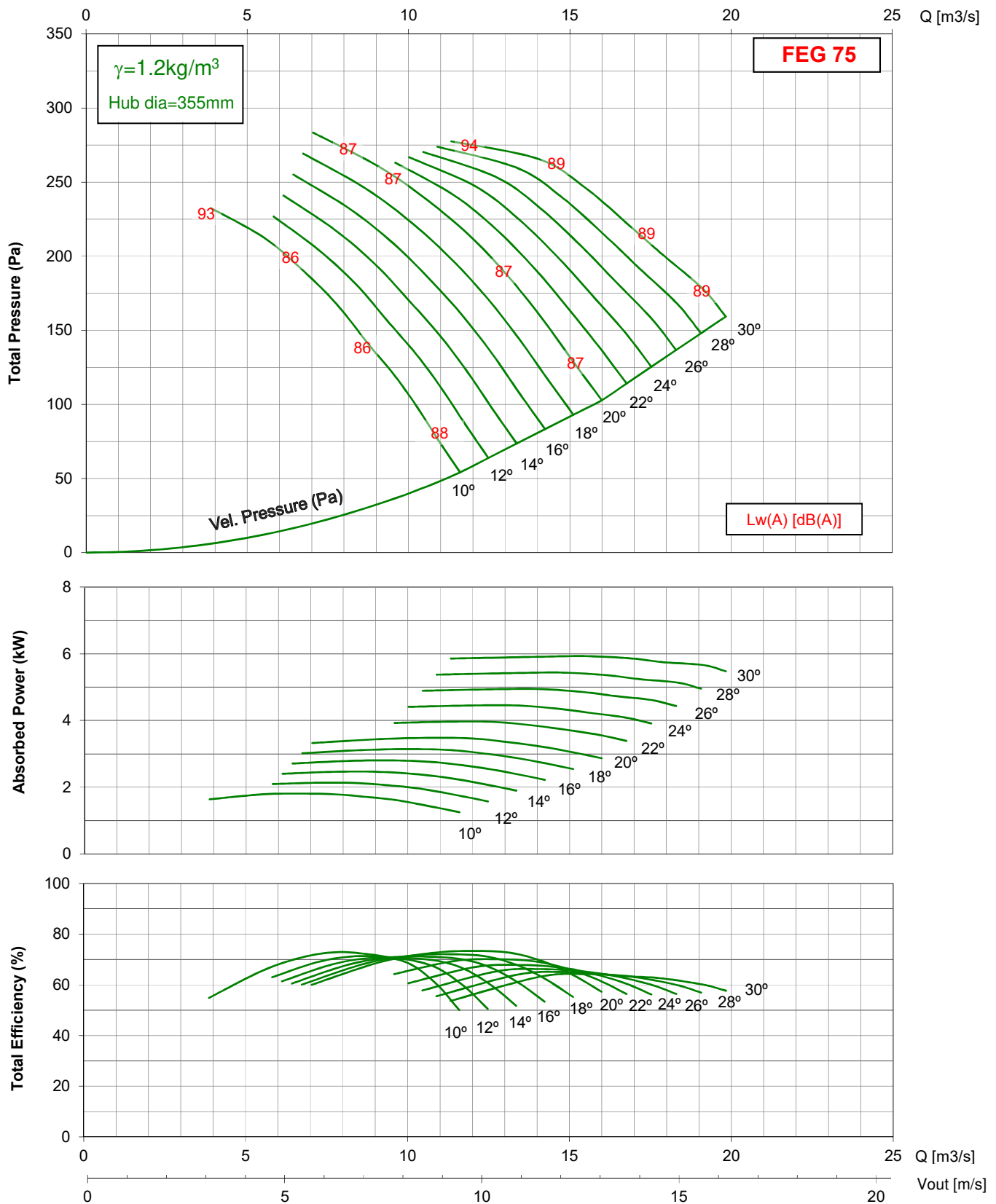
Total Efficiency $\eta = 74.31 \%$

Sound Power Level $L_w = 105 \text{ dB(A)}$



TDC 1250 / C20 / D / 4-9V

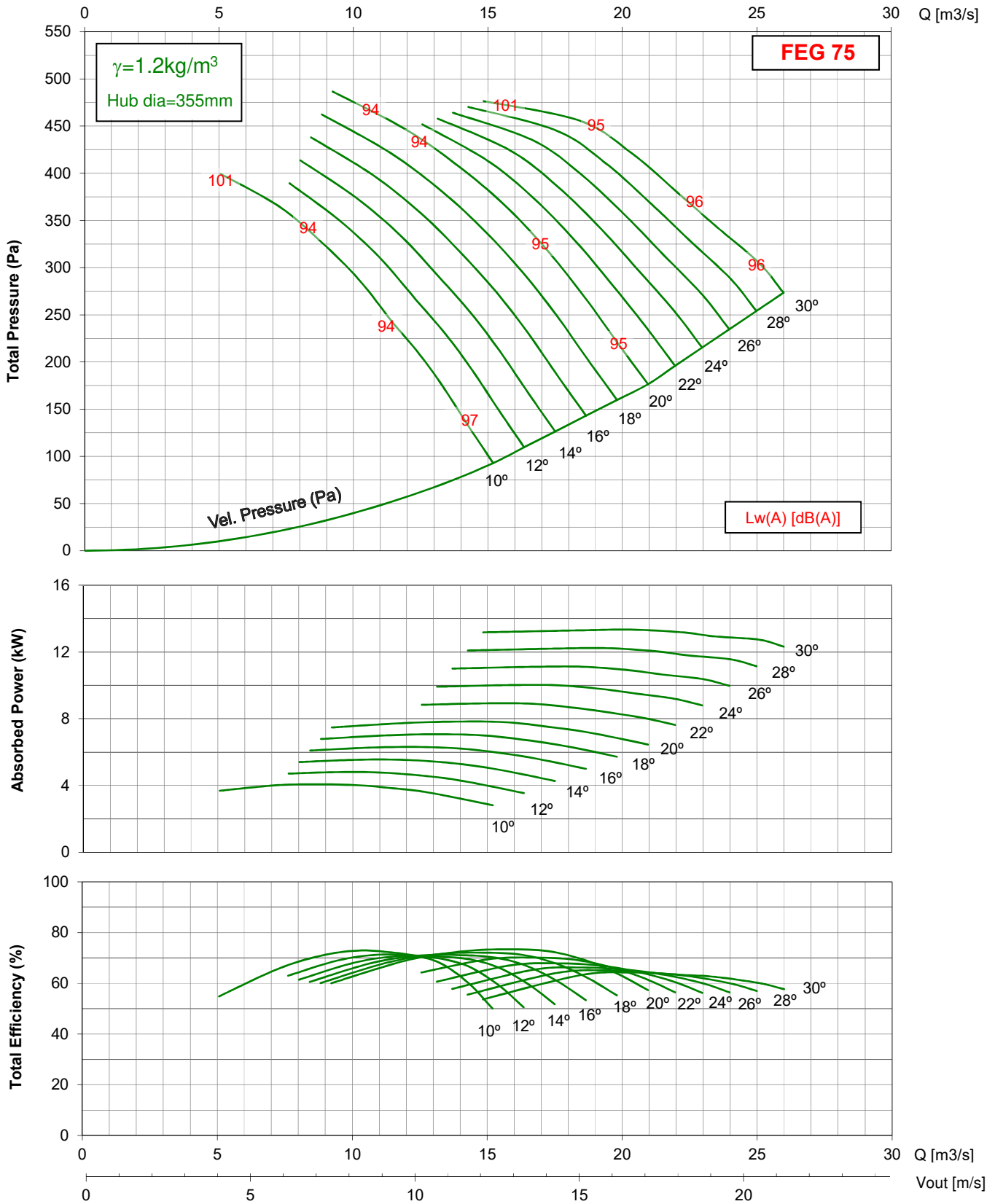
725 rpm - 50 Hz



- Performance certified is for installation type D - ducted inlet, ducted outlet. Performance ratings do not include the effects of appurtenances (accessories).
 - The A-weighted sound ratings shown here have been calculated per AMCA International Standard 301. Values shown are for inlet $L_{wi}(A)$ sound power levels for Installation Type D - ducted inlet, ducted outlet. Ratings include the effects of duct end correction.

TDC 1250 / C20 / D / 4-9V

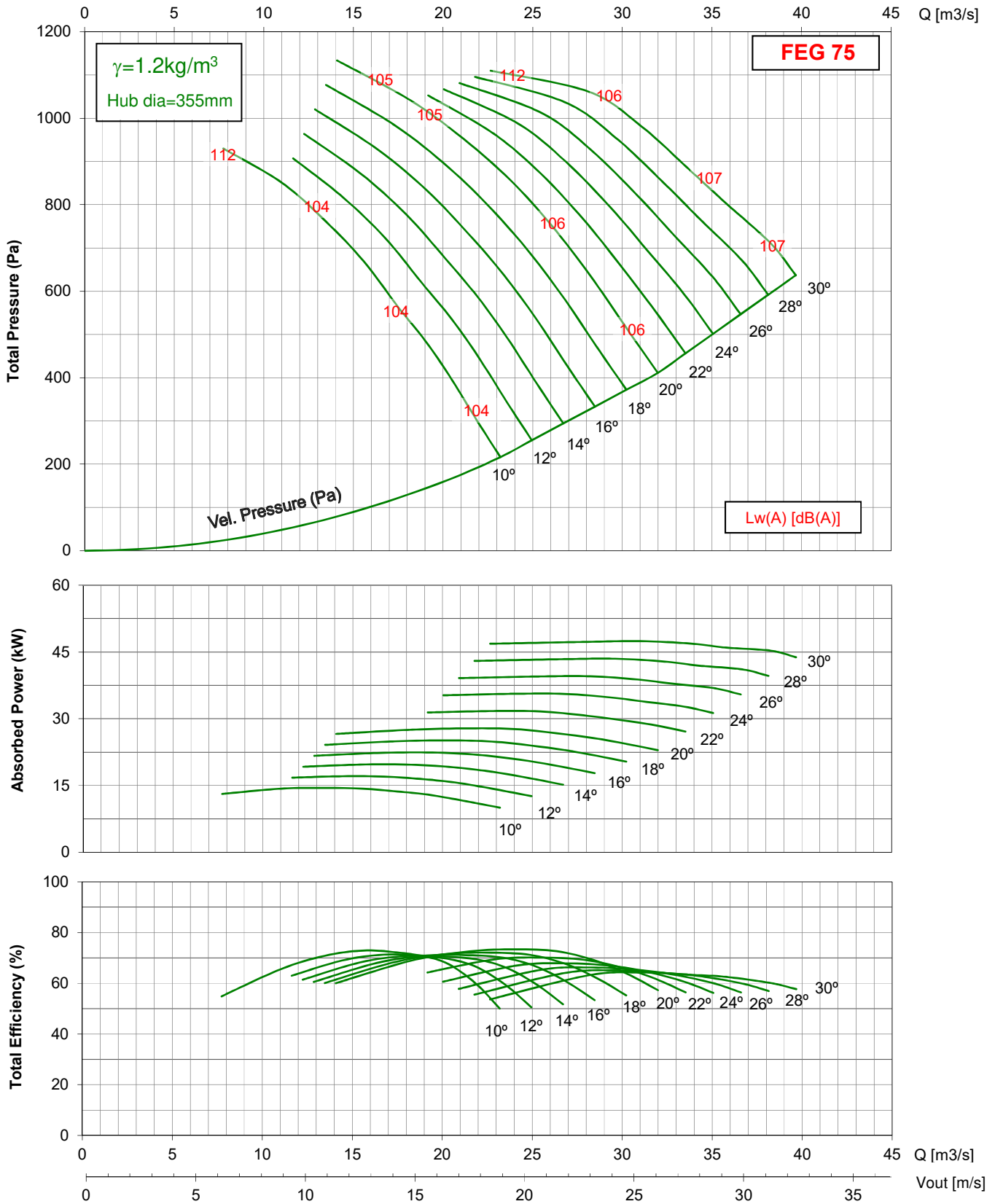
950 rpm - 50 Hz



- Performance certified is for installation type D - ducted inlet, ducted outlet. Performance ratings do not include the effects of appurtenances (accessories).
 - The A-weighted sound ratings shown here have been calculated per AMCA International Standard 301. Values shown are for inlet Lwi(A) sound power levels for Installation Type D - ducted inlet, ducted outlet. Ratings include the effects of duct end correction.

TDC 1250 / C20 / D / 4-9V

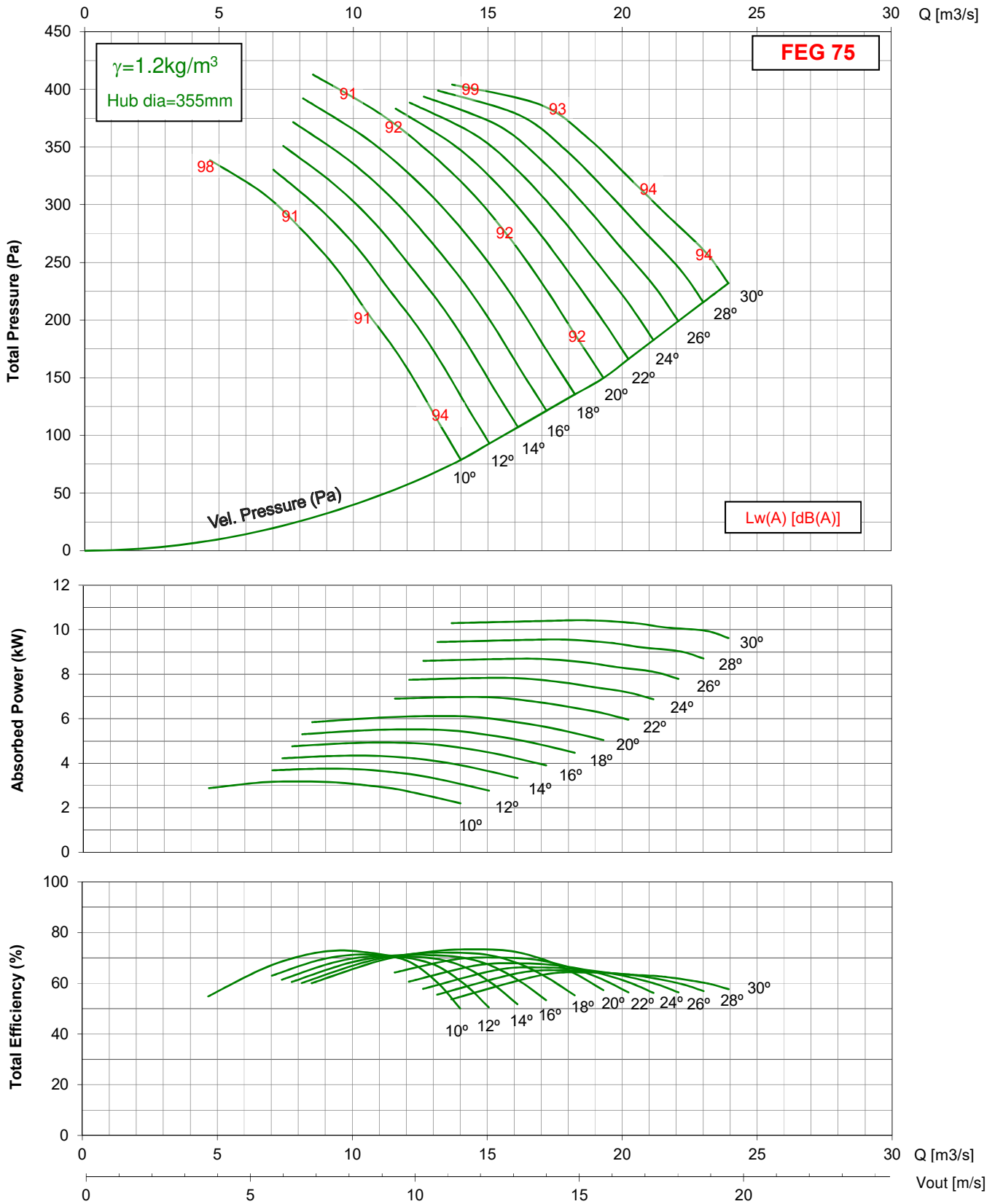
1450 rpm - 50 Hz



- Performance certified is for installation type D - ducted inlet, ducted outlet. Performance ratings do not include the effects of appurtenances (accessories).
 - The A-weighted sound ratings shown here have been calculated per AMCA International Standard 301. Values shown are for inlet Lwi(A) sound power levels for Installation Type D - ducted inlet, ducted outlet. Ratings include the effects of duct end correction.

TDC 1250 / C20 / D / 4-9V

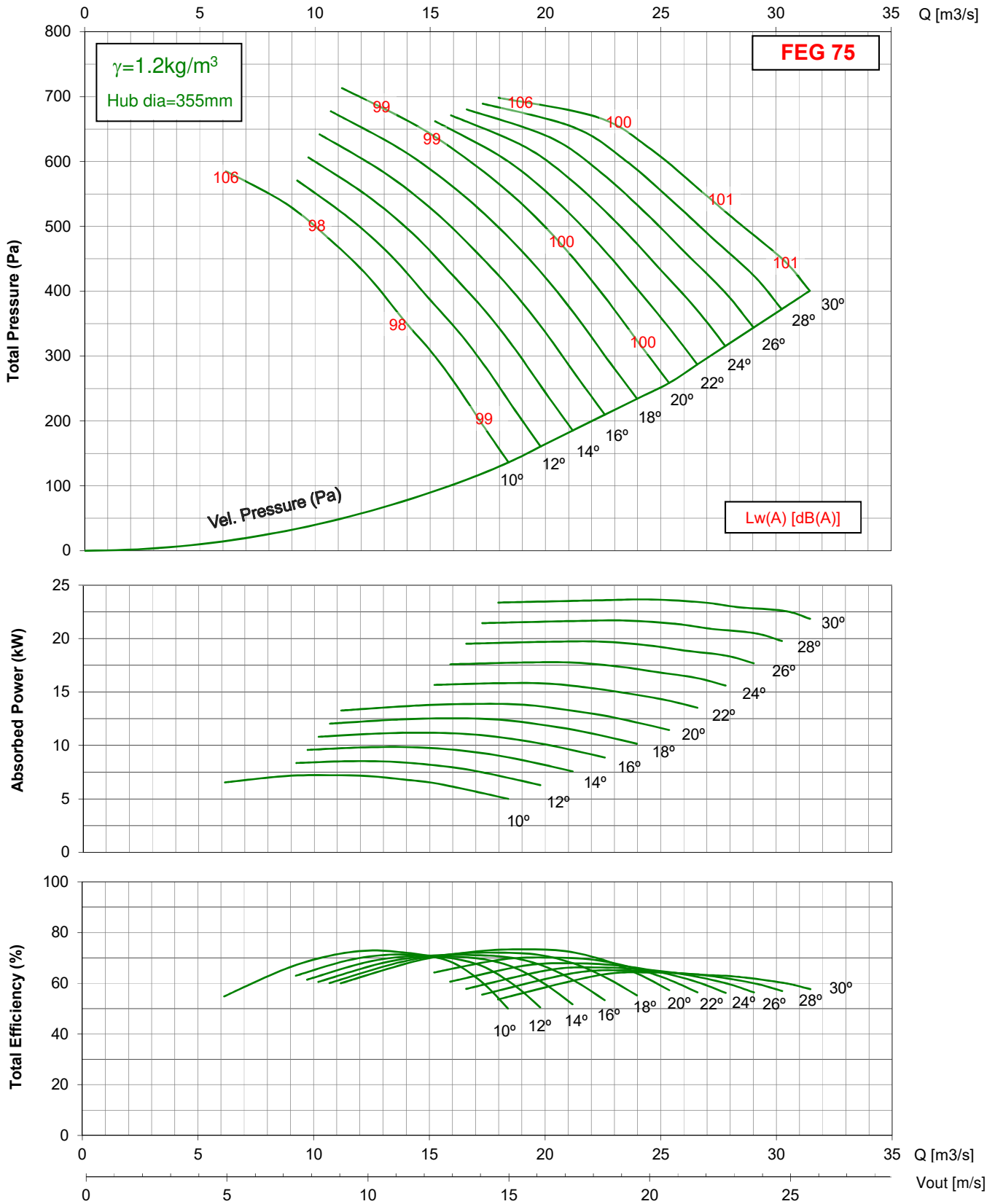
875 rpm - 60 Hz



- Performance certified is for installation type D - ducted inlet, ducted outlet. Performance ratings do not include the effects of appurtenances (accessories).
 - The A-weighted sound ratings shown here have been calculated per AMCA International Standard 301. Values shown are for inlet Lwi(A) sound power levels for Installation Type D - ducted inlet, ducted outlet. Ratings include the effects of duct end correction.

TDC 1250 / C20 / D / 4-9V

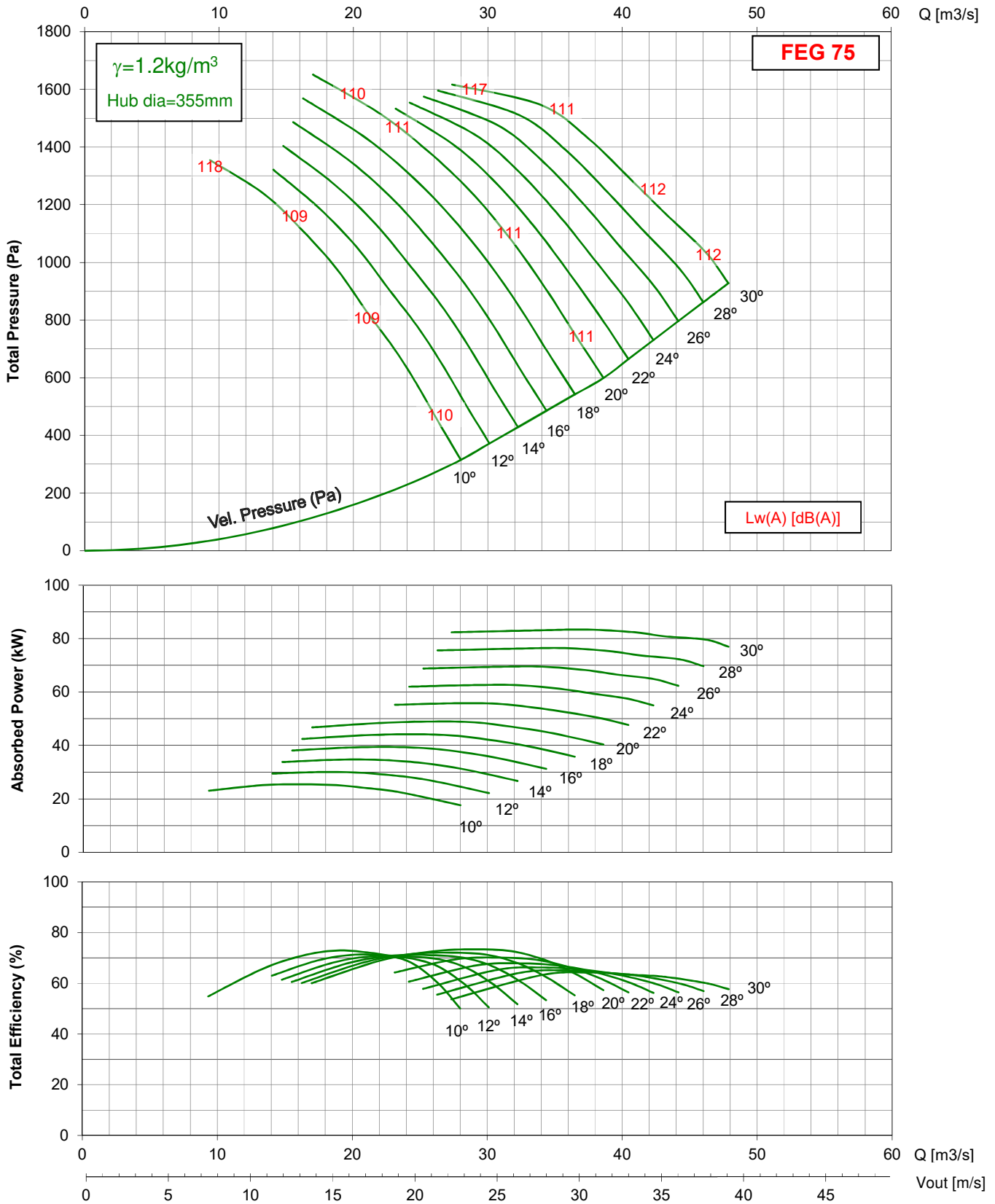
1150 rpm - 60 Hz



- Performance certified is for installation type D - ducted inlet, ducted outlet. Performance ratings do not include the effects of appurtenances (accessories).
 - The A-weighted sound ratings shown here have been calculated per AMCA International Standard 301. Values shown are for inlet Lwi(A) sound power levels for Installation Type D - ducted inlet, ducted outlet. Ratings include the effects of duct end correction.

TDC 1250 / C20 / D / 4-9V

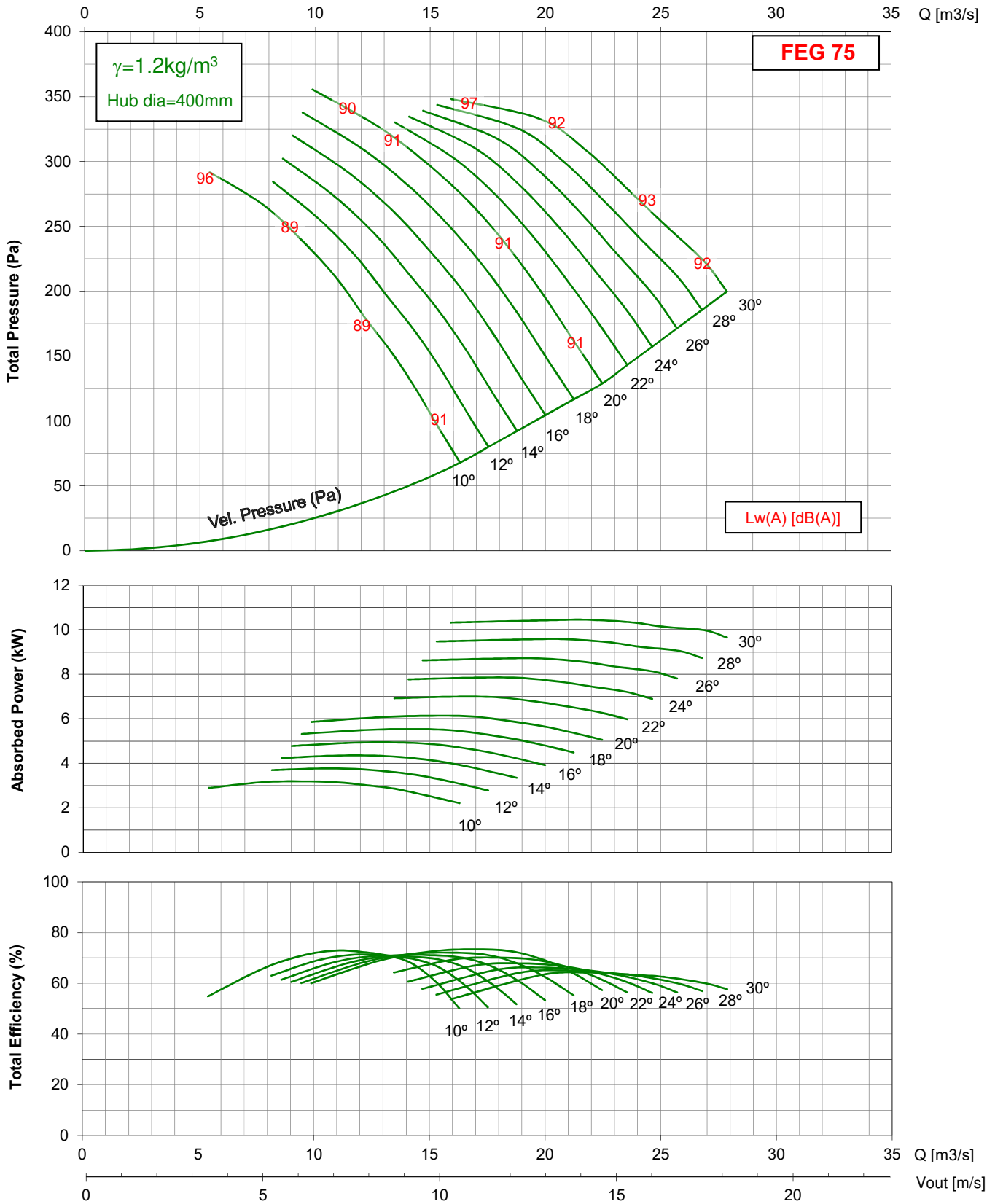
1750 rpm - 60 Hz



- Performance certified is for installation type D - ducted inlet, ducted outlet. Performance ratings do not include the effects of appurtenances (accessories).
 - The A-weighted sound ratings shown here have been calculated per AMCA International Standard 301. Values shown are for inlet Lwi(A) sound power levels for Installation Type D - ducted inlet, ducted outlet. Ratings include the effects of duct end correction.

TDC 1400 / C22 / D / 4-9V

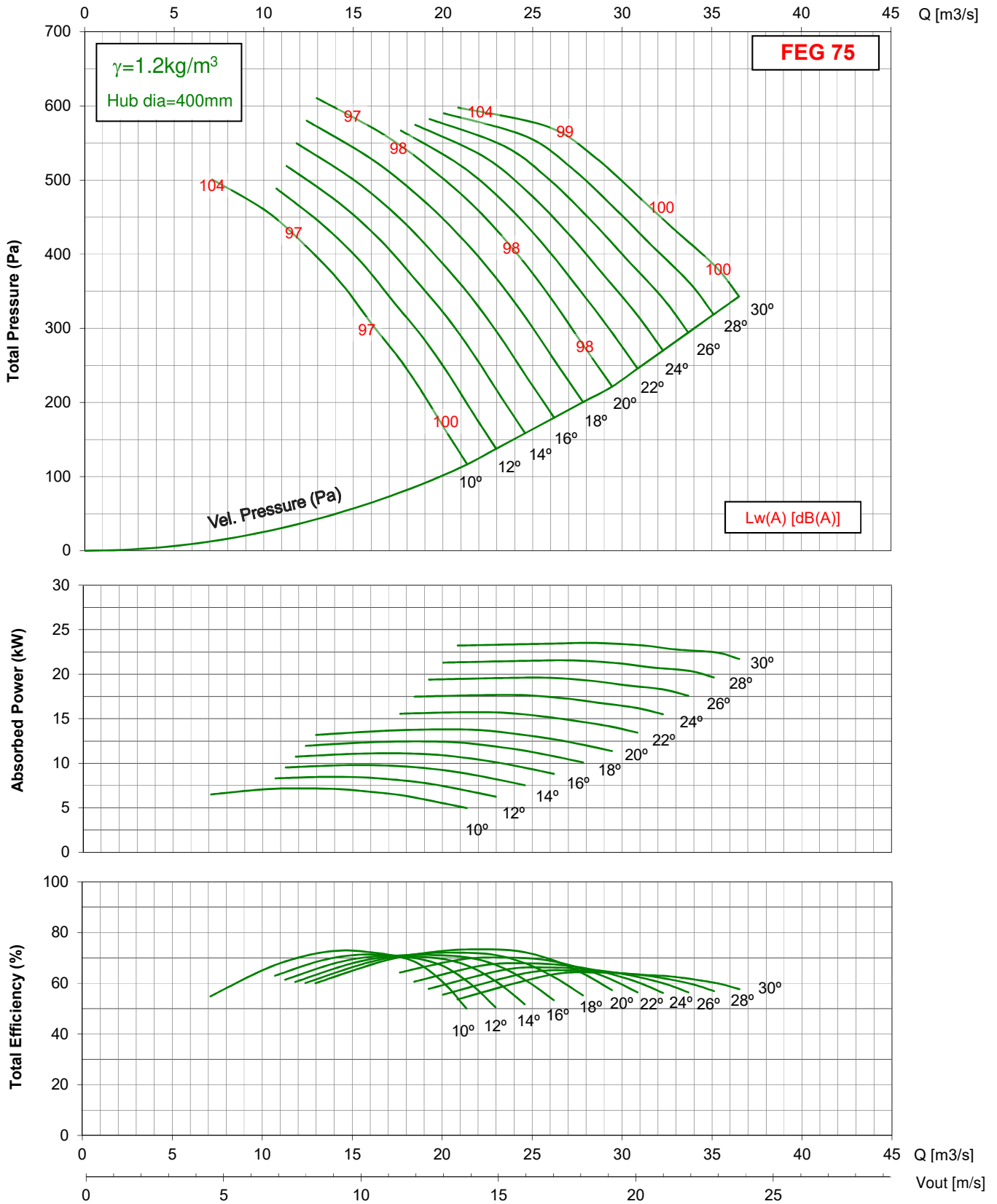
725 rpm - 50 Hz



- Performance certified is for installation type D - ducted inlet, ducted outlet. Performance ratings do not include the effects of appurtenances (accessories).
 - The A-weighted sound ratings shown here have been calculated per AMCA International Standard 301. Values shown are for inlet Lwi(A) sound power levels for Installation Type D - ducted inlet, ducted outlet. Ratings include the effects of duct end correction.

TDC 1400 / C22 / D / 4-9V

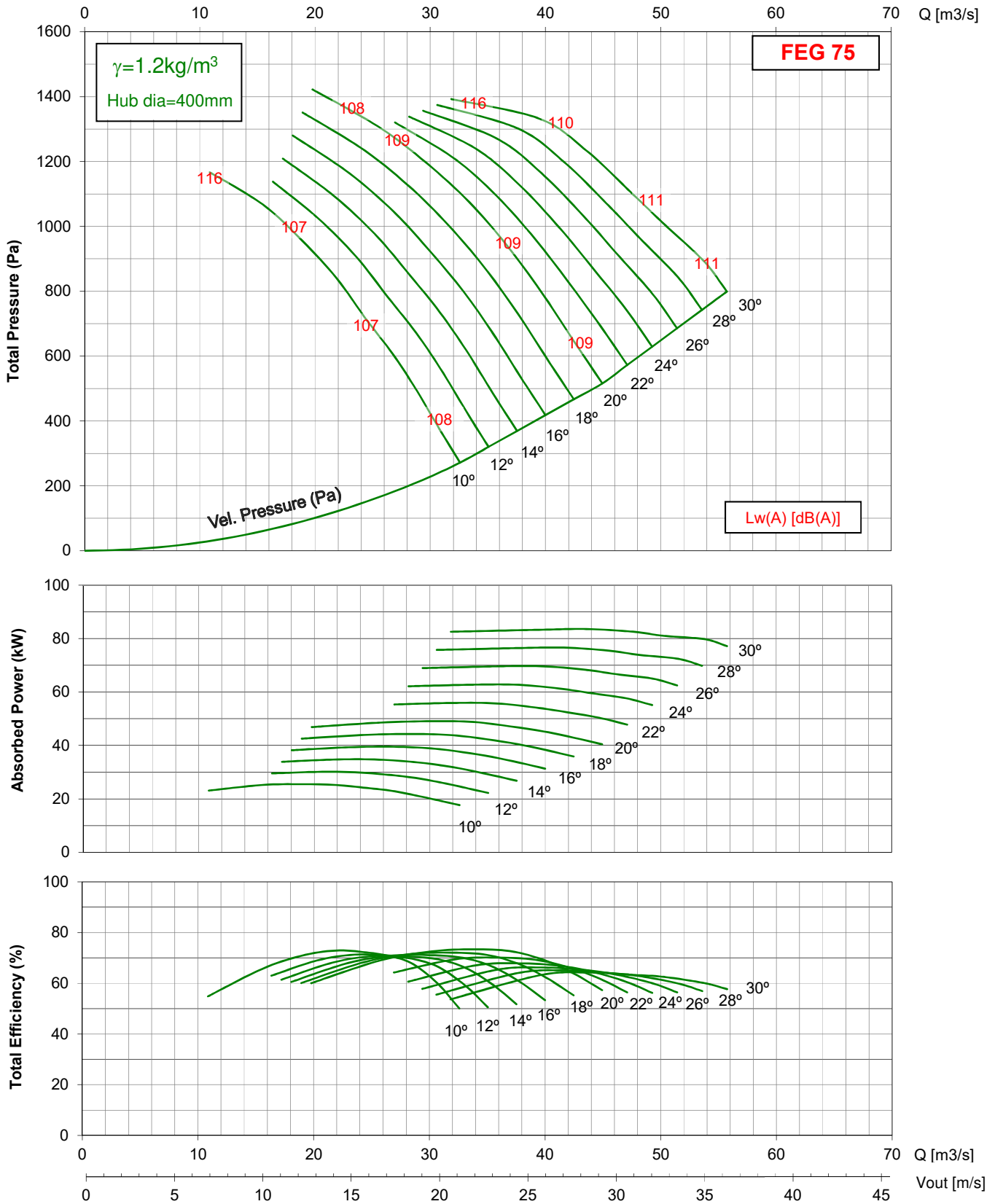
950 rpm - 50 Hz



- Performance certified is for installation type D - ducted inlet, ducted outlet. Performance ratings do not include the effects of appurtenances (accessories).
 - The A-weighted sound ratings shown here have been calculated per AMCA International Standard 301. Values shown are for inlet Lwi(A) sound power levels for Installation Type D - ducted inlet, ducted outlet. Ratings include the effects of duct end correction.

TDC 1400 / C22 / D / 4-9V

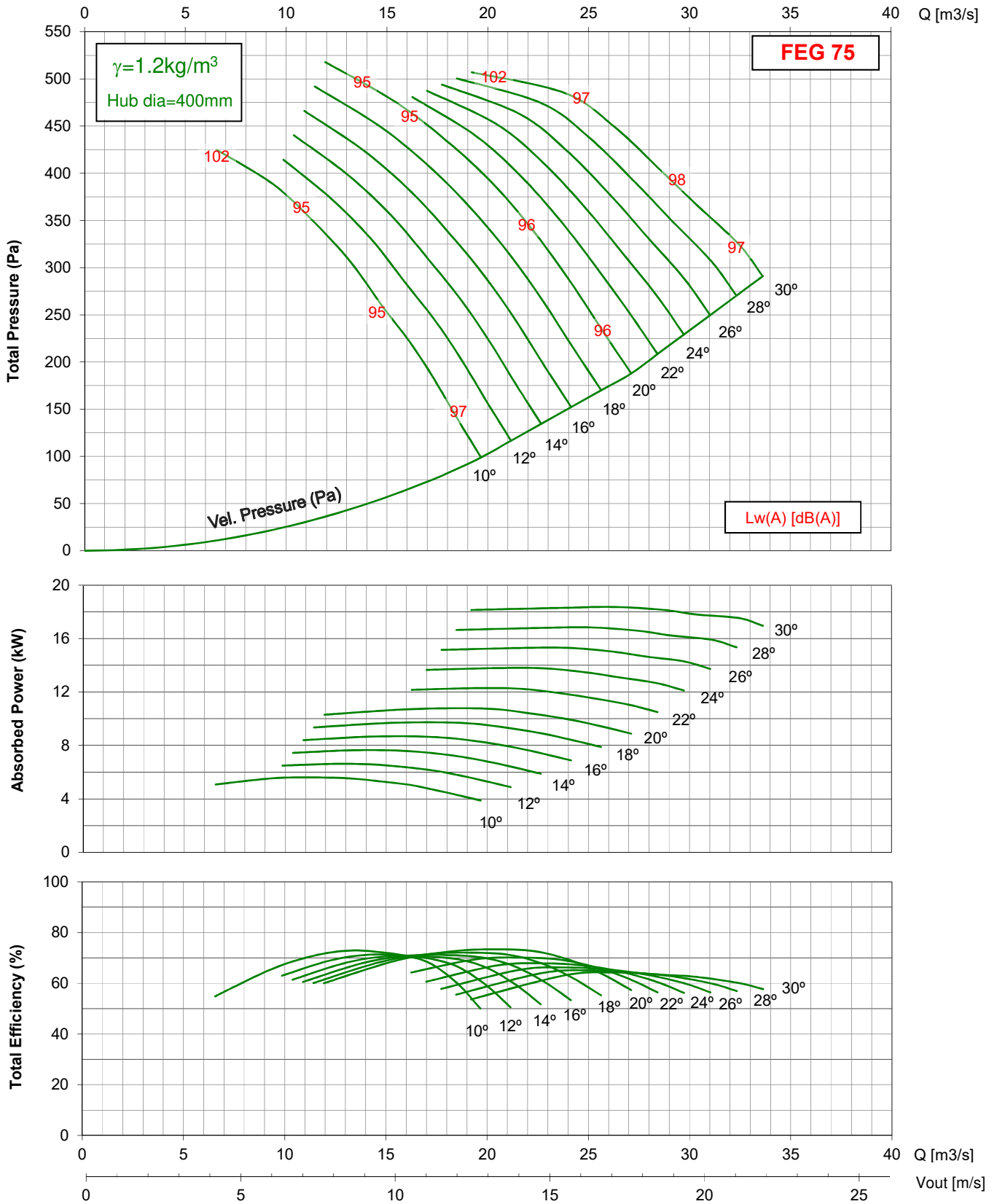
1450 rpm - 50 Hz



- Performance certified is for installation type D - ducted inlet, ducted outlet. Performance ratings do not include the effects of appurtenances (accessories).
 - The A-weighted sound ratings shown here have been calculated per AMCA International Standard 301. Values shown are for inlet Lwi(A) sound power levels for Installation Type D - ducted inlet, ducted outlet. Ratings include the effects of duct end correction.

TDC 1400 / C22 / D / 4-9V

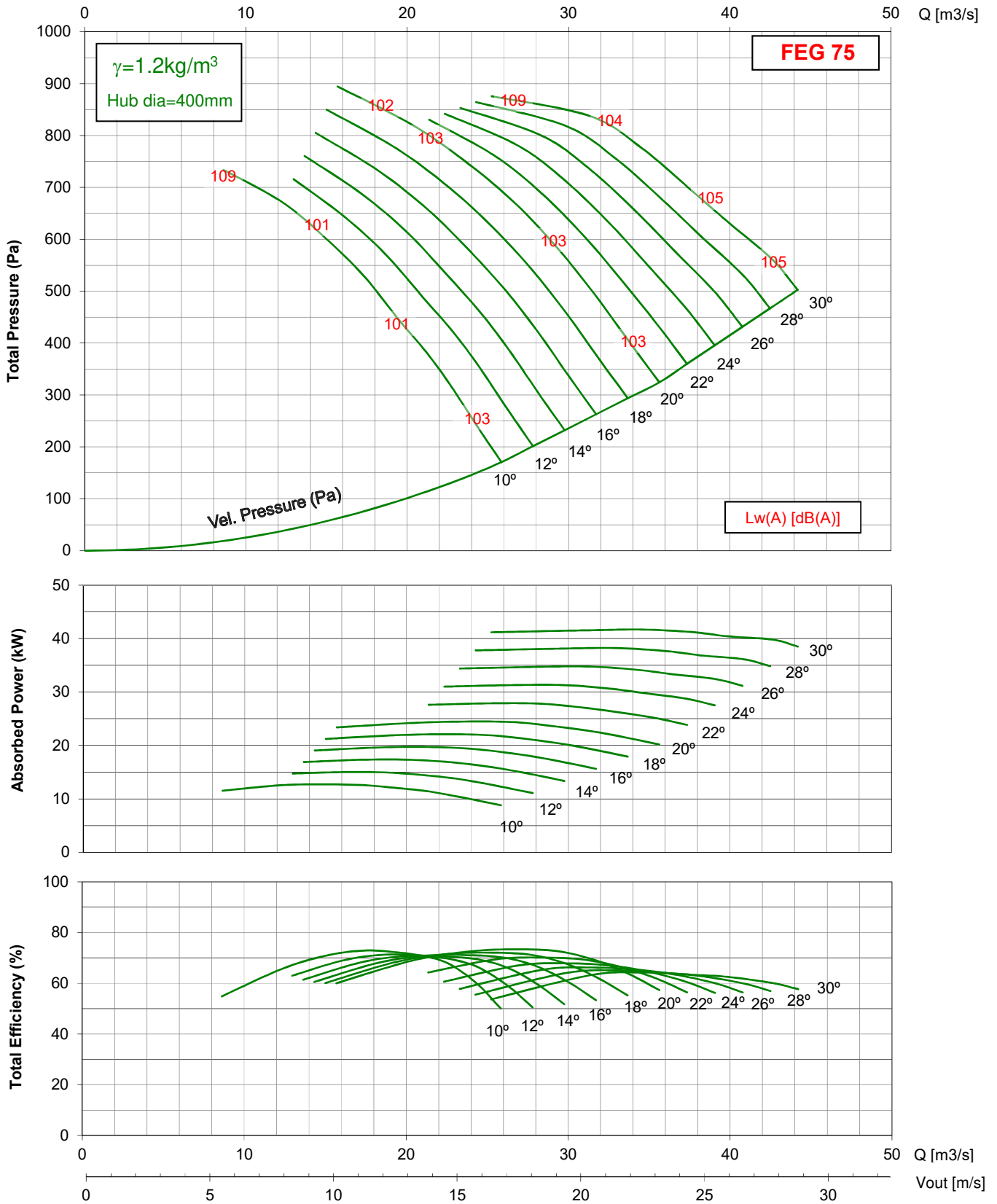
875 rpm - 60 Hz



- Performance certified is for installation type D - ducted inlet, ducted outlet. Performance ratings do not include the effects of appurtenances (accessories).
 - The A-weighted sound ratings shown here have been calculated per AMCA International Standard 301. Values shown are for inlet Lwi(A) sound power levels for Installation Type D - ducted inlet, ducted outlet. Ratings include the effects of duct end correction.

TDC 1400 / C22 / D / 4-9V

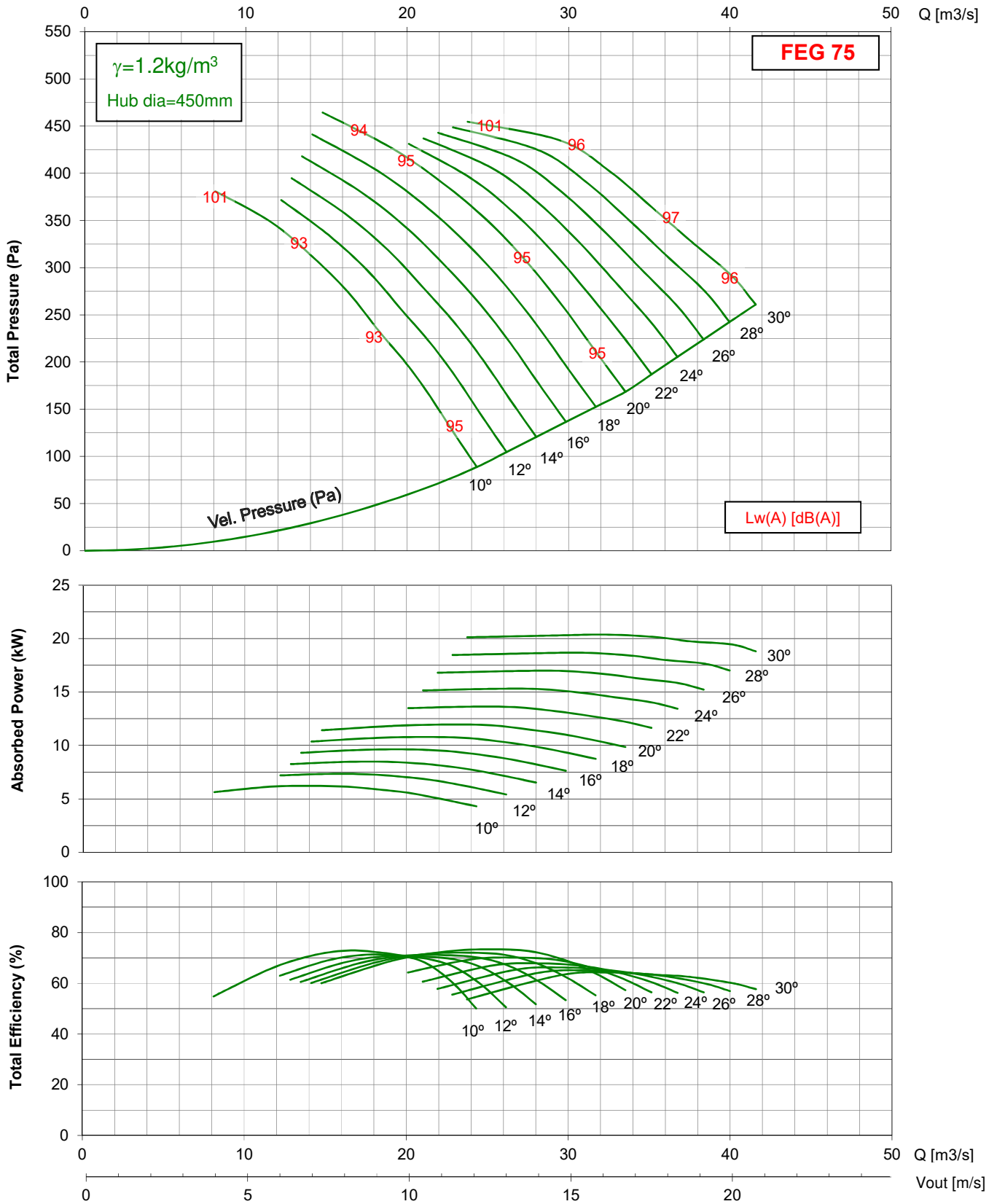
1150 rpm - 60 Hz



- Performance certified is for installation type D - ducted inlet, ducted outlet. Performance ratings do not include the effects of appurtenances (accessories).
 - The A-weighted sound ratings shown here have been calculated per AMCA International Standard 301. Values shown are for inlet Lwi(A) sound power levels for Installation Type D - ducted inlet, ducted outlet. Ratings include the effects of duct end correction.

TDC 1600 / C25 / D / 4-9V

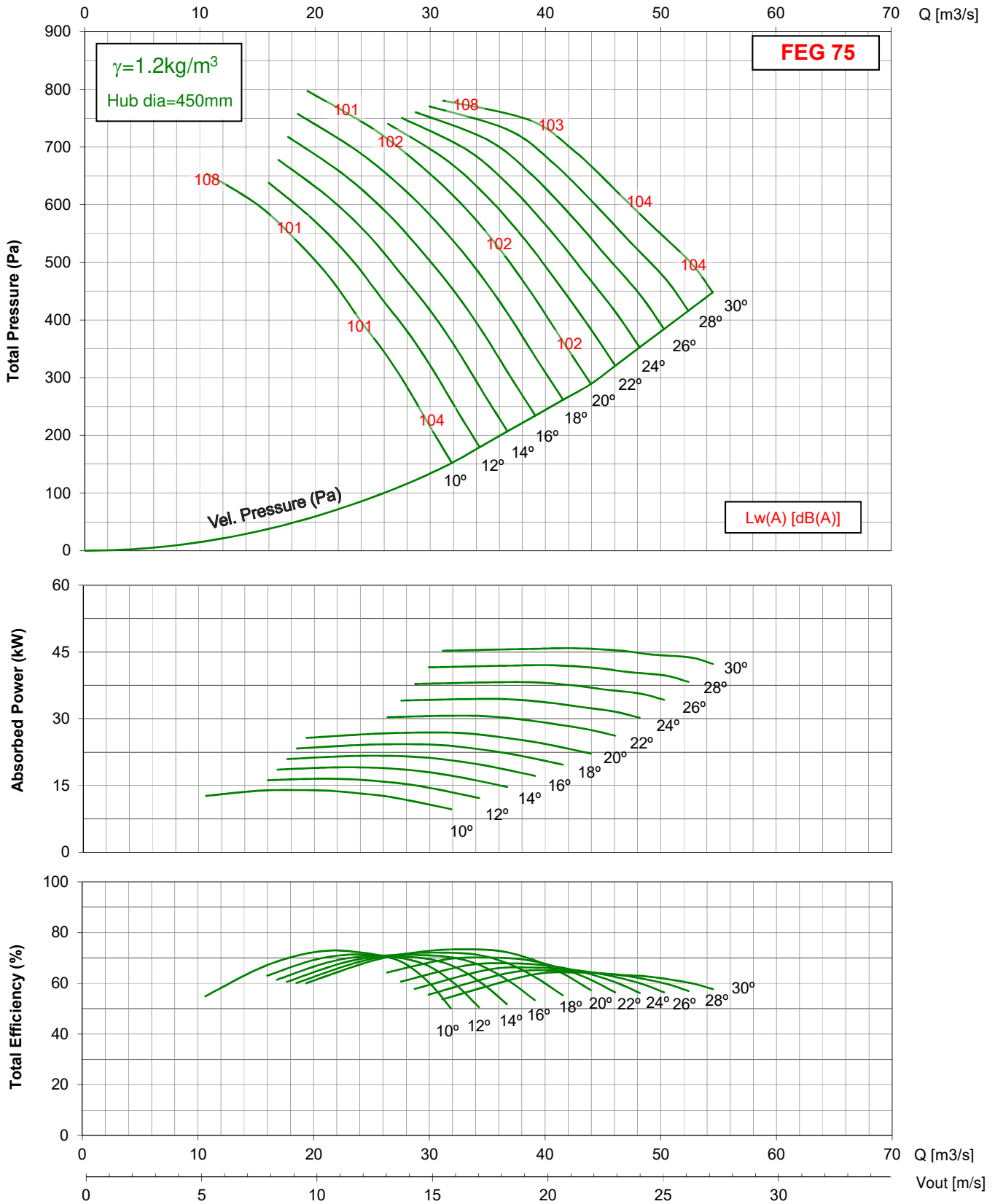
725 rpm - 50 Hz



- Performance certified is for installation type D - ducted inlet, ducted outlet. Performance ratings do not include the effects of appurtenances (accessories).
 - The A-weighted sound ratings shown here have been calculated per AMCA International Standard 301. Values shown are for inlet Lwi(A) sound power levels for Installation Type D - ducted inlet, ducted outlet. Ratings include the effects of duct end correction.

TDC 1600 / C25 / D / 4-9V

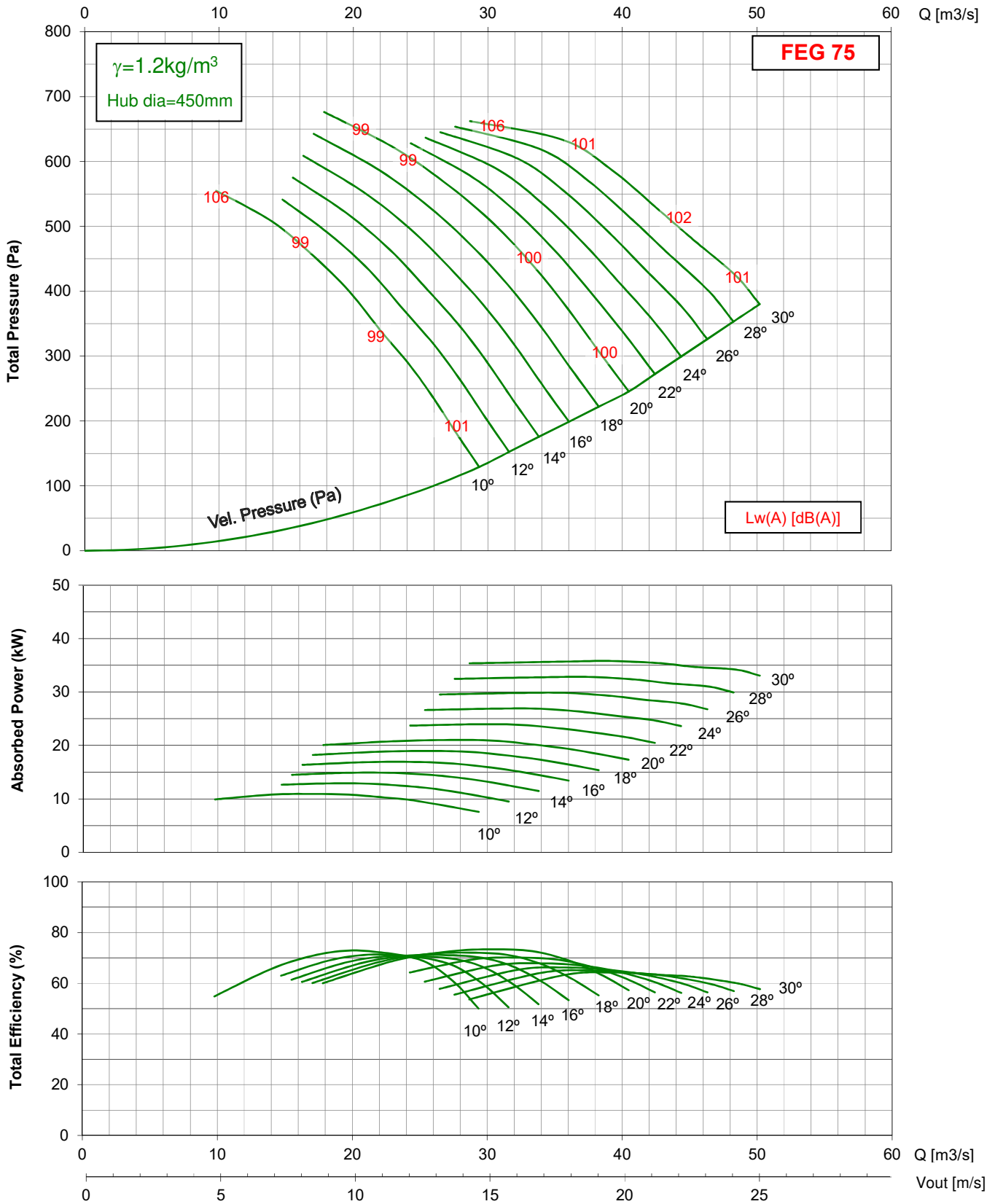
950 rpm - 50 Hz



- Performance certified is for installation type D - ducted inlet, ducted outlet. Performance ratings do not include the effects of appurtenances (accessories).
 - The A-weighted sound ratings shown here have been calculated per AMCA International Standard 301. Values shown are for inlet Lwi(A) sound power levels for Installation Type D - ducted inlet, ducted outlet. Ratings include the effects of duct end correction.

TDC 1600 / C25 / D / 4-9V

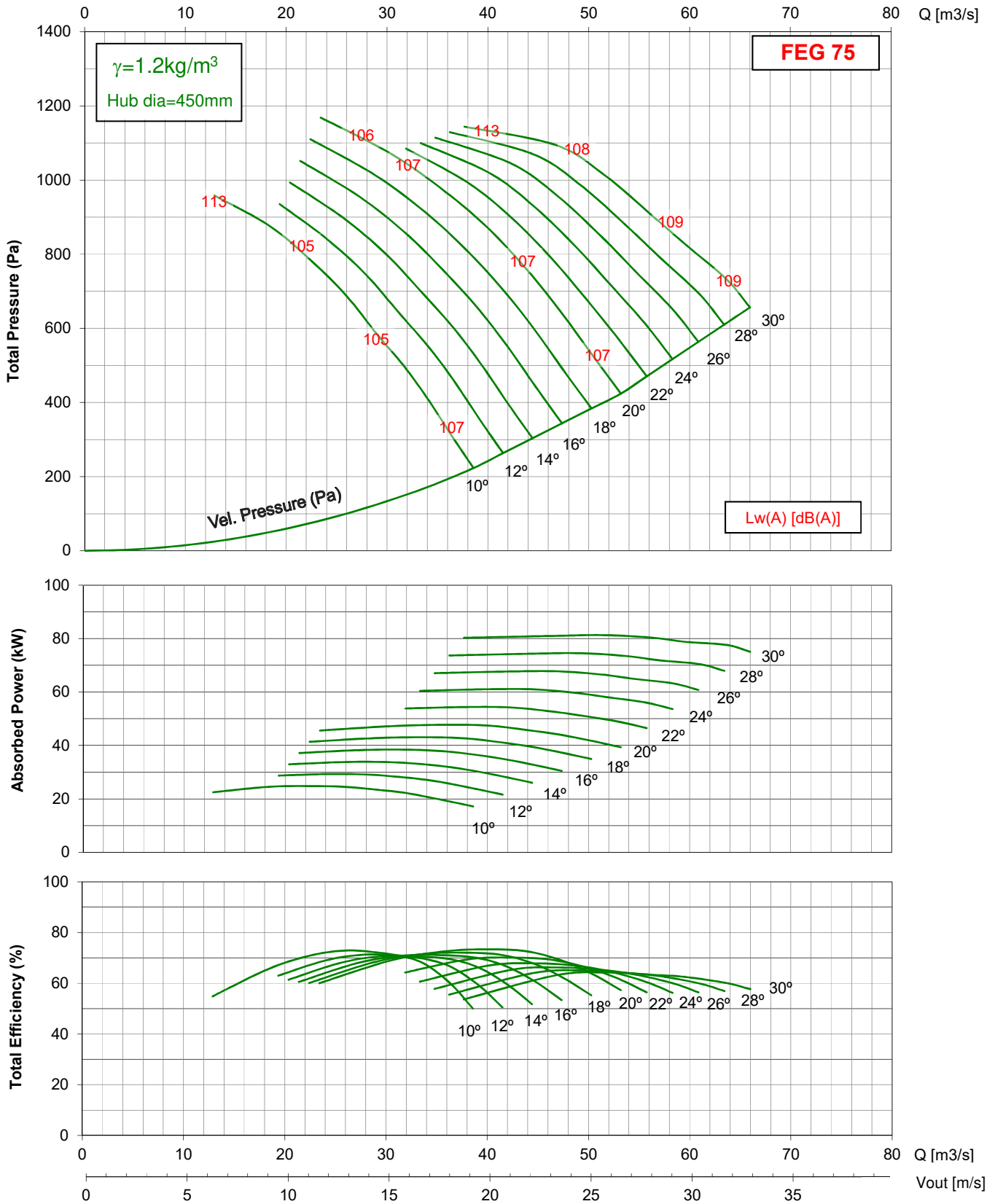
875 rpm - 60 Hz



- Performance certified is for installation type D - ducted inlet, ducted outlet. Performance ratings do not include the effects of appurtenances (accessories).
 - The A-weighted sound ratings shown here have been calculated per AMCA International Standard 301. Values shown are for inlet Lwi(A) sound power levels for Installation Type D - ducted inlet, ducted outlet. Ratings include the effects of duct end correction.

TDC 1600 / C25 / D / 4-9V

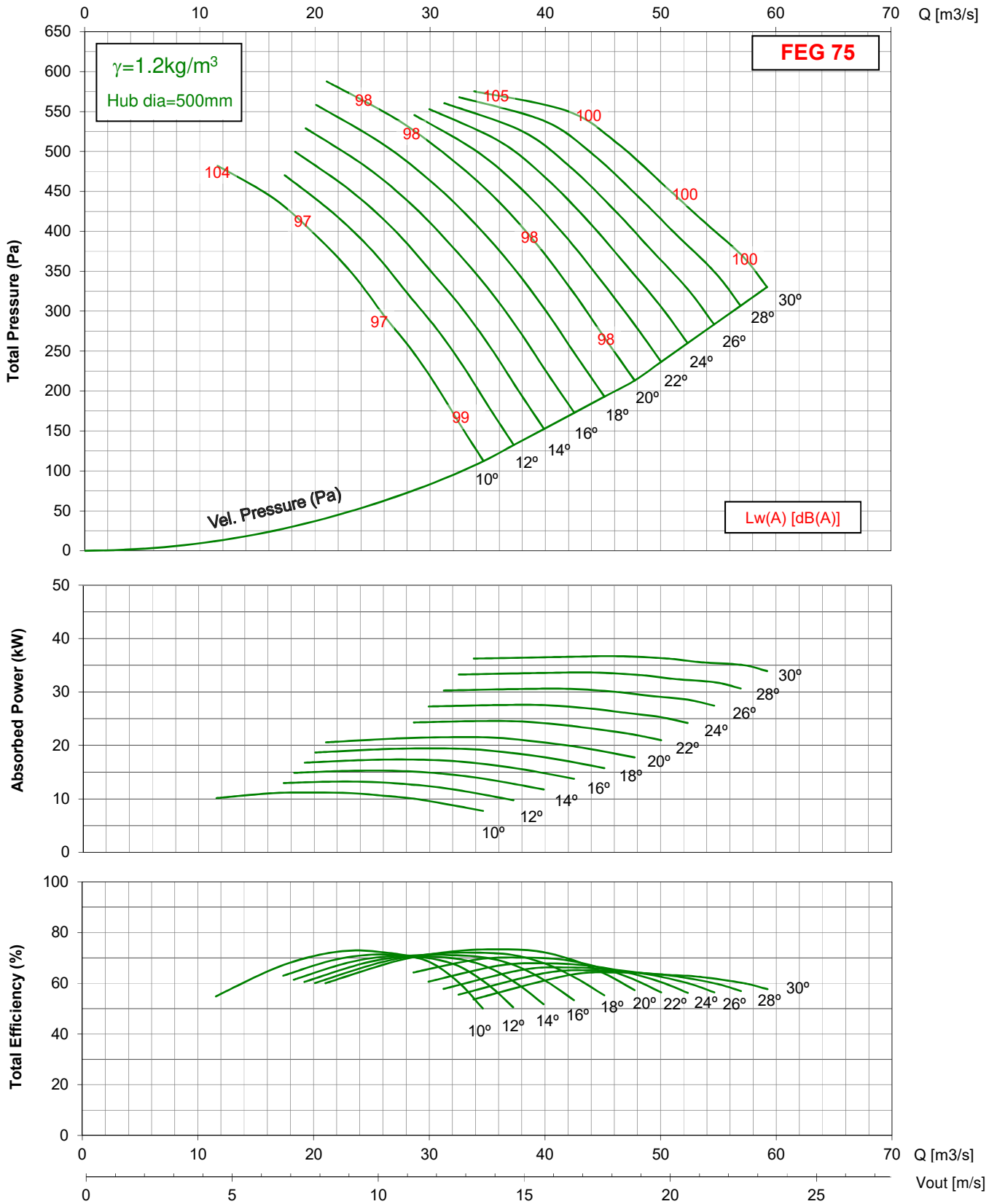
1150 rpm - 60 Hz



- Performance certified is for installation type D - ducted inlet, ducted outlet. Performance ratings do not include the effects of appurtenances (accessories).
 - The A-weighted sound ratings shown here have been calculated per AMCA International Standard 301. Values shown are for inlet Lwi(A) sound power levels for Installation Type D - ducted inlet, ducted outlet. Ratings include the effects of duct end correction.

TDC 1800 / C28 / D / 4-9V

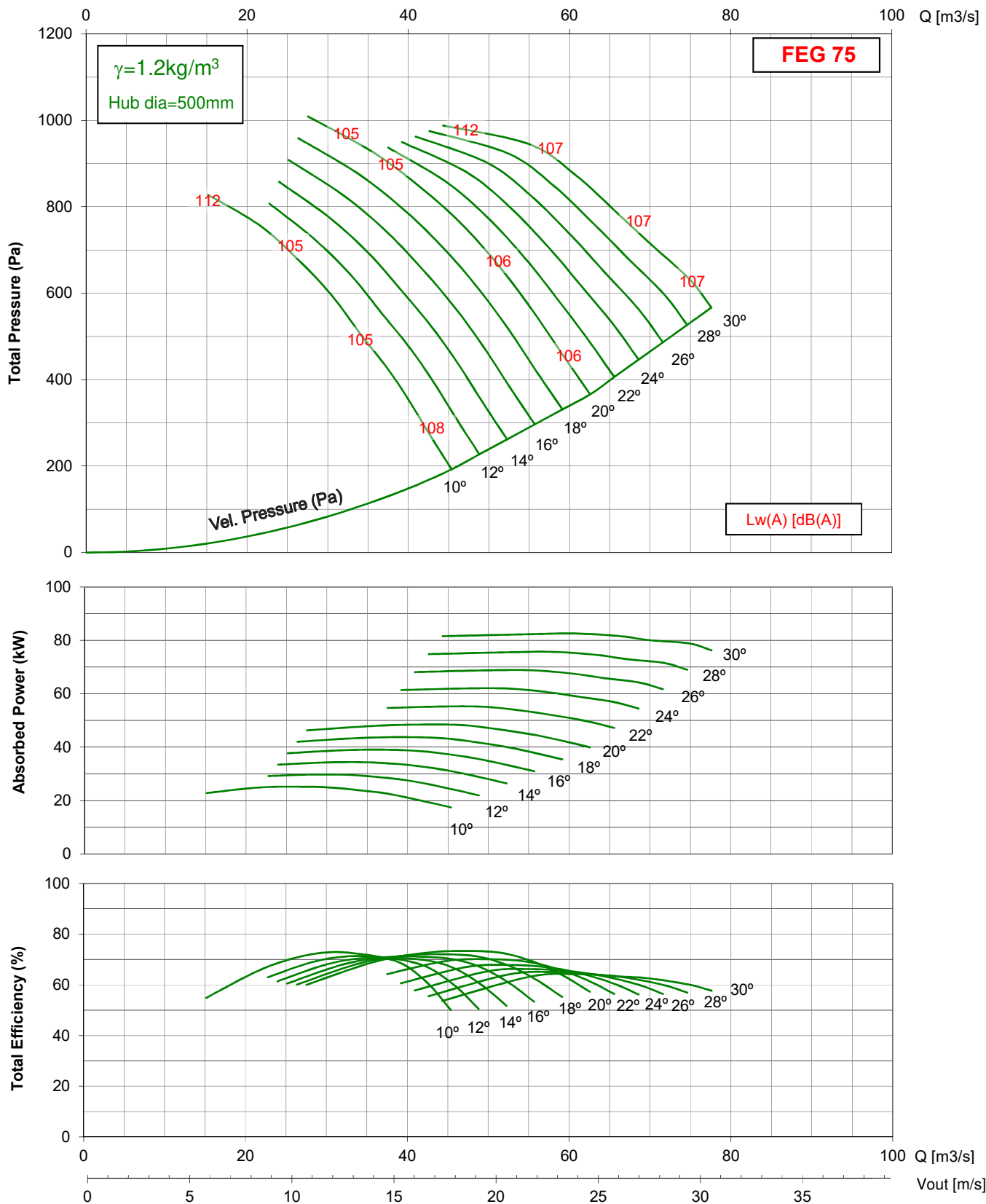
725 rpm - 50 Hz



- Performance certified is for installation type D - ducted inlet, ducted outlet. Performance ratings do not include the effects of appurtenances (accessories).
 - The A-weighted sound ratings shown here have been calculated per AMCA International Standard 301. Values shown are for inlet Lwi(A) sound power levels for Installation Type D - ducted inlet, ducted outlet. Ratings include the effects of duct end correction.

TDC 1800 / C28 / D / 4-9V

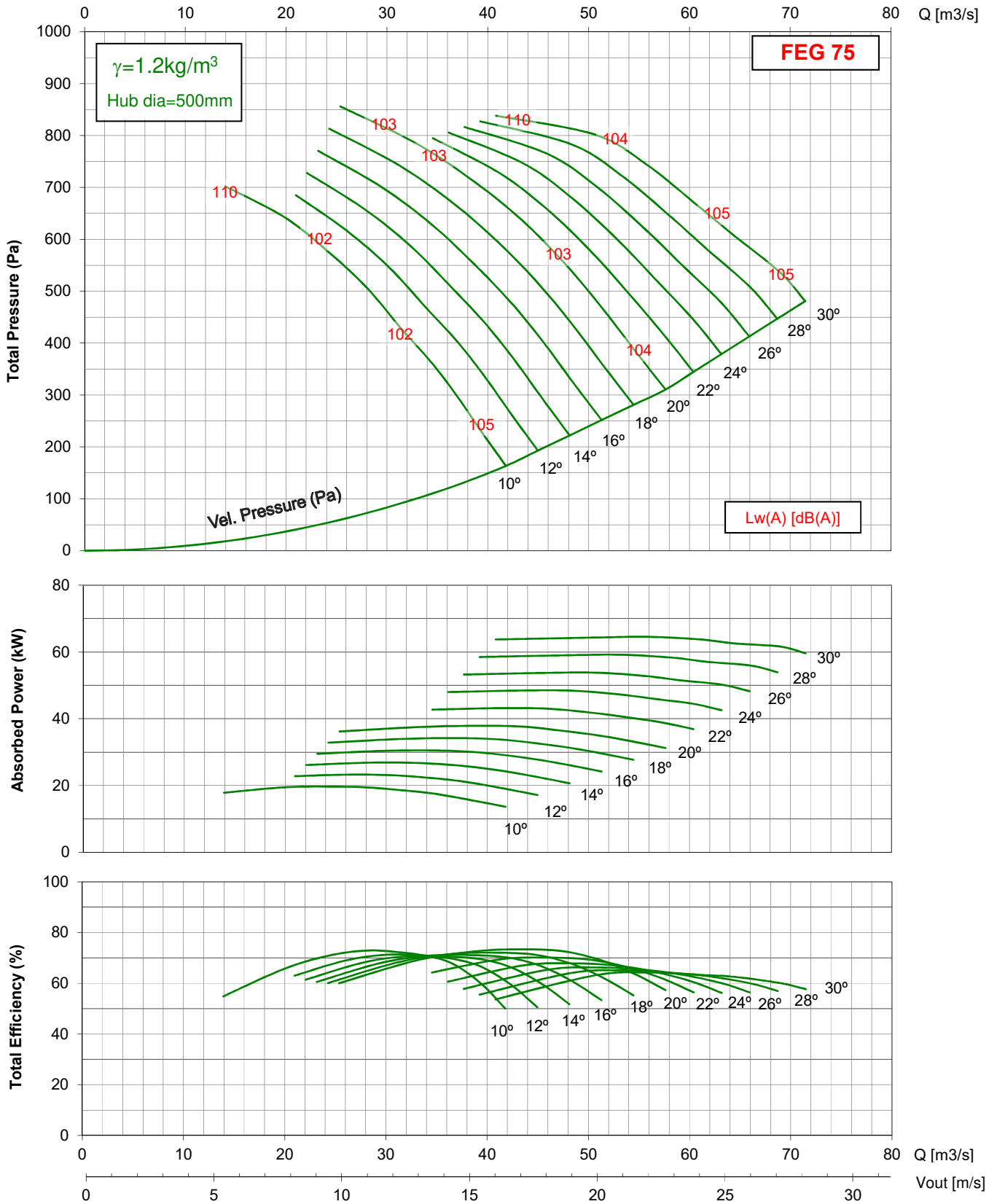
950 rpm - 50 Hz



- Performance certified is for installation type D - ducted inlet, ducted outlet. Performance ratings do not include the effects of appurtenances (accessories).
 - The A-weighted sound ratings shown here have been calculated per AMCA International Standard 301. Values shown are for inlet Lwi(A) sound power levels for Installation Type D - ducted inlet, ducted outlet. Ratings include the effects of duct end correction.

TDC 1800 / C28 / D / 4-9V

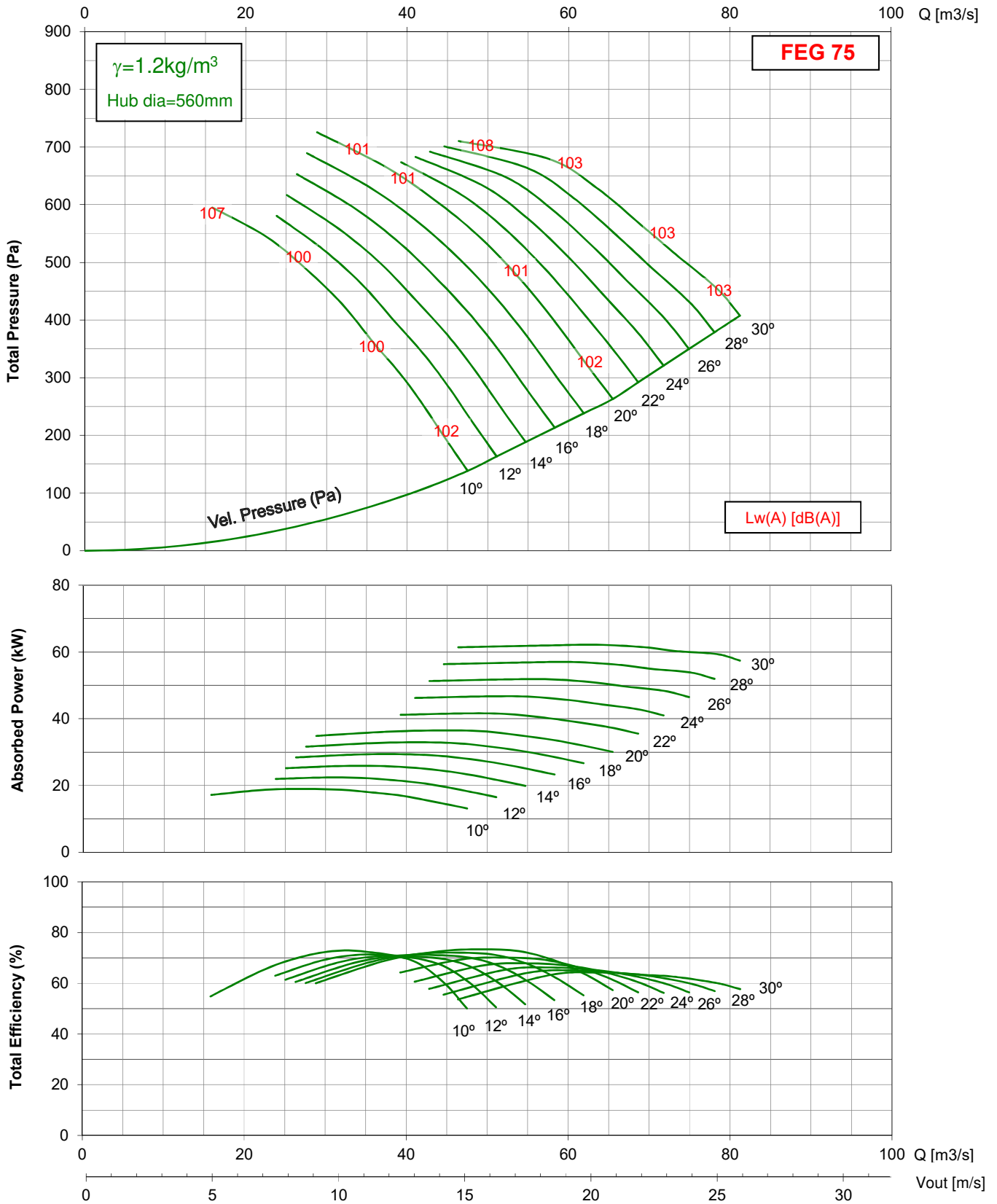
875 rpm - 60 Hz



- Performance certified is for installation type D - ducted inlet, ducted outlet. Performance ratings do not include the effects of appurtenances (accessories).
 - The A-weighted sound ratings shown here have been calculated per AMCA International Standard 301. Values shown are for inlet Lwi(A) sound power levels for Installation Type D - ducted inlet, ducted outlet. Ratings include the effects of duct end correction.

TDC 2000 / C31 / D / 4-9V

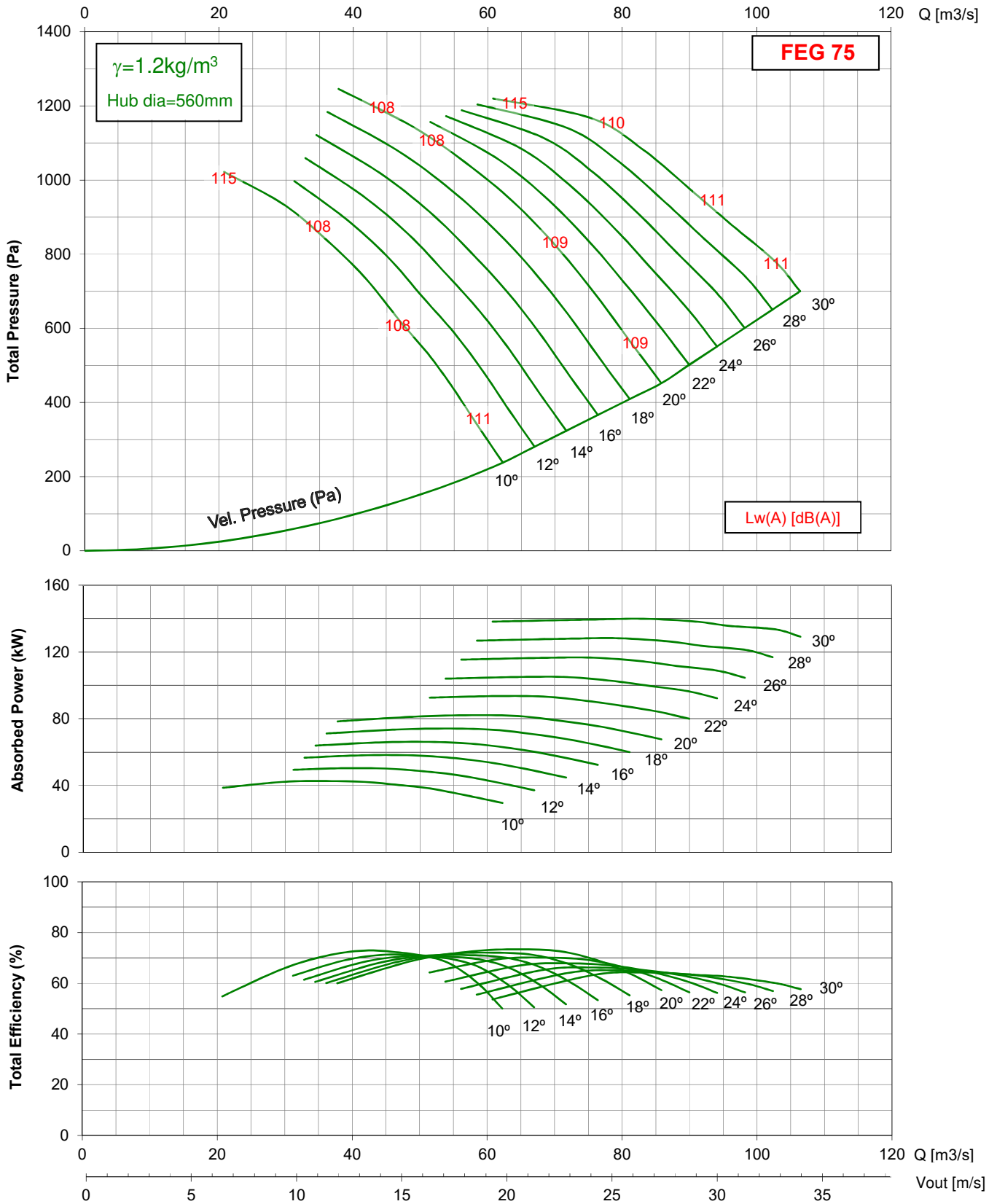
725 rpm - 50 Hz



- Performance certified is for installation type D - ducted inlet, ducted outlet. Performance ratings do not include the effects of appurtenances (accessories).
 - The A-weighted sound ratings shown here have been calculated per AMCA International Standard 301. Values shown are for inlet Lwi(A) sound power levels for Installation Type D - ducted inlet, ducted outlet. Ratings include the effects of duct end correction.

TDC 2000 / C31 / D / 4-9V

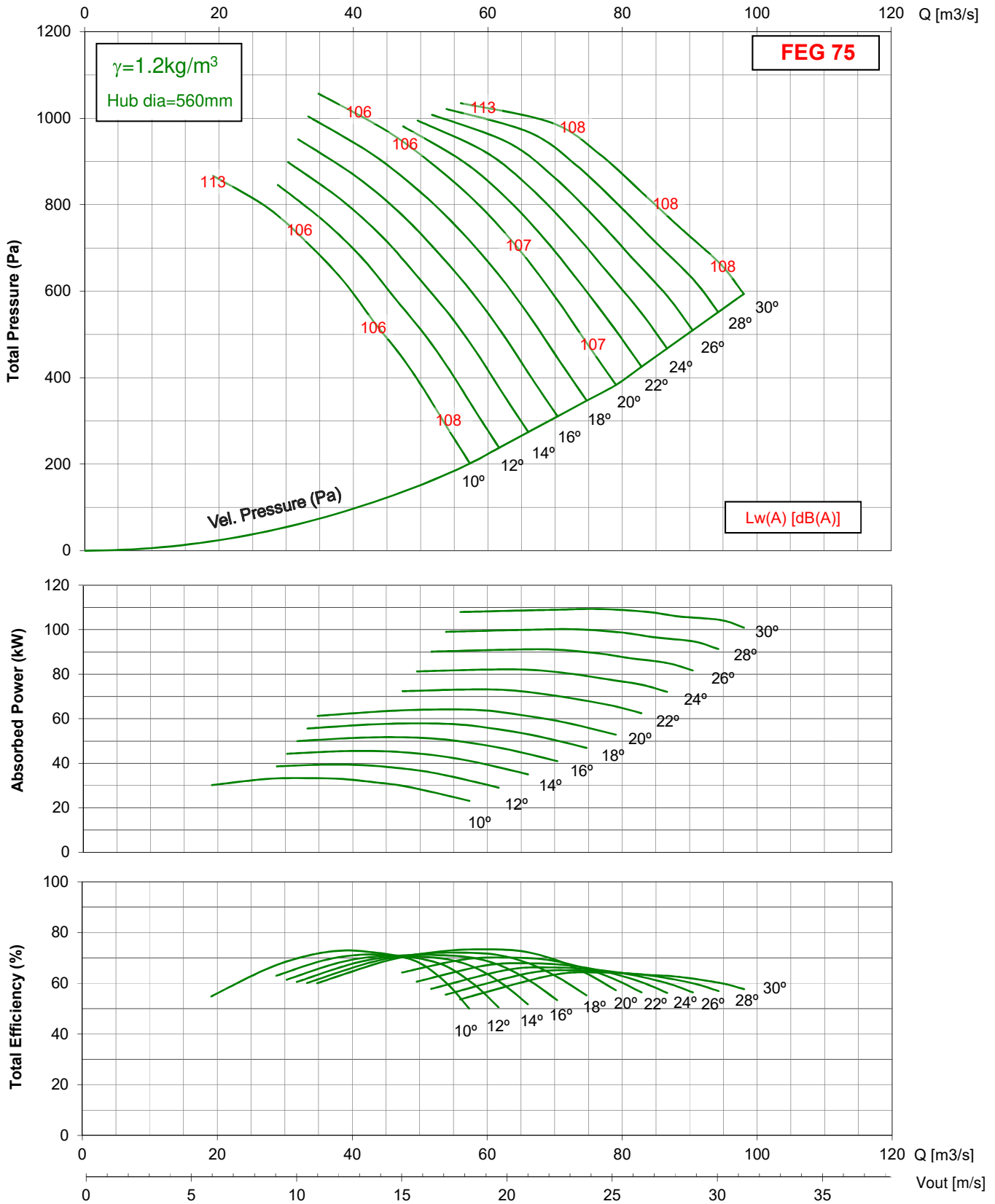
950 rpm - 50 Hz



- Performance certified is for installation type D - ducted inlet, ducted outlet. Performance ratings do not include the effects of appurtenances (accessories).
 - The A-weighted sound ratings shown here have been calculated per AMCA International Standard 301. Values shown are for inlet Lwi(A) sound power levels for Installation Type D - ducted inlet, ducted outlet. Ratings include the effects of duct end correction.

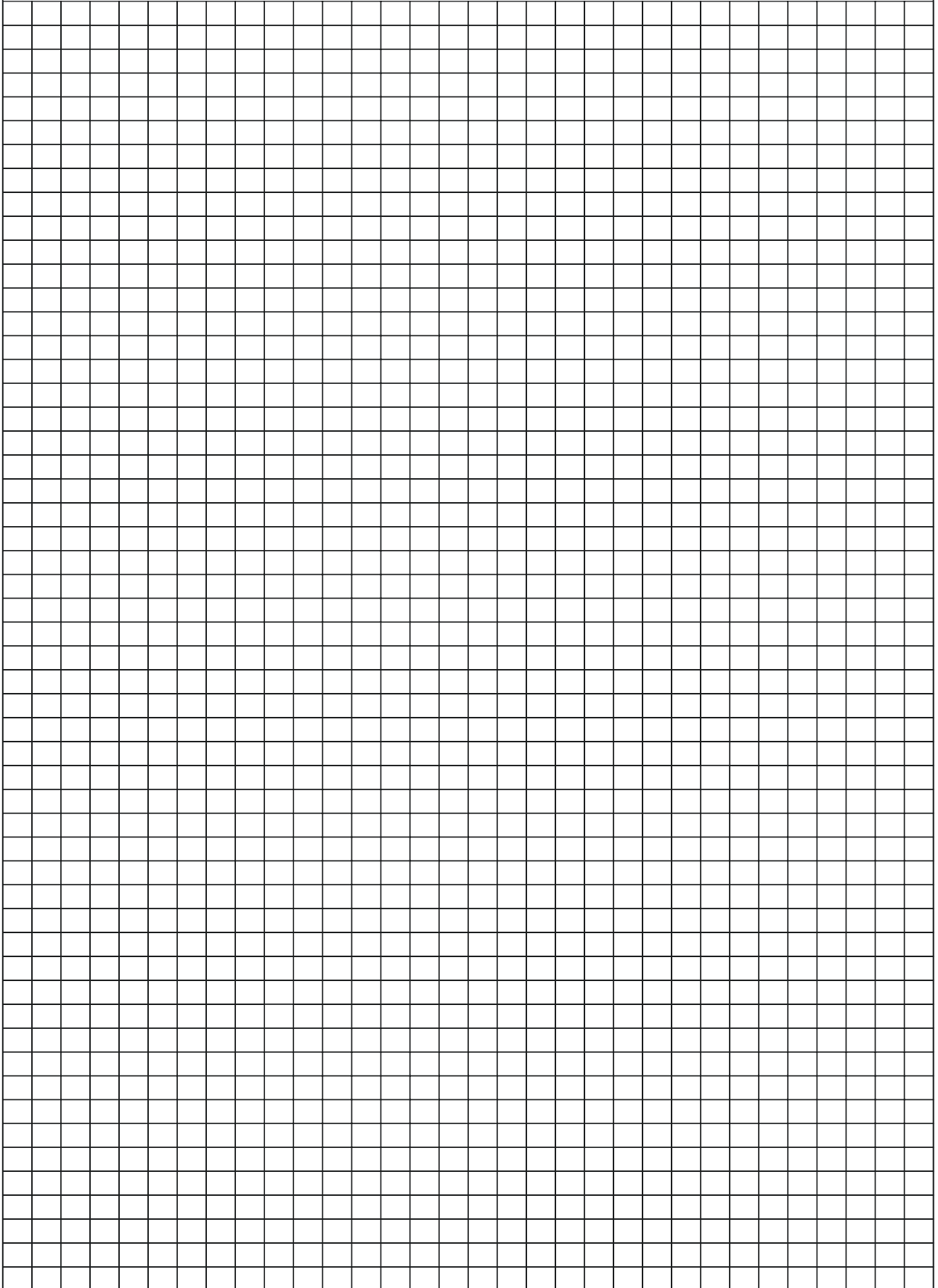
TDC 2000 / C31 / D / 4-9V

875 rpm - 60 Hz

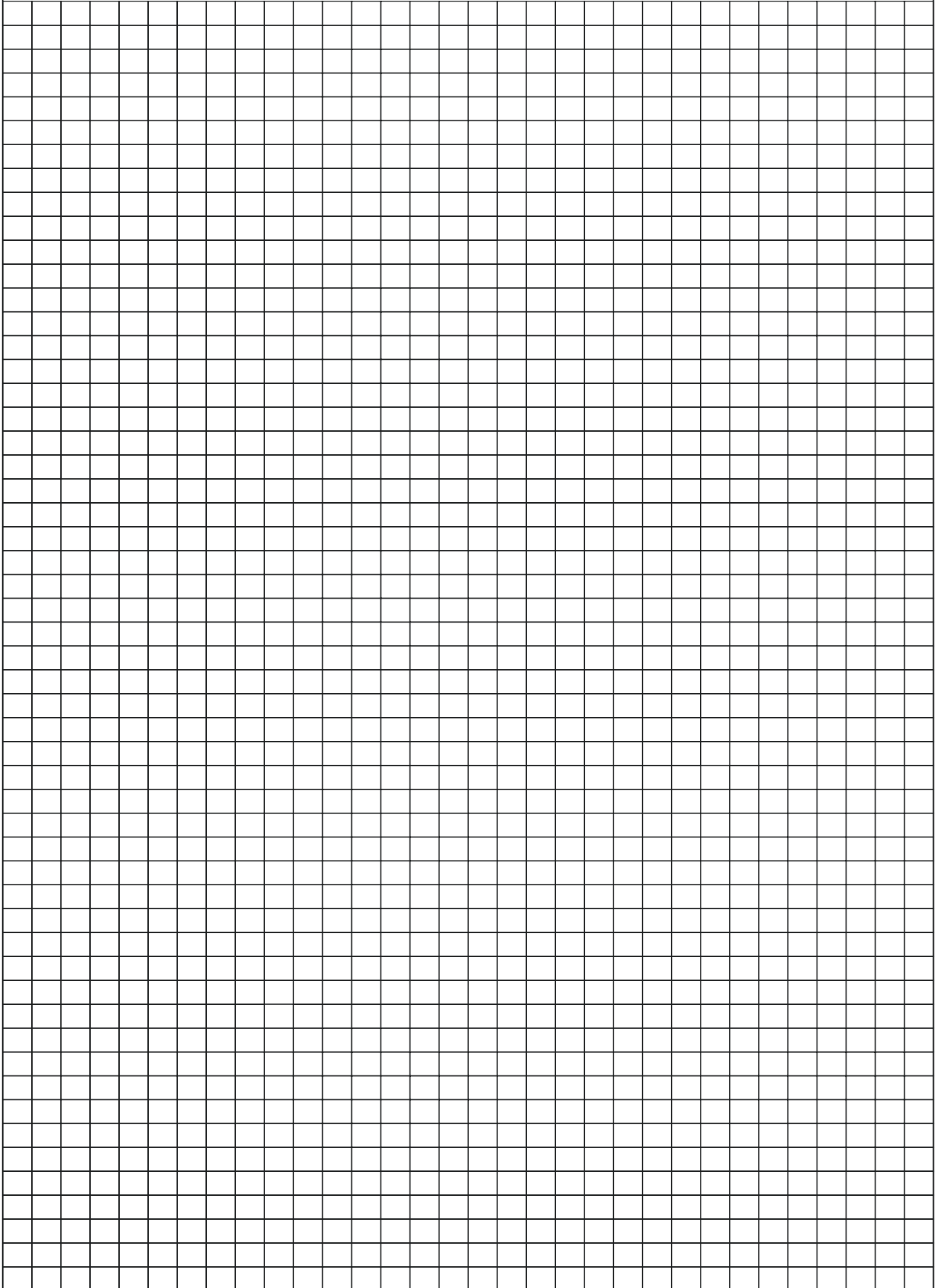


- Performance certified is for installation type D - ducted inlet, ducted outlet. Performance ratings do not include the effects of appurtenances (accessories).
 - The A-weighted sound ratings shown here have been calculated per AMCA International Standard 301. Values shown are for inlet Lwi(A) sound power levels for Installation Type D - ducted inlet, ducted outlet. Ratings include the effects of duct end correction.

NOTES



NOTES



KRUGER GROUP (VENTILATION)

• THAILAND (Regional HQ)

KRUGER VENTILATION INDUSTRIES ASIA CO. LTD.
30/159 Moo 1, Sinsakorn Industrial Estate,
Chetsadawithi Road, Khok Kham Mueng, Samuthsakorn 74000, Thailand
Tel. +662 1054298 - Fax +662 0248256-9
Website: www.krugerfan.com

• CHINA (BEIJING)

BEIJING KRUGER VENTILATION CO. LTD
Level 7, A Block, Rising International Building, 29 JingHai San Road, BDA,
Beijing, P.R.China 100176
Tel. +86 10-67881366 - Fax +86 10-67880566
Email: krugertj@krugertj.com

• CHINA (SHANGHAI)

SHANGHAI KRUGER VENTILATION CO. LTD
No. 500 Yuanguo Road, Anting, Jiading,
Shanghai 201814 P.R. China
Tel. +86 21-69573266 - Fax +86 21-69573296
Email: shkruger@krugerchina.com

• CHINA (WUHAN)

WUHAN KRUGER VENTILATION CO. LTD
No. 805, Huian Ave, Dongxihu District, Wuhan, Hubei, P.R. China 430000
Tel. +86 27- 83248840/83060522/83097505
Fax +86 27- 83261886
Email: whkruger@krugerwh.com

• HONG KONG

KRUGER VENTILATION (HONG KONG) LIMITED
Flat C, 9/F, Yeung Yiu Chung (No.8) Industrial Building,
20 Wang Hoi Road, Kowloon Bay, Kowloon, Hong Kong
Tel. +852 22469182 - Fax +852 22469187
Email: info@kruger.com.hk

• INDIA (NORTH)

KRUGER VENTILATION INDUSTRIES (NORTH INDIA) PVT LTD
Plot No. - 191, Sector - 59, Ballabgarh, Faridabad - 121 004, Haryana, India
Tel. +91-9958991660/9717449696
Fax. +91-1294135820
Email: sales.kni@krugerindia.com

• KOREA

NEOMATE CO. LTD
2-1010, Ace High Tech City B/D, 775 Gyeongin-ro,
Yeongdeungpo-gu, Seoul, Korea. Postal Code 07299
Tel. +82-2-2679-2052 - Fax. +82-2-2679-2174
Email: y7890@neomate.co.kr

• MYANMAR

KRUGER VENTILATION (MYANMAR) CO.LTD
Room No. F21, Thiri Yadanar Whole Sale Market, (Htawunbe)
Toe Chae Ward, North Okkalapa Township, Yangon.
Tel. +959 763141081/2/3
Email: htoon@krugermm.com

• SINGAPORE

KRUGER ENGINEERING PTE LTD
No. 10 Buroh Street #06-06, West Connect Building,
Singapore 627564
Tel. +65 68631191 - Fax +65 68631151
Email: mktg@krugerasia.com

• THAILAND

KRUGER VENTILATION IND. (THAILAND) CO. LTD
30/105 Moo 1, Sinsakorn Industrial Estate,
Chetsadawithi Road, Khok Kham Mueng, Samuthsakorn 74000, Thailand
Tel. +662 1050399 - Fax + 662 1050370-2
Email: mktg@kruger.co.th

• AUSTRALIA

S&P-KRUGER AUSTRALIA PTY LTD
2 Cunningham St, Moorebank N.S.W. 2170
Tel. +61 2-98227747
Fax. +61 2-98227757
Email: info@sandpkruger.com.au

• CHINA (GUANGZHOU)

GUANGZHOU KRUGER VENTILATION CO. LTD
No. 9 Huahui Road, Huashan, Huadu,
Guangzhou, P.R. China 510880
Tel. +86 20-66356635 - Fax +86 20-86786001/86786500
Email: gzkruger@krugergz.com

• CHINA (TIANJIN)

TIANJIN KRUGER VENTILATION CO. LTD
No.168 Anyuan Road, Jingjin Science and Technology Park
Wuqing District, Tianjin, China
Tel. +86 22-22143480/3481 - Fax +86 22-22143482
Email: krugertj@krugertj.com

• DUBAI

KRUGER VENTILATION INDUSTRIES, GULF BRANCH
Jebel Ali Free Zone Area (JAFZA) P.O. Box No. 262949, Dubai, UAE
Tel. +971 4 8819188/8832017
Fax. +971 4 8832018
Email: johncs@krugerasia.com

• INDIA

KRUGER VENTILATION INDUSTRIES (INDIA) PVT LTD
Kruger Centre, Mumbai-Nasik Highway,
Kalamgaon, Shahapur, Thane 421601, Maharashtra, India
Tel. +91 9960558899/9975577211 - Fax +91 2527 240075
Email: sales@krugerindia.com

• INDONESIA

P.T. KRUGER VENTILATION INDONESIA
JL. Teuku Umar No.20,
Karawaci - Tangerang 15115, Indonesia
Tel. +62 21-5512288/5513557 - Fax +62 21-5513502
Email: mktg@krugerindo.co.id

• MALAYSIA

KRUVENT INDUSTRIES (M) SDN BHD
Lot 850, Jalan Subang 7, Taman Perindustrian Subang,
47500, Subang Jaya, Selangor D.E.
Tel. +603 80743399 - Fax +603 80743388
Email: mktg@kruger.com.my

• PHILIPPINES

KRUGER M&E INDUSTRIES CORPORATION
FAPI Compound, E. Rodriguez Ave.
Tunasan, Muntinlupa City 1773, Philippines
Tel. +63 2-8622892/4/6/7, 5534059 - Fax +63 2-8622891
Email: mktg@krugerph.net

• TAIPEI

KRUGER VENTILATION (TAIWAN) CO. LTD
No. 157, Ping-an Rd, Hengfeng Village,
Dayuan Shiang Taoyuan County 337, Taiwan
Tel. +886 3-3859119 - Fax +886 3-3859118
Email: sales@krugertwn.com.tw

• VIETNAM

KRUGER VENTILATION INDUSTRIES (VIETNAM) CO. LTD
Lot A7. 2-4, C2 Road, Thanh Thanh Cong IZ,
Trang Bang Dist. Tay Ninh Province, Vietnam
Tel. +84-276 3585200/01/02 - Fax +84-276 3585199
Email: mktg@krugervn.com

The company is always improving and developing its products, therefore the company reserves the right of making changes to the illustrated products. Certified dimension can be provided upon request.