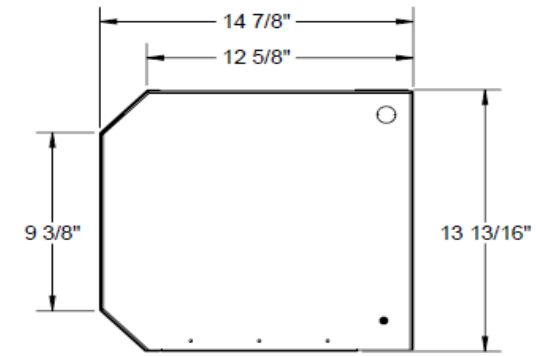
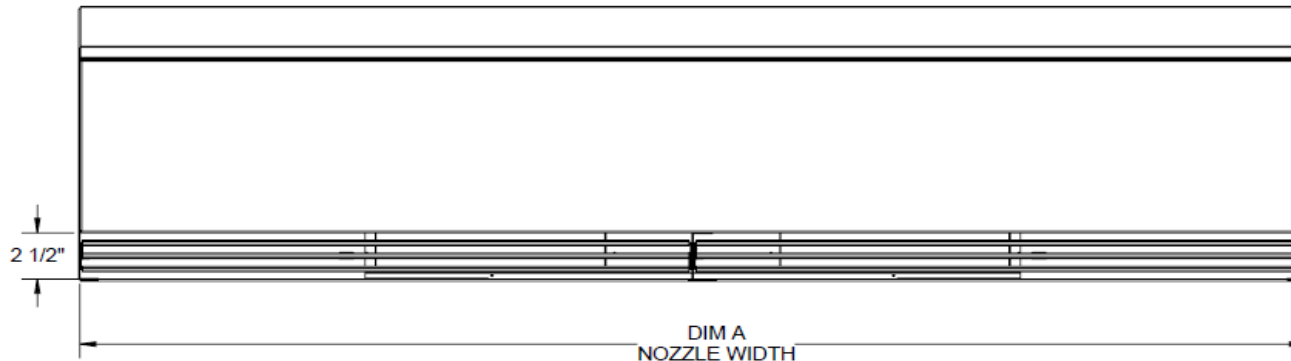


Top View



Side View



Bottom View

RECOMMENDED ACCESSORIES

	Model
• Motor Control Panel	800B
• Adj. Hi Traffic Time Delay	600-5
• Door Sw., Ind Mag Surface Mount	200-5

STANDARD FEATURES

- High performing, industrial strength
- Corrosion resistant powder-coated exterior cabinet
- Easy threaded-rod installation option
- Five-year parts warranty
- Environmental Protection: 12'
- Manufactured in America since 1916

Williams Comfort Products reserves the right to alter specifications without prior notice.

MODEL NUMBER	UNIT LENGTH B	NOZZLE LENGTH "A"	THREADED RODS "B"
MAXT042-00	42	41 7/8"	40 1/4"
MAXT048-00	48	47 7/8"	46 1/4"
MAXT060-00	60	59 7/8"	58 1/4"
MAXT072-00	72	71 7/8"	70 1/4"
MAXT084-00	84"	83 7/8"	82 1/4"
MAXT096-00	96"	95 7/8"	94 1/4"
MAXT108-00	108"	107 7/8"	106 1/4"
MAXT120-00	120"	119 7/8"	118 1/4"
MAXT144-00	144"	143 7/8"	142 1/4"

Certifications



Williams Comfort Products certifies that the Air Curtains shown herein are licensed to bear the AMCA Seal. The ratings shown are based on tests and procedures performed in accordance with AMCA Publication 211 and AMCA Publication 311 and comply with the requirements of the AMCA Certified Ratings Program.



Project

Location

Architect

Engineer

May 2018

Lit. # L6023

MAX TECH Series (Unheated)

WILLIAMS

250 West Laurel Street • Colton • CA • 92324
909.825.0093 • www.wfc-fc.com

PROJECT: _____ DRWG.: _____ ENGINEER/ARCHITECT: _____

CONTRACTOR: _____ PAGE: _____ OF _____

DATE: _____

MODEL	WEIGHT (LBS)	MOTOR DATA							Lab Data		AMCA Data				
		MOTOR HP	MOTOR RPM	Qty Motors	FLA* SINGLE PHASE		FLA* THREE PHASE		MAX FPM At Nozzle	MAX CFM	LwA dBA	Average Velocity FPM	Average CFM	Uniformity %	Power Rating (kW)
					115V	208/230V	208/230V	460V							
MAXT042-00	95	1	1,725	1	N/A	N/A	3.2 / 3.2	1.6	4,432	3,600	87	6,636	1,556	83	883
MAXT048-00	99	1	1,725	1	N/A	N/A	3.2 / 3.2	1.6	3,880	3,600	88	6,925	1,612	79	961
MAXT060-00	132	1	1,725	1	N/A	N/A	3.2 / 3.2	1.6	3,104	3,600	89	5,280	1,645	39	993
MAXT072-00	147	1	1,725	2	N/A	N/A	6.4 / 6.4	3.2	4,985	7,200	89	6,414	2,995	75	1754
MAXT084-00	169	1	1,725	2	N/A	N/A	6.4 / 6.4	3.2	4,432	7,200	90	6,552	3,276	75	1894
MAXT096-00	191	1	1,725	2	N/A	N/A	6.4 / 6.4	3.2	3,880	7,200	88	6,925	3,224	79	1922
MAXT108-00	216	1	1,725	3	N/A	N/A	9.6 / 9.6	4.8	5,432	10,800	89	5,280	3,257	39	1954
MAXT120-00	238	1	1,725	3	N/A	N/A	9.6 / 9.6	4.8	4,656	10,800	89	5,280	3,290	39	1986
MAXT144-00	279	1	1,725	4	N/A	N/A	12.8 / 12.8	6.4	4,985	14,000	89	6,414	5,990	75	3508

-The AMCA Certified Ratings Seal applies to airflow rate, average outlet velocity, outlet velocity uniformity, velocity projection and power rating at free delivery only.

-Rated data shown are only for base (unheated) units, as shown.

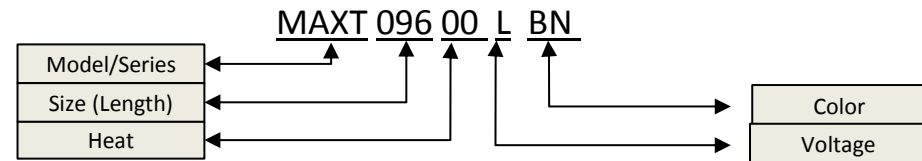
-The A-weighted sound ratings shown have been calculated per AMCA International Standard 301.

-Installation Type A: free inlet, free outlet

- Operation at 50 Hz will generate approximately a 17% reduction in performance
- Rated data shown for unheated units

- **EQUIPMENT SPECIFICATIONS** – Standard features, other options available
- **GENERAL DESCRIPTION**– Air curtains are to be MaxTech models, made by Williams Comfort Products
- **CABINET** – Constructed of heavy-gauge galvanized steel, treated with a powder-coated epoxy finish for corrosion resistance. Designed for easy access to filter and for service maintenance. Equipped with easily adjustable aluminum vanes for the most efficient air flow as needed. Easy direct-wall mount (key slots) or top threaded-rod installation option. Available in stainless, white, black and custom colors.
- **MOTORS & FAN WHEELS** – Motors are 1 HP; galvanized wheels and a housing fabricated of galvanized durable steel.
- **ELECTRICAL**– All motor leads are terminated in an internal, watertight junction box (1) per motor.
- **APPROVALS** – Air curtains meet the requirements of the National Electric Code and are ETL certified to UL Standard 1995. Also in accordance with AMCA Publication 211 and 311 and comply with the requirements of the AMCA Certified Ratings Program.
- **ACCESSORIES** – Please see options and accessories page

*For minimum circuit ampacity, multiply FLA x 1.25



Size	Code
42"	042
48"	048
60"	060
72"	072
84"	084
96"	096
108"	108
120"	120
144"	144

Projection Velocity		
MODEL	Distance from nozzle (in)	Average core velocity (FPM)
MAXT084-00	40	1433
	80	1267
	120	1086
	160	979

Color	Code	Voltage	Code
Br Nickel	BN	208/3	G
White	WH	230/3	H
Black	BL	460/3	L
Stainless	SS		

(60Hz)

MAX TECH Series - (Unheated)

250 West Laurel Street ▪ Colton ▪ CA ▪ 92324

909.825.0093 ▪ www.wfc-fc.com