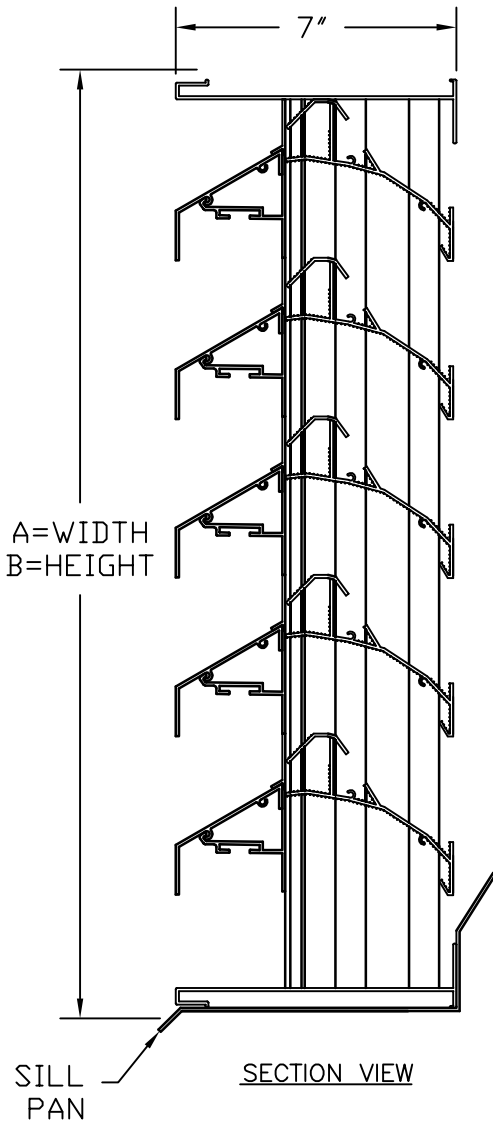


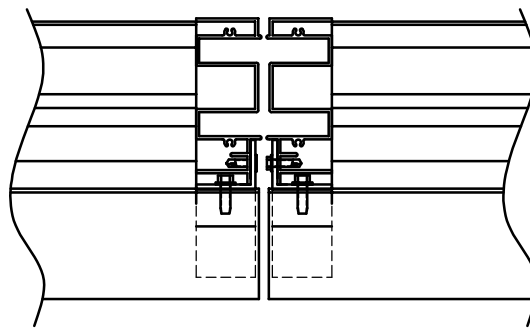
EXTRUDED ALUMINUM, 7" DEEP, HORIZONTAL
FIXED TYPE BLADE FOR WIND DRIVEN RAIN



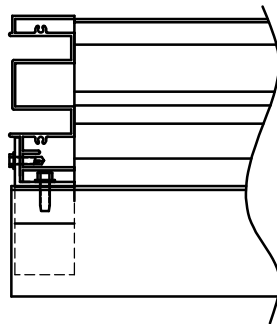
SECTION VIEW

MODEL LE-73
STANDARD SPECIFICATIONS

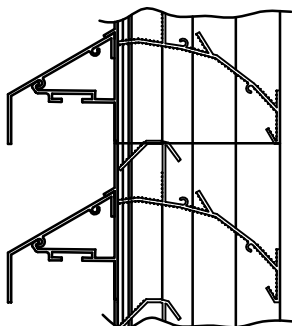
- FRAME: 7" DEEP CHANNEL, .081" THICK 6063-T5 EXTRUDED ALUMINUM ALLOY.
- BLADES: .081" THICK 6063-T5 EXTRUDED ALUMINUM ALLOY.
- FINISH: MILL.
- SILL PAN: .050 THICK FORMED ALUMINUM.
- SCREEN: 1/2" REMOVABLE EXPANDED ALUMINUM BIRD SCREEN, LOCATED ON INTERIOR.
- MAXIMUM PANEL SIZE: 96" X 96".
- MINIMUM PANEL SIZE: 12" X 12".
- DIMENSIONS: "A" (WIDTH) AND "B" (HEIGHT) ARE OPENING SIZES. LOUVERS ARE MADE 1/2" UNDERSIZE.



STANDARD VERTICAL
MULLION



STANDARD JAMB



STANDARD HORIZONTAL
MULLION



American Warming and Ventilating certifies that the model LE-73 louver shown herein is licensed to bear the AMCA Seal. The ratings shown are based on tests and procedures performed in accordance with AMCA Publication 511 and comply with the requirements of the AMCA Certified Ratings Program. The AMCA Certified Ratings Seal applies to Air Performance, Water Penetration and Wind Driven Rain only.

awv american warming and ventilating

A MESTEK COMPANY

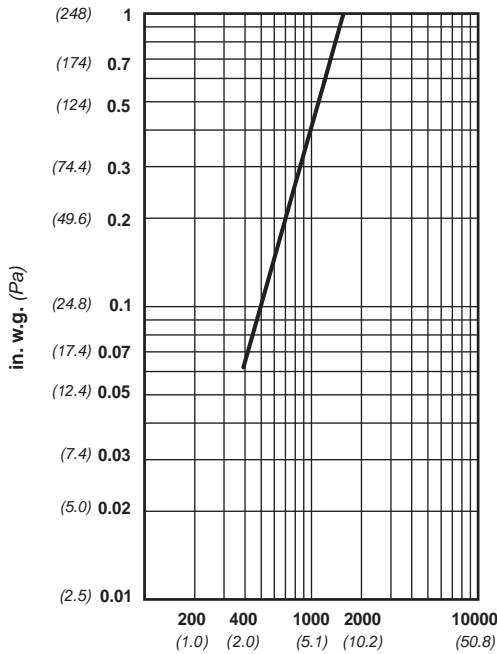
7301 INTERNATIONAL DRIVE HOLLAND, OHIO
Phone (419) 865-5000 Fax (419) 865-1375

LE-73 STATIONARY LOUVER

DRN. BY JMC	DWG. NO. LE-73	REV.
DATE 12/5/17		

Water Penetration : 0.01 oz (3.0 g) at 834 fpm (4.17 m/s) recommended free area velocity
Pressure Drop : 0.28 in wg (71.0 Pa.) at 834 fpm (4.17 m/s) and 6140 scfm (2.9 scm/s)
Free Area : 7.36 sq ft (0.684 sq m) = 46.0% for 48" x 48" (1.22m x 1.22m) test size

INTAKE PRESSURE DROP



VELOCITY THROUGH FREE AREA fpm (m/s)

Airflow at standard air density - .075 lbs per cu ft
 Ratings do not include the effect of a wire bird screen
 Test based on a 48" x 48" test size per AMCA Standard 511
 AMCA Figure 5.5 Test Setup

FREE AREA IN SQUARE FEET (sq meters)

		WIDTH								
		in. mm	12 305	24 610	36 914	48 1219	60 1524	72 1829	84 2134	96 2438
HEIGHT	12 305	0.22	0.54	0.85	1.17	1.48	1.80	2.11	2.43	
	24 610	0.057	0.138	0.219	0.300	0.381	0.462	0.543	0.624	
	36 914	1.01	2.44	3.87	5.30	6.73	8.16	9.59	11.02	
	48 1219	0.094	0.226	0.359	0.492	0.625	0.758	0.890	1.023	
	60 1524	1.40	3.39	5.37	7.36	9.35	11.34	13.32	15.31	
	72 1829	0.130	0.315	0.499	0.684	0.868	1.053	1.238	1.422	
	84 2134	1.79	4.34	6.88	9.43	11.97	14.52	17.06	19.61	
	96 2438	0.166	0.403	0.639	0.876	1.112	1.348	1.585	1.821	
	12 305	2.19	5.29	8.39	11.49	14.59	17.70	20.80	23.90	
24 610	0.203	0.491	0.779	1.067	1.356	1.644	1.932	2.220		
36 914	2.58	6.24	9.90	13.56	17.22	20.88	24.54	28.20		
48 1219	0.239	0.579	0.919	1.259	1.599	1.939	2.279	2.619		
60 1524	2.97	7.19	11.40	15.62	19.84	24.06	28.27	32.49		
72 1829	0.276	0.668	1.059	1.451	1.843	2.235	2.626	3.018		

Wind-Driven Rain Penetration Classes: C		Discharge Loss Coefficient Classes:	
Class	Effectiveness	Class	Coefficient
A	100% to 99%	1	0.4 & above
B	98.9% to 95%	2	0.3 to 0.399
C	94.9% to 80%	3	0.2 to 0.299
D	Below 80%	4	0.199 & below

Wind Driven Rain Performance

75 mm/h (3 in./hr) Rainfall \$ 13 m/s (29 mph) Wind Velocity						202 mm/h (8 in./hr) Rainfall \$ 22 m/s (50 mph) Wind Velocity					
Free Area Velocity		Ventilation Air Core Velocity		Water Penetration		Free Area Velocity		Ventilation Air Core Velocity		Water Penetration	
(fpm)	(m/s)	(fpm)	(m/s)	Class	Effective	(fpm)	(m/s)	(fpm)	(m/s)	Class	Effective
0	0.0	0	0.0	A	>=99.8%	0	0.0	0	0.0	A	99.7%
161	0.8	109	0.6	A	99.8%	130	0.7	88	0.4	A	99.5%
290	1.5	197	1.0	A	99.8%	295	1.5	200	1.0	A	99.3%
414	2.1	281	1.4	A	99.3%	427	2.2	290	1.5	B	98.9%
577	2.9	392	2.0	B	96.0%	588	3.0	399	2.0	B	96.8%
741	3.8	503	2.6	C	92.3%	717	3.6	487	2.5	C	93.4%
875	4.4	594	3.0	C	89.0%	881	4.5	598	3.0	C	80.9%
1037	5.3	704	3.6	D	73.5%	1018	5.2	691	3.5	D	61.5%
1158	5.9	786	4.0	D	55.3%	1159	5.9	787	4.0	D	48.2%
1314	6.7	892	4.5	D	44.2%	1311	6.7	890	4.5	D	36.1%
1446	7.3	982	5.0	D	37.5%	1449	7.4	984	5.0	D	27.1%

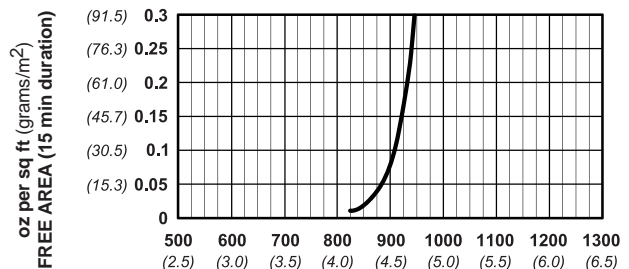
Intake Discharge Loss Coefficient Class = 4
 Ratings include the effect of a drain pan.



American Warming & Ventilating certifies that the model LE-73 louver shown herein is licensed to bear the AMCA Seal. The ratings shown are based on tests and procedures performed in accordance with AMCA Publication 511 and comply with the requirements of the AMCA Certified Ratings Program. The AMCA Certified Ratings Seal applies to air performance, water penetration, and wind driven rain ratings.

LE-73

WATER PENETRATION



VELOCITY THROUGH FREE AREA fpm (m/s)

Both maximum recommended free area velocity and beginning of water penetration are 834 fpm at standard air - .075 lbs per cu ft. The above water penetration data is based on mill finish, 48" x 48" test size per AMCA Standard 511.