

BCS
series



SINGLE INLET CENTRIFUGAL FAN Backward Incline - BCS



GTG Industries Sdn Bhd certifies that the model: BCS shown herein is licensed to bear the AMCA Seal.

The ratings are based on tests and procedures performed in accordance with AMCA Publication 211 and AMCA Publication 311 and comply with the requirements of the AMCA Certified Ratings Program.



BCS Series

- ◆ Compact in size for easy installation and maintenance
- ◆ Range : 315, 355, 400, 450, 500, 560, 630, 710, 800, 900, 1000, 1120, 1250
- ◆ Various orientations and mounting configurations available
- ◆ Low noise and high efficiency

Introduction

BCS Series fan with backward incline blade couple with single inlet housing provides large air volume at high static pressure with **non-overloading characteristic performance** i.e. the required power does not exceed a certain value with the increase of air volume. With this perfect **limit load** characteristics together with welded casing and drain hole, the BCS is ideal choice for kitchen exhaust and also suitable for other various ventilation system in large commercial and industrial buildings, warehouses, plants etc.

Non-convertible is GTG standard model, where the direction of rotation is fixed upon customer confirmation.

Convertible type is GTG optional model offering where the customer can reconfigure the unit to CW90 ↔ CW270 ↔ CW360, CCW90 ↔ CCW270 ↔ CCW360.



Fan Casing

- Material : Steel with 2 layers of anti corrosion paint
- c/w outlet flanges
- Compact and light weight



Impeller

- Backward curve blade, SISW (single inlet single width)
- Material : Steel
- High efficiency and low noise



Drain hole c/w Plug

- For drainage purpose



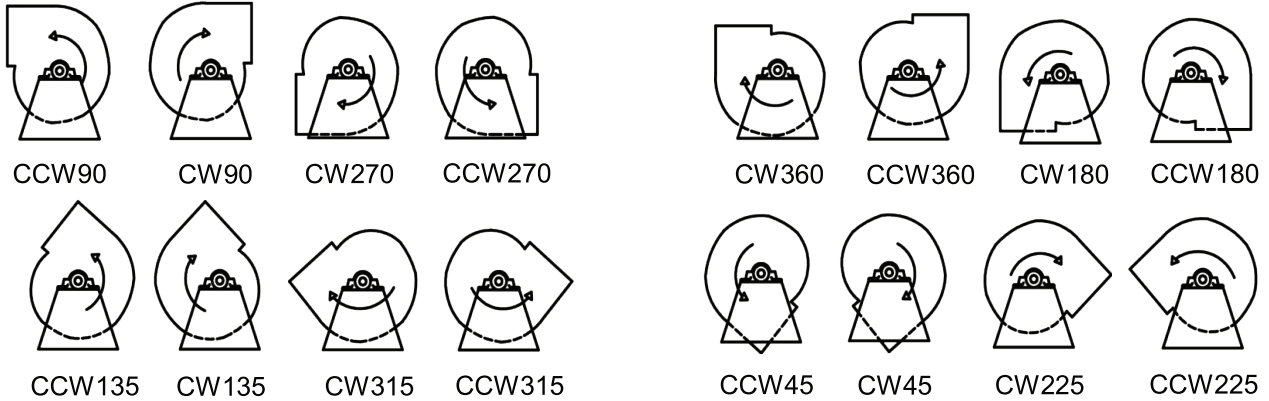
Access Door

- Easy access for cleaning and maintenance

Direction of Rotation and Discharge

This is accordance with AMCA Standard 99-2406-03

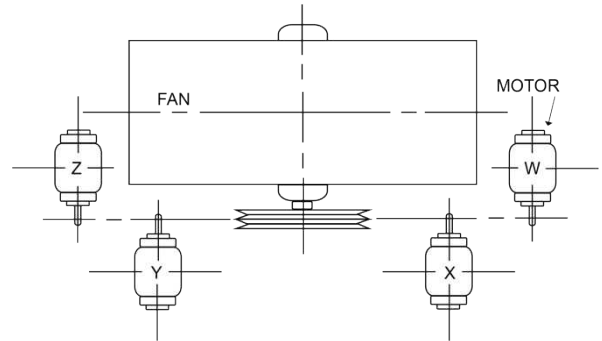
Direction of rotation is determined from the drive side. On single inlet fans, drive side is considered as opposite inlet, regardless of actual drive location.



Standard Motor Positions

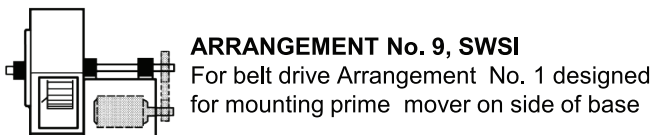
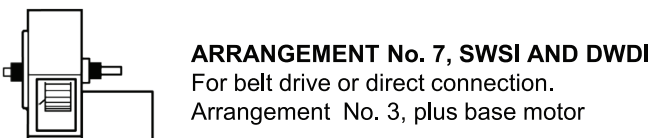
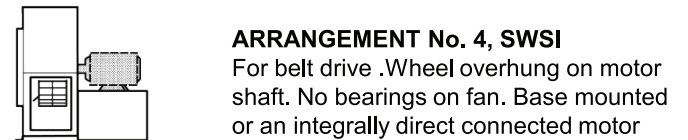
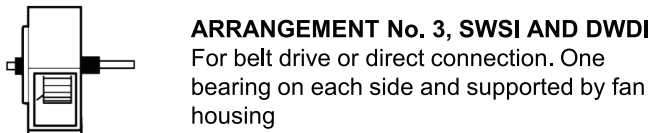
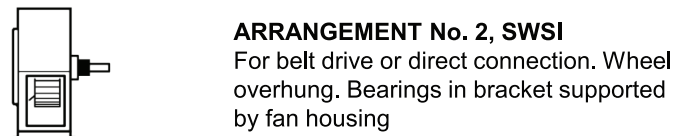
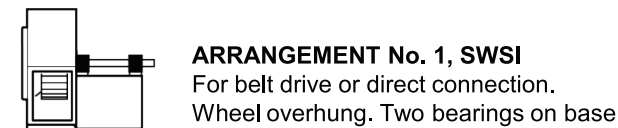
This is accordance with AMCA Standard 99-2407-03

The location of motor is determined from plan view of the blower, designating the motor position by letters W, X, Y and Z as the case may be.



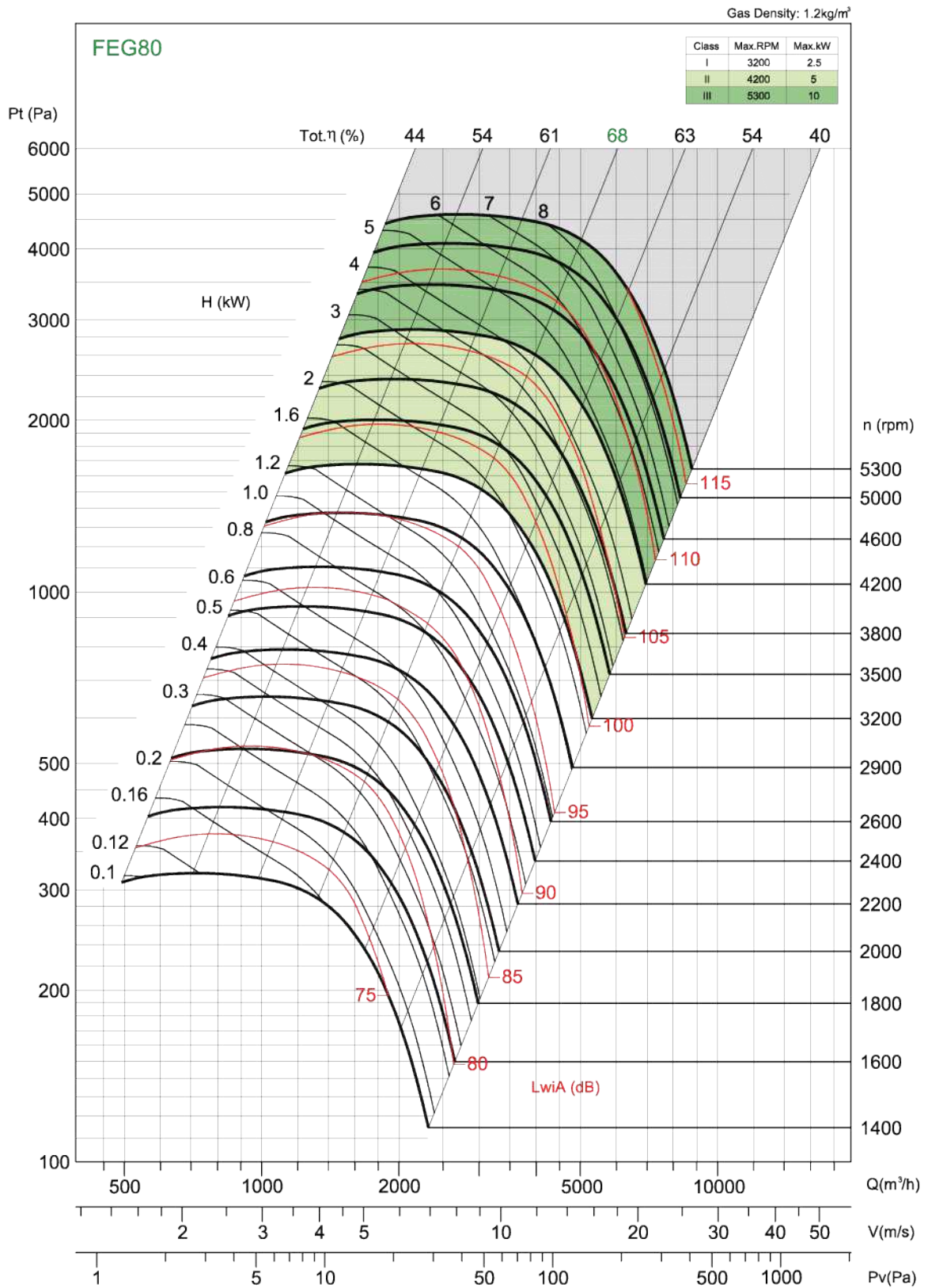
Arrangements of Drive

This is accordance with AMCA Standard 99-2404-03



Performance Curve

BCS 315

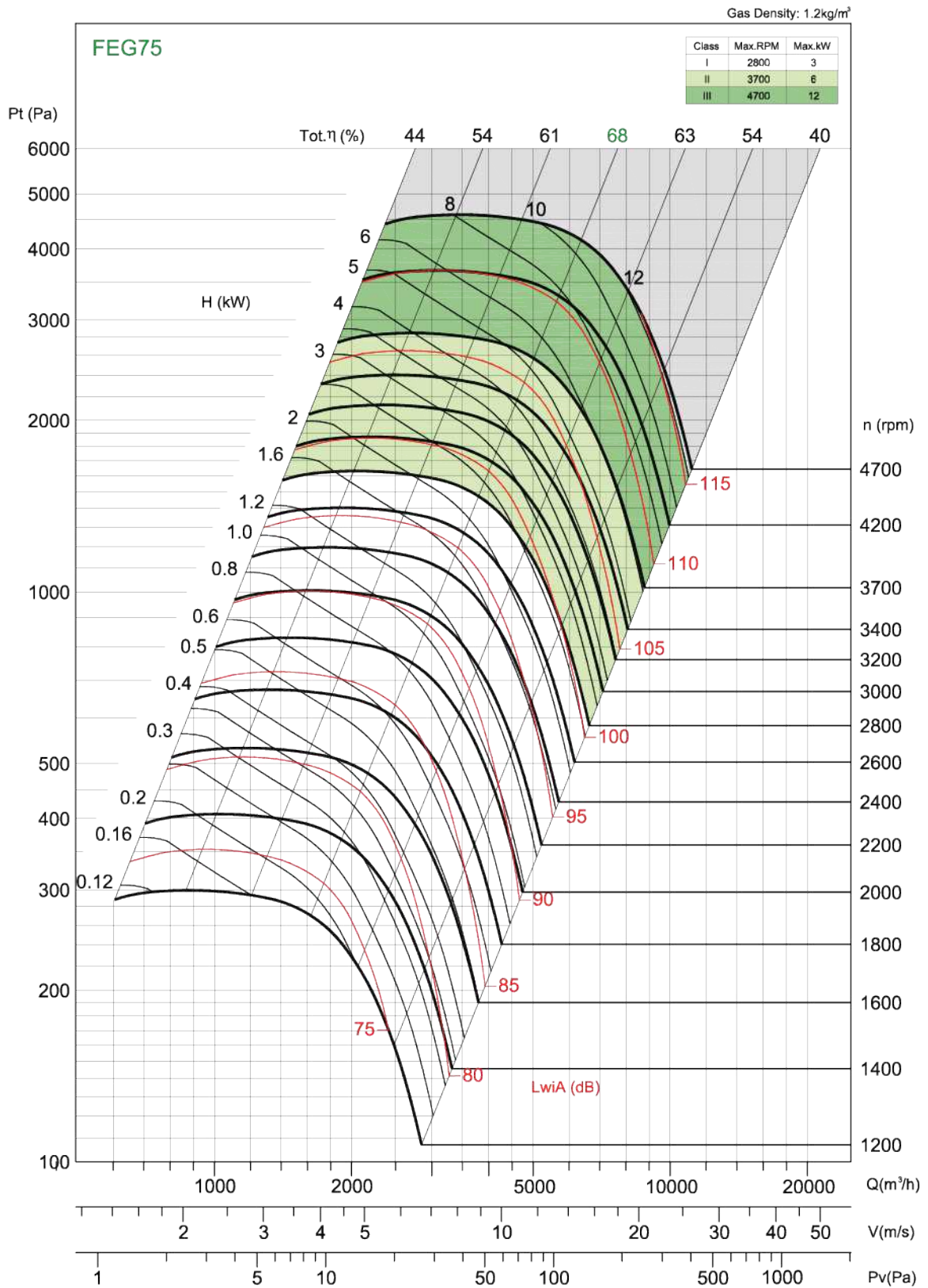


Performance certified is for installation type B - Free inlet, Ducted outlet. Power rating (kW) does not include transmission losses. Performance ratings do not include the effects of appurtenances (accessories). The A-weighted sound ratings shown have been calculated per AMCA International Standard 301. Values shown are for inlet LwiA sound power levels for installation Type B: free inlet, ducted outlet.



Performance Curve

BCS 355

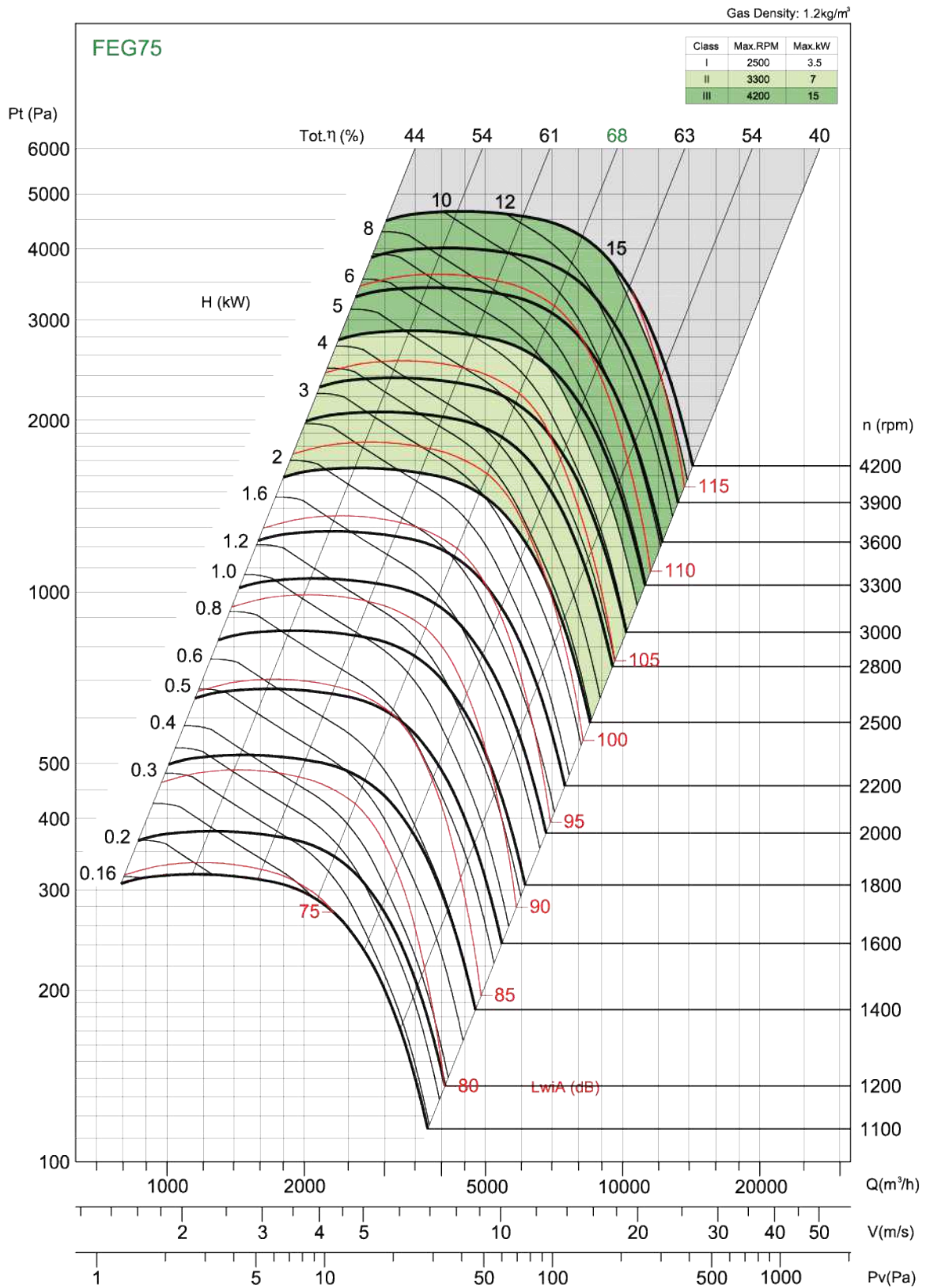


Performance certified is for installation type B - Free inlet, Ducted outlet. Power rating (kW) does not include transmission losses. Performance ratings do not include the effects of appurtenances (accessories). The A-weighted sound ratings shown have been calculated per AMCA International Standard 301. Values shown are for inlet LwiA sound power levels for installation Type B: free inlet, ducted outlet.



Performance Curve

BCS 400

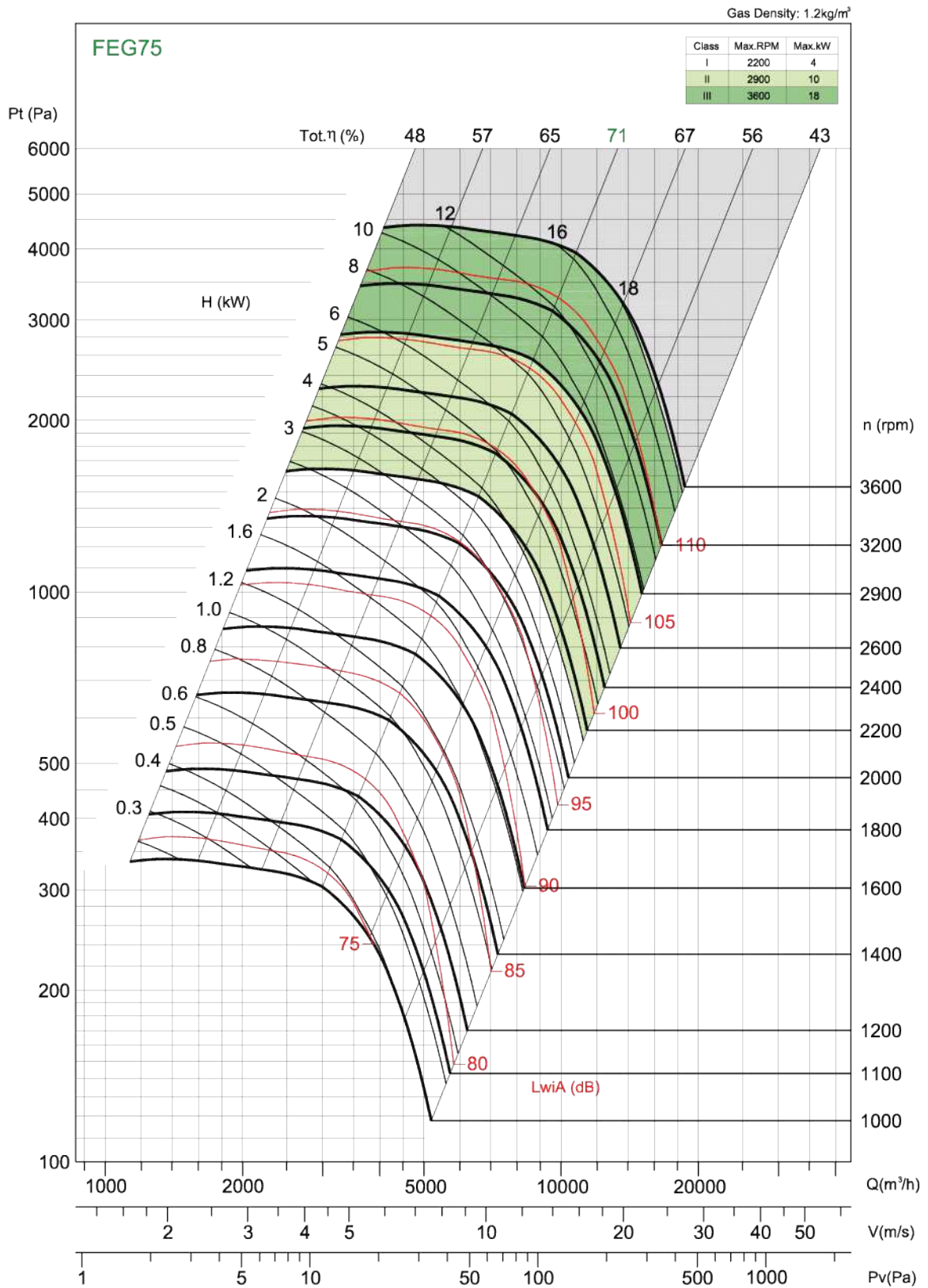


Performance certified is for installation type B - Free inlet, Ducted outlet. Power rating (kW) does not include transmission losses. Performance ratings do not include the effects of appurtenances (accessories). The A-weighted sound ratings shown have been calculated per AMCA International Standard 301. Values shown are for inlet LwA sound power levels for installation Type B: free inlet, ducted outlet.



Performance Curve

BCS 450

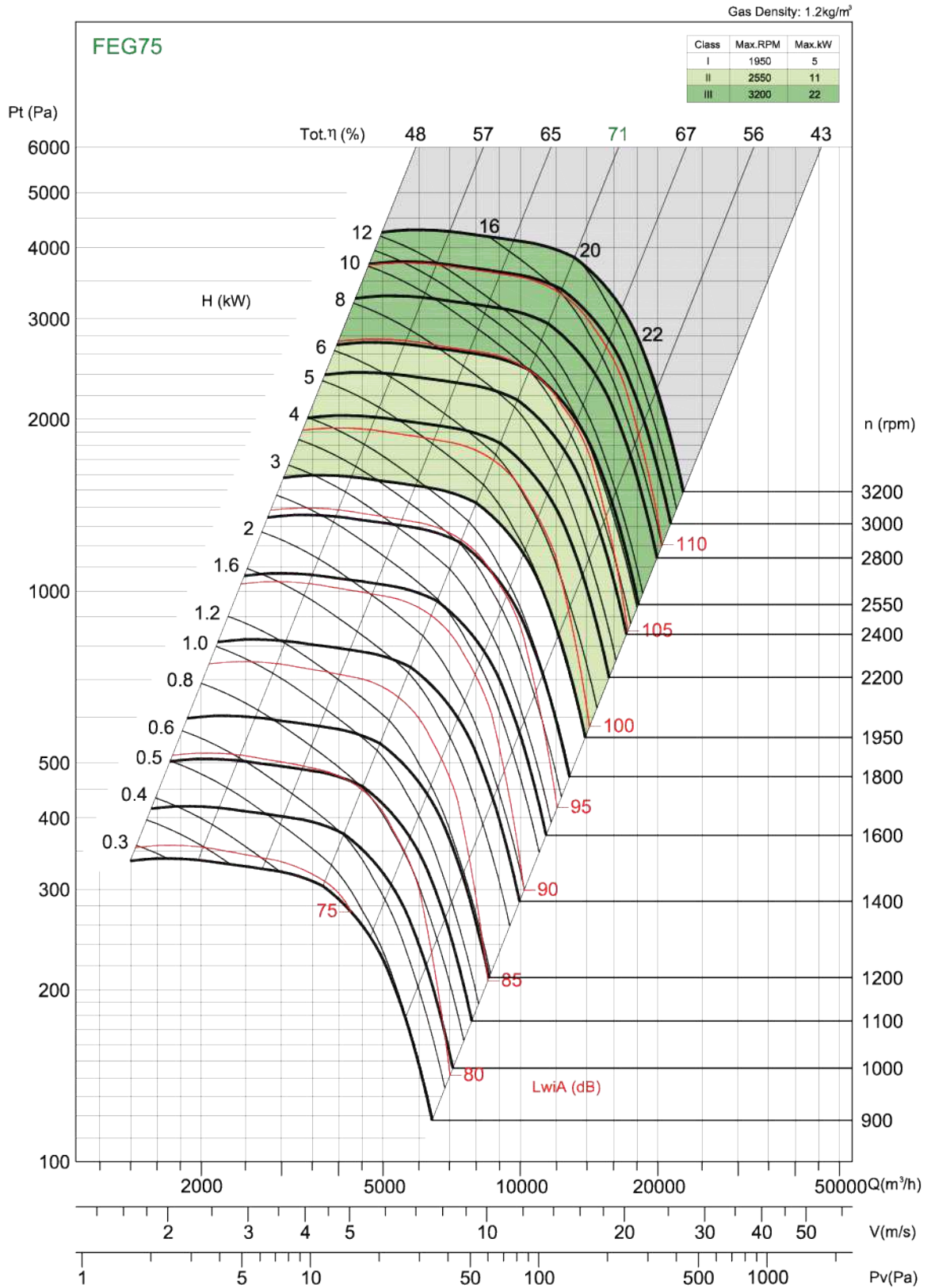


Performance certified is for installation type B - Free inlet, Ducted outlet. Power rating (kW) does not include transmission losses. Performance ratings do not include the effects of appurtenances (accessories). The A-weighted sound ratings shown have been calculated per AMCA International Standard 301. Values shown are for inlet LwiA sound power levels for installation Type B: free inlet, ducted outlet.



Performance Curve

BCS 500

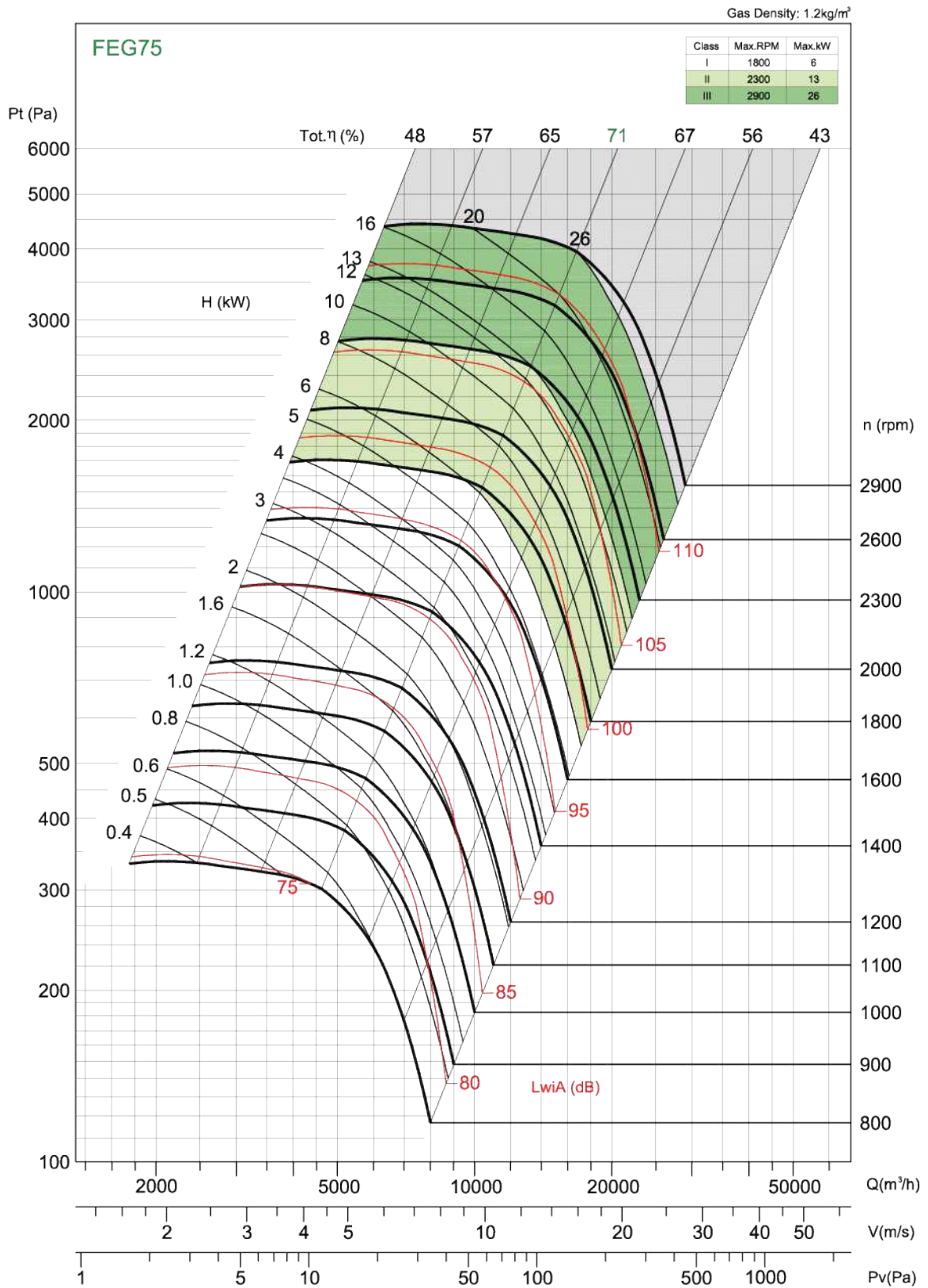


Performance certified is for installation type B - Free inlet, Ducted outlet. Power rating (kW) does not include transmission losses. Performance ratings do not include the effects of appurtenances (accessories). The A-weighted sound ratings shown have been calculated per AMCA International Standard 301. Values shown are for inlet LwiA sound power levels for installation Type B: free inlet, ducted outlet.



Performance Curve

BCS 560

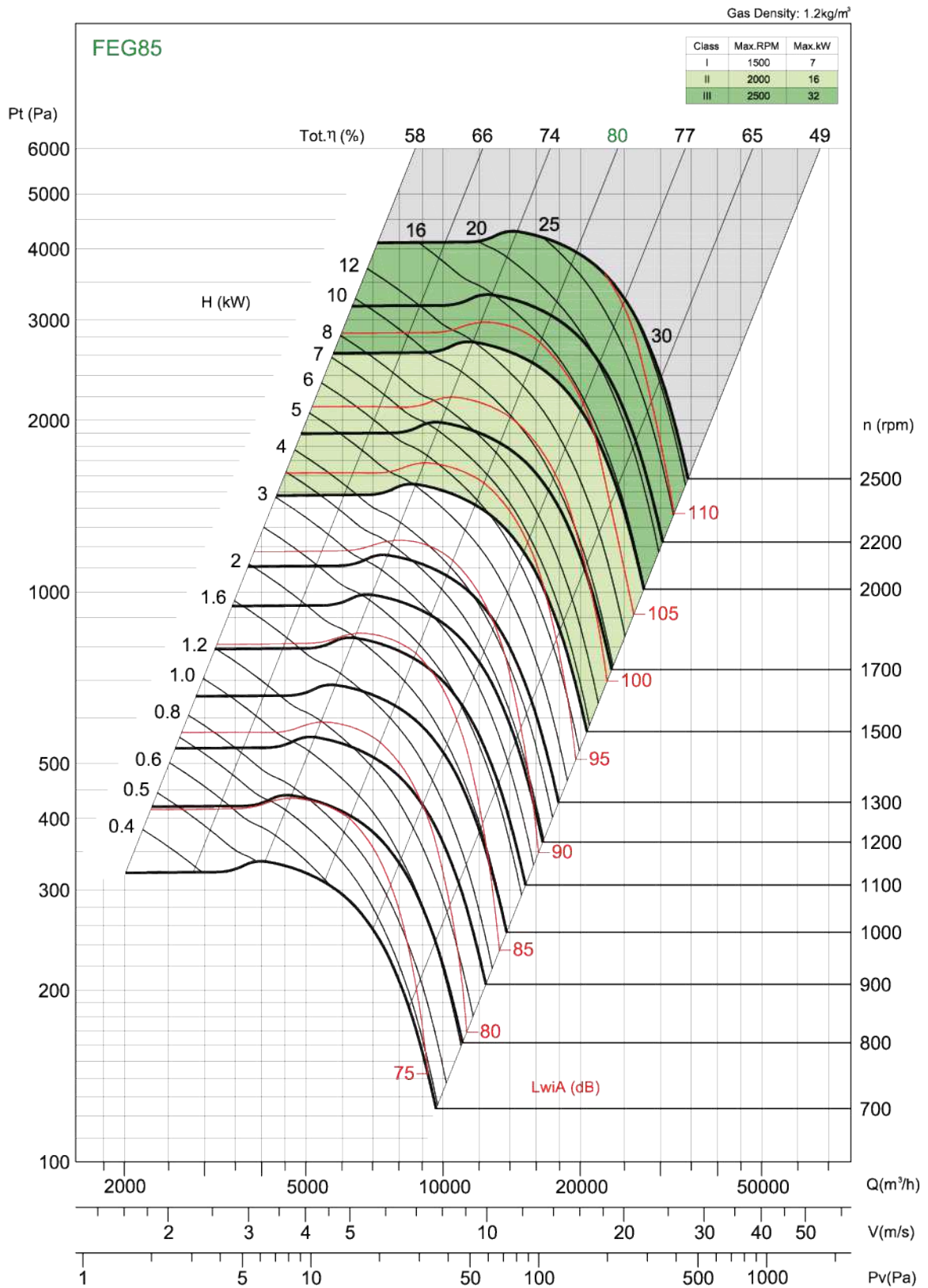


Performance certified is for installation type B - Free inlet, Ducted outlet. Power rating (kW) does not include transmission losses. Performance ratings do not include the effects of appurtenances (accessories). The A-weighted sound ratings shown have been calculated per AMCA International Standard 301. Values shown are for inlet LwiA sound power levels for installation Type B: free inlet, ducted outlet.



Performance Curve

BCS 630

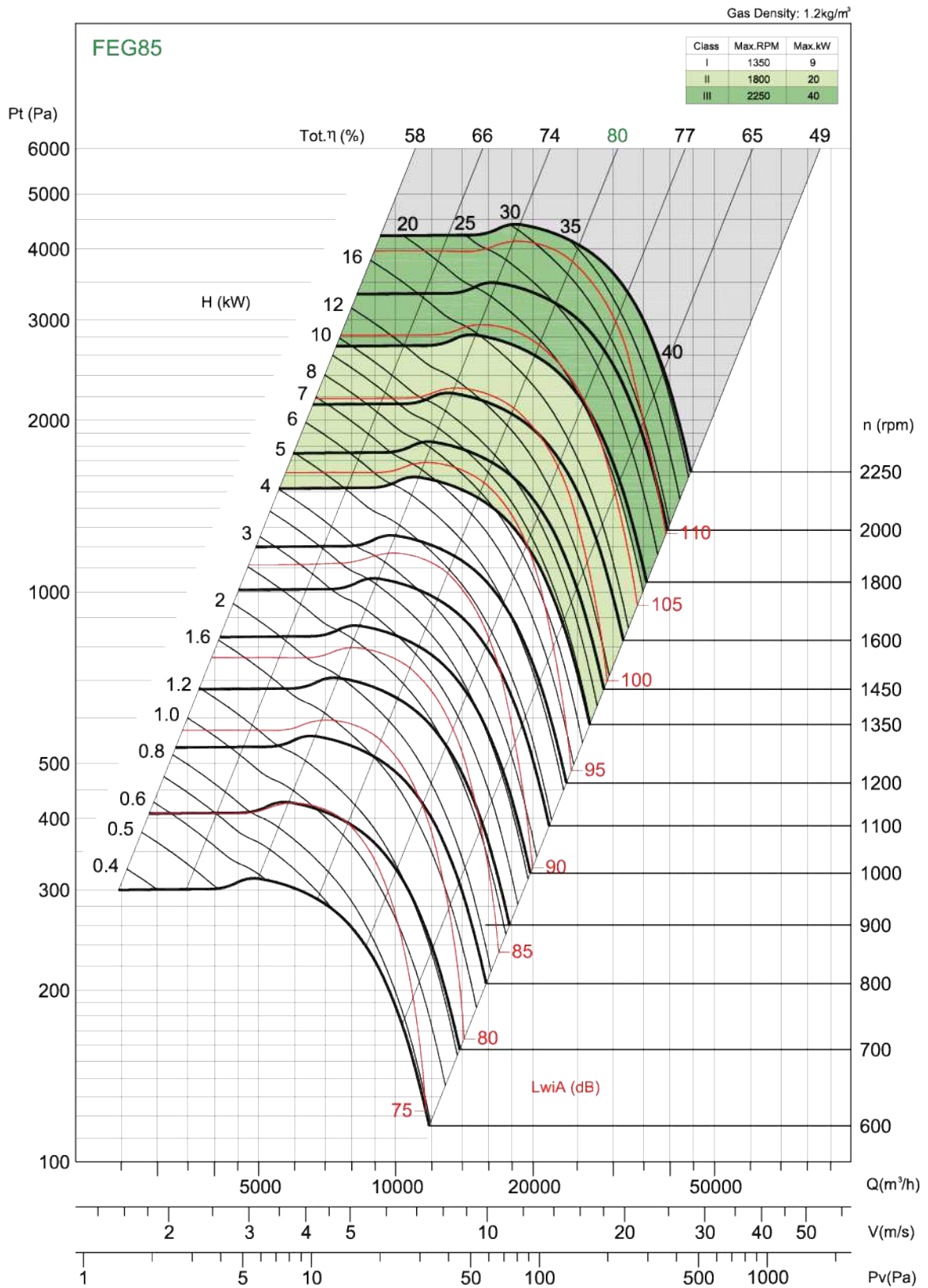


Performance certified is for installation type B - Free inlet, Ducted outlet. Power rating (kW) does not include transmission losses. Performance ratings do not include the effects of appurtenances (accessories). The A-weighted sound ratings shown have been calculated per AMCA International Standard 301. Values shown are for inlet LwiA sound power levels for installation Type B: free inlet, ducted outlet.



Performance Curve

BCS 710

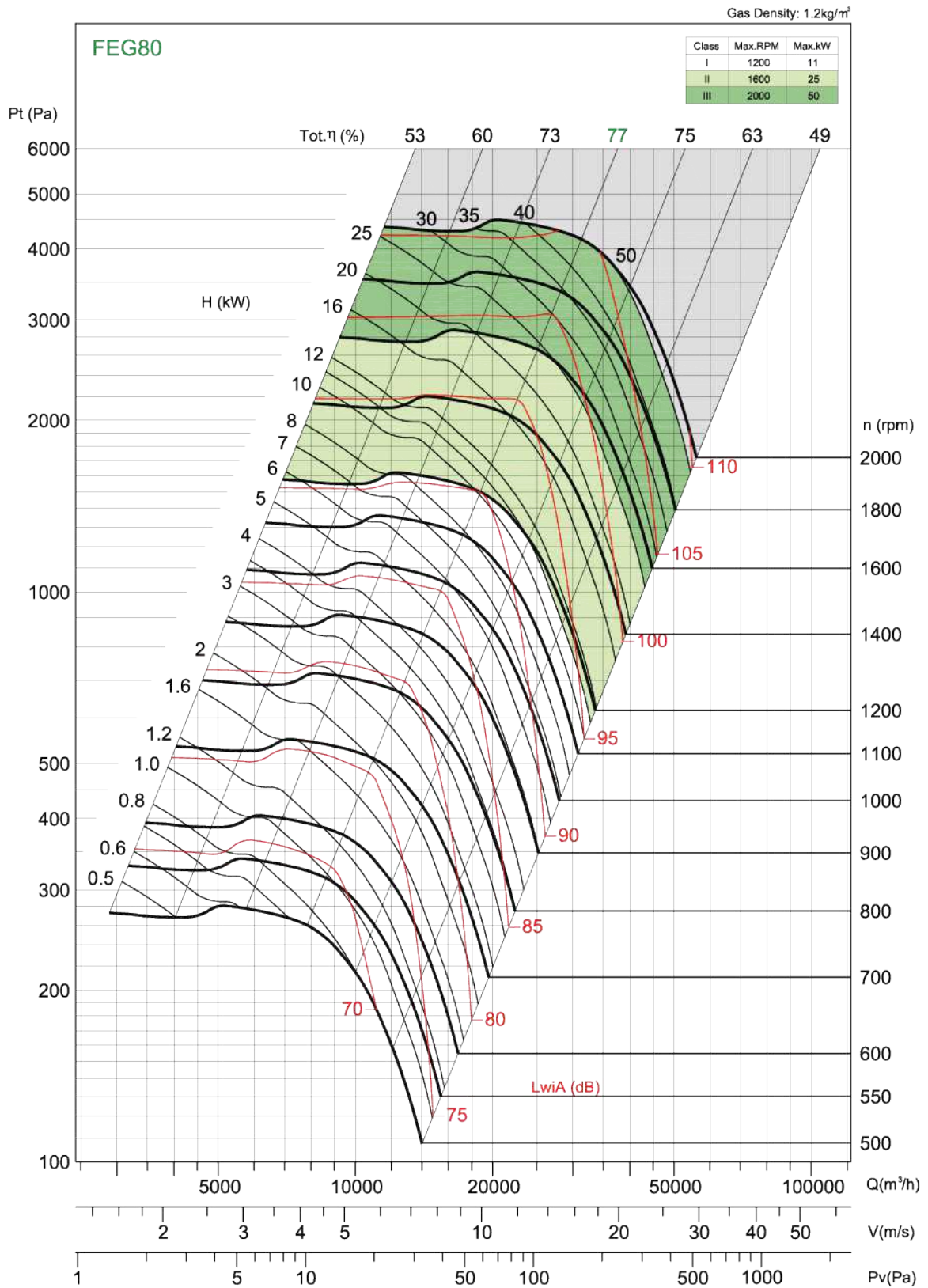


Performance certified is for installation type B - Free inlet, Ducted outlet. Power rating (kW) does not include transmission losses. Performance ratings do not include the effects of appurtenances (accessories). The A-weighted sound ratings shown have been calculated per AMCA International Standard 301. Values shown are for inlet LwiA sound power levels for installation Type B: free inlet, ducted outlet.



Performance Curve

BCS 800

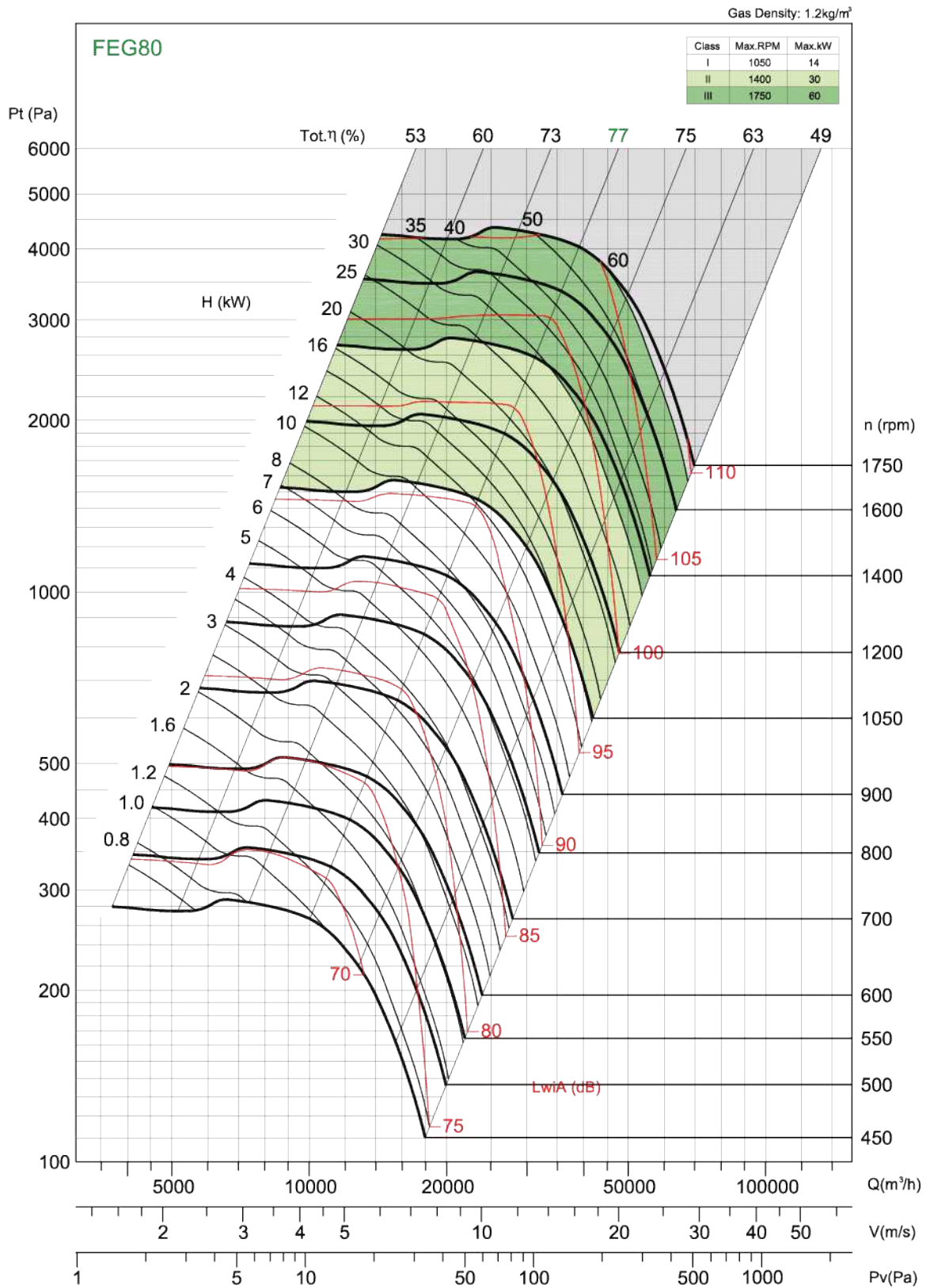


Performance certified is for installation type B - Free inlet, Ducted outlet. Power rating (kW) does not include transmission losses. Performance ratings do not include the effects of appurtenances (accessories). The A-weighted sound ratings shown have been calculated per AMCA International Standard 301. Values shown are for inlet LwiA sound power levels for installation Type B: free inlet, ducted outlet.



Performance Curve

BCS 900

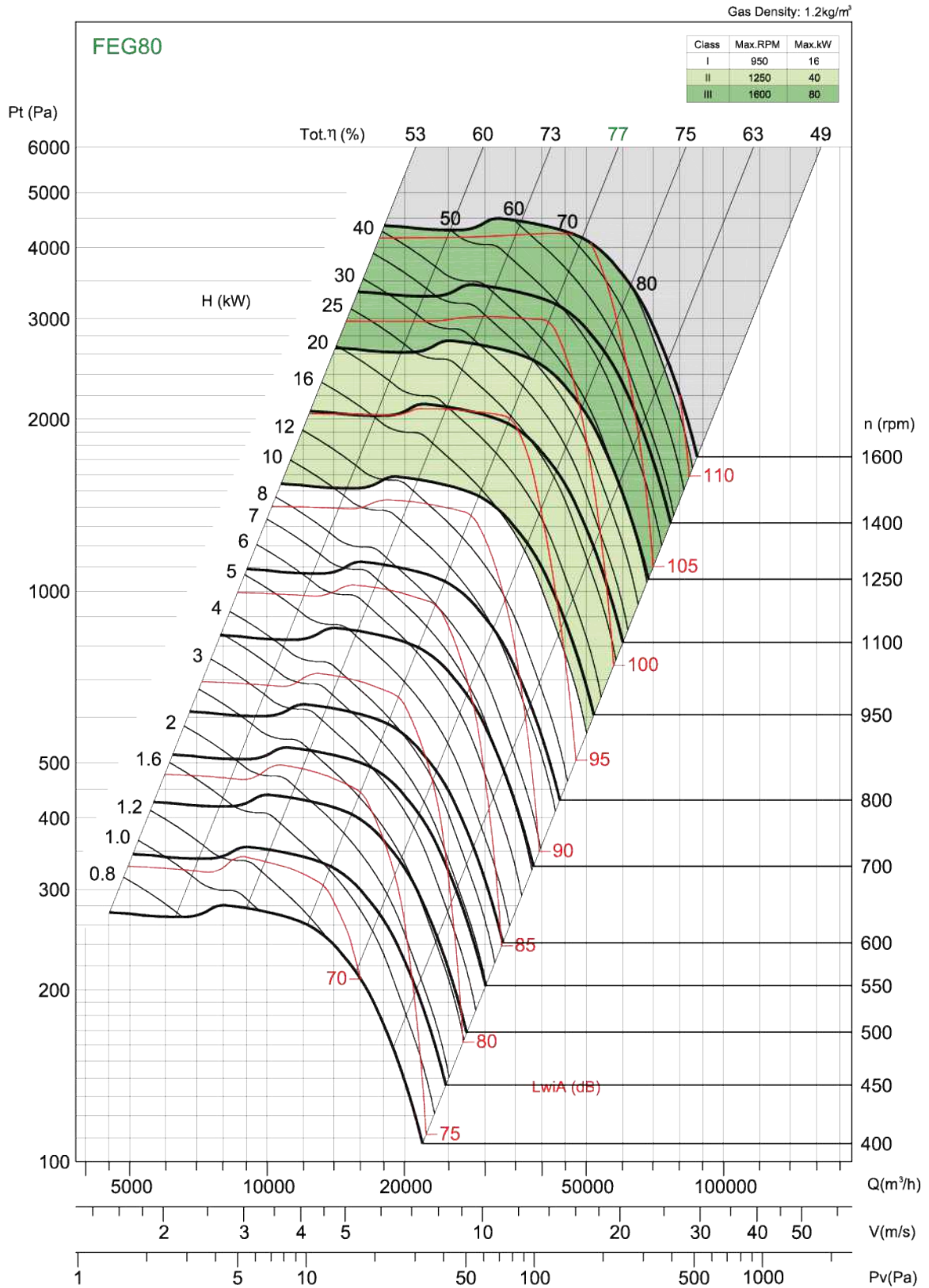


Performance certified is for installation type B - Free inlet, Ducted outlet. Power rating (kW) does not include transmission losses. Performance ratings do not include the effects of appurtenances (accessories). The A-weighted sound ratings shown have been calculated per AMCA International Standard 301. Values shown are for inlet LwA sound power levels for installation Type B: free inlet, ducted outlet.



Performance Curve

BCS 1000

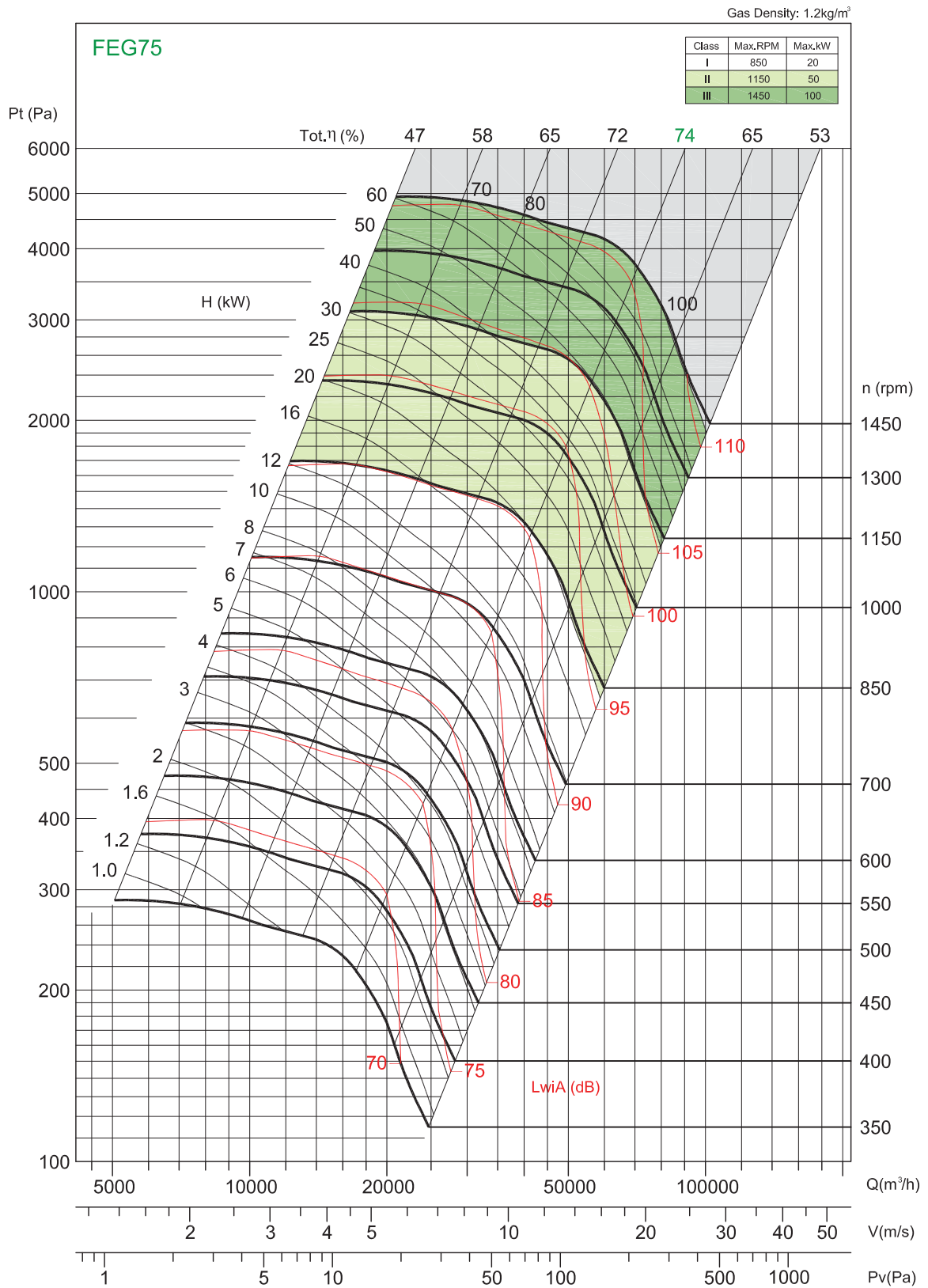


Performance certified is for installation type B - Free inlet, Ducted outlet. Power rating (kW) does not include transmission losses. Performance ratings do not include the effects of appurtenances (accessories). The A-weighted sound ratings shown have been calculated per AMCA International Standard 301. Values shown are for inlet LwA sound power levels for installation Type B: free inlet, ducted outlet.



Performance Curve

BCS 1120

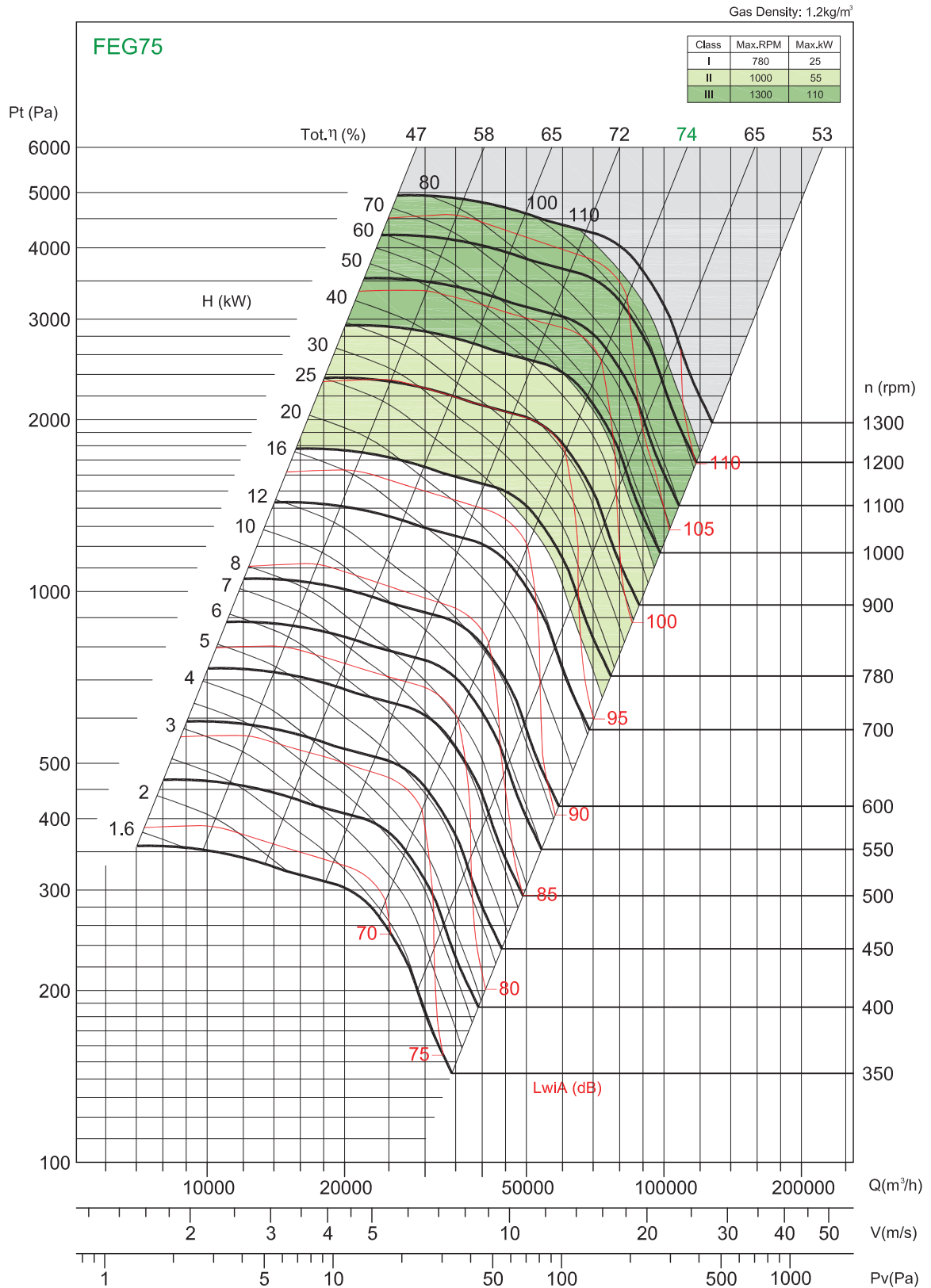


Performance certified is for installation type B - Free inlet, Ducted outlet. Power rating (kW) does not include transmission losses. Performance ratings do not include the effects of appurtenances (accessories). The A-weighted sound ratings shown have been calculated per AMCA International Standard 301. Values shown are for inlet LwiA sound power levels for installation Type B: free inlet, ducted outlet.



Performance Curve

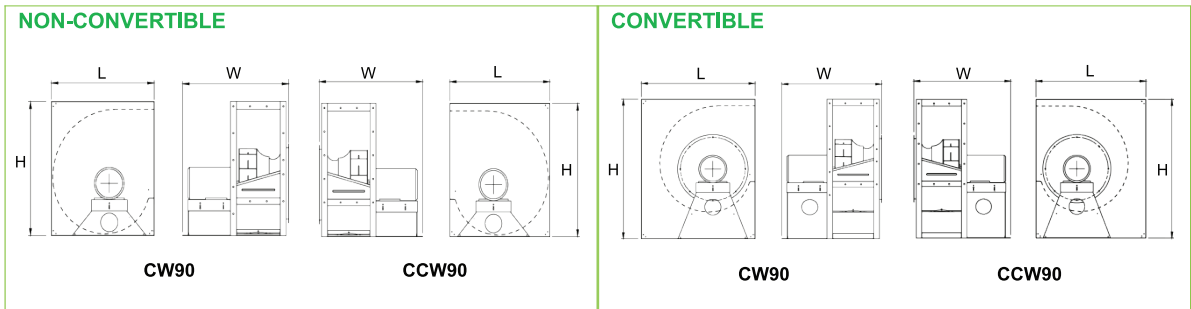
BCS 1250



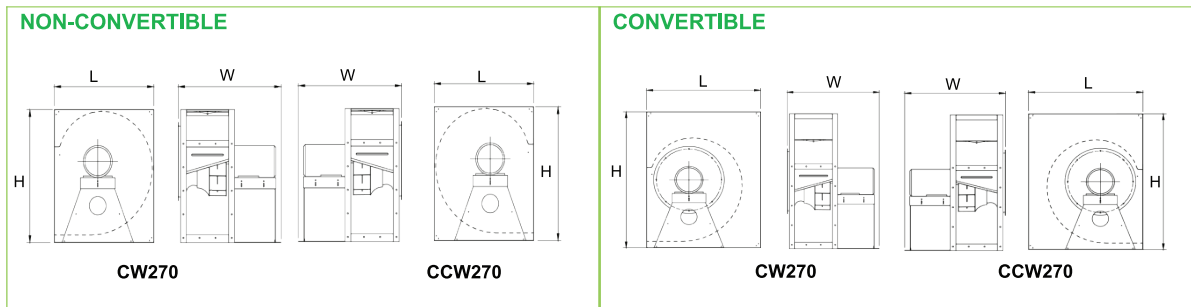
Performance certified is for installation type B - Free inlet, Ducted outlet. Power rating (kW) does not include transmission losses. Performance ratings do not include the effects of appurtenances (accessories). The A-weighted sound ratings shown have been calculated per AMCA International Standard 301. Values shown are for inlet LwiA sound power levels for installation Type B: free inlet, ducted outlet.



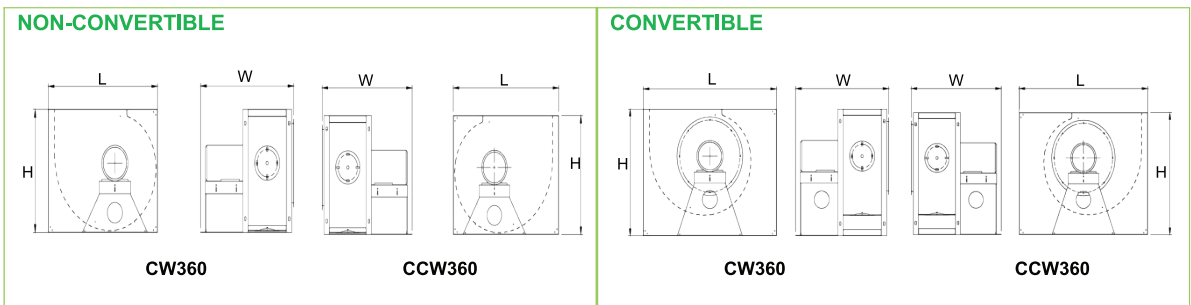
Dimension (mm)



MODEL	L	H	W	L	H	W
BCS-A 315	522	634	669	632	792	669
BCS-A 355	582	706	700	699	878	700
BCS-A 400	650	786	807	778	976	807
BCS-A 450	729	879	948	865	1085	948
BCS-A 500	801	969	1038	947	1189	1038
BCS-A 560	893	1079	947	1050	1319	947
BCS-A 630	999	1206	1002	1170	1472	1002
BCS-A 710	1121	1350	1130	1306	1644	1130



MODEL	L	H	W	L	H	W
BCS-A 315	522	634	669	632	792	669
BCS-A 355	582	706	700	699	878	700
BCS-A 400	650	786	807	778	976	807
BCS-A 450	729	879	948	865	1085	948
BCS-A 500	801	969	1038	947	1189	1038
BCS-A 560	893	1079	947	1050	1319	947
BCS-A 630	999	1206	1002	1170	1472	1002
BCS-A 710	1121	1350	1130	1306	1644	1130



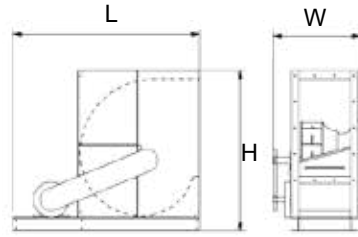
MODEL	L	H	W	L	H	W
BCS-A 315	634	522	669	792	632	669
BCS-A 355	706	582	700	878	699	700
BCS-A 400	786	650	807	976	778	807
BCS-A 450	879	729	948	1085	865	948
BCS-A 500	969	801	1038	1189	947	1038
BCS-A 560	1079	893	947	1319	1050	947
BCS-A 630	1206	999	1002	1472	1170	1002
BCS-A 710	1350	1121	1130	1644	1306	1130

* The actual dimension is subject to changes without prior notice, kindly refer to GTG Technical Submittal for further details

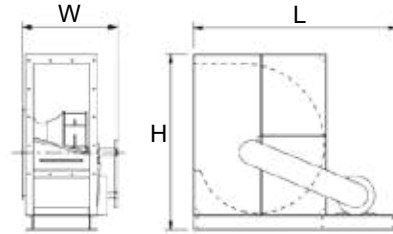
Dimension (mm)

BCS - CW90 & CCW90

Model	L	H	W	Max. Motor Frame Size
BCS 315	935	710	414	100L
BCS 355	959	782	457	100L
BCS 400	1121	862	489	132S
BCS 450	1224	955	549	160M
BCS 500	1354	1045	599	160L
BCS 560	1371	1179	670	132S
BCS 630	1515	1306	685	132M
BCS 710	1686	1450	758	160M
BCS 800	1888	1607	813	200L
BCS 900	2072	1785	895	225S
BCS 1000	2224	1946	986	225S
BCS 1120	2443	2235	1158	250M
BCS 1250	2625	2483	1248	250M



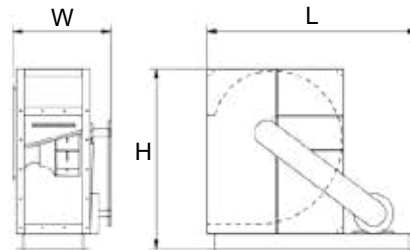
CW90



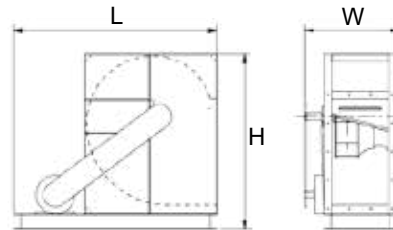
CCW90

BCS - CW270 & CCW270

Model	L	H	W	Max. Motor Frame Size
BCS 315	935	710	414	100L
BCS 355	959	782	457	100L
BCS 400	1121	862	489	132S
BCS 450	1224	955	549	160M
BCS 500	1354	1045	599	160L
BCS 560	1371	1179	670	132S
BCS 630	1515	1306	685	132M
BCS 710	1686	1450	758	160M
BCS 800	1888	1569	813	200L
BCS 900	2072	1747	895	225S
BCS 1000	2224	1908	986	225S
BCS 1120	2443	2172	1158	250M
BCS 1250	2625	2420	1248	250M



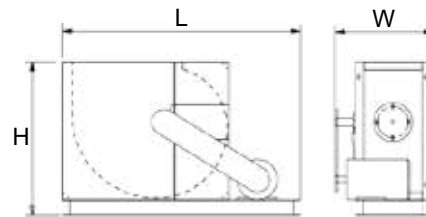
CW270



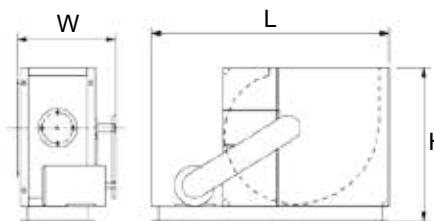
CCW270

BCS - CW360 & CCW360

Model	L	H	W	Max. Motor Frame Size
BCS 315	1045	598	414	100L
BCS 355	1088	658	457	100L
BCS 400	1269	726	489	132S
BCS 450	1421	805	549	160M
BCS 500	1497	877	599	160L
BCS 560	1541	993	670	132S
BCS 630	1717	1099	685	132M
BCS 710	1924	1221	758	160M
BCS 800	2155	1352	813	200L
BCS 900	2384	1505	895	225S
BCS 1000	2479	1640	986	225S
BCS 1120	2798	2235	1158	250M
BCS 1250	3061	2483	1248	250M



CW360



CCW360

* The actual dimension is subject to changes without prior notice, kindly refer to GTG Technical Submittal for further details

GTG Industries Sdn Bhd

No.13, Jalan Astaka U8/88B
 Seksyen U8, Bukit Jelutong
 40150 Shah Alam, Selangor.
 TEL +603- 78590213 FAX+603-74918138
 EMAIL inquiry@gtg.com.my WEBSITE www.gtg.com.my



SCAN & VISIT OUR WEBSITE

