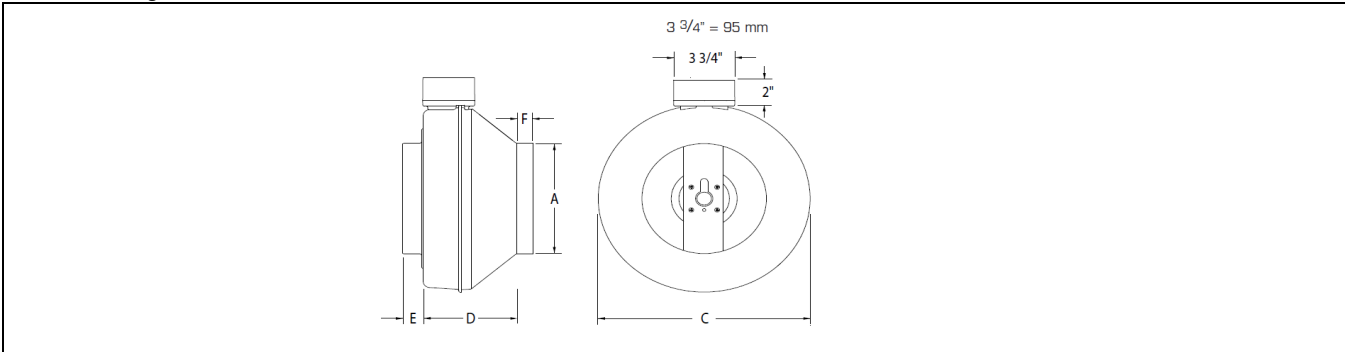


# K EC SERIES

INLINE DUCT FAN



## Dimensional Diagram:



## Dimensional Table:

Model	A	C	D	E	F
K 100 EC KC 100 EC	4	8-1/2	6-1/2	1	1
K 150M EC KC 150M EC	6	13-1/8	6-5/8	1	1
K 200 EC KC 200 EC	8	13-3/8	6	1-1/8	1-1/8
K 250 EC KC 250 EC	10	13-3/8	4-11/16	1-1/8	1
K 300 EC KC 300 EC	12	16	8-1/4	1-1/16	1-3/16
K 300L EC KC 300L EC	12	16	8-1/4	1-1/16	1-3/16

Dimensions are in inches

NOTE: Corded models are designated as K immediately followed by the identifier 'C'.

## Performance Data:

## Certified Data

Model Name	Energy Star	Rated Power W	Voltage/p hase V/~	Max Amp A	RPM min <sup>-1</sup>	CFM							Max Ps (Inch W.C.)	Item #
						0.0"Ps	0.2"Ps	0.4"Ps	0.6"Ps	0.8"Ps	1.0"Ps	1.5"Ps		
K 100 EC	YES	35	120 / 1	0.6	4100	180	166	152	135	117	97	49	1.92	79397
K 150M EC	YES	78	120 / 1	1.32	2480	363	330	302	271	239	206	113	1.92	47546
K 200 EC	YES	76	120 / 1	1.32	2545	428	390	353	314	275	239	121	1.95	47547
K 250 EC	YES	91	120 / 1	1.32	2380	513	460	413	363	325	283	160	2.13	47548
K 300 EC	YES	141	120 / 1	2.1	2665	633	600	577	542	506	467	379	2.45	47549
K 300L EC	YES	170	120 / 1	2.1	2510	805	750	686	615	537	474	315	1.96	47550

NOTE: Corded models are designated as K immediately followed by the identifier 'C'.

Performance certified is for installation type D: Ducted inlet, Ducted outlet.

Speed (RPM) shown is nominal. Performance is based on actual speed of test.

Performance ratings do not include the effects of appurtenances (accessories).

## Certifications:



Systemair Mfg. Inc. certifies that the K EC series shown herein is licensed to bear the AMCA seal. The ratings shown are based on tests and procedures performed in accordance with AMCA Publication 211 and comply with the requirements of the AMCA Certified Ratings Program.

Catalog series: K EC

Revision date: October 2019