



CENTREX REX JR.

Model: REXJR
Direct Drive Centrifugal
Inline Fans

MOVING YOUR WAY

CERTIFIED RATINGS

Centrex REX JR. Centrifugal Inline Fans



PennBarry certifies that the Centrex REX JR. Centrifugal Inline Fan models shown herein are licensed to bear the AMCA seal. The ratings shown are based on tests and procedures performed in accordance with AMCA Publication 211 and AMCA Publication 311 and comply with the requirements of the AMCA Certified Ratings Program.

UL and CSA Certification

Centrex REX JR. Centrifugal Inline Fans carry the UL label, UL 705 (ZACT), listed under File #E28413. Check Underwriters Laboratories Re-Examination Service for specific units listed.



Centrex REX JR. Centrifugal Inline Exhausters are also certified by the Canadian Standard Association (File #LR13309).



Table of Contents

| | |
|-------------------------------|---|
| Introduction | 1 |
| Features and Benefits | 2 |
| Options and Accessories | 2 |
| Direct Drive Fan Data | |
| Dimensional Data | 3 |
| Performance Data | 3 |
| Fan Curves | 4 |
| Sound Data | 5 |
| Sample Specifications | 6 |
| Limited Warranty | 7 |

Visit Our Web Site

Point your internet web browser to www.PennBarry.com for up-to-the-minute information including:

- On-line catalog
- List of nearest PennBarry representatives
- What's New
- HVAC "Hot Links"

FANSIZER®

PRODUCT SELECTION SOFTWARE

FanSizer software allows you to select the best centrifugal or axial unit for your application. Input CFM and static pressure, and FanSizer will make the optimum selection. It allows you to complete job schedules which you can store, modify and print in seconds. Features include: on-line help, on-screen product drawings and dimensions, and complete text specifications. In addition, you can convert job schedules to ASCII code for use with other programs like word processing.

FANCAD®

Library of CAD Drawings

FanCad is a library of drawings for use with computer-aided design (CAD) systems. FanCad's pre-drawn details can save hours of drafting time. Included are all popular PennBarry fans and related items.

FanSizer and FanCad are registered trademarks.

©2005 PennBarry™ All rights reserved.

Following publication of this catalog changes may have been made in standard equipment, options and the like that would not be included.

We reserve the right to make changes at any time, without notice, to models, specifications, options, availability, etc.

This bulletin illustrates the appearance of PennBarry products at the time of publication and we reserve the right to make changes in design and construction at anytime without notice. Your local sales representative is the best source for current information.

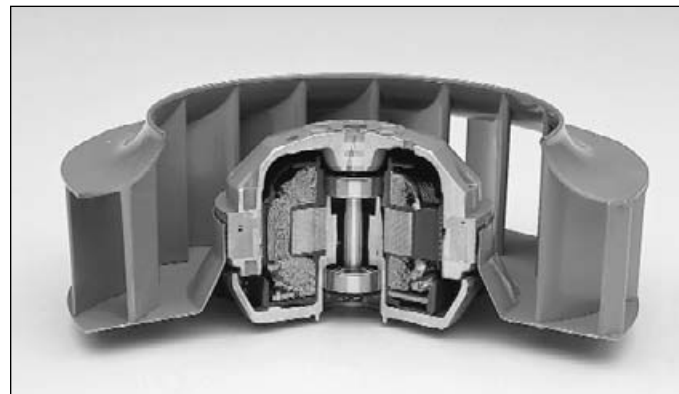
Features and Benefits

Centrex REX JR.

Centrex REX Jr. is a direct drive centrifugal inline fan designed for moderate ventilation requirements. Features include:

- True airfoil backward inclined wheel.
- Self-lubricating/sealed-for-life precision ball bearings.
- Automatic reset thermal overload protection.
- Capable of operation in air stream temperatures up to 140°F (60°C).
- Galvanized steel housing with electrostatically applied polyester/epoxy urethane powder coat finish.
- Terminal box with prewired electrical strip.
- External rotor motor, class B insulation.

Notes: This product is not warranted for corrosive applications. Mounting brackets are included with all Centrex Rex Jr. fans.



All REX Jr. fans are powered by an external rotor motorized impeller. This design provides excellent heat dissipation even at low rpm. All of the REX Jr. Series fans are speed controllable.

Options and Accessories

Lek-Trol™ Controllers

Lek-Trol™ speed controller, model LT 30, is available for all models. It can reduce the airflow rate by 60%.

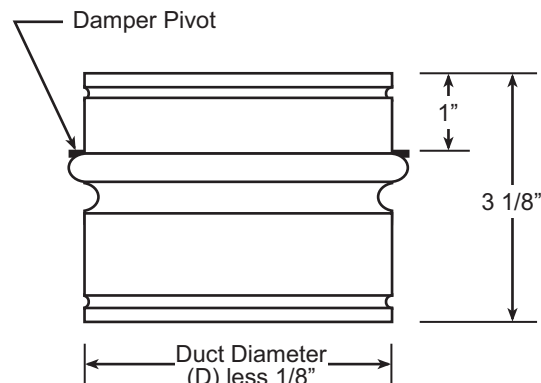
Back Draft Dampers

24 gauge galvanized casing with aluminum blades.

| Model No. | (D) |
|-----------|-----|
| REX04J | 4 |
| REX04JX | 4 |
| REX05J | 5 |
| REX05JX | 5 |
| REX06J | 6 |
| REX06JX | 6 |

| Model No. | (D) |
|-----------|-----|
| REX08J | 8 |
| REX08JX | 8 |
| REX10J | 10 |
| REX10JX | 10 |
| REX12J | 12¾ |

All dimensions are in inches.



All diameters are 1/8" less whole sizes.

Direct Drive Fan Data

Centrex REX JR.

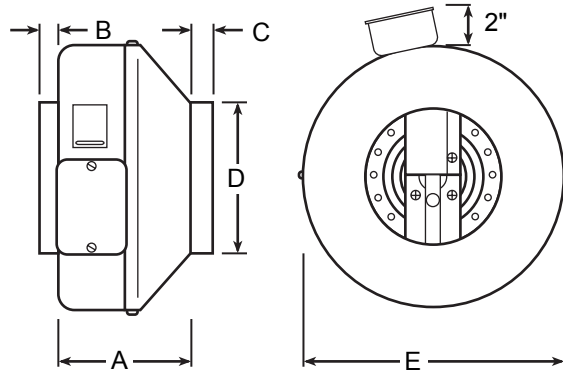
Fan Capacity - Cubic Feet Per Minute (CFM)

| Model | Max Watts | RPM | Tip Speed (RPM) | 0.000" SP | | 0.125" SP | | 0.250" SP | | 0.375" SP | | 0.500" SP | | 0.750" SP | | 1.000" SP | | 1.250" SP | | 1.500" SP | |
|---------|-----------|------|-----------------|-----------|-------|-----------|-------|-----------|-------|-----------|-------|-----------|-------|-----------|-------|-----------|-------|-----------|-------|-----------|-------|
| | | | | CFM | SONES | CFM | SONES | CFM | SONES | CFM | SONES | CFM | SONES | CFM | SONES | CFM | SONES | CFM | SONES | CFM | SONES |
| REX04J | 44 | 2950 | 4016 | 117 | 4.5 | 101 | 4.2 | 86 | 4.0 | 72 | 3.8 | 58 | 3.8 | | | | | | | | |
| REX04JX | 83 | 2800 | 5424 | 148 | 6.5 | 139 | 6.7 | 130 | 6.9 | 120 | 7.3 | 111 | 7.7 | 90 | 8.1 | 68 | 8.3 | 42 | 8.4 | | |
| REX05J | 42 | 2950 | 4016 | 132 | 4.8 | 115 | 4.3 | 98 | 4.1 | 81 | 4.0 | 65 | 3.9 | | | | | | | | |
| REX05JX | 87 | 2800 | 5424 | 191 | 6.8 | 175 | 6.9 | 161 | 7.0 | 146 | 7.3 | 131 | 7.7 | 102 | 8.5 | 75 | 8.6 | 45 | 8.7 | | |
| REX06J | 84 | 2680 | 5192 | 257 | 6.7 | 241 | 6.5 | 221 | 6.5 | 197 | 6.4 | 178 | 6.3 | 143 | 6.2 | 99 | 6.6 | 59 | 7.1 | | |
| REX06JX | 147 | 2930 | 6674 | 392 | 10.8 | 368 | 10.8 | 346 | 10.8 | 326 | 10.8 | 305 | 10.7 | 263 | 10.2 | 228 | 10.0 | 191 | 9.7 | 150 | 9.8 |
| REX08J | 119 | 2580 | 5876 | 481 | 9.1 | 444 | 8.4 | 403 | 7.7 | 361 | 7.3 | 319 | 7.1 | 237 | 7.3 | 177 | 7.6 | 130 | 8.0 | 76 | 8.6 |
| REX08JX | 152 | 2930 | 6674 | 521 | 11.4 | 496 | 10.9 | 469 | 10.5 | 440 | 10.0 | 411 | 9.7 | 345 | 9.3 | 282 | 9.8 | 231 | 10.2 | 180 | 10.6 |
| REX10J | 147 | 2930 | 6674 | 521 | 12.3 | 499 | 11.8 | 475 | 11.3 | 448 | 10.9 | 418 | 10.6 | 357 | 9.8 | 293 | 9.4 | 234 | 9.2 | 176 | 9.3 |
| REX10JX | 242 | 2460 | 6376 | 590 | 12.7 | 565 | 12.4 | 541 | 12.1 | 519 | 11.9 | 496 | 11.6 | 442 | 11.1 | 394 | 10.7 | 339 | 10.4 | 290 | 10.3 |
| REX12J | 196 | 2450 | 6350 | 711 | 11.5 | 675 | 10.4 | 627 | 9.5 | 576 | 8.8 | 521 | 7.3 | 382 | 6.1 | 284 | 7.2 | 220 | 8.0 | 166 | 8.8 |

Notes: Performance shown is for installation Type D – Ducted Inlet, Ducted Outlet. Speed (RPM) shown is nominal. Performance is based on actual speed of test. Performance ratings do not include the effects of appurtenances in the airstream.

The sound ratings shown are loudness values in fan sones at 5ft. (1.5m) from the test inlet duct in a hemispherical free field calculated per AMCA Standard 301. Values shown are for Installation Type D: Ducted Inlet, Ducted Outlet. Ratings do not include the effect of duct end correction.

Key Dimensions



| Model No. | A | B | C | D | E |
|-----------|-----|-----|-----|------|------|
| REX04J | 6 ½ | ⅞ | ⅞ | 4 | 8 |
| REX04JX | 6 | ⅞ | ¾ | 4 | 9 ½ |
| REX05J | 5 ½ | ⅞ | ⅞ | 5 | 8 |
| REX05JX | 4 ½ | ⅞ | 1 | 5 | 9 ½ |
| REX06J | 6 | 1 ¼ | ⅞ | 6 | 11 ½ |
| REX06JX | 6 | 1 ¼ | ⅞ | 6 | 13 ¼ |
| REX08J | 6 ¼ | 1 ¼ | ⅞ | 8 | 13 ¼ |
| REX08JX | 6 ¼ | 1 ¼ | ⅞ | 8 | 13 ¼ |
| REX10J | 5 ¼ | 1 ¼ | 1 | 10 | 13 ¼ |
| REX10JX | 5 ¼ | 1 ¼ | 1 | 10 | 13 ¼ |
| REX12J | 8 ¼ | 1 ¼ | 1 ¼ | 12 ¾ | 16 |

All dimensions are in inches.

Direct Drive Fan Data

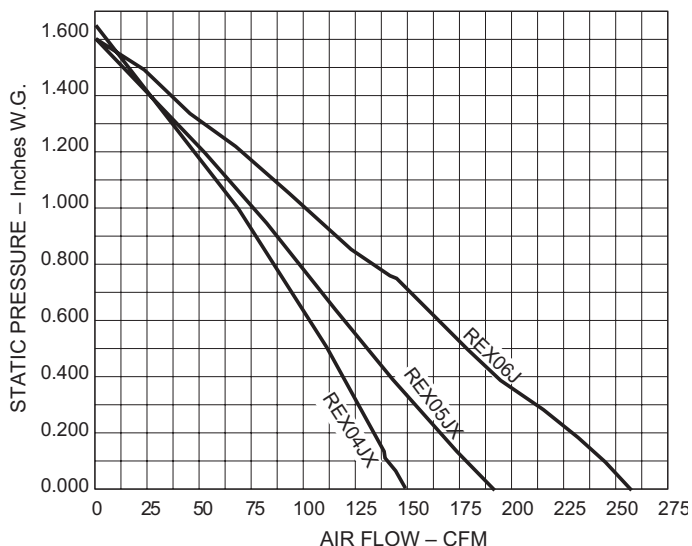
Centrex REX JR.

Fan Curves

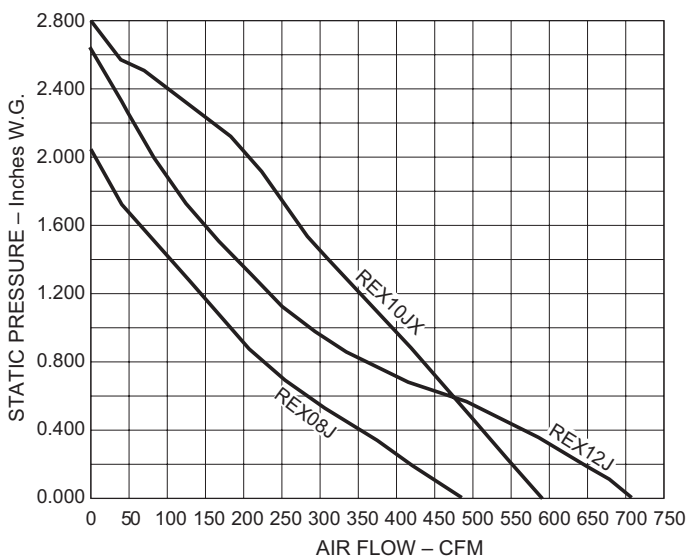
The fan curves illustrated here show the range of capacities available for direct drive units. Each graph shows the performance of several models at one particular nominal speed. Fan curves provide a quick method for selecting a fan unit based on design point requirements.

The direct drive performance chart on the previous page provides the tabular data (CFM and static pressure) used to plot the fan curves. In addition, tip speed and sones are tabulated. Since sound is normally an important factor in the selection of a fan, an engineer will usually want to select the “slowest” unit which meets CFM and SP requirements.

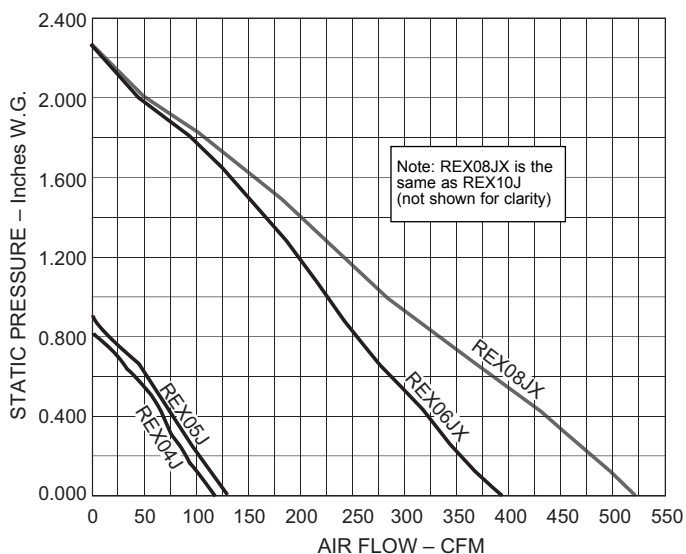
Nominal 2800 RPM



Nominal 2500 RPM



Nominal 2950 RPM



Sound Power Levels

| Model Number | CFM | Static Pressure | Nominal RPM | Sound Power Levels (dB re 10 ⁻¹² watts) Octave Band Center Frequency (Hz) | | | | | | | |
|--------------|-----|-----------------|-------------|---|-----|-----|-----|------|------|------|------|
| | | | | 63 | 125 | 250 | 500 | 1000 | 2000 | 4000 | 8000 |
| REX04J | 148 | 0.000 | 2800 | 55 | 62 | 67 | 64 | 62 | 56 | 51 | 43 |
| | 42 | 1.250 | 2800 | 58 | 58 | 66 | 62 | 69 | 59 | 55 | 52 |
| REX04JX | 148 | 0.000 | 2800 | 55 | 62 | 67 | 64 | 62 | 56 | 51 | 43 |
| | 42 | 1.250 | 2800 | 58 | 58 | 66 | 62 | 69 | 59 | 55 | 52 |
| REX05J | 132 | 0.000 | 2950 | 57 | 56 | 61 | 61 | 57 | 54 | 44 | 31 |
| | 98 | 0.250 | 2950 | 45 | 56 | 59 | 60 | 55 | 50 | 38 | 27 |
| | 65 | 0.500 | 2950 | 45 | 65 | 58 | 58 | 53 | 48 | 35 | 27 |
| REX05JX | 191 | 0.000 | 2800 | 49 | 59 | 66 | 67 | 62 | 58 | 52 | 43 |
| | 131 | 0.500 | 2800 | 57 | 61 | 71 | 67 | 64 | 59 | 52 | 45 |
| | 45 | 1.250 | 2800 | 55 | 57 | 71 | 65 | 69 | 60 | 55 | 52 |
| REX06J | 257 | 0.000 | 2680 | 55 | 57 | 63 | 66 | 61 | 59 | 52 | 46 |
| | 178 | 0.500 | 2680 | 58 | 61 | 60 | 64 | 60 | 58 | 52 | 43 |
| | 59 | 1.250 | 2680 | 53 | 59 | 65 | 64 | 62 | 60 | 56 | 51 |
| REX06JX | 392 | 0.000 | 2930 | 60 | 62 | 68 | 76 | 71 | 63 | 59 | 51 |
| | 191 | 1.250 | 2930 | 58 | 68 | 68 | 74 | 69 | 61 | 56 | 47 |
| REX08J | 481 | 0.000 | 2580 | 58 | 60 | 65 | 69 | 67 | 64 | 61 | 55 |
| | 237 | 0.750 | 2580 | 53 | 70 | 66 | 68 | 62 | 58 | 50 | 40 |
| | 76 | 1.500 | 2580 | 55 | 71 | 71 | 69 | 65 | 61 | 55 | 49 |
| REX08JX | 521 | 0.000 | 2930 | 57 | 64 | 68 | 74 | 72 | 68 | 61 | 59 |
| | 345 | 0.750 | 2930 | 56 | 68 | 67 | 72 | 68 | 63 | 55 | 48 |
| | 180 | 1.500 | 2930 | 57 | 74 | 73 | 74 | 68 | 63 | 56 | 48 |
| REX10J | 521 | 0.000 | 2930 | 63 | 63 | 70 | 73 | 71 | 66 | 64 | 64 |
| | 357 | 0.750 | 2930 | 69 | 69 | 66 | 71 | 68 | 63 | 59 | 56 |
| | 176 | 1.500 | 2930 | 63 | 71 | 70 | 71 | 67 | 62 | 57 | 51 |
| REX10JX | 590 | 0.000 | 2460 | 62 | 68 | 72 | 74 | 72 | 68 | 65 | 62 |
| | 442 | 0.750 | 2460 | 64 | 67 | 73 | 73 | 70 | 65 | 62 | 57 |
| | 290 | 1.500 | 2460 | 67 | 69 | 73 | 72 | 69 | 63 | 58 | 53 |
| REX12J | 711 | 0.000 | 2450 | 60 | 60 | 64 | 71 | 68 | 65 | 63 | 64 |
| | 382 | 0.750 | 2450 | 56 | 60 | 62 | 62 | 61 | 56 | 51 | 47 |
| | 166 | 1.500 | 2450 | 61 | 68 | 68 | 68 | 67 | 61 | 56 | 52 |

Notes: The sound ratings shown are in decibels, referred to 10-12 Watts calculated per AMCA Standard 301. Values shown are for inlet (LWi) sound power levels for installation Type D; Ducted Inlet, Ducted Outlet. Performance ratings do not include the effects of appurtenances in the airstream

Sample Specifications

Centrex REX JR.

Centrifugal Inline Exhaust Fans shall be Rex Jr. Direct Drive, by PennBarry, Richardson, Texas 75081. Fan housing shall be constructed of heavy gauge galvanized sheet metal with a powder coated finish. Internal air turning vanes shall be provided for maximum air performance. Fan shall be supplied with externally mounted electrical terminal box with pre-wired terminal strip connections.

Motorized impeller shall be an external rotor type, class B insulation, totally enclosed with permanent split capacitor (except REX 4J and REX 5J, shaded pole type). Motor shall be permanently sealed self lubricating ball bearing type. Motor shall be equipped with automatic reset thermal overload protection. Motor shall be acceptable for continuous duty. Sufficient service factor shall be provided to ensure long maintenance free operation over maximum load conditions.

Fan wheel shall be of the backward inclined airfoil type with a well designed inlet venturi for maximum performance. Motorized impeller shall be both statically and dynamically balanced as one integral unit to provide for vibration free performance.

Each fan shall bear the AMCA Licensed Ratings Seal for Air and Sound Performance, and shall be UL and CSA (or equal) listed.



Limited One Year Warranty

Centrex REX JR.

What Products Are Covered

PennBarry Fans and Ventilators (each, a "PennBarry Product")

One Year Limited Warranty For PennBarry Products

PennBarry warrants to the original commercial purchaser that the PennBarry Products will be free from defects in material and workmanship for a period of one (1) year from the date of shipment.

Exclusive Remedy

PennBarry will, at its option, repair or replace (without removal or installation) the affected components of any defective PennBarry Product; repair or replace (without removal or installation) the entire defective PennBarry Product; or refund the invoice price of the PennBarry Product. In all cases, a reasonable time period must be allowed for warranty repairs to be completed.

What You Must Do

In order to make a claim under these warranties:

1. You must be the original commercial purchaser of the PennBarry Product.
2. You must promptly notify us, within the warranty period, of any defect and provide us with any substantiation that we may reasonably request.
3. The PennBarry Product must have been installed and maintained in accordance with good industry practice and any specific PennBarry recommendations.

Exclusions

These warranties do not cover defects caused by:

1. Improper design or operation of the system into which the PennBarry Product is incorporated.
2. Improper installation.
3. Accident, abuse or misuse.
4. Unreasonable use (including any use for non-commercial purposes, failure to provide reasonable and necessary maintenance as specified by PennBarry, misapplication and operation in excess of stated performance characteristics).
5. Components not manufactured by PennBarry.

Limitations

1. In all cases, PennBarry reserves the right to fully satisfy its obligations under the Limited Warranties by refunding the invoice price of the defective PennBarry Product (or, if the PennBarry Product has been discontinued, of the most nearly comparable current product).
2. PennBarry reserves the right to furnish a substitute or replacement component or product in the event a PennBarry Product or any component of the product is discontinued or otherwise unavailable.
3. PennBarry's only obligation with respect to components not manufactured by PennBarry shall be to pass through the warranty made by the manufacturer of the defective component.

General

The foregoing warranties are exclusive and in lieu of all other warranties except that of title, whether written, oral or implied, in fact or in law (including any warranty of merchantability or fitness for a particular purpose).

PennBarry hereby disclaims any liability for special, punitive, indirect, incidental or consequential damages, including without limitation lost profits or revenues, loss of use of equipment, cost of capital, cost of substitute products, facilities or services, downtime, shutdown or slowdown costs.

The remedies of the original commercial purchaser set forth herein are exclusive and the liability of PennBarry with respect to the PennBarry Products, whether in contract, tort, warranty, strict liability or other legal theory shall not exceed the invoice price charged by PennBarry to its customer for the affected PennBarry Product at the time the claim is made.

Inquiries regarding these warranties should be sent to: PennBarry, 1401 North Plano Road, Richardson, TX 75081.

Notes

Centrex REX JR.

OTHER PENNBARRY PRODUCTS

CENTRIFUGAL PRODUCTS



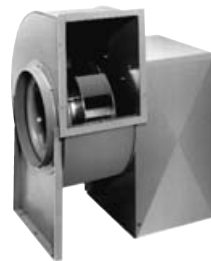
Domex
Centrifugal
Roof Exhausters



Fumex Fatrap
Kitchen Hood Centrifugal
Roof Exhausters



Zephyr
Ceiling and Inline Fans



Dynamo
Centrifugal Blowers



Centrex Inliner
Centrifugal Inline Fans



LC Dynafan
Low Contour Centrifugal
Roof Exhausters

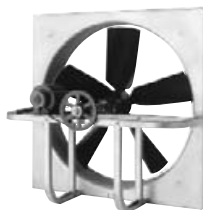


ESI
Efficient Silent
Inline Fan



Fume Exhaust
Curb Mounted
Centrifugal Fans

AXIAL / GRAVITY PRODUCTS



Breezeway
Propeller Wall Fans



HI-EX
Power Roof Ventilator



Tubeaxial
Inline Fans



Vaneaxial
Inline Fans



Powered Airette
Axial Roof Ventilators



Airette
Gravity Intake/Relief Hood



Domex Axial
Axial Roof Ventilators



Axcentrix
Bifurcator Fan

For more information contact your local PennBarry Sales
Manufacturer Representative or visit us at www.PennBarry.com