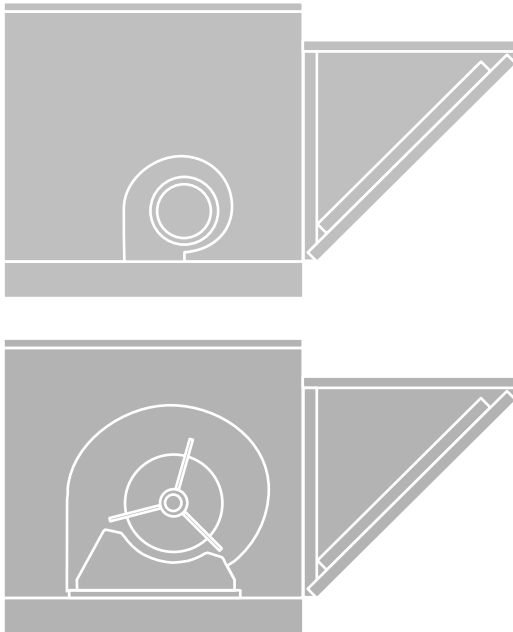


KSP

KSP

Filtered Kitchen Supply Packaged Ventilator



Page

Introduction	2
Information	3
Specifications and Dimension Data	
KSPD	4
KSPB	5
Accessories	6-8
Performance Data and Curves	
94-127 KSPD	9
90-120 KSPB	10-11
150-200 KSPB	12-13
Sound Data	
94-124 KSPD	14
125-127 KSPD	15
90-100 KSPB	15
120-200 KSPB	16

INTRODUCTION

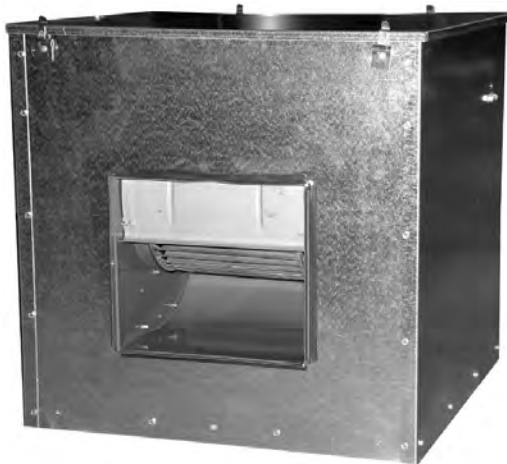
Loren Cook Company's KSP product line provides maximum performance and durability in kitchen supply applications. The KSP product line includes both KSPD direct drive units and KSPB belt drive units. The KSPD is available in 3 different cabinet sizes with flow rates ranging from 100 CFM to 1800 CFM and static pressures up to 0.75 inches. The KSPB is available in 6 different sizes with wheel diameters ranging from 9" to 20", with flow rates from 400 CFM to 12,000 CFM and static pressures up to 1.75 inches.

KSP - Bottom Discharge



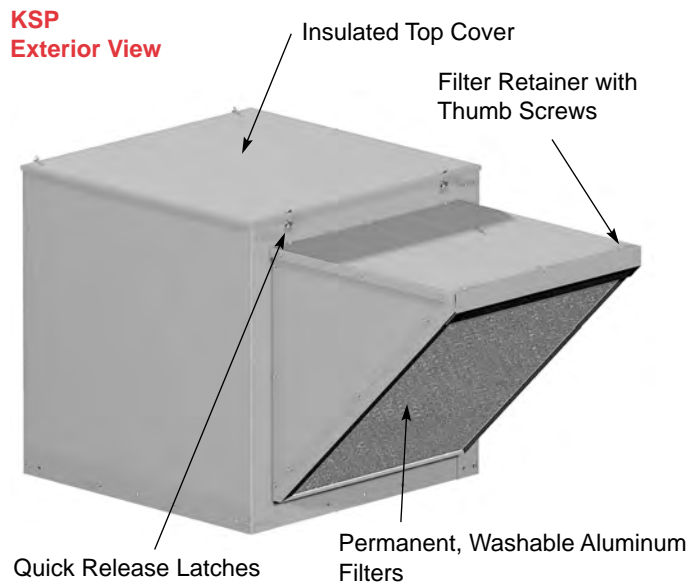
- The insulated top cover provides weather protection for the motor and drive components.
- Quick release latches provide tool-free access for inspection and maintenance of motor and drive components.
- Blower assembly is supported by rubber isolators to reduce noise and vibration level transmitted to the supporting structure.
- Integral 3" skirt with pre-punched mounting holes for ease of installation.
- Intake hood with 1" permanent, washable aluminum filters standard.

KSP - Side Discharge

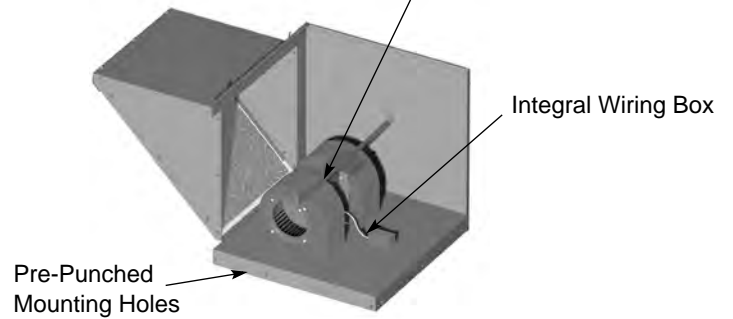


- Reinforcing cross breaks in intake hood top to prevent drumming.
- Minimum 18 gauge galvanized steel housing.
- Corrosion resistant fasteners.

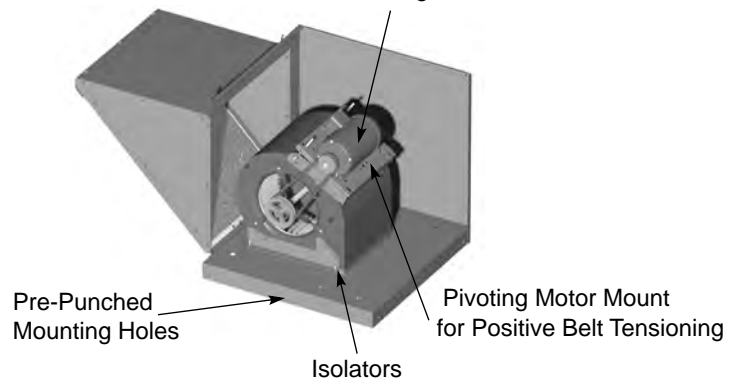
Standard Construction Features



KSPD Side View
 Permanently Lubricated, Heavy Duty Sealed Bearing Motors

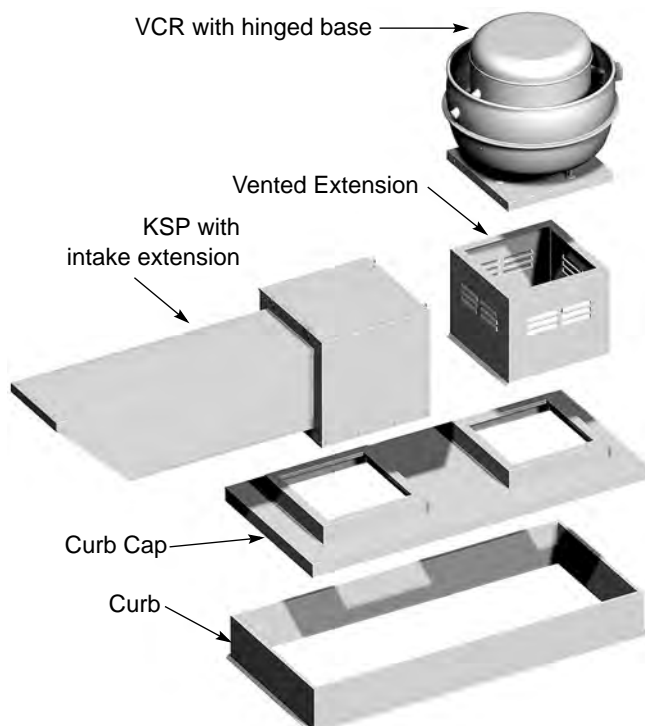


KSPB Side View
 Permanently Lubricated, Heavy Duty Sealed Bearing Motors



NFPA 96 Typical Specifications

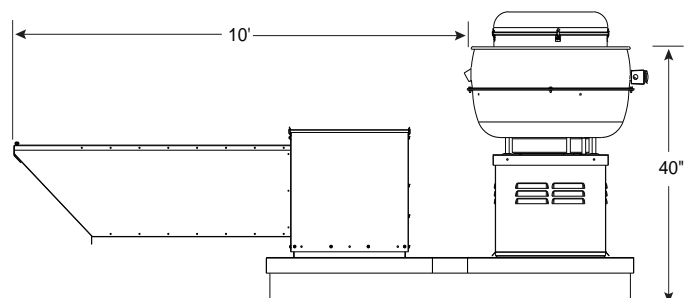
The NFPA 96 specification unit shall be a Cook VCR unit and Cook KSP unit mounted on a Cook Common Curb cap. The VCR shall include a hinged base or hinge kit, a vented extension, a drain tube to direct grease away from the fan, and a NFPA 96 compliant grease collection device such as the Cook aluminum grease trough or Cook Grease Terminator. The KSP unit shall include an intake extension. This will provide the minimum dimensions required to meet NFPA 96 requirements.



NFPA 96 Requirements

The exhaust fan must be installed so that the outlet of the fan is a minimum of 40 inches from the roof surface and the welded duct terminates at the bottom of the fan a minimum of 18 inches from the roof surface. The inlet of the supply fan must be a minimum of 10 feet away from the outlet of the exhaust fan. Where a 10 foot horizontal separation is not possible a 3 foot minimum vertical separation is acceptable and a special extended vented extension is required.

Standard Installation



Filtered Kitchen Supply Packaged Ventilator Side or Bottom Discharge Direct Drive



Bottom Discharge



Side Discharge



Loren Cook Company certifies that the KSPD shown herein is licensed to bear the AMCA Seal. The ratings shown are based on tests and procedures performed in accordance with AMCA Publication 211 and comply with the requirements of the AMCA Certified Ratings Program.



Type KSPD is furnished standard with UL 705 listing (Power Ventilator/ZACT).



Type KSPD is furnished standard with cUL listing (Power Ventilator).

Description - Fan shall be a side intake, roof mounted, direct driven, centrifugal filtered supply fan.

Certifications - Fan shall be manufactured at an ISO 9001 certified facility. Fan shall be listed by Underwriters Laboratories (UL 705) and UL listed for Canada (cUL 705). Fan shall bear the AMCA Certified Ratings Seal for Air Performance.

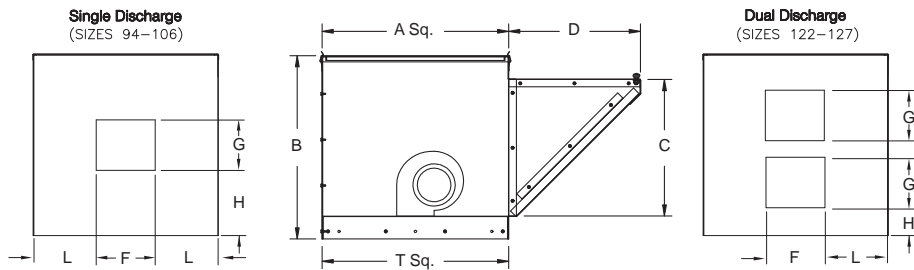
Construction - Fan shall be of bolted construction utilizing corrosion resistant fasteners. Housing shall be minimum 18 gauge galvanized steel, bolted to a minimum 16 gauge steel fan base with prepunched mounting holes. Unit shall be provided with an insulated top cover and one inch washable permanent aluminum filter. The motor assembly shall be mounted on rubber vibration isolators. Unit shall bear an engraved aluminum nameplate and shall be shipped in ISTA Certified Transit Tested Packaging.

Wheel - Wheel shall be centrifugal forward curved type, constructed of galvanized steel. Wheel shall be balanced in accordance with AMCA Standard 204-05, Balance Quality and Vibration Levels for Fans.

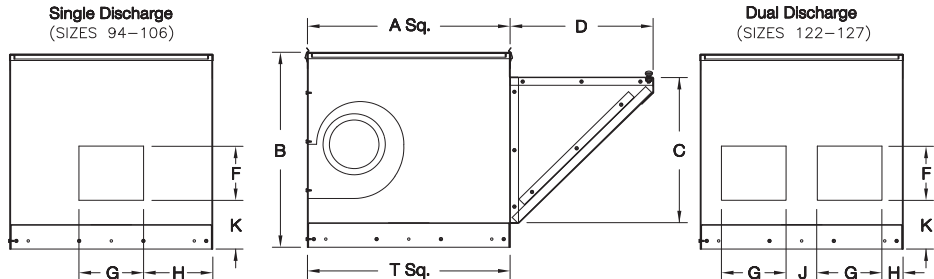
Motor - Motor shall be open drip proof type with permanently lubricated sealed bearings and built-in thermal overload protection. Motor shall be furnished at the specified voltage.

Product - Fan shall be model KSPD as manufactured by Loren Cook Company of Springfield, Missouri.

Bottom Discharge Duct Connection Dimensions



Side Discharge Duct Connection Dimensions



KSPD Discharge Dimension Data

Model	A Sq.	B	C (Height x Width)	D	T Sq.	Material Gauges		Approx. Ship Wt.
						Housing	Base	
94 - 99 KSPD	24-11/16	24	18 x 18-1/4	17-1/4	24-1/4	18	16	190
103 - 106 KSPD	28-11/16	27	21 x 22-1/4	20-1/4	28-1/4	18	16	210
122 - 127 KSPD	32-11/16	32-1/4	26-3/16 x 26-1/2	25-5/8	32-1/4	18	16	270

All dimensions in inches, weights in lbs.

KSPD Dimension Data for Outlet

Size	F	G	H	J	K	L
94, 95	3	4-9/16	9-13/16	-	6-1/4	10-5/8
96, 97	3-7/16	4-7/8	9-5/8	-	6-1/4	10-7/16
98, 99	3-7/8	5-5/8	9-1/4	-	6-1/4	10-1/4
103-106	3-7/8	8-9/16	9-13/16	-	6-1/4	12-3/16
122-124	4-7/8	6-7/16	6-7/8	6	3-7/16	13-11/16
125-127	4-7/8	6-1/4	4-7/8	10	3-15/16	14

All dimensions in inches.

Description - Fan shall be a side intake, roof mounted, belt driven, centrifugal filtered supply fan.

Certifications - Fan shall be manufactured at an ISO 9001 certified facility. Fan shall be listed by Underwriters Laboratories (UL 705) and UL listed for Canada (cUL 705). Fan shall bear the AMCA Certified Ratings Seal for Sound and Air Performance.

Construction - Fan shall be of bolted construction utilizing corrosion resistant fasteners. Housing shall be minimum 18 gauge galvanized steel, bolted to a minimum 16 gauge steel fan base with prepunched mounting holes. Unit shall be provided with an insulated top cover and one inch washable permanent aluminum filter. Internal blower and motor assembly shall be mounted on rubber vibration isolators. Unit shall bear an engraved aluminum nameplate and shall be shipped in ISTA Certified Transit Tested Packaging.

Wheel - Wheel shall be DWDI centrifugal forward curved type, constructed of painted steel. Wheel shall be balanced in accordance with AMCA Standard 204-05, Balance Quality and Vibration Levels for Fans.

Motor - Motor shall be Nema design B with class B insulation rated for continuous duty and furnished at the specified voltage, phase and enclosure.

Bearings (Size 90-180) - Bearings shall be permanently lubricated, sealed ball type selected for a minimum L50 life in excess of 200,000 hours at maximum cataloged operating speed.

Bearings (Size 200) - Bearings shall be designed and individually tested specifically for use in air handling applications. Construction shall be heavy duty regreasable ball type in a cast iron housing selected for a minimum L50 life in excess of 200,000 hours at maximum cataloged operating speed.

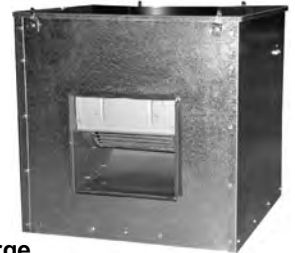
Belts and Drives - Belts shall be oil and heat resistant, non-static type. Drives shall be precision machined cast iron type, keyed and securely attached to the wheel and motor shafts. Drives shall be sized for 150 percent of the installed motor horsepower. The variable pitch motor drive must be factory set to the specified fan RPM.

Product - Fan shall be model KSPB as manufactured by Loren Cook Company of Springfield, Missouri.

Filtered Kitchen Supply Packaged Ventilator Side or Bottom Discharge Belt Drive

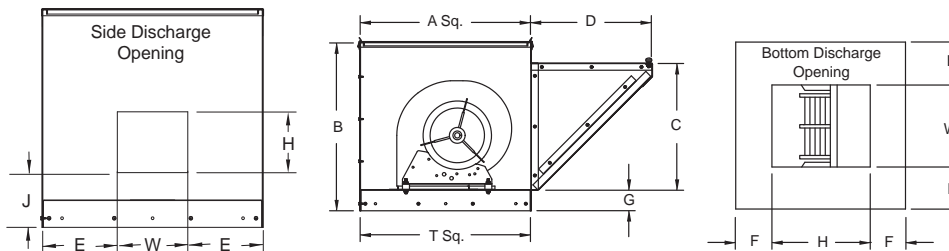


Bottom Discharge



Side Discharge

Loren Cook Company certifies that the KSPB shown herein is licensed to bear the AMCA Seal. The ratings shown are based on tests and procedures performed in accordance with AMCA Publication 211 and AMCA Publication 311 and comply with the requirements of the AMCA Certified Ratings Program.



KSPB Dimension Data

Model	A Sq.	B	C	D	E	F	G	T Sq.
90 KSPB	24-11/16	24	18 x 18-1/4	17-1/4	6-7/32	7	3	24-1/8
100 KSPB	28-11/16	27	21 x 22-1/4	20-1/4	7-5/8	8-7/16	3	28-1/8
120 KSPB	32-11/16	32-1/4	26-3/16 x 26-1/2	25-5/8	8-3/8	8-3/4	3	32-1/8
150 KSPB	32-11/16	37-7/8	31-5/16 x 28-1/2	30-3/4	6-7/8	6-5/16	3	32-1/8
180 KSPB	36-11/16	41-7/16	35-7/16 x 30-1/4	34-13/16	7-1/4	5-5/16	3	36-1/8
200 KSPB	48-11/16	49-7/16	37-7/16 x 42-1/4	36-13/16	11-11/16	12-15/16	3	48-1/8



Type KSPB is furnished standard with UL 705 listing (Power Ventilator/ZACT) when furnished with factory supplied motor.



Type KSPB is furnished standard with cUL listing (Power Ventilator) when furnished with factory supplied motor.

Model	Discharge Opening (H x W)	J	Filters		Material Gauges		Roof Opening Square*	Approx. Ship Wt. Lbs.
			Qty.	Size	Base	Housing		
90 KSPB	10-1/8 x 11-9/16	5-1/4	1	17-3/4 x 22-3/4	16	18	19-1/2	183
100 KSPB	11-1/4 x 12-7/8	5-1/4	1	21-3/4 x 27	16	18	23-1/2	218
120 KSPB	13-5/16 x 15-3/8	5-1/4	1	25-3/4 x 34-3/8	16	18	27-1/2	253
150 KSPB	15-3/4 x 18-3/8	5-1/4	2	20-3/4 x 28	16	18	27-1/2	327
180 KSPB	18-3/4 x 21-5/8	5-1/4	2	23-5/8 x 29-3/4	16	18	31-1/2	392
200 KSPB	24-7/8 x 24-3/4	5-3/4	2	25 x 41-3/4	16	18	43-1/2	589

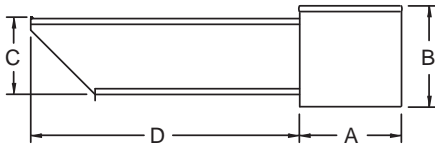
All dimensions in inches. *Roof opening size for curbs supplied by Cook only.

ACCESSORIES

Intake Extension



The KSP Intake Extension is available for all sizes. Constructed of heavy gauge galvanized steel, the extension must be supported at the intake end by an equipment support. Filters are installed at the intake end as in the standard unit. An optional backdraft damper can be installed in the intake extension (See Page 8). A KSP with an intake extension is required for NFPA 96 installations where physical limitations of the roof permit its usage.

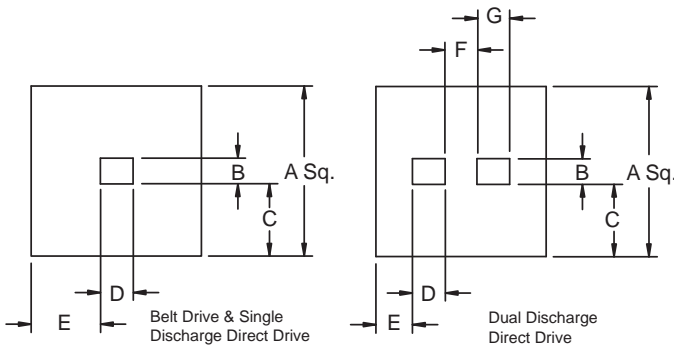


Model	A Sq.	B	C (HxW)	D
90 KSPB	24-3/16	24	18 X 18-1/4	92-1/2
100 KSPB	28-3/16	27	21 X 22-1/4	80-5/8
120 KSPB	32-3/16	32-1/4	26-3/16 X 26-1/2	80
150 KSPB		37-3/8	31-5/16 X 28-1/2	80-5/16
180 KSPB	36-3/16	41-7/16	35-7/16 X 30-1/4	73-5/16
200 KSPB	48-3/16	49-7/16	37-7/16 X 42-1/4	54-5/16

All dimensions in inches.

Duct Adapter

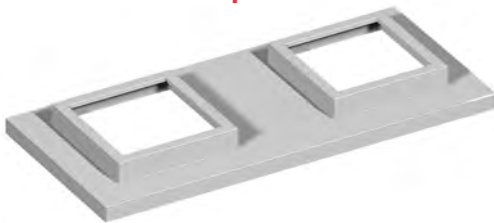
A duct adapter provides for easier installation of ductwork prior to placing the fan on the roof curb.



Model	A Sq.	B	C	D	E	F	G
90 KSPB	22-1/2	10-1/8	6-3/16	11-11/16	5-7/16	-	-
100 KSPB	26-1/2	11-1/4	7-5/8	13	6-3/4	-	-
120 KSPB	30-1/2	13-7/16	8-9/16	15-1/2	7-1/2	-	-
150 KSPB	30-1/2	15-3/4	7-3/8	18-1/2	8	-	-
180 KSPB	34-1/2	18-3/4	7-7/8	21-3/4	6-3/8	-	-
200 KSPD	46-1/2	24-7/8	10-13/16	24-7/8	10-13/16	-	-
94, 95 KSPD	22-1/2	3	9-3/4	4-9/16	8-15/16	-	-
96, 97 KSPD	22-1/2	3-7/16	9-9/16	4-7/8	8-13/16	-	-
98, 99 KSPD	22-1/2	3-7/8	9-5/16	5-5/8	8-7/16	-	-
103, 106 KSPD	26-1/2	3-7/8	11-5/16	8-9/16	8-15/16	-	-
122, 124 KSPD	30-1/2	4-7/8	12-13/16	6-3/16	6-1/16	6	6-3/16
125, 127 KSPD	30-1/2	4-1/4	13-1/8	6-1/4	4	10	6-1/4

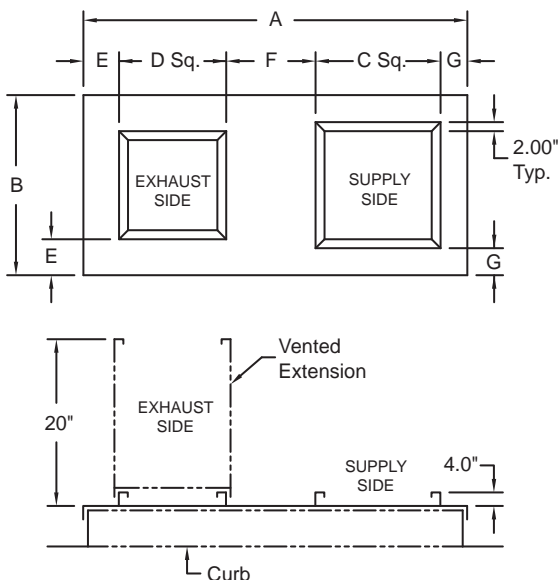
All dimensions in inches.

Common Curb Cap



The curb cap is designed to allow both the exhaust and supply fans to be mounted on the same roof curb. This reduces installation time and requires only one roof opening.

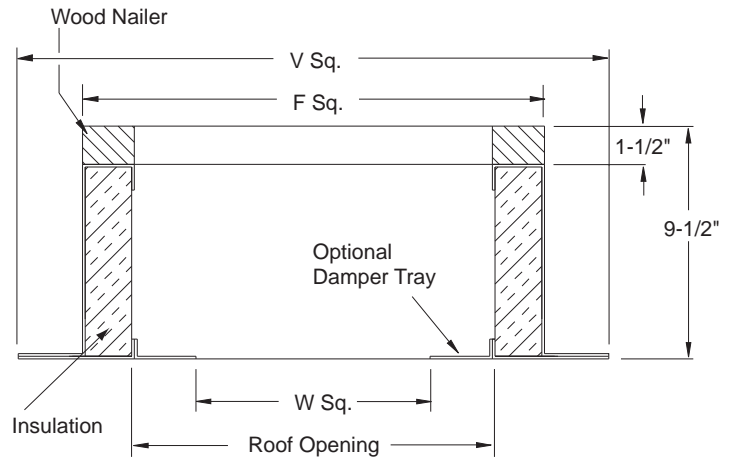
The curb cap, when used with the Loren Cook Company type ACRU, LPB or VCR and KSP with intake extension, will meet the NFPA 96 requirement of a minimum ten feet separation between exhaust fan outlet and supply fan intake.



KSP Size	VCR Size	A	B	C Sq.	D Sq.	E	F	G
90	120-135	72-1/2	34-1/2	23-3/8	18-5/8	8	17	5-5/8
90	150-165	72-1/2	34-1/2	23-3/8	22-5/8	6	15	5-5/8
90	180-195	72-1/2	34-1/2	23-3/8	28-5/8	3	12	5-5/8
100	150-165	78-1/2	34-1/2	27-3/8	22-5/8	6	19	3-5/8
100	180-225	78-1/2	34-1/2	27-3/8	28-5/8	3	16	3-5/8
120	180-245	84-1/2	36-1/2	31-3/8	28-5/8	4	18	2-5/8
150	180-245	92-1/2	40-1/2	31-3/8	28-5/8	6	22	4-5/8
150	270-300	92-1/2	40-1/2	31-3/8	34-5/8	3	19	4-5/8
180	210-245	104-1/2	46-1/2	35-3/8	28-5/8	9	26	5-5/8
180	270-300	104-1/2	46-1/2	35-3/8	28-5/8	9	26	5-5/8
180	330	104-1/2	46-1/2	35-3/8	40-5/8	3	20	5-5/8
200	270-300	120-1/2	52-1/2	47-3/8	34-5/8	9	27	2-5/8
200	330	120-1/2	52-1/2	47-3/8	40-5/8	6	24	2-5/8

All dimensions in inches.

Roof Curb



Standard Construction Features

- 18 gauge galvanized steel (RCG) or .080 aluminum (RCA).
- 1-1/2", 3 lbs. density thermal and acoustical insulation.
- Continuously welded corners.
- Wood nailer.

Options

- No wood nailer (deduct 1-1/2" from height).
- 13-1/2" tall construction.
- 3" cant (add 4" to V Sq. dimension).

Roof Curb

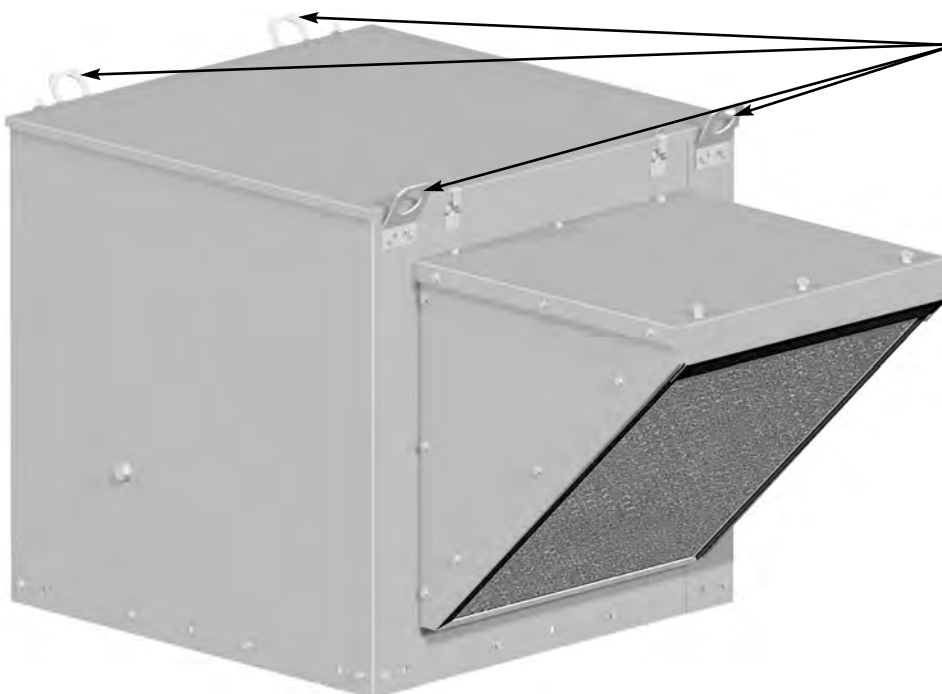
KSP Unit	Catalog Number		F Sq.	V Sq.	W Sq.	Roof Opening
	Galvanized	Aluminum				
90	RCG-22	RCA-22	22-1/2	26-1/2	15-3/4	19-1/2
100	RCG-26	RCA-26	26-1/2	30-1/2	19-3/4	23-1/2
120, 150	RCG-30	RCA-30	30-1/2	34-1/2	23-3/4	27-1/2
180	RCG-34	RCA-34	34-1/2	38-1/2	27-3/4	31-1/2
200	RCG-46	RCA-46	46-1/2	50-1/2	39-3/4	43-1/2

All dimensions in inches.

Common Curb

KSP Size	VCR Size	Catalog Number	F	V	Roof Opening
90	120-195	RCG-33 x 71	33 x 71	37 x 75	30 x 68
100	150-225	RCG-33 x 77	33 x 77	37 x 81	30 x 74
120	180-245	RCG-35 x 83	35 x 83	39 x 87	32 x 80
150	180-300	RCG-39 x 91	39 x 91	43 x 95	36 x 88
180	210-330	RCG-45 x 103	45 x 103	49 x 107	42 x 100
200	270-330	RCG-51 x 119	51 x 119	55 x 123	48 x 116

All dimensions in inches. *Damper tray not available on common curb.



Lifting Lugs

The addition of these heavy duty bolt on lifting lugs provides for safer, faster, more efficient lifting of the KSP unit onto a roof top. Lifting lugs are available on all sizes.

ACCESSORIES

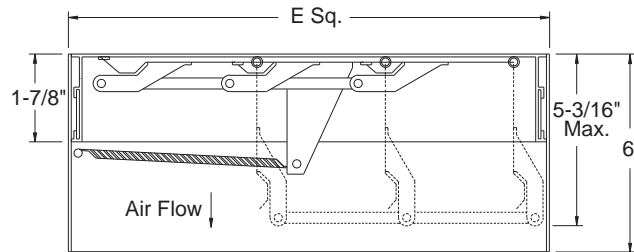
Dampers

Loren Cook Intake Backdraft Dampers (BDI) and Motorized Intake Backdraft Dampers feature extruded aluminum frames, aluminum blades and aluminum hinge pins with nylon bushings.

The Intake Backdraft Damper features a spring return for closing. Maximum operating temperature is 200°F (95°C).

Motors on Motorized Intake Backdraft Dampers are non-overloading type available in 115, 230, or 460 voltage, single phase. Size 200 KSP (BDMI-42) uses two motors. In addition, a wood nailer must be supplied on a 9-1/2 inch curb. Maximum operating temperature is 130°F (50°C).

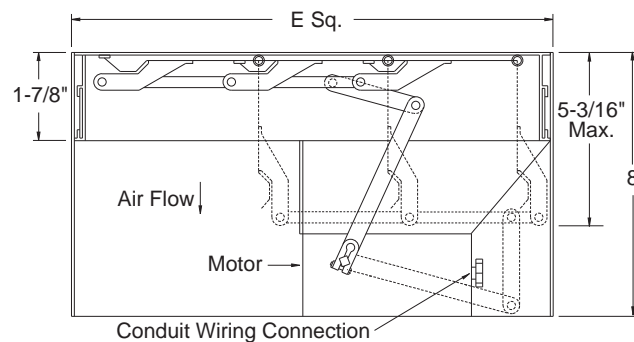
Intake Backdraft Damper (Curb Mounted)



KSP Unit Size	Catalog Number	E. Sq.
90	BDI-18	17-3/4
100	BDI-22	21-3/4
120, 150	BDI-26	25-3/4
180	BDI-30	29-3/4
200	BDI-42	41-3/4

All dimensions in inches.

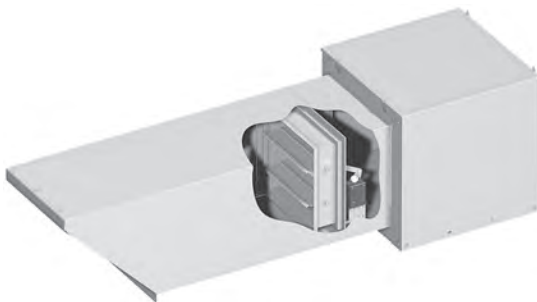
Motorized Intake Backdraft Damper (Curb Mounted)



KSP Unit Size	Catalog Number	E. Sq.
90	BDMI-18	17-3/4
100	BDMI-22	21-3/4
120, 150	BDMI-26	25-3/4
180	BDMI-30	29-3/4
200	BDMI-42	41-3/4

All dimensions in inches.

Intake Dampers (Extended Intake Mounted)



Motorized intake dampers are available factory mounted inside the extended intake to prevent backdraft.

Disconnect Switches

NEMA 1 - Indoor, general purpose

NEMA 1 (Lockable) - Indoor, general purpose with lockable switch

NEMA 3R - Exterior mount, weather resistant

NEMA 4 - Water tight, dust tight



NEMA 1



NEMA 1 (Lockable)

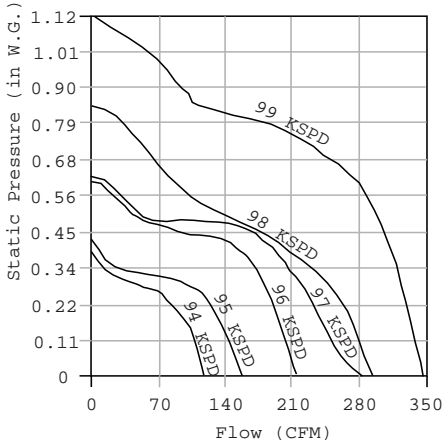
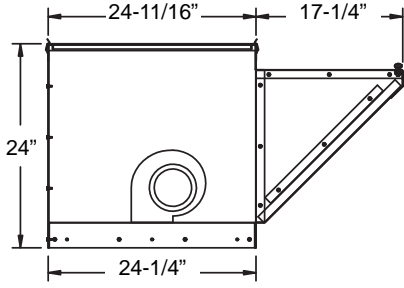


NEMA 3R

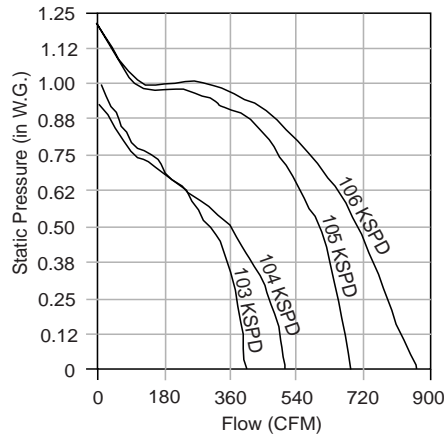
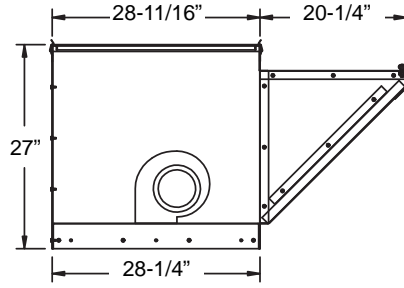


NEMA 4

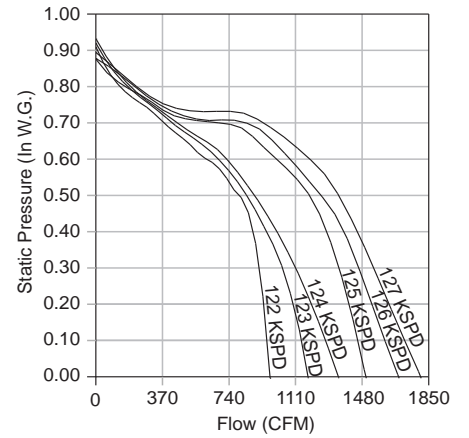
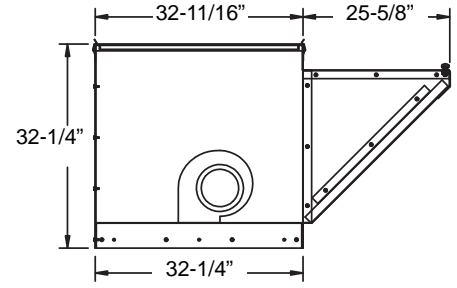
94 - 99 KSPD



103 - 106 KSPD



122 - 127 KSPD



94 - 127 KSPD

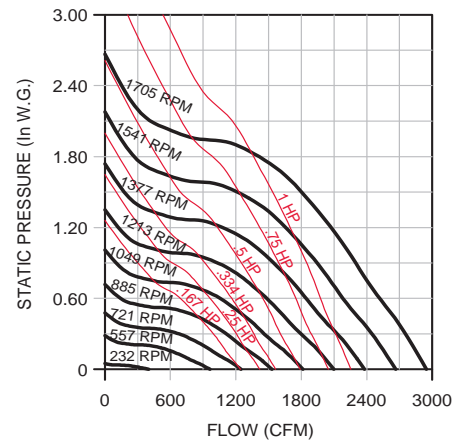
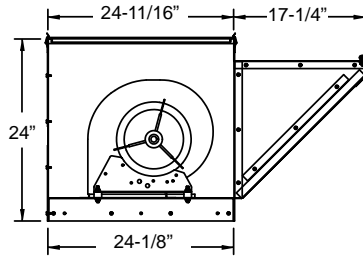
Model No.	Max Watts/ BHP	RPM	0.000" SP		0.125" SP		0.250" SP		0.375" SP		0.500" SP		0.625" SP		0.750" SP	
			CFM	Sone	CFM	Sone	CFM	Sone	CFM	Sone	CFM	Sone	CFM	Sone	CFM	Sone
94	43	1154	117	1.2	106	1.1	77	1.3								
95	75	1240	156	2.2	141	1.9	120	1.5								
96	87	1423	215	3.4	202	3.3	187	3.5	165	3.8						
97	150	1628	282	4.9	249	4.4	227	4.3	197	4.1						
98	180	1093	294	5.3	271	4.0	258	3.4	215	2.9						
99	160	1385	346	5.9	333	5.6	325	5.5	316	5.0	300	4.6	271	4.3	205	4.0
103	245	960	401	3.7	370	3.3	365	3.3	354	3.3	303	3.6				
104	350	1135	507	4.6	499	4.3	465	4.1	415	3.9	355	3.8				
105	322	1479	682	6.7	673	6.5	655	6.5	629	6.4	593	6.2	546	5.9	490	5.7
106	400	1646	861	8.6	816	8.3	780	7.9	744	7.5	702	7.0	644	6.3	571	5.6
122	293	1089	969	7.2	943	7.2	916	7.4	883	7.8	802	8.2	556	8.8	267	9.6
123	353	1109	1180	8.3	1130	8.3	1071	8.4	978	8.5	840	8.8	633	9.0	307	9.6
124	392	1144	1350	9.5	1260	9.0	1159	8.6	1037	8.3	884	8.1	683	8.2	318	8.5
125	415/284	1039	1504	7.6	1421	7.3	1374	7.5	1313	7.7	1188	8.0	952	8.4		
126	482/375	1093	1686	9.1	1580	8.7	1504	8.6	1411	8.4	1252	8.6	1056	8.7		
127	550/467	1143	1809	10.2	1698	9.6	1591	9.1	1480	8.7	1361	8.6	1136	8.5		

Performance certified is for Installation Type B: free inlet, ducted outlet. Power rating (BHP) does not include transmission losses. Performance ratings include the effects of air filters. Speed (RPM) shown is nominal. Performance is based on actual speed of the test. The AMCA Certified Ratings Seal applies to air performance ratings only.

90-120 KSPB Data

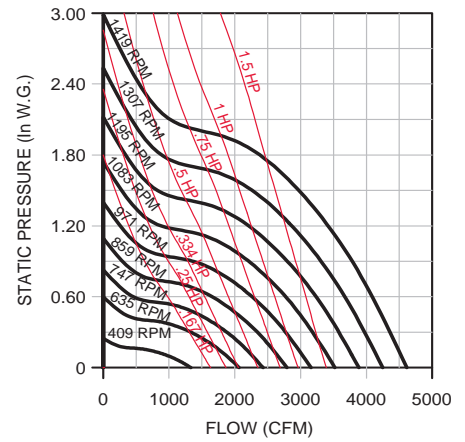
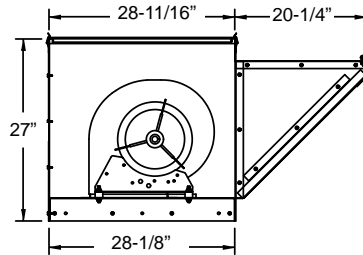
90 KSPB

Filter Size and Quantity: 17-3/4" x 22-3/4", 1
Max. BHP: 0.45 (RPM/1000)³
Max. RPM: 1705
Outlet Area: 0.813 sq. ft.
Outlet Velocity: CFM/0.813 fpm
Max Motor Frame: 145T
Approx. Shipping Weight Lbs.: 183



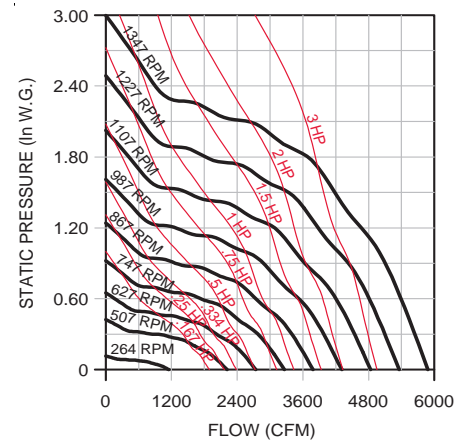
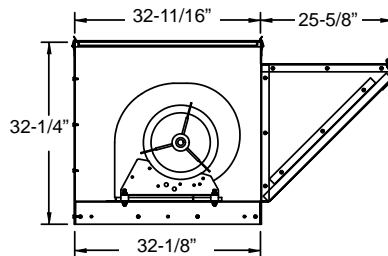
100 KSPB

Filter Size and Quantity: 21-3/4" x 27", 1
Max. BHP: 1.30 (RPM/1000)³
Max. RPM: 1419
Outlet Area: 1.01 sq. ft.
Outlet Velocity: CFM/1.01 fpm
Max Motor Frame: 145T
Approx. Shipping Weight Lbs.: 218



120 KSPB

Filter Size and Quantity: 25-3/4" x 34-3/8", 1
Max. BHP: 2.10 (RPM/1000)³
Max. RPM: 1347
Outlet Area: 1.42 sq. ft.
Outlet Velocity: CFM/1.42 fpm
Max Motor Frame: 184T
Approx. Shipping Weight Lbs.: 253



90 KSPB

CFM	Outlet Velocity	0.000" SP		0.125" SP		0.250" SP		0.375" SP		0.500" SP		0.750" SP		1.000" SP		1.250" SP		1.500" SP		1.750" SP	
		RPM	BHP	RPM	BHP	RPM	BHP	RPM	BHP	RPM	BHP	RPM	BHP	RPM	BHP	RPM	BHP	RPM	BHP	RPM	BHP
500	622	289	0.01	485	0.03																
600	747	347	0.02	522	0.04	653	0.06														
700	871	405	0.03	563	0.05	683	0.08	791	0.11												
800	996	463	0.04	609	0.07	720	0.10	818	0.13	911	0.17										
900	1120	521	0.06	656	0.09	759	0.12	852	0.16	938	0.20										
1000	1245	578	0.09	705	0.12	801	0.15	889	0.19	970	0.23	1121	0.32								
1100	1369	636	0.12	754	0.16	846	0.19	929	0.23	1006	0.27	1148	0.36	1281	0.46						
1200	1494	694	0.15	803	0.19	893	0.23	971	0.27	1045	0.32	1179	0.41	1306	0.51	1426	0.62				
1300	1618	752	0.19	852	0.24	942	0.28	1015	0.32	1085	0.37	1215	0.47	1334	0.57	1449	0.69	1559	0.80		
1400	1743	810	0.24	902	0.29	991	0.34	1061	0.38	1127	0.43	1252	0.53	1367	0.64	1476	0.76	1581	0.88		
1500	1867	868	0.29	953	0.35	1040	0.40	1109	0.45	1171	0.50	1292	0.60	1402	0.72	1506	0.84	1607	0.97	1705	1.10
1600	1992	925	0.36	1006	0.41	1088	0.47	1157	0.52	1217	0.57	1332	0.68	1440	0.80	1540	0.93	1636	1.06		
1700	2117	983	0.43	1058	0.49	1137	0.55	1206	0.61	1265	0.66	1374	0.77	1478	0.90	1576	1.03				
1800	2241	1041	0.51	1112	0.57	1186	0.64	1255	0.70	1313	0.76	1418	0.87	1519	1.00	1614	1.14				
1900	2366	1099	0.60	1166	0.66	1235	0.73	1304	0.80	1362	0.86	1463	0.98	1560	1.11						
2000	2490	1157	0.70	1221	0.77	1286	0.84	1352	0.91	1411	0.98	1510	1.10								
2100	2615	1215	0.81	1276	0.88	1337	0.95	1401	1.03	1460	1.11										
2200	2739	1272	0.93	1331	1.00	1389	1.08														

100 KSPB

CFM	Outlet Velocity	0.000" SP		0.125" SP		0.250" SP		0.375" SP		0.500" SP		0.750" SP		1.000" SP		1.250" SP		1.500" SP		1.750" SP	
		RPM	BHP	RPM	BHP	RPM	BHP	RPM	BHP	RPM	BHP	RPM	BHP	RPM	BHP	RPM	BHP	RPM	BHP	RPM	BHP
700	703	215	0.01	384	0.03	510	0.05	616	0.07												
850	854	261	0.02	408	0.05	524	0.07	624	0.09	714	0.12										
1000	1005	307	0.04	437	0.06	544	0.09	638	0.12	722	0.15	872	0.21								
1150	1155	354	0.06	468	0.09	568	0.12	656	0.15	736	0.18	880	0.25	1007	0.32	1120	0.40				
1300	1306	400	0.08	502	0.12	595	0.15	678	0.19	754	0.22	891	0.29	1014	0.37	1126	0.46	1228	0.55		
1450	1457	446	0.12	539	0.15	625	0.19	703	0.23	775	0.27	906	0.35	1024	0.43	1134	0.52	1235	0.61	1329	0.71
1600	1608	492	0.16	577	0.20	656	0.24	730	0.28	799	0.32	924	0.41	1038	0.50	1144	0.59	1243	0.69	1335	0.79
1750	1758	538	0.21	616	0.25	690	0.30	760	0.34	825	0.39	945	0.48	1055	0.57	1157	0.67	1253	0.77	1343	0.88
1900	1909	584	0.26	657	0.31	725	0.36	791	0.41	854	0.46	969	0.56	1074	0.66	1173	0.77	1266	0.87	1354	0.98
2050	2060	630	0.33	698	0.38	762	0.44	824	0.49	883	0.54	994	0.65	1096	0.76	1191	0.87	1281	0.98	1367	1.10
2200	2211	676	0.41	740	0.47	800	0.52	858	0.58	915	0.64	1021	0.75	1119	0.86	1212	0.98	1299	1.10	1382	1.22
2350	2361	723	0.50	783	0.56	838	0.62	893	0.68	947	0.74	1050	0.86	1145	0.98	1234	1.11	1319	1.24	1400	1.37
2500	2512	769	0.60	825	0.67	878	0.73	930	0.79	981	0.85	1080	0.99	1172	1.12	1258	1.25	1340	1.38	1419	1.52
2650	2663	815	0.72	869	0.79	919	0.85	968	0.92	1017	0.99	1111	1.12	1200	1.26	1284	1.40	1364	1.54		
2800	2814	861	0.84	912	0.92	960	0.99	1007	1.06	1053	1.13	1143	1.27	1229	1.42						
2950	2964	907	0.99	956	1.07	1001	1.14	1046	1.21	1090	1.29	1176	1.44								
3100	3115	953	1.15	1000	1.23	1043	1.31	1086	1.39	1128	1.46										

120 KSPB

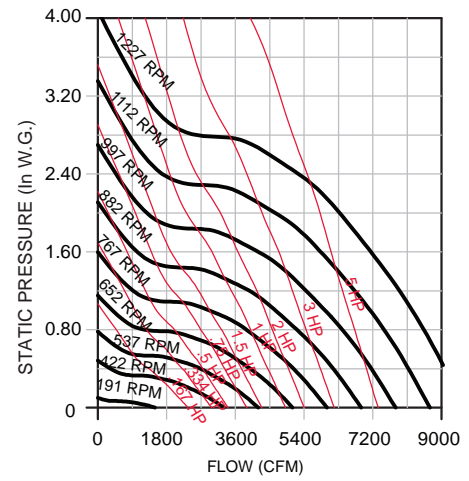
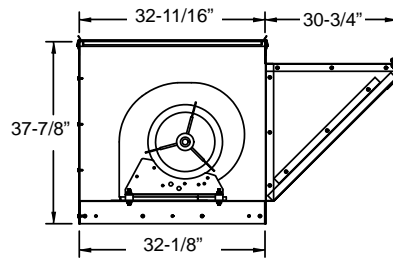
CFM	Outlet Velocity	0.000" SP		0.125" SP		0.250" SP		0.375" SP		0.500" SP		0.750" SP		1.000" SP		1.250" SP		1.500" SP		1.750" SP	
		RPM	BHP	RPM	BHP	RPM	BHP	RPM	BHP	RPM	BHP	RPM	BHP	RPM	BHP	RPM	BHP	RPM	BHP	RPM	BHP
1200	852	275	0.04	388	0.08	489	0.11	575	0.16												
1400	994	321	0.07	419	0.11	505	0.15	593	0.19	665	0.25										
1600	1136	366	0.10	449	0.14	533	0.20	608	0.24	684	0.30										
1800	1278	412	0.14	483	0.19	565	0.25	629	0.30	699	0.35	822	0.49								
2000	1420	458	0.20	521	0.25	596	0.32	659	0.38	716	0.43	841	0.56	942	0.72						
2200	1562	504	0.26	561	0.32	625	0.38	691	0.47	744	0.53	856	0.65	961	0.81	1050	0.99				
2400	1704	549	0.34	602	0.40	657	0.46	723	0.56	775	0.63	872	0.76	979	0.91	1068	1.09	1149	1.29		
2600	1846	595	0.43	644	0.50	693	0.56	752	0.65	808	0.75	897	0.90	992	1.04	1087	1.21	1167	1.41	1242	1.64
2800	1988	641	0.54	687	0.61	731	0.68	782	0.76	839	0.88	927	1.05	1009	1.19	1102	1.36	1187	1.56	1260	1.78
3000	2130	687	0.67	729	0.74	771	0.81	816	0.89	868	1.00	959	1.22	1035	1.38	1116	1.54	1203	1.73	1280	1.94
3200	2272	733	0.81	773	0.89	811	0.97	852	1.04	898	1.14	992	1.40	1066	1.58	1137	1.75	1216	1.93	1296	2.13
3400	2414	778	0.97	816	1.06	852	1.14	890	1.22	930	1.31	1023	1.58	1097	1.80	1164	1.98	1233	2.16	1309	2.35
3600	2556	824	1.15	860	1.24	895	1.33	929	1.41	966	1.50	1052	1.77	1130	2.04	1195	2.24	1257	2.42	1325	2.62
3800	2698	870	1.35	905	1.46	936	1.54	969	1.63	1003	1.72	1082	1.97	1162	2.28	1227	2.52	1286	2.72	1347	2.91
4000	2840	916	1.58	949	1.69	980	1.79	1010	1.87	1042	1.97	1112	2.19	1192	2.53	1259	2.81	1317	3.03		
4200	2982	962	1.83	993	1.94	1022	2.04	1051	2.14	1081	2.23	1146	2.45	1221	2.78	1291	3.11				
4400	3125	1007	2.10	1037	2.22	1066	2.33	1094	2.43	1122	2.53	1181	2.74	1251	3.05						
4600	3267	1053	2.40	1082	2.52	1109	2.64	1135	2.75	1163	2.86	1218	3.07								

Performance certified is for Installation Type B: free inlet, ducted outlet. Power rating (BHP) does not include transmission losses. Performance ratings include the effects of air filters.

150-200 KSPB Data

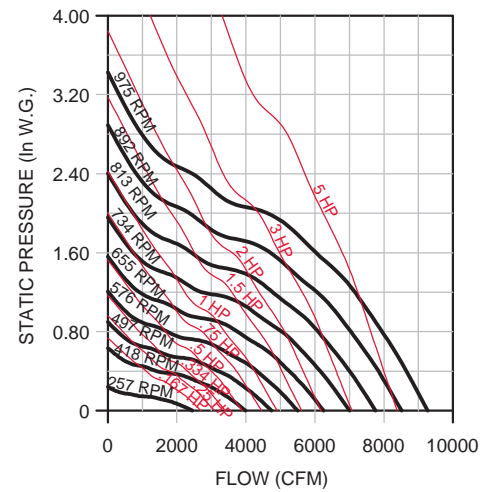
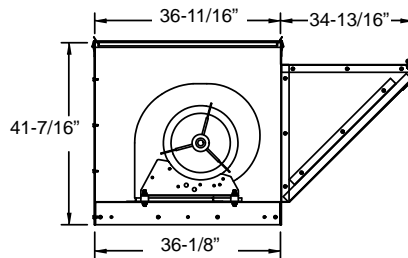
150 KSPB

Filter Size and Quantity: 20-3/4" x 28", 2
Max. BHP: 7.77 (RPM/1000)³
Max. RPM: 1154
Outlet Area: 2.01 sq. ft.
Outlet Velocity: CFM/2.01 fpm
Max Motor Frame: 184T
Approx. Shipping Weight Lbs.: 327



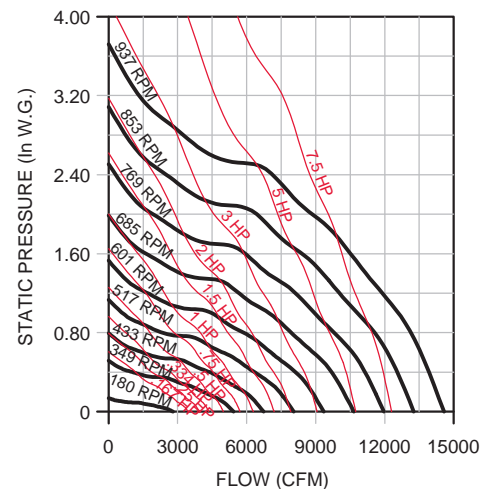
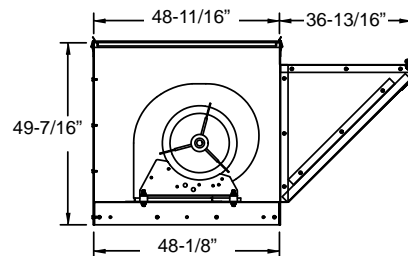
180 KSPB

Filter Size and Quantity: 23-5/8" x 29-3/4", 2
Max. BHP: 7.36 (RPM/1000)³
Max. RPM: 975
Outlet Area: 2.82 sq. ft.
Outlet Velocity: CFM/2.82 fpm
Max Motor Frame: 184T
Approx. Shipping Weight Lbs.: 392



200 KSPB

Filter Size and Quantity: 25" x 41-3/4", 2
Max. BHP: 15.17 (RPM/1000)³
Max. RPM: 937
Outlet Area: 4.28 sq. ft.
Outlet Velocity: CFM/4.28 fpm
Max Motor Frame: 213T
Approx. Shipping Weight Lbs.: 589



150 KSPB

CFM	Outlet Velocity	0.000" SP		0.125" SP		0.250" SP		0.375" SP		0.500" SP		0.750" SP		1.000" SP		1.250" SP		1.500" SP		1.750" SP	
		RPM	BHP	RPM	BHP	RPM	BHP	RPM	BHP	RPM	BHP	RPM	BHP	RPM	BHP	RPM	BHP	RPM	BHP	RPM	BHP
2100	1053	269	0.12	352	0.17	423	0.23	486	0.29	545	0.36	646	0.50								
2400	1203	307	0.17	381	0.24	447	0.30	505	0.37	560	0.44	659	0.60	745	0.76	825	0.93				
2700	1354	345	0.25	412	0.32	474	0.40	528	0.47	578	0.54	674	0.72	757	0.89	833	1.07	905	1.26		
3000	1504	384	0.34	444	0.42	501	0.50	553	0.59	600	0.66	689	0.84	772	1.04	846	1.23	914	1.43	980	1.64
3300	1654	422	0.45	477	0.54	530	0.63	579	0.72	625	0.81	708	0.99	787	1.20	860	1.42	927	1.63	990	1.84
3600	1805	460	0.59	511	0.69	560	0.79	607	0.89	651	0.98	729	1.17	804	1.38	875	1.62	942	1.85	1003	2.08
3900	1955	499	0.75	545	0.85	591	0.96	635	1.07	677	1.17	753	1.38	823	1.59	891	1.83	957	2.09	1018	2.35
4200	2106	537	0.94	581	1.05	623	1.16	664	1.28	705	1.40	779	1.62	846	1.85	910	2.09	973	2.35	1033	2.62
4500	2256	576	1.16	617	1.28	656	1.40	695	1.52	733	1.64	805	1.89	870	2.13	930	2.36	990	2.63	1049	2.92
4800	2407	614	1.40	652	1.53	689	1.65	726	1.79	762	1.92	831	2.18	895	2.44	954	2.70	1010	2.96	1066	3.25
5100	2557	652	1.68	689	1.82	723	1.95	758	2.09	792	2.23	859	2.51	921	2.79	978	3.06	1032	3.33	1085	3.62
5400	2708	691	2.00	725	2.14	758	2.28	791	2.43	823	2.57	887	2.87	947	3.16	1003	3.45	1056	3.74	1107	4.04
5700	2858	729	2.34	762	2.50	793	2.65	824	2.80	855	2.96	916	3.27	974	3.58	1029	3.89	1081	4.19	1130	4.50
6000	3009	767	2.73	799	2.90	828	3.05	858	3.22	887	3.37	945	3.7	1002	4.04	1056	4.37	1106	4.68	1154	5.00
6300	3159	806	3.17	836	3.34	864	3.50	892	3.67	920	3.84	976	4.18	1030	4.53	1083	4.88	1132	5.21		
6600	3309	844	3.64	873	3.82	900	3.99	927	4.17	953	4.34	1007	4.70	1059	5.06	1110	5.43				
6900	3460	883	4.16	910	4.35	936	4.53	962	4.71	987	4.89	1038	5.26								
7200	3610	921	4.72	947	4.92	973	5.12	997	5.30	1021	5.48										
7500	3761	959	5.33																		

180 KSPB

CFM	Outlet Velocity	0.000" SP		0.125" SP		0.250" SP		0.375" SP		0.500" SP		0.750" SP		1.000" SP		1.250" SP		1.500" SP		1.750" SP	
		RPM	BHP	RPM	BHP	RPM	BHP	RPM	BHP	RPM	BHP	RPM	BHP	RPM	BHP	RPM	BHP	RPM	BHP	RPM	BHP
2900	1036	304	0.21	363	0.28	416	0.36	469	0.46	513	0.56										
3200	1144	335	0.28	389	0.36	438	0.44	487	0.54	532	0.65										
3500	1251	367	0.36	416	0.45	462	0.54	506	0.64	551	0.76	626	1.00								
3800	1358	398	0.46	444	0.56	487	0.66	527	0.76	569	0.87	644	1.14	709	1.41						
4100	1465	430	0.59	472	0.69	513	0.79	551	0.90	588	1.01	663	1.29	726	1.58						
4400	1573	461	0.72	500	0.83	539	0.95	575	1.06	610	1.18	681	1.45	745	1.76	801	2.08				
4700	1680	492	0.88	530	1.00	566	1.12	601	1.24	633	1.36	700	1.64	764	1.96	819	2.29	871	2.63		
5000	1787	524	1.06	559	1.19	593	1.32	626	1.44	658	1.57	719	1.85	782	2.17	838	2.53	888	2.88	937	3.24
5300	1894	555	1.26	589	1.40	620	1.53	652	1.67	683	1.81	740	2.08	800	2.41	856	2.77	907	3.16	953	3.53
5600	2002	587	1.49	618	1.63	648	1.77	679	1.92	708	2.06	763	2.35	819	2.68	875	3.05	925	3.43	971	3.83
5900	2109	618	1.74	648	1.89	677	2.05	706	2.20	734	2.34	787	2.65	839	2.97	893	3.34	944	3.74		
6200	2216	650	2.02	679	2.19	705	2.34	733	2.50	760	2.65	812	2.97	861	3.30	911	3.66	962	4.08		
6500	2323	681	2.32	709	2.50	735	2.67	761	2.83	787	3.00	837	3.33	884	3.66	931	4.02				
6800	2431	712	2.66	739	2.84	764	3.02	788	3.18	814	3.37	862	3.70	908	4.06	952	4.42				
7100	2538	744	3.03	769	3.22	793	3.40	817	3.58	841	3.76	888	4.12	932	4.48	975	4.86				
7400	2645	775	3.43	800	3.63	823	3.82	845	4.00	868	4.19	914	4.57	958	4.96						
7700	2752	807	3.87	831	4.08	853	4.28	874	4.46	896	4.66	941	5.06								
8000	2860	838	4.33	862	4.56	882	4.75	904	4.97	924	5.15										

200 KSPB

CFM	Outlet Velocity	0.000" SP		0.125" SP		0.250" SP		0.375" SP		0.500" SP		0.750" SP		1.000" SP		1.250" SP		1.500" SP		1.750" SP	
		RPM	BHP	RPM	BHP	RPM	BHP	RPM	BHP	RPM	BHP	RPM	BHP	RPM	BHP	RPM	BHP	RPM	BHP	RPM	BHP
3500	822	225	0.17	287	0.26	343	0.35	395	0.47	436	0.58										
4000	940	257	0.26	310	0.35	363	0.46	411	0.58	455	0.71										
4500	1057	289	0.37	334	0.46	386	0.60	428	0.71	471	0.85	542	1.14								
5000	1175	321	0.50	360	0.60	408	0.75	450	0.89	487	1.02	561	1.36	619	1.66						
5500	1292	354	0.67	387	0.76	431	0.92	472	1.09	507	1.23	576	1.56	638	1.94	689	2.26				
6000	1410	386	0.87	416	0.97	454	1.12	494	1.31	529	1.48	592	1.80	655	2.21	708	2.60	754	2.96		
6500	1527	418	1.11	446	1.21	479	1.36	517	1.57	552	1.77	611	2.09	670	2.50	726	2.96	772	3.35	815	3.74
7000	1645	450	1.38	476	1.50	505	1.64	540	1.85	574	2.07	633	2.45	686	2.82	741	3.29	791	3.78	834	4.21
7500	1763	482	1.70	507	1.83	532	1.96	564	2.17	597	2.41	655	2.85	706	3.23	756	3.66	807	4.19	852	4.70
8000	1880	514	2.06	537	2.19	561	2.34	588	2.53	619	2.77	678	3.28	727	3.69	774	4.11	822	4.62	868	5.18
8500	1998	546	2.47	568	2.61	590	2.77	615	2.96	643	3.19	700	3.74	749	4.21	794	4.64	838	5.11	883	5.67
9000	2115	579	2.94	599	3.08	620	3.25	642	3.43	668	3.67	722	4.22	772	4.77	815	5.22	857	5.69	899	6.22
9500	2233	611	3.46	630	3.61	649	3.77	670	3.96	693	4.18	745	4.76	794	5.36	837	5.87	877	6.34	917	6.86
10000	2350	643	4.03	661	4.19	680	4.37	699	4.56	720	4.78	768	5.34	817	6.00	860	6.57	899	7.08	937	7.59
10500	2468	675	4.67	693	4.84	710	5.01	727	5.19	747	5.42	792	5.99	839	6.66	882	7.30				
11000	2585	707	5.36	725	5.56	740	5.72	757	5.91	775	6.13	816	6.68	862	7.39						
11500	2703	739	6.12	757	6.34	771	6.50	787	6.70	804	6.92	842	7.47								
12000	2820	771	6.95	788	7.18	803	7.38	817	7.56												

Performance certified is for Installation Type B: free inlet, ducted outlet. Power rating (BHP) does not include transmission losses. Performance ratings include the effects of air filters.

94 KSPD

SP	Sound Power re 10 ⁻¹² Watts Octave Bands								L _{woA}
	1	2	3	4	5	6	7	8	
0.000	53	48	48	44	34	28	28	31	45
0.125	53	47	46	41	32	27	27	32	43
0.250	58	48	45	40	33	29	28	33	43

95 KSPD

SP	Sound Power re 10 ⁻¹² Watts Octave Bands								L _{woA}
	1	2	3	4	5	6	7	8	
0.000	58	52	52	50	40	32	31	34	50
0.125	57	50	50	48	38	31	30	34	48
0.250	59	49	47	44	35	30	29	34	45

96 KSPD

SP	Sound Power re 10 ⁻¹² Watts Octave Bands								L _{woA}
	1	2	3	4	5	6	7	8	
0.000	64	62	58	53	46	40	37	38	55
0.125	64	63	57	52	46	40	37	37	54
0.250	65	65	56	52	45	40	36	36	56
0.375	65	68	55	53	45	40	36	36	56

97 KSPD

SP	Sound Power re 10 ⁻¹² Watts Octave Bands								L _{woA}
	1	2	3	4	5	6	7	8	
0.000	68	66	62	59	51	44	41	41	60
0.125	67	66	60	57	50	43	40	40	58
0.250	66	68	59	56	48	42	38	38	58
0.375	66	68	57	54	46	41	36	37	57

98 KSPD

SP	Sound Power re 10 ⁻¹² Watts Octave Bands								L _{woA}
	1	2	3	4	5	6	7	8	
0.000	67	67	65	58	50	45	45	44	60
0.125	67	65	60	53	46	42	42	41	56
0.250	62	62	57	51	44	41	40	38	54
0.375	61	60	55	50	43	39	39	36	52

99 KSPD

SP	Sound Power re 10 ⁻¹² Watts Octave Bands								L _{woA}
	1	2	3	4	5	6	7	8	
0.000	68	69	66	60	51	46	46	45	62
0.125	69	69	65	59	51	46	46	45	61
0.250	70	70	64	59	50	45	46	44	61
0.375	67	68	63	58	49	45	45	43	60
0.500	64	66	62	57	49	44	44	42	59
0.625	65	66	60	56	48	43	43	41	58
0.750	66	65	59	54	47	42	42	39	56

103 KSPD

SP	Sound Power re 10 ⁻¹² Watts Octave Bands								L _{woA}
	1	2	3	4	5	6	7	8	
0.000	61	60	56	50	44	44	44	45	54
0.125	60	59	55	49	43	42	42	42	53
0.250	60	59	56	50	43	41	42	41	53
0.375	61	59	56	51	45	41	41	41	53
0.500	63	60	58	53	47	42	42	41	55

The sound power level ratings shown are in decibels referred to 10⁻¹² watts calculated per AMCA Standard 301. The A-weighted sound ratings shown have been calculated per AMCA Standard 301. Values shown are for outlet L_{wo} and L_{woA} sound power levels for Installation Type B: free inlet, ducted outlet. Ratings include the effects of duct end correction for the outlet duct. The AMCA Certified Ratings Seal applies to air performance ratings only for Model KSPD.

104 KSPD

SP	Sound Power re 10 ⁻¹² Watts Octave Bands								L _{woA}
	1	2	3	4	5	6	7	8	
0.000	64	62	59	54	47	46	47	47	57
0.125	64	62	59	53	47	45	45	45	56
0.250	63	62	59	53	47	44	45	45	56
0.375	63	61	59	53	47	43	44	43	56
0.500	63	61	59	54	47	42	43	42	56

105 KSPD

SP	Sound Power re 10 ⁻¹² Watts Octave Bands								L _{woA}
	1	2	3	4	5	6	7	8	
0.000	70	68	66	61	55	51	52	52	64
0.125	70	68	66	61	55	50	51	51	63
0.250	69	68	66	61	55	50	51	51	63
0.375	69	68	67	61	55	49	50	50	63
0.500	69	67	66	61	55	48	50	49	63
0.625	69	66	65	60	54	47	48	48	62
0.750	69	66	65	60	54	47	48	47	62
0.875	68	65	64	59	53	46	47	45	61

106 KSPD

SP	Sound Power re 10 ⁻¹² Watts Octave Bands								L _{woA}
	1	2	3	4	5	6	7	8	
0.000	74	72	71	67	60	54	56	56	68
0.125	73	72	70	66	59	53	55	55	67
0.250	72	71	70	65	59	52	54	54	67
0.375	71	70	69	64	58	51	53	53	66
0.500	70	69	68	63	57	50	51	51	65
0.625	69	67	66	61	55	48	49	49	63
0.750	69	66	65	59	54	46	47	46	61
0.875	68	64	63	58	52	44	45	44	60

122 KSPD

SP	Sound Power re 10 ⁻¹² Watts Octave Bands								L _{woA}
	1	2	3	4	5	6	7	8	
0.000	65	67	65	56	53	47	46	44	61
0.125	63	67	65	58	54	48	46	44	61
0.250	64	68	67	60	56	48	47	44	63
0.375	64	69	68	62	58	49	47	44	65
0.500	66	71	70	65	60	51	48	45	67
0.625	67	73	72	67	61	52	49	45	69

123 KSPD

SP	Sound Power re 10 ⁻¹² Watts Octave Bands								L _{woA}
	1	2	3	4	5	6	7	8	
0.000	67	70	69	63	58	51	50	47	65
0.125	66	71	69	64	59	51	50	48	66
0.250	65	70	69	65	60	51	50	47	66
0.375	65	71	70	66	61	52	50	47	67
0.500	66	72	71	67	61	52	50	47	68
0.625	67	73	73	68	62	53	50	46	69

124 KSPD

SP	Sound Power re 10 ⁻¹² Watts Octave Bands								L _{woA}
	1	2	3	4	5	6	7	8	
0.000	70	74	73	70	64	55	54	52	71
0.125	68	73	72	69	63	54	53	51	70
0.250	66	73	71	69	63	53	52	50	69
0.375	66	72	71	68	62	53	51	48	69
0.500	66	72	71	67	62	52	50	47	68
0.625	67	73	72	68	62	52	49	46	69

125 KSPD

SP	Sound Power re 10 ⁻¹² Watts Octave Bands								L _{wo} A
	1	2	3	4	5	6	7	8	
0.000	73	70	67	62	59	56	55	53	66
0.125	72	69	67	62	59	55	55	52	65
0.250	71	70	68	63	59	55	55	52	66
0.375	71	71	69	64	60	55	55	51	67
0.500	72	72	70	66	60	55	55	51	67
0.625	72	73	71	67	61	55	54	51	68

126 KSPD

SP	Sound Power re 10 ⁻¹² Watts Octave Bands								L _{wo} A
	1	2	3	4	5	6	7	8	
0.000	76	73	71	66	62	58	58	56	69
0.125	75	72	70	66	62	58	58	55	69
0.250	74	72	70	66	62	57	57	54	68
0.375	73	72	70	67	62	56	56	53	68
0.500	72	73	71	67	62	56	56	52	69
0.625	72	73	71	67	62	56	55	52	69

127 KSPD

SP	Sound Power re 10 ⁻¹² Watts Octave Bands								L _{wo} A
	1	2	3	4	5	6	7	8	
0.000	78	74	72	69	64	60	60	58	71
0.125	76	74	71	68	64	59	59	56	70
0.250	74	73	71	68	63	58	58	55	70
0.375	73	72	70	67	62	57	57	54	69
0.500	72	73	71	67	62	56	56	53	69
0.625	72	73	71	67	61	55	55	51	68

The sound power level ratings shown are in decibels referred to 10⁻¹² watts calculated per AMCA Standard 301. The A-weighted sound ratings shown have been calculated per AMCA Standard 301. Values shown are for outlet L_{wo} and L_{wo}A sound power levels for Installation Type B: free inlet, ducted outlet. Ratings include the effects of duct end correction for the outlet duct. The AMCA Certified Ratings Seal applies to air performance ratings only for Model KSPD.

90 KSPB

RPM	SP	Sound Power re 10 ⁻¹² Watts Octave Bands								L _{wo} A
		1	2	3	4	5	6	7	8	
250	0.00	48	46	45	42	40	36	32	28	45
350	0.00	61	55	53	50	48	45	41	37	53
450	0.00	71	61	59	57	54	52	48	44	60
550	0.00	78	67	63	62	59	58	54	50	65
650	0.00	83	73	68	66	63	61	58	54	70
	0.25	78	68	62	59	56	53	48	43	63
750	0.00	87	79	71	69	67	65	62	58	73
	0.25	83	75	67	64	61	59	55	50	68
850	0.00	91	84	74	72	70	68	66	62	77
	0.25	88	81	71	69	66	63	60	55	73
950	0.00	94	88	77	75	73	70	69	65	80
	0.25	92	86	74	72	70	67	65	60	77
1050	0.00	96	92	80	77	76	73	72	67	83
	0.25	95	90	78	75	73	70	68	64	80
1150	0.50	93	88	76	73	70	67	65	60	78
	0.00	98	95	83	80	78	75	74	70	85
1250	0.25	97	93	81	78	76	73	71	67	83
	0.50	95	91	80	76	73	70	68	64	81
1350	0.00	99	97	87	82	80	77	76	72	87
	0.25	98	95	85	80	78	76	74	70	86
1450	0.50	97	94	84	79	76	73	71	67	84
	1.00	100	98	88	82	80	78	76	72	88
1650	0.50	99	97	87	81	79	76	74	70	87
	1.00	99	97	88	81	78	75	73	69	87
1650	1.50	101	101	93	84	81	78	75	71	90

100 KSPB

RPM	SP	Sound Power re 10 ⁻¹² Watts Octave Bands								L _{wo} A
		1	2	3	4	5	6	7	8	
450	0.00	75	66	61	60	59	58	53	48	64
550	0.00	80	73	67	63	64	63	59	54	69
650	0.00	84	79	71	67	68	67	64	59	74
	0.25	83	76	66	61	60	59	55	47	67
750	0.00	88	84	75	71	71	70	68	63	77
	0.25	87	82	72	67	66	65	62	56	73
850	0.00	91	89	79	75	74	73	72	67	81
	0.25	90	86	76	72	70	69	68	62	78
950	0.50	89	86	72	67	65	63	61	53	74
	0.00	93	92	83	78	76	75	74	70	84
1050	0.25	92	88	78	74	72	71	70	64	80
	0.50	91	89	75	70	68	66	65	57	77
1150	0.00	95	94	86	81	78	78	77	73	86
	0.25	94	93	85	79	75	75	74	70	84
1250	0.50	94	92	83	77	73	72	71	66	82
	0.00	96	96	90	83	79	80	79	75	88
1350	0.25	96	95	88	82	77	78	77	73	87
	0.50	96	95	87	80	75	76	75	70	85
1450	0.25	97	97	90	83	79	79	78	75	88
	0.50	97	96	89	82	77	77	76	72	87
1650	1.00	95	95	86	77	72	71	70	64	84
	1.00	98	99	92	83	78	77	75	72	89
1450	1.50	99	100	94	82	77	76	74	70	90

The sound power level ratings shown are in decibels referred to 10⁻¹² watts calculated per AMCA Standard 301. The A-weighted sound ratings shown have been calculated per AMCA Standard 301. Values shown are for outlet L_{wo} and L_{wo}A sound power levels for Installation Type B: free inlet, ducted outlet. Ratings include the effects of duct end correction for the outlet duct.

120 KSPB

RPM	SP	Sound Power re 10^{-12} Watts Octave Bands								L _{wo} A
		1	2	3	4	5	6	7	8	
300	0.00	65	61	59	56	54	51	44	38	59
400	0.00	74	67	67	64	61	59	53	47	67
500	0.00	79	75	72	70	67	65	60	54	72
	0.25	76	68	63	60	57	55	49	42	63
600	0.00	82	80	76	74	71	69	66	60	77
	0.25	85	76	71	69	65	63	59	52	72
700	0.00	85	85	79	78	75	73	70	64	81
	0.25	92	82	76	75	72	69	66	59	78
	0.50	88	79	71	69	65	63	60	53	72
800	0.00	88	89	82	82	79	76	74	68	85
	0.25	97	87	80	80	76	73	72	65	83
	0.50	95	85	77	76	72	69	67	60	79
900	0.00	90	92	86	84	82	79	77	72	87
	0.25	97	92	85	83	80	77	75	69	86
	0.50	98	90	82	81	77	74	72	66	84
1000	0.00	92	94	89	87	84	82	80	75	90
	0.25	98	95	88	86	83	80	78	73	89
	0.50	101	95	87	84	81	78	76	71	88
	1.00	96	91	83	78	75	72	70	64	83
1100	0.25	98	97	91	88	86	83	81	76	92
	0.50	103	99	90	87	85	82	79	75	91
	1.00	100	96	87	83	80	77	75	70	87
1200	1.00	102	100	91	86	84	81	78	74	91
	1.50	99	97	88	82	79	76	74	70	87

150 KSPB

RPM	SP	Sound Power re 10^{-12} Watts Octave Bands								L _{wo} A
		1	2	3	4	5	6	7	8	
300	0.00	68	66	62	62	61	58	52	46	65
400	0.00	76	74	70	68	68	66	60	54	72
500	0.00	82	79	76	73	73	71	67	61	78
	0.25	77	73	71	68	67	65	60	53	72
600	0.00	88	83	81	77	77	76	73	67	83
	0.25	84	80	77	75	73	72	69	62	79
700	0.00	92	87	85	81	80	80	77	71	87
	0.25	89	85	82	80	77	77	74	68	84
	0.50	86	82	78	77	74	74	71	64	81
800	0.00	95	91	89	85	83	83	81	75	90
	0.25	92	89	86	84	80	81	79	73	88
	0.50	90	88	84	82	78	79	76	70	86
900	0.00	97	95	91	88	85	86	84	79	92
	0.25	95	93	90	87	83	84	82	77	91
	0.50	93	92	88	86	82	82	80	75	89
1000	1.00	89	88	84	82	78	78	76	70	85
	0.50	96	95	91	89	85	85	84	79	93
	1.00	93	92	88	86	83	82	80	75	89
1100	1.50	93	93	89	87	84	82	81	76	90

The sound power level ratings shown are in decibels referred to 10^{-12} watts calculated per AMCA Standard 301. The A-weighted sound ratings shown have been calculated per AMCA Standard 301. Values shown are for outlet L_{wo} and L_{wo}A sound power levels for free inlet, ducted outlet. Ratings include the effects of duct end correction for the outlet duct.

180 KSPB

RPM	SP	Sound Power re 10^{-12} Watts Octave Bands								L _{wo} A
		1	2	3	4	5	6	7	8	
300	0.00	71	66	63	60	60	56	50	43	64
400	0.00	81	74	70	68	66	64	56	52	71
	0.25	76	69	64	62	61	58	52	47	66
500	0.00	89	81	76	73	71	70	65	59	77
	0.25	86	77	72	70	67	66	61	55	73
	0.50	83	75	68	66	65	63	58	53	70
600	0.00	94	86	81	78	75	75	71	65	82
	0.25	93	84	78	75	73	72	68	62	79
	0.50	90	82	75	73	70	70	65	59	77
700	0.00	97	91	85	82	79	78	75	69	86
	0.25	96	90	83	80	77	76	73	67	84
	0.50	94	88	81	78	75	74	71	65	82
800	0.00	99	96	89	85	82	81	79	73	89
	0.25	99	95	88	84	81	80	77	72	88
	0.50	98	94	86	82	80	78	75	70	87
	1.00	95	91	84	79	77	76	73	67	84
900	0.00	101	100	92	88	85	84	82	77	93
	0.25	101	99	91	87	84	83	81	76	91
	0.50	100	99	90	86	83	81	79	74	90
	1.00	98	96	88	83	81	79	77	72	88
1.50	0.50	97	95	86	81	79	78	75	70	86

200 KSPB

RPM	SP	Sound Power re 10^{-12} Watts Octave Bands								L _{wo} A
		1	2	3	4	5	6	7	8	
200	0.00	64	59	57	55	53	47	41	35	57
300	0.00	77	70	66	65	64	59	53	47	68
400	0.00	86	79	74	72	70	68	62	56	75
	0.25	83	76	70	69	66	63	58	56	72
500	0.00	93	86	79	77	75	75	68	63	81
	0.25	91	84	77	76	73	72	66	61	79
	0.50	89	82	74	74	69	69	62	61	76
600	0.00	96	92	85	82	80	79	74	68	86
	0.25	95	91	83	80	78	77	72	67	84
	0.50	93	89	82	79	76	75	70	66	83
	1.00	91	87	78	78	73	71	66	70	80
700	0.00	98	97	90	85	83	82	79	73	90
	0.25	98	96	89	84	82	81	77	72	89
	0.50	97	95	88	84	81	80	76	71	88
	1.00	95	93	85	81	79	76	72	69	85
800	0.25	100	100	93	88	86	84	82	76	93
	0.50	99	99	92	87	85	83	81	75	92
	1.00	98	98	91	85	84	81	78	73	90
	1.50	97	97	89	83	82	79	76	72	88



LOREN COOK COMPANY

2015 E. DALE STREET
SPRINGFIELD, MO 65803-4637

417.869.6474

FAX 417.862.3820

lorencook.com