



511 SOUTH 7TH STREET  
 DELANO MN 55328  
 Phone: 763.972.2981  
 Fax: 763.972.2911

www.industriallouvers.com  
 ilinfo@industriallouvers.com

## MODEL 456XP

### STANDARD CONSTRUCTION

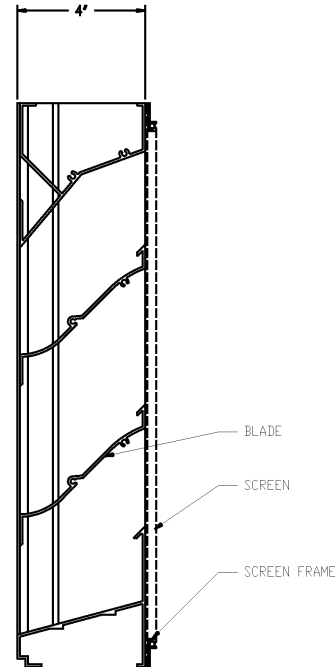
- **Material:** Extruded Aluminum 6063-T6
- **Frame:** 4" (102mm) deep, .081" (2.1mm) nominal wall thickness
- **Blades:** 4" (102mm) deep, .081" (2.1mm) nominal wall thickness
- **Blade Spacing:** 4.25" (108mm) on center
- **Screen:** 1/2" x .063" flattened expanded bird screen and/or 18 x 14 mesh charcoal insect screen.
- **Finish:** Mill

### OPTIONAL ACCESSORIES

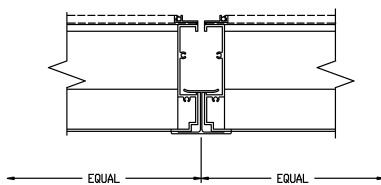
- Extended Sill Flashing
- Insulated and Non-insulated Blank-off Panels
- Flanged & Glazing Frames of various sizes
- Hinged Access Panels
- Sub-frames
- Visible Mullions
- Invisible Mullions for continuous blade appearance

### FINISHES

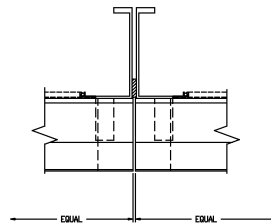
- **2 Coat Fluoropolymer:** Kynar 500 / Hylar 5000 custom colors available in 70% PVDF (AAMA 2605) or 50% PVDF (AAMA 2604) formulas.
- **3 Coat Fluoropolymer:** Kynar 500 / Hylar 5000 custom colors available in 70% PVDF (AAMA 2605) formulas.
- **Anodic Finishes:** Class I and Class II in Clear, Light/Medium/Dark Bronze, Champagne, and Black.
- **Prime Coat**
- **Mill**



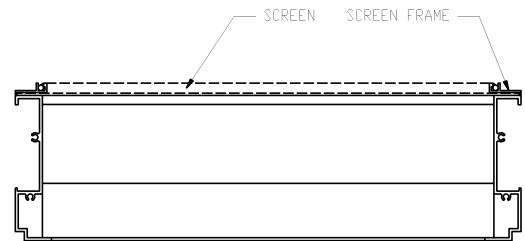
Vertical Section



Visible Vertical Mullion



Invisible Vertical Mullion



Plan View

Qty	Size: Actual <input type="checkbox"/> M.O. <input type="checkbox"/>		MULLION TYPE	NO. OF SECTIONS	NOTES
	WIDTH	HEIGHT			
<input type="checkbox"/>	SILL FLASHING:				PROJECT:
<input type="checkbox"/>	SCREEN:				LOCATION:
<input type="checkbox"/>	FINISH:				ARCHITECT:
<input type="checkbox"/>	COLOR:				REPRESENTATIVE:
<input type="checkbox"/>	OTHER:				DATE:                      JOB #:

# MODEL 456XP

## SUGGESTED SPECIFICATIONS

**General:** Furnish and install where indicated on drawings 4" (102mm) Extra Performance Weather Resistant Louver Model 456XP as manufactured by Industrial Louvers, Inc., Delano, MN.

**Material:** Extruded aluminum frames and blades shall be one piece 6063-T6 alloy, designed to collect and drain water to the exterior at the sill by means of integral gutters in the blades and jamb frames. Frame shall have a material thickness of .081" (2.1mm). Fixed blades shall have a material thickness of .081" (2.1mm). Frames and blades shall be joined by stainless steel mechanical fastener, and frame will be caulked to prevent water penetration to interior wall construction.

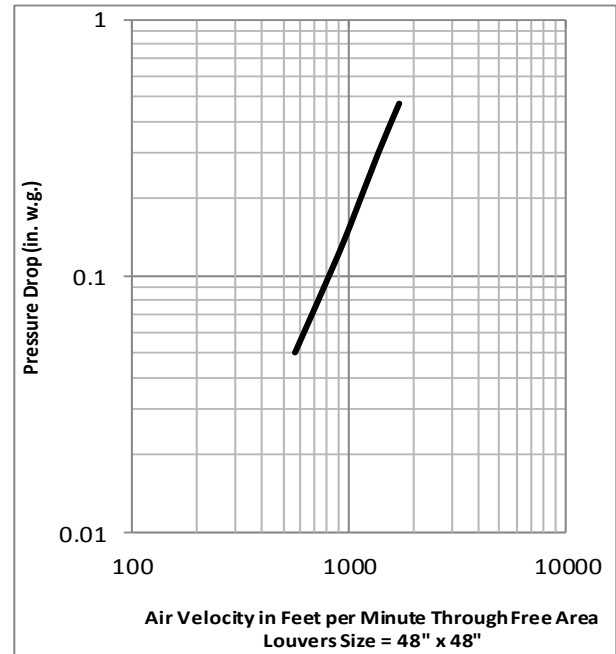
### Performance

- Free area (4' x 4' louver) = 8.45 sq. ft. (52.8%)
- Free area velocity at point of beginning water penetration (.01 oz/sq. ft.) = 903.7 fpm
- Pressure drop @ 976.4 FPM velocity = .15" water
- Air volume @ 976.4 FPM free area velocity = 8,445.86 CFM

## Free Area

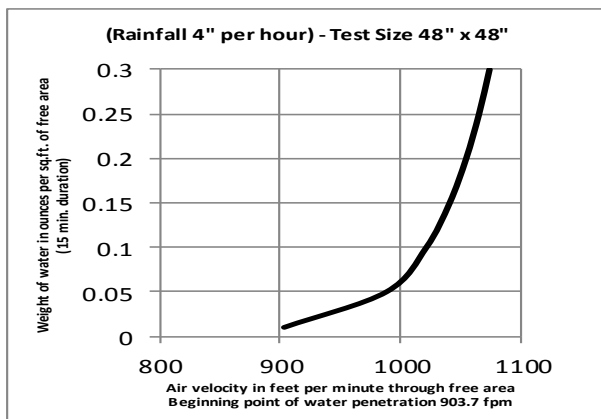
Square Feet (Square Meters)							
Free Area AMCA Licensed for openings up to 72" x 120"							
For free area data for larger openings, contact factory.							
3048.0	0.46	1.00	1.54	2.08	2.62	3.16	
<b>120</b>	<b>4.91</b>	<b>10.73</b>	<b>16.55</b>	<b>22.36</b>	<b>28.18</b>	<b>34.00</b>	
2743.2	0.41	0.89	1.37	1.85	2.33	2.81	
<b>108</b>	<b>4.37</b>	<b>9.55</b>	<b>14.73</b>	<b>19.91</b>	<b>25.09</b>	<b>30.27</b>	
2438.4	0.36	0.78	1.20	1.62	2.04	2.47	
<b>96</b>	<b>3.83</b>	<b>8.37</b>	<b>12.91</b>	<b>17.45</b>	<b>21.99</b>	<b>26.53</b>	
2133.6	0.31	0.67	1.03	1.39	1.76	2.12	
<b>84</b>	<b>3.29</b>	<b>7.19</b>	<b>11.10</b>	<b>15.00</b>	<b>18.90</b>	<b>22.80</b>	
1828.8	0.26	0.56	0.86	1.17	1.47	1.77	
<b>72</b>	<b>2.75</b>	<b>6.02</b>	<b>9.28</b>	<b>12.54</b>	<b>15.80</b>	<b>19.07</b>	
1524	0.21	0.45	0.69	0.94	1.18	1.42	
<b>60</b>	<b>2.21</b>	<b>4.84</b>	<b>7.46</b>	<b>10.09</b>	<b>12.71</b>	<b>15.33</b>	
1219.2	0.17	0.38	0.58	0.78	0.99	1.19	
<b>48</b>	<b>1.85</b>	<b>4.05</b>	<b>6.25</b>	<b>8.45</b>	<b>10.65</b>	<b>12.84</b>	
914.4	0.12	0.27	0.41	0.56	0.70	0.85	
<b>36</b>	<b>1.32</b>	<b>2.87</b>	<b>4.43</b>	<b>5.99</b>	<b>7.55</b>	<b>9.11</b>	
609.6	0.07	0.16	0.24	0.33	0.41	0.50	
<b>24</b>	<b>0.78</b>	<b>1.70</b>	<b>2.62</b>	<b>3.54</b>	<b>4.46</b>	<b>5.38</b>	
<b>304.8</b>	<b>0.02</b>	<b>0.05</b>	<b>0.07</b>	<b>0.10</b>	<b>0.13</b>	<b>0.15</b>	
<b>12</b>	<b>0.24</b>	<b>0.52</b>	<b>0.80</b>	<b>1.08</b>	<b>1.36</b>	<b>1.64</b>	
H/W	304.8	609.6	914.4	1219	1524	1829	
	<b>12</b>	<b>24</b>	<b>36</b>	<b>48</b>	<b>60</b>	<b>72</b>	

## Air Performance Chart



The AMCA Certified Ratings Seal applies to Air Capacities in the intake model only.

## Water Penetration Chart



Industrial Louvers, Inc. certifies that Model 456XP shown hereon is licensed to bear the AMCA Seal. The ratings shown are based on tests and procedures performed in accordance with AMCA Publication 511 and comply with the requirements of the AMCA Certified Ratings Program. The AMCA Certified Ratings Seal applies to air performance ratings and water penetration ratings.